



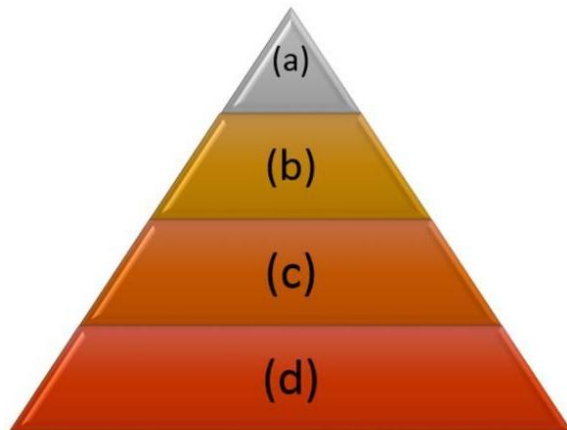
بجانب



COMPUTER SKILLS

بجانب

1-in the Dato Hierarchy Pyramid Lotter (a) represents:



a-Wisdom

b-Knowledge

c-Data

d-Information

2-valuate the following Expression $3^2 + (2^{(2+1)^2}) \text{ Mod } 5 + 3/3$:Then the Result is:

a-19

b-14

c-16

d-9

3-The If Statement that checks whether a given number (X) is Negative or Positive is:

a-If $x < 0$ then print "Positive" else print "Negative"

b-If $x < 0$ then print "Positive" else print "Negative"

c-If $x = 0$ then print "Negative" else print "Positive"

d-If $x < 0$ then print "Negative" else print "Positive"

4-Integration with Current Protocols and Systems is considered a goal of HIT ?

a-true

b-false

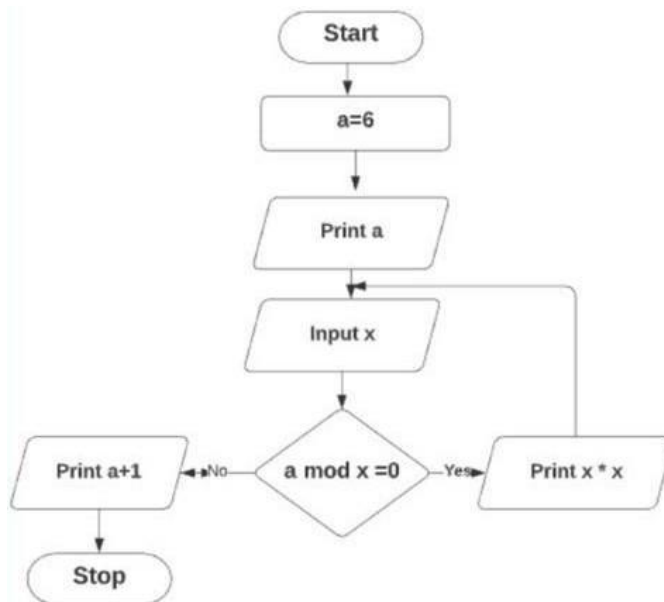
5-Reduce Duplication of Tests is considered a goal of HIT.

a-true

b-false

a-true

6-The output of the following flowchart, given the Inputs (6,3,12) is:



a- 6 36 9 144

b- 6 36 9 13

c- 6 36 9 7

d- 6 36 7

7- The If Statement that checks whether a given number (x) is positive or Negative is:

a-If $x \geq 0$ then print "Positive" else print "Negative"

b-if $x \geq 0$ then print "Negative" else print "Positive"

c-If $x < 0$ then print "Positive" else print "Negative"

d- If $x < > 0$ then print "Positive" else print "Negative"

8- Evaluate the following Expression: $3^2 + (2^2 + 1)^2 \text{ Mod } 5 + 3/3$?

a- 19

b-14

c-16

d-9

9- to Increment y by 10 we write:

a- $Y+10$

b- $Y=y-10$

c- $Y=y+10$

d- $Y-10$

Excel 1 ←
Excel 2 ← طلفات Excel
← موقع دفتريج نوبت لانا

-Open Exam1.xlsx, go to IT Store sheet, the median of Price for Inkjet Printer Product is:

a-1300

b-72.5

c-197

d-190

- Open Exam1.xlsx, go to IT Store sheet, the median of Price for Laptop Product is:

a-197

b-800

c-1300

d-190

- Open Exam1.xlsx, go to graph sheet, In the Monthly Temperature Chart, the Minor Unit in the Y axis is :

a-90

b-10

c-2

d-0

- Open Exam1.xlsx, go to IT Store sheet, the median of Price for Laser Printer Product is:

a-1300

b-197

c-190

d-72.5

- Open Exam.xlsx, go to Scores sheet, the mean of the Statistics column is :

a-65.46154

b-62.41026

c-56.97436

d-62.6410

- Open Exam1xlsx, go to Test sheet The PPV for Test2 is:

a-0.920353982

b-0.654320988

c-0.850574713

d-0.74789916

- Open Exam.xlsx, go to Scores sheet, the mean of the Biology column is:

A-56.97436

b-62.64103

c-62.41026

d-65.46154

- Open Exam1.xlsx, go to IT Store sheet, the median of Price for Desktop Product is:

A-800

b-190

c-1300

d-197

- Open Exam1.xlsx. go to Trainer sheet, the column that has the Lowest Dispersion is:

a-punctuality

b-mastery

c-responsiveness

d-preparation

- Open Exam1.xlsx, go to Students sheet, The Covariance value between Household Income and the Final Grade is :

a) -0.768005793

b)81936.76222

c)0.768005793

d)-81936.76222

- Open Exam 1.xlsx, go to Test sheet, The Specificity for Test1 is :

a)0.888888889

b)0.401709402

c)0.301204819

d)0.891566265

- Open Exam1.xlsx, go to IT Store sheet, Filter the Table to Display the Records with ProductName is Desktop or Price is greater than 600,then the number of obtained records is :

a-42

b-44

c-17

d-22

- Open Exam 1.xlsx, go to Test sheet, The Number of patients who are Diagnosed as Healthy by Test3 is :

a-119

b-89

c-30

d-117

- Open Exam1.xlsx, go to Trainer sheet, the column that has the Highest Dispersion is:

a-Mastery

b-Preparation

c-Responsiveness

d-Punctuality