

**The University Of Jordan  
Faculty Of Medicine  
Anatomy Department**



# **Axilla**

**By**

**Dr. Ahmed Salman**

**Associate Professor of Anatomy**

The axilla, lies between the upper humerus and thorax.

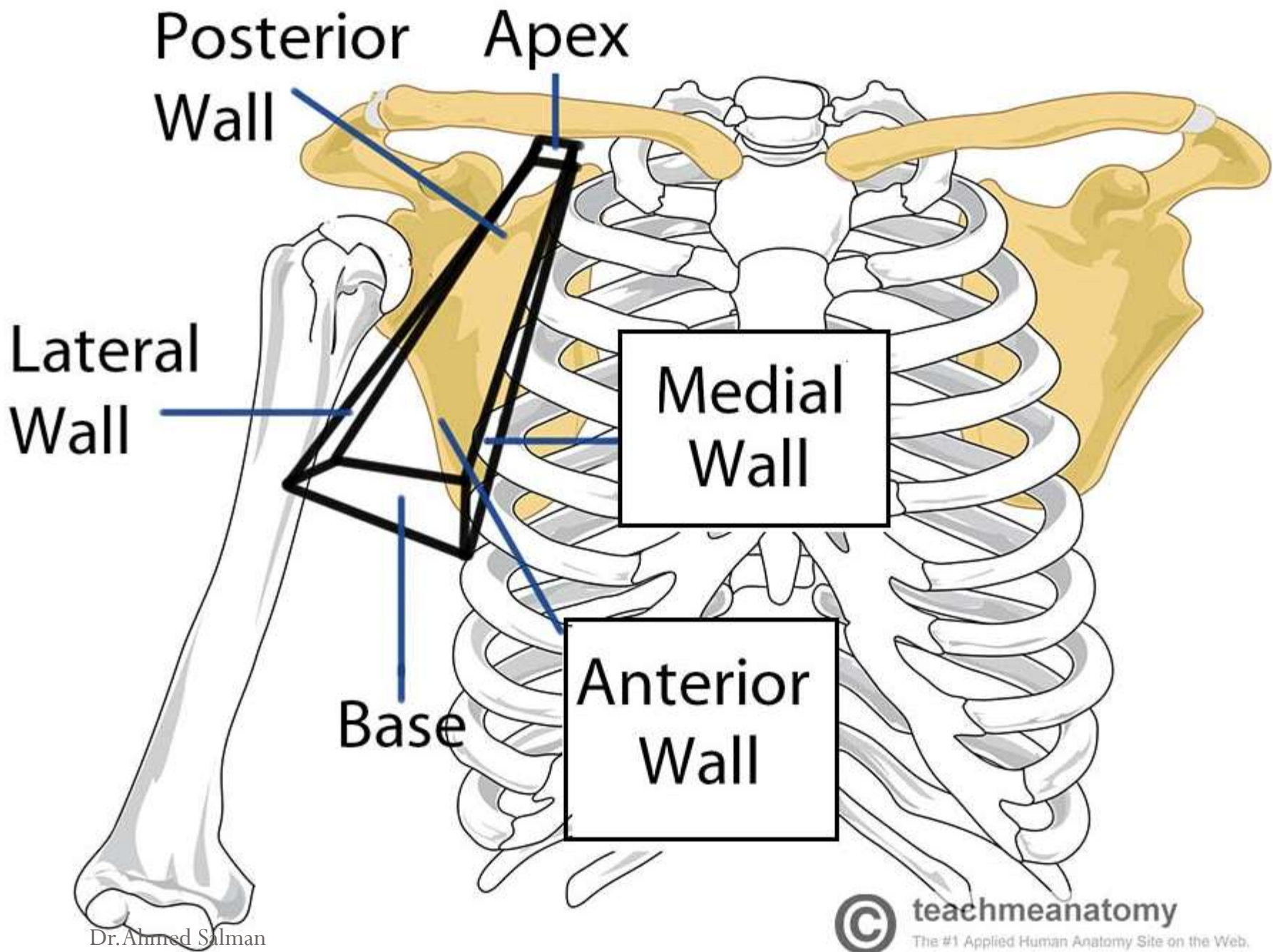
It has a floor, an apex, and four walls (medial, lateral, anterior and posterior)

## **Boundaries**

**The apex :** is pointing toward the root of the neck.

It is continuous with posterior triangle of the neck through (cervico -axillary canal)

**The base :** is formed by the skin and fascia



# Axillary Walls

**Anteriorly** : pectoralis major , pectoralis minor , subclavius and clavicopectoral fascia

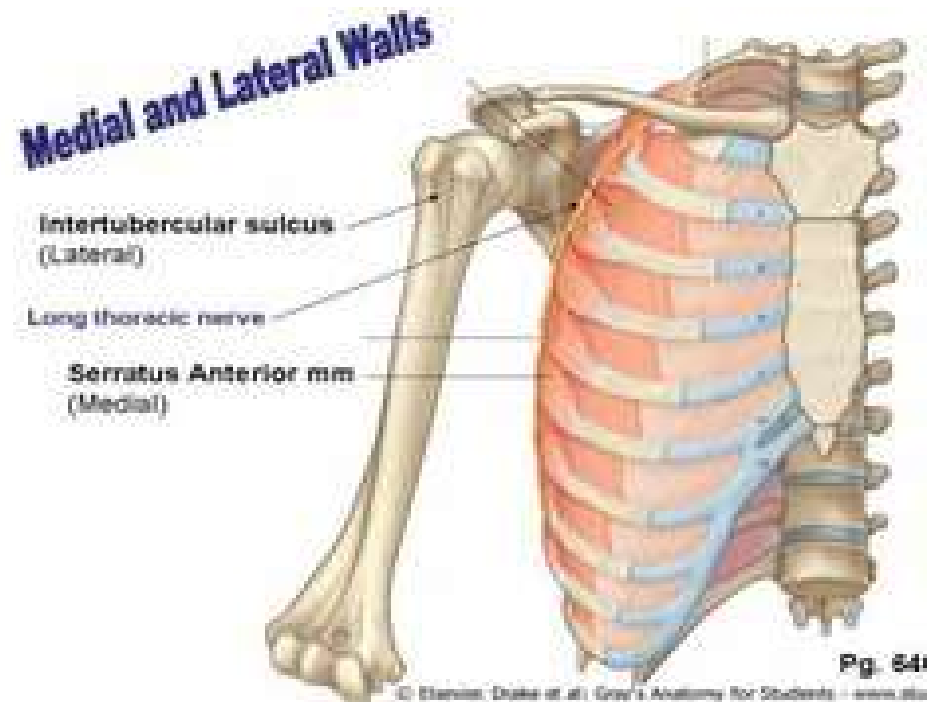
**Posteriorly** : subscapularis , teres major and latissimus dorsi

**Medially** : Serratus anterior , Ribs

**Laterally** : Humerus , biceps and coracobrachialis muscle.

**The anterior axillary fold** : pectoralis major .

**The posterior axillary fold** : latissimus dorsi and teres major muscles

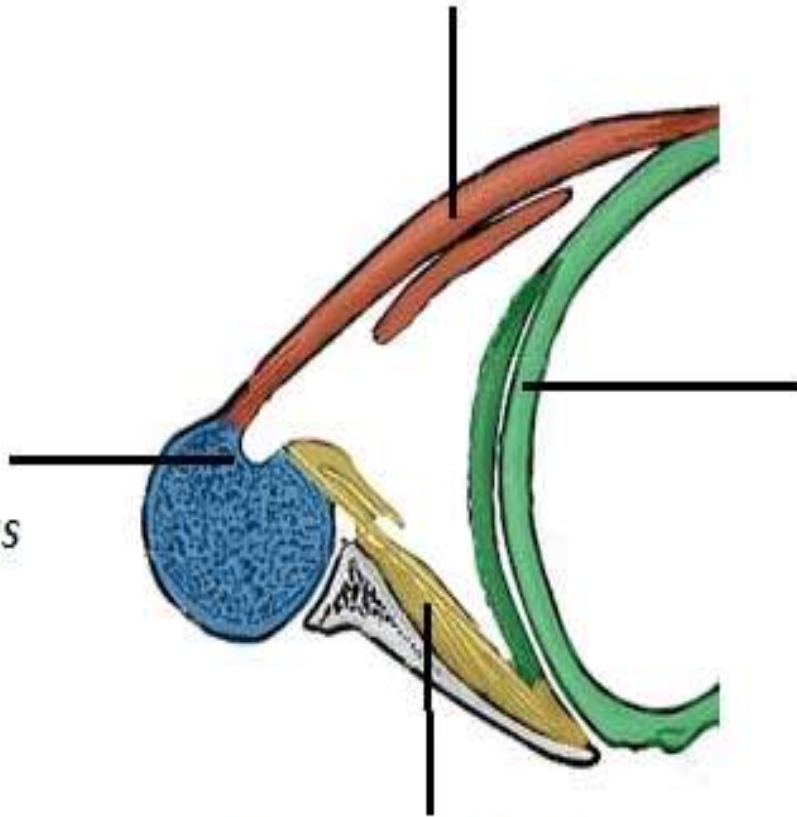


## Anterior Border

*Pectoralis major and minor*

## Lateral Border

*Intertubercular sulcus*



## Medial Border

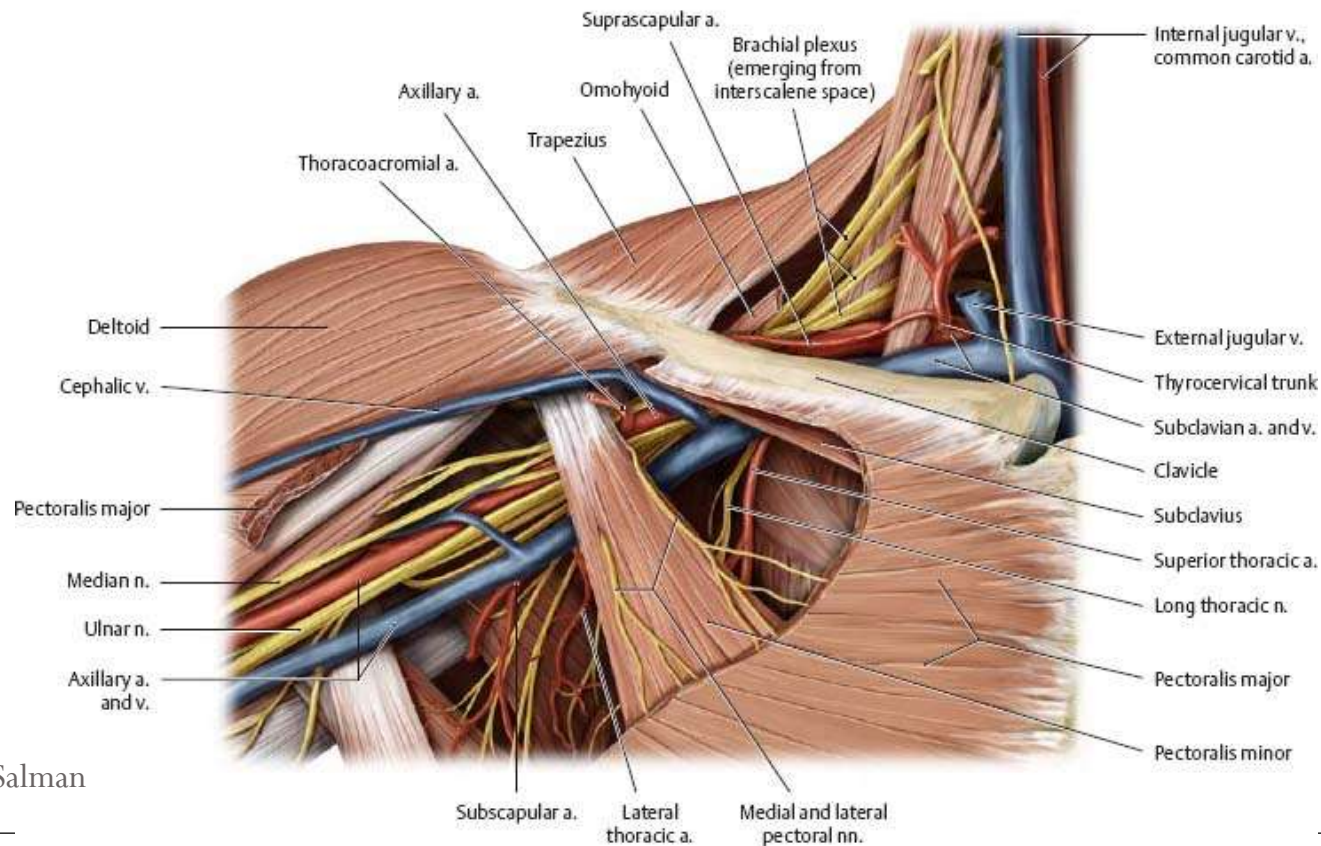
*Serratus anterior and thoracic wall*

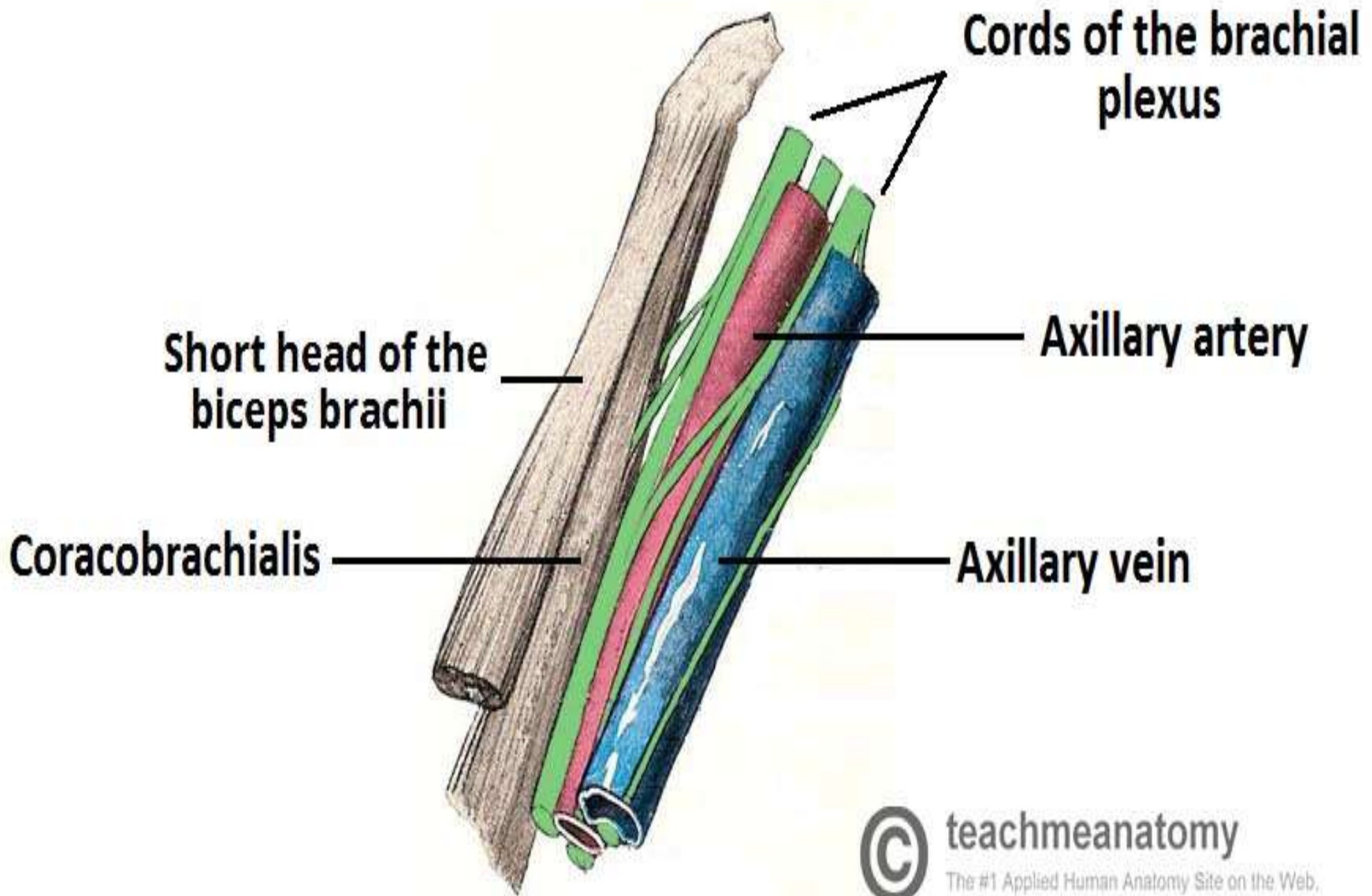
## Posterior Border

*Scapularis, teres major, latissimus dorsi*

# Contents Of the Axilla

- 1- Axillary Artery
- 2- Axillary vein
- 3- Brachial plexuses
- 4- Axillary tail of the breast
- 5- Axillary lymph node



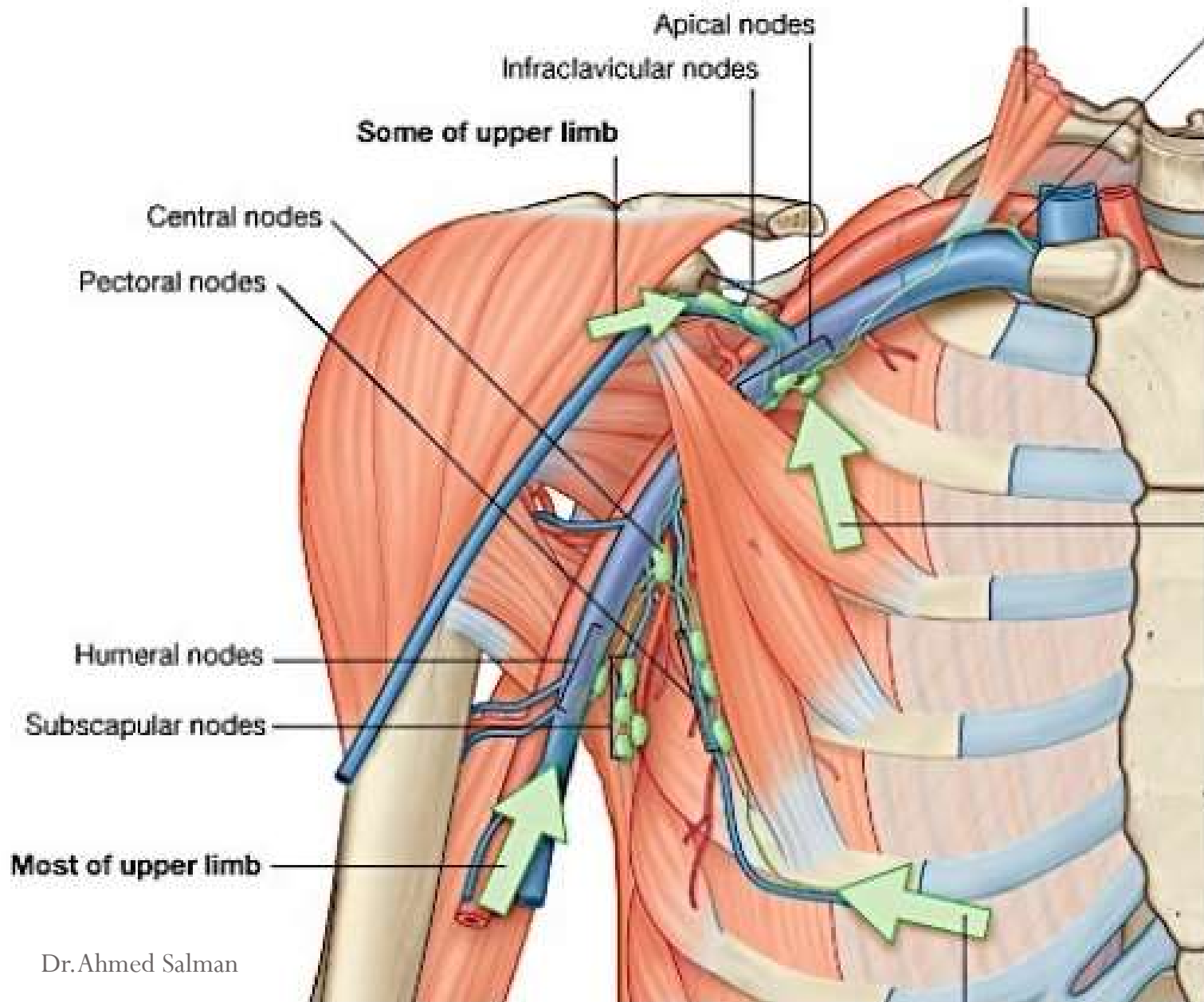


**teachmeanatomy**

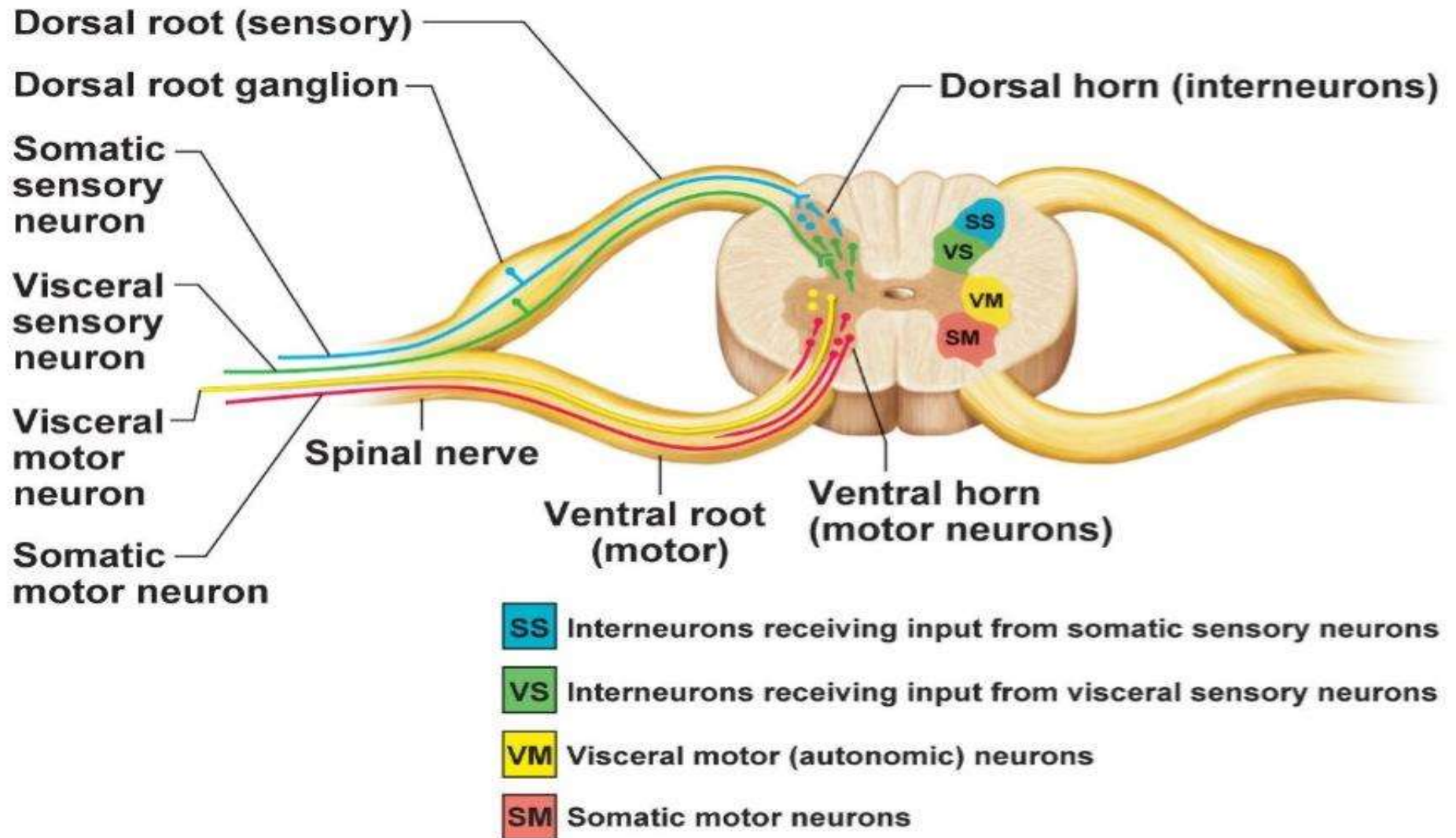
The #1 Applied Human Anatomy Site on the Web.

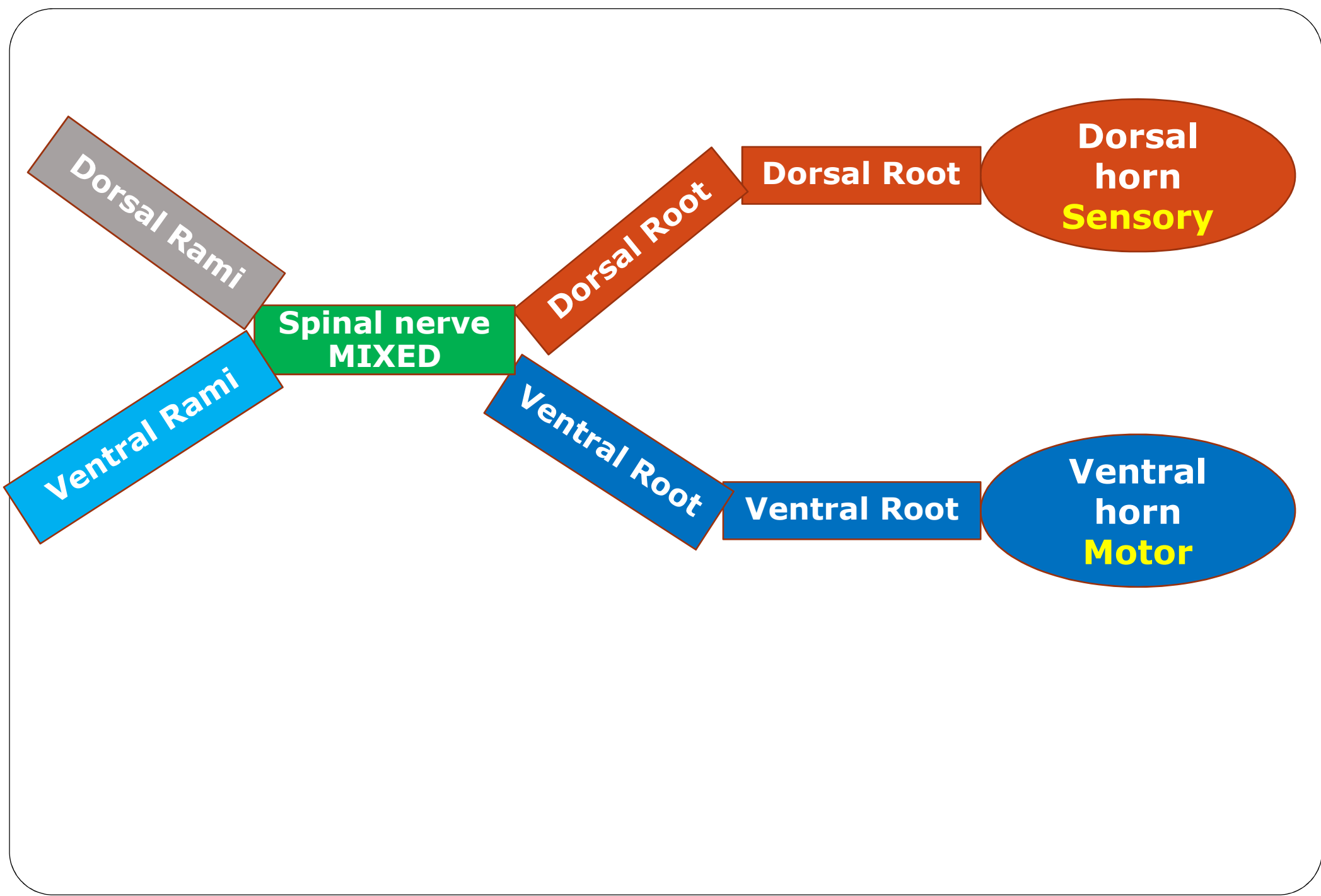


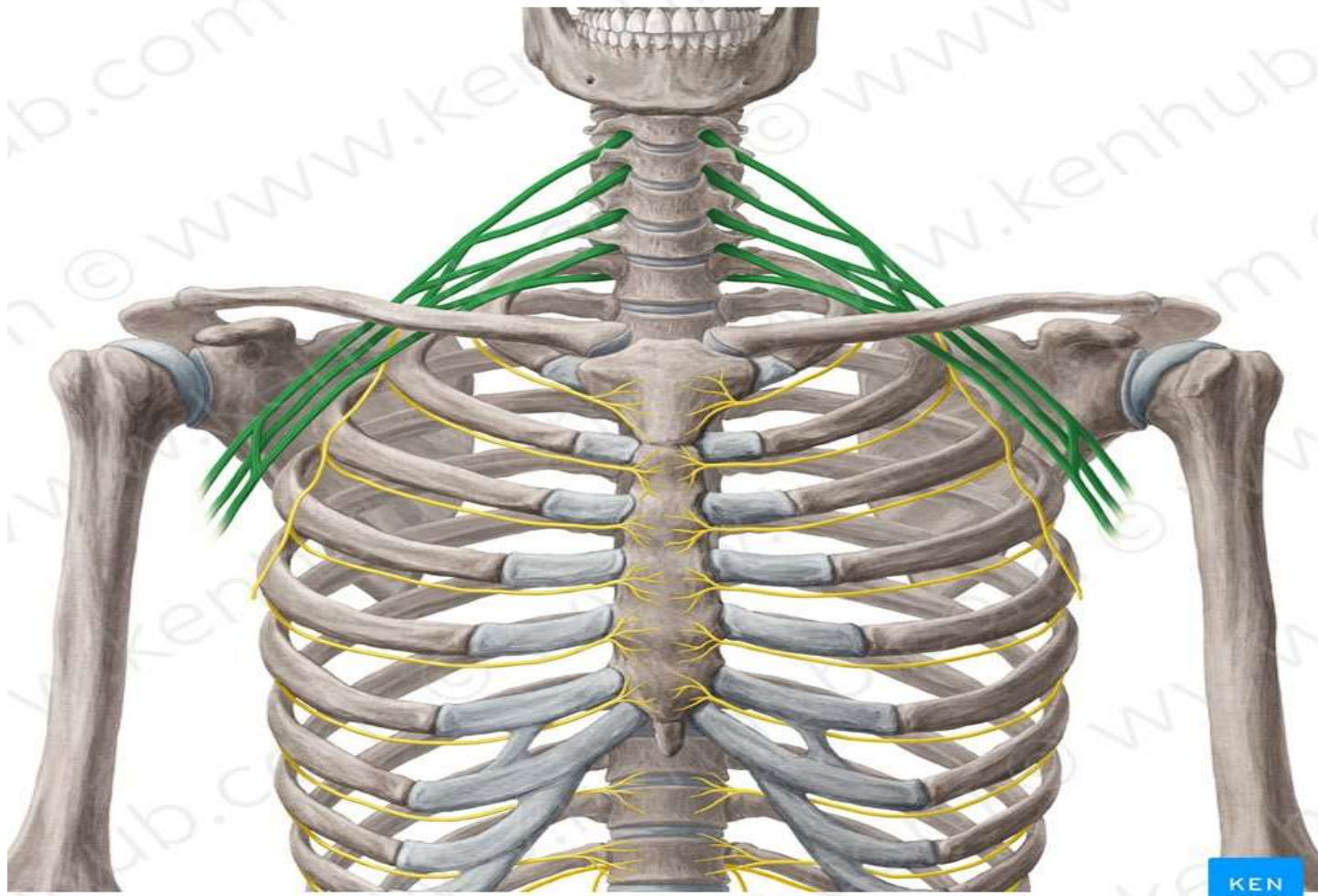
# Axillary vein



# Brachial Plexus







© www.kenhub.com



Dr. Ahmed Salman

# Formation of the Brachial Plexus

---

It is formed from ventral rami of C5,6,7,8 and T1 nerves.

It has four stages

Roots

Trunk

Divisions

Cords

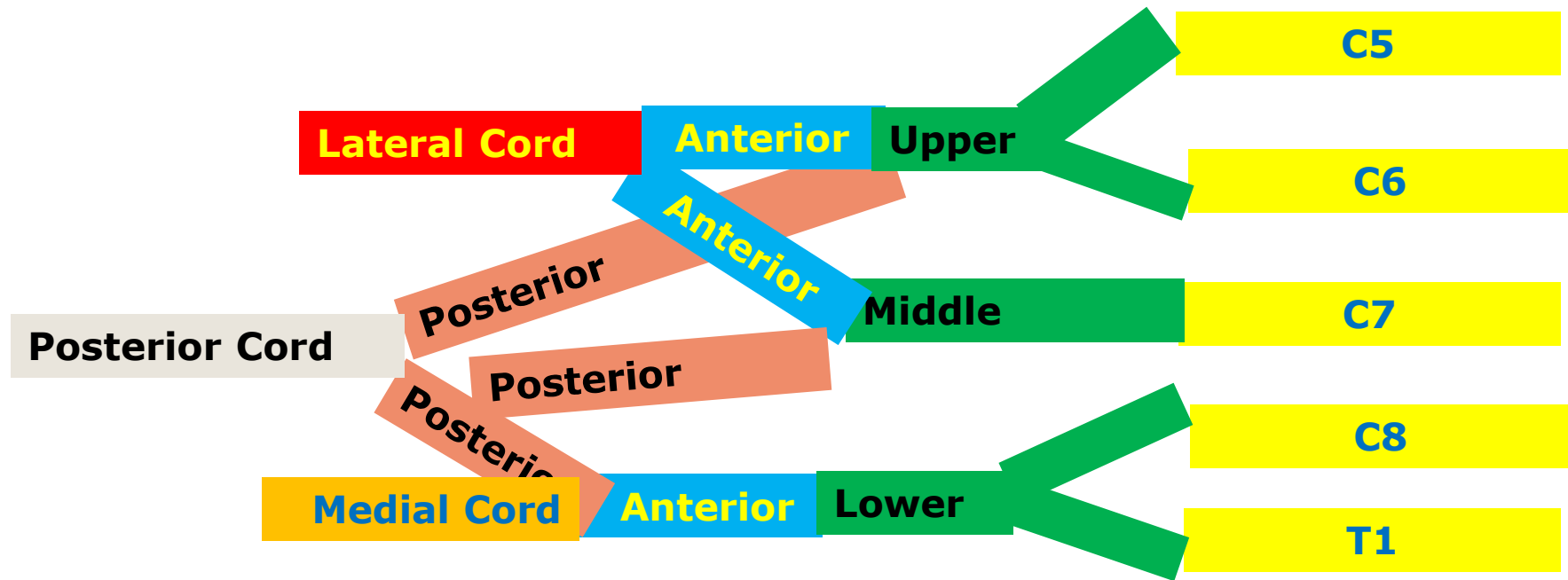
**Branches**

**Cords**

**Division**

**Trunk**

**Roots**



# Branches of the Brachial Plexus

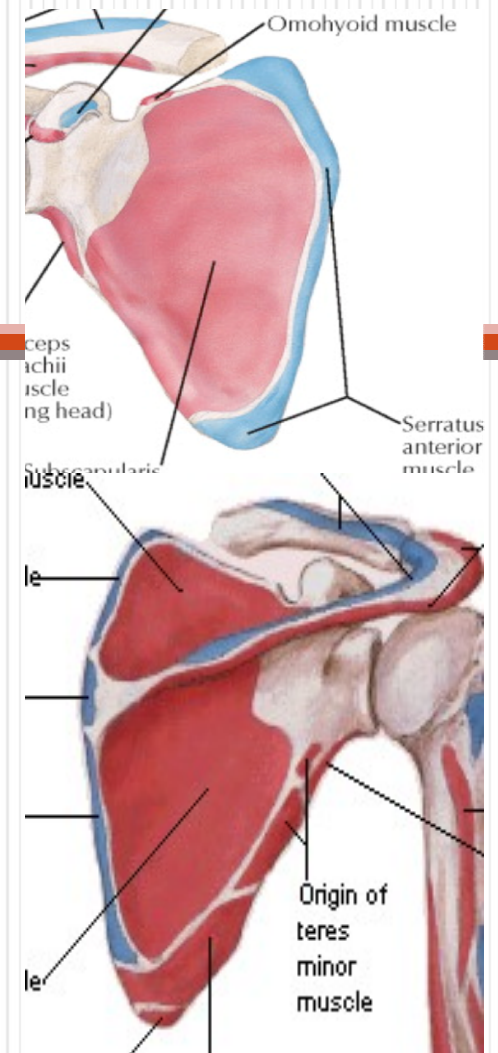
---



## A- Branches from the Roots of the Brachial Plexus

- Dorsal scapular nerve (C5).
- Long thoracic nerve (C5,6,7).

*Medial Border of scapula*



## **B- Branches from the upper Trunk of the Brachial Plexus**

---

- Suprascapular nerve (C5,6).
- Nerve to subclavius (C5,6)

**Upper**

# **C- Branches from the Cords of the Brachial Plexus**

---

## Lateral cord

1-Lateral Pectoral nerve  
(C5,C6 & C7)

2-Lateral root of Median nerve  
(C5,C6 & C7)

3- Muscul*cutaneous* nerve  
(C5,C6 & C7)

## Medial cord

(C8 & T1)

2  
(C8 & T1)

3-  
th

4-  
th  
(C8 & T1)

5-

## Lateral cord

1-Lateral Pectoral nerve  
(C5,C6 & C7)

2-Lateral root of Median  
nerve  
(C5,C6 & C7)

3- Muscul**cutaneous** nerve  
(C5,C6 & C7)

## Medial cord

1-Medial Pectoral nerve  
(C8 & T1)

2-Medial root of Median nerve  
(C8 & T1)

3-Medial **cutaneous** nerve of  
the arm (C8 & T1)

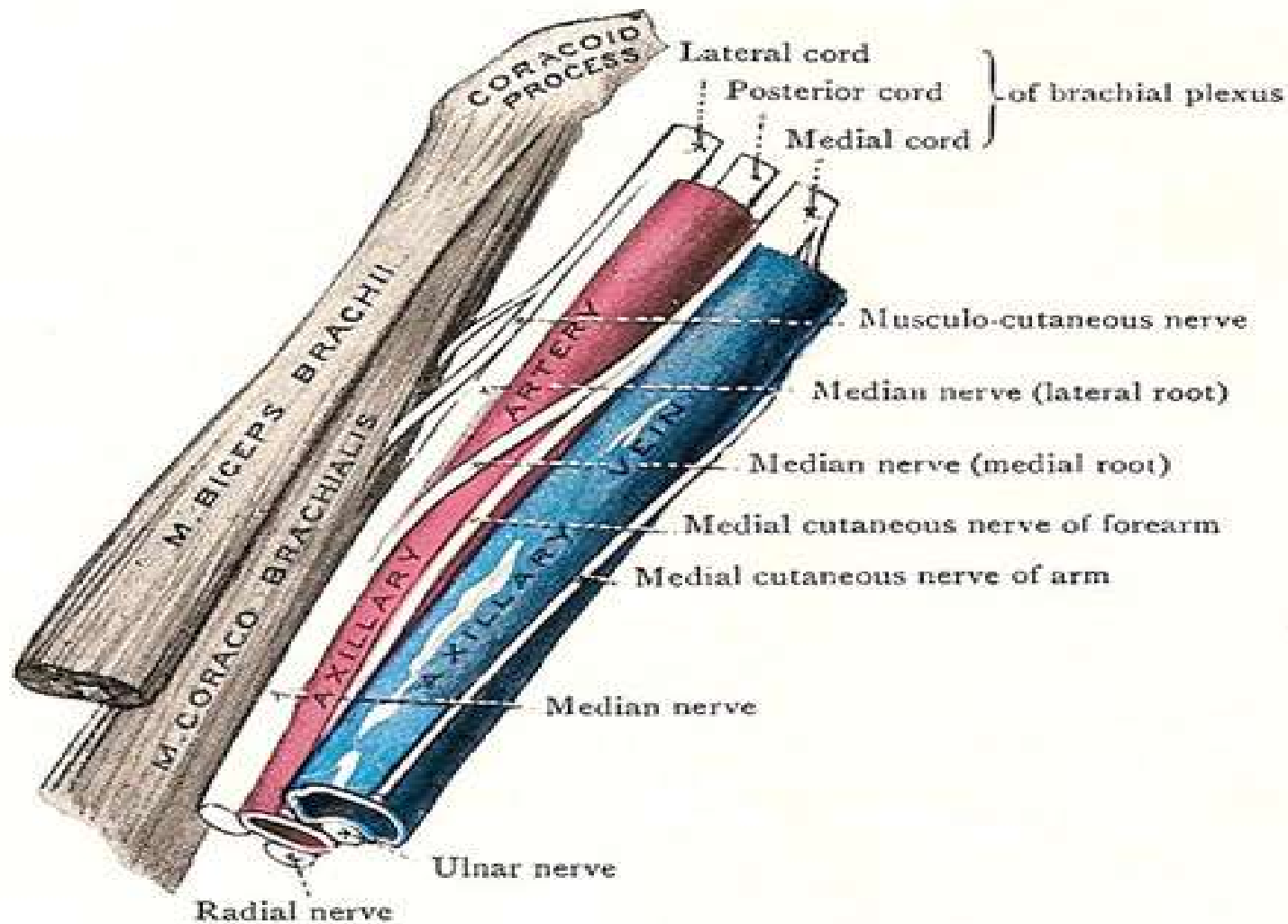
4-Medial **cutaneous** nerve of  
the forearm  
(C8 & T1)

5-Ulnar nerve (C7,C8 & T1)

## Branches from the Posterior Cord of the Brachial Plexus

- 1-Upper subscapular nerve (C5 & C6)
- 2-Lower Subscapular nerve (C5 & C6)
- 3-Axillary nerve (C5, & C6)
- 4-Thoracodorsal nerve (C 6,7 & 8)
- 5-Radial nerve (C5.6.7,8 & T1)

- The cords are related to 2nd part of axillary artery
- The branches are related to 3rd part of axillary artery



Thank You