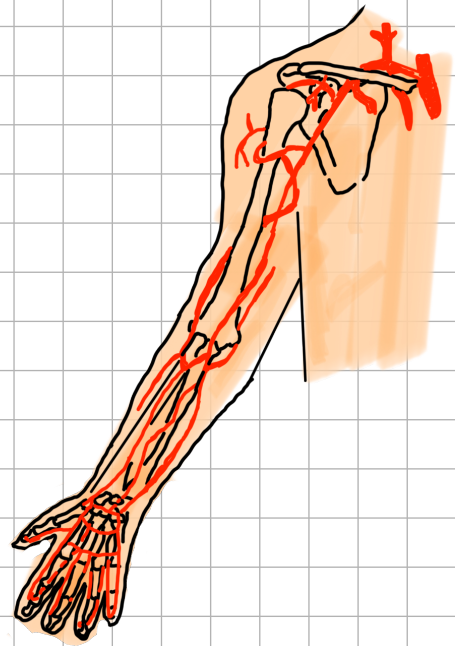


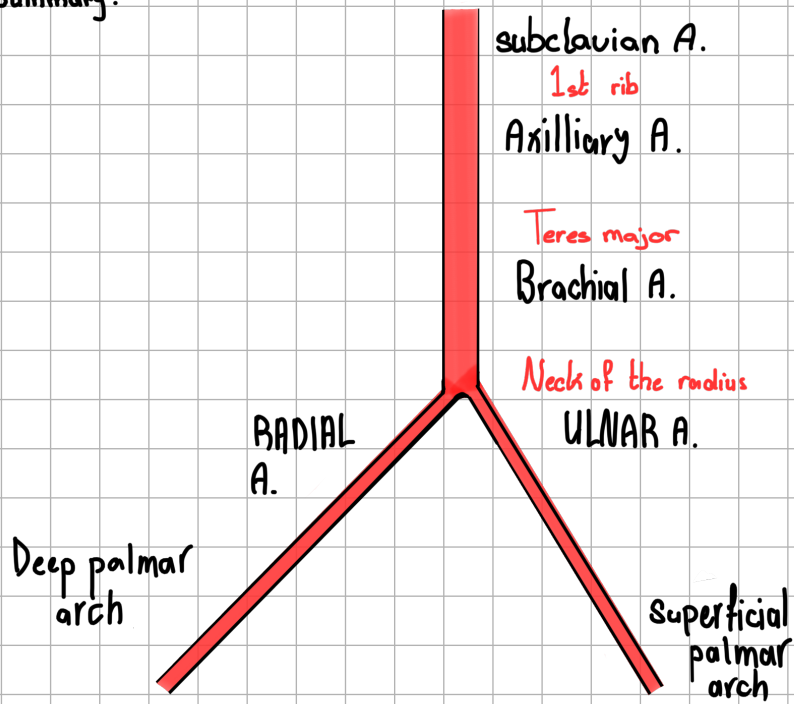
Blood Vessels of the Upper limb



| Artery | Beginning | Termination | Division | Branches | Course |
|--------------------|---|---|---|--|--|
| Axillary A. | 1. the outer border of the 1st Rib as continuation of the 3rd part of the subclavian artery | At the level of inferior border of teres major muscle to be the brachial Artery | pectoralis minor divides the artery into 3 parts: 1st part: Above the upper border of the pectoralis minor muscle 2nd part: behind the pectoralis minor muscle 3rd part: Below the lower border of the pectoralis minor muscle | 1st part: Superior thoracic A. 2nd part: Thoraco-acromial A. (2 bones, 2 muscle) Lateral thoracic 3rd part: Anterior circumflex A. posterior circumflex A. subscapular A. | The 1st & 2nd parts of the axillary A are related to Cords of the brachial plexus and the 3rd part of the axillary A is related to the branches of the cords of the plexus |
| Brachial A. | At the lower border of the teres major as a continuation of the Axillary A. | At the neck of radius by dividing into radial & ulnar arteries | _____ | 1. Nutrients A. 2. Muscular branches 3. profunda brachii 4. Superior ulnar collateral A. 5. Inferior ulnar collateral A. | In the upper part of the arm, it's medial to the Humerus In the lower part of the arm it becomes anterior to the Humerus |

| Artery | Beginning | Termination | Division | Branches | Course |
|-----------|---|---|----------|---|--|
| Radial A. | From brachial artery at the level of the neck of the radius | it ends as deep palmar arch of the hand | — | <ol style="list-style-type: none"> 1. Muscular Branches 2. Radial Recurrent artery 3. palmar carpal branch 4. dorsal carpal branch 5. Superficial palmar branch 6. <ul style="list-style-type: none"> 1st dorsal metacarpal princeps pollicis A. Radialis indicis A. | <ul style="list-style-type: none"> • it descends in the lateral part of the forearm down to the front of the lower end of the radius (the site of the radial pulse) • Then, it deviates posteriorly to run in the floor of the anatomical snuff-box to reach the dorsum of the hand clinical importance:- <ul style="list-style-type: none"> • Counting of the pulse • Arterial blood gases sample • Cardiac catheterization |
| Ulnar A. | From brachial artery at the level of the neck of the radius | it end as superficial palmar arch of the hand | — | <ol style="list-style-type: none"> 1. Muscular Branches 2. Anterior ulnar recurrent A. 3. posterior ulnar recurrent A. 4. The common interosseous A. 5. palmar carpal branch 6. dorsal carpal branch 7. Deep palmar branch | <ul style="list-style-type: none"> • In the upper 1/3 of the forearm it is oblique descending medially to the medial side, then vertically down to the wrist • It enters the hand by passing in front of the flexor retinaculum lateral to ulnar nerve |

● Summary:



Branches of profunda brachii A:-

- Nutrient artery
- Muscular branches
- Ascending branch
- Middle collateral branch (posterior descending)
- Radial collateral branch (Anterior descending)

Don't AL-retain