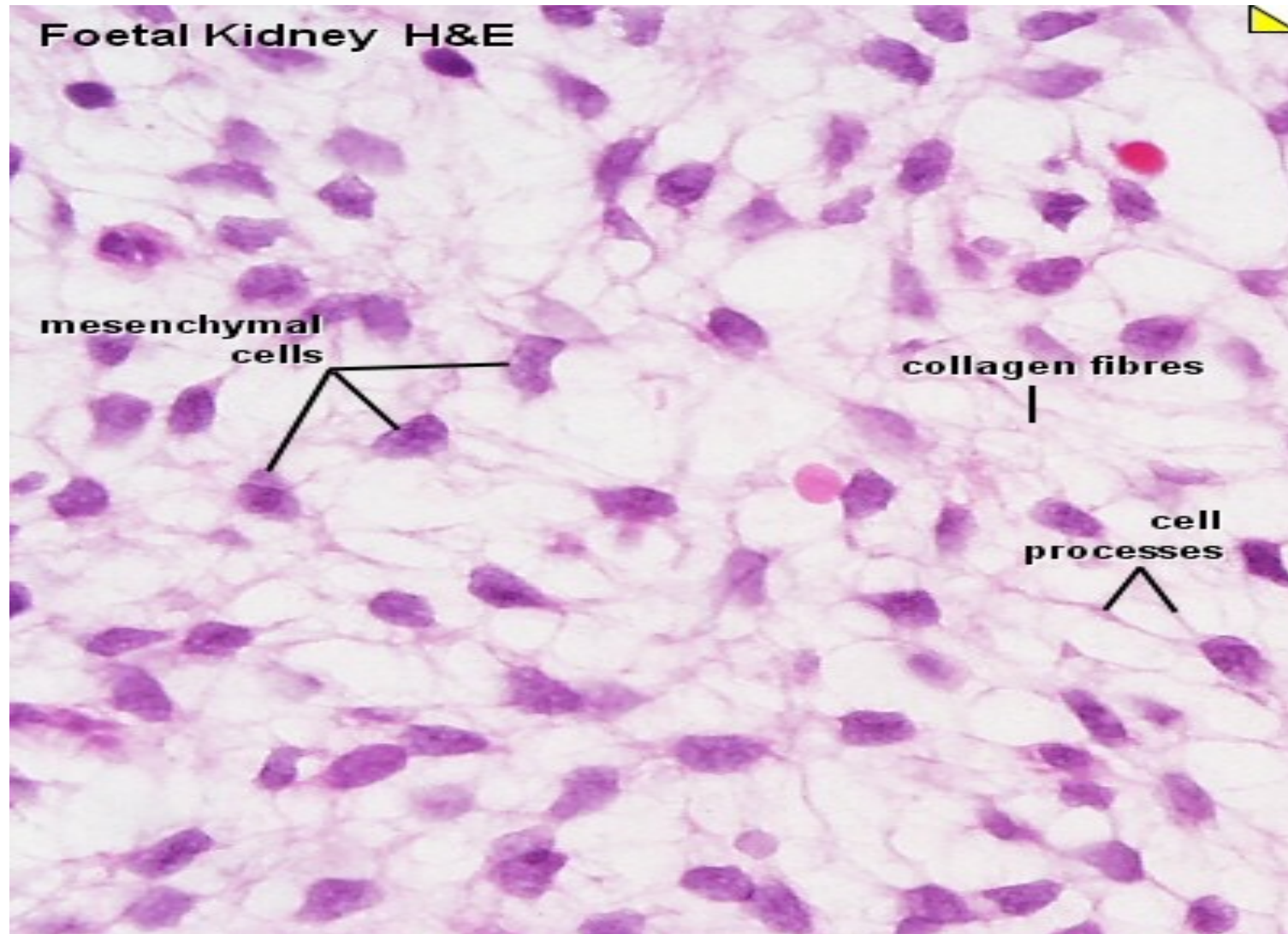


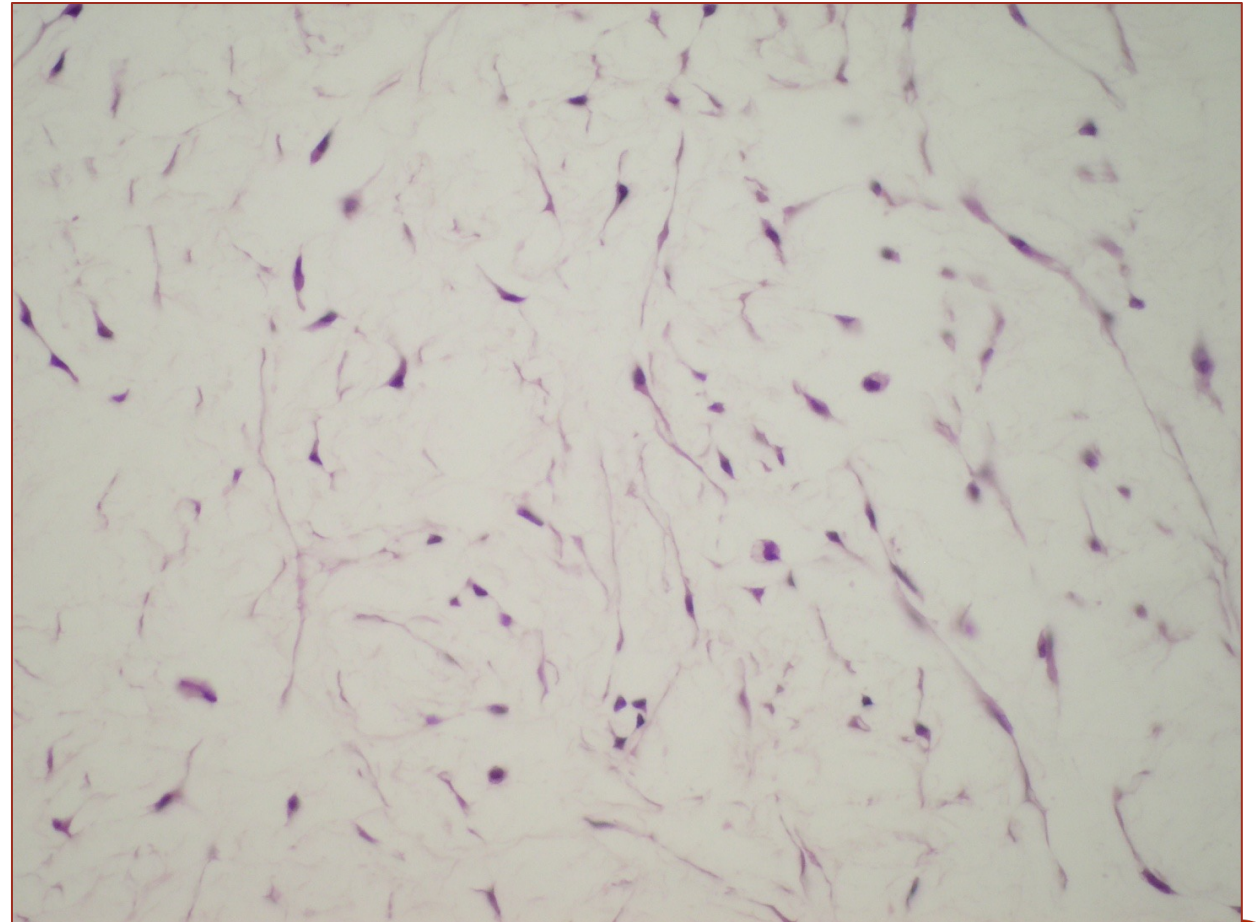
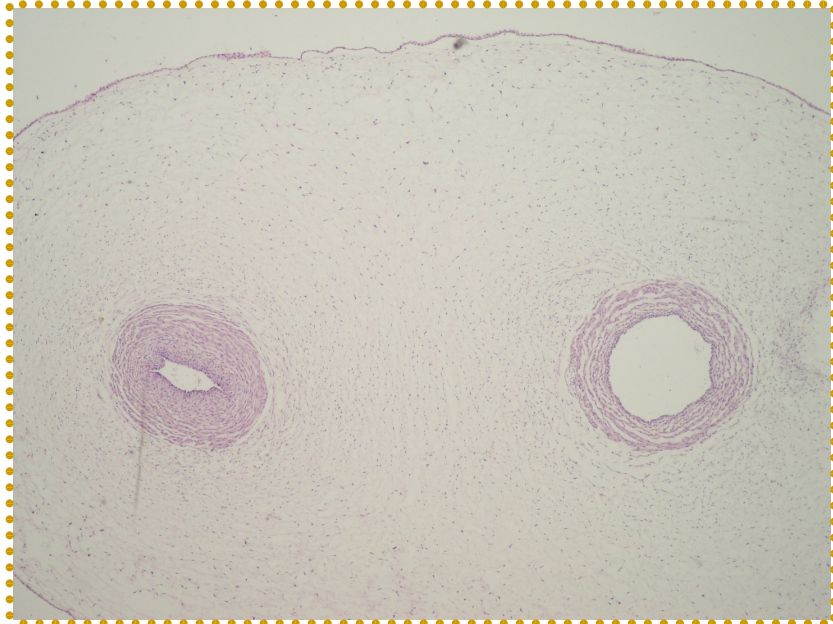
CONNECTIVE TISSUE (CT) 1

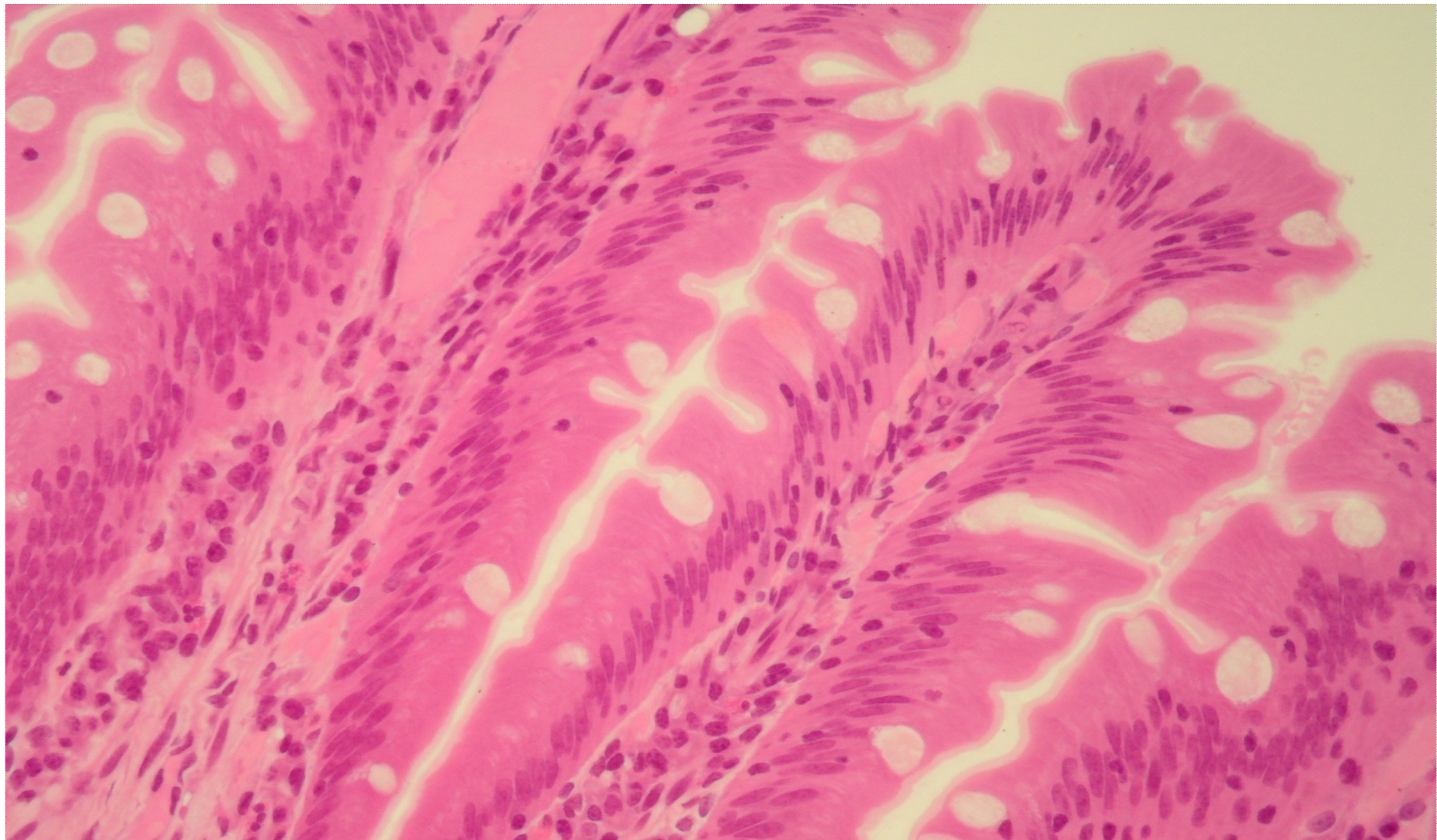


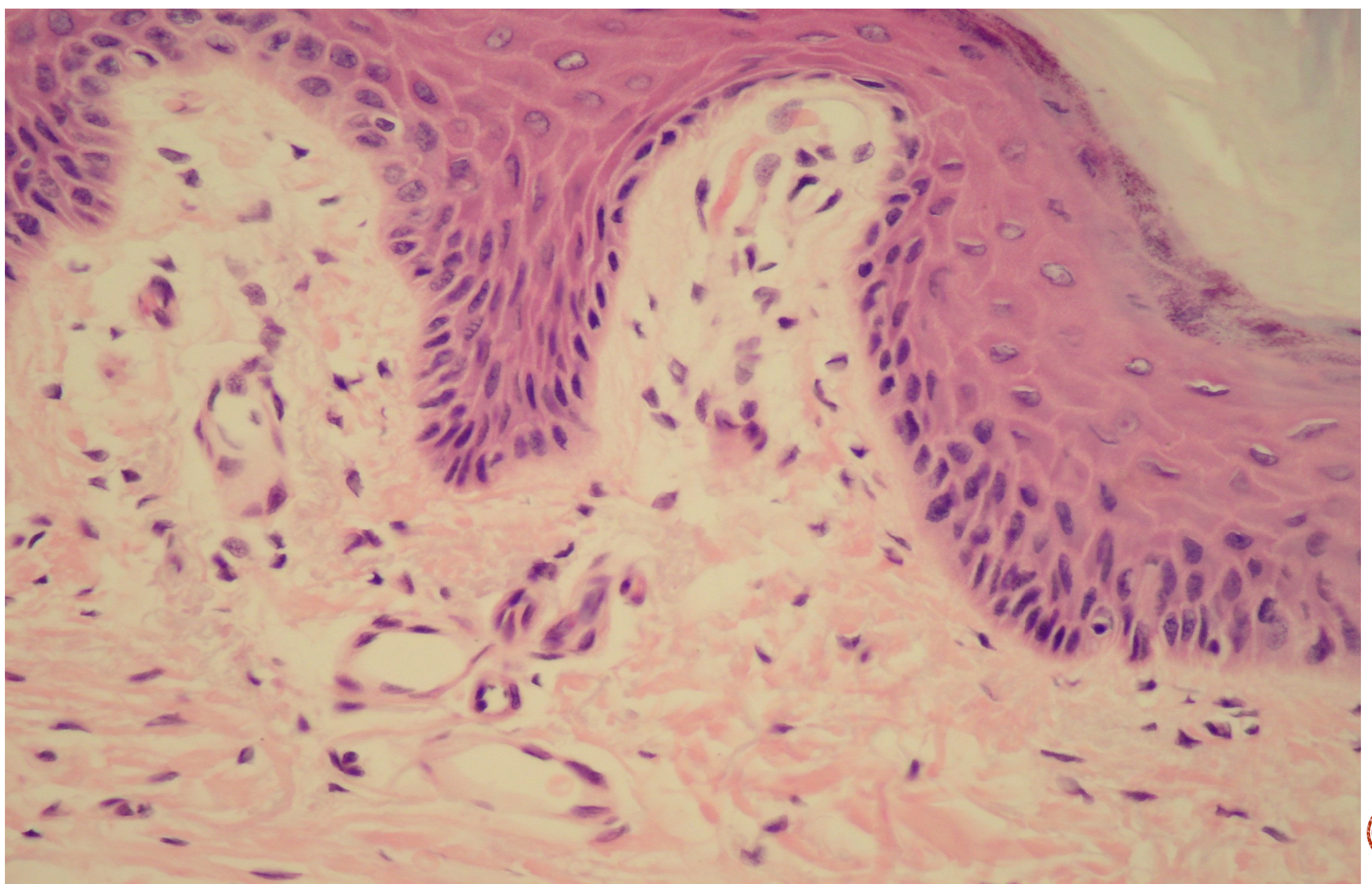
MESENCHYME

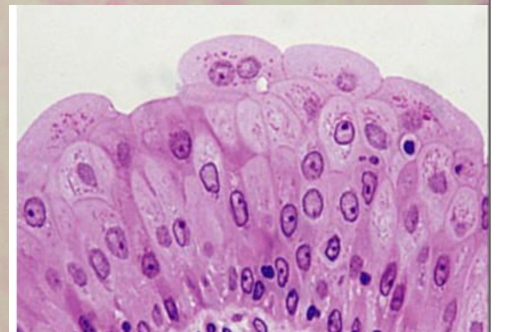
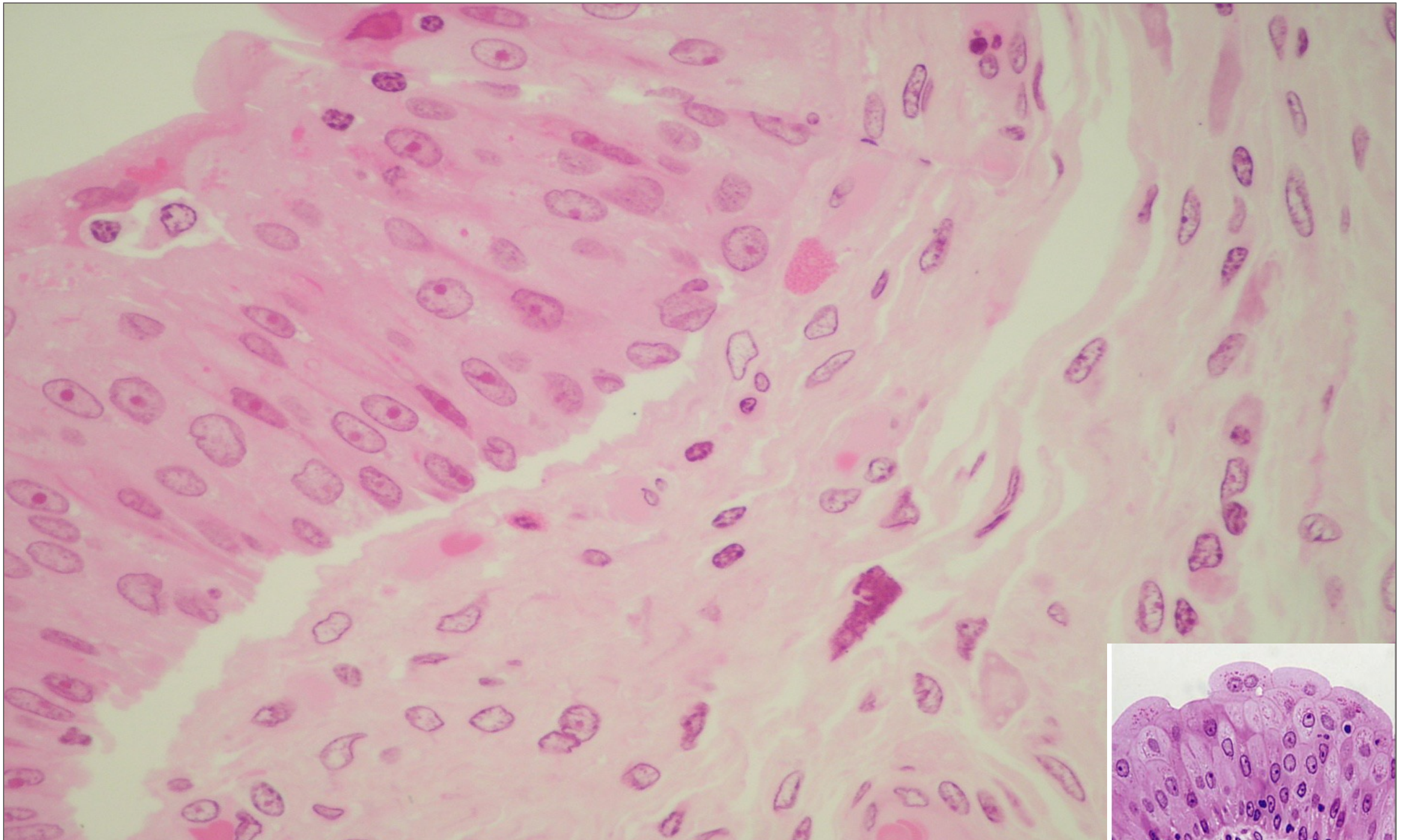


MUCOID CONNECTIVE TISSUE

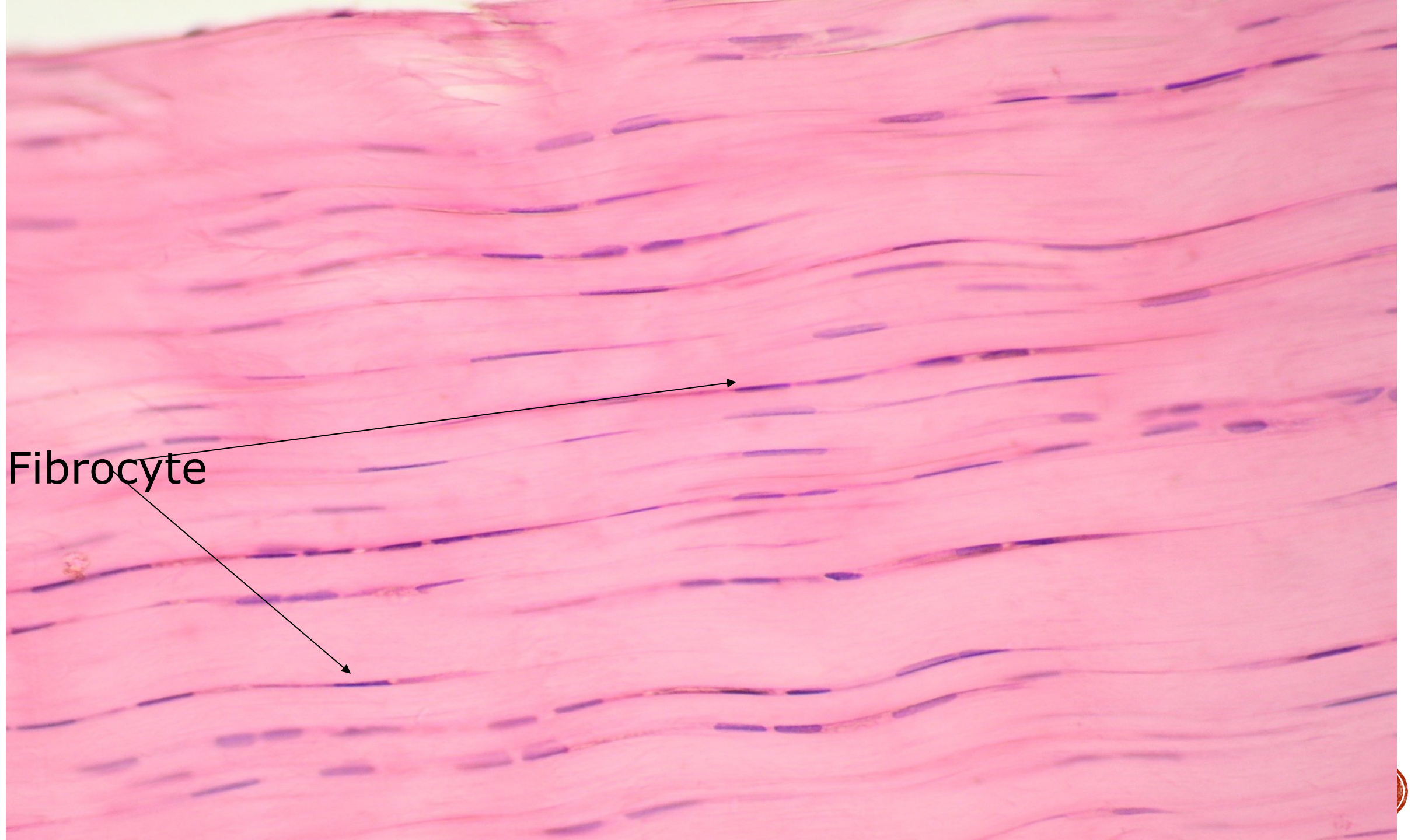


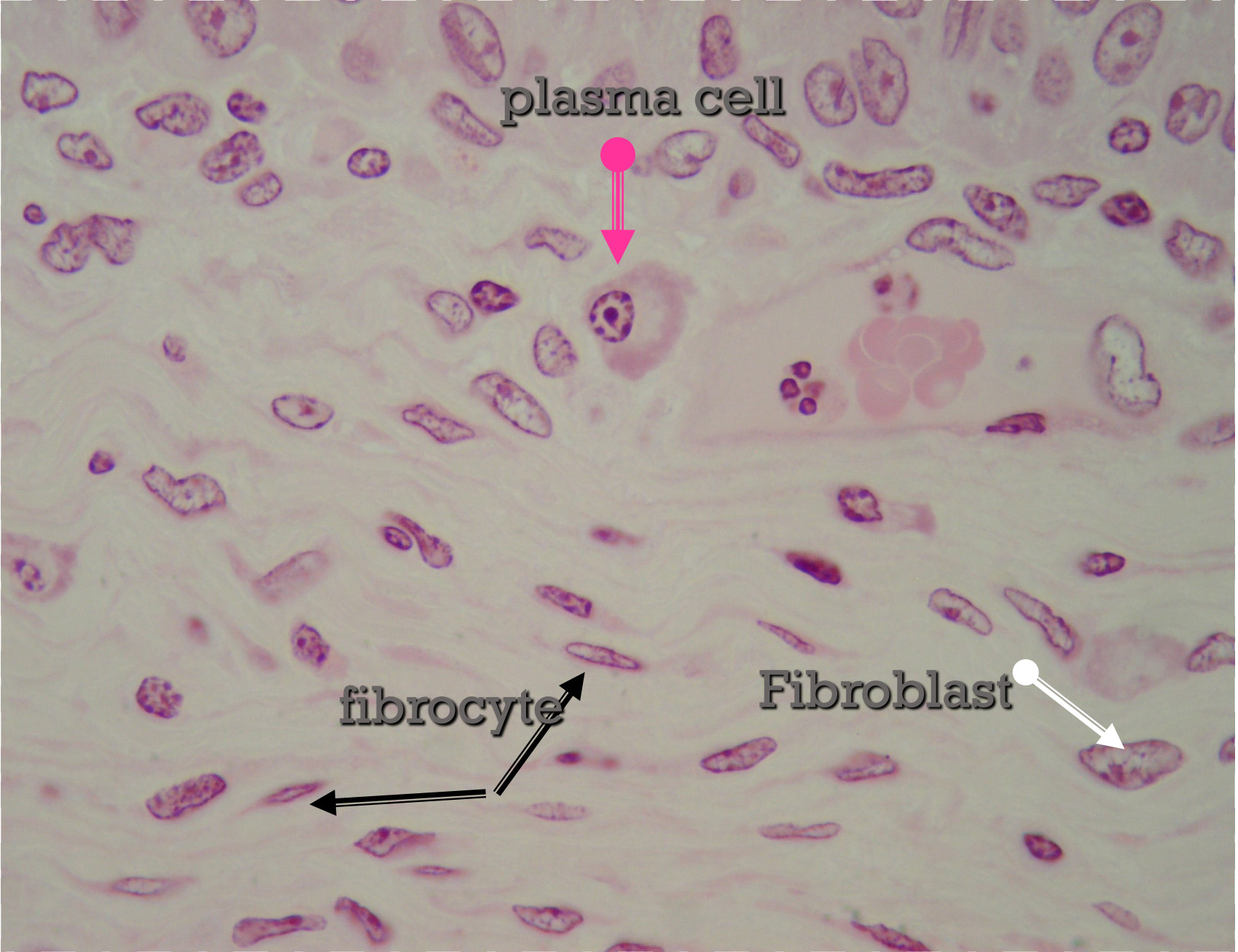


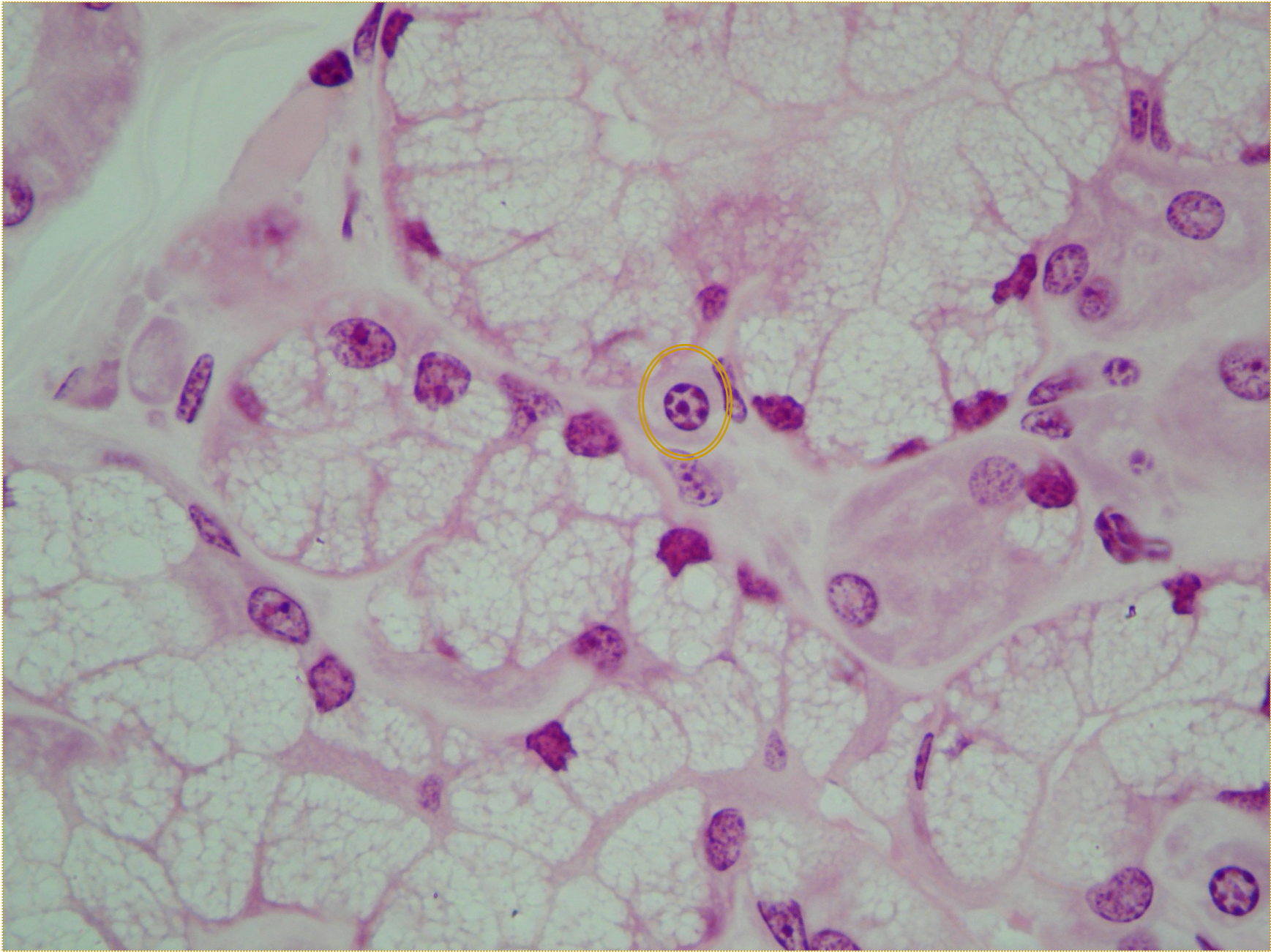




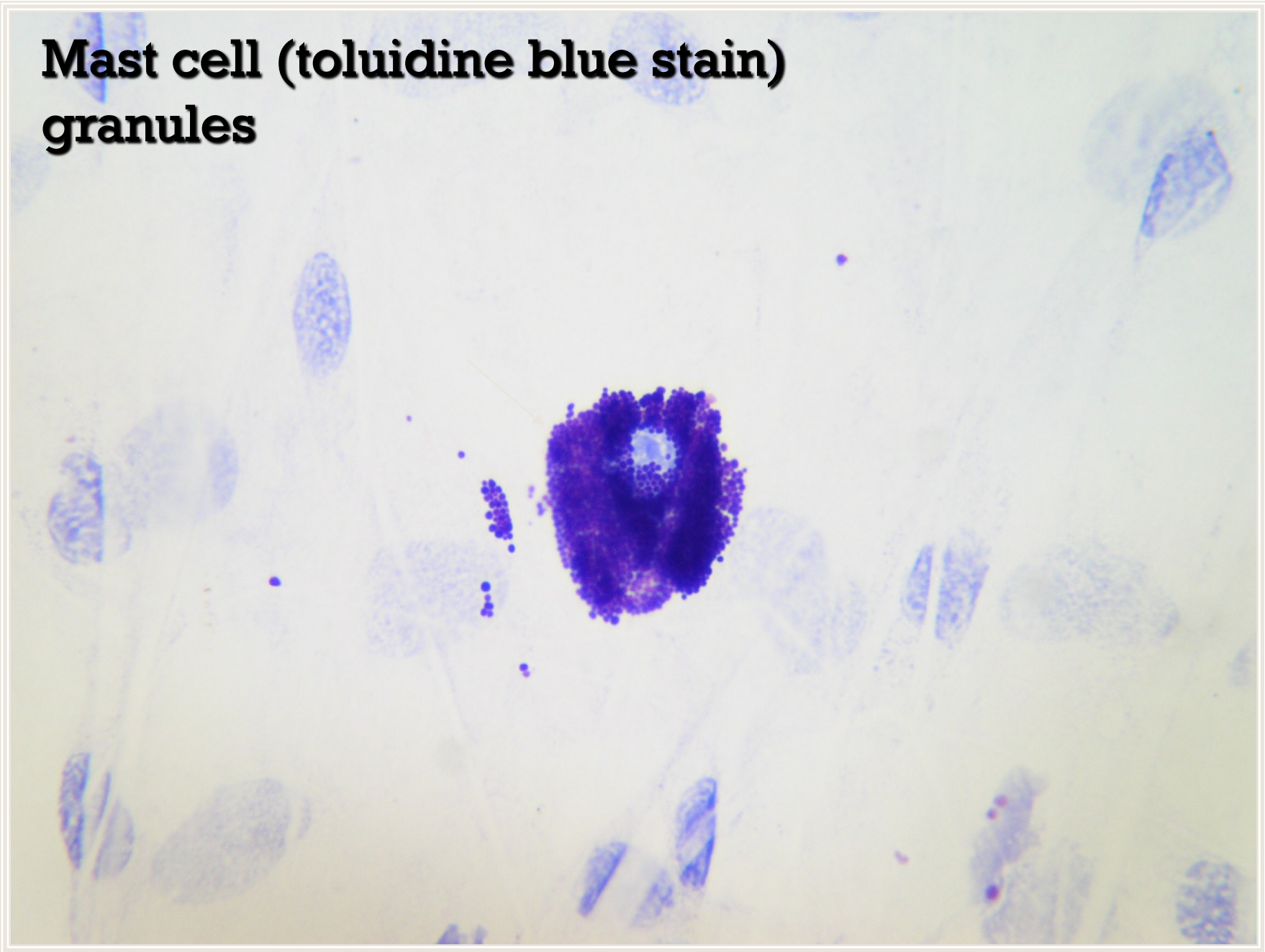
Fibrocyte



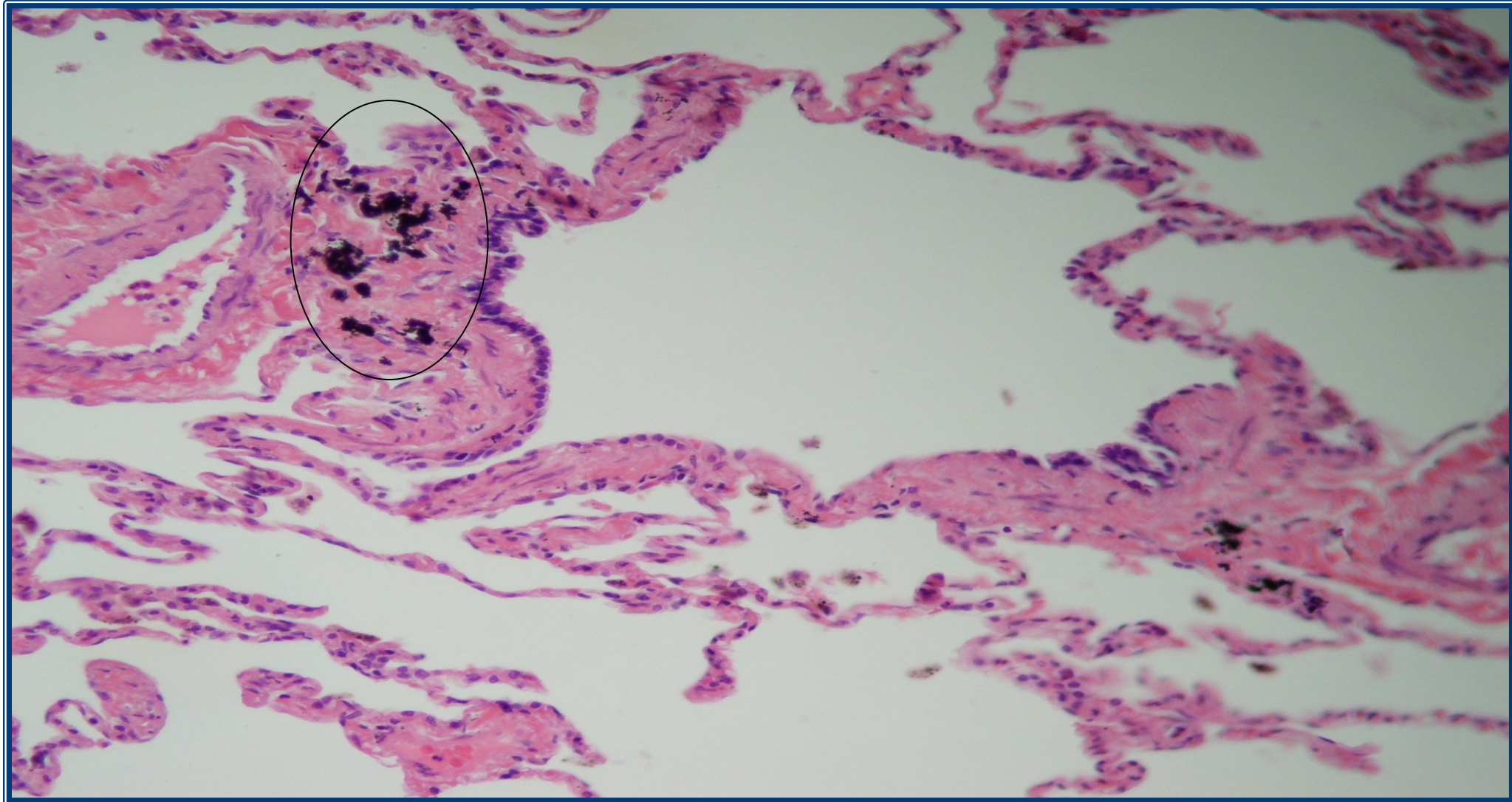




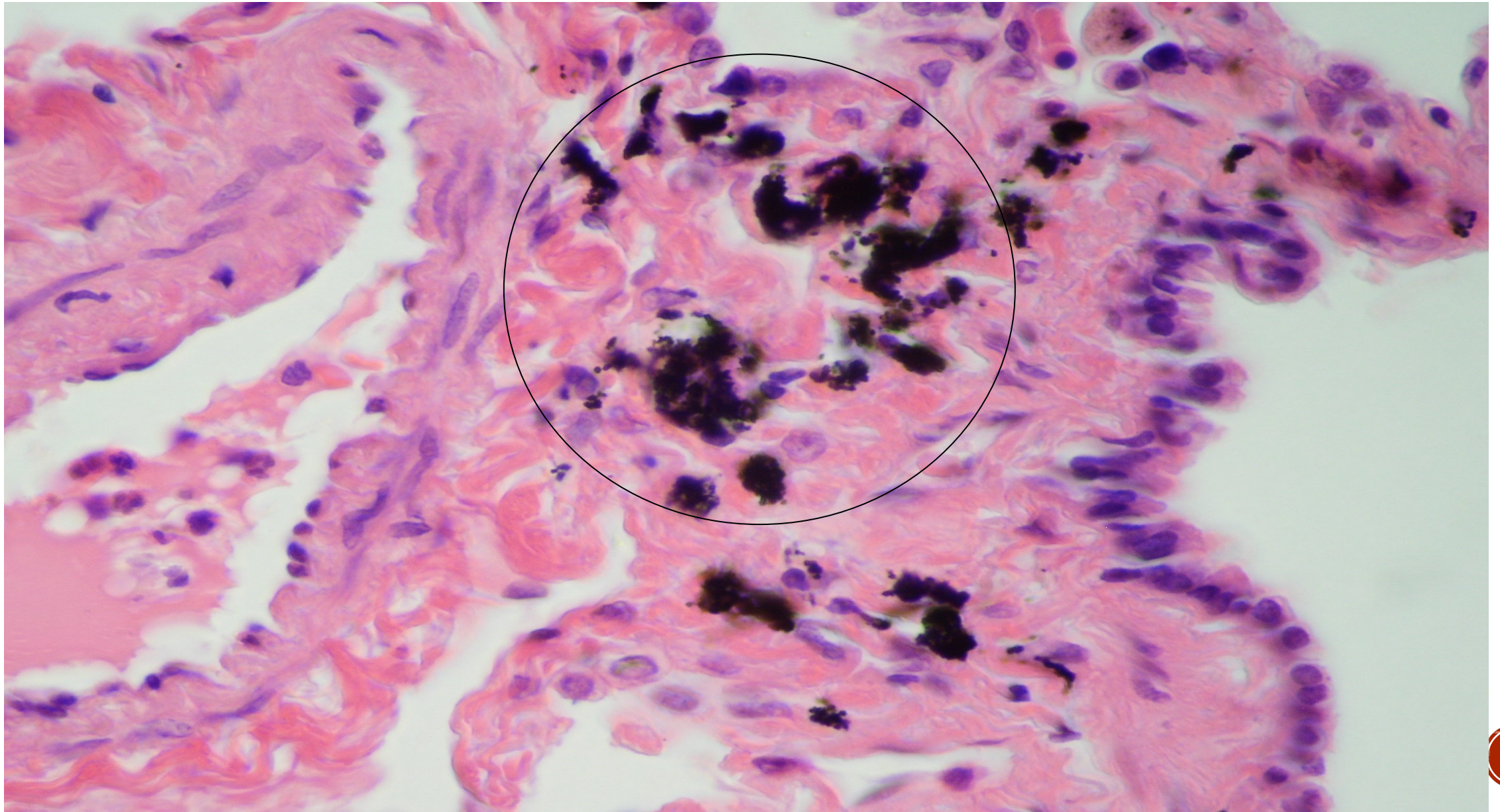
**Mast cell (toluidine blue stain)
granules**

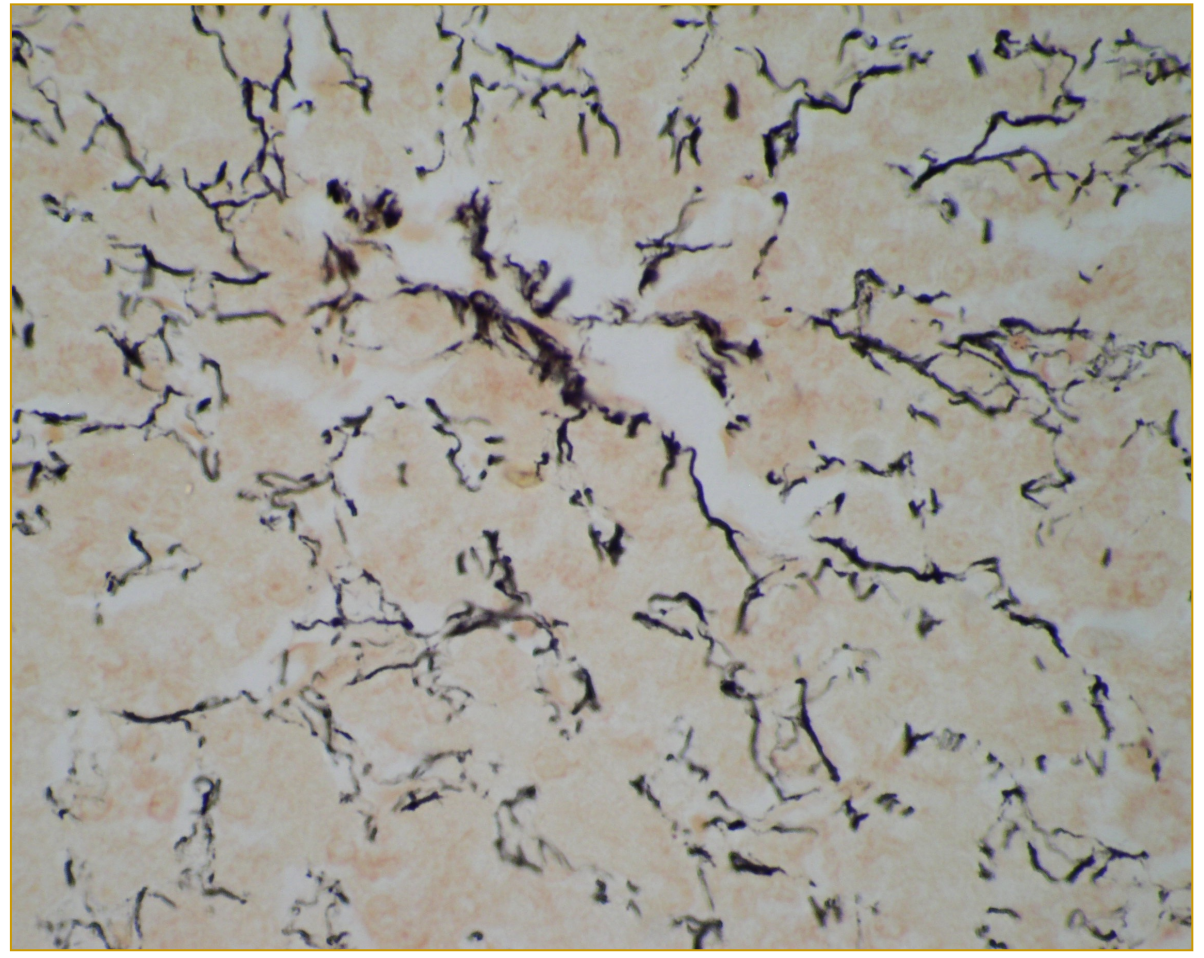
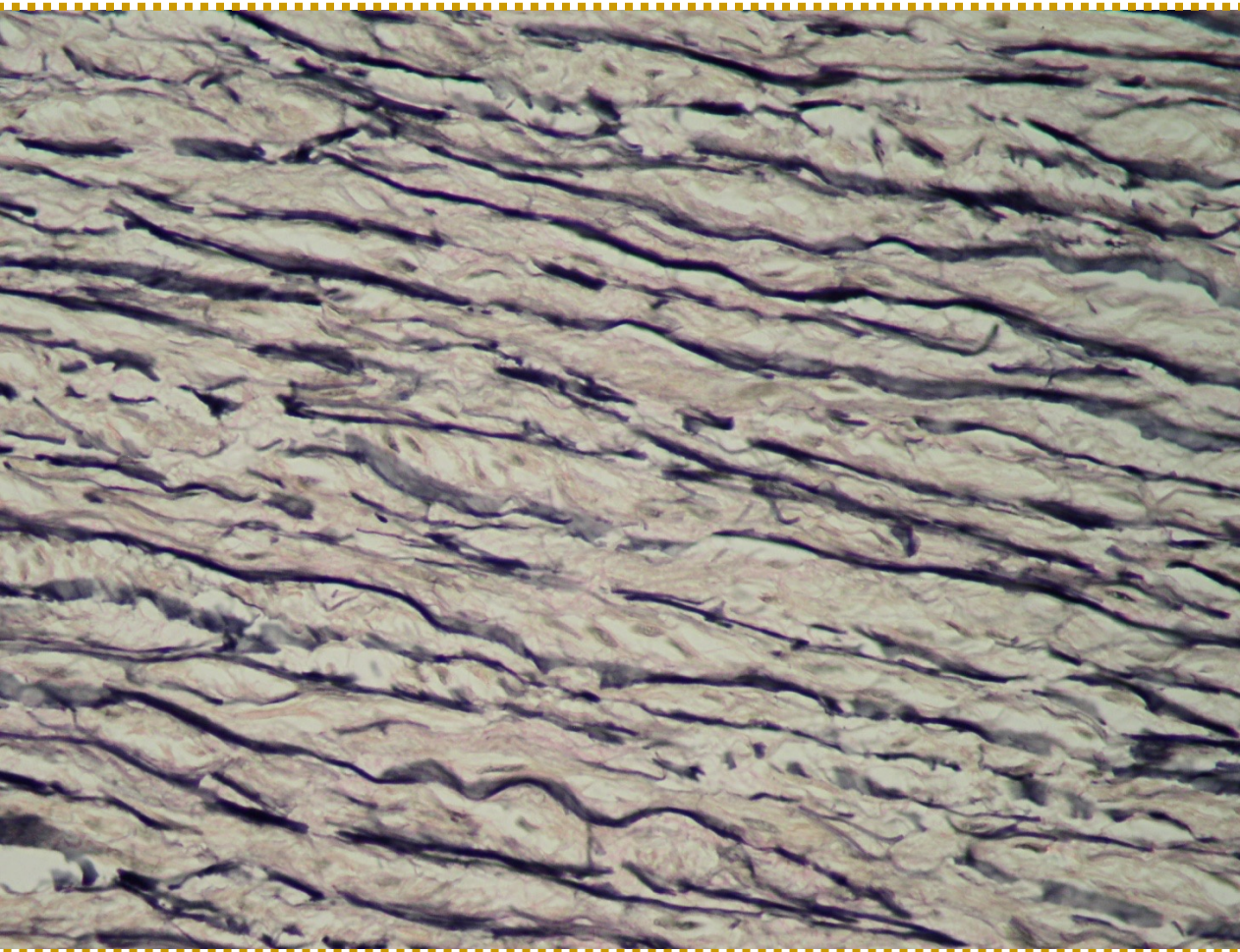


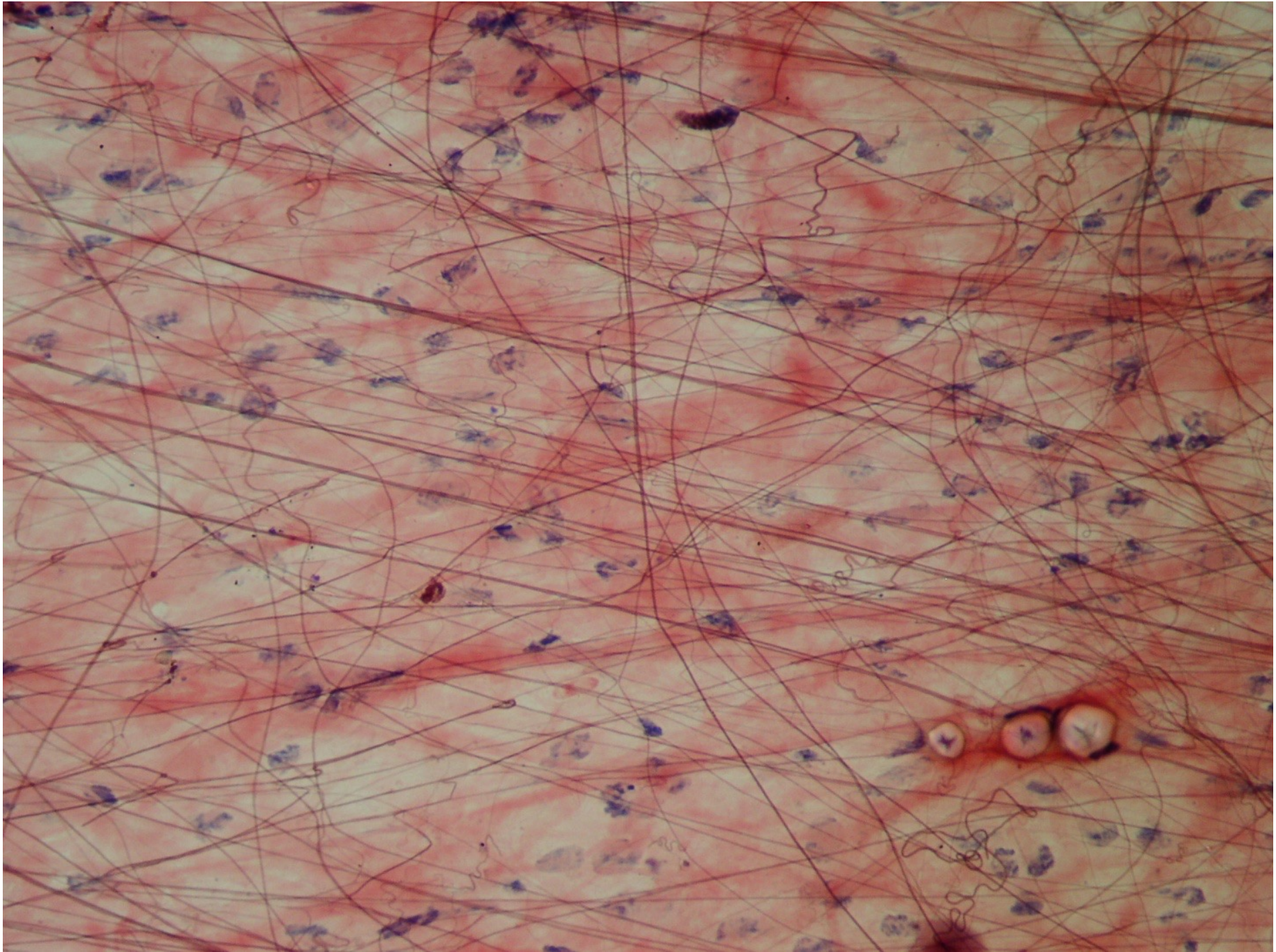
LUNG TISSUE

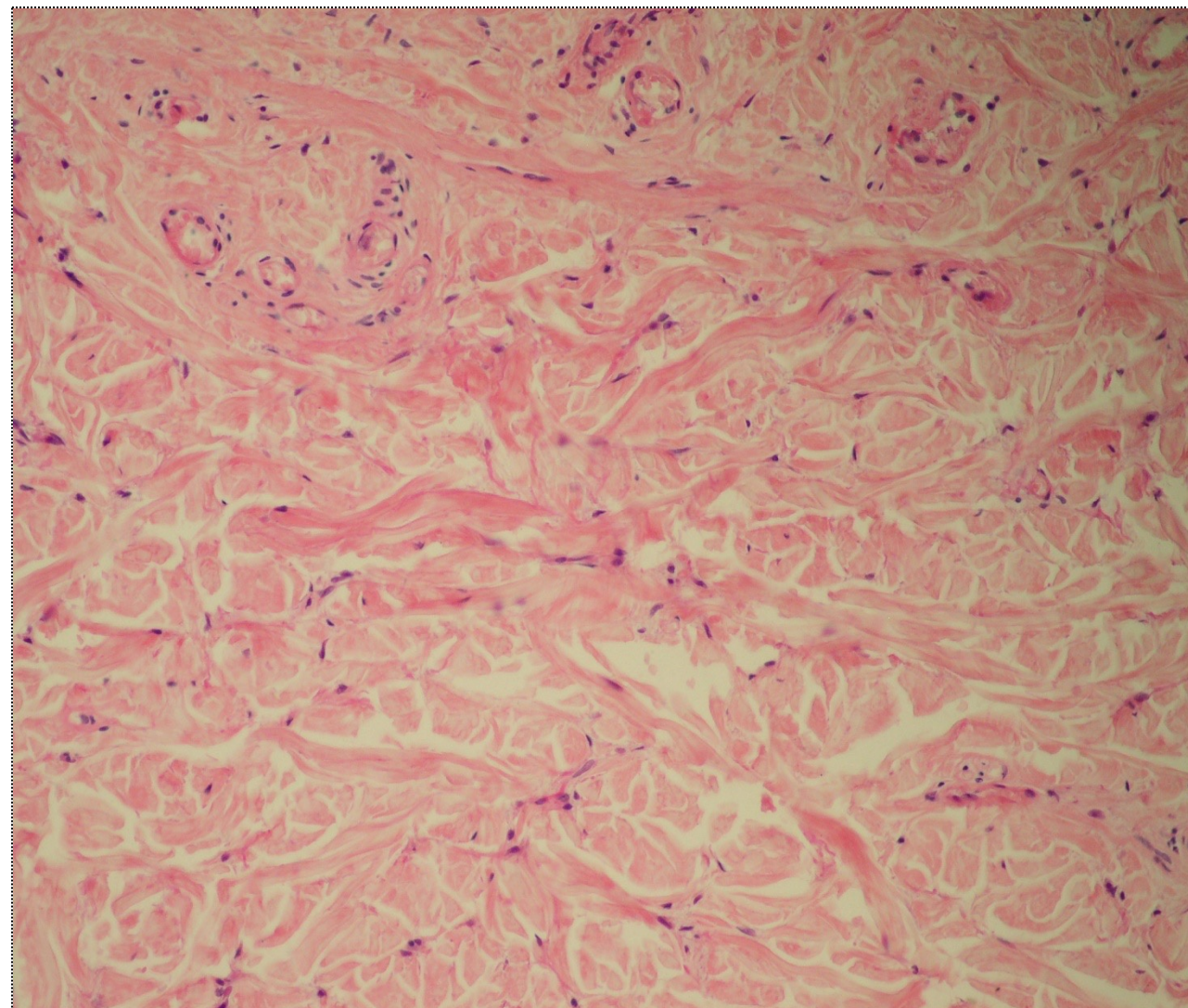
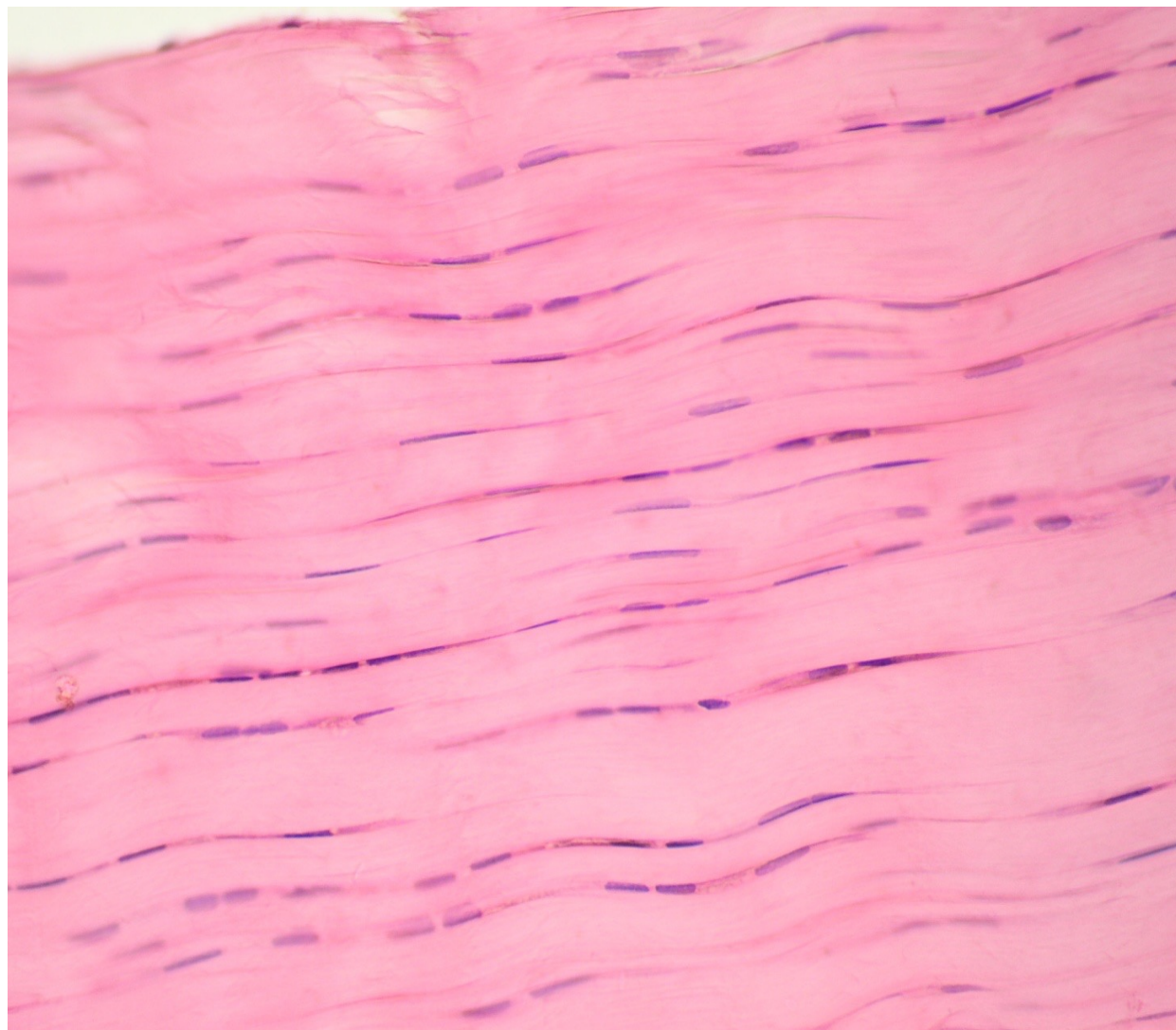


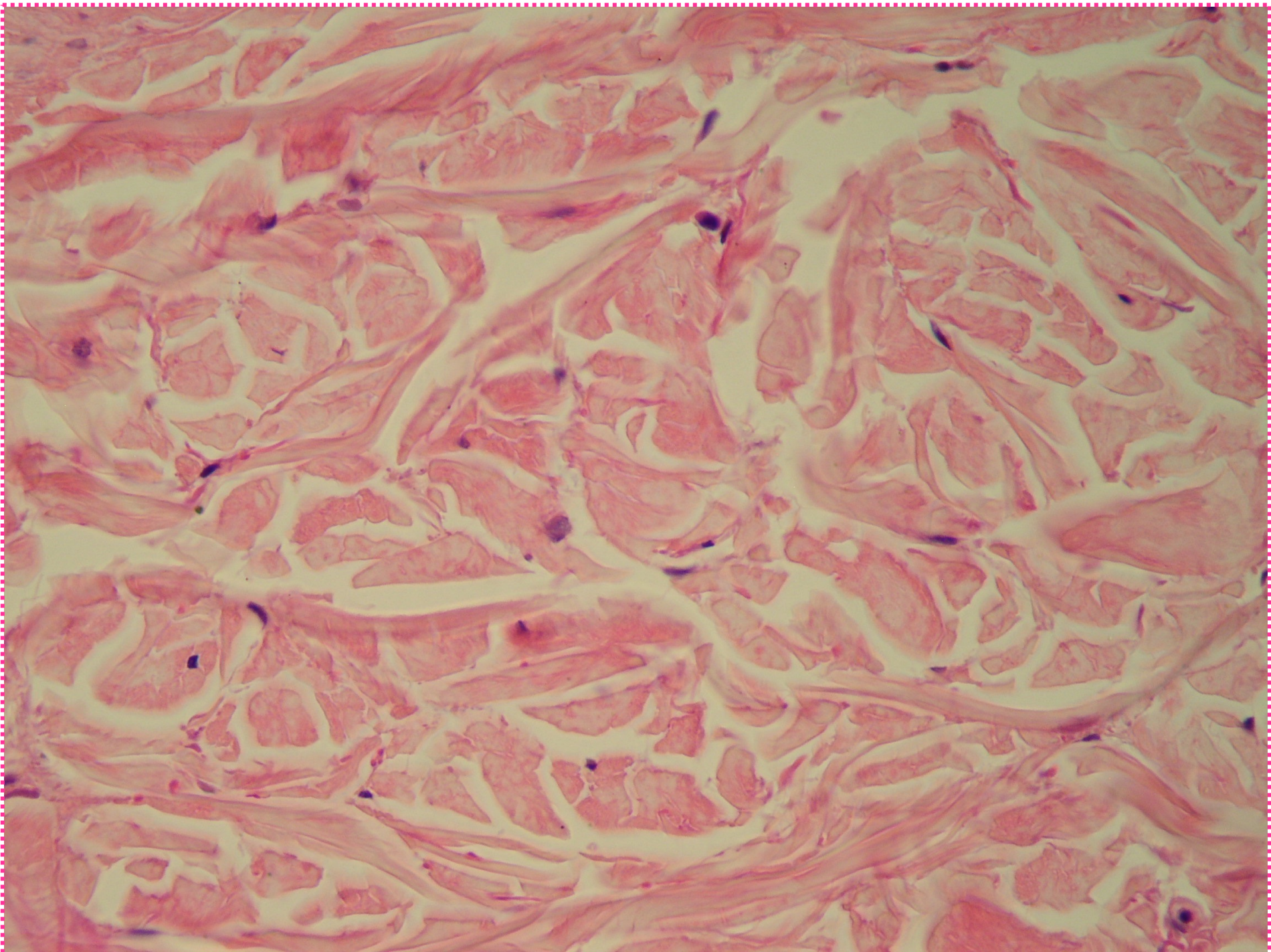
ALVEOLAR MACROPHAGE=DUST CELL

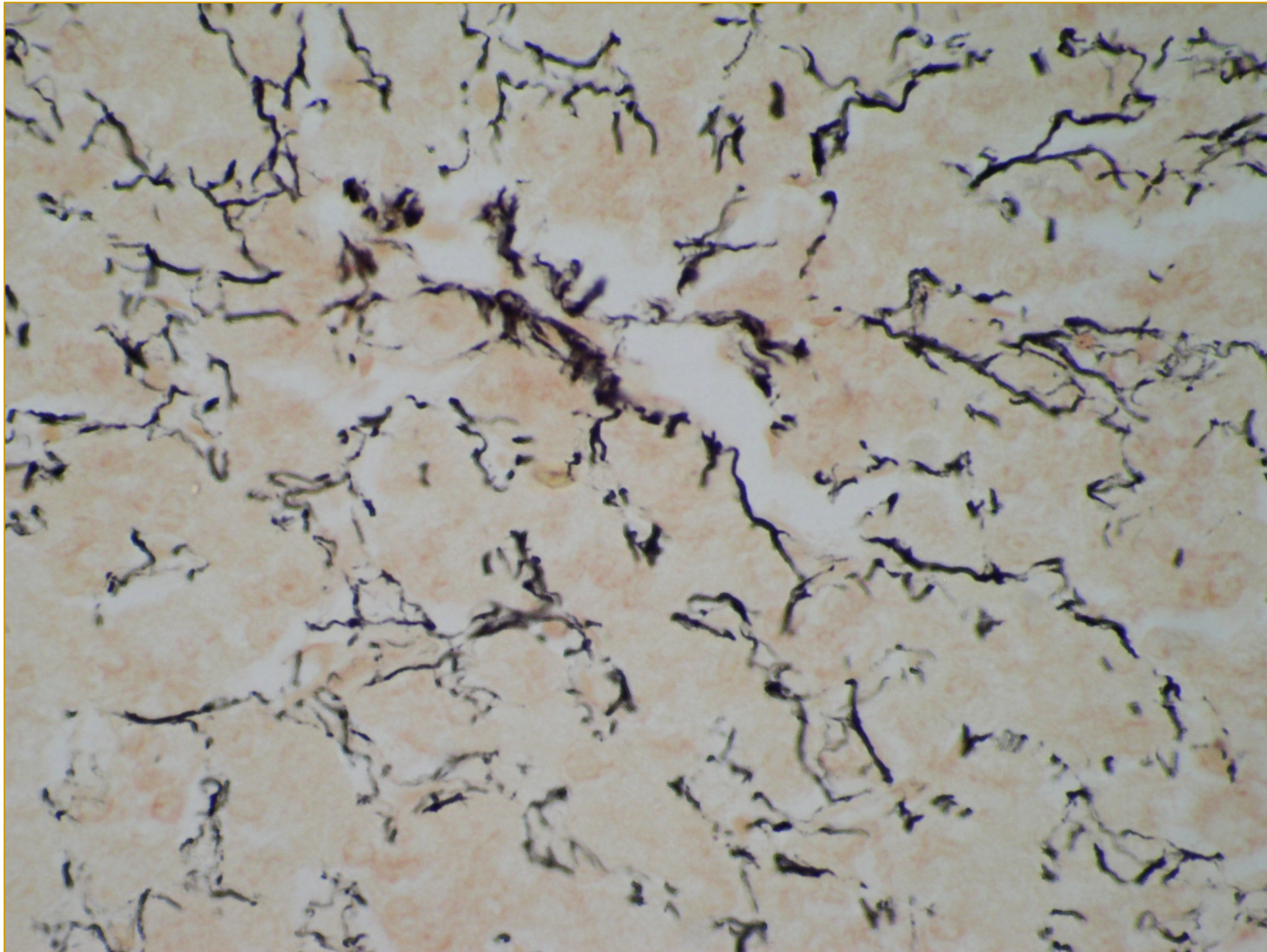


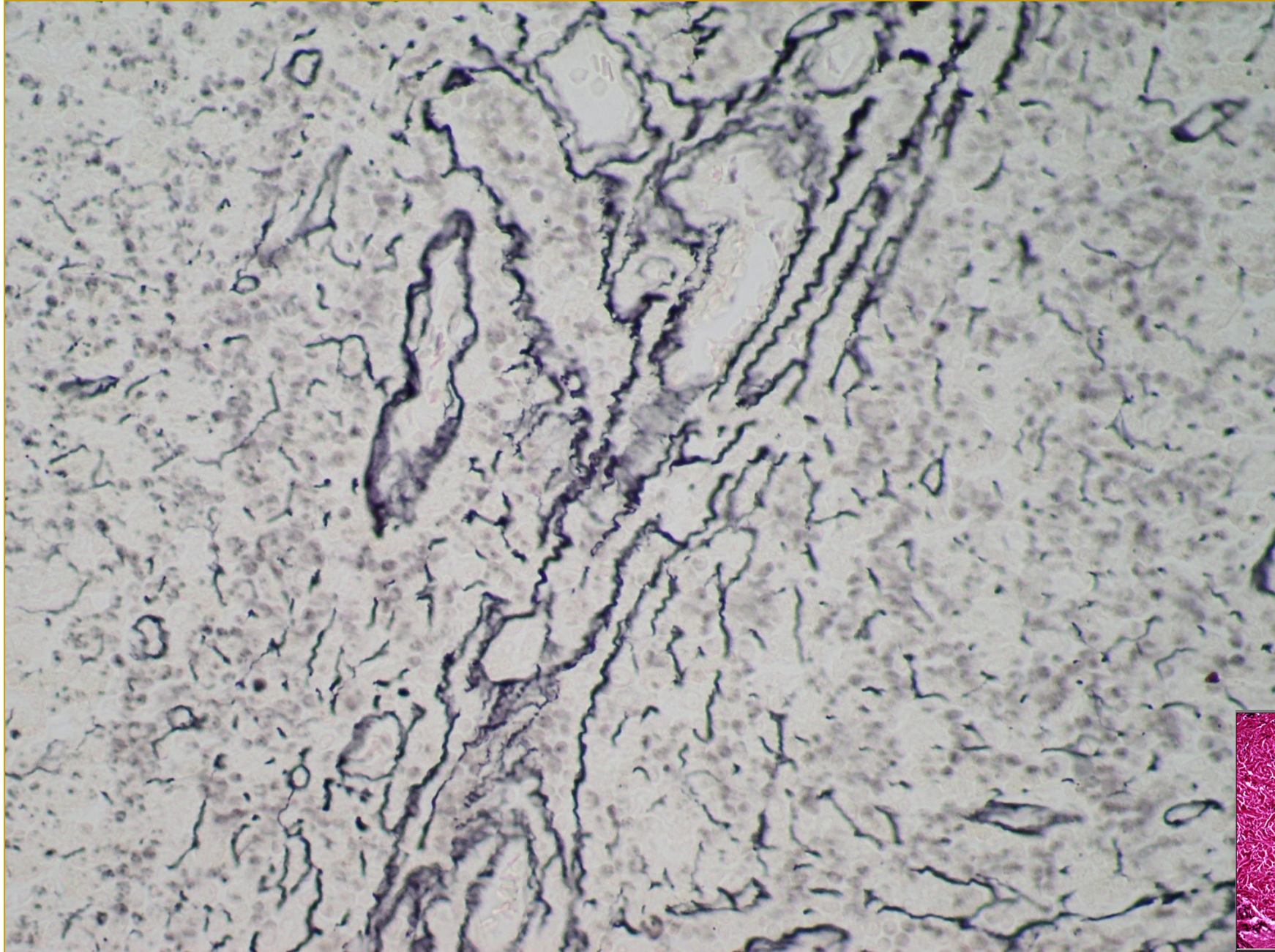


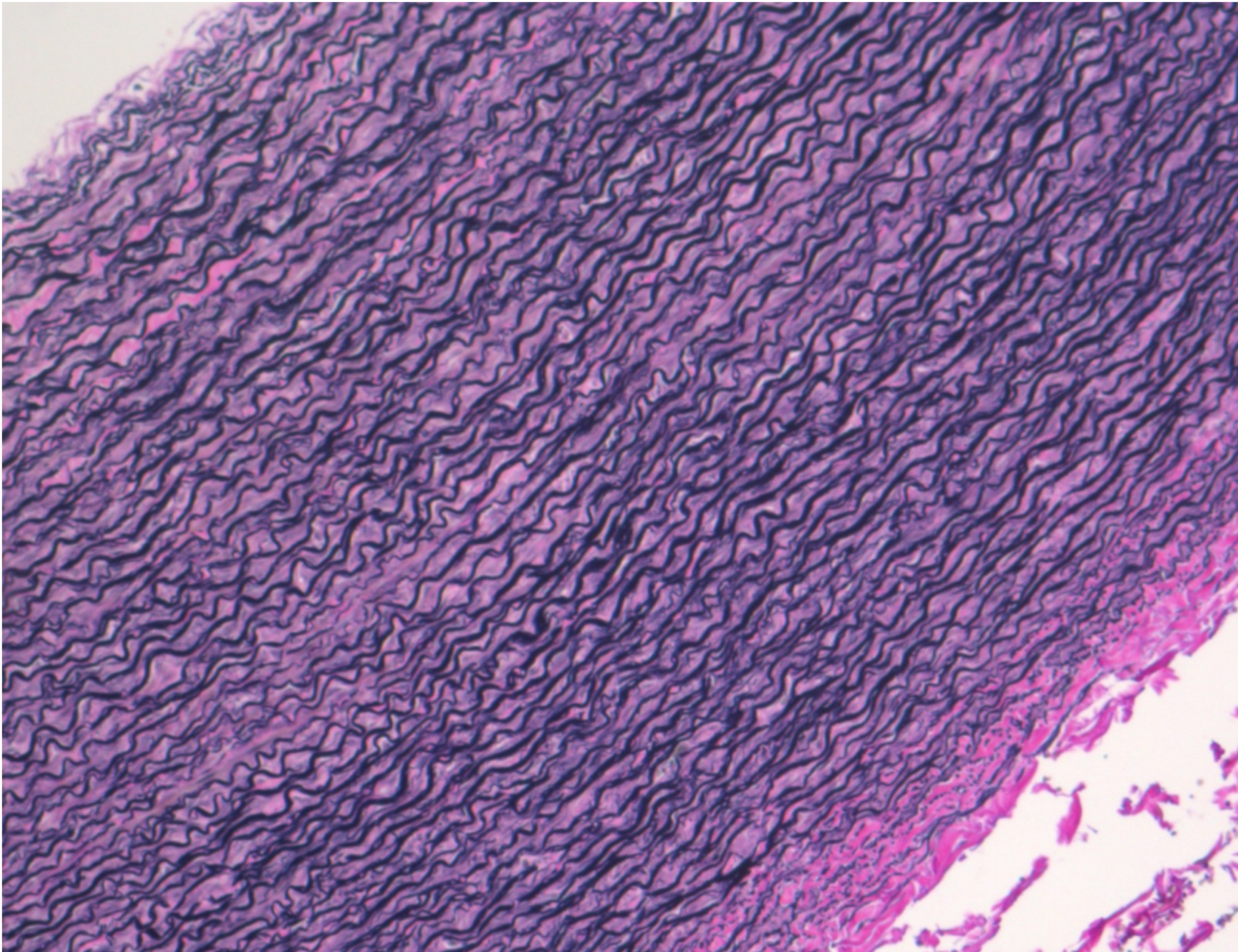


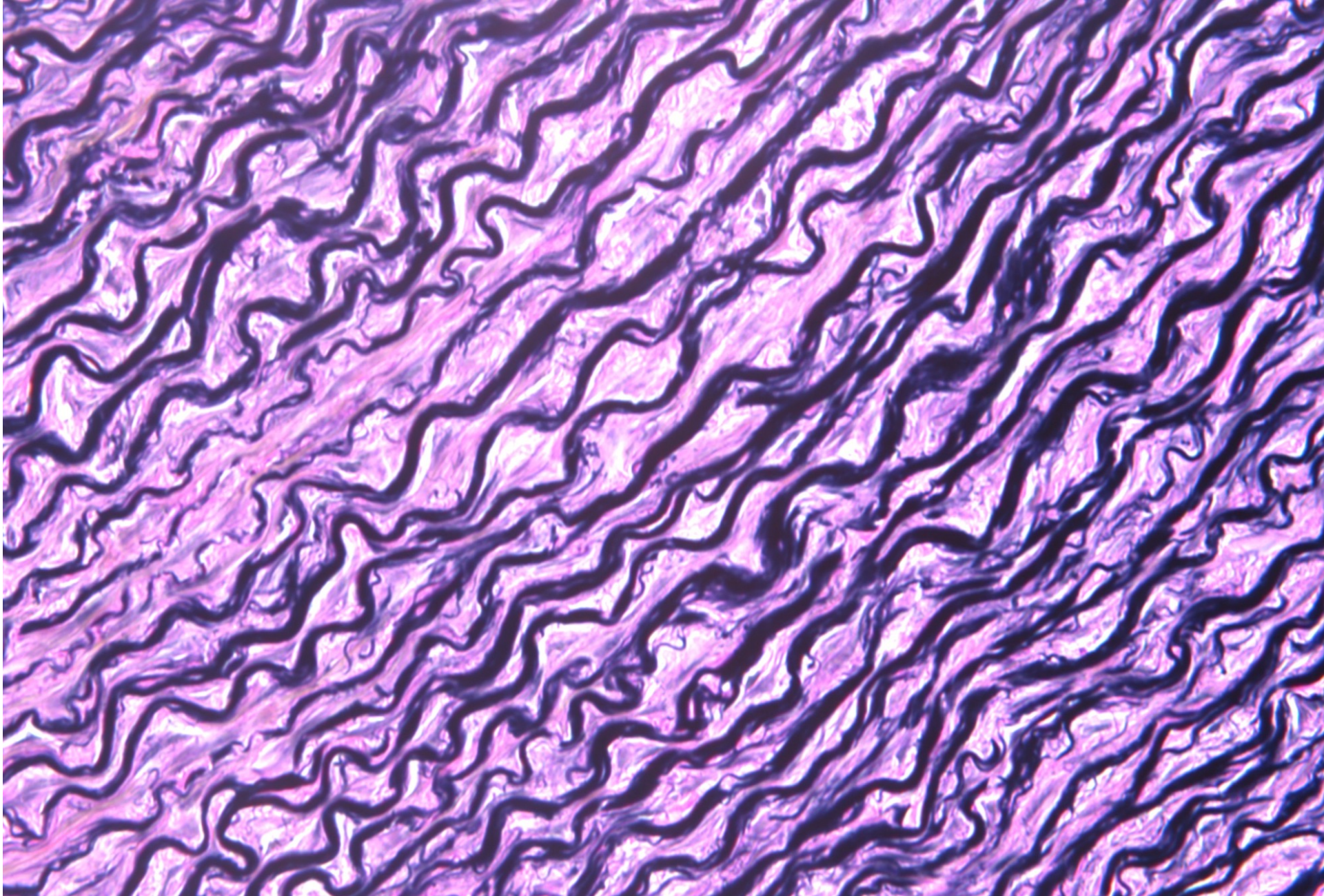




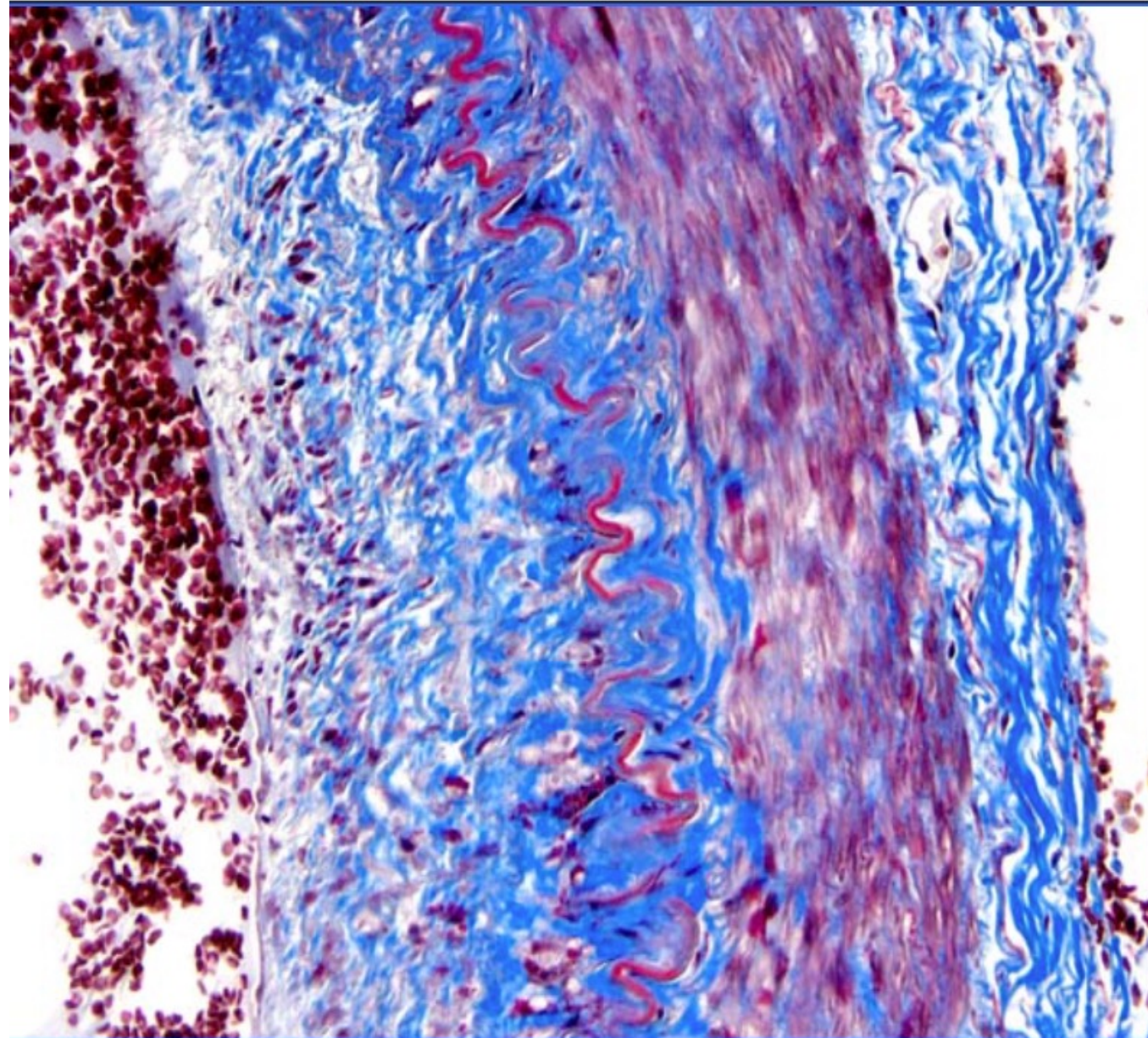




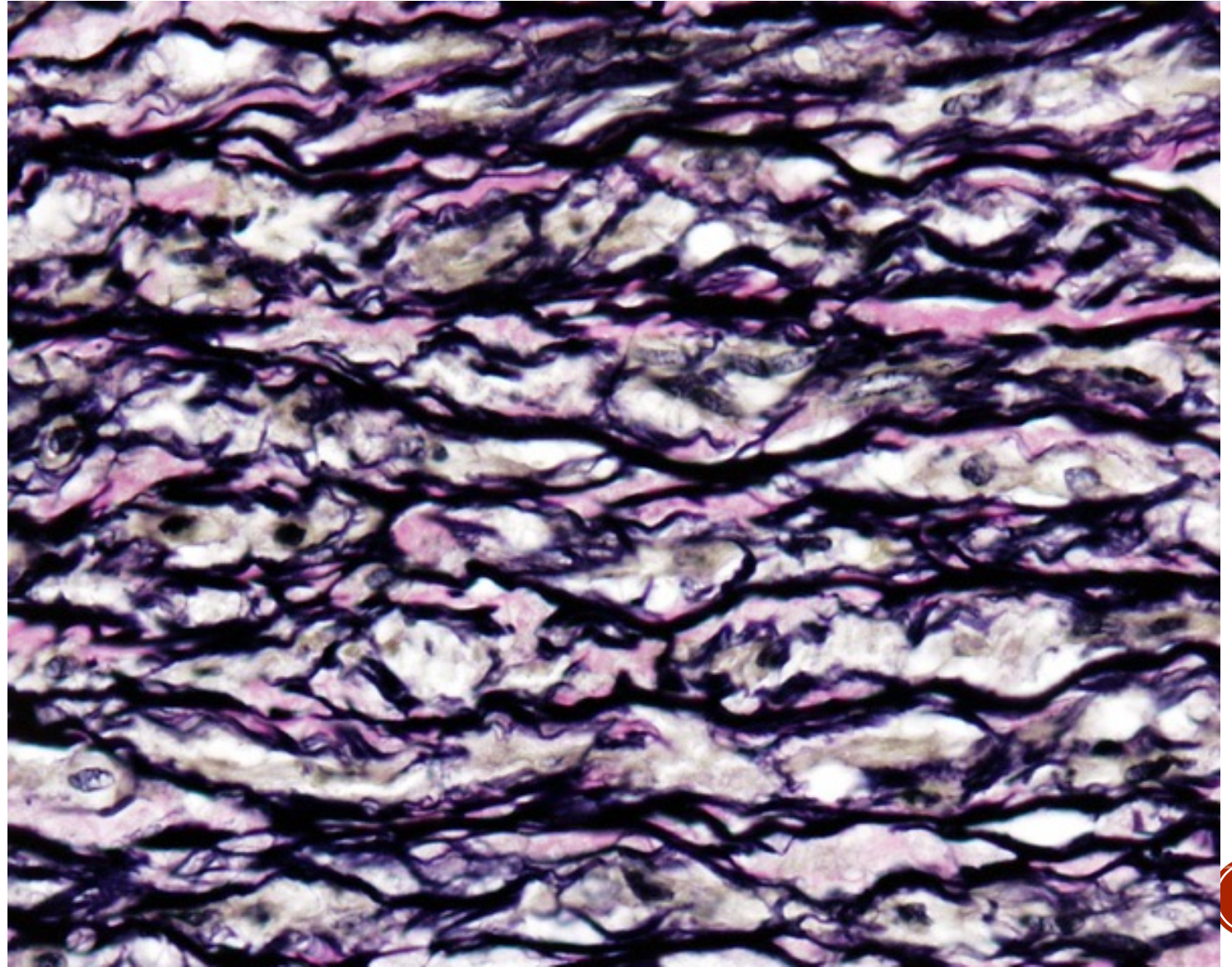


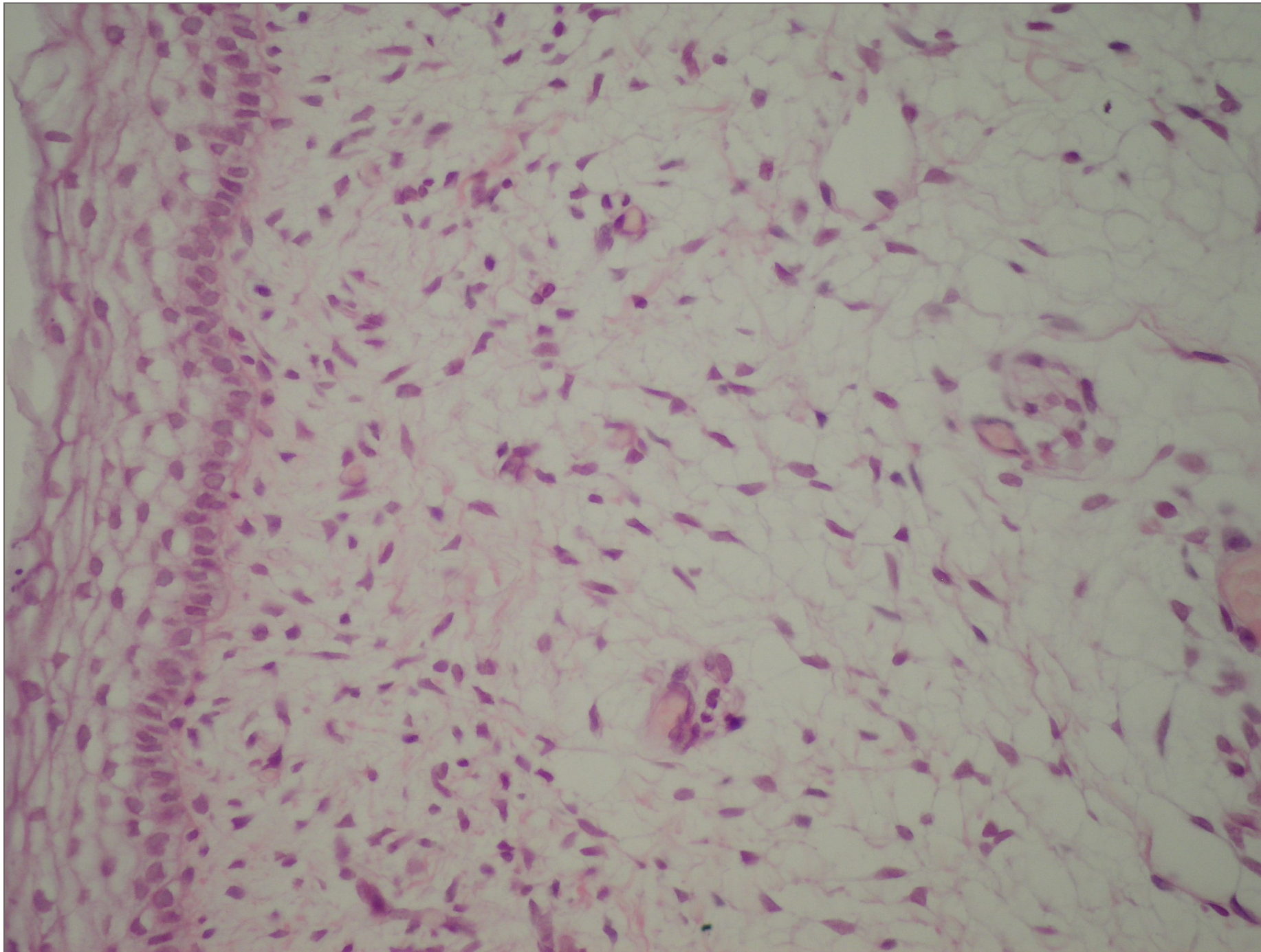


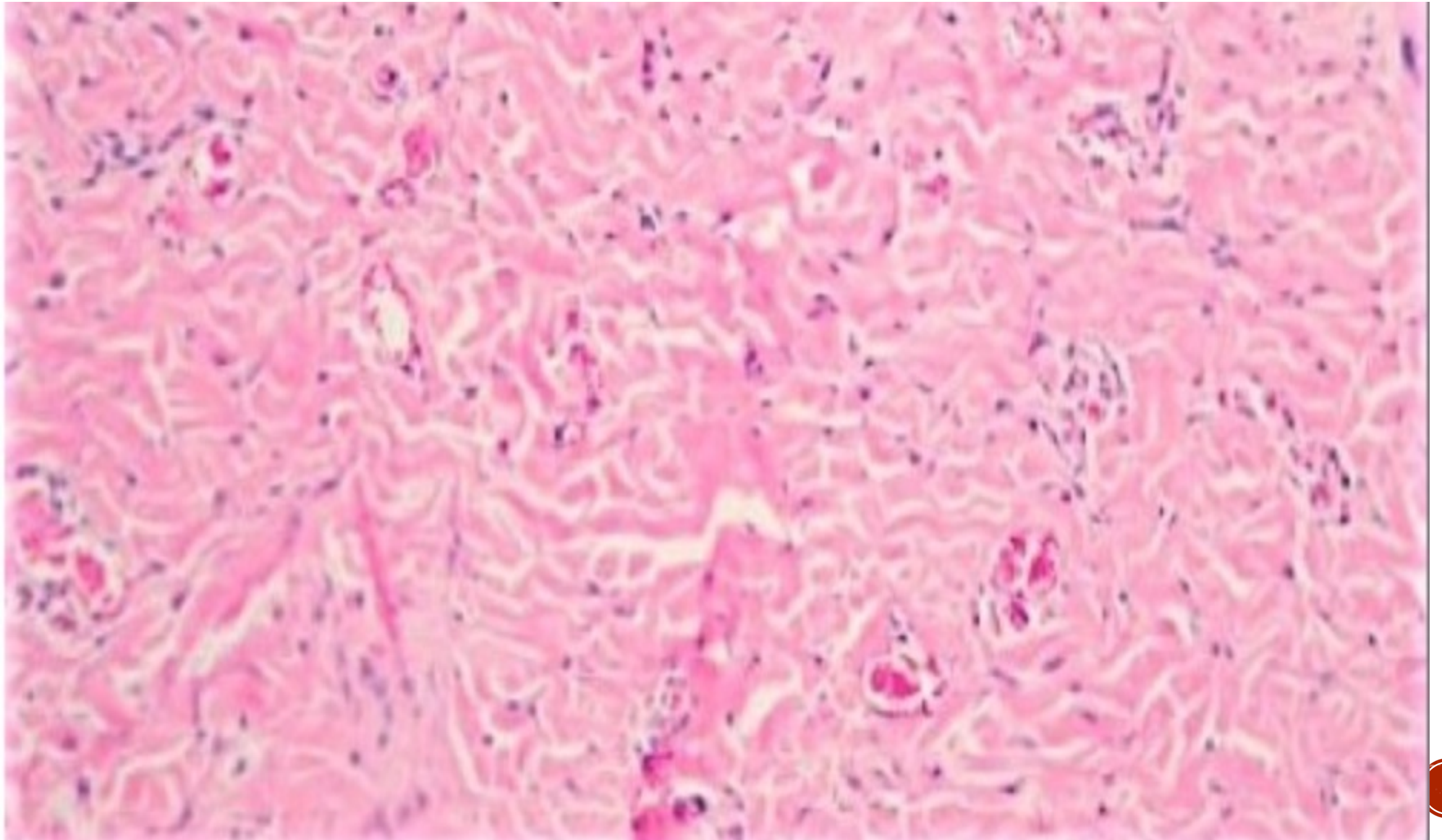
GOMORI'S ONE STEP TRI CHROME STAIN

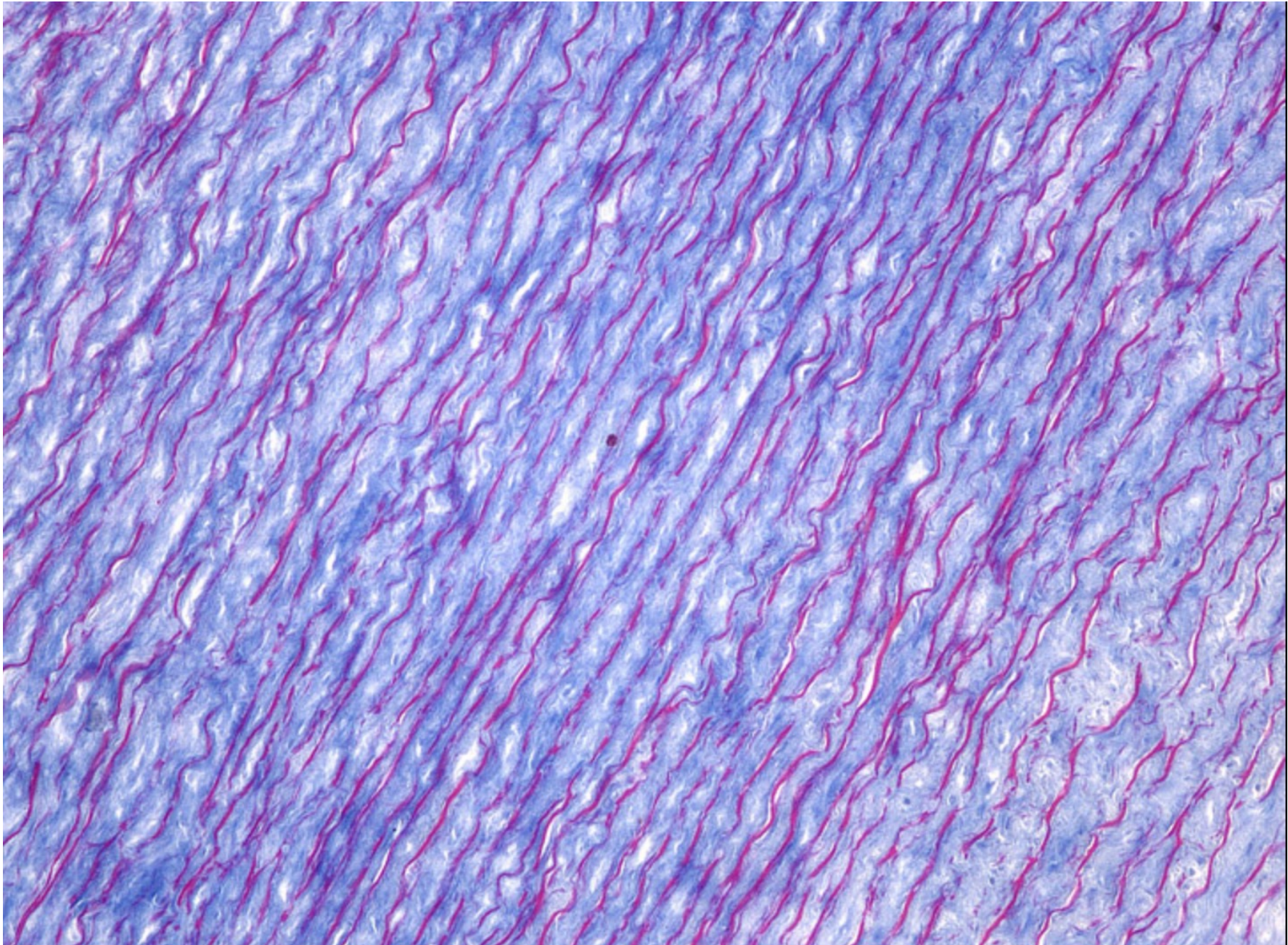


VERHOEFF-VAN GIESON

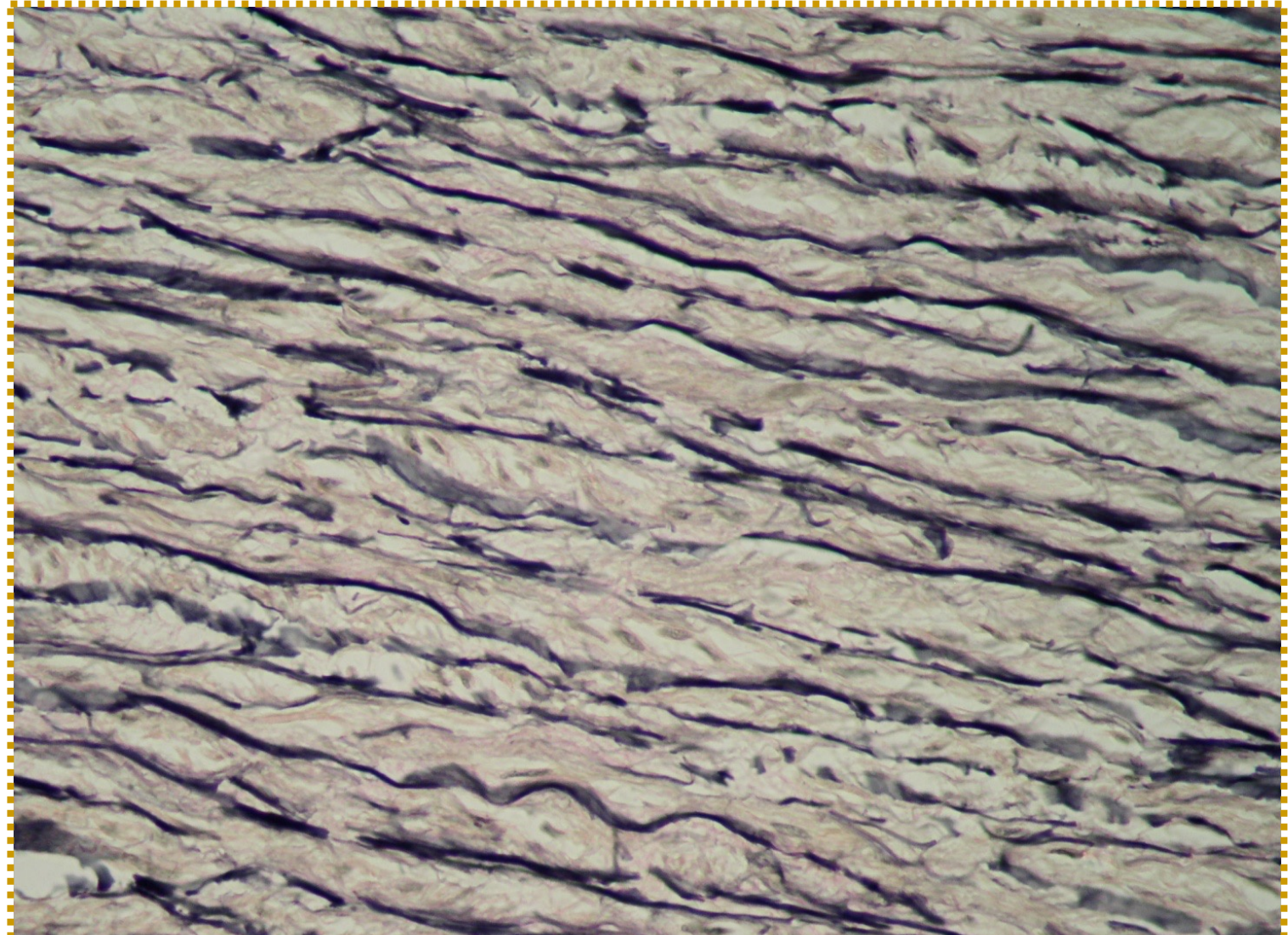
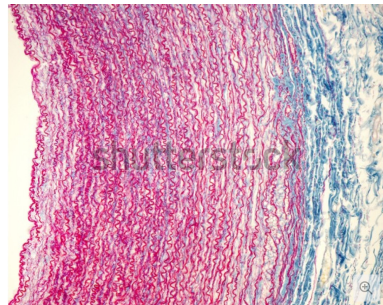




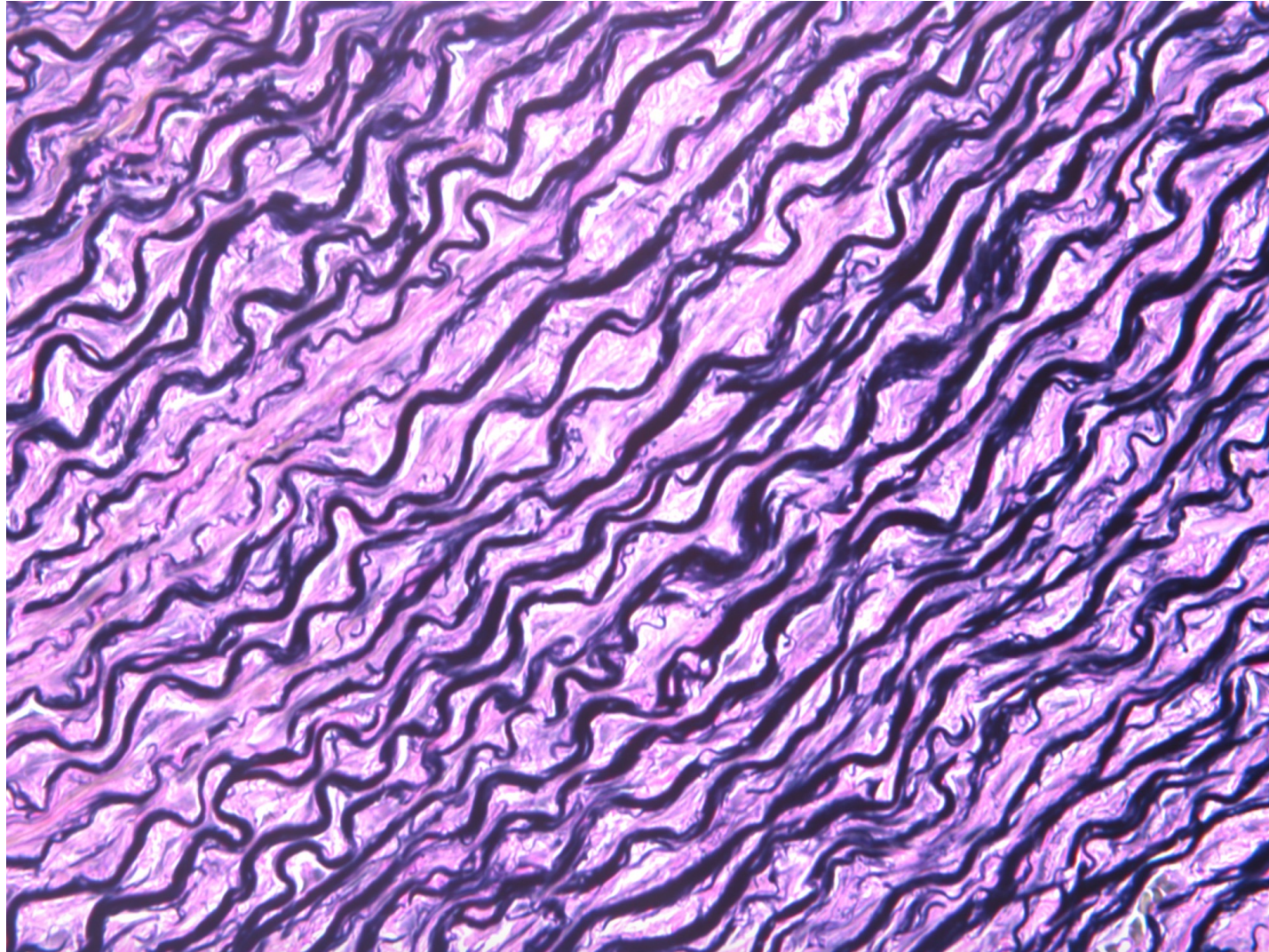




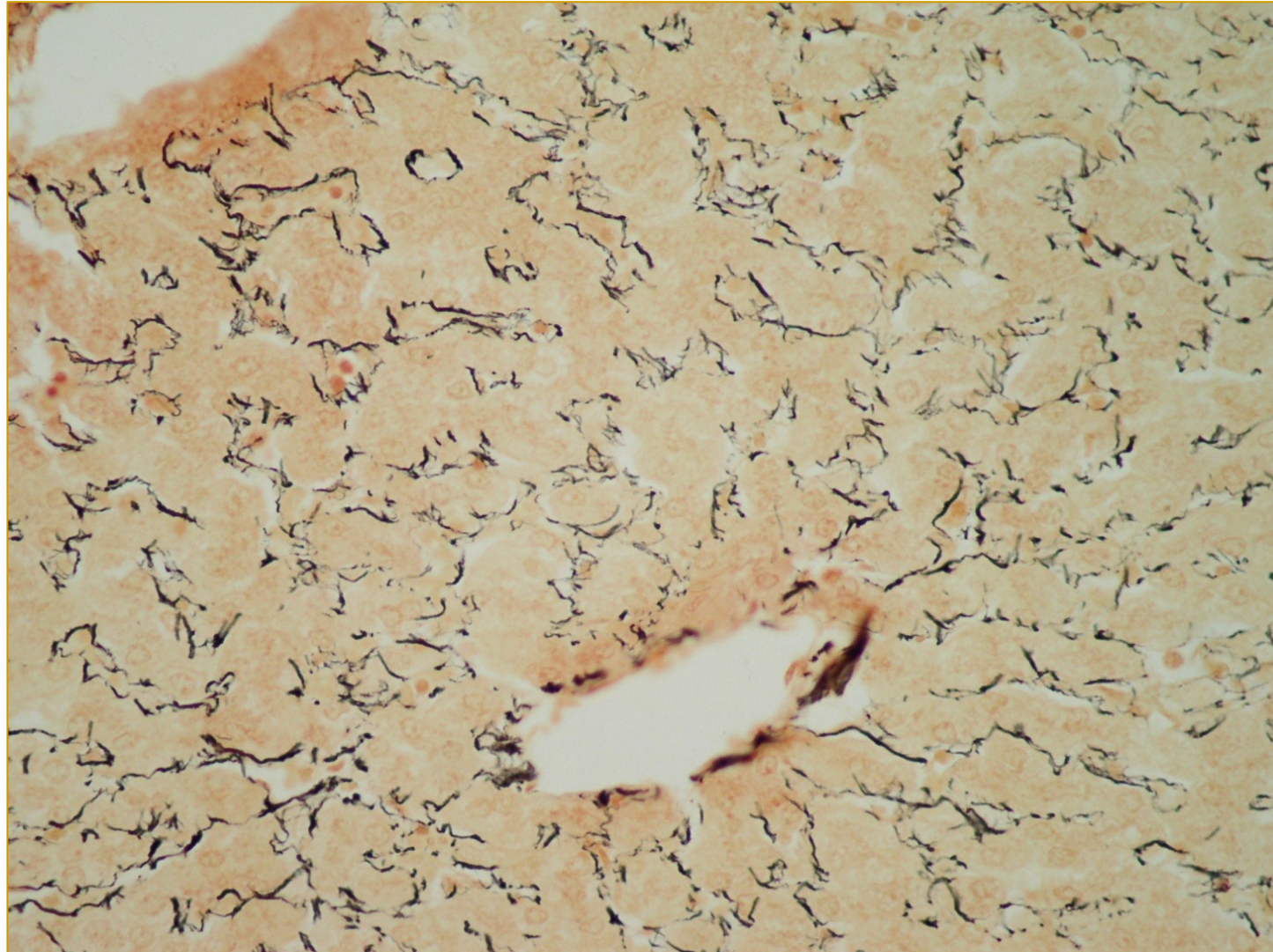
ELASTIC FIBERS-ORSCEIN



ELASTIC- VERHOEFF VAN GIESON



RETICULAR-LIVER



RETICULAR

