

TEST BANK

Cell injury 1

1. In relation to hypertrophy, which of the following statements is CORRECT?

- a) it is triggered by hormonal stimulation .
- b) it increases the function of an organ exponentially
- c) it is usually pathological
- d) it occurs after partial hepatectomy.

2. In which of the following situations is epithelial metaplasia most likely to have occurred:

- a) tanning of the skin following sunlight exposure
- b) lactation following pregnancy
- c) vitamin A deficiency
- d) acute myocardial infarction

3. Which of the following is caused by an enlarged prostate?

- a) Atrophy
- b) Hyperplasia
- c) Hypertrophy
- d) Metaplasia

4. The presence of squamous epithelium in the lower trachea of a 42-year-old female with a history of smoking is called:

- a) dysplasia
- b) anaplasia
- c) hyperplasia
- d) metaplasia

5. ONE of the following changes is associated with cellular hypertrophy?

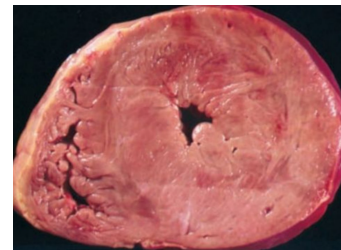
- a) Protein degradation.
- b) Increased protein synthesis.
- c) Autophagy.
- d) Decreased protein synthesis.

6. Which of the following is a typical example of adaptive physiological atrophy?

- a) Uterine smooth muscle changes in pregnancy.
- b) Skeletal muscle changes in athletes.
- c) Endometrial changes after menopause.
- d) Breast lobules changes during lactation.

7. The illustration shows a section of the heart from a 45-year-old African-American man with long-standing hypertension who died of a "stroke." Which of the following adaptive changes is exemplified in the illustration?

- a) Atrophy
- b) Hyperplasia
- c) Hypertrophy
- d) Hypoplasia



8. A 45-year-old woman is investigated for hypertension and is found to have enlargement of the left kidney. The right kidney is smaller than normal. Contrast studies reveal stenosis of the right renal artery. The size change in the right kidney is an example of which of the following adaptive changes?

- a) Aplasia
- b) Atrophy
- c) Hyperplasia
- d) Hypertrophy

9. A 75-year-old woman with Alzheimer disease dies of congestive heart failure. The brain at autopsy is shown in the image. This patient's brain exemplifies which of the following responses to chronic injury?

- a) Atrophy
- b) Dysplasia
- c) Hyperplasia
- d) Hypertrophy



10. Autoimmune disorders causing damage to body tissues fall under:

- a) Chemical Agents
- b) Infectious Agents
- c) Immunologic Reactions
- d) Physical Agents

1.A	2.C	3.B	4.D	5.B
6.C	7.C	8.B	9.A	10.C