

Anatomy images for MSS
practical exam- 2024



Identify the followings:

Frontal bone

Nasal bone

Maxilla

Zygomatic bone

Mandible

Supraorbital foramen

Infraorbital foramen

Mental foramen

Superciliary arches

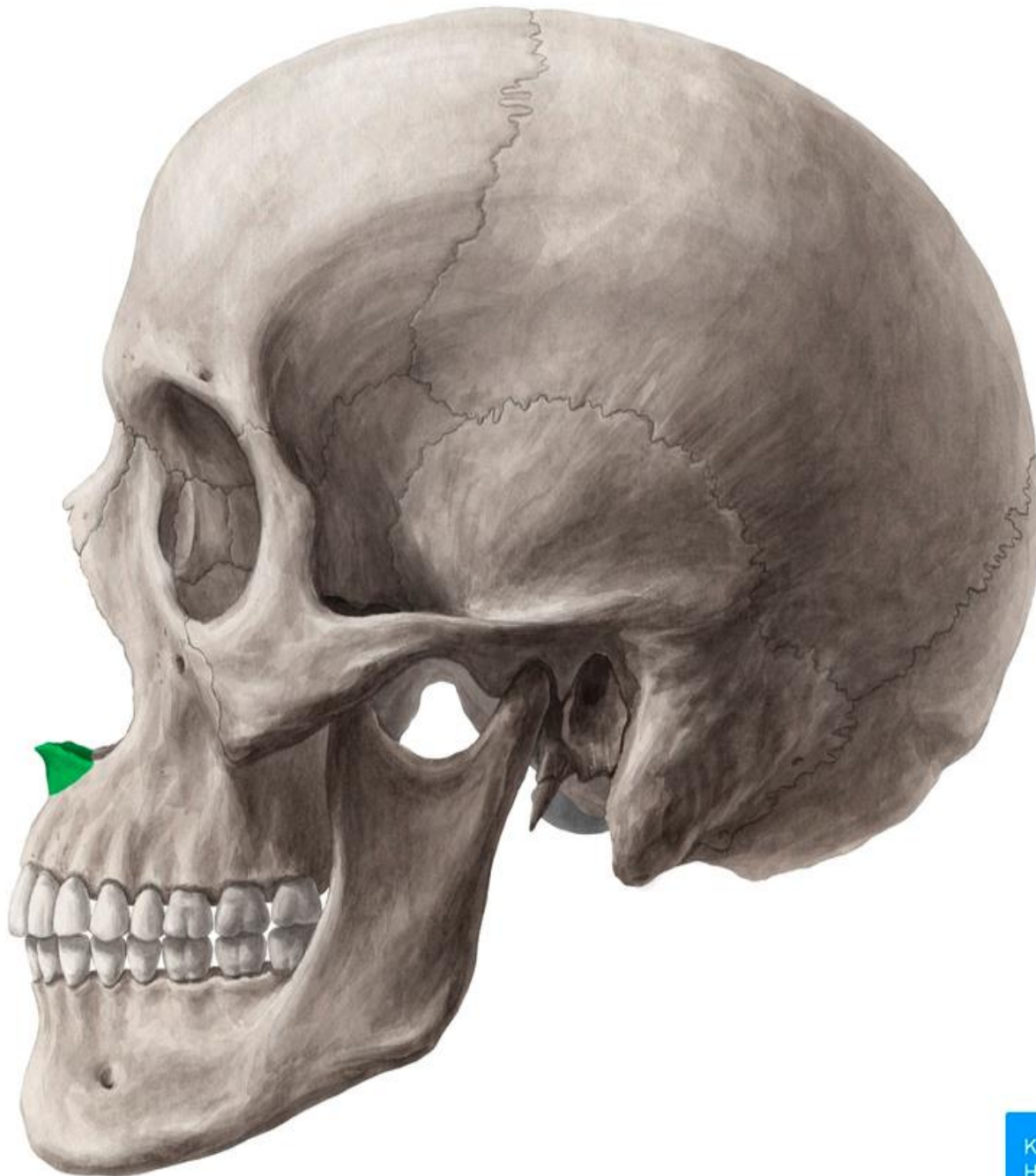
Glabella

Nasion

Anterior nasal spine

Vomer

Ethmoid



Identify the followings:

Frontal bone

Nasal bone

Maxilla

Zygomatic bone

Mandible

Parietal bone

Occipital bone

Temporal bone

Sphenoid bone
(greater wing)

Zygomatofacial foramen

External auditory meatus

Mastoid process

Styloid process

Pterion

1- Frontal

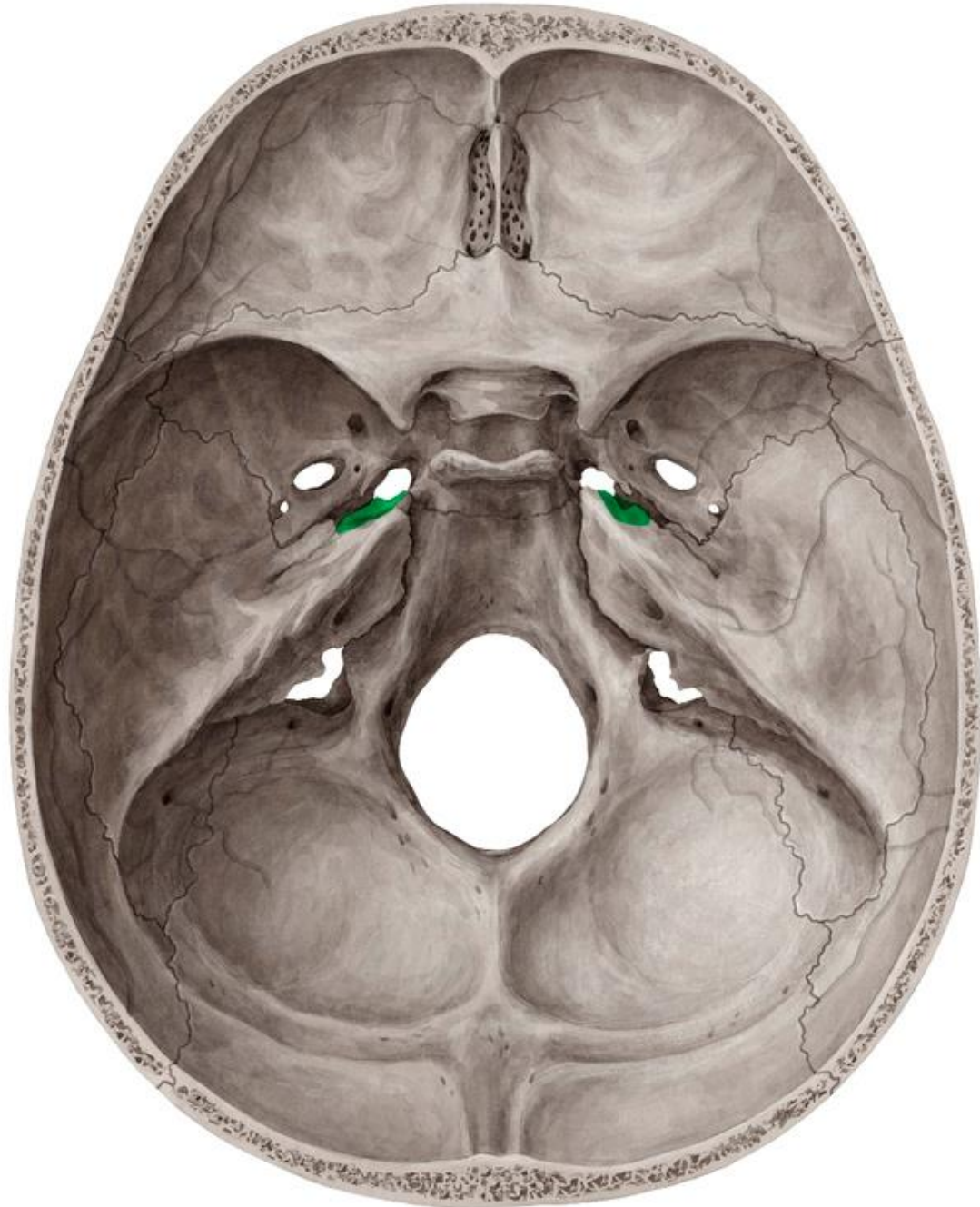
2- Parietal

3-Squamous part of temporal
bone

4-Greater wing of sphenoid

Identify the followings:

- Cribriform plate of the ethmoid
- Frontal crest
- Crista galli
- Lesser wing of sphenoid
- Anterior clinoid process
- Body of sphenoid
- Foramen magnum
- Greater wing of the sphenoid
- Petrous part of the temporal bone
- Posterior clinoid process
- Optic canal
- Foramen rotundum
- Foramen ovale
- Foramen spinosum
- Foramen lacerum
- Carotid canal
- Jugular foramen
- Hypoglossal canal
- Internal acoustic meatus
- Internal occipital crest
- Internal occipital protuberance



Foramina for cranial nerves

Olfactory nerves: Cribriform plate of the ethmoid

Optic nerve: Optic canal

Oculomotor nerve

Trochlear nerve

Abducent nerve

} Superior orbital fissure

Trigeminal nerve

Ophthalmic nerve (branches): Superior orbital fissure

Maxillary nerve: Foramen rotundum

Mandibular nerve: Foramen ovale

Facial nerve: Internal acoustic meatus, stylomastoid foramen

Vestibulocochlear nerve: Internal acoustic meatus

Glossopharyngeal nerve

Vagus nerve

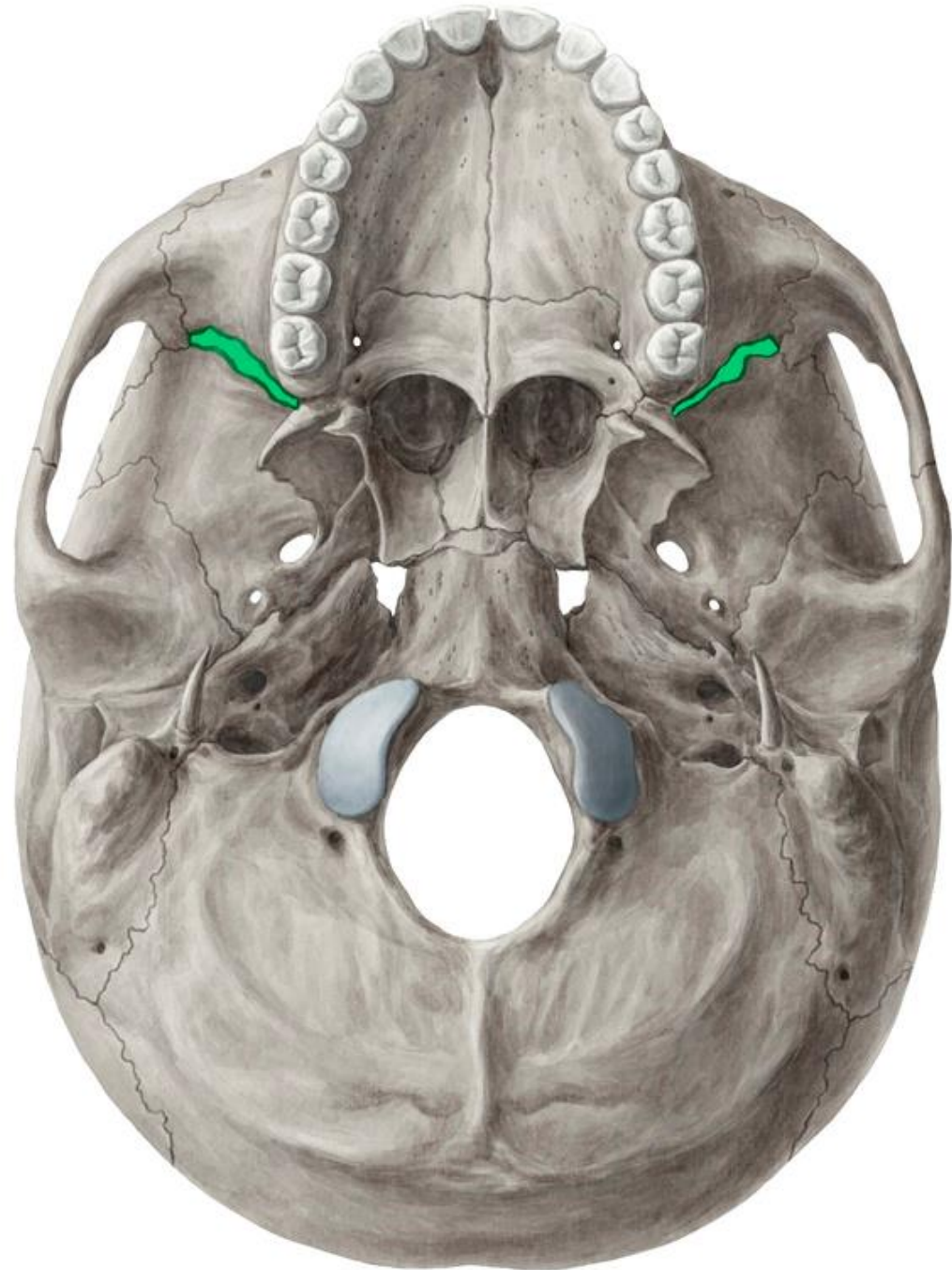
Accessory nerve

} Jugular foramen

Hypoglossal canal: Hypoglossal nerve

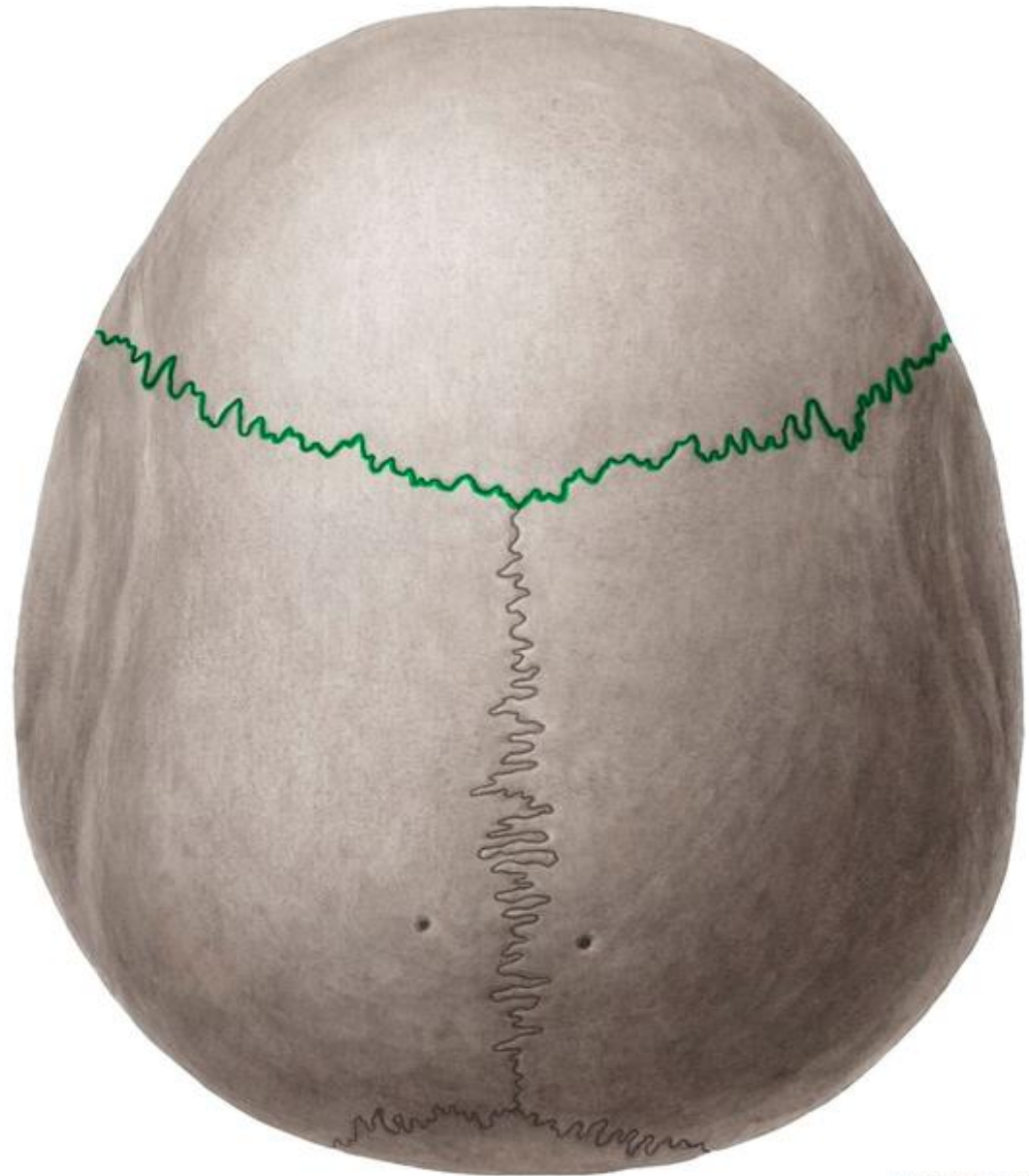
Identify the followings:

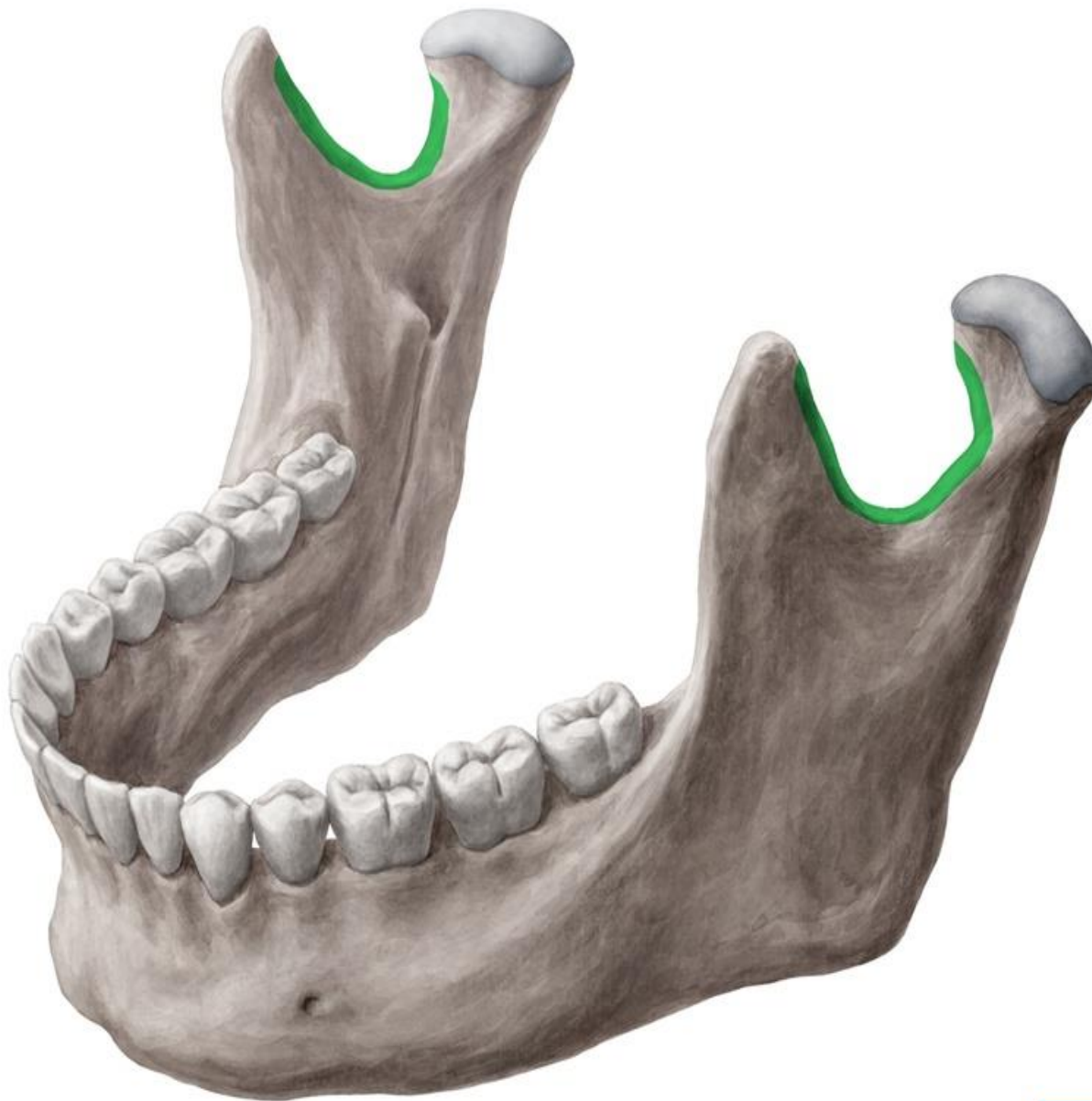
- Foramen magnum
- External occipital crest
- External occipital protuberance
- Inferior nuchal line
- Superior nuchal line
- Foramen ovale
- Foramen spinosum
- Foramen lacerum
- Opening for carotid canal
- Jugular foramen
- Hypoglossal canal
- Mastoid process
- Styloid process
- Stylomastoid foramen
- Occipital condyles



Identify the followings:

- Coronal suture
- Sagittal suture
- Lambdoid suture
- Bregma
- Lambda





Identify the followings:

Body

Ramus

Angle

Condylar process (head and neck)

Coronoid process

Mandibular notch

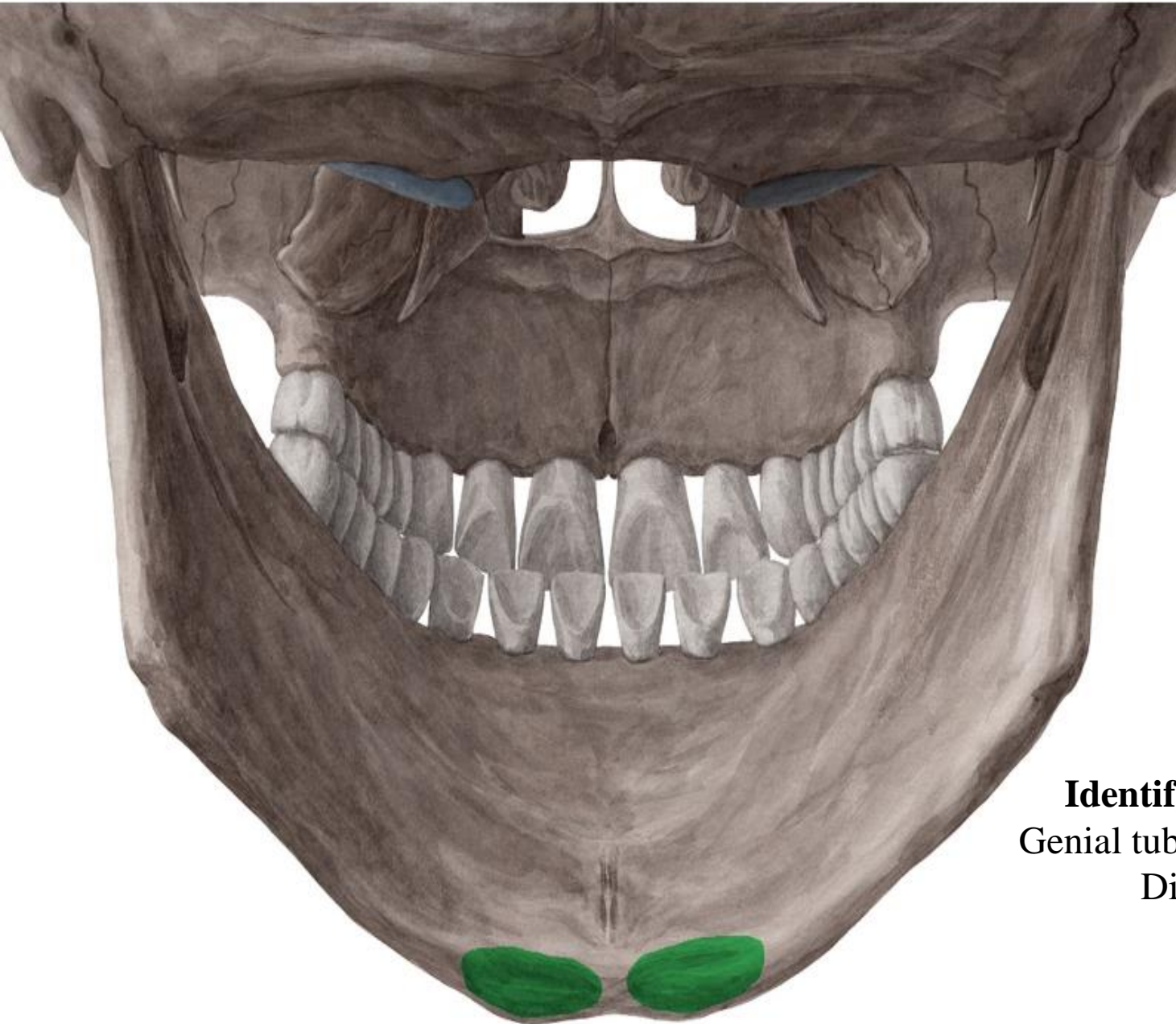
Mandibular foramen

Mental foramen

Mental protuberance

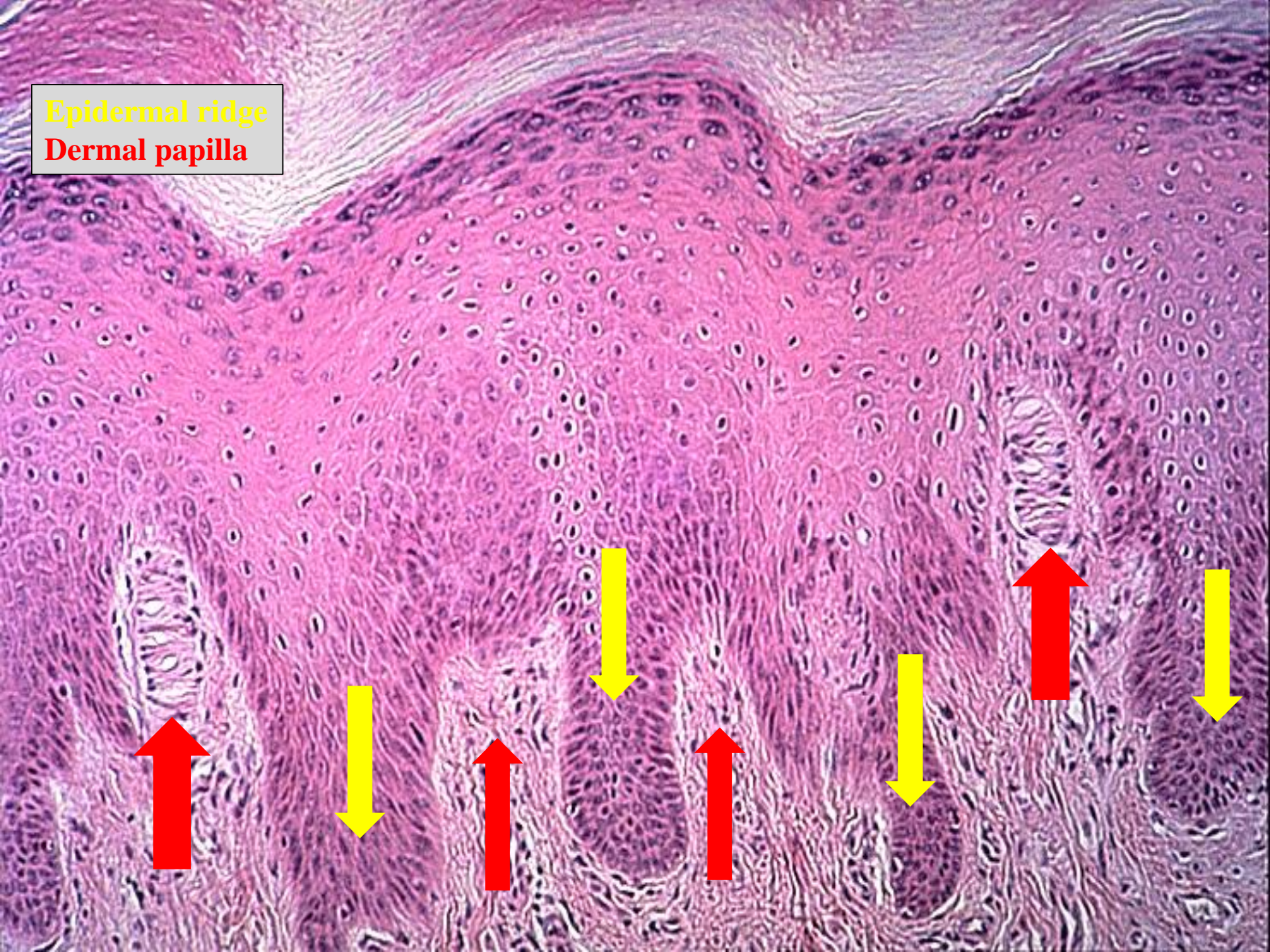
Mylohyoid groove

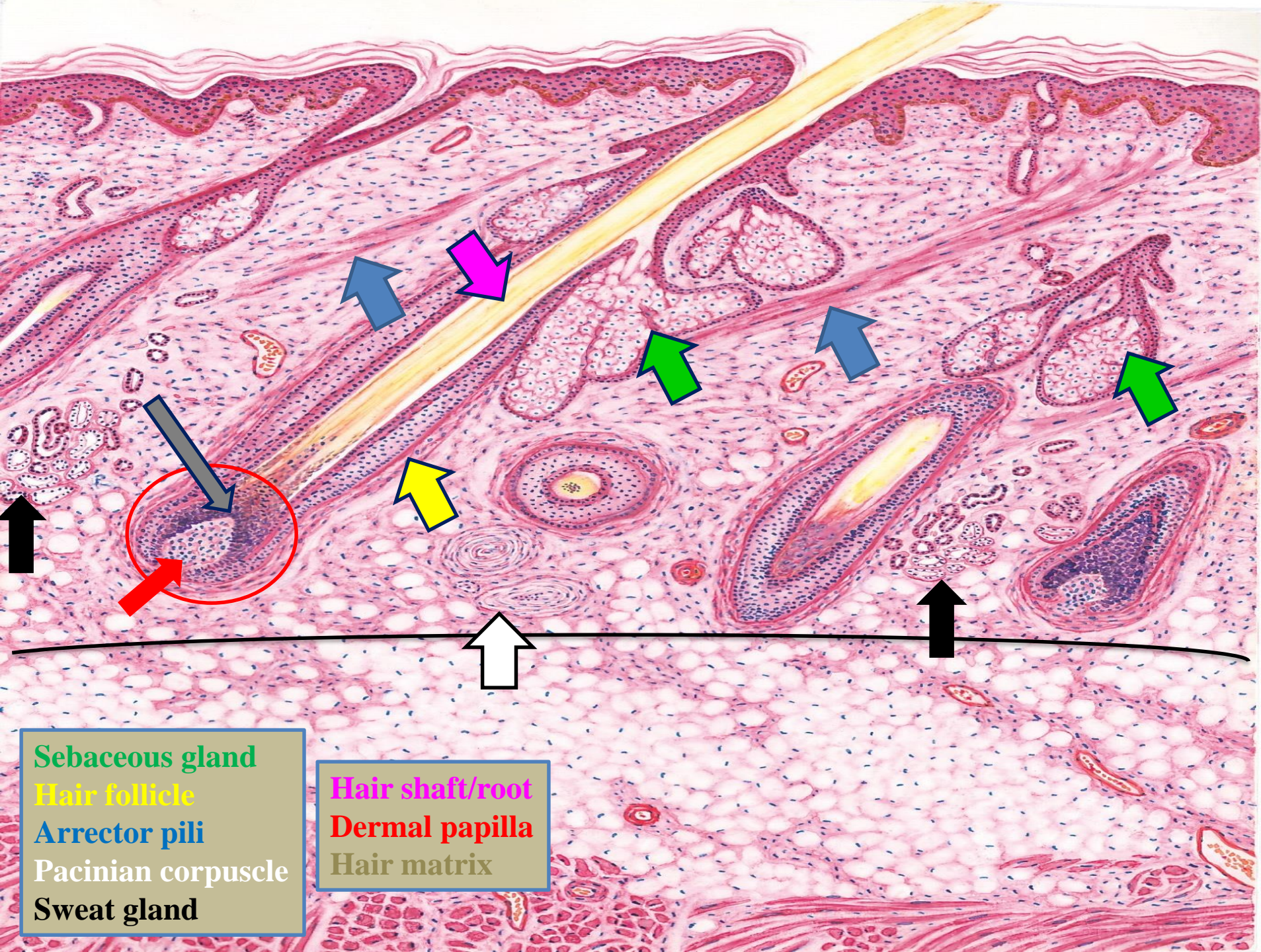
Mylohyoid line



Identify the followings:
Genial tubercle (Mental spine)
Digastric fossa

Epidermal ridge
Dermal papilla

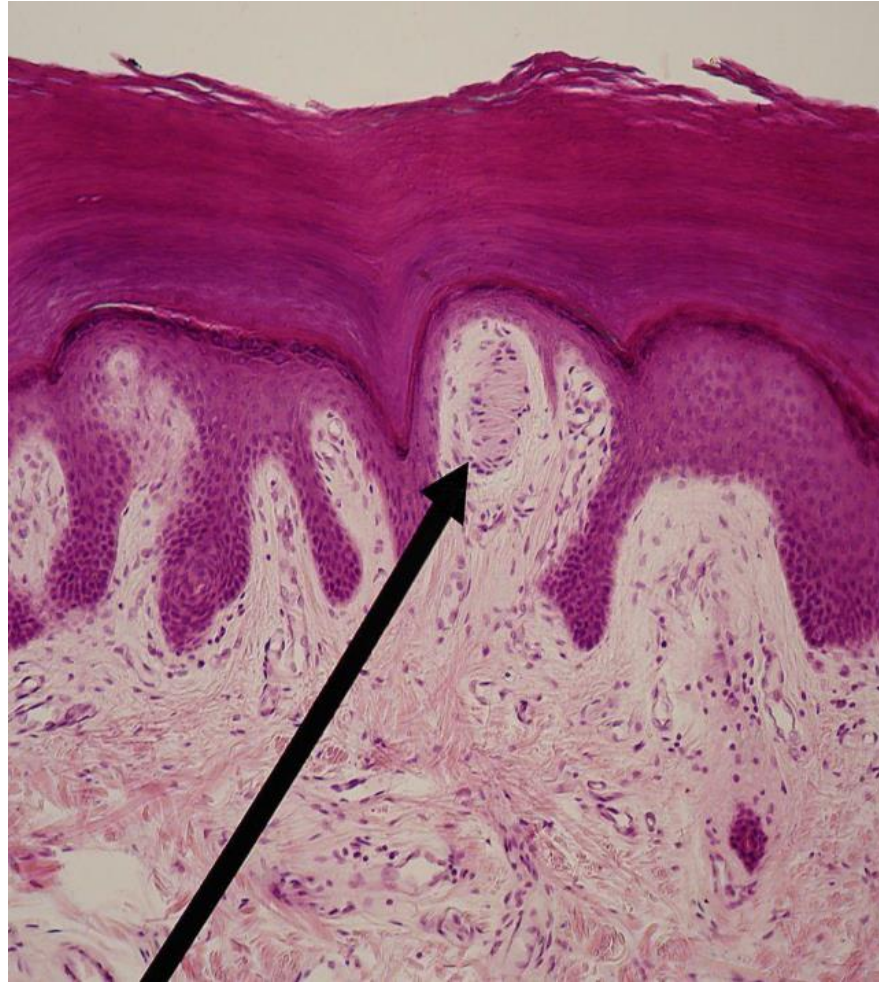




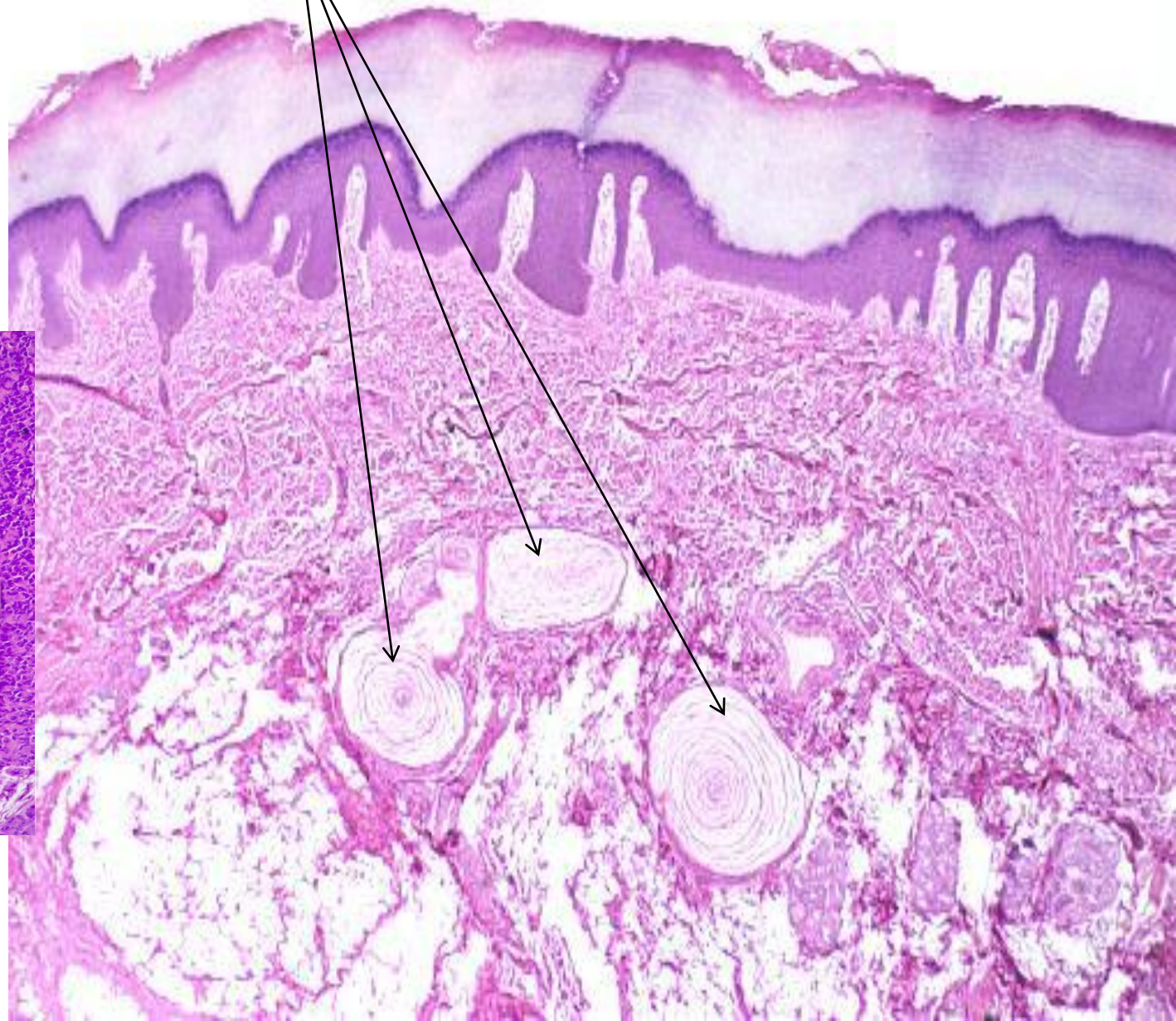
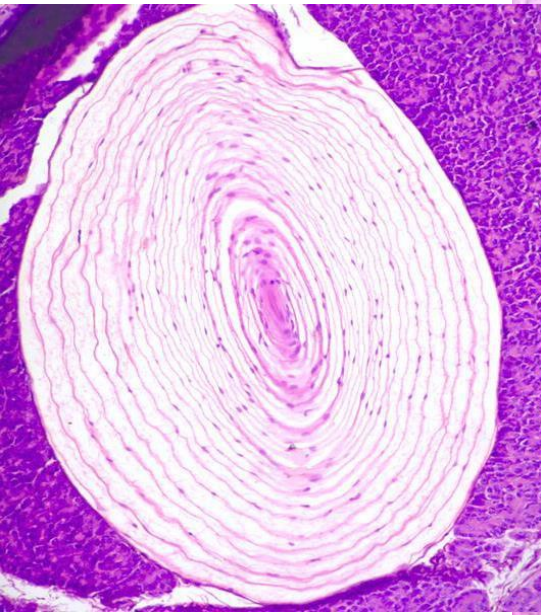
Sebaceous gland
Hair follicle
Arrector pili
Pacinian corpuscle
Sweat gland

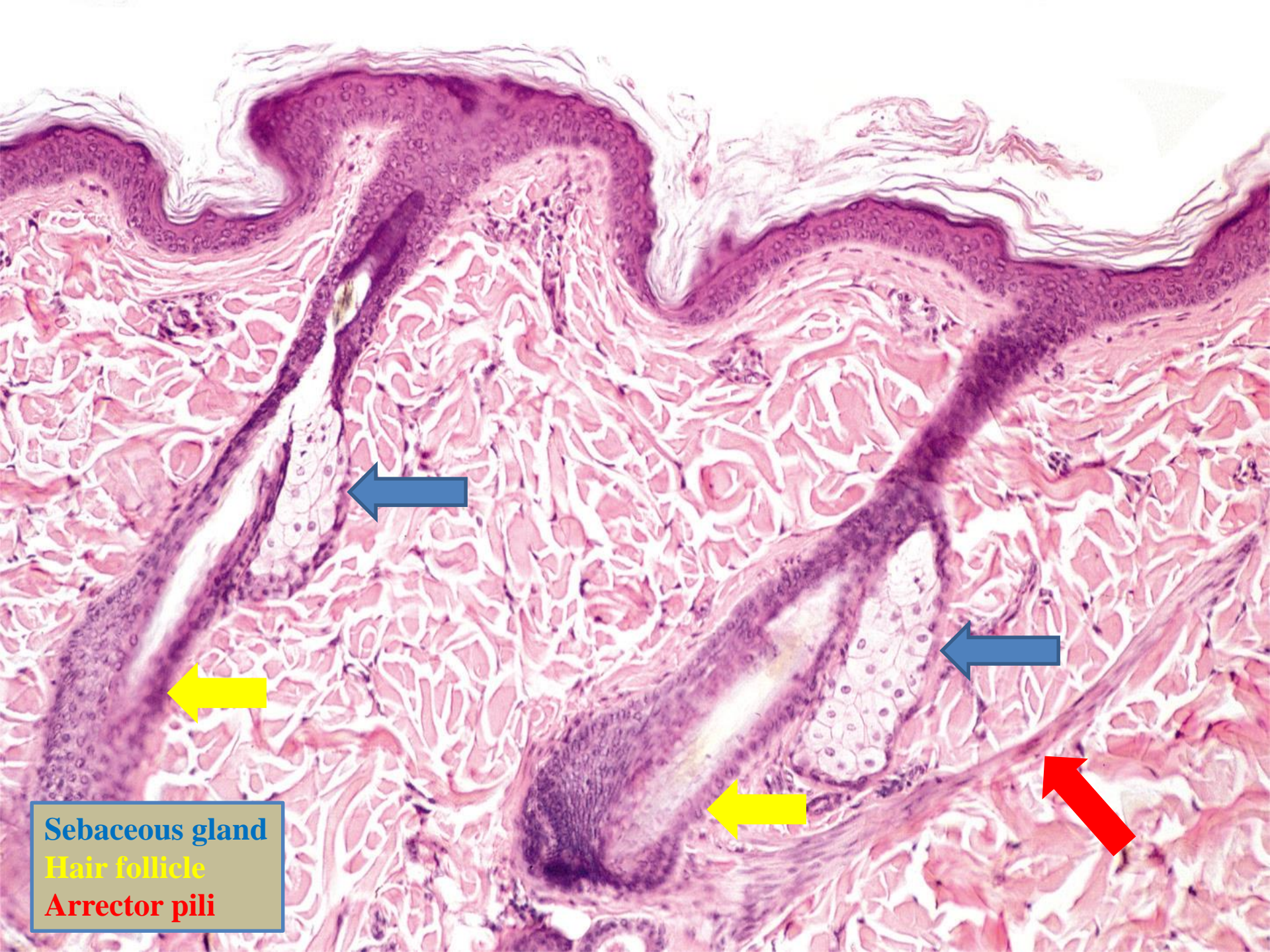
Hair shaft/root
Dermal papilla
Hair matrix

Meissner corpuscle



Pacinian corpuscles





Sebaceous gland
Hair follicle
Arrector pili



THICK OR THIN SKIN ????

