



MSS

MIDTERM

Test bank (022)

Answers are on the last page.

1. The wrong statement about the cells of epidermidis?
 - A. melanocyte is found in starum sponiosum
 - B. langherhans cells' embryonic origin is monocytes
 - C. keratinocytes are the most abundant
 - D. merkel cells are mostly found in fingertips

2. If the cornea is adducted and the person moves the cornea upwards, which muscle is the most effective at moving the eyeball upwards?
 - A. superior rectus
 - B. inferior rectus
 - C. superior oblique
 - D. inferior oblique

3. Where is the most common site of osteosarcoma
 - A. medulla in metaphysis of proximal tibia
 - B. medulla in the epiphysis of the distal femur
 - C. medulla of phalanges
 - D. cortical bone

4. Horners syndrome affected ganglion?
 - A. otic
 - B. ciliary
 - C. superior cervical
 - D. submandibular

5. Which of the following is the least affected by osteogenesis imperfecta:

- A. teeth
- B. bone
- C. Skin
- D. heart
- E. sclera

6. You are a resident doctor and a patient comes to you complaining that he can't close his eye, while testing his cranial nerves function, his face was pulled to the right. Which of the following is the affected cranial nerve?

- A. left facial nerve
- B. optic nerve
- C. maxillary and ophthalmic division of trigeminal nerve
- D. right facial nerve
- E. vagus nerve

7. Which pair Mismatched

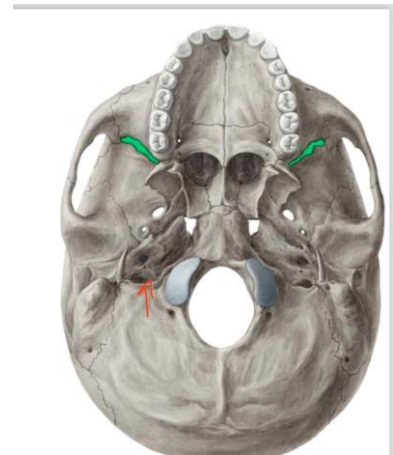
- A. Slow fibers -- high blood supply
- B. Slow fibers -- small nerve fibers
- C. Fast fibers -- high sarcoplasmic reticulum
- D. Fast fibers -- low ATPase activity
- E. Fast fibers -- low myoglobin

8. A 2-years old boy is diagnosed with fever , conjunctivitis and non- productive cough. After looking at his mouth we saw a blue-gray macules on an erythematous base on the buccal mucosa . A morbilliform rash appeared at his hairline spreading to the trunk and extremities, what is the expected disease he have ?
- A. Enteroviral rashes
 - B. Measles
 - C. Rubella
 - D. Fifth disease
 - E. Sixth disease
9. Imagine that you are in the emergency room and suddenly a patient come with car accident, you notice that his face is pulled to the right , which of these nevers could be injured ?
- A. mandibular branch of trigeminal nerve
 - B. right facial nerve
 - C. left facial nerve
 - D. ophthalmic nerve
10. The result that support sliding filaments more than other theories is :
- A. I band shorten
 - B. A band stay the same during contraction
 - C. z discs will come closer to each other during contraction
 - D. H zones will disappear at the maximum contraction

11. The constriction of eye pupil is due to lack of innervation of ___ ganglion:
- A. Ciliary
 - B. Pterygopalatine
 - C. Otic
 - D. superior cervical
 - E. Submandibular

12. All of these pass through this structure except:

- A. Sigmoid sinus
- B. Vagus nerve
- C. glossopharyngeal nerve
- D. Hypoglossyl nerve



13. If there is a bleeding beneath pericranium which is correct about it:

- A. There will be fluid accumulation
- B. Head takes the shape of the related bone
- C. Racoon eyes
- D. Osteomyelitis

14. Keeping food between teeth and cheek is done by :

- A. Orbicularis oris
- B. Buccinator
- C. Orbicularis oculi
- D. Sphenomandibular joint

15. Which of the following can be treated by antibiotics?
- A. millibriform rash
 - B. pastia line
 - C. unmerged rash
16. A patient that miss all his childhood vaccines had coryza, conjunctivitis and cough and fever, and had a rash the began at the level of hairline and spread toward the extremities, when we examined his oral mucosa we found gray macules on his buccal surface, what is the etiology of his condition.
- A. 6th disease
 - B. Measles
 - C. Roseala infantum
 - D. German measles
17. Which of the following conditions are caused by an ectoparasite that can live in any climate and humidity and is characterised by inflammatory nodules and itching.
- A. scabies
 - B. Mononucleosm
 - C. Secondary syphilis
 - D. Rocket fever syndrome

18. A patient lost sensations over the angle of the mandible, the affected nerve may be:
- A. ophthalmic
 - B. auriculotemporal
 - C. mandibular
 - D. great auricular
 - E. zygomaticofacial
19. A disease that is characterised by decreased osteoclastic activity.
- A. flask shape deformity
 - B. Osteoperosis
 - C. Osteogenesis imperfecta
20. What is true about thick skin:
- A. Prominent stratum corneum
 - B. Presence of hair follicles
 - C. There are no sebaceous glands, but there is apocrine salivary glands
 - D. Most dominant over the body
21. If we have a mutation in which of the following genes, we will have a tumor that can synthesize cartilage.
- A. IDH2
 - B. Mdm2
 - C. Cdk4
 - D. Retinoblastoma

22. A craniothabes indicates which of the following conditions:

- A. rickets
- B. Pagets
- C. Osteogenesis imperfecta
- D. Hyperparathyroidism

23. The involucrum is associated with:

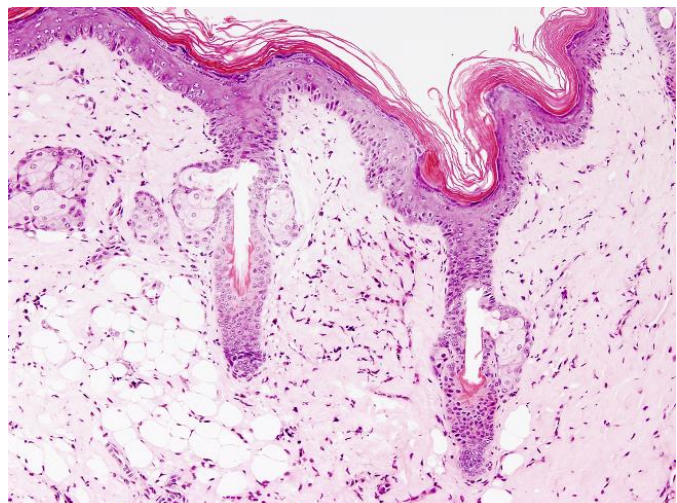
- A. subchondral necrosis
- B. Sequestrum
- C. Osteoblastoma

24. The outer to inner correct order of epidermal thin skin is:

- A. Corneum-lucidum- granulosum - spinosum - basale
- B. Corneum- granulosum - spinosum – basale
- C. Corneum- spinosum- granulosum -- basale
- D. spinosum - basale Corneum- granulosum

25. All of the following are seen in this section except:

- A. Sebaceous gland
- B. Arrector pili
- C. Stratum lucidum



26. Which drug is used to reduce the craving of alcohol and acts on GABA b receptors:

- A. baclofen
- B. Tizanidine
- C. Dantrolene
- D. Metronidazole

27. The part of frontal that form the floor of anterior cranial fossa is:

- A. Squamus
- B. Maxillary process
- C. Zygomatic process
- D. Nasal
- E. Orbital plates

28. Which topical antibiotic drug is used to treat rosacea.

- A. Metronidazole
- B. Neomycin & benzoyl peroxide
- C. Erythromycin & benzoyl peroxide
- D. salicylic acid

29. Which of the following is wrong about tizanidine?

- A. It can decrease blood pressure
- B. it can increase heart rate
- C. Inhibits norepinephrine
- D. Alpha 2 agonist

30. All of the following are true surfaces of attach for falx cerebri Except:

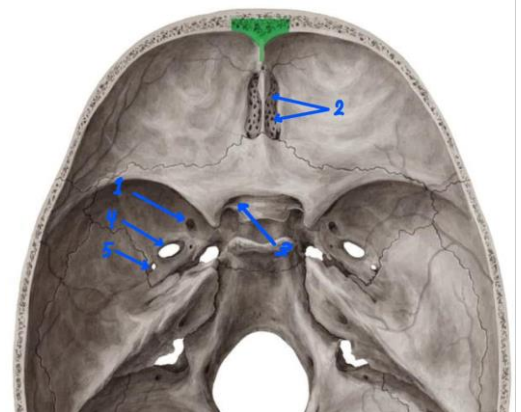
- A. Anterior clinoid processes
- B. Crista gali
- C. Ciribriform plate
- D. Internal occipital protuberance

31. The structure that pass Through tendenosis ring is:

- A. Ophthalmic artery
- B. Lateral rectus
- C. Superior olique
- D. Lacrimal nerve
- E. Trochlear nerve

32. which of the following is incorrect matching:-

- A. 2→ cribriform plate
- B. 5→ foramen caecum
- C. 3→ optic canal
- D. 1→ foramen rotundum
- E. 4→ foramen ovale



33. Which of the following is true about isotretinoin
- A. it's contraindicated in pregnancy
 - B. Topical treatment for inflammatory acne
 - C. Oral treatment for psoriasis
 - D. Safest treatment for acne

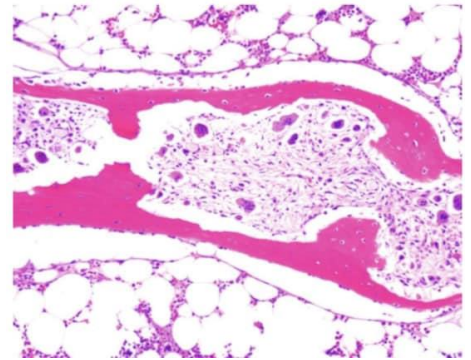
34. This marked point passes a structure that is related to :
- A. Mandibular nerve
 - B. Maxillary nerve
 - C. Ophthalmic artery
 - D. Superior orbital nerve



35. Which of the following is the mechanism of elfornithine:
- A. inhibition of polyamine synthesis
 - B. inhibition of tyrosine kinase
 - C. Activation of alpha 5 reductase
 - D. Inhibition of phosphodiesterase

36. All of the following related to this except:

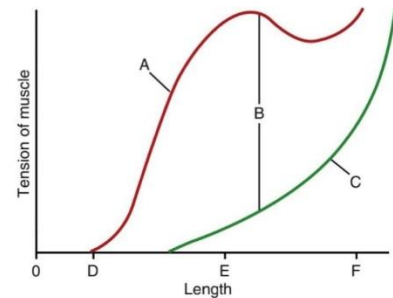
- A. Hypercalcemia & hyperphosphatemia
- B. Vit D deficiency
- C. Brown tumor
- D. Cystica fibrosa



37. Which of the following is a wrong statement about the diagram?

- A. A is total tension
- B. B is active tension
- C. C is passive tension
- D. This diagram shows length-tension relationship for a whole muscle
- E. Optimum length always gives maximum total tension

Questions 35–37



1	2	3	4	5	6	7	8	9	10
A	D	A	C	D	A	D	B	C	B

11	12	13	14	15	16	17	18	19	20
D	D	B	B	B	B	A	D	A	A

21	22	23	24	25	26	27	28	29	30
A	A	B	B	C	A	E	A	B	A

31	32	33	34	35	36	37
E	B	A	B	A	A	E