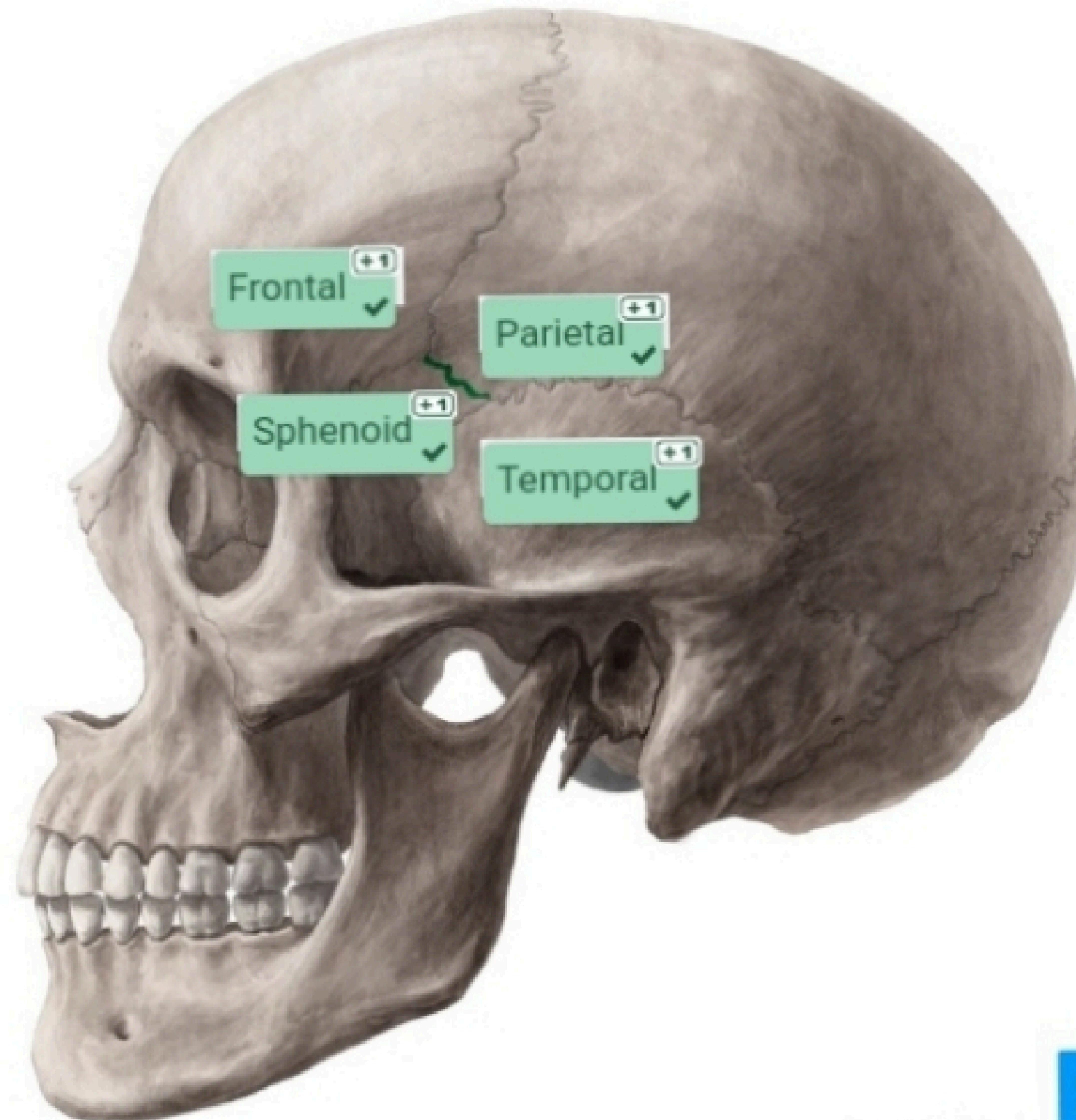
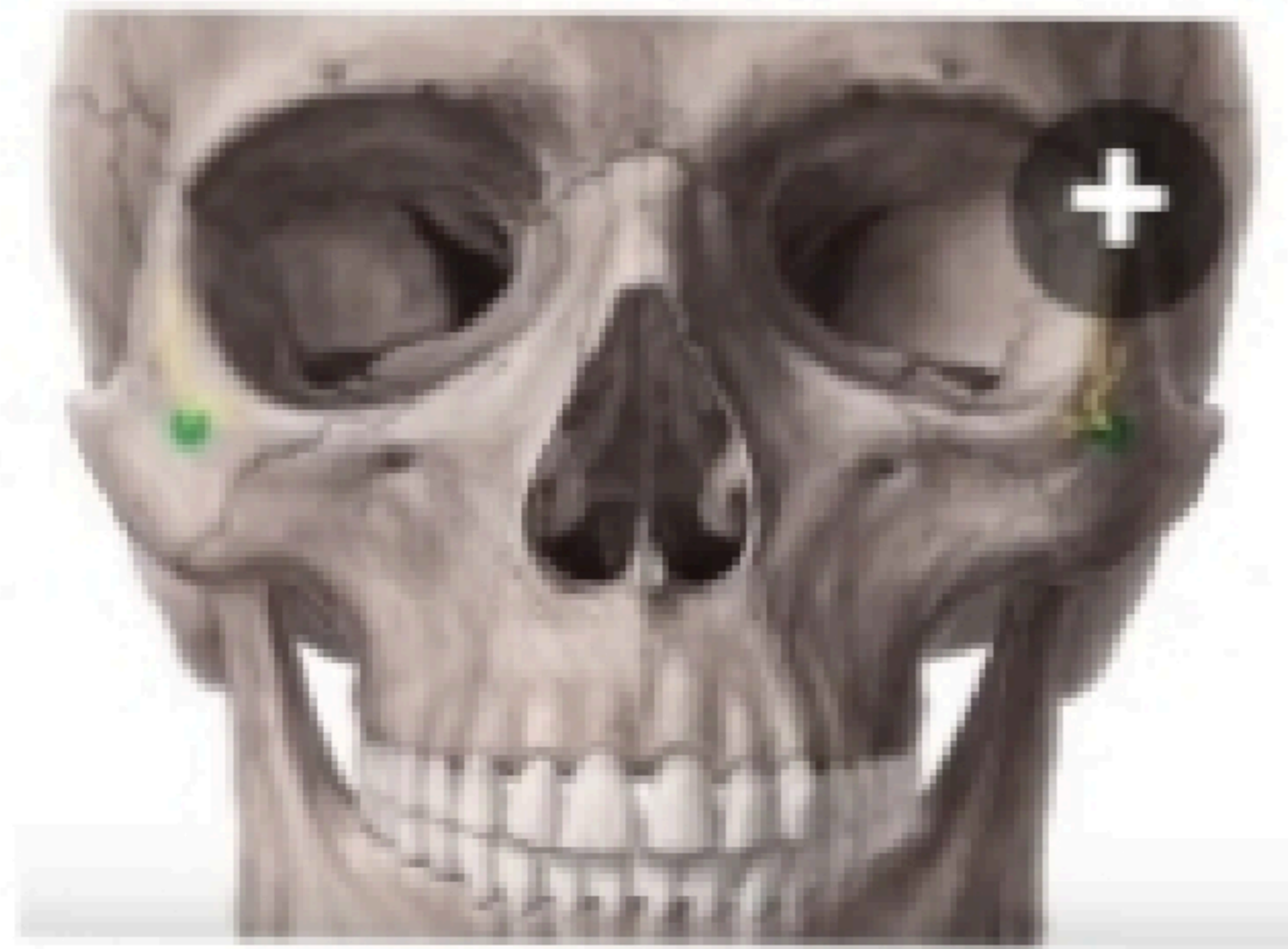


Drag and Drop the bones participating in the formation of the green highlighted area.



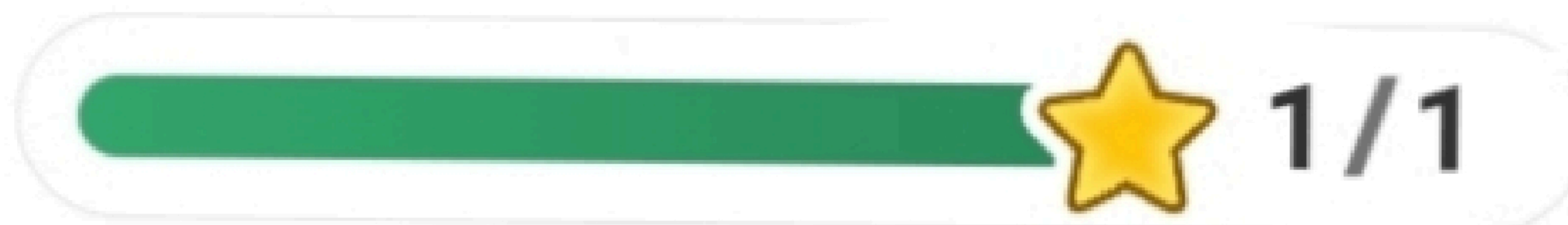


The nerve passing through the green highlighted foramen is zygomaticotemporal nerve.

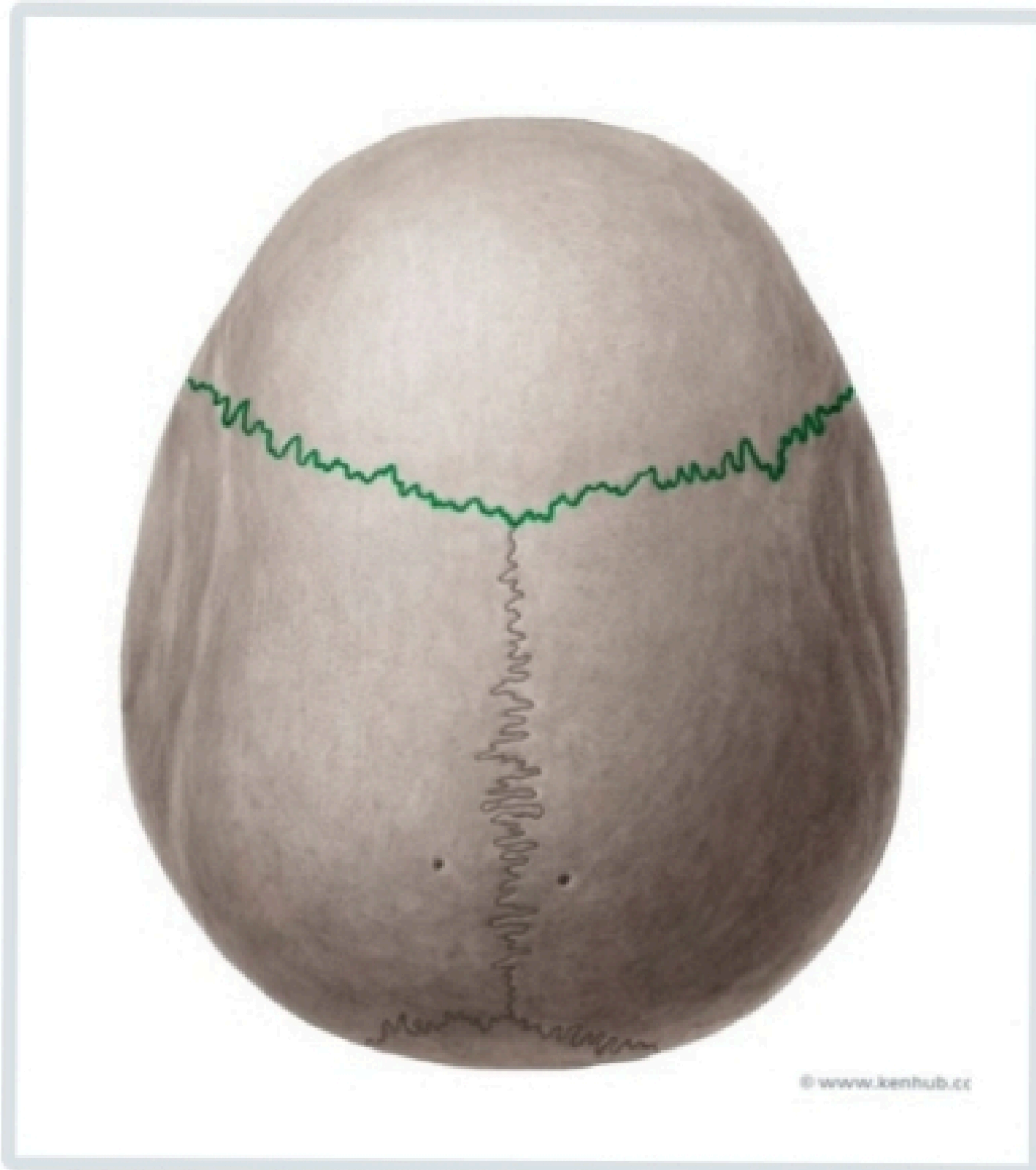
True

False ✓

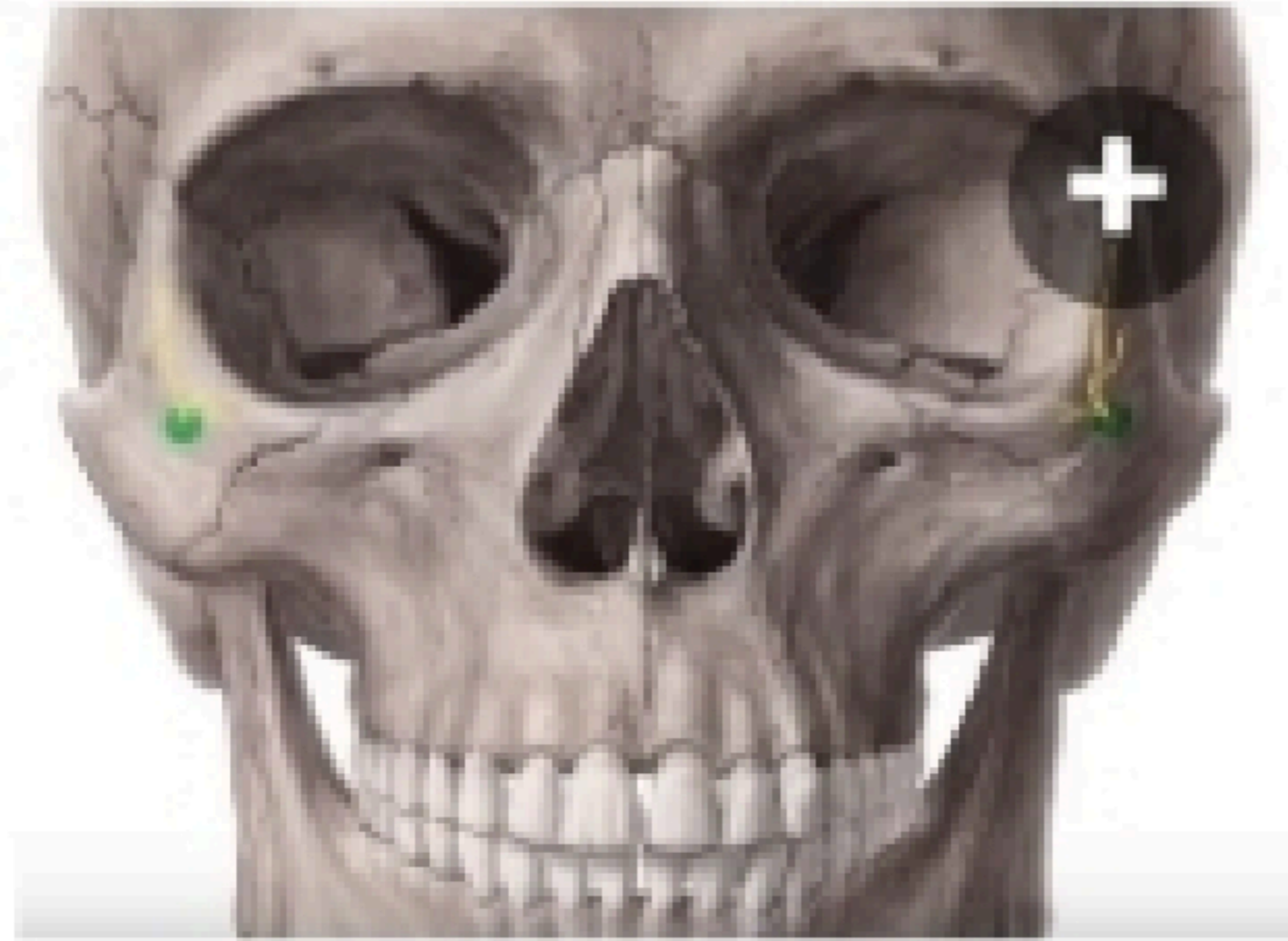
You got 1 of 1 points



Which of the following sutures runs between parietal and occipital bones?



[View my attempts](#)



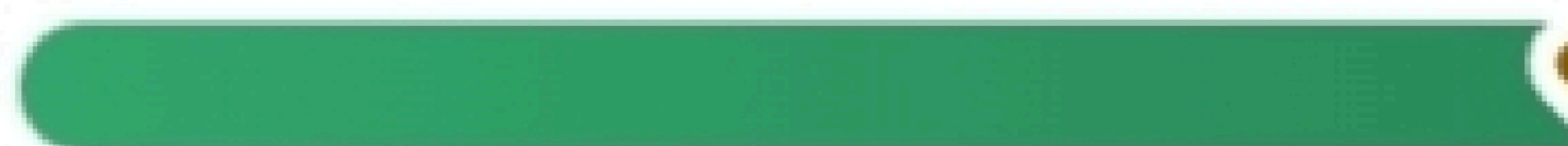
The nerve passing through the green highlighted foramen is zygomaticotemporal nerve.

True

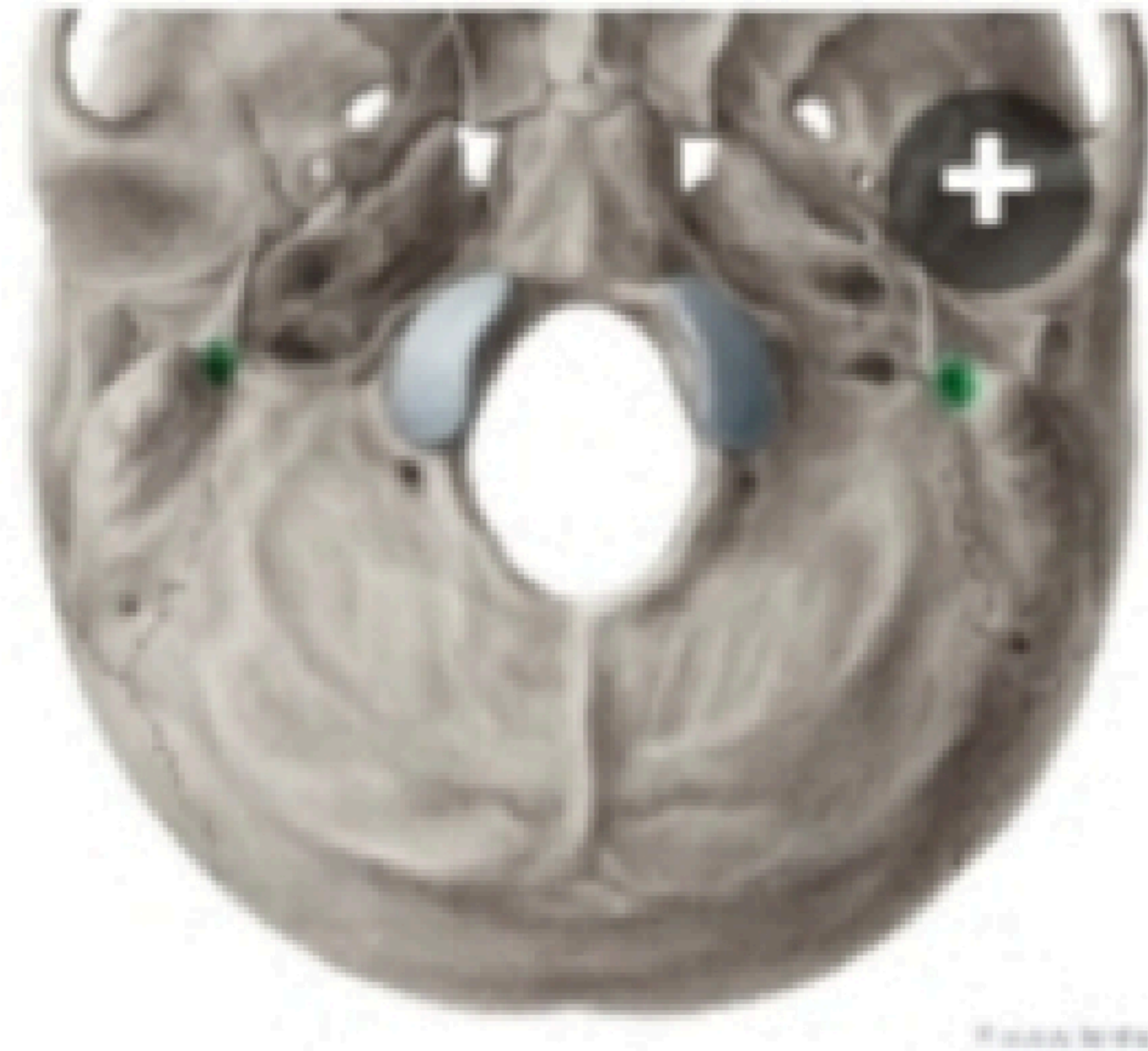
False



You got 1 of 1 points



1 / 1



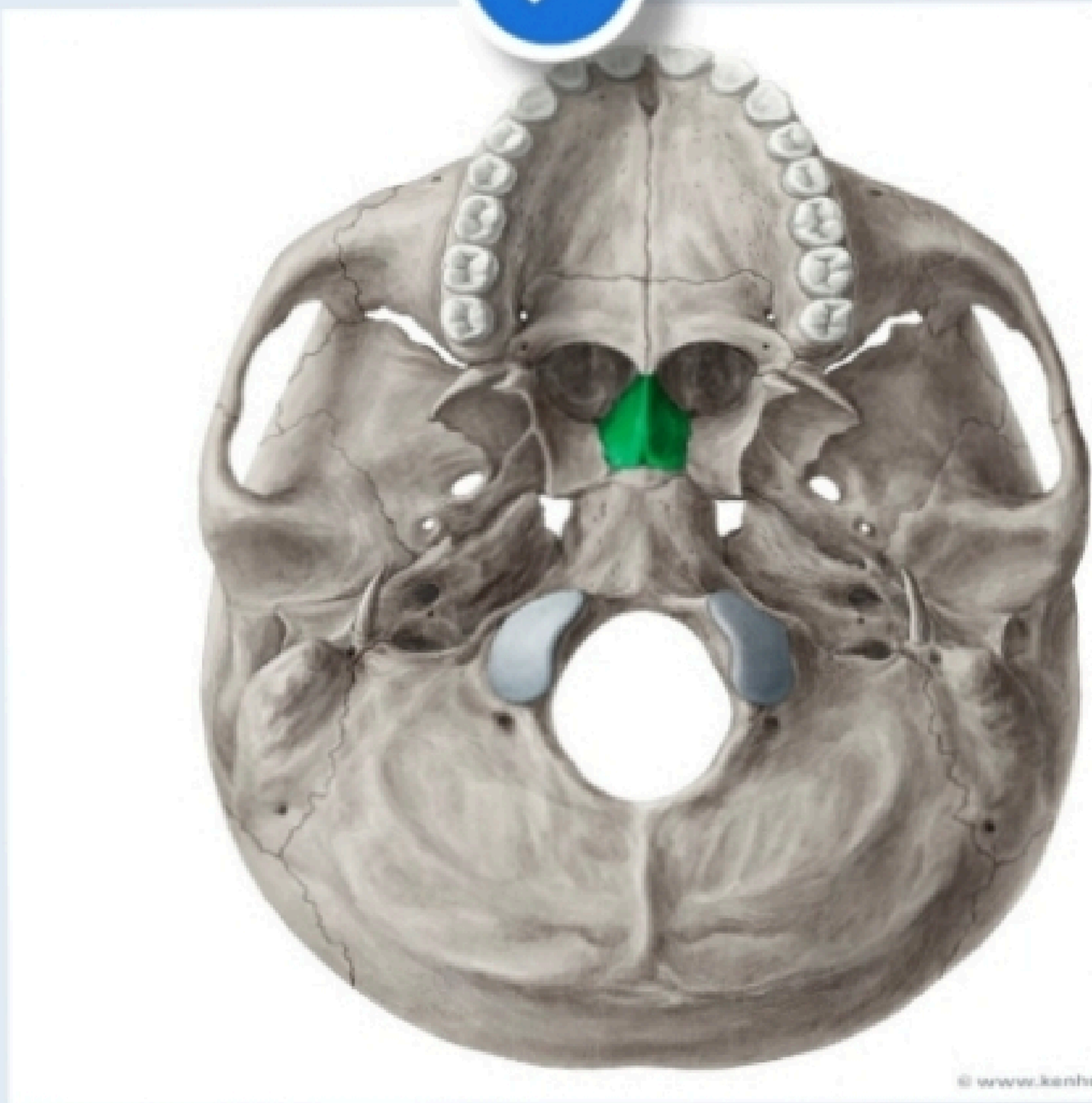
The facial nerve (7th cranial nerve) passes through the green highlighted foramen.

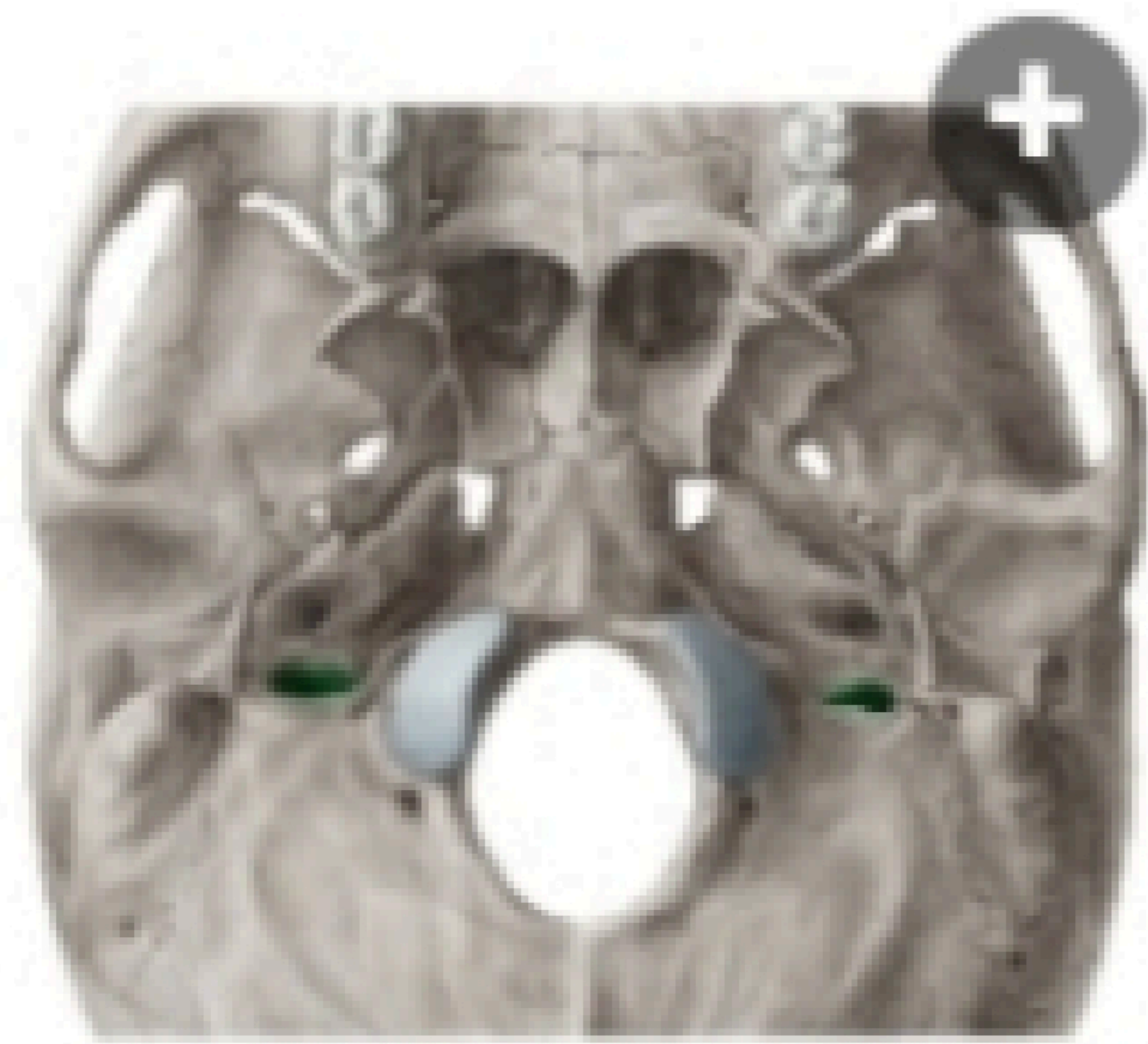
True



False

Which of the following is not a part of sphenoid bone?





Fill in the missing words

The green highlighted foramen lies between petrous and occipital bones and is called foramen.



Choose the wrong statement regarding the parts of the green highlighted bone?

- The carotid canal is a passage way in the temporal bone through which the internal carotid artery enters the middle cranial fossa from the neck.
- The petrous part forms the part of skull base between the sphenoid and occipital bones.
- The green highlighted bone articulates with occipital bone, parietal bone, sphenoid bone, zygomatic bone and maxilla.