

Abdominal Aorta

bc4 u start:

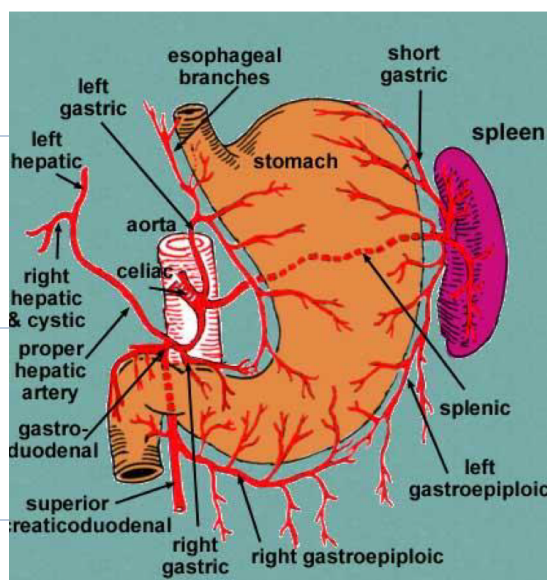
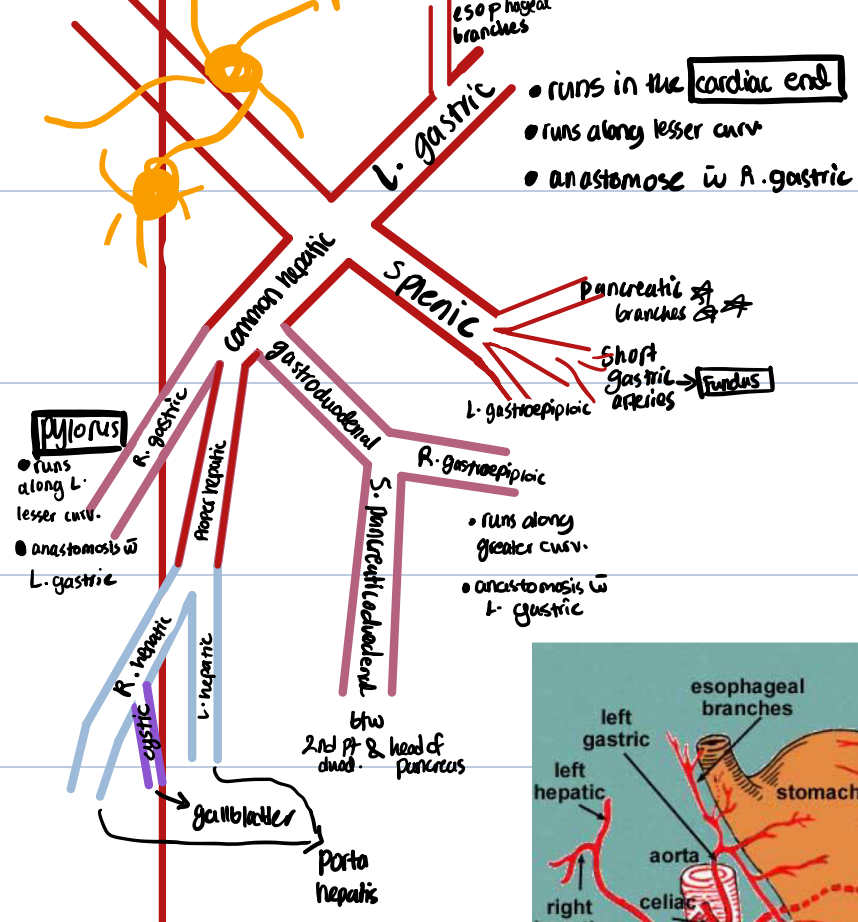
R: right B.V: blood vessels
 L: left
 S: superior ↑: ascending
 I: inferior ↓: descending
 L.V: Lymph nodes

lesser sac of peritoneum

L1
or
T12

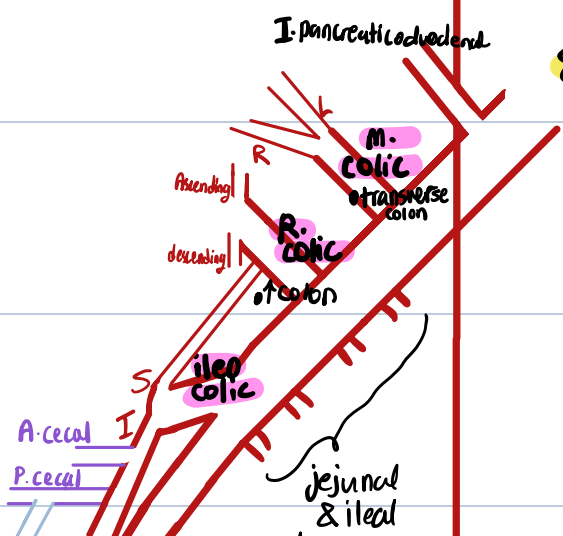
celiac

celiac plexus



S. mesenteric

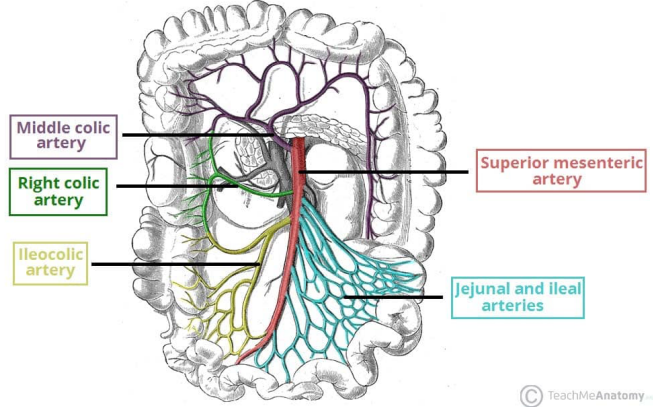
L2



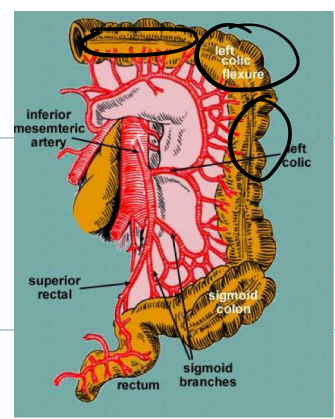
appendicular

branches

- * 12-15 #
- * Form arcades & further divide to form > arcades
- * Fewer arcades supply jejun than ileum
- * terminal arcades give straight vessels that supply the intestine



© TeachMeAnatomy



L3

I. mesenteric

L. Colic

Ascending

descending

distal 1/3 transverse colon

S. rectal

sigmoid

- 2/3 #
- ↓ colon + sigmoid colon

- crosses common iliac
- descends in pelvis behind rectum
- rectum & upper 1/2 anal canal
- anastomoses w middle & I rectal

common iliac

crossed by ureter

psaos

Sacroiliac jt

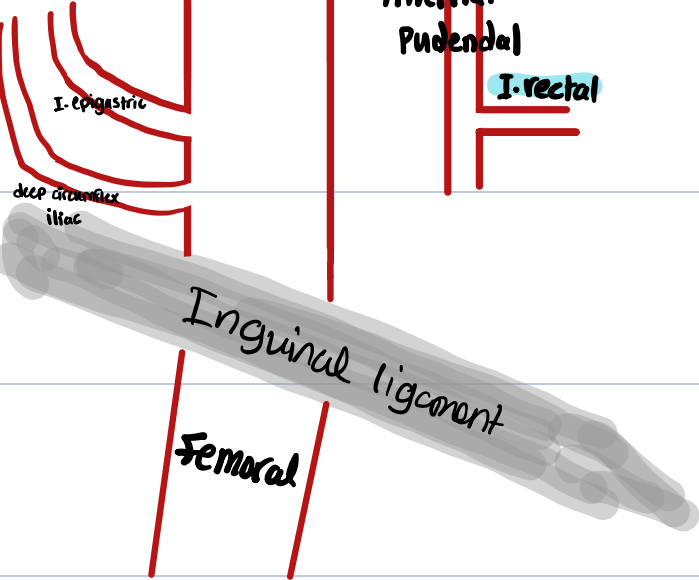
external iliac

hypogastric internal iliac

m. rectal

internal

2) يردعوا بيفادوا بعدين به لا تعرفون الا سي
 * internal iliac artery branches

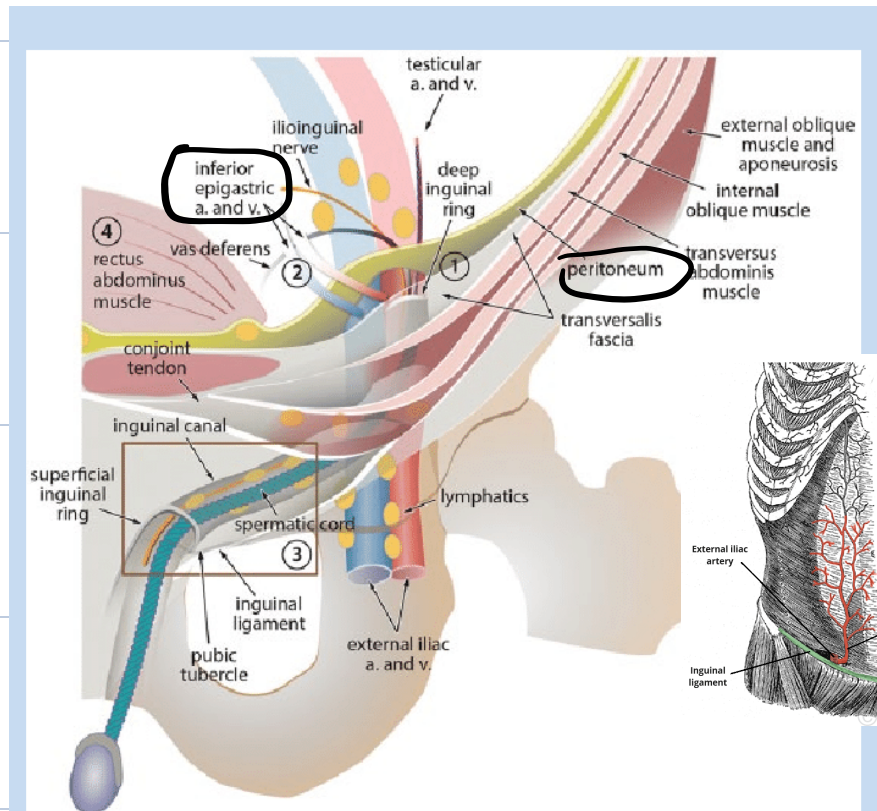


The internal iliac artery passes down into the pelvis in front of the sacroiliac joint

- Posterior [Iliolumbar artery](#)
- Posterior [Lateral sacral arteries](#)
- Posterior [Superior gluteal artery](#) - [greater sciatic foramen](#)
- Anterior [Obturator artery](#) (occasionally from [inferior epigastric artery](#)) - [obturator canal](#)
- Anterior [Inferior gluteal artery](#) - [greater sciatic foramen](#)
- Anterior [Umbilical artery superior vesical artery](#) (usually, but sometimes it branches directly from anterior trunk) [medial umbilical ligament](#)
- Anterior [Uterine artery](#) (females) or [deferential artery](#) (males) superior and vaginal branches [uterus](#), [vas deferens](#)
- Anterior [Vaginal artery](#) (females, can also arise from [uterine artery](#)) - [vagina](#)
- Anterior [inferior vesical artery](#) - [urinary bladder](#)
- Anterior [Middle rectal artery](#) - [rectum](#)
- Anterior [Internal pudendal artery](#)

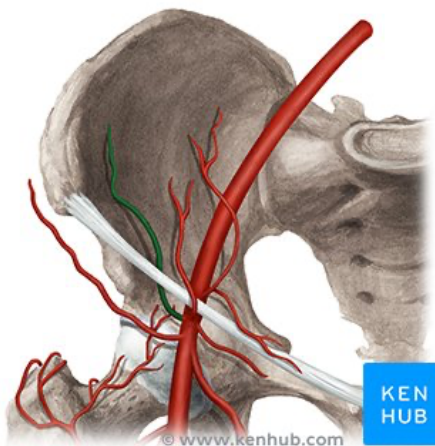
• note how I. epigastric

- It passes upward and medially along the medial margin of the deep inguinal ring and enters the rectus sheath behind the rectus abdominis muscle.



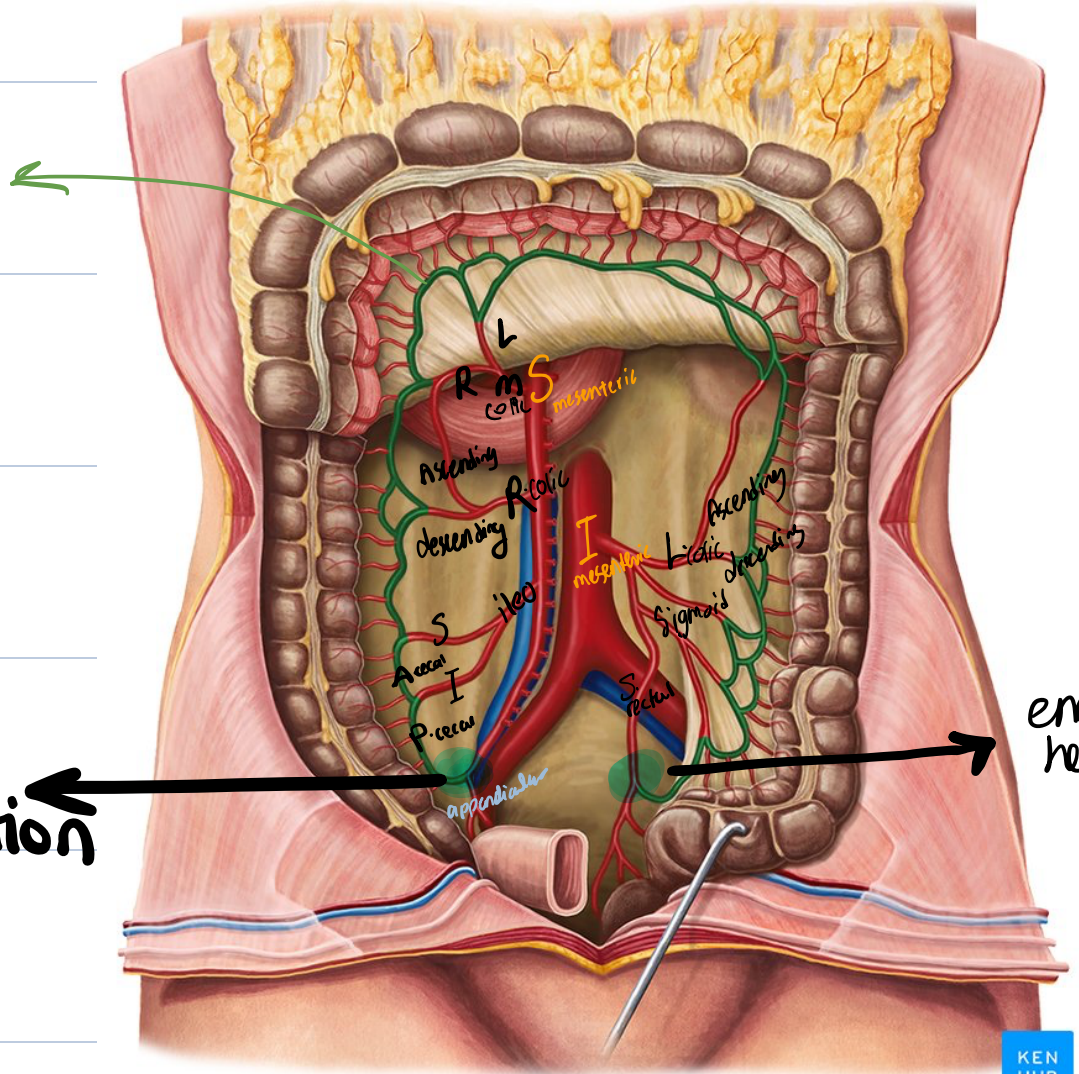
& how deep circumflex

- It ascends laterally to the anterior superior iliac spine and the iliac crest, supplying the muscles of the anterior abdominal wall.



Marginal artery

here it begins
ileocecal junction



ends
here