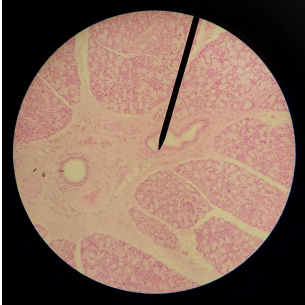


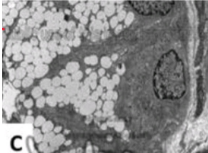
major salivary glands:



SIMPLE BRANCHED TUBULAR



mucus secretion.
cuboidal/ columnar cells = tubules.



sublingual glands

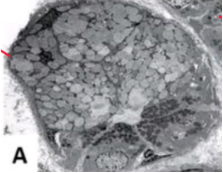


SIMPLE BRANCHED TUBULAR



mucus & serous secretion

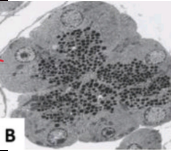
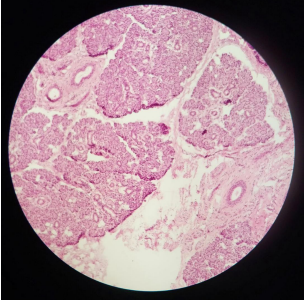
serous demilunes



submandibular(submaxillary) glands



SIMPLE BRANCHED ACINAR



parotid gland

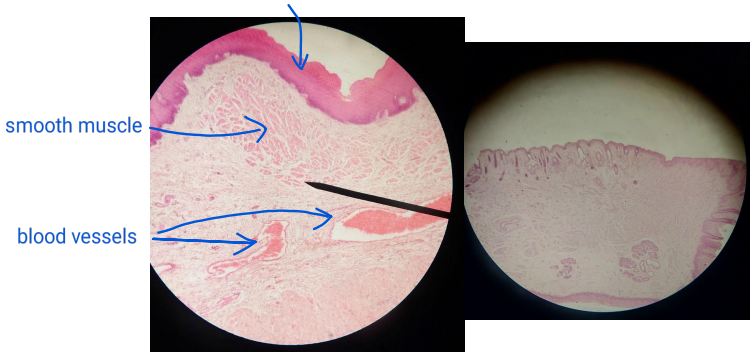
serous secretion
pyramidal cells = acinus

facial.N (chorda tympani).

facial.N (chorda tympani).

glossopharyngeal.N

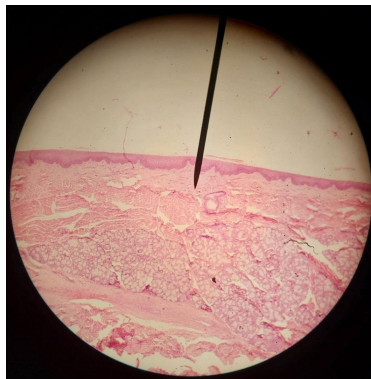
stratified squamous epithelium.



lip

facial N

- outer (skin) : keratinized.
- transitional (vermillion): modified/ para-keratinized.
- inner : non - keratinized.



intrinsic muscles:

- longitudinal.
- transverse.
- vertical.

tongue

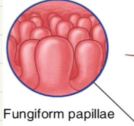
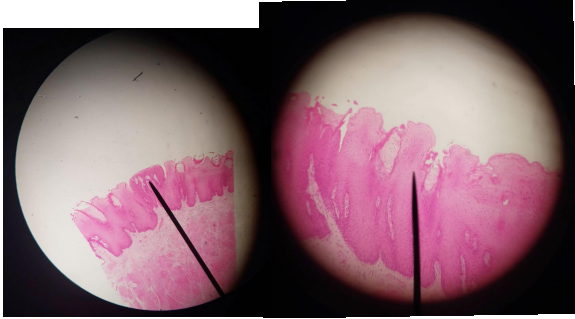
- anterior 2/3:
 - sensory: mandibular - lingual.
 - taste: facial - chorda tympani.
- posterior 1/3:
 - sensory & taste : Glossopharyngeal.
 - motor: Hypoglossal +(vagus for palatoglossus).

- upper surface (dorsal): para keratinized.
- lower surface (ventral): non- keratinized.

minor salivary glands

stratified squamous
para keratinized.

facial .N



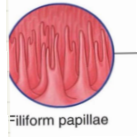
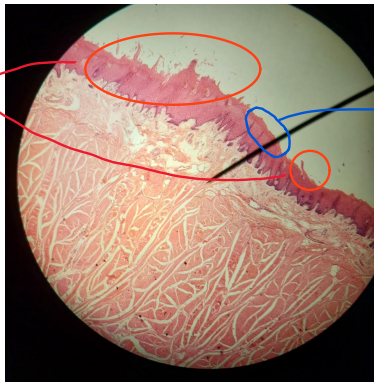
fungiform Papilla narrow machroom.

projection= filiform.

no projection= fungiform.

- stratified squamous
keratinized.
- no taste buds.

facial .N



filiform papillae elongated conical.

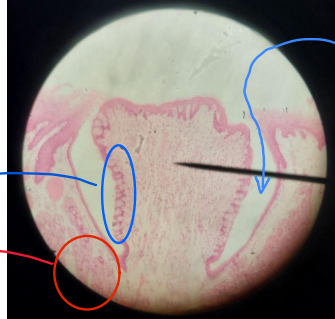
-stratified squamous
para keratinized.

Glossopharyngeal

taste buds

Von Ebner's gland
(serous glands)

groove/ sulcus.

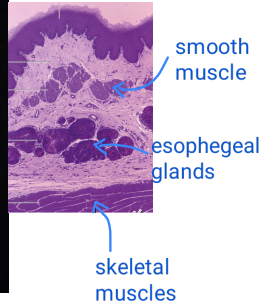
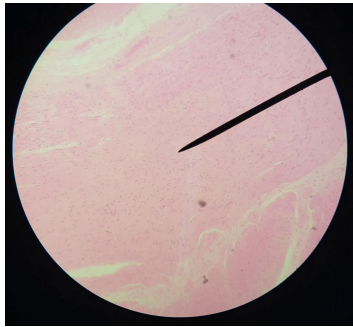


circumvallate papillae

esophegus:

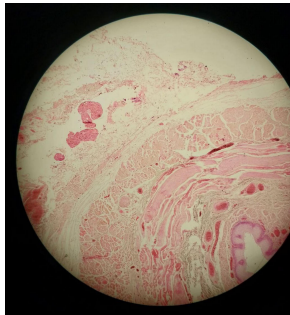
retroperitoneal (above diaphragm).
intrapertoneal (below diaphragm).

skeletal muscles (striated).

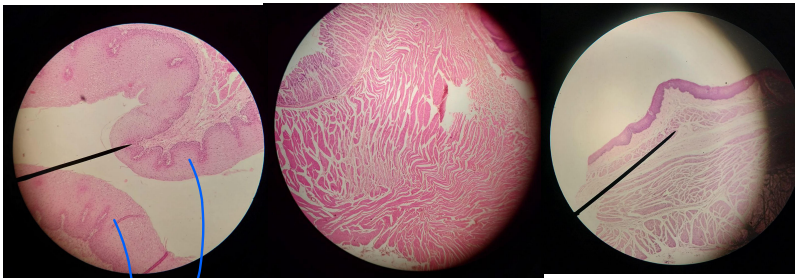


upper esophageal 1/3

skeletal & smooth muscles



middle esophageal 1/3



stratified squamous non keratinized

smooth muscles

lower esophageal 1/3

stomach:

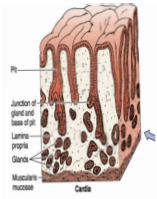
intrapertoneal

- simple cuboidal/ columnar without goblet cells.



cardia

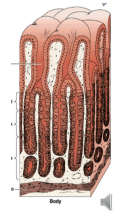
50 % glands (simple/ branched tubular).
50% pits.



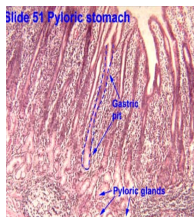
fundus/body

muscularis externa:
-oblique
-circular
-longitudinal

3/5 glands (branched tubular).
2/5 pits (short + wide).

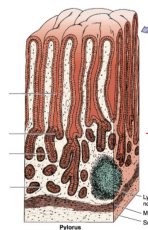


thickened smooth muscle



pylorus

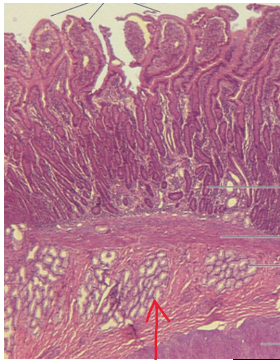
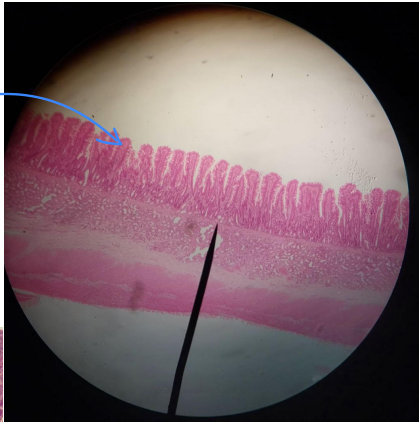
little glands (short, branched, tubular).
mostly pits (long, narrow).



small intestine :

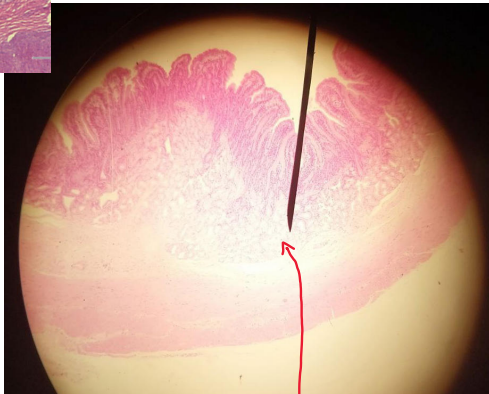
simple columnar with goblet cells.

villi; leaf like projections.



duodenum

1st and last inches. intraperitoneal.
the rest : retroperitoneal.



Brunner's glands in submucosa.



plica circularis

jejunum

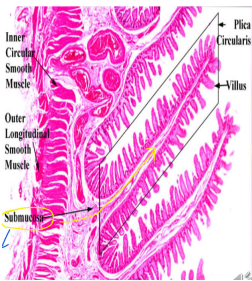
intrapertoneal



villi

smooth muscle layer

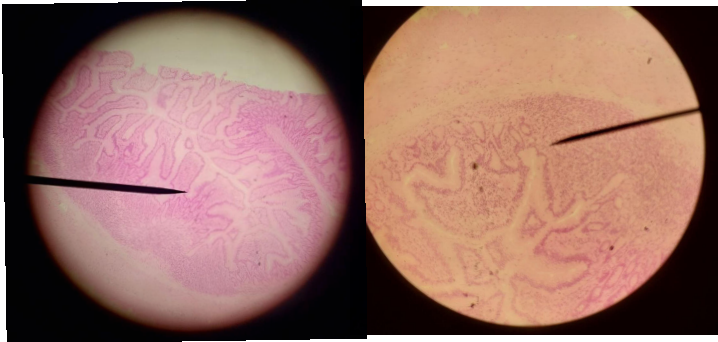
paneth cells





ileum

intrapertoneal



Peyer's patches

- covered by M (microfold) cells
- devoid of villi.

Done by Laila Ali.