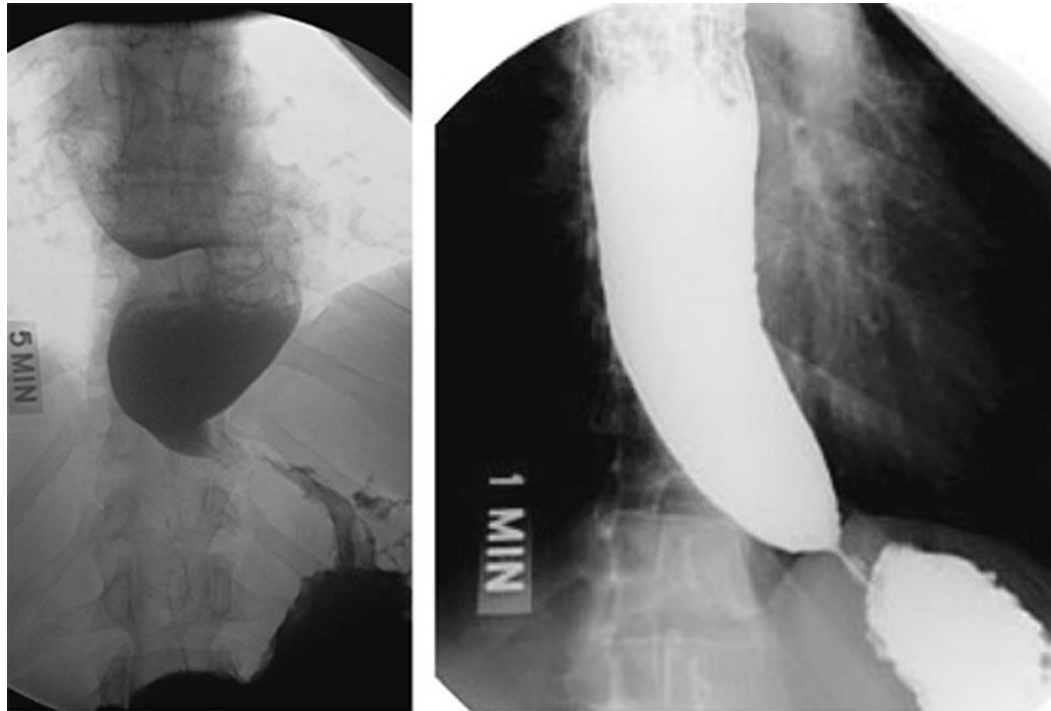


# Pathology lab slides

Manar Hajeer, MD, FRCPath

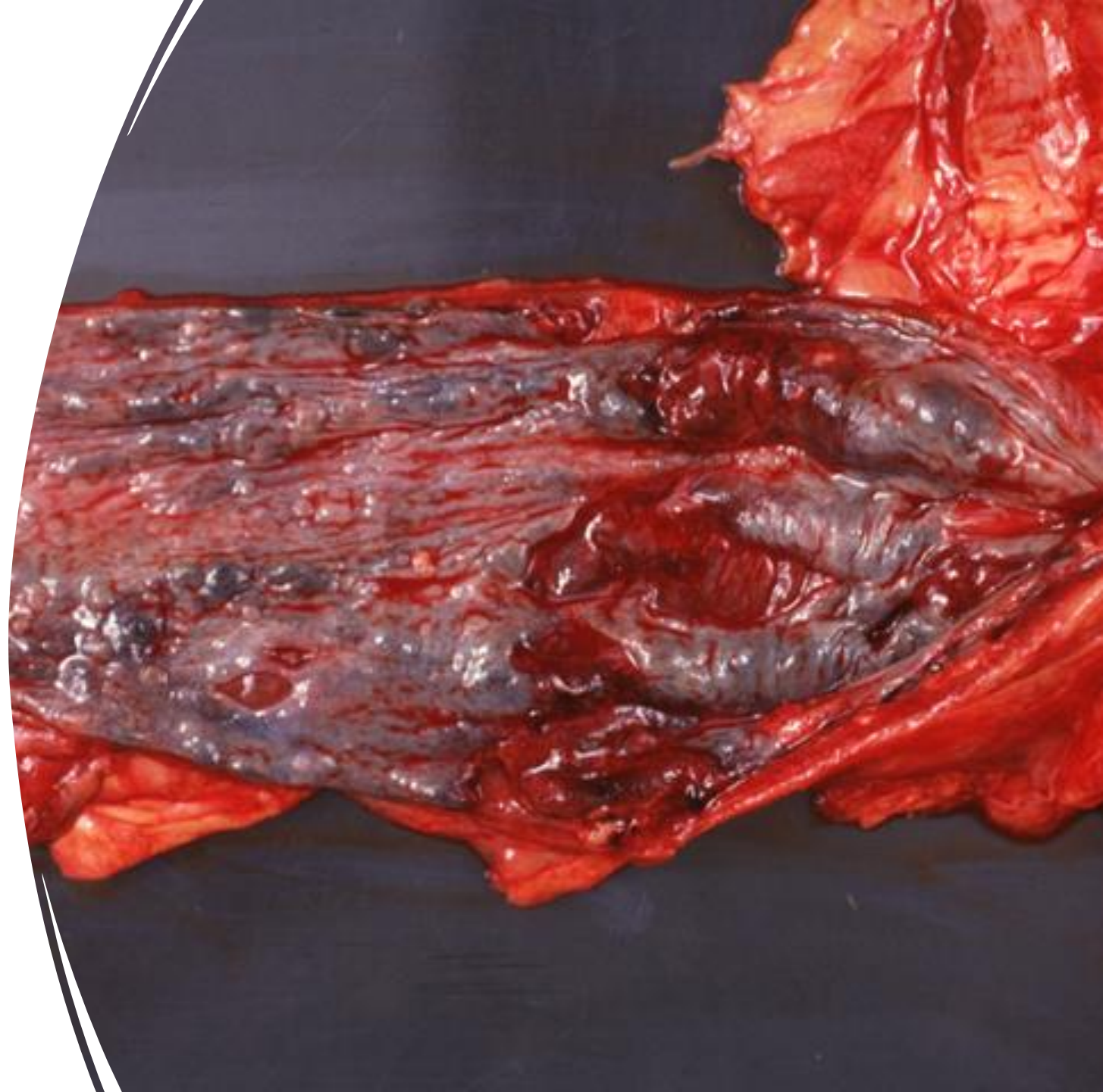
The university of Jordan, School of medicine

# Achalasia



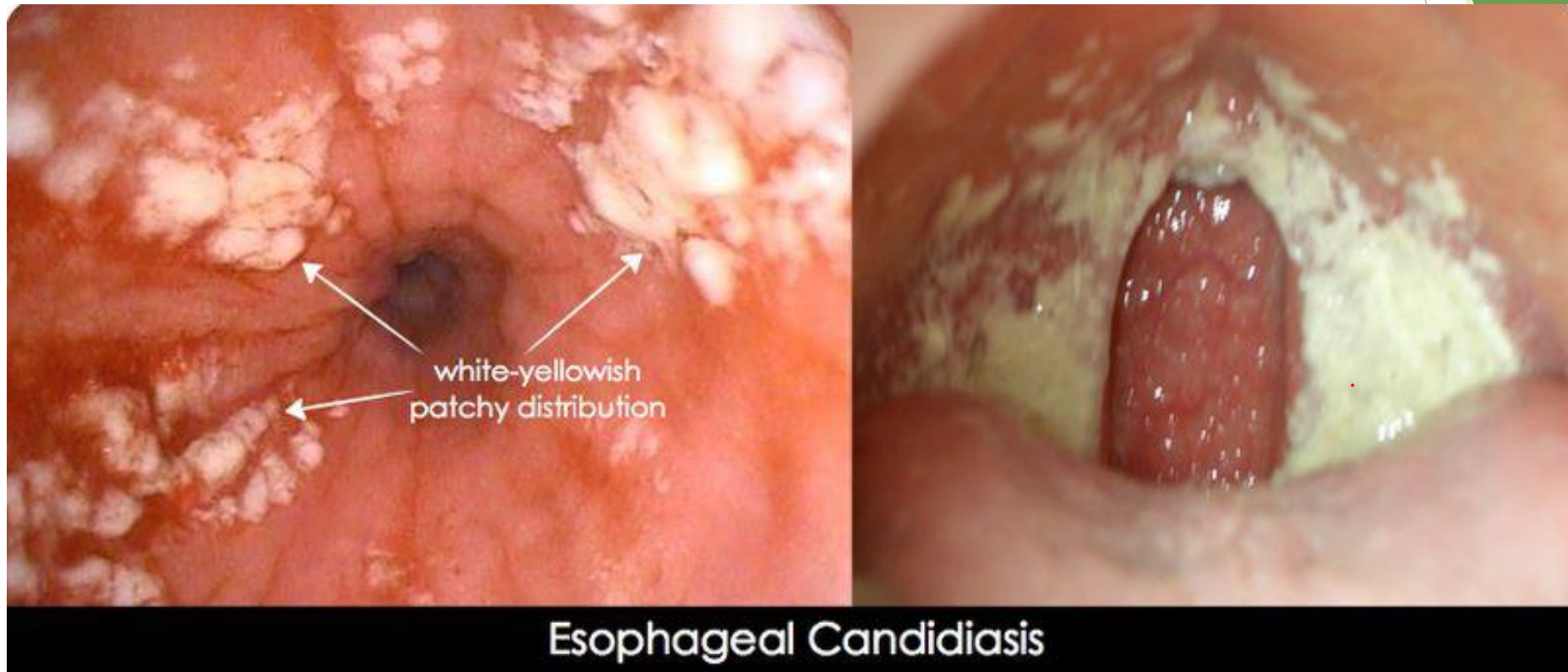
Source: Longo DL, Fauci AS, Kasper DL, Hauser SL, Jameson JL, Loscalzo J: *Harrison's Principles of Internal Medicine, 18th Edition*: [www.accessmedicine.com](http://www.accessmedicine.com)  
Copyright © The McGraw-Hill Companies, Inc. All rights reserved.

# Esophageal varices



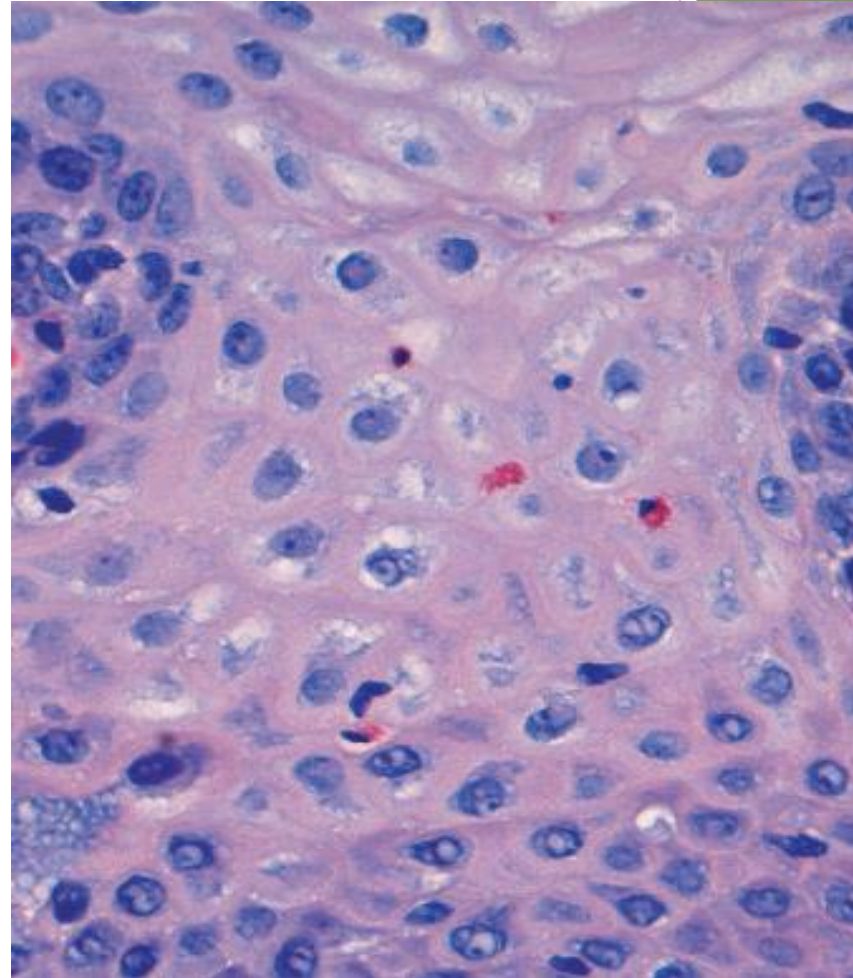
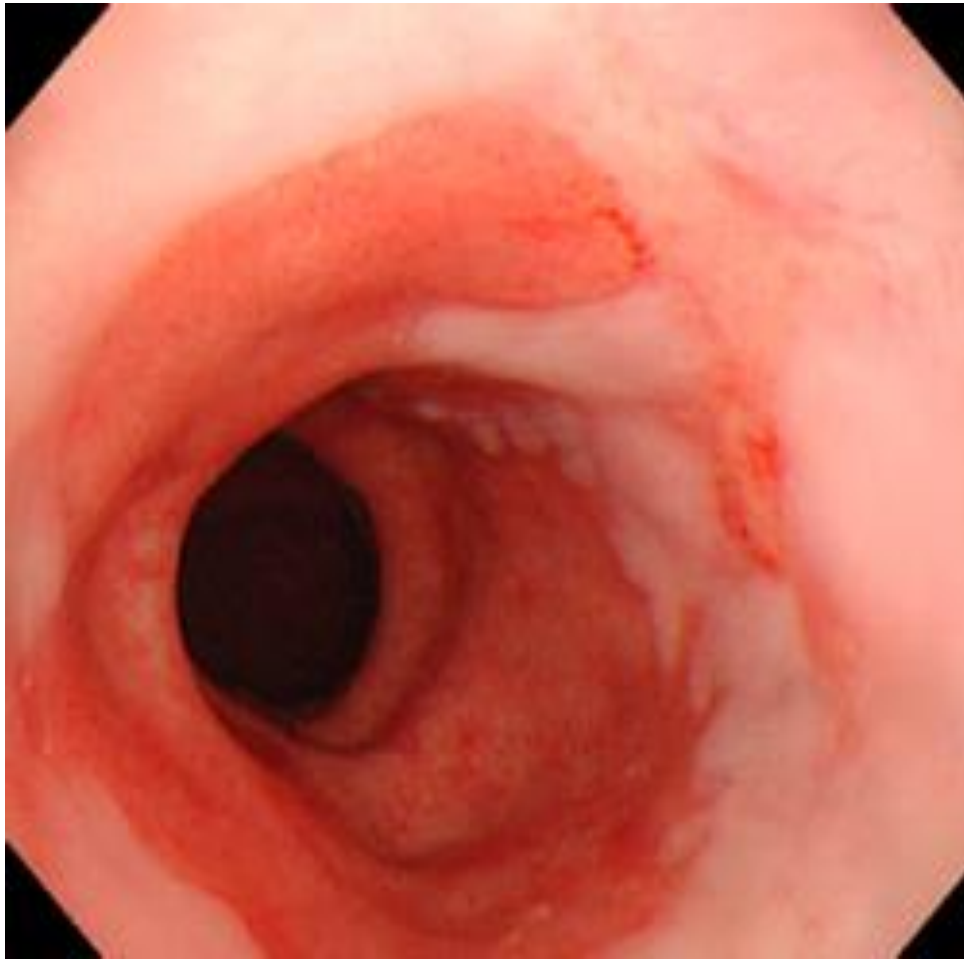
- [Medpics - UCSD School of Medicine](#)

# Esophageal candidiasis



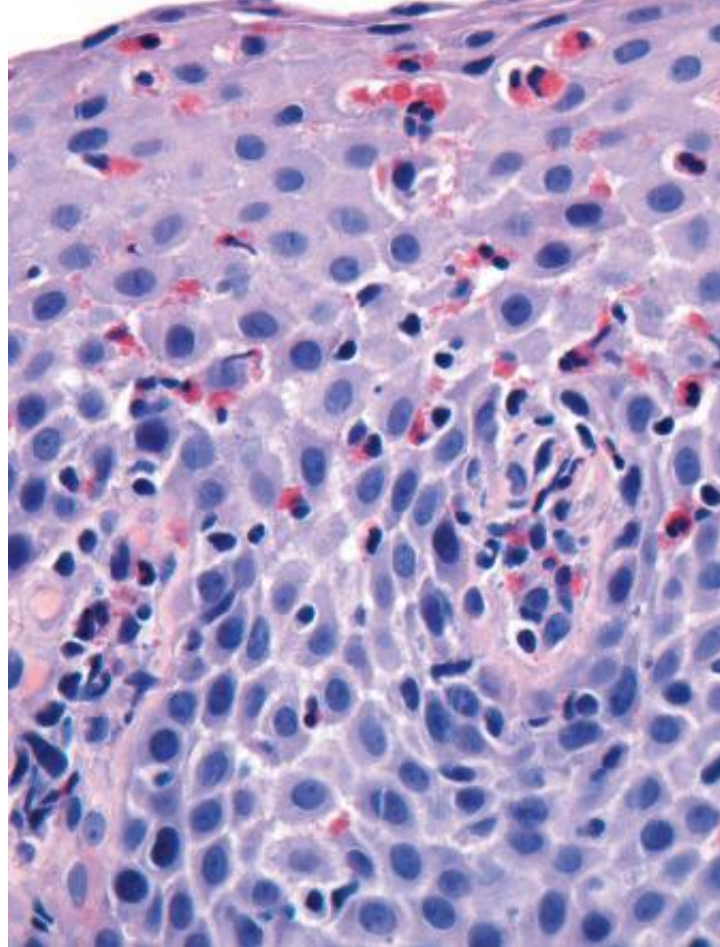
<https://www.pinterest.com/pin/374291419013418659/>

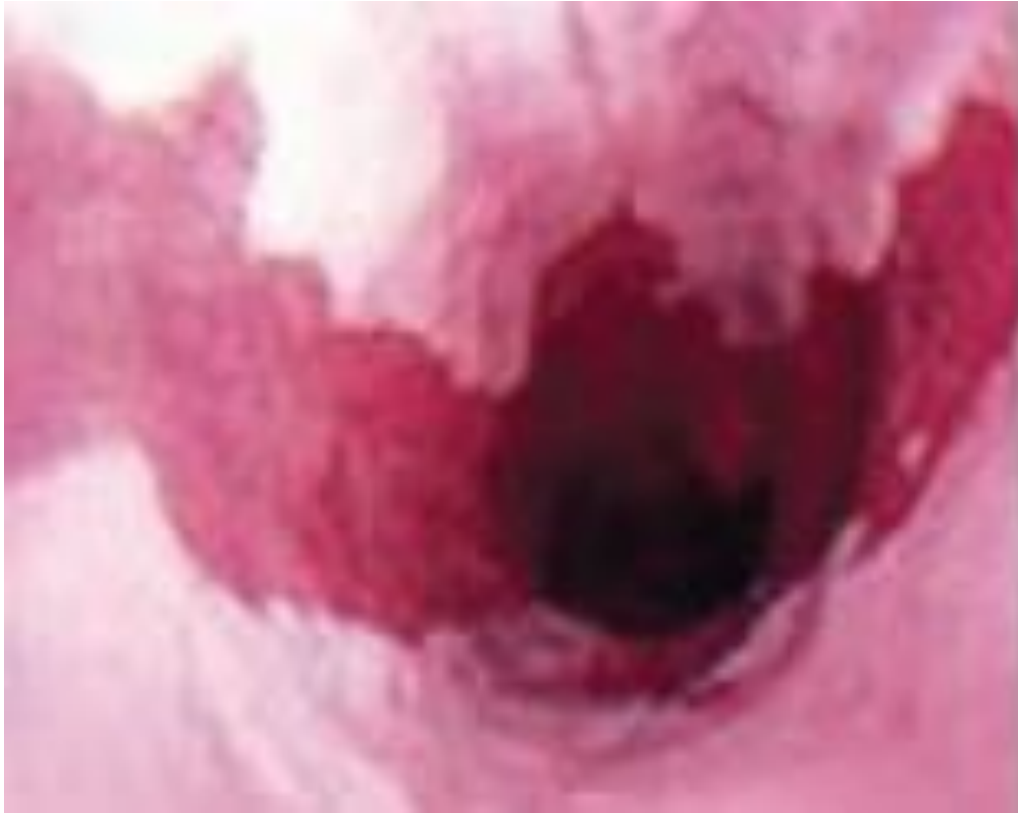




Reflux  
esophagitis

# Rings in eosinophilic esophagitis

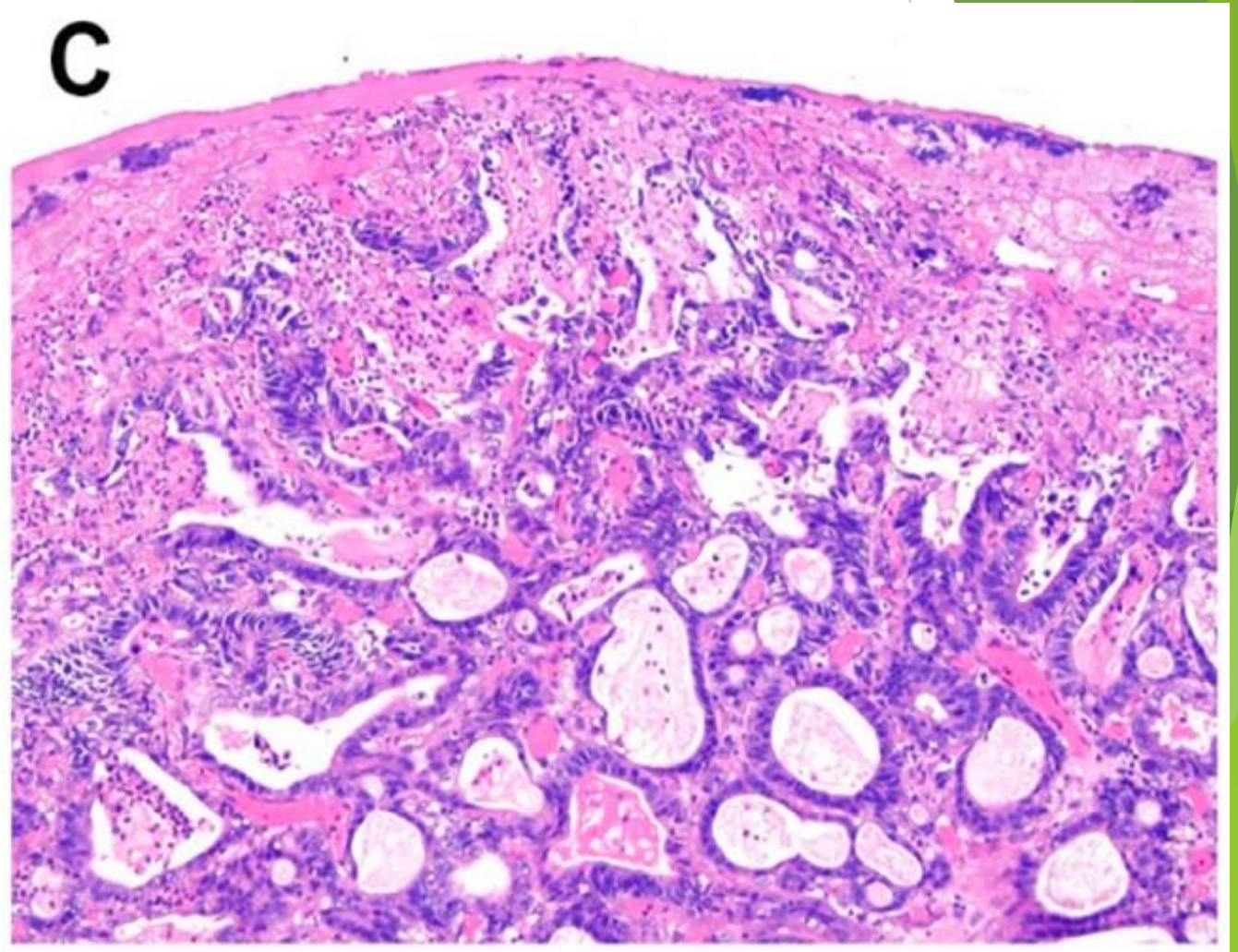




Tongues in Barrett  
esophagus



# Esophageal adenocarcinoma



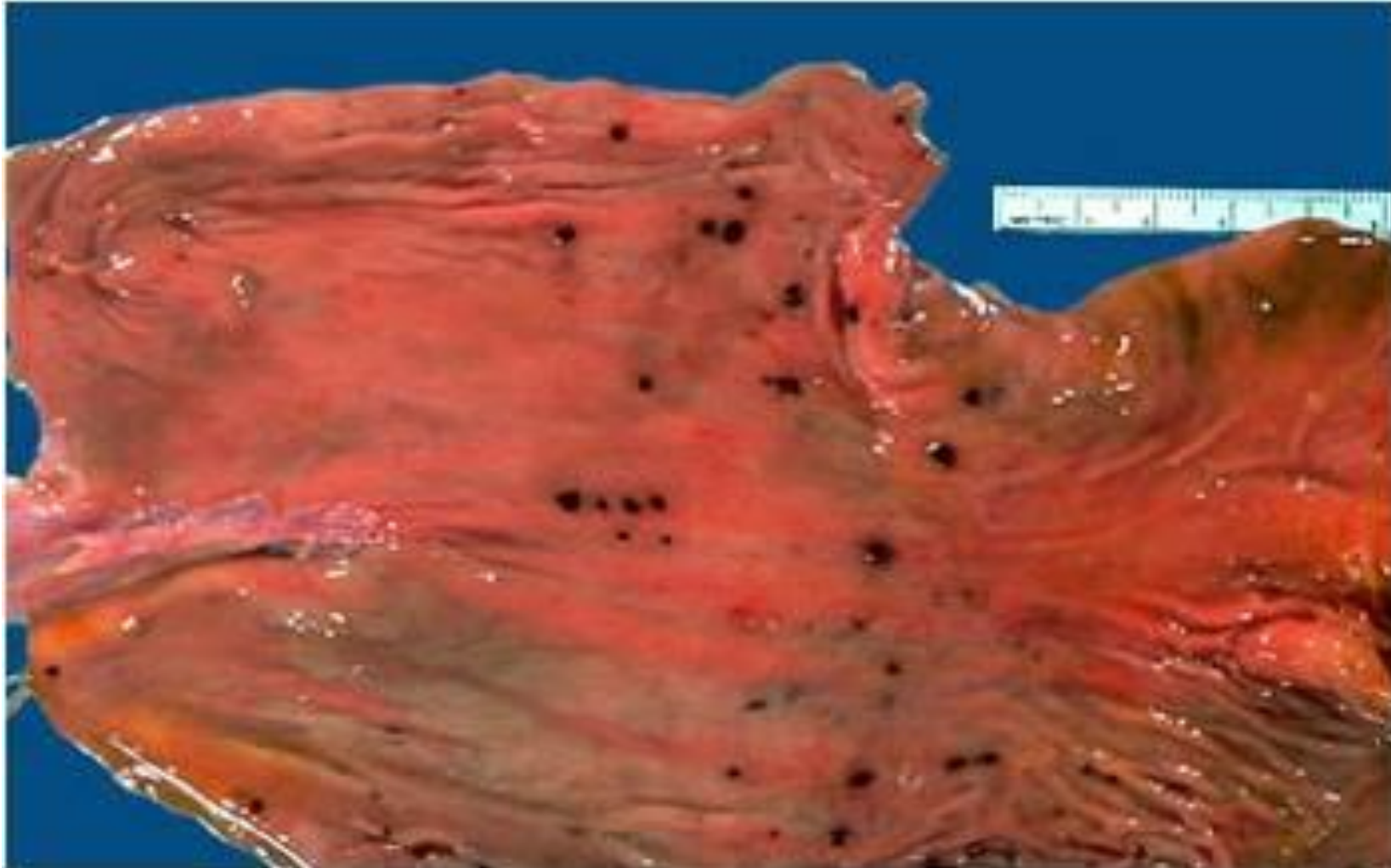


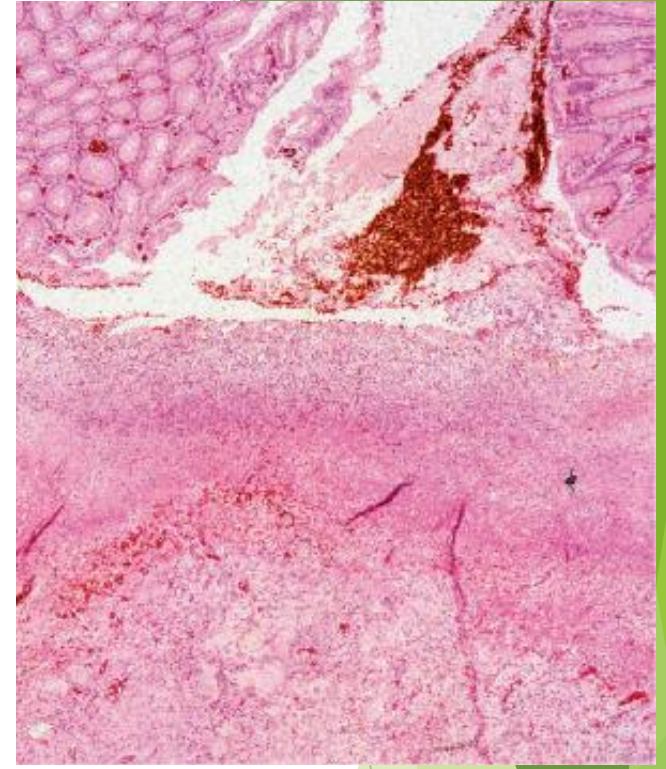
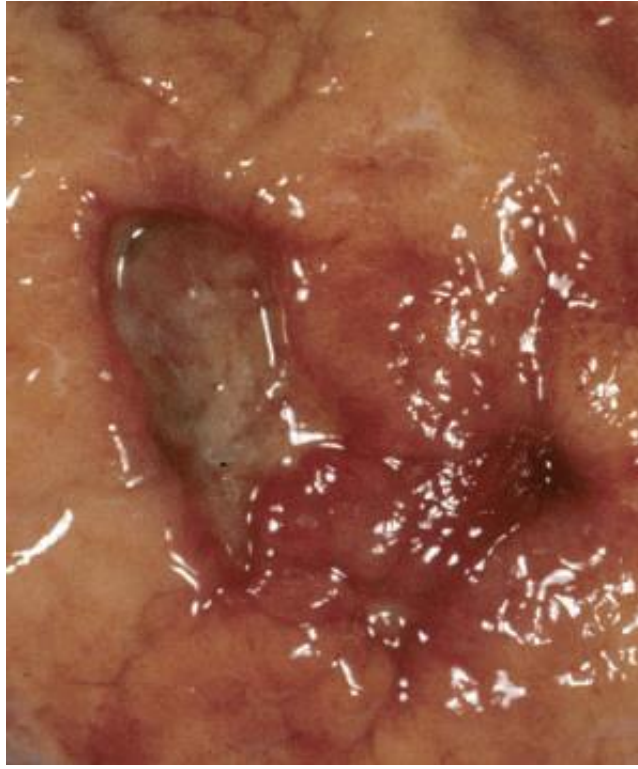
# Mid esophagus



- ▶ Esophageal squamous cell carcinoma

# Stress gastric ulcers





## Chronic gastric ulcers



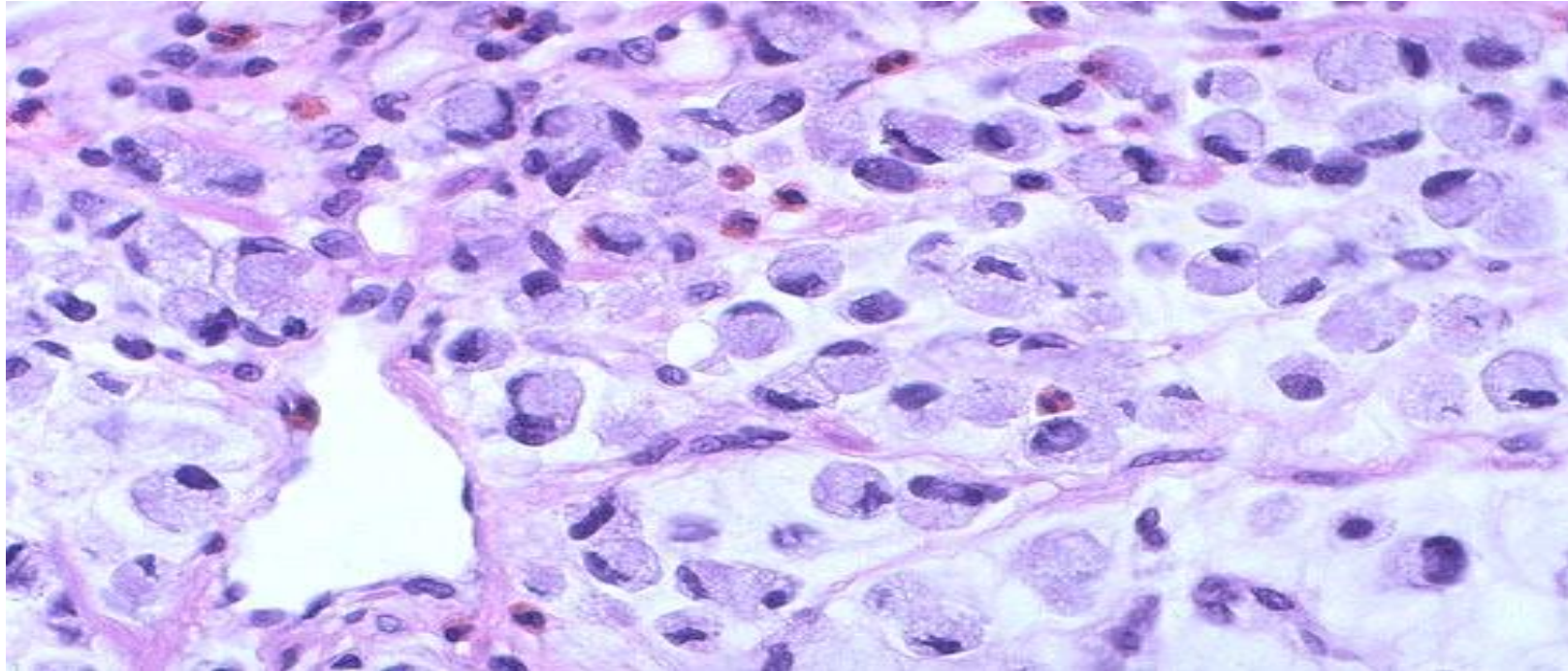
# Duodenal ulcer



- ▶ Diffuse type gastric cancer (linitis plastica)







Diffuse type, signet ring cells



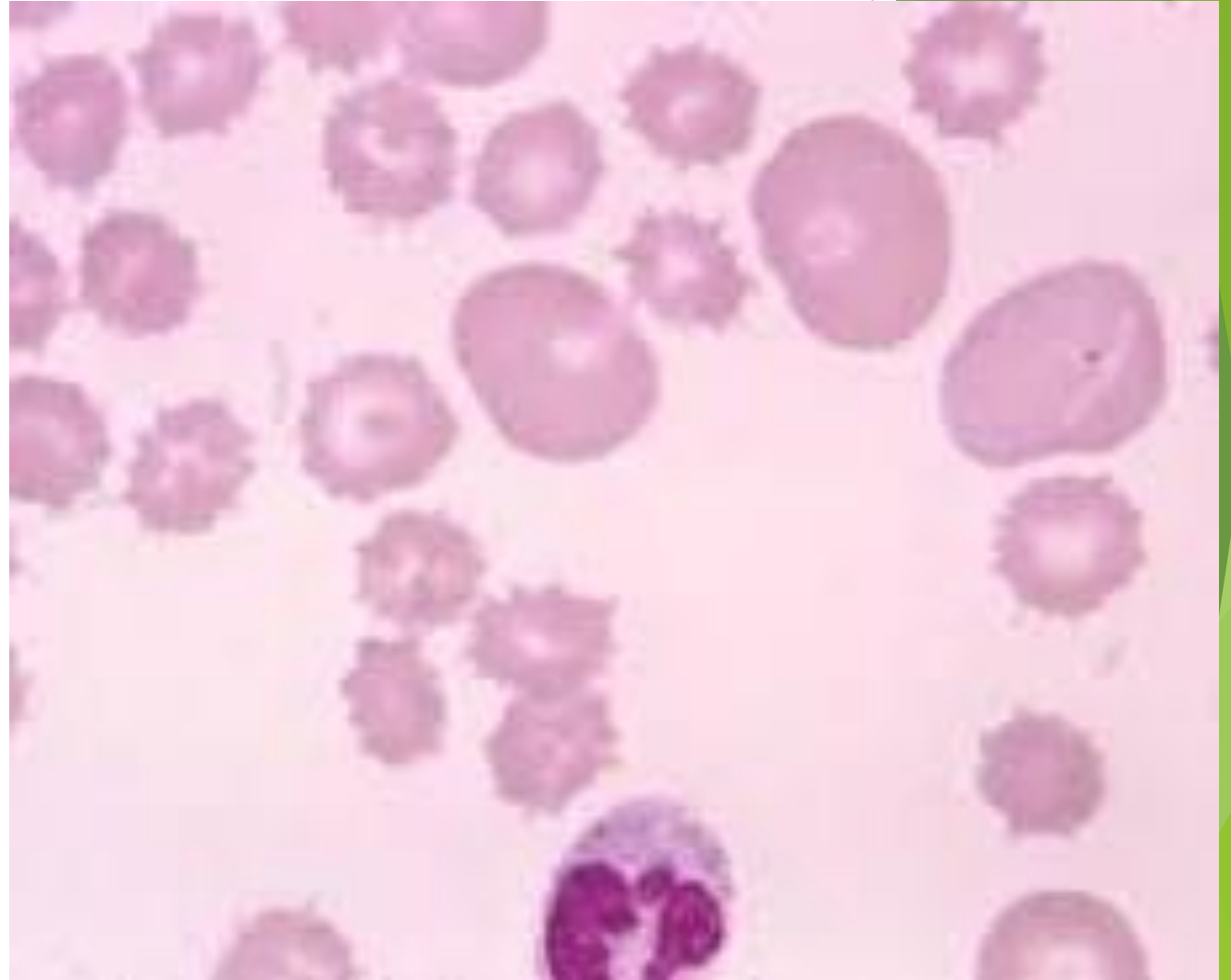
# Meckel's diverticulum



# Dermatitis herpetiformis with celiac disease.

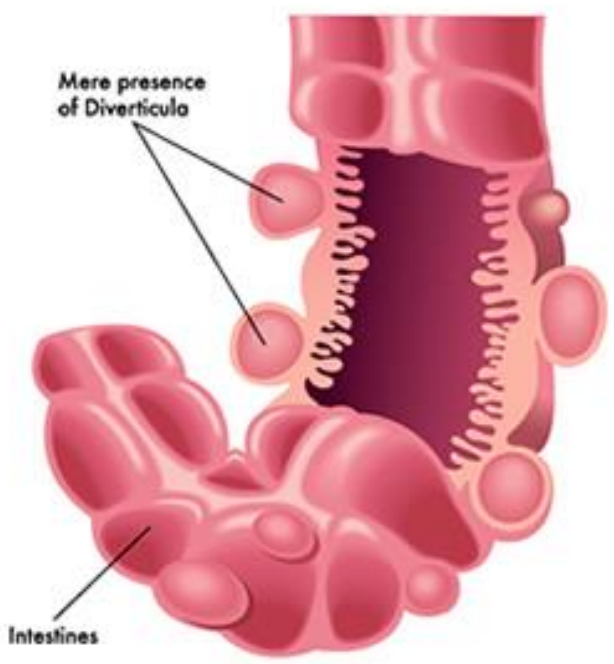


- ▶ Spur cells in abetalipoproteinemia

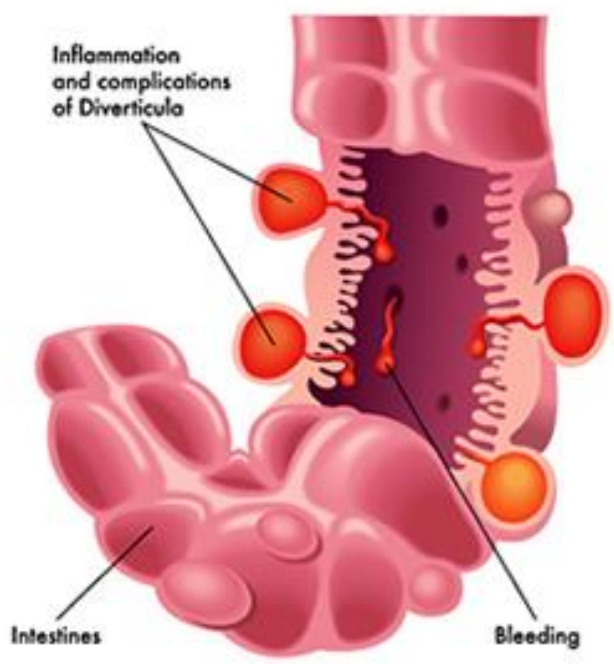


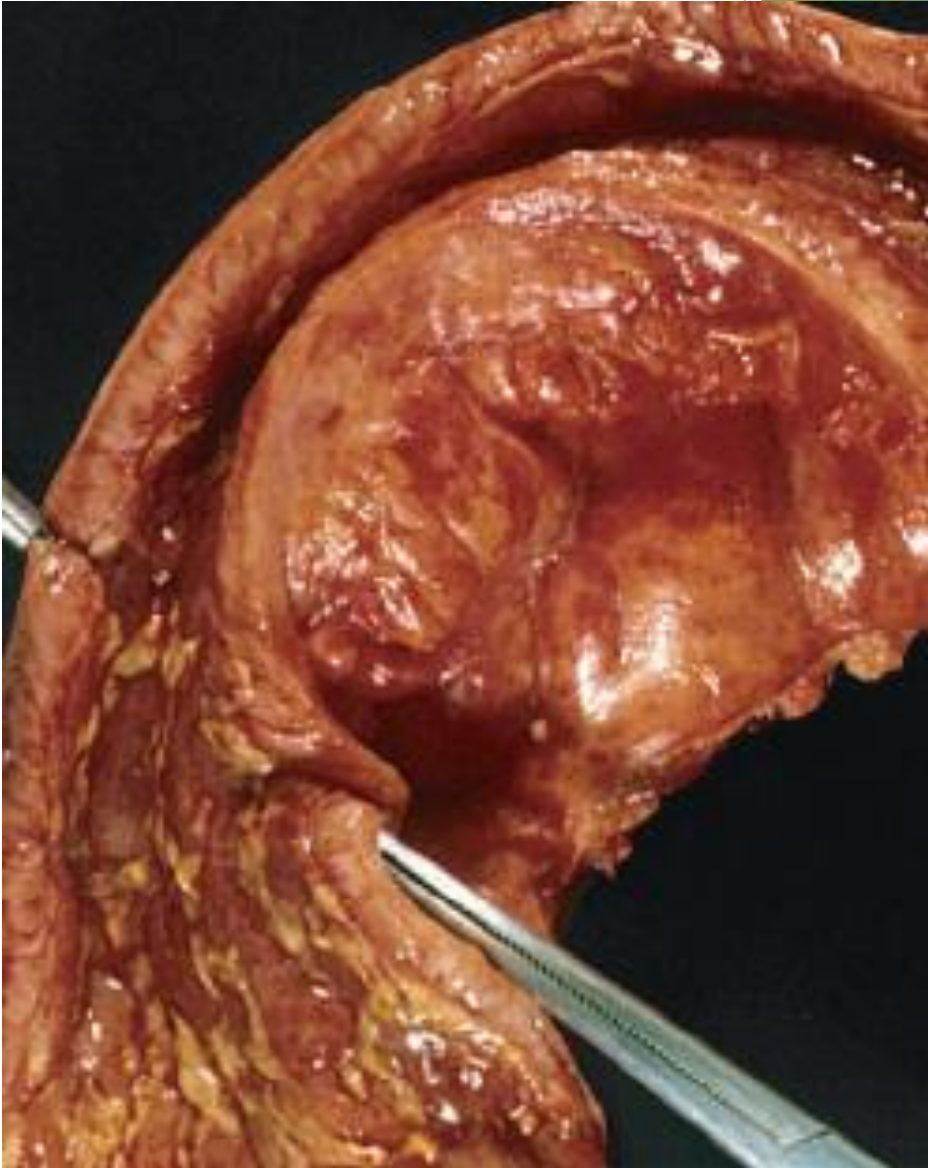


### Diverticulosis



### Diverticulitis





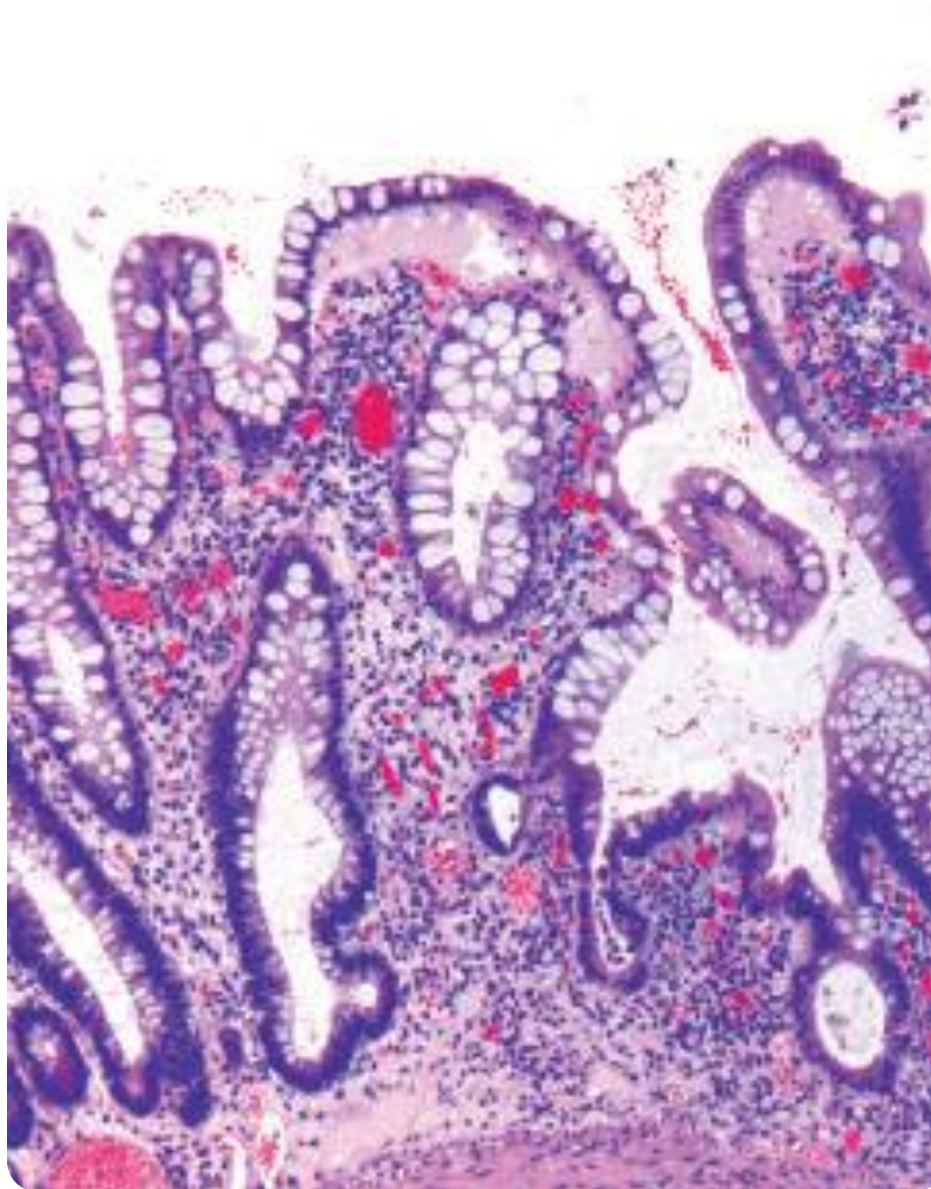


Cobblestone appearance



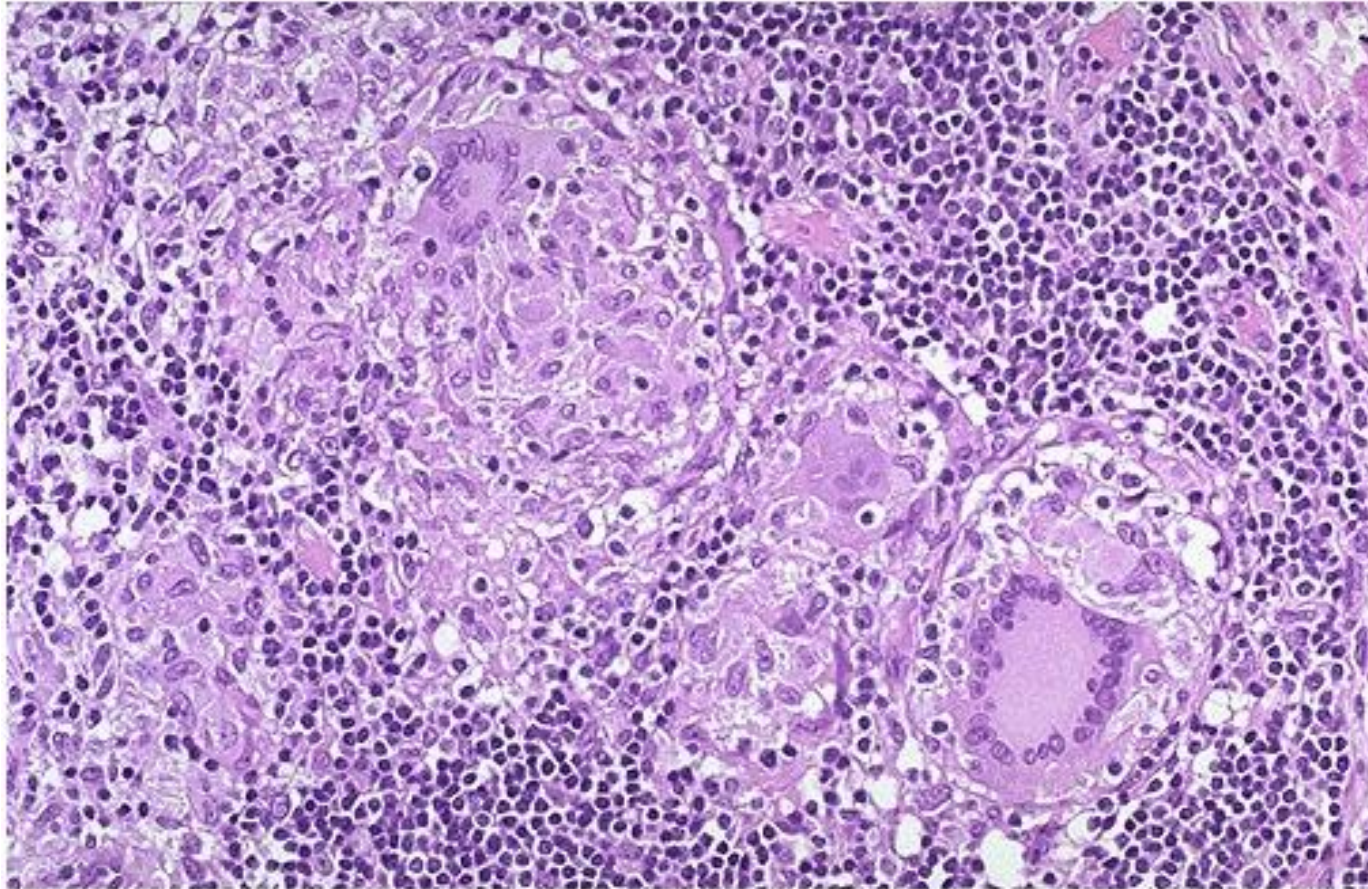
# Cobblestone appearance , Crohn disease





Haphazardly arranged  
crypts, CIBD





non-casating granuloma, Crohn disease.



# Erythema nodosum, Crohn disease



# Clubbing



[Wikipedia](#)

# Toxic megacolon





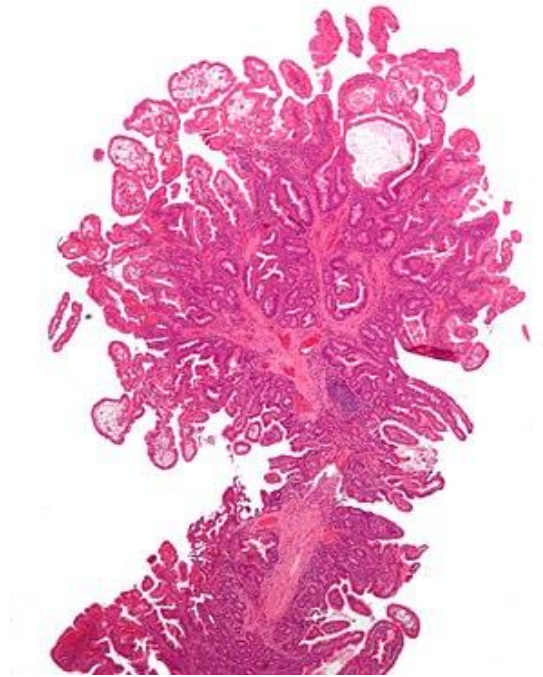
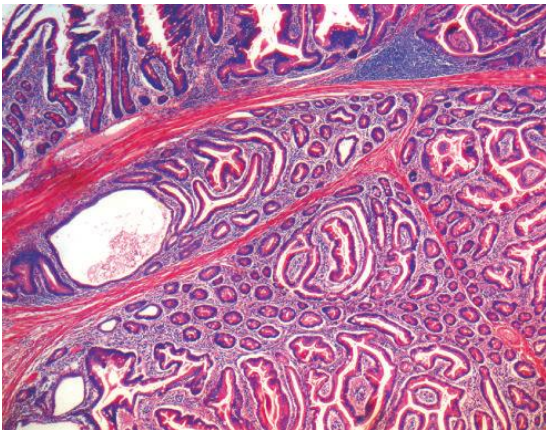
# Pancolitis.



Abrupt transition b/w normal and disease segment, ulcerative colitis.



# Peutz-Jeghers polyp



- ▶ Christmas tree pattern.



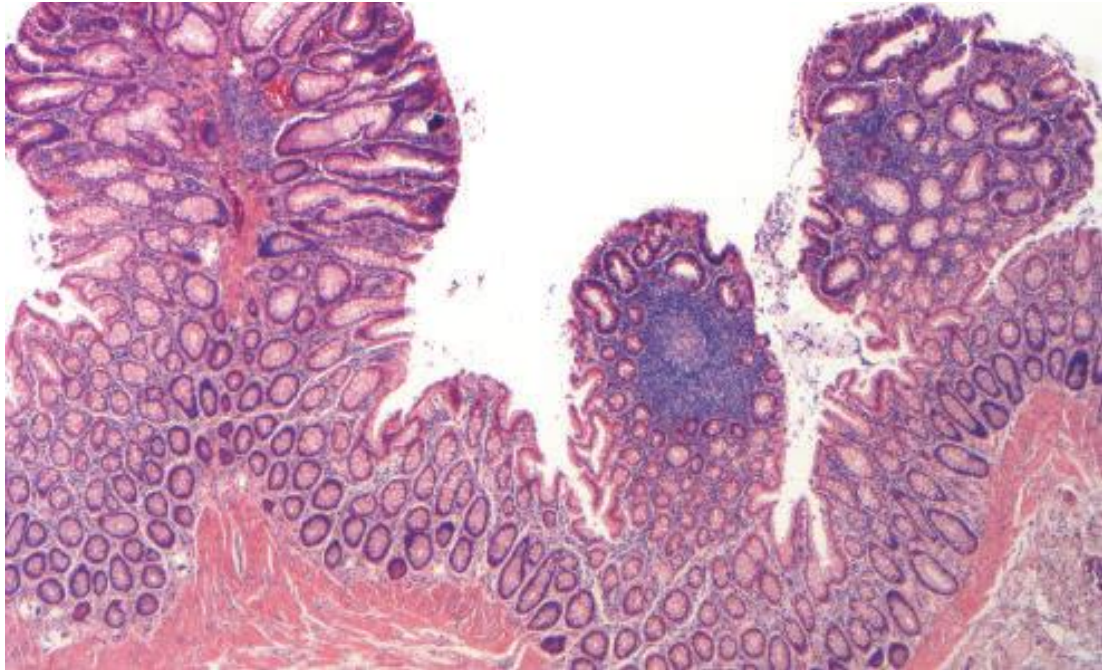
# Mucocutaneous pigmentation, Peutz Jegher syndrome



- ▶ Familial adenomatous polyposis







▶ FAP

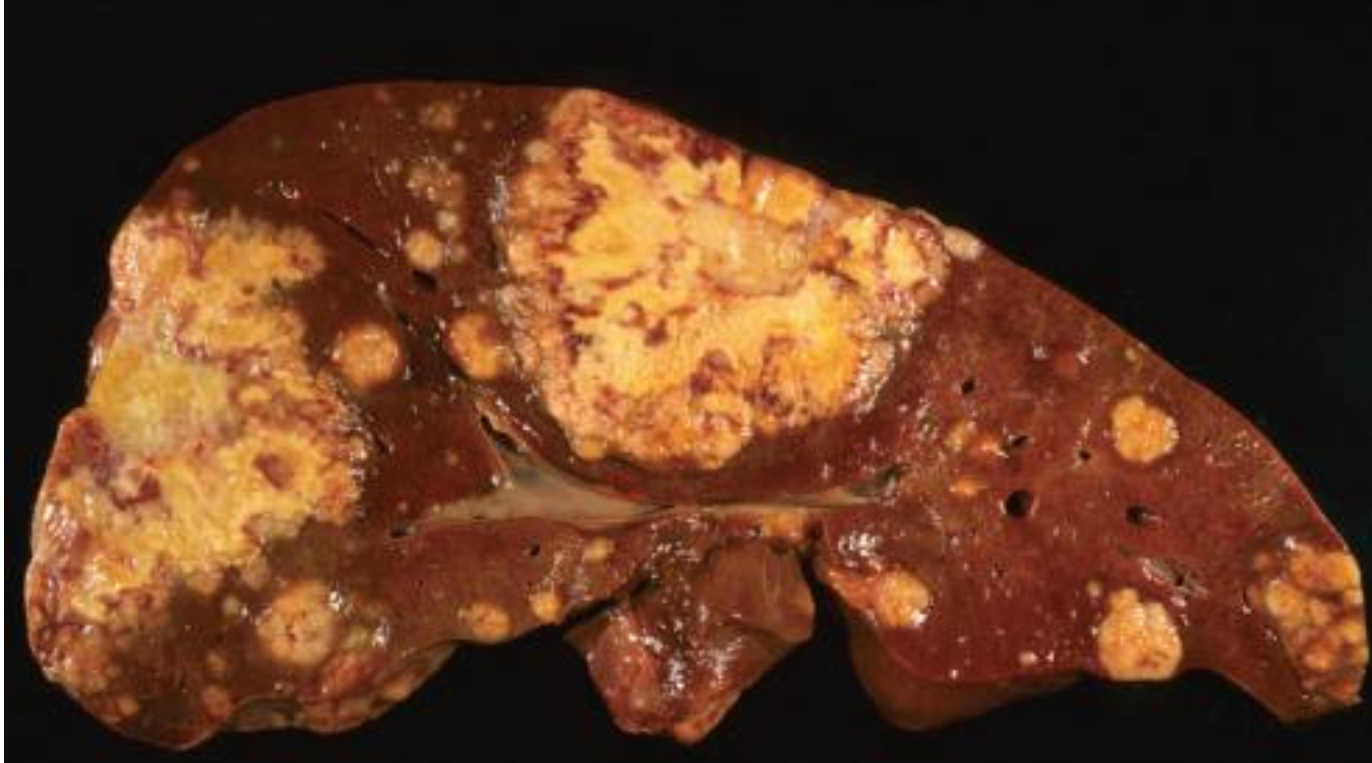


# Cecal polyps in HNPCC.



# Exophytic adenocarcinoma, colon

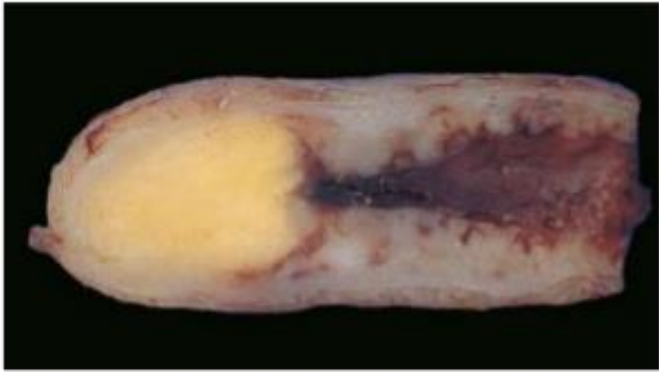




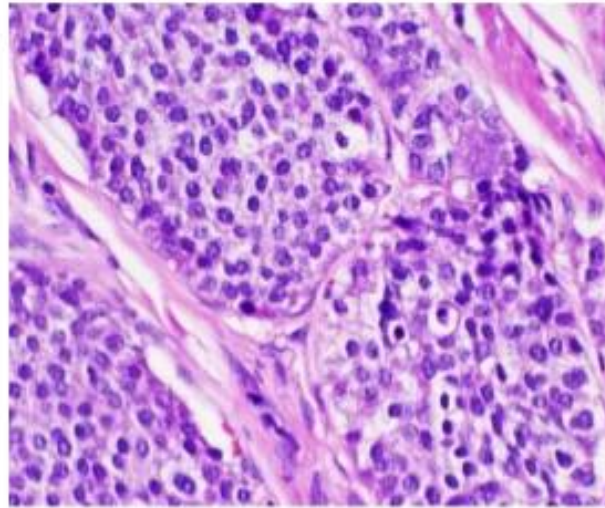
Liver metastasis from colon cancer.



# Carcinoid tumor



Gross



Microscopic

► Appendix