

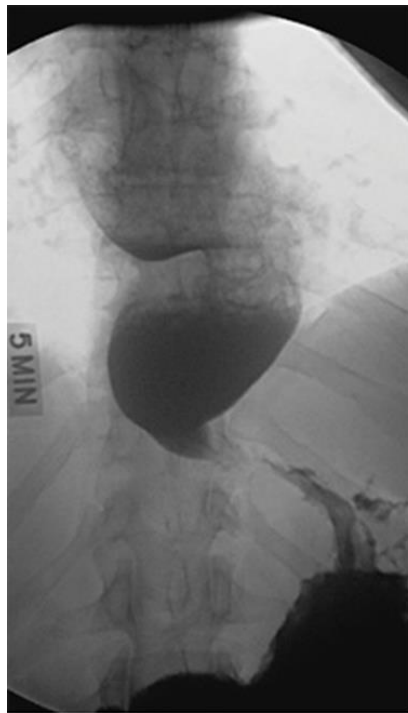
# Pathology lab slides

Manar Hajeer, MD, FRCPath

The university of Jordan, School of medicine

Manar Hajeer MD FRCPath

# Achalasia



→ esophagus

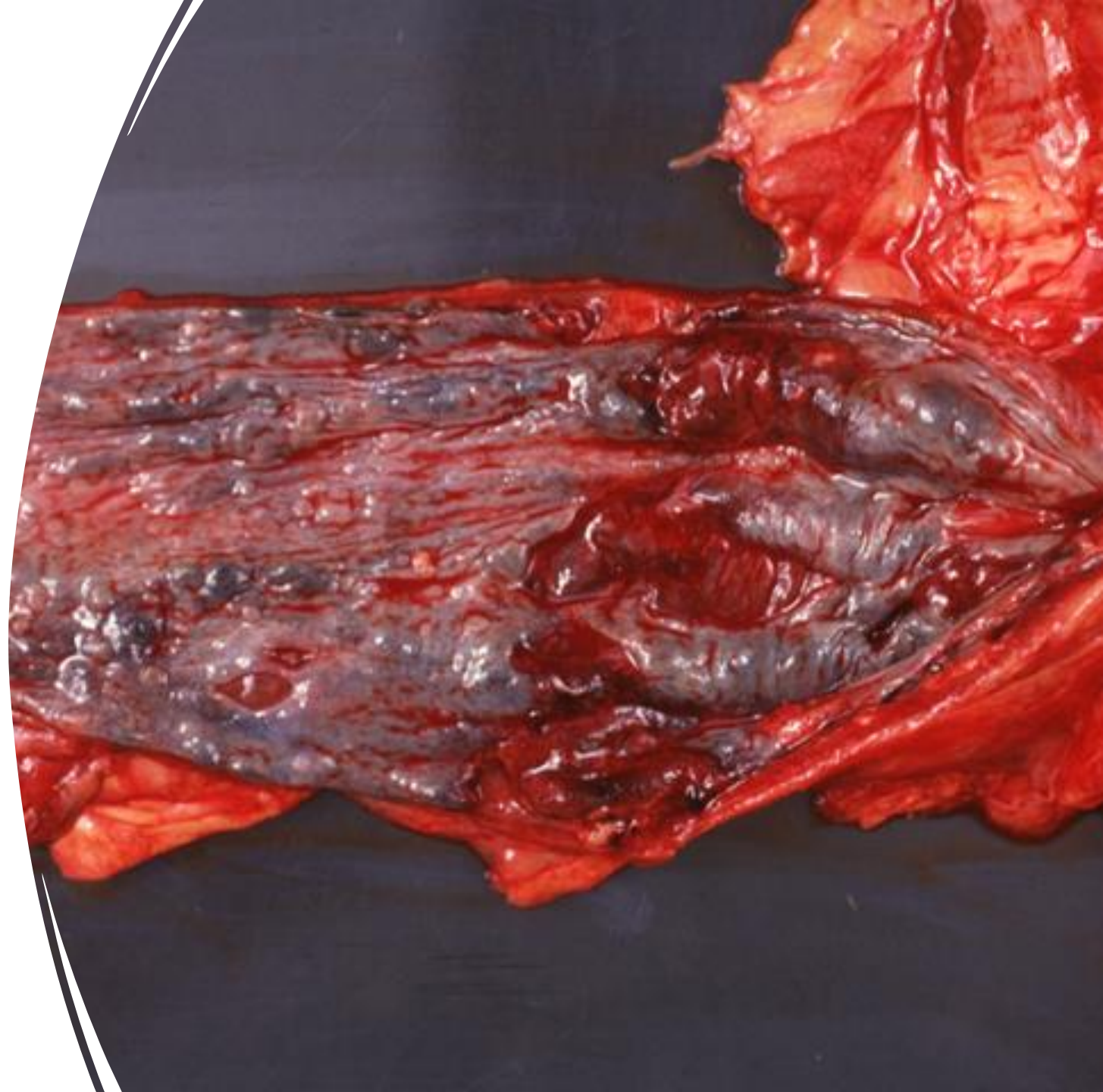
→ Barium swallow  
X-Ray follow up

Source: Longo DL, Fauci AS, Kasper DL, Hauser SL, Jameson JL, Loscalzo J: *Harrison's Principles of Internal Medicine, 18th Edition*: [www.accessmedicine.com](http://www.accessmedicine.com)  
Copyright © The McGraw-Hill Companies, Inc. All rights reserved.

# Esophageal varices

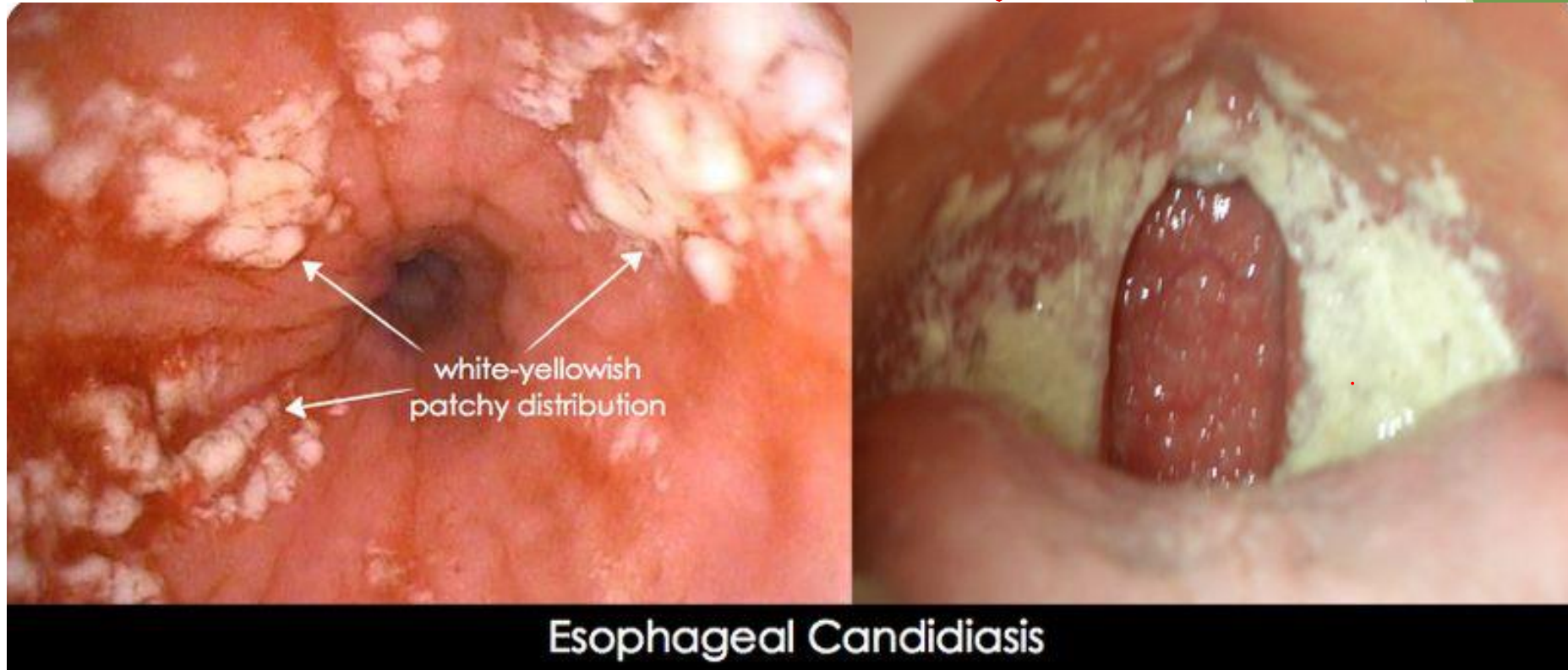
\* Patients come with hematemesis

\* Risk of rupture



# Esophageal candidiasis

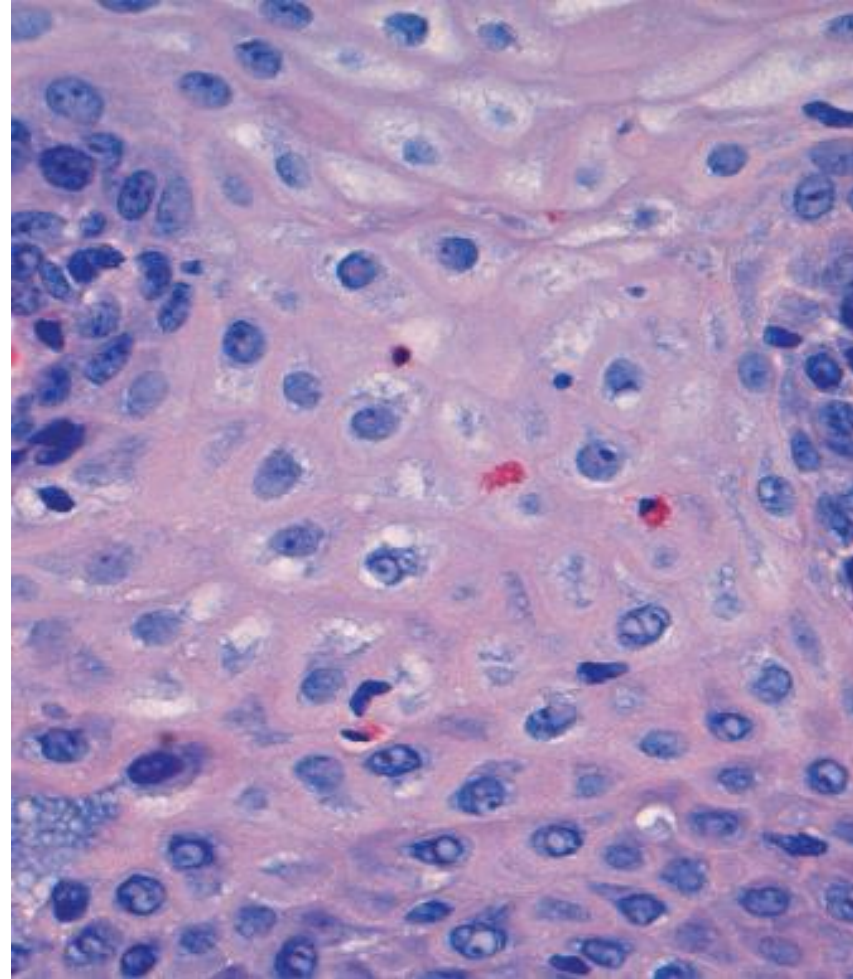
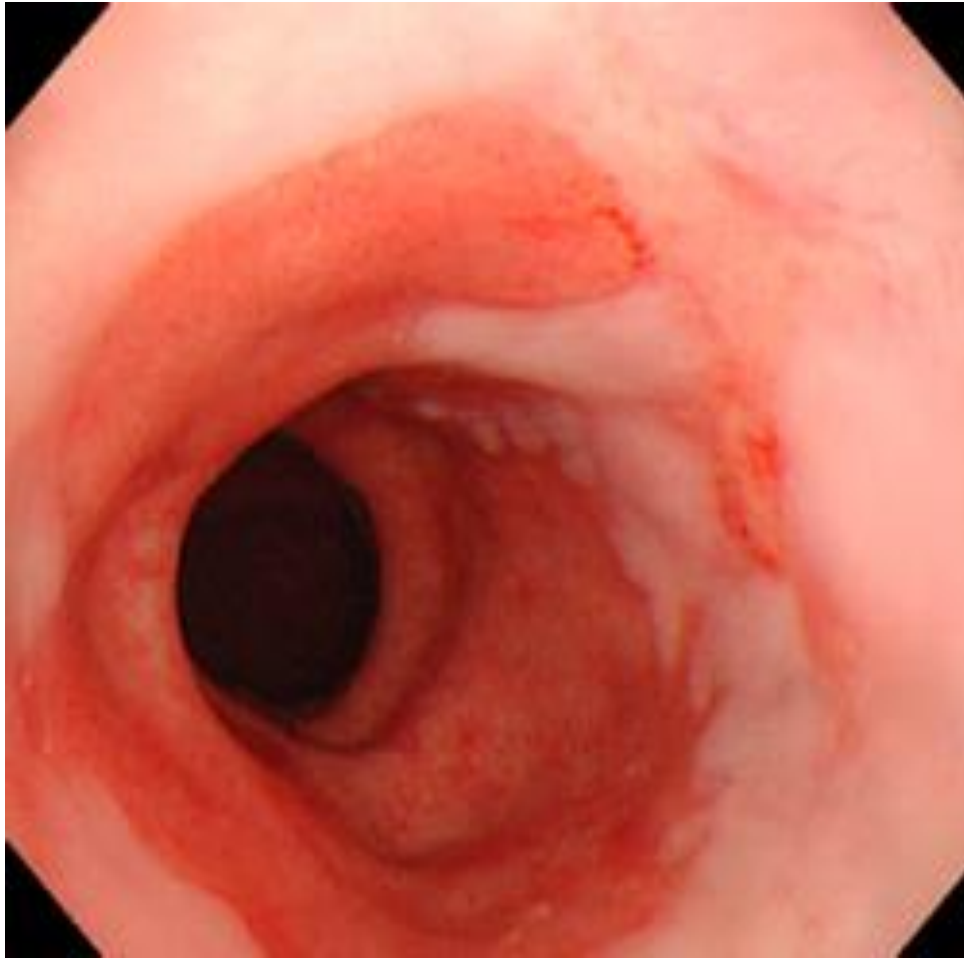
\*whitish \*oral thrush \*patient come with dysphagia



<https://www.pinterest.com/pin/374291419013418659/>

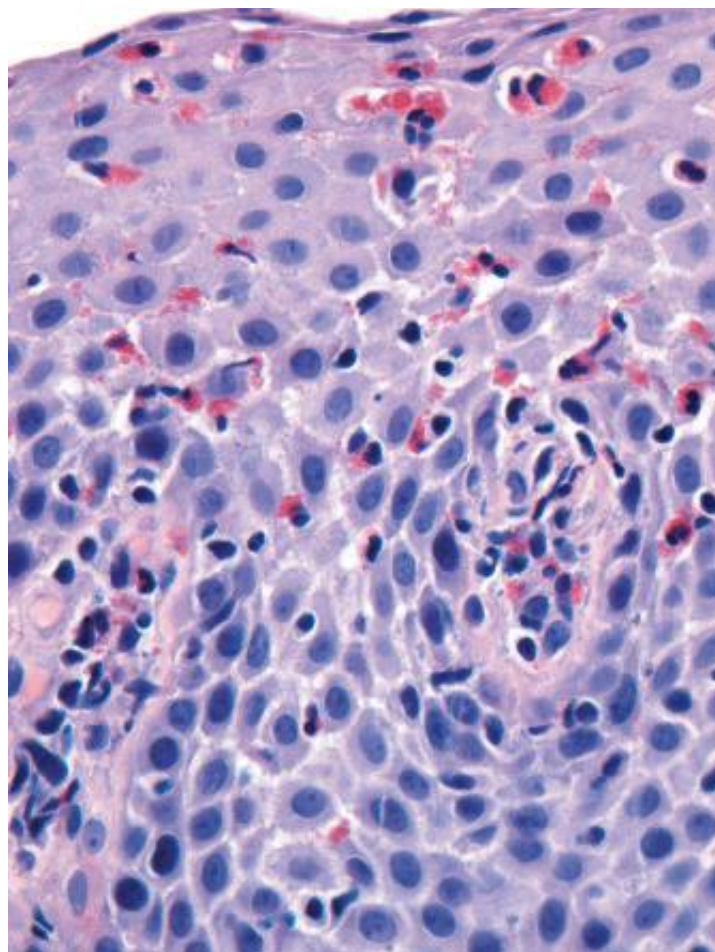


\*GERD disease.

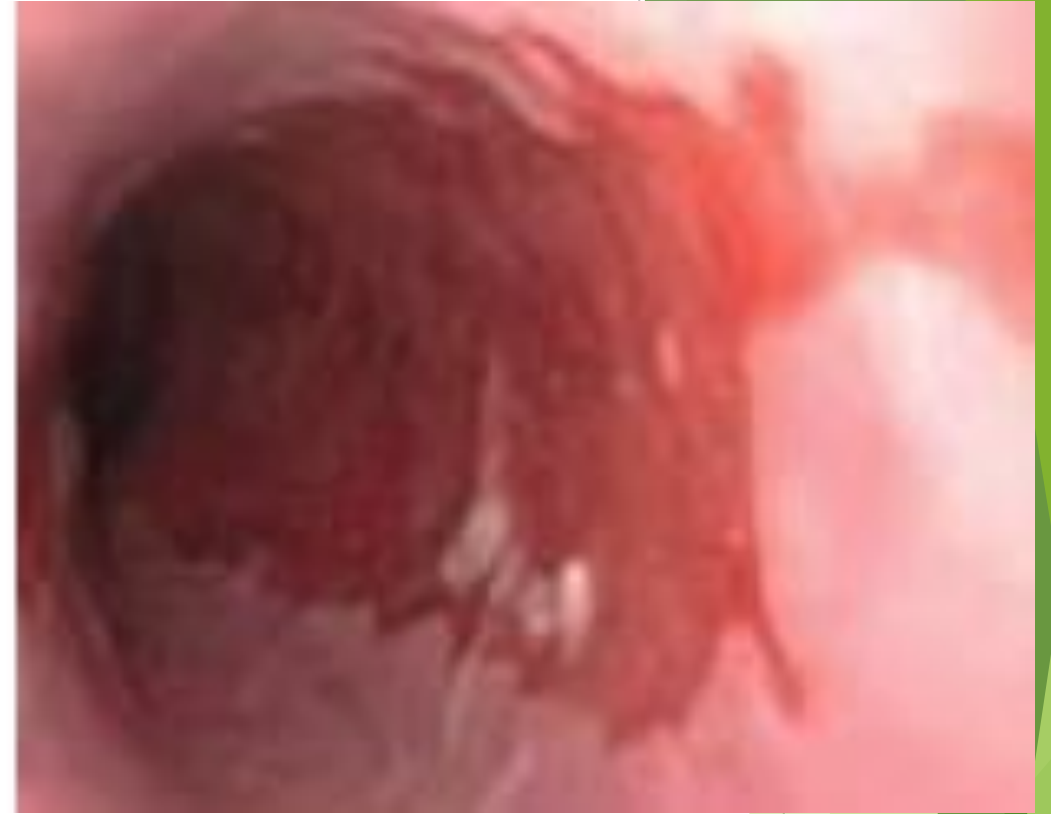
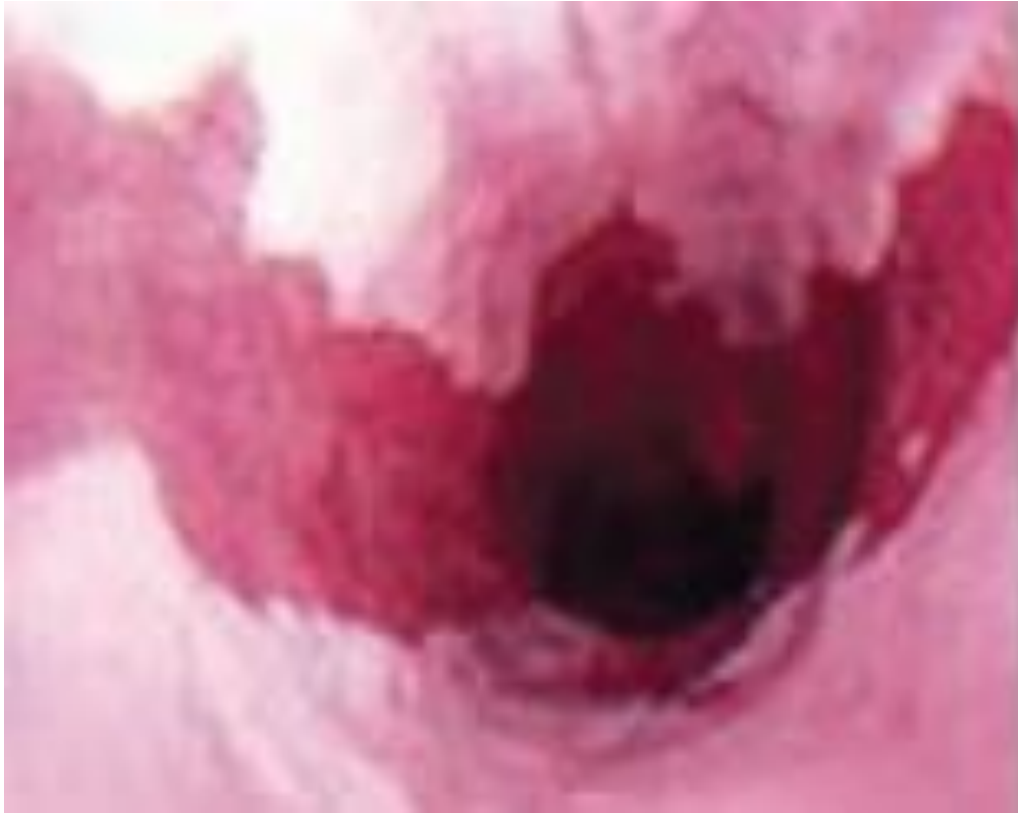


Reflux  
esophagitis

# Rings in eosinophilic esophagitis



- large amount  
of eosinophils



\* Red tongue

## Tongues in Barrett esophagus

\* one of GERD complication

\* Metaplasia

\* Direct causation of adenocarcinomas

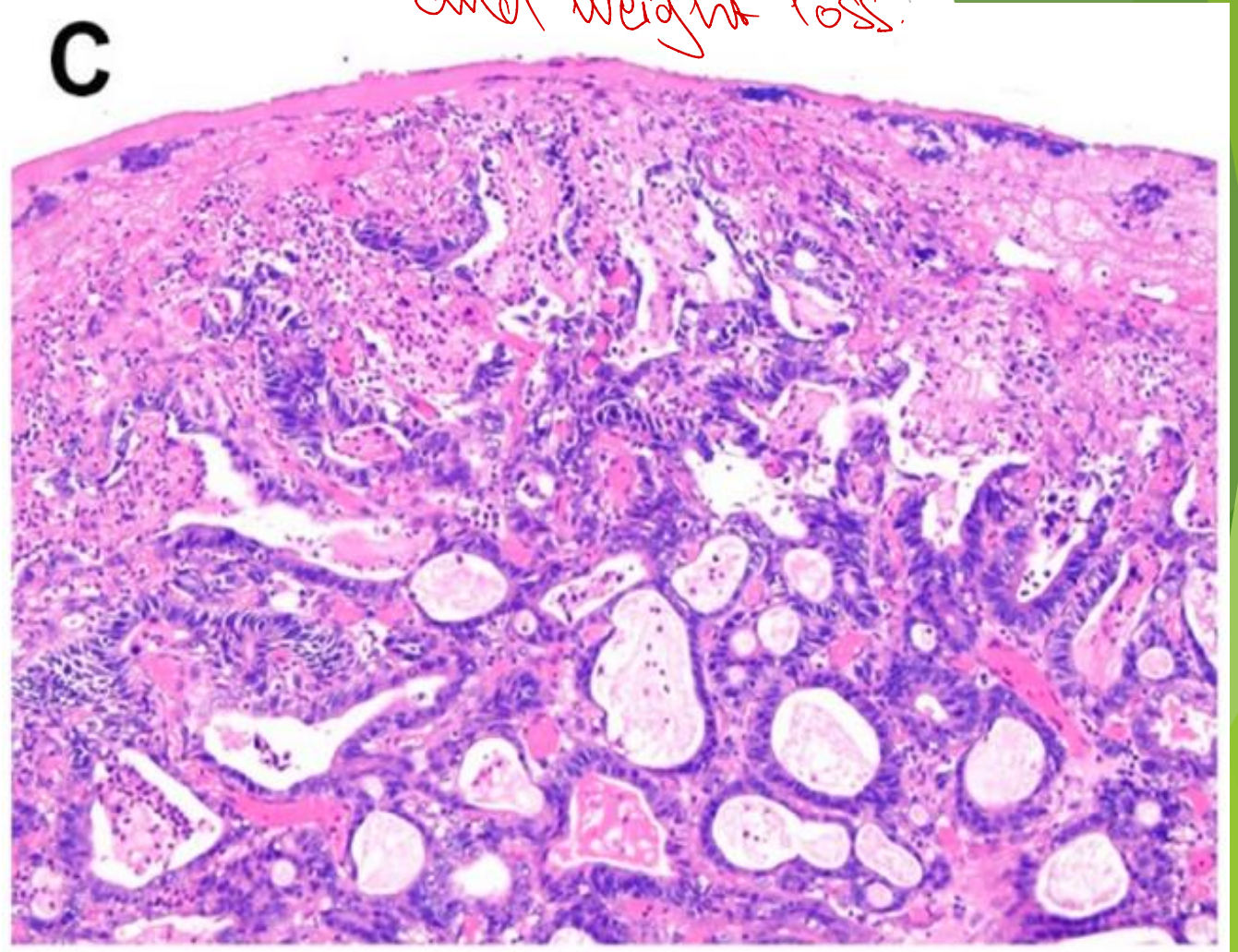


# Esophageal adenocarcinoma

\* in lower part of esophagus  
\* patient comes with dysphagia  
and weight loss.



Robbins Basic Pathology 10th edition





# Mid esophagus

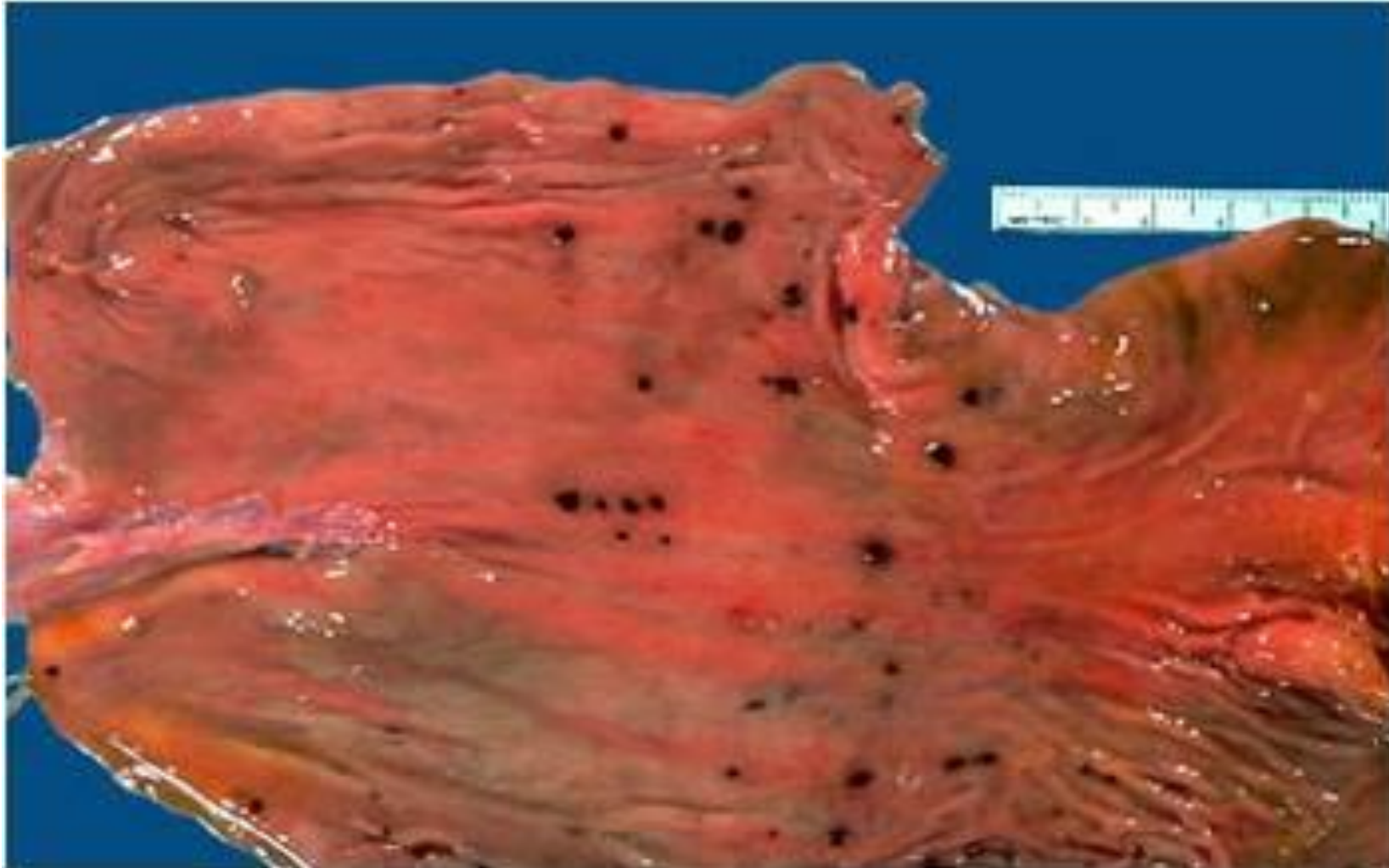


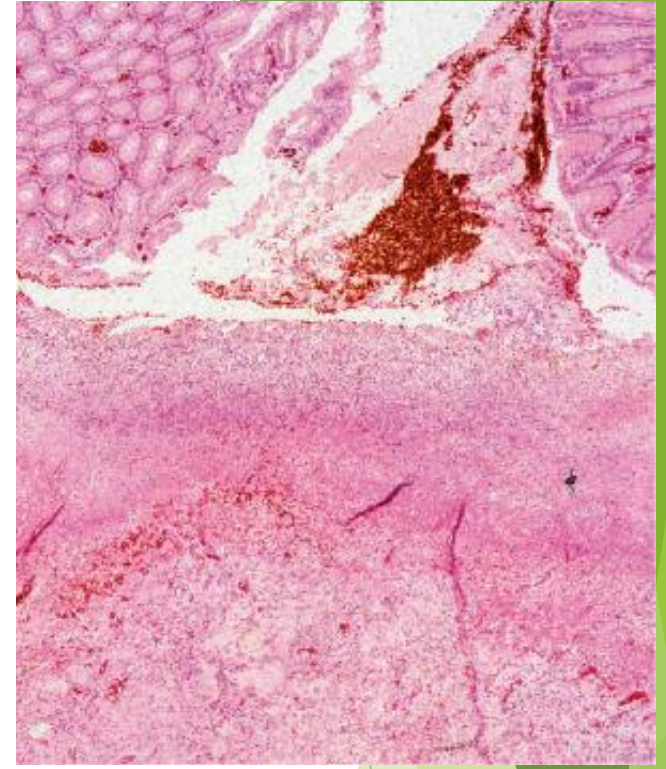
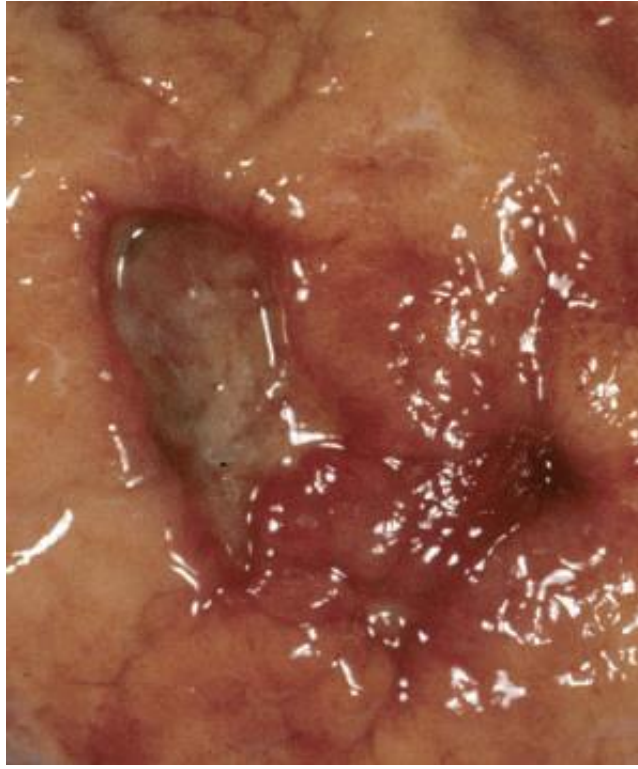
- ▶ Esophageal squamous cell carcinoma

# Stress gastric ulcers

\* multi ulcers

\* 1st stomach base





## Chronic gastric ulcers

- \* Single ulcer with white background
- \* Result from hyperacidity



# Duodenal ulcer

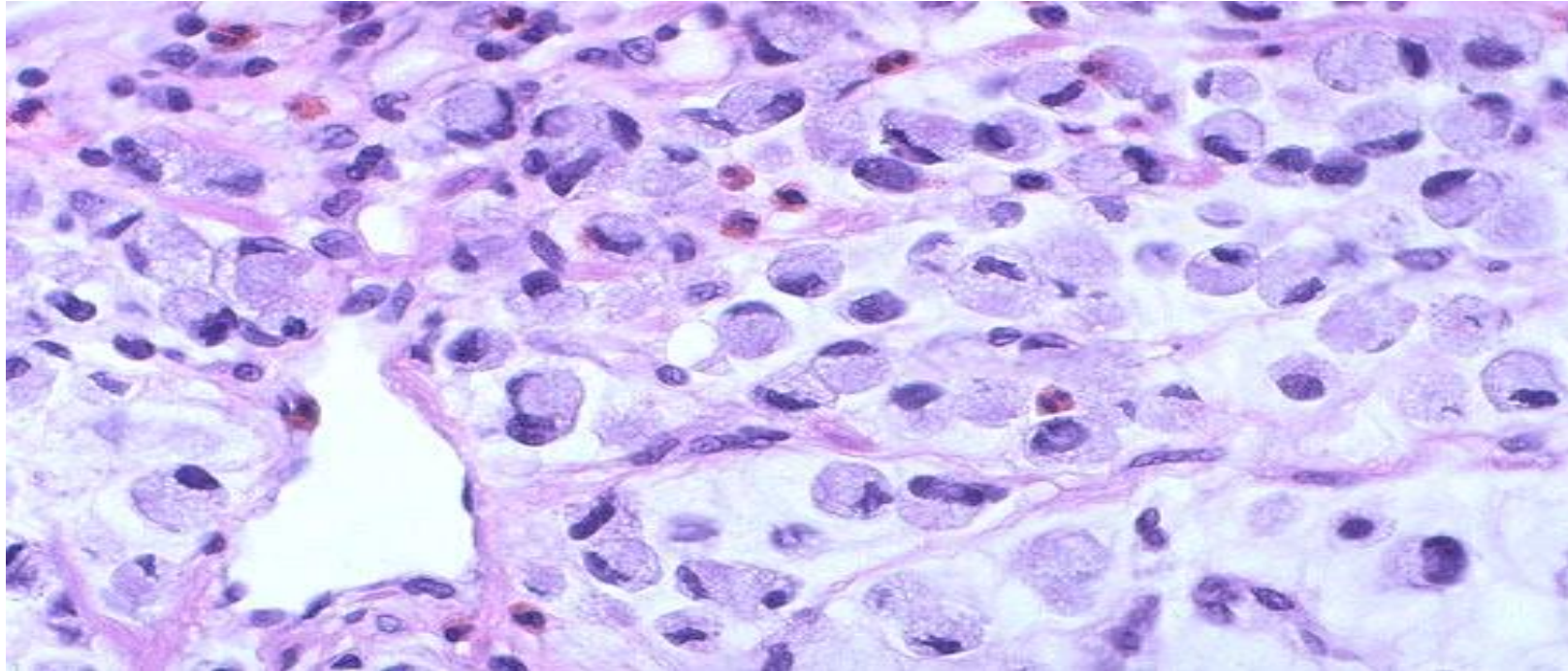
\* Always caused by H. pylori



- ▶ Diffuse type gastric cancer (linitis plastica)







Diffuse type, **signet ring cells**

↳ Most of Diffuse type  
of gastric cancer



# Meckel's diverticulum

\* Cause of lower GI bleeding  
\* Occurs in terminal ileum

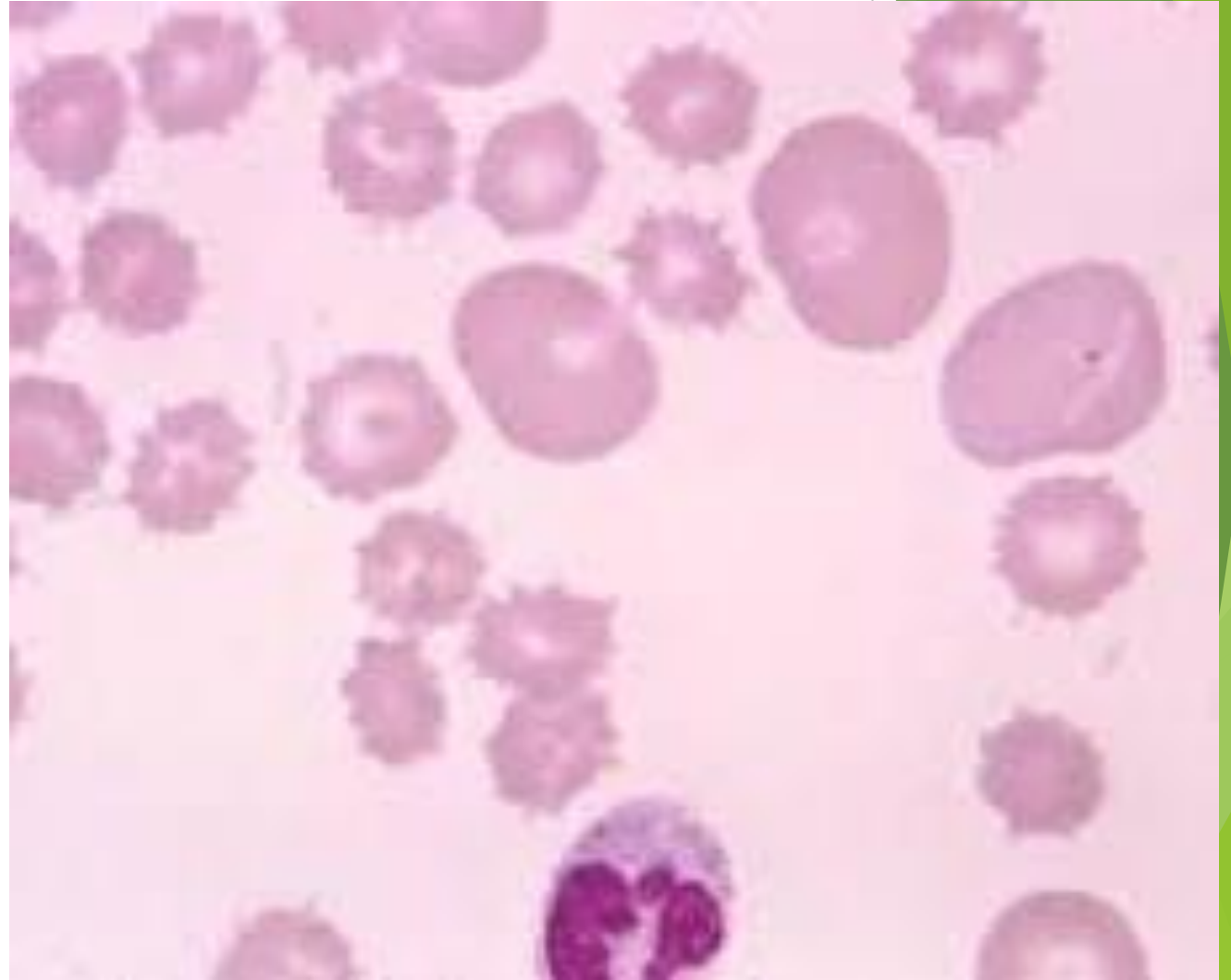


# Dermatitis herpetiformis with celiac disease.



\*under microscope  
we see villous atrophy

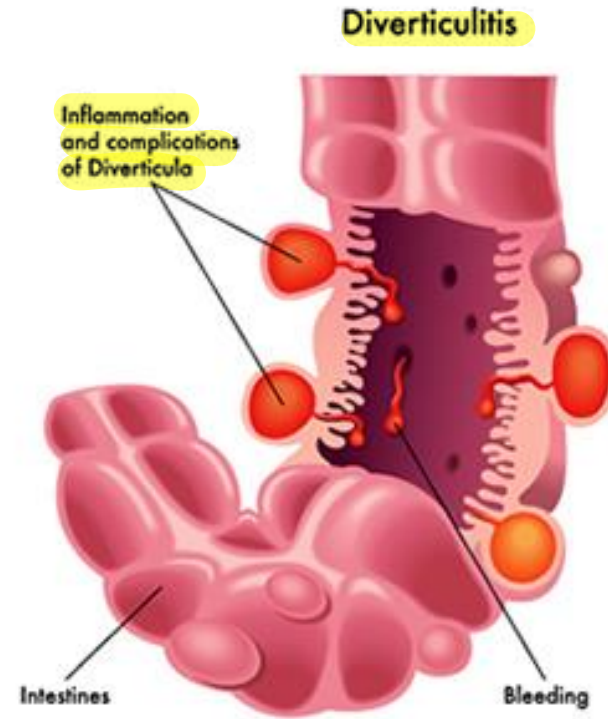
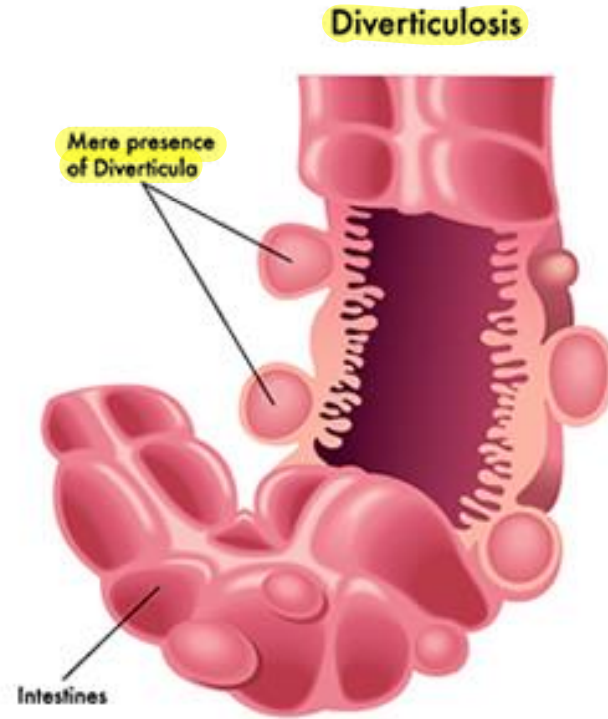
- ▶ Spur cells in abetalipoproteinemia



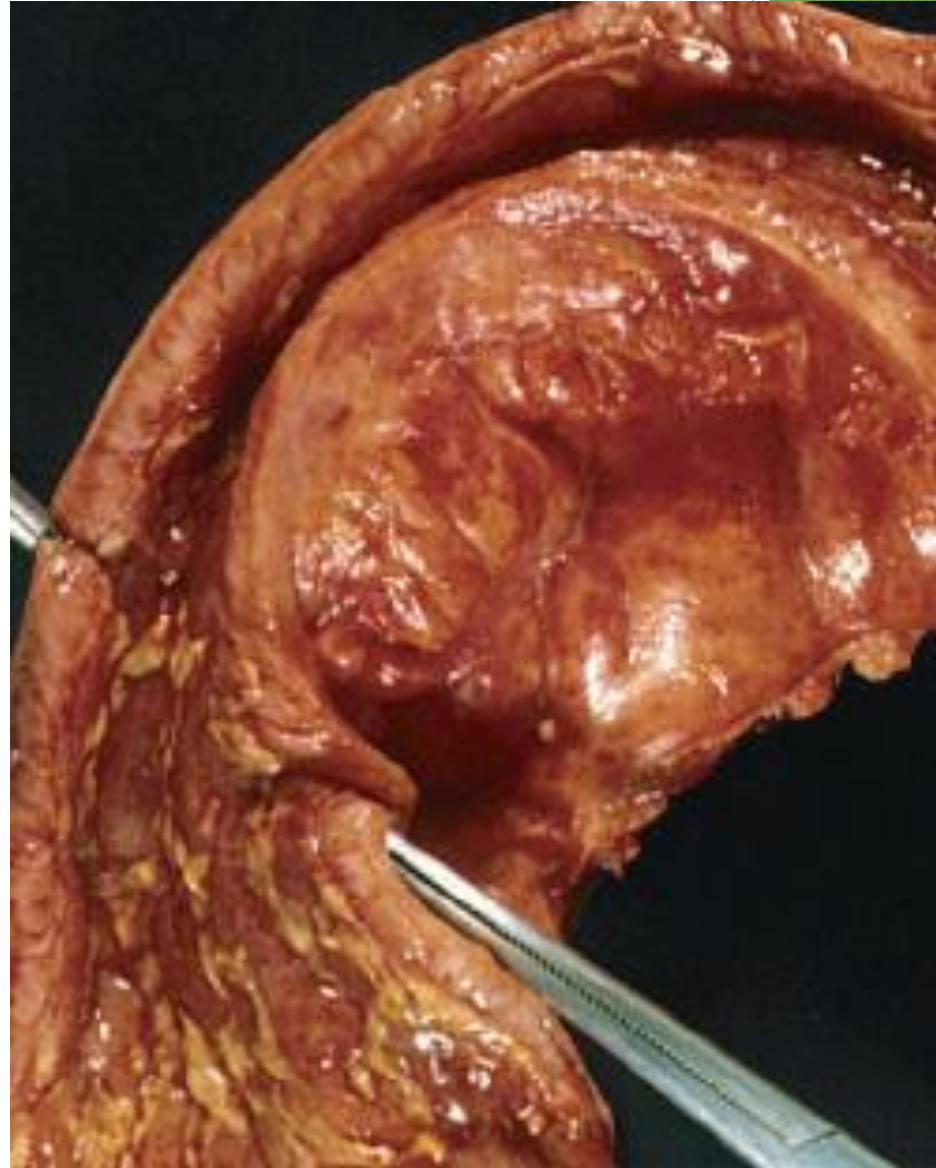


\*pseudo diverticulum

\*elderly patient with constipation



\* Small bowel stricture  
in chronic disease.



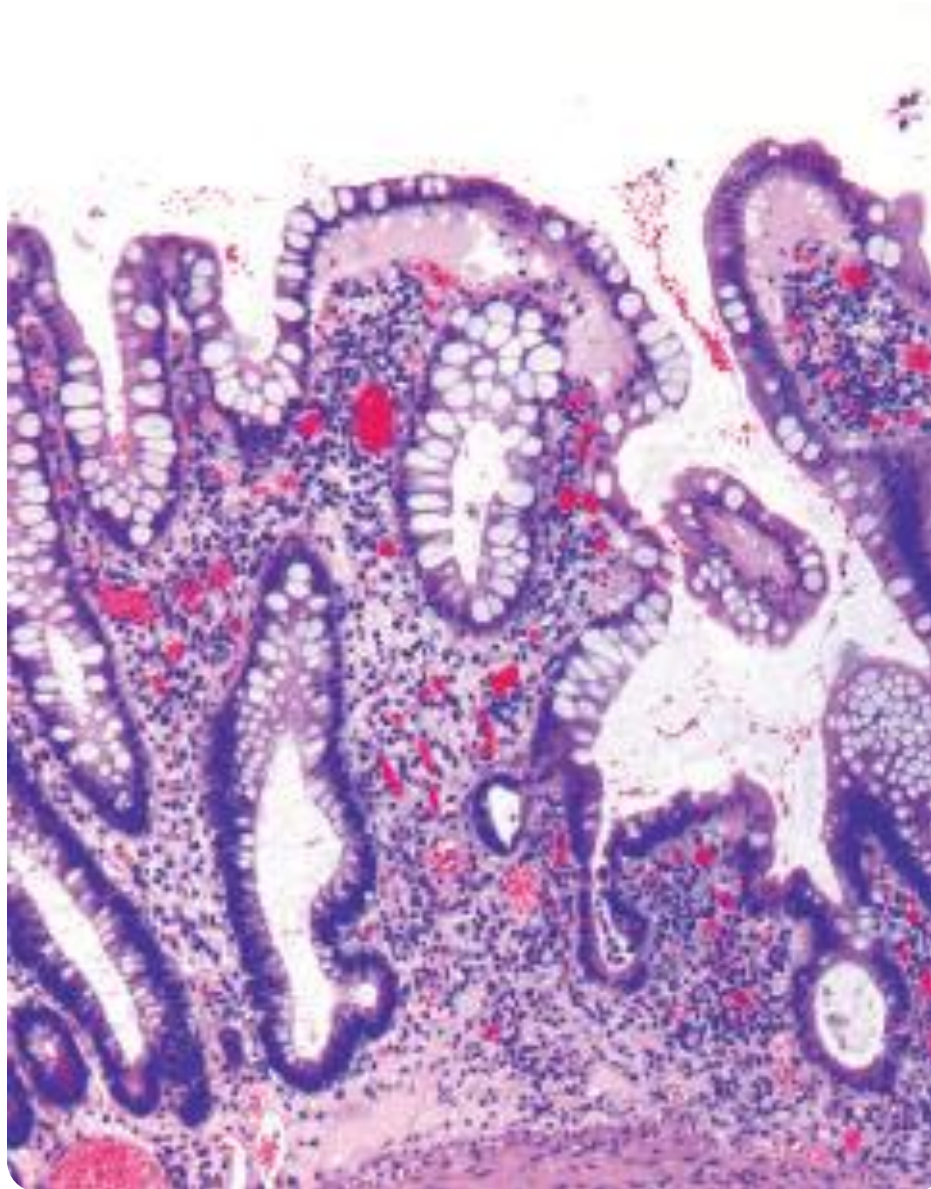


Cobblestone appearance



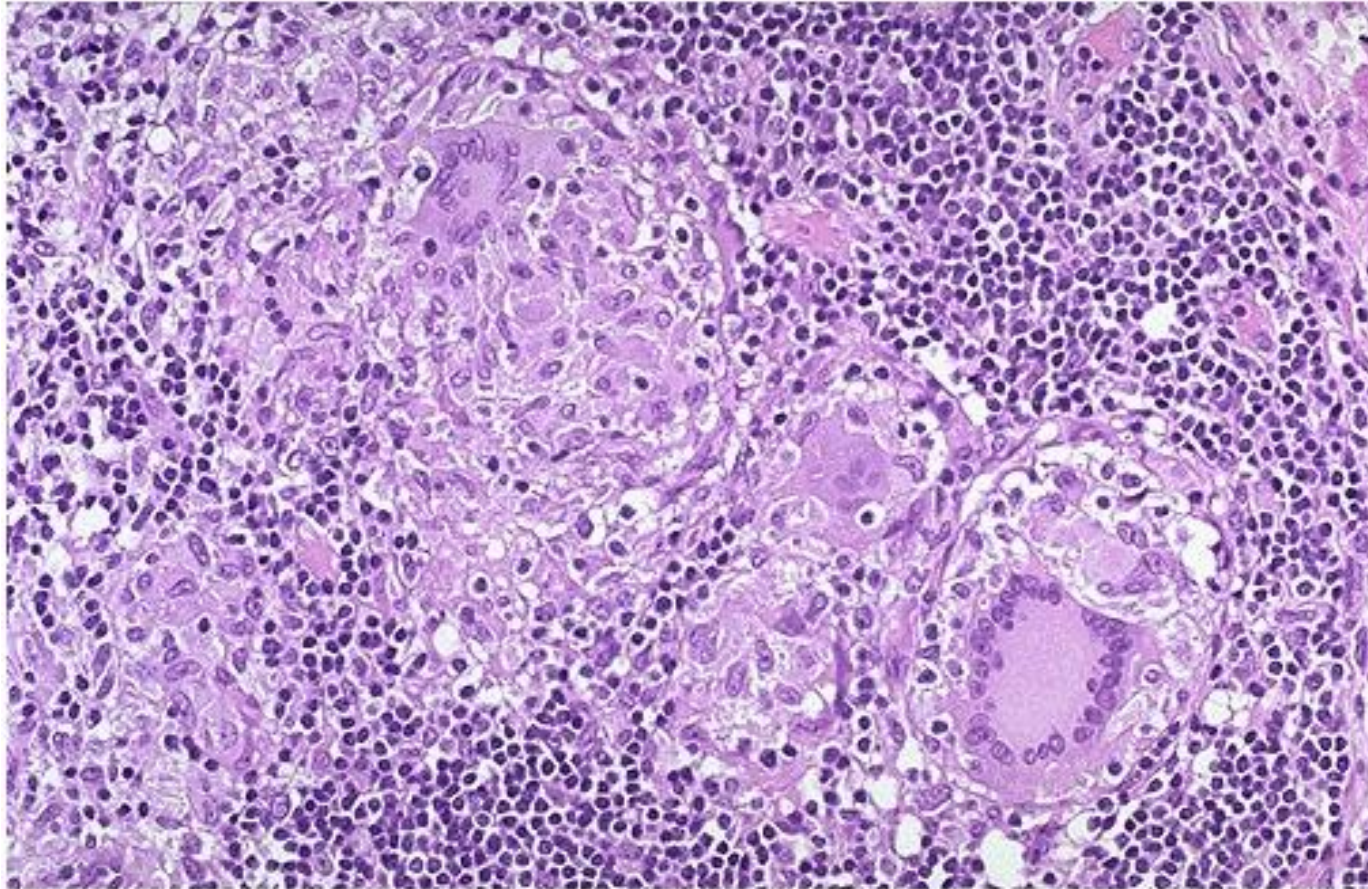
# Cobblestone appearance , Crohn disease





Haphazardly arranged  
crypts, CIBD





non-casating granuloma, Crohn disease.



# Erythema nodosum, Crohn disease

↳ extra intestinal  
reaction.



# Clubbing

---

- occurs in  
liver disease  
also



[Wikipedia](#)

Toxic megacolon  $\Rightarrow$  in UC.  
dilation of the distal parts of colon





## Pancolitis.

↳ UC that involve  
whole colon



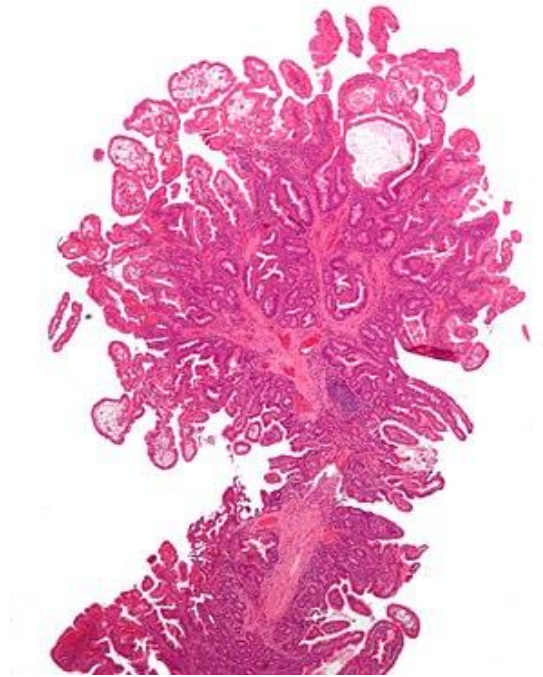
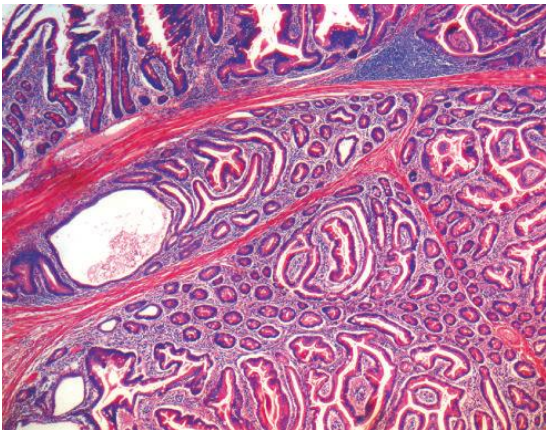
Abrupt transition b/w normal and disease segment, ulcerative colitis.

← Normal mucosa



abnormal  
folds

# Peutz-Jeghers polyp



- ▶ Christmas tree pattern.



\* موكوتاني ليجيا

# Mucocutaneous pigmentation, Peutz Jegher syndrome



- ▶ Familial adenomatous polyposis

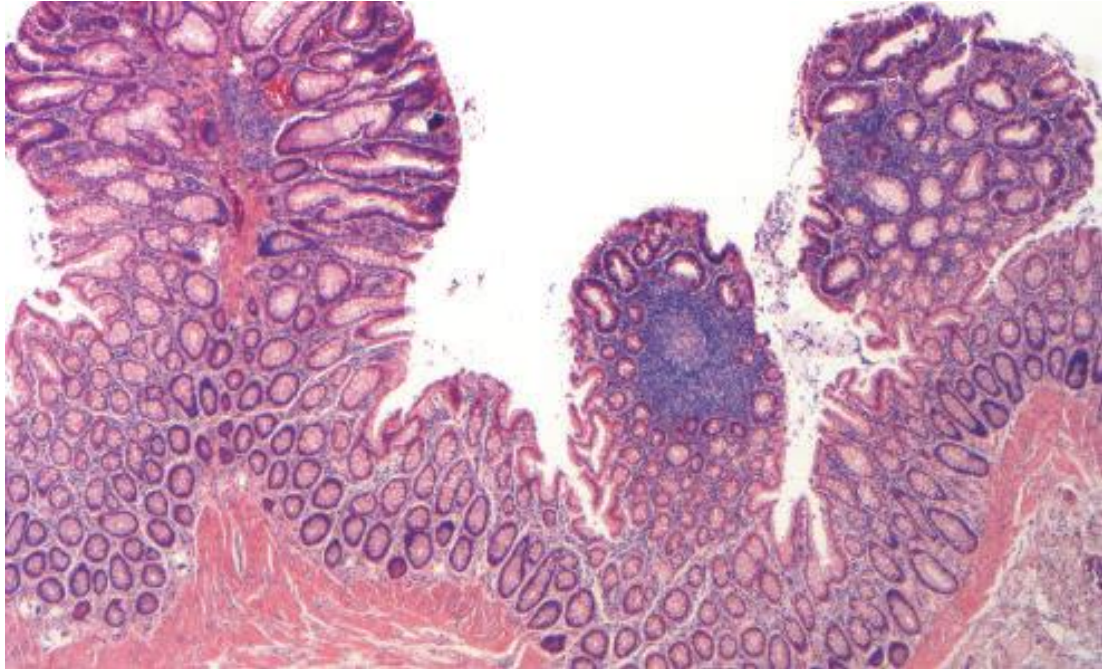
FAP

\* More than 100 polyps

\* Mutation in APC gene





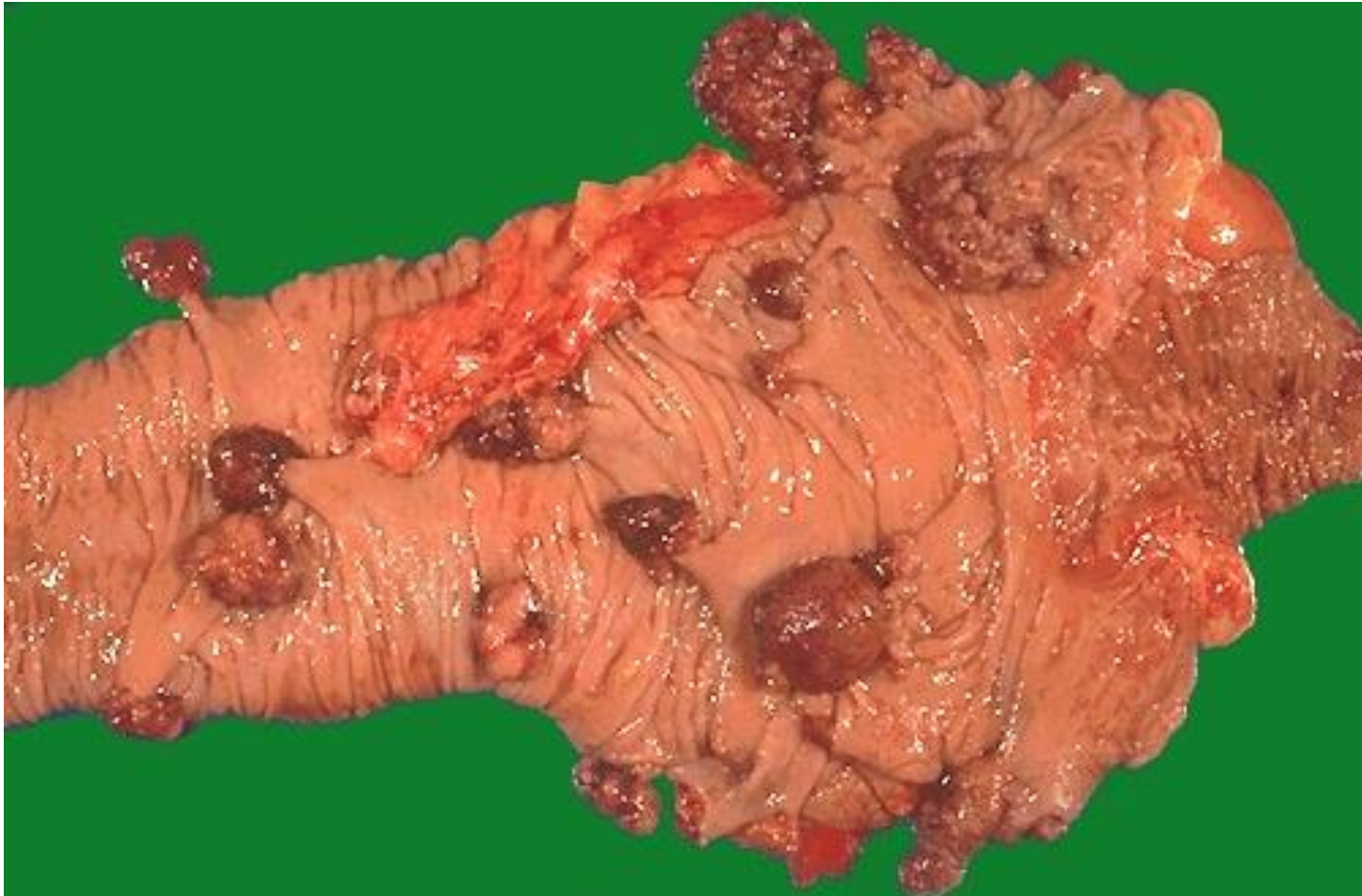


▶ FAP



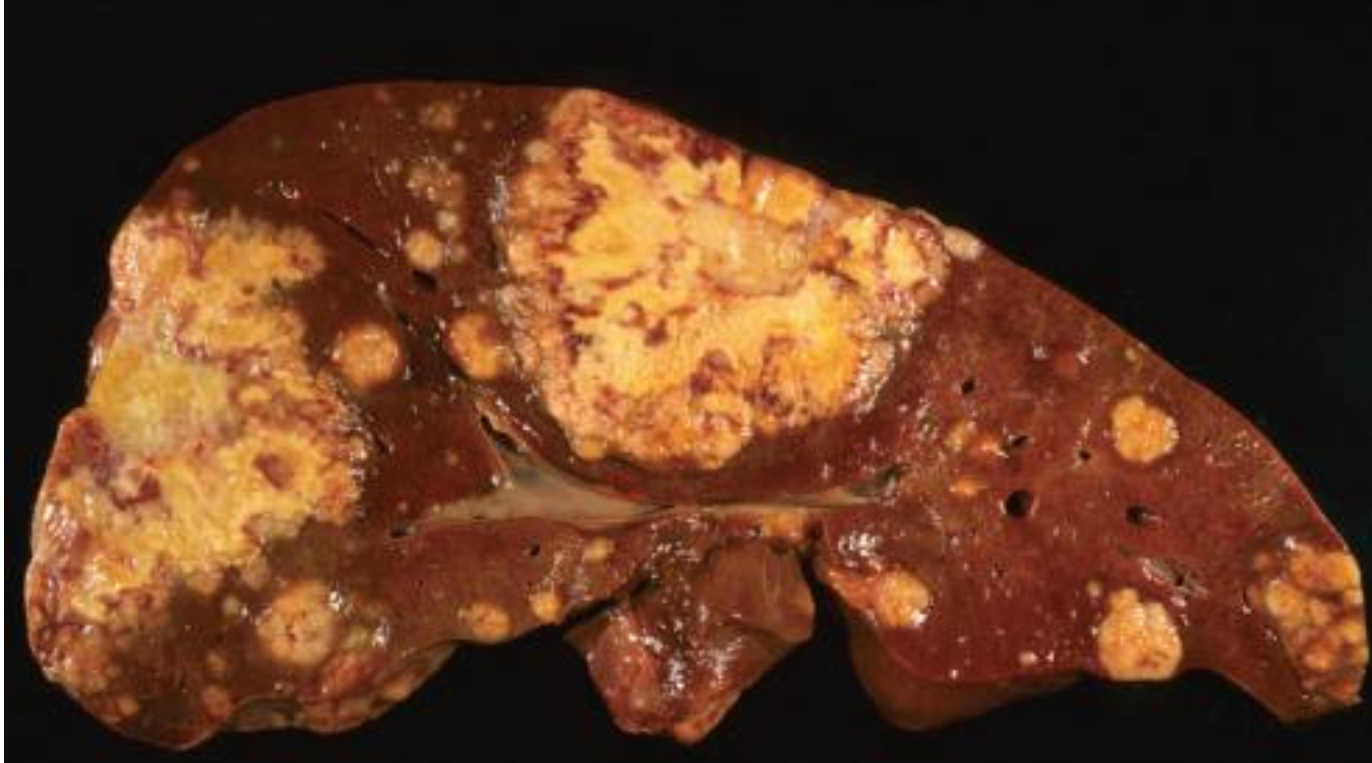
# Cecal polyps in HNPCC.

- less polyps \* microsatellite instability



# Exophytic adenocarcinoma, colon





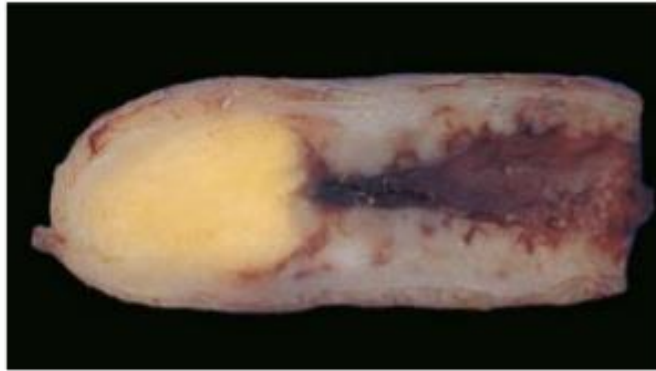
Liver metastasis from colon cancer.

*\* multiple nodules*

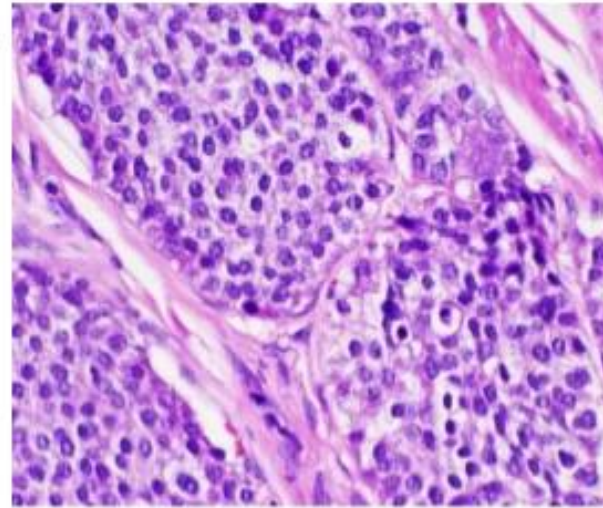


\*سنگی

# Carcinoid tumor



Gross



Microscopic

► Appendix

basal tip of appendix