

The fourth practical lab of the 3rd week Sun 11/04

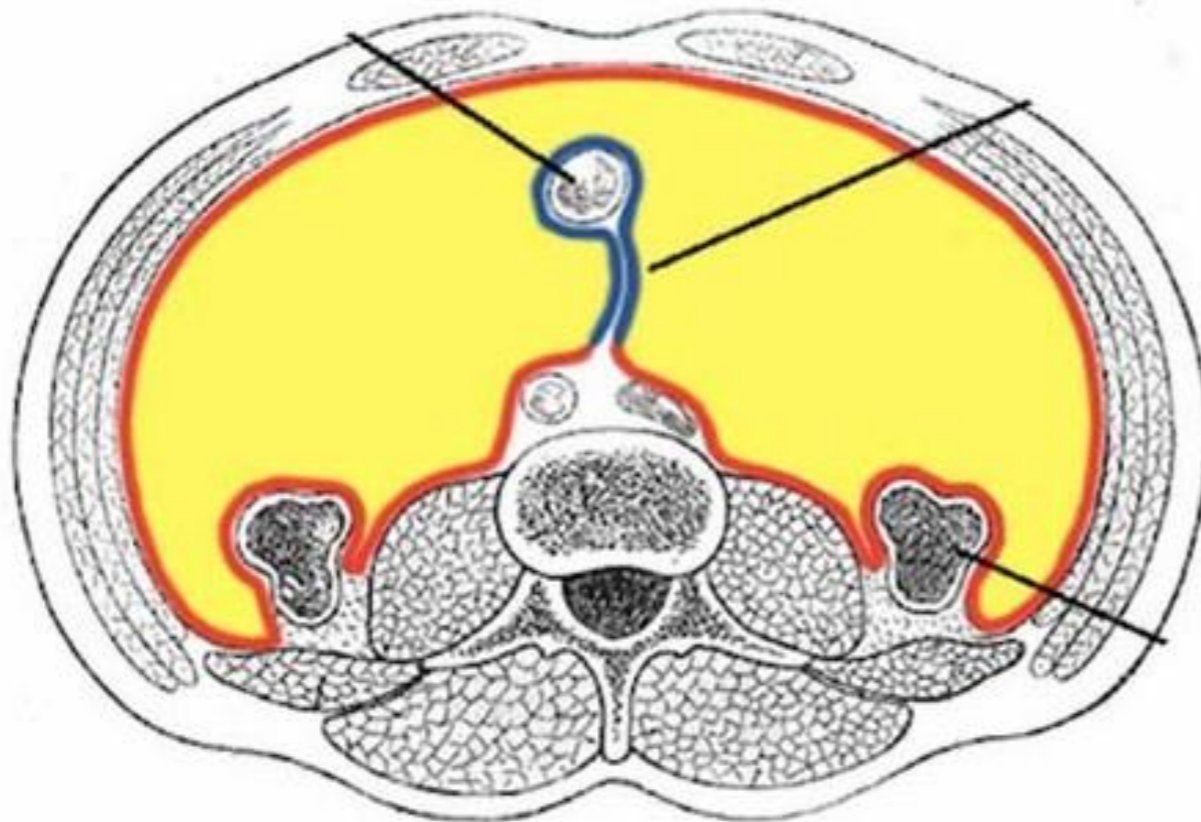
- 1. The Peritoneum.**
- 2. Stomach**
- 3. Duodenum**
- 4. Jejunum and Ileum**

✦ The Peritoneum.

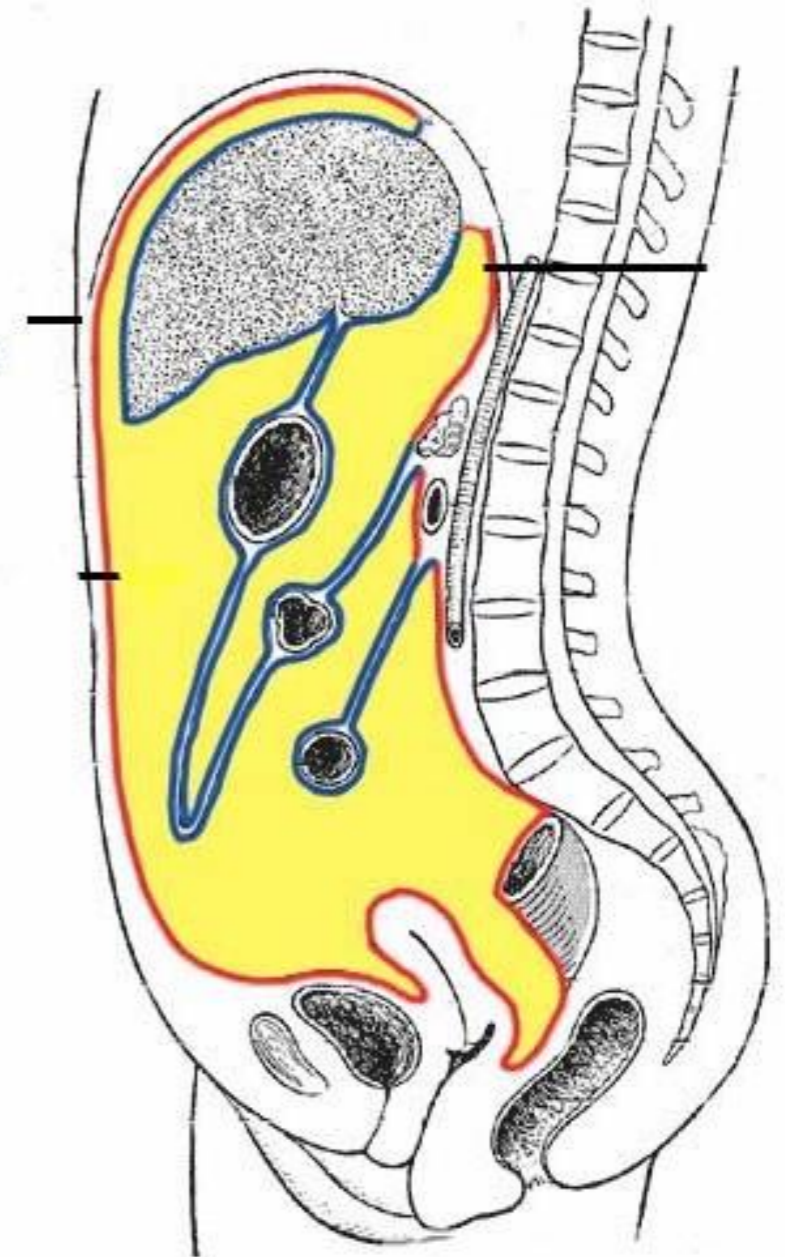
- The students should know and identify the :
 1. Parietal peritoneum
 2. Visceral peritoneum
 3. The relationship between viscera and peritoneum
 4. The peritoneal reflection :
(omenta, mesentery and ligaments)

1. Parietal peritoneum

- The students should know the following :
 1. It line the Ant. Abdominal wall.
 2. covers the pelvic viscera
 3. line the diaphragm superiorly
 4. line and attached to post Abdominal wall

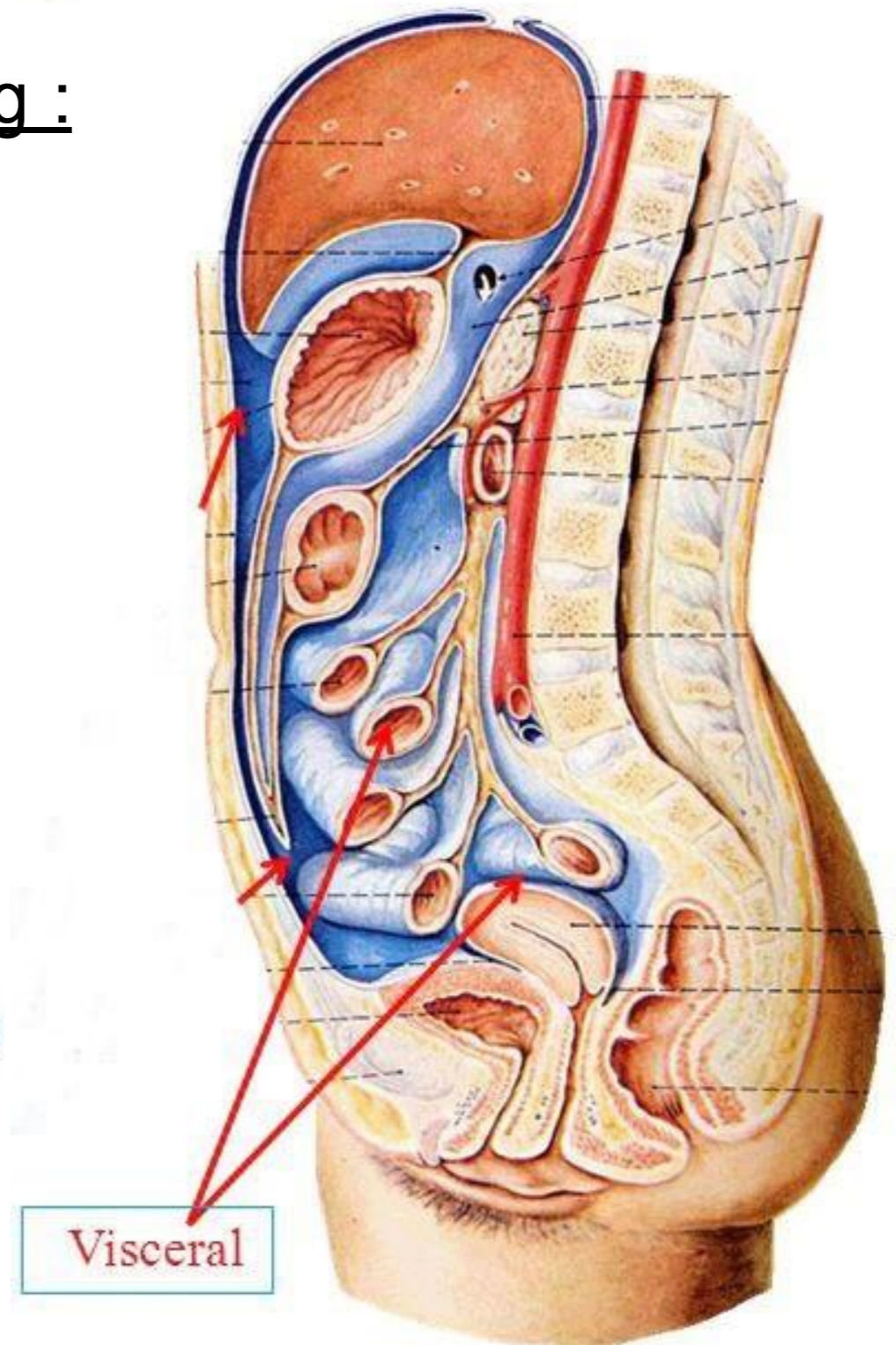
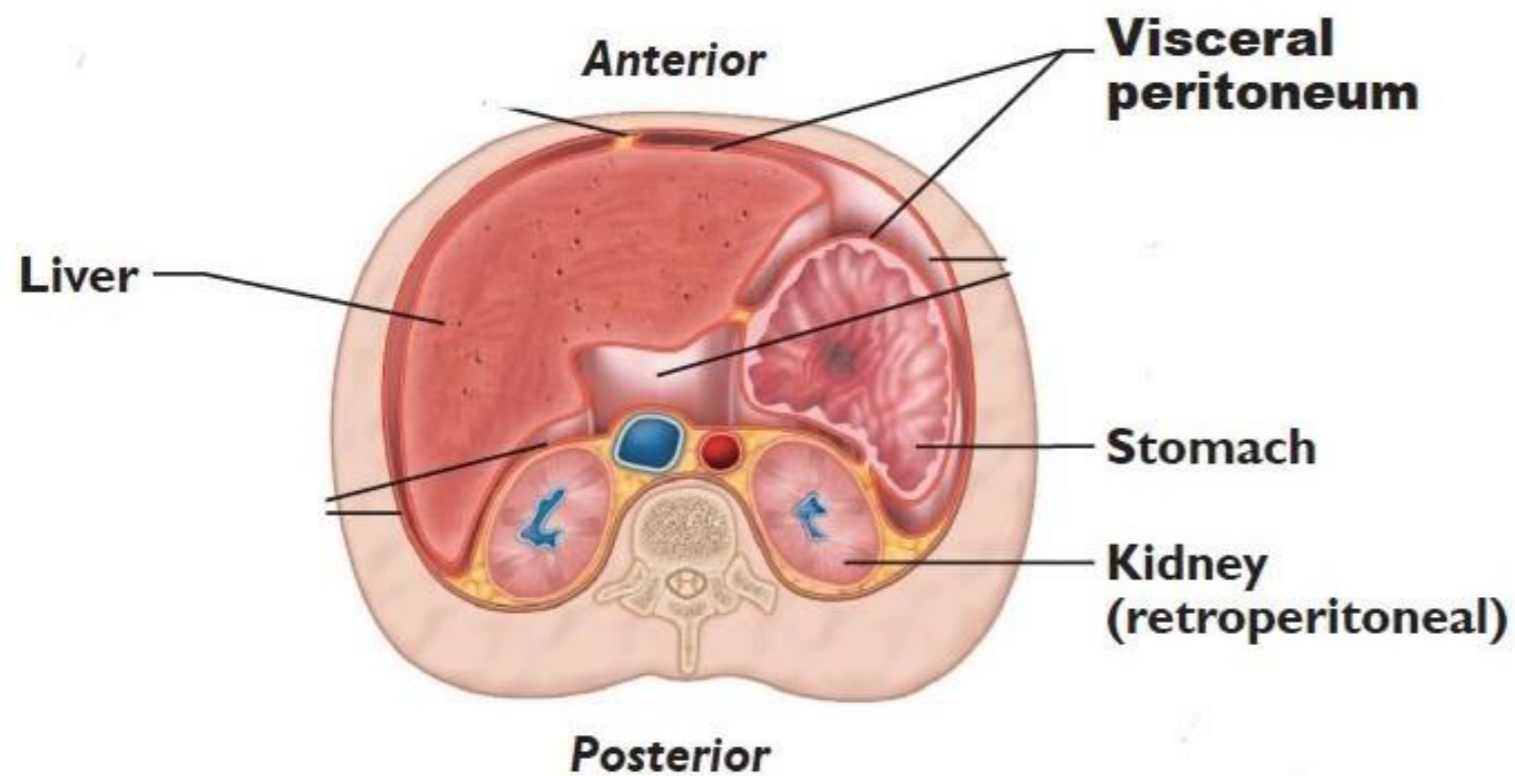


Parietal Peritoneum



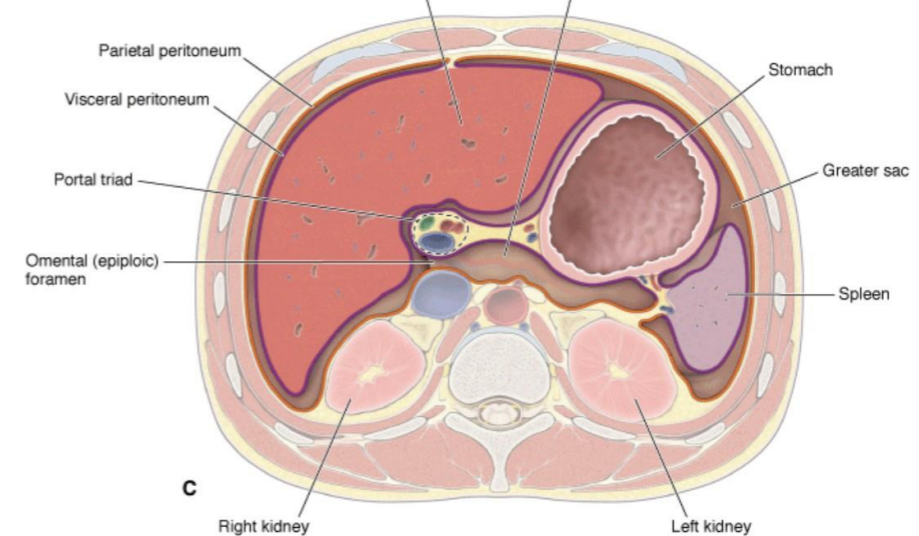
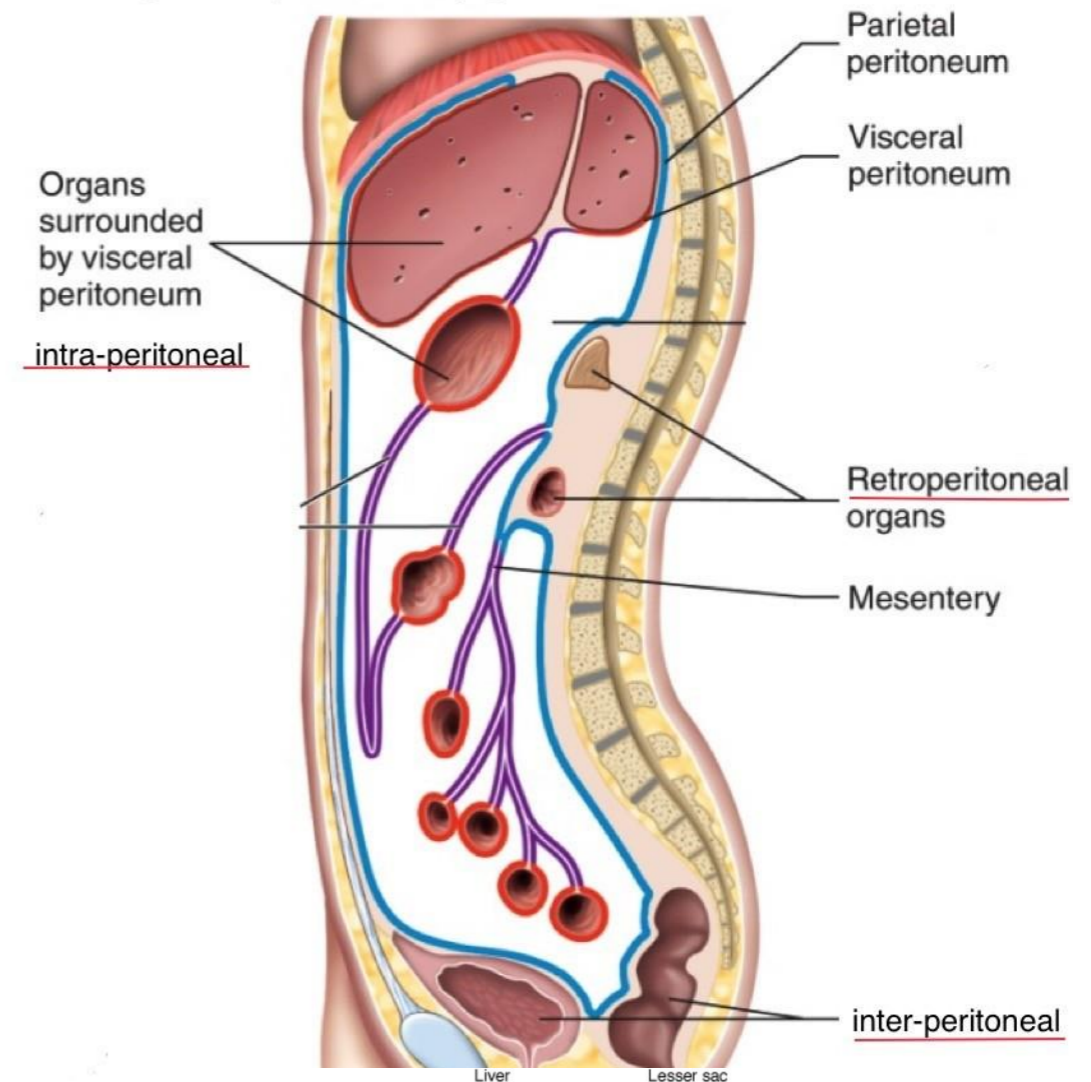
2. Visceral peritoneum

- The students should know the following :
 1. it cover the abdominal viscera



3. The relationship between viscera and peritoneum

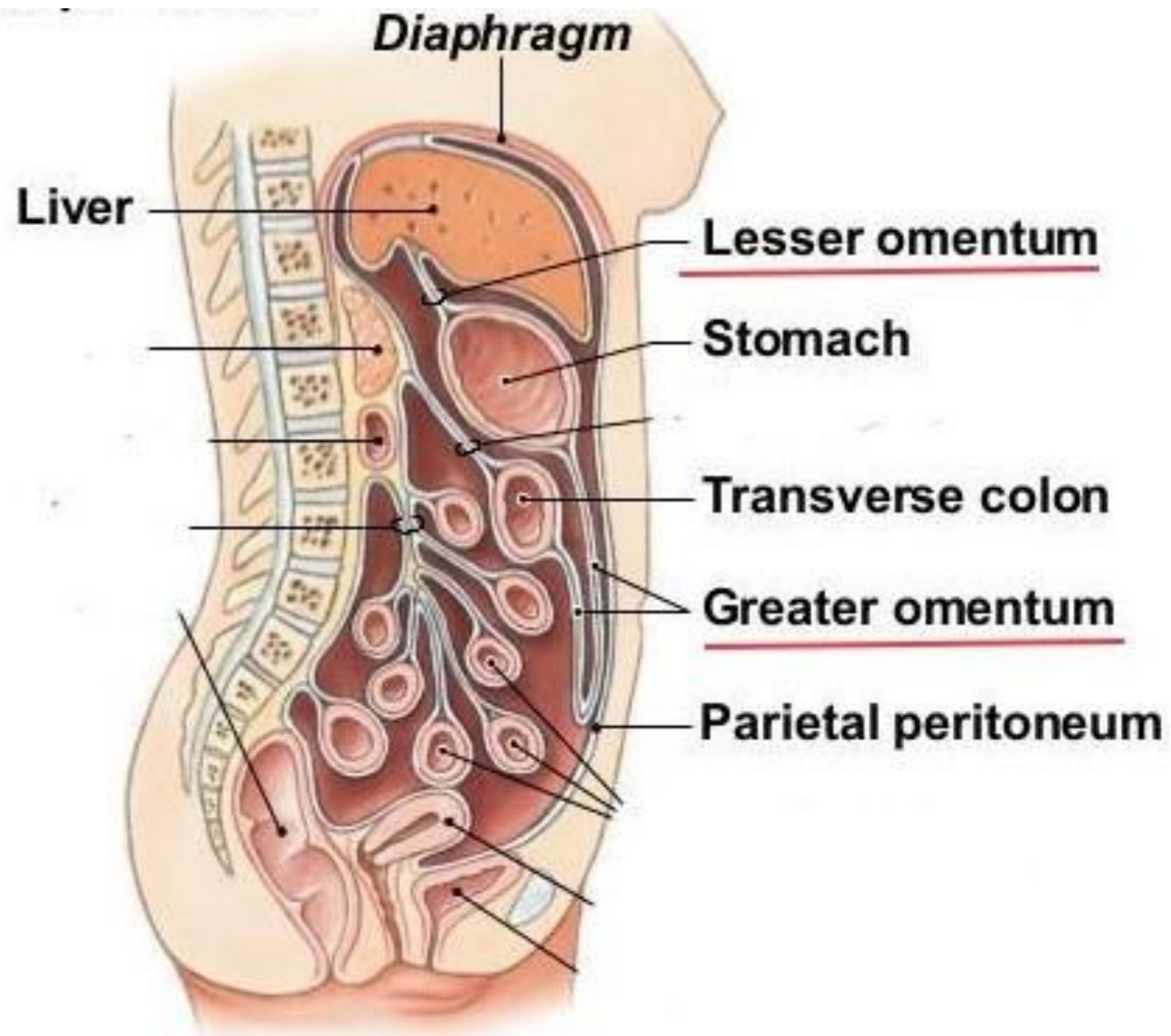
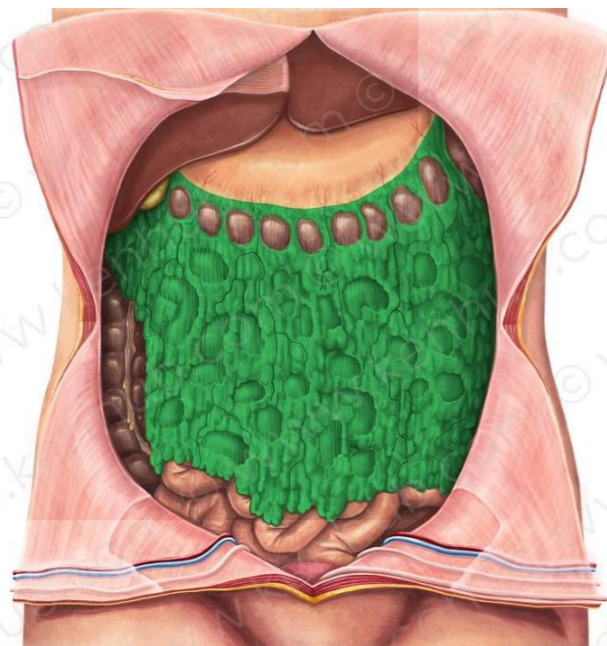
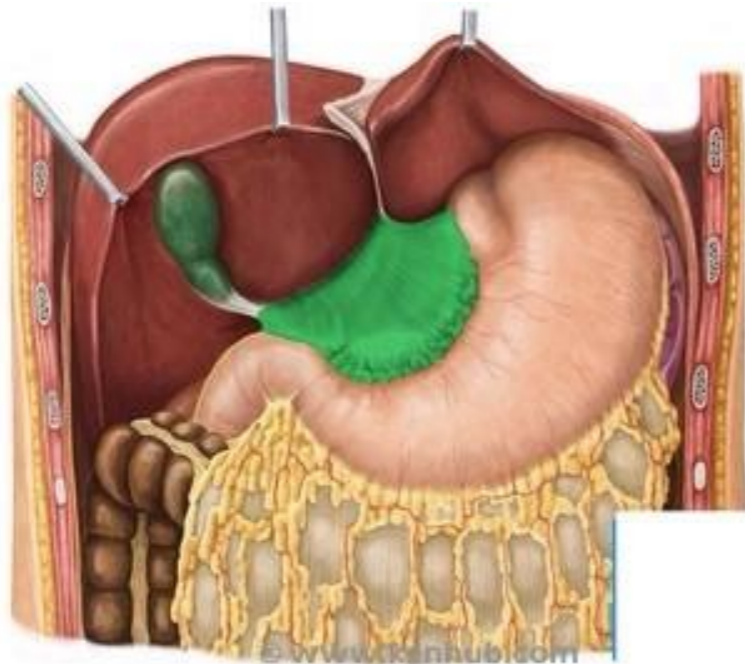
- The relationship between viscera and peritoneum classified as :
 1. Intraperitoneal viscera
 - example: stomach, jejunum, ileum
 2. Retroperitoneal viscera
 - example: kidney, pancreas
 3. Interperitoneal viscera
 - example: liver, gallbladder, urinary bladder



4. The peritoneal reflection

A. Omenta

- The students should observe the following :
 1. Attachment and content of Lesser omentum
 2. Attachment and content of Greater omentum



4. The peritoneal reflection

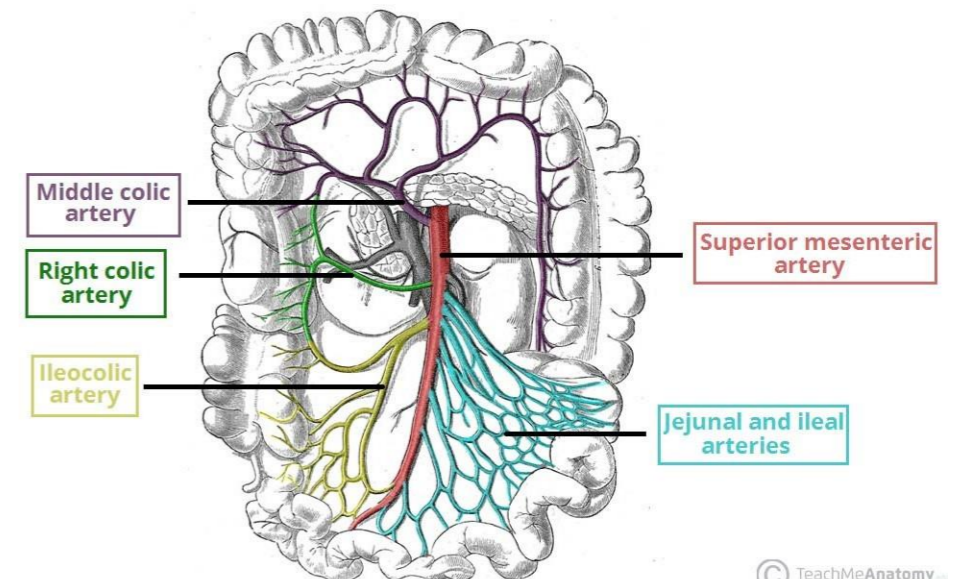
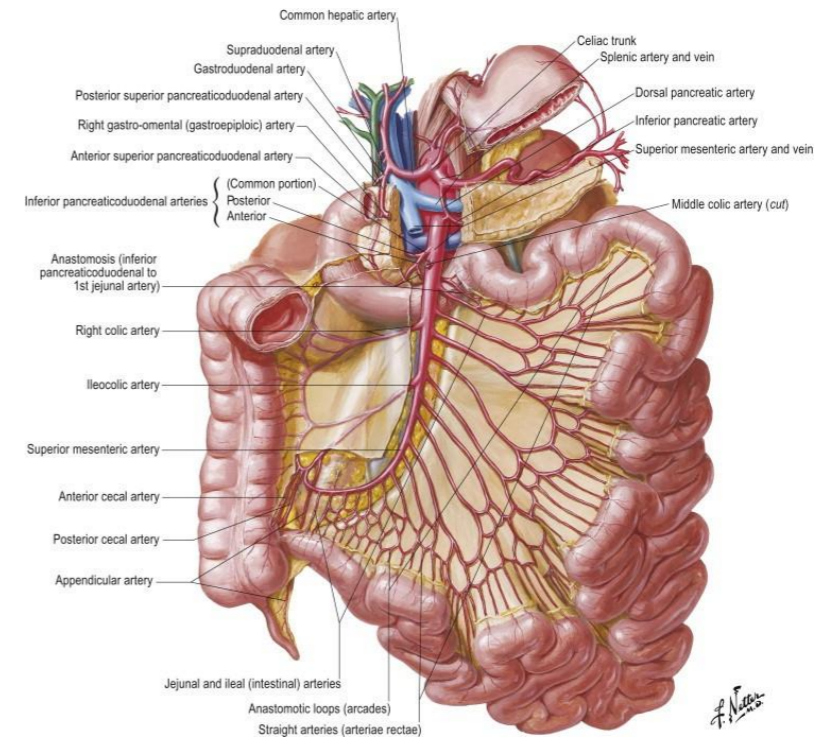
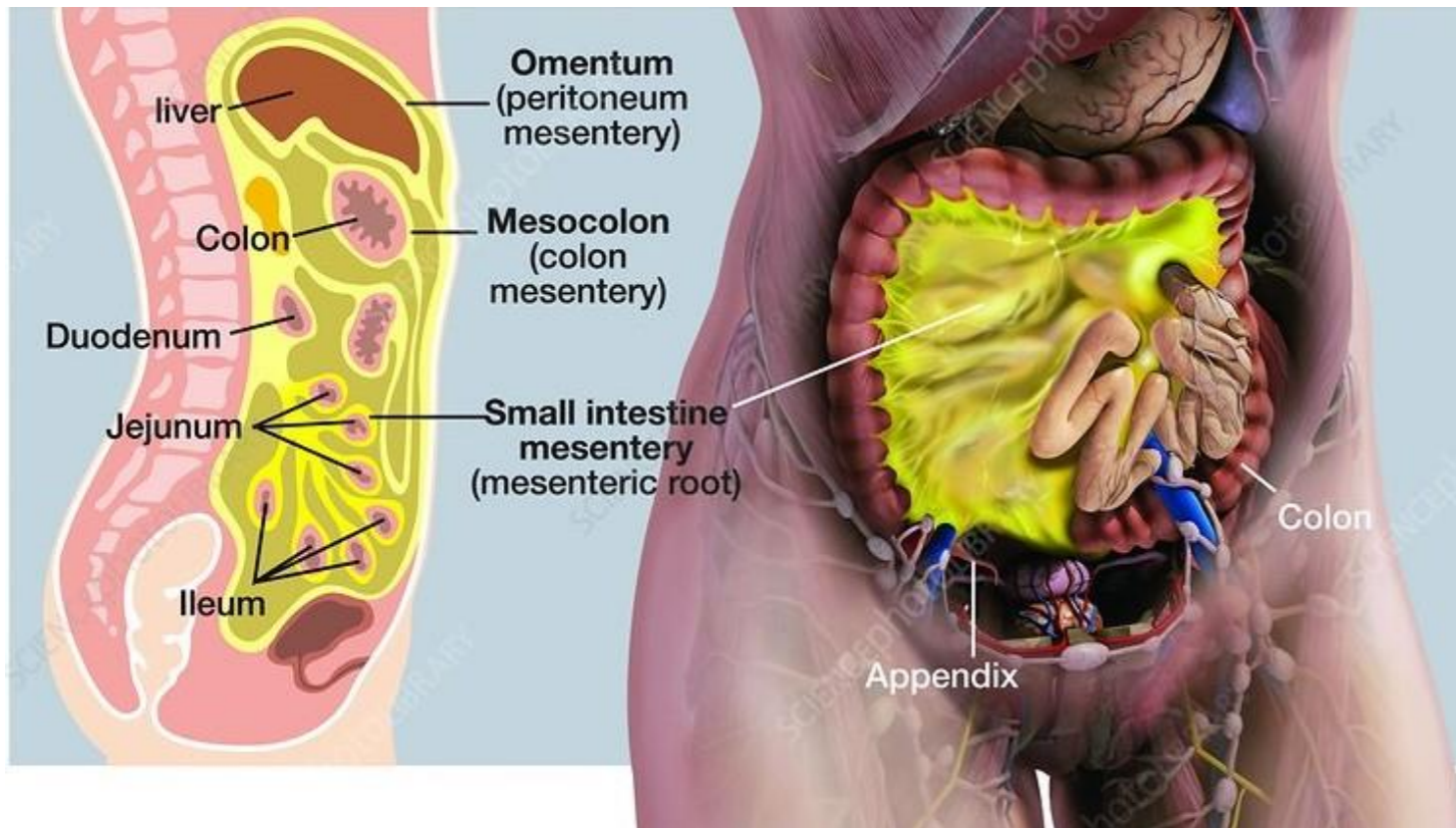
B. Mesentery

- The students should observe the following :
 1. Attachment and content of Mesentery of small intestine
 2. Attachment and content of Mesoappendix
 3. Attachment and content of Mesocolon
(transverse and sigmoid)

4. The peritoneal reflection

B. Mesentery

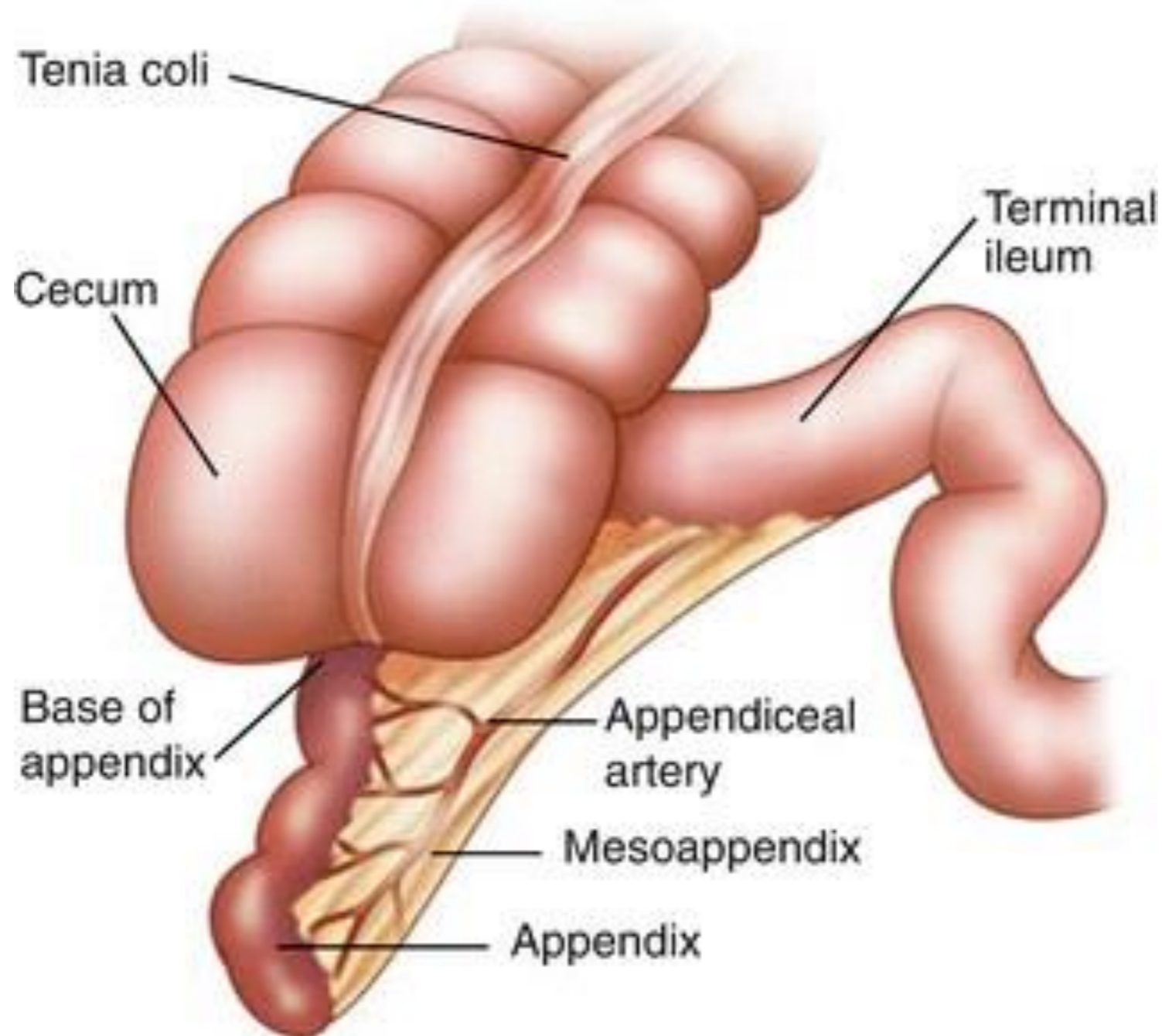
1. Attachment and content of Mesentery of small intestine



4. The peritoneal reflection

B. Mesentery

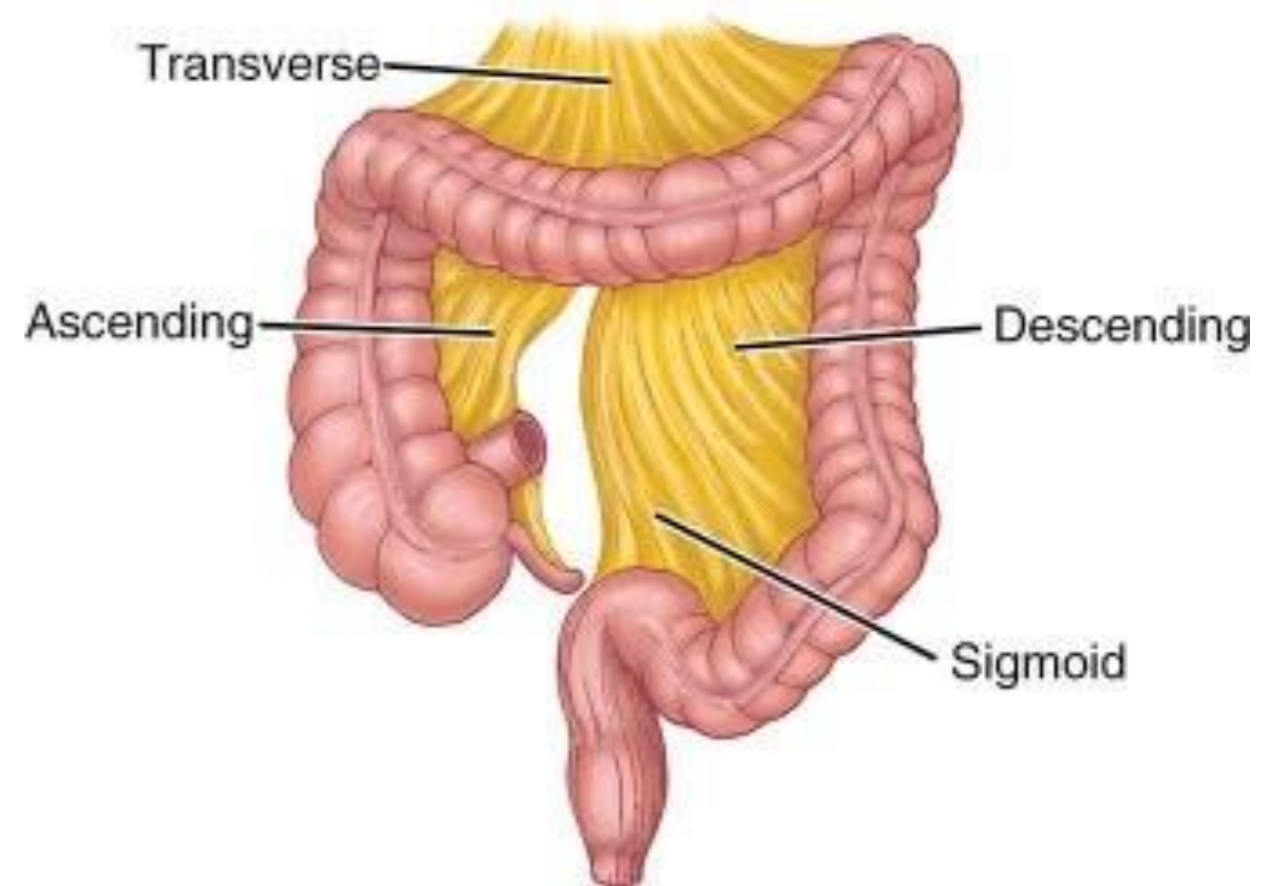
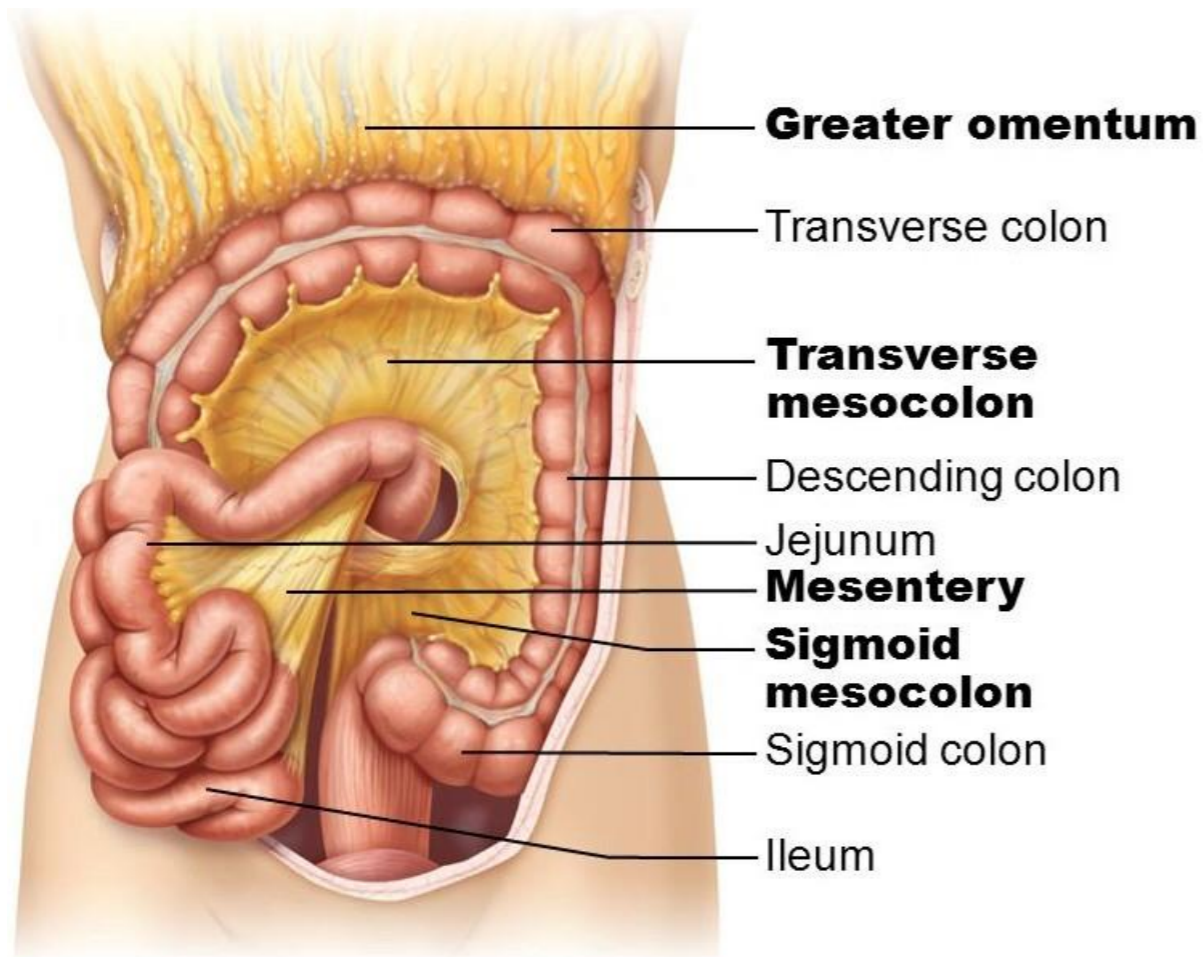
2. Attachment and content of Mesoappendix



4. The peritoneal reflection

B. Mesentery

3. Attachment and content of Mesocolon (transverse and sigmoid)



4. The peritoneal reflection

C. Ligaments

- The students should observe the following :
 1. The ligaments of the liver.
 2. The ligaments of the stomach.
 3. The ligaments of the spleen.
 4. The suspensory ligament of duodenum.

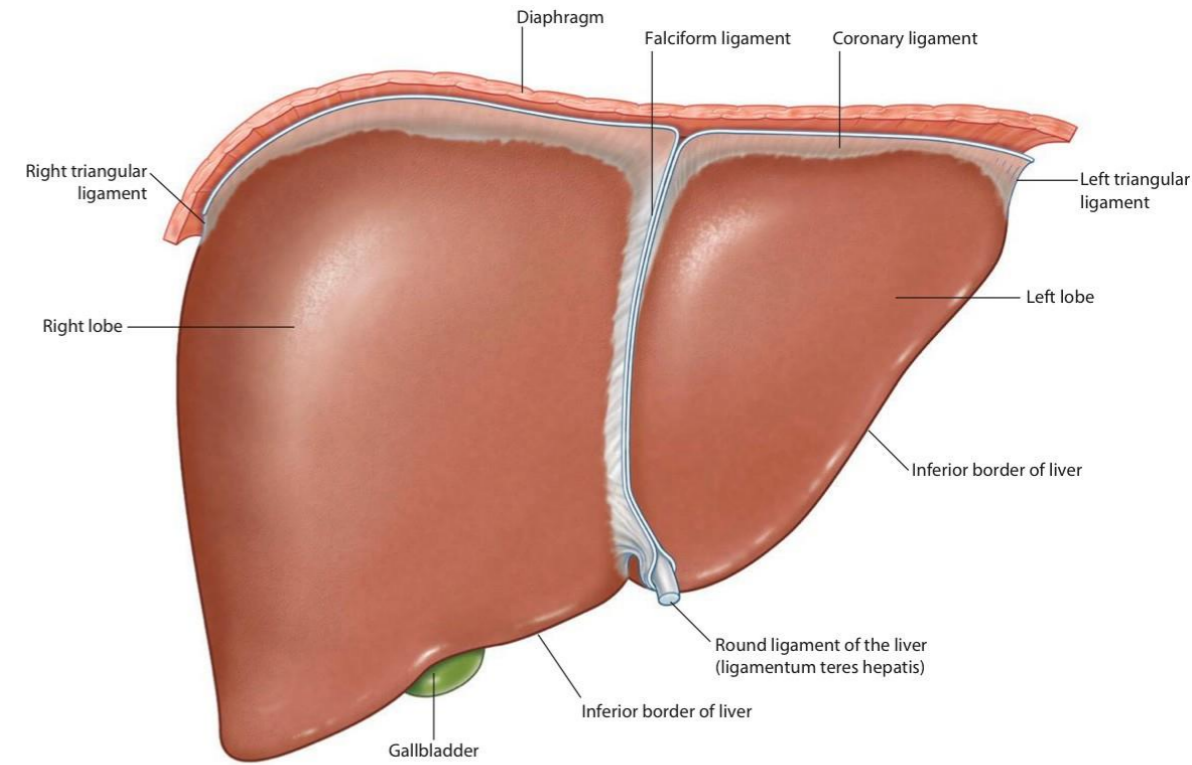
4. The peritoneal reflection

C. Ligaments

1. The ligaments of the liver.

- The students should observe the following :

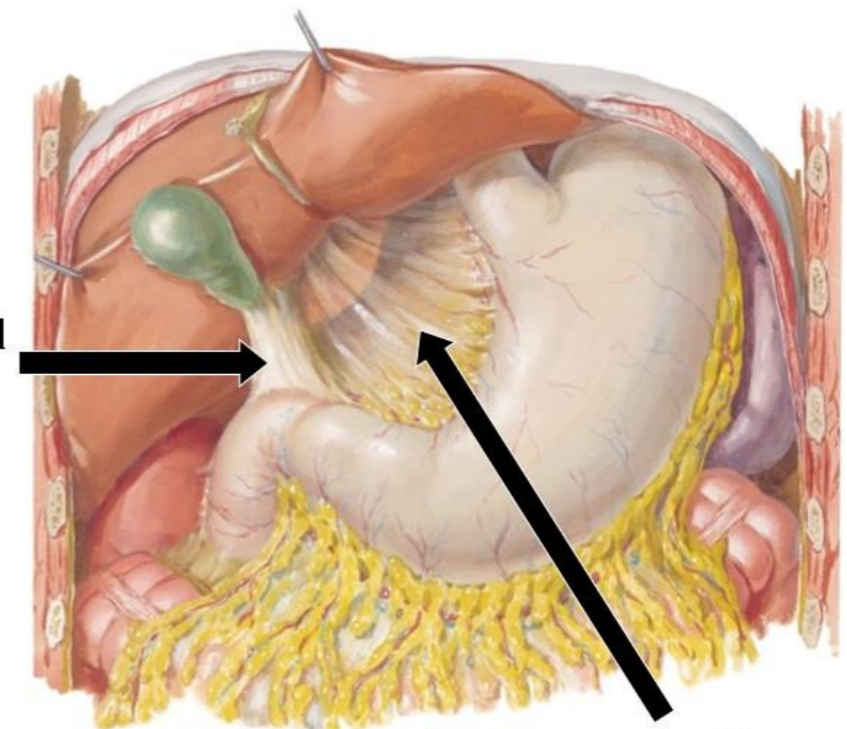
1. The falciform ligament of liver
2. The ligamentum teres hepatis
3. The coronary ligament
4. The right triangular ligament
5. The left triangular ligament



Anterior surface of liver

6. The hepatogastric ligament
7. The hepatoduodenal ligament

Hepatoduodenal Ligament



Hepatogastric Ligament

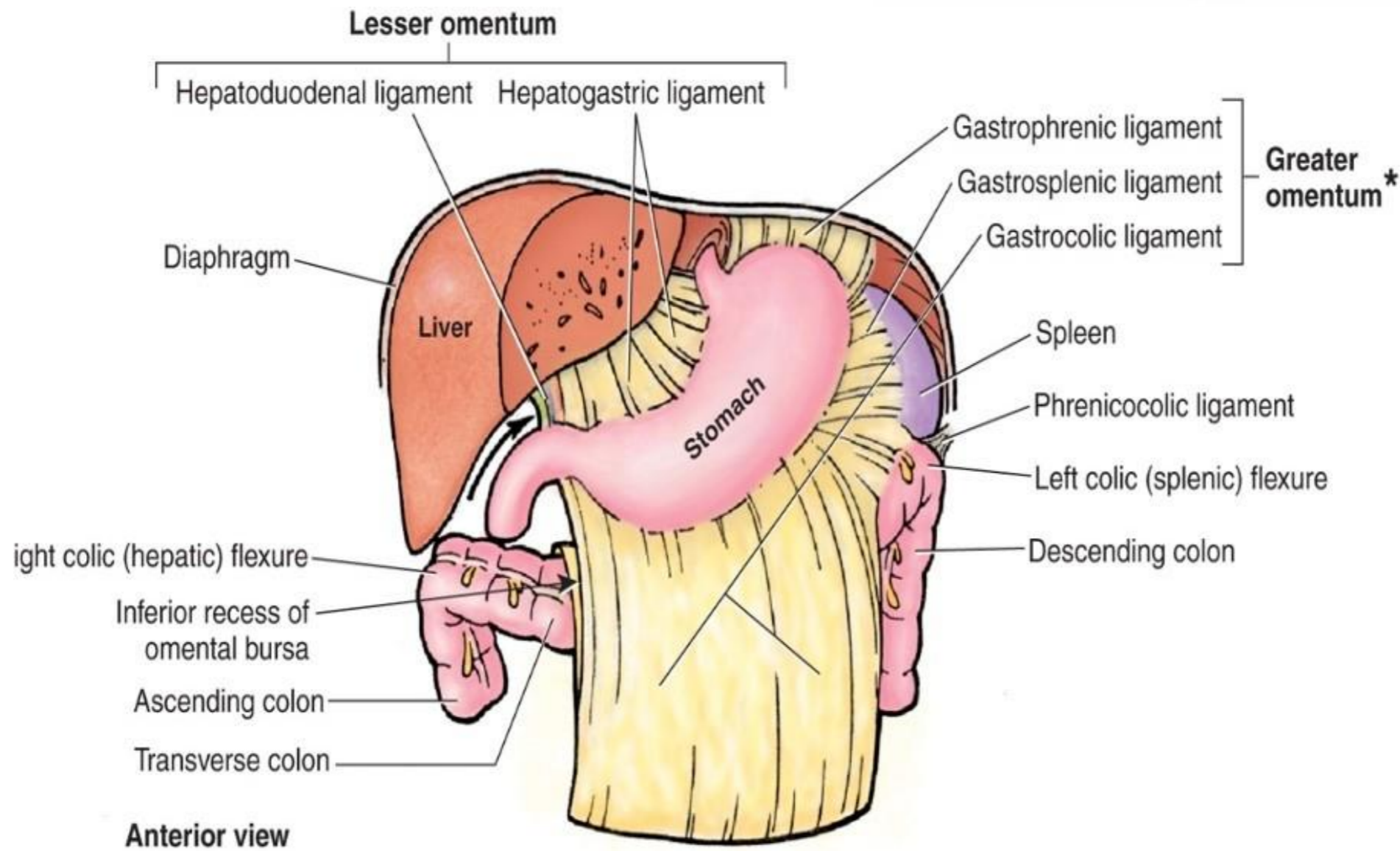
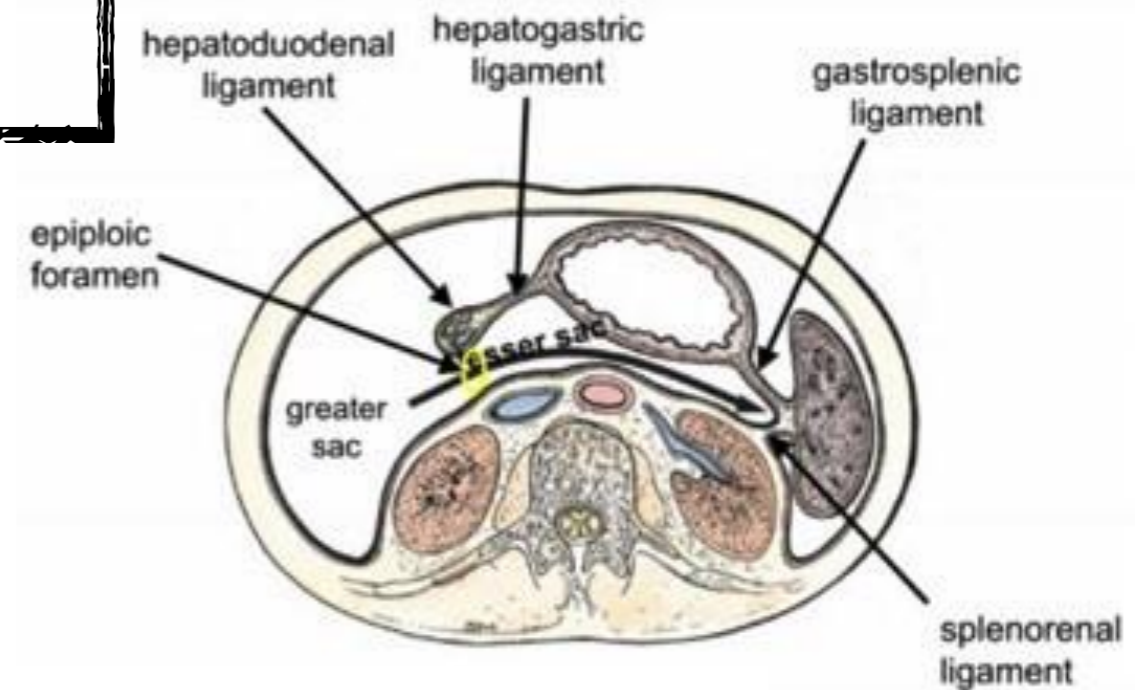
4. The peritoneal reflection

C. Ligaments

2. The ligaments of the stomach.

- The students should observe the following :

1. Hepatogastric ligament
2. Gastrosplenic ligament
3. Gastrophrenic ligament
4. Gastrocolic ligament
5. Gastropancreatic ligament



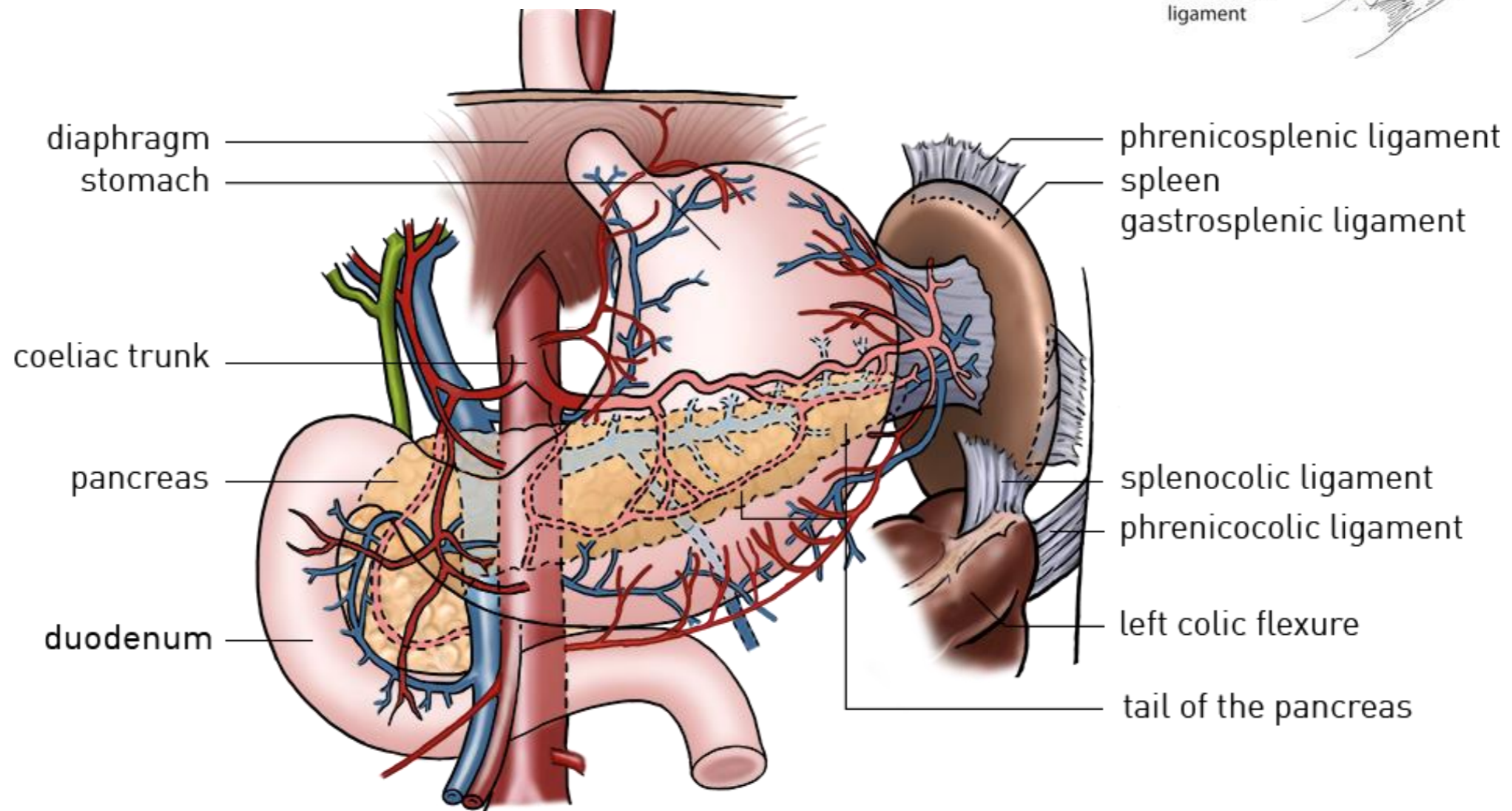
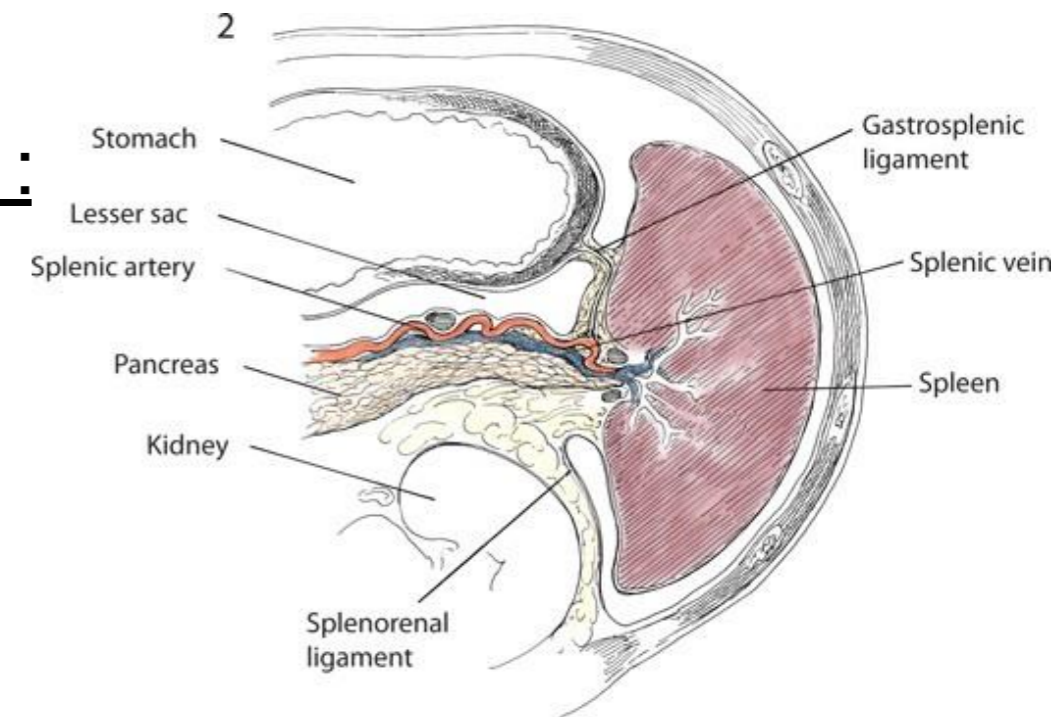
4. The peritoneal reflection

C. Ligaments

3. The ligaments of the spleen.

- The students should observe the following :

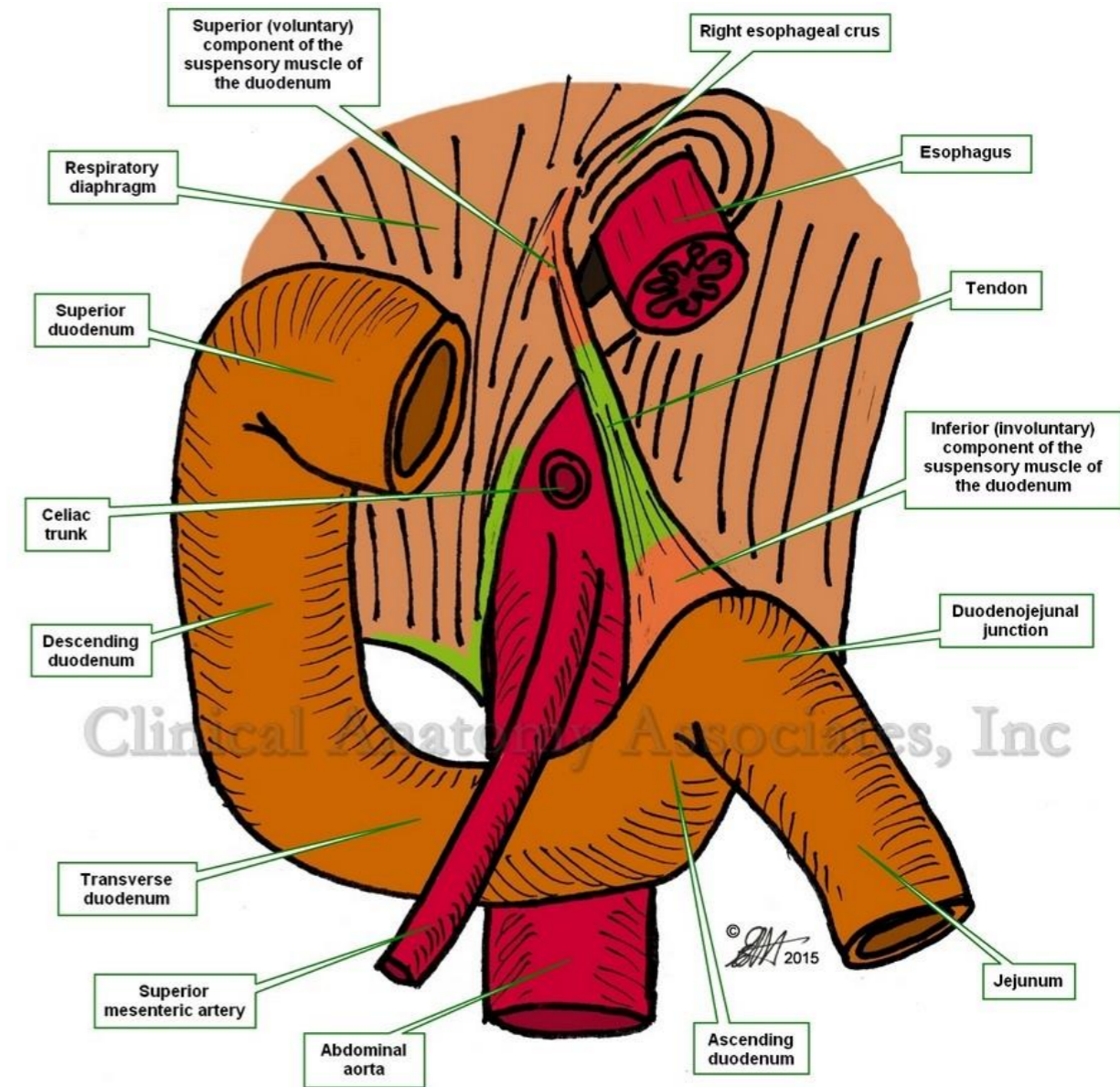
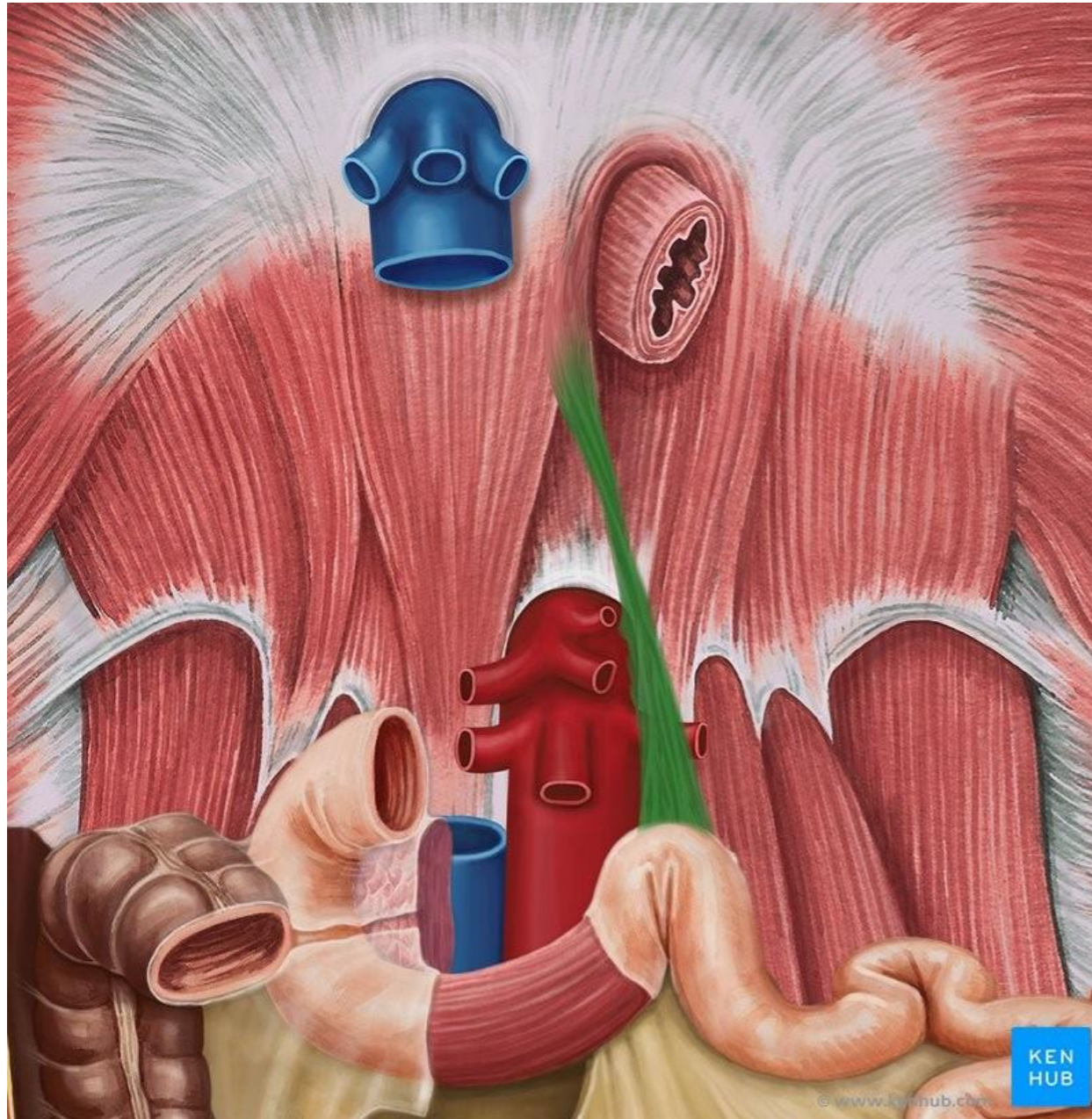
1. Gastrosplenic ligament
2. Splenorenal ligament
3. Phrenicosplenic ligament
4. Splenocolic ligament



4. The peritoneal reflection

C. Ligaments

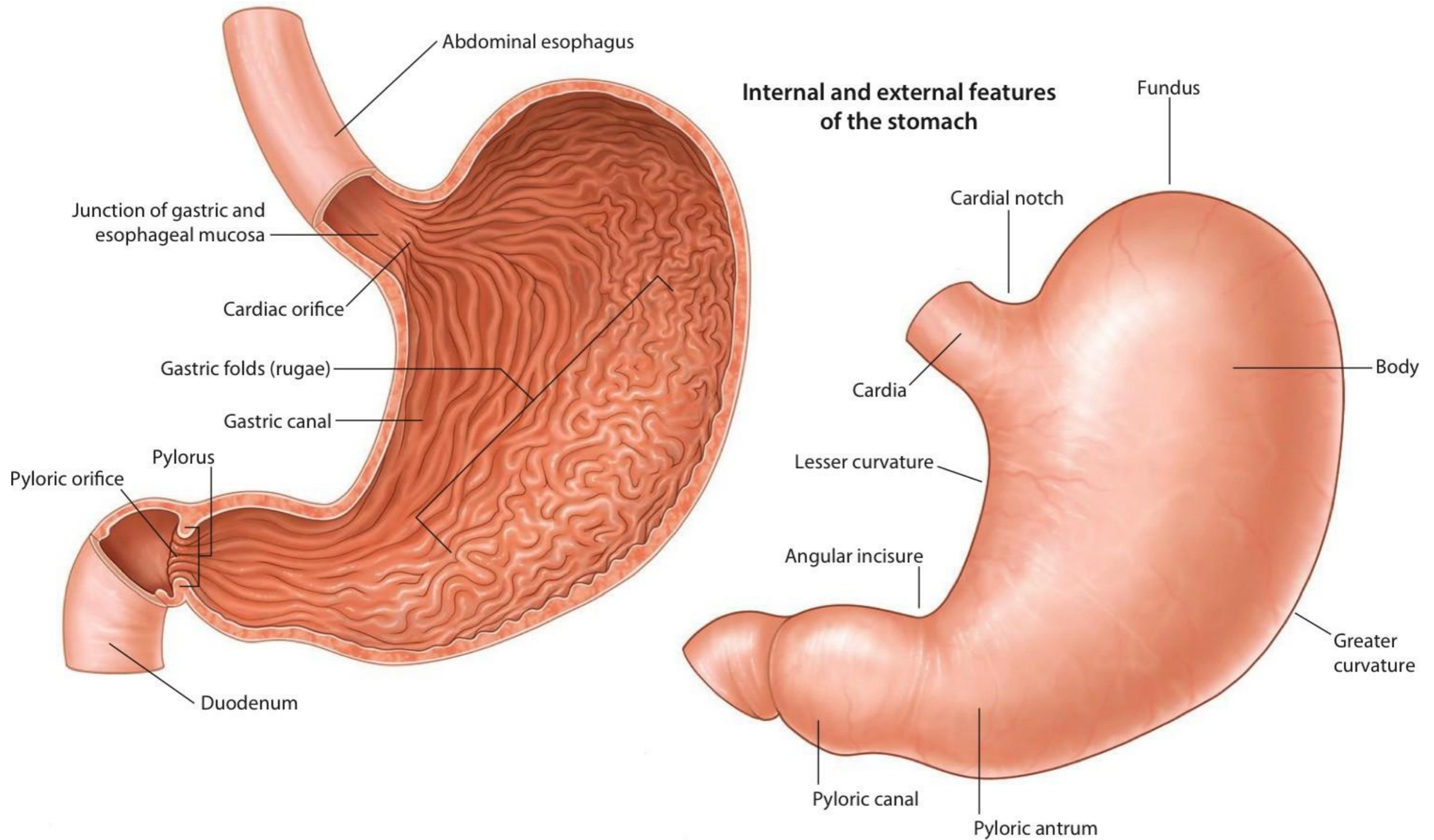
4. The suspensory ligament of duodenum(Treitz)



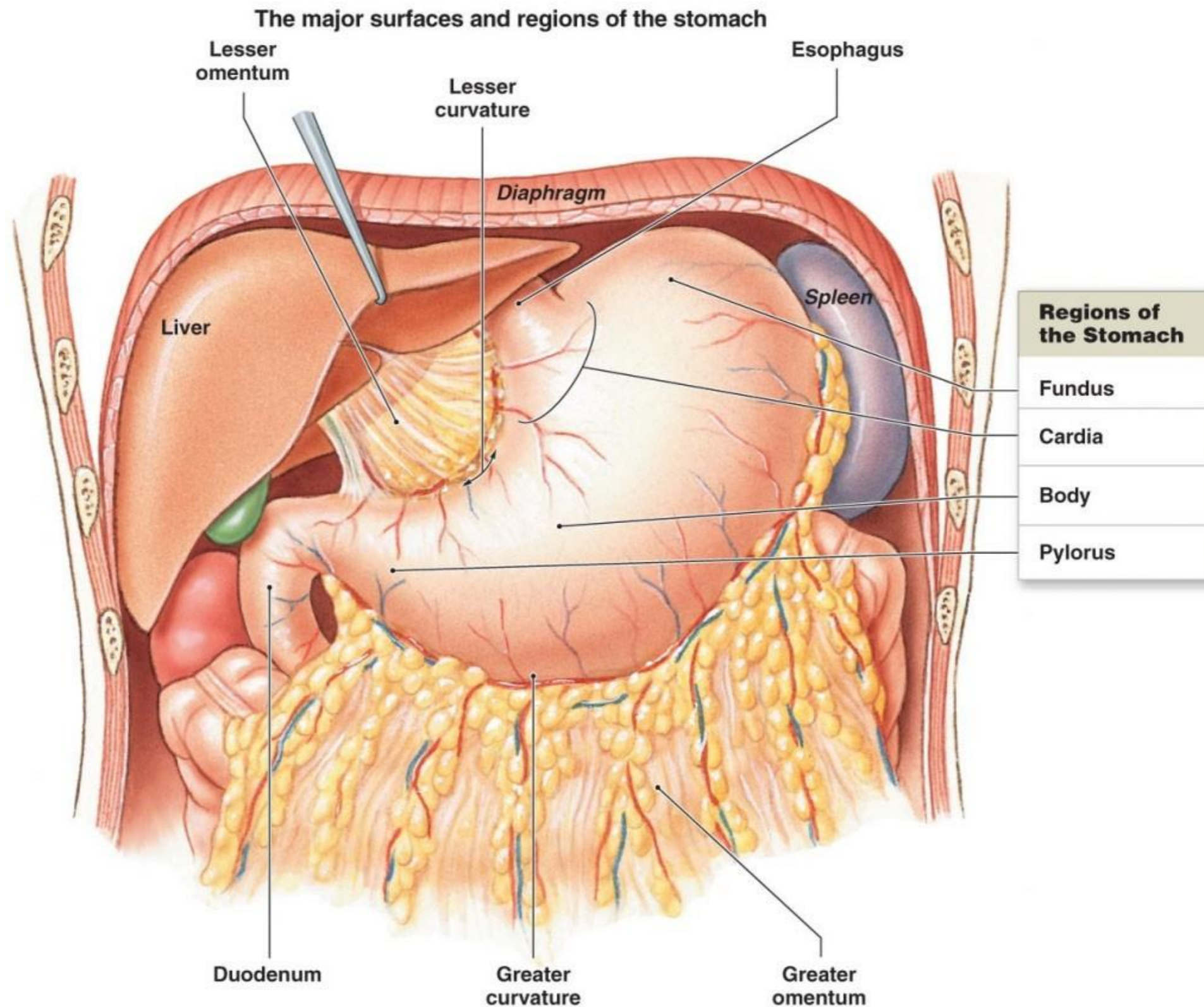
✱ Stomach.

- The students should know and identify :
 1. Parts, Surfaces, curvature and Orifices. of the stomach
 2. Omenta of the stomach
 3. Relations of the stomach
 4. Blood supply of the stomach
 5. Venous and lymphatic drainage of the stomach
 6. Nerve supply of the stomach

1. Parts, Surfaces, curvature and Orifices of the stomach



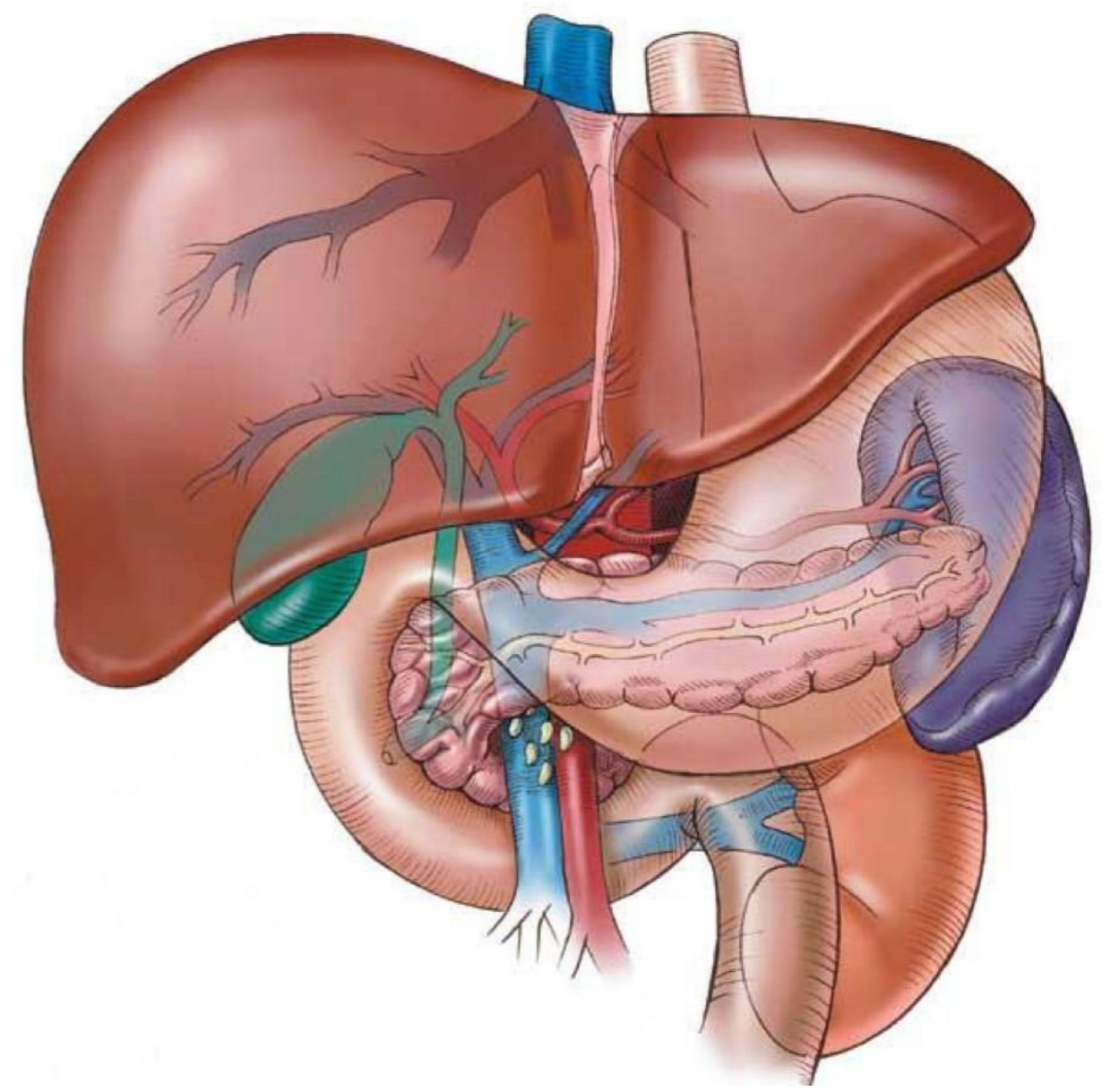
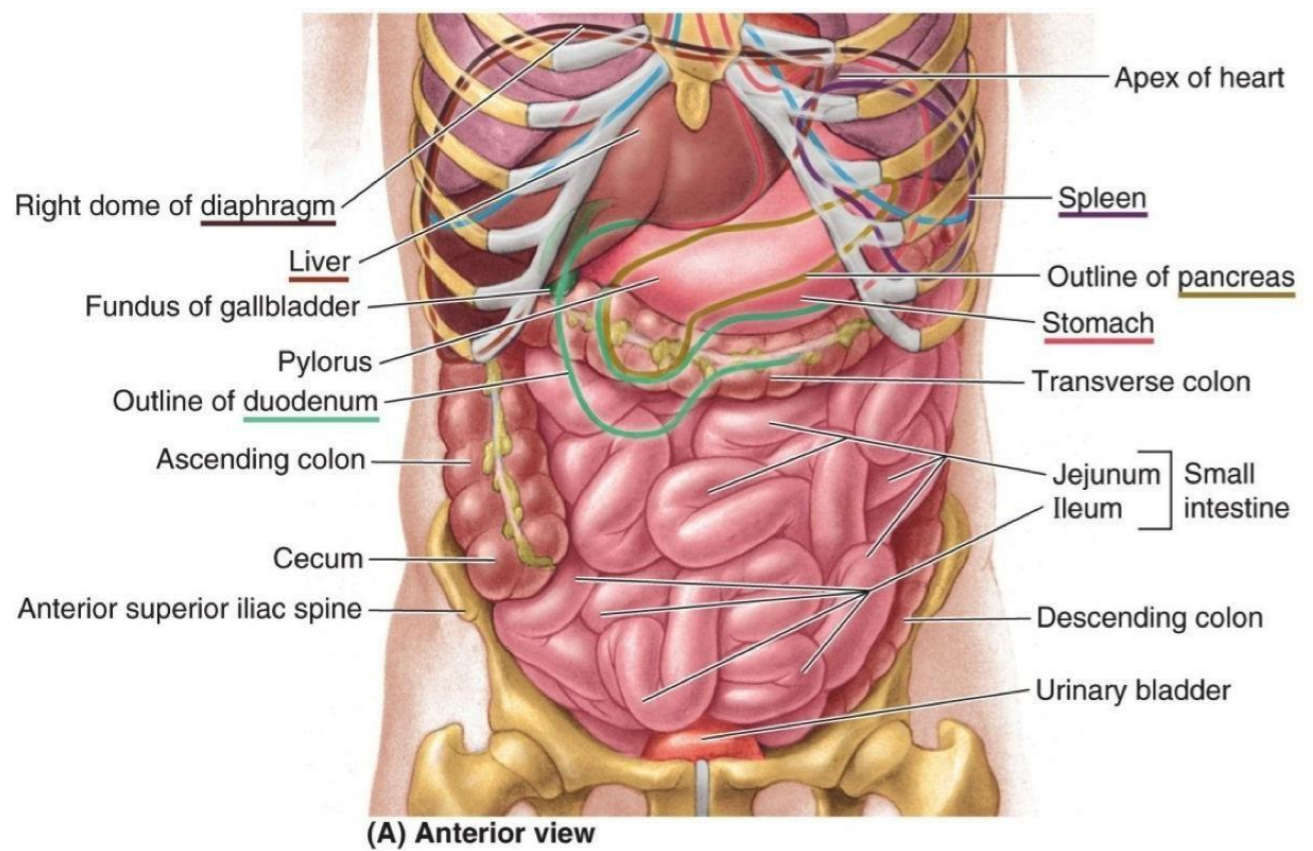
2. Omenta of the stomach



3. Relations of the stomach

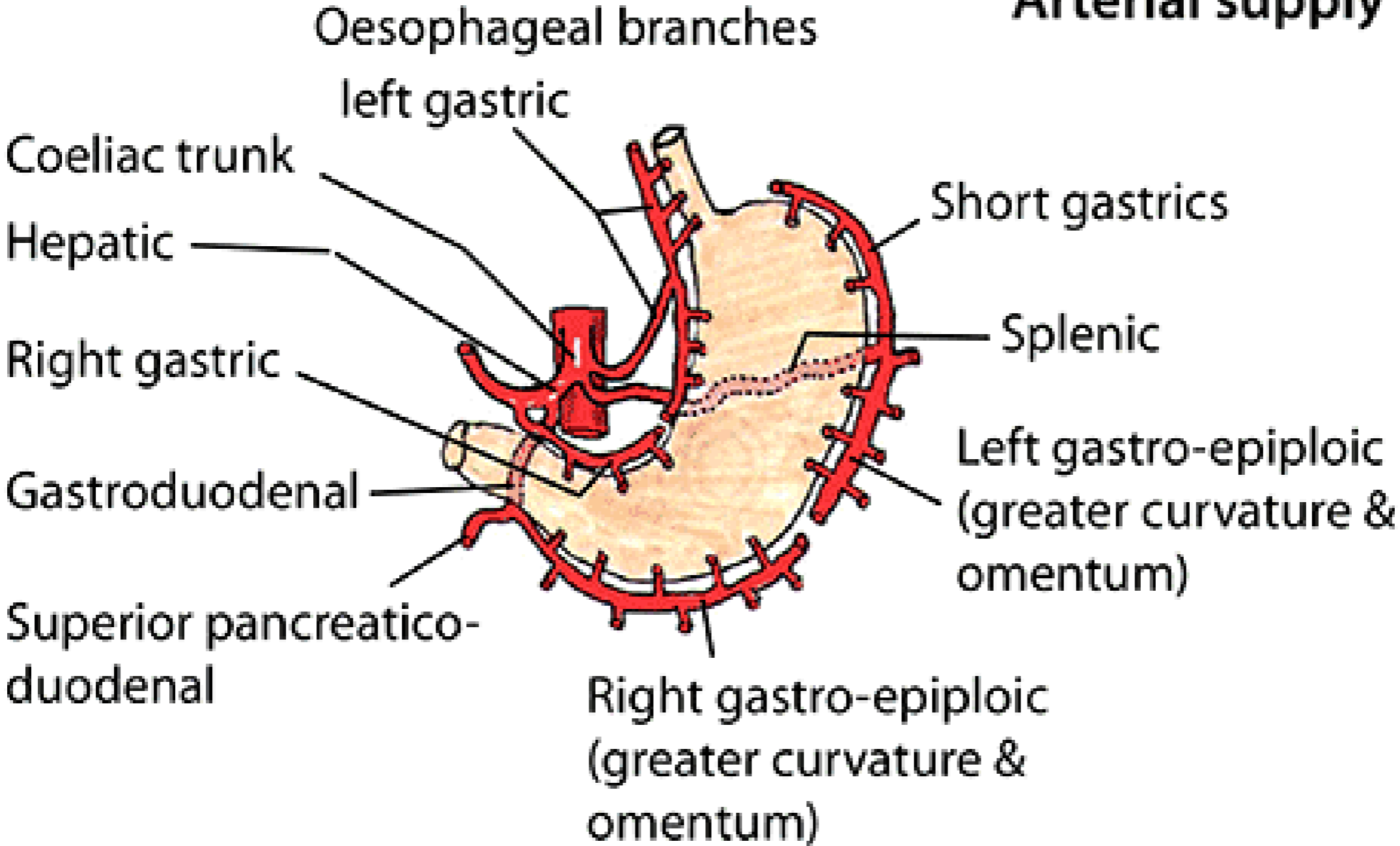
- Anterior- superior

- Posteriorly = stomach bed

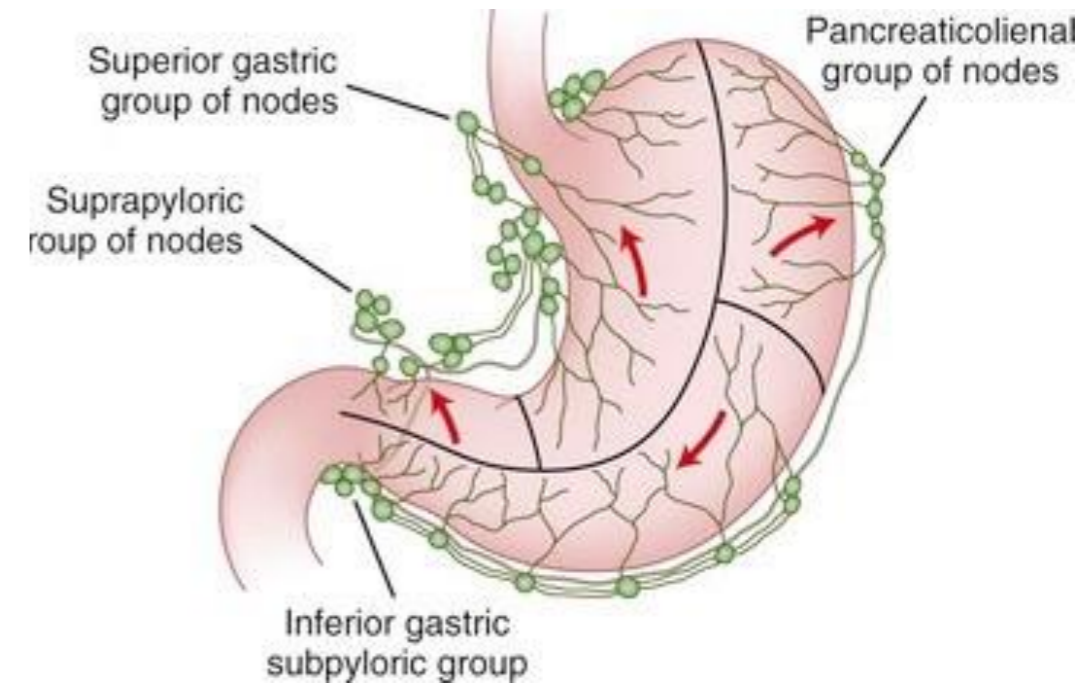
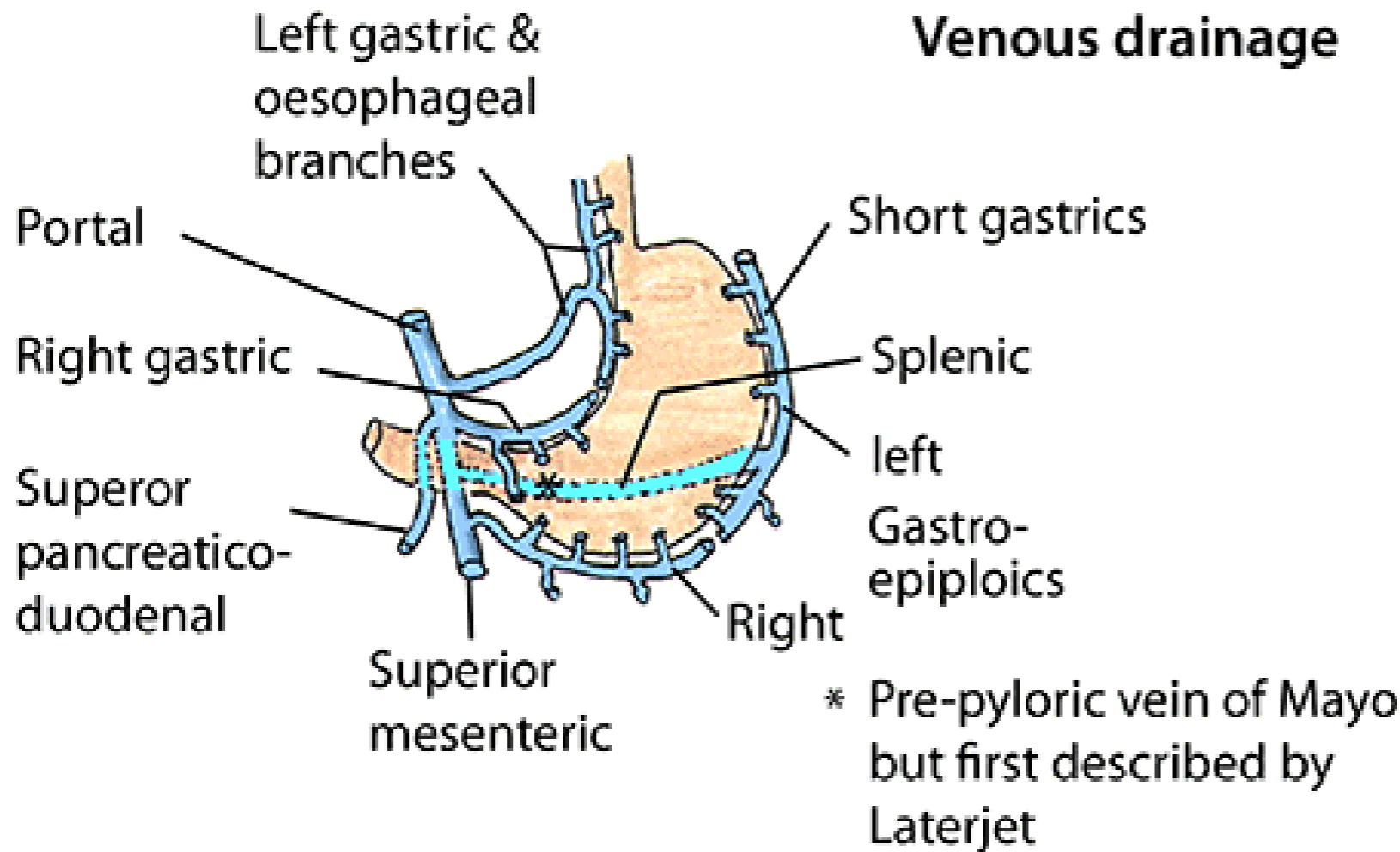


4. Blood supply of the stomach

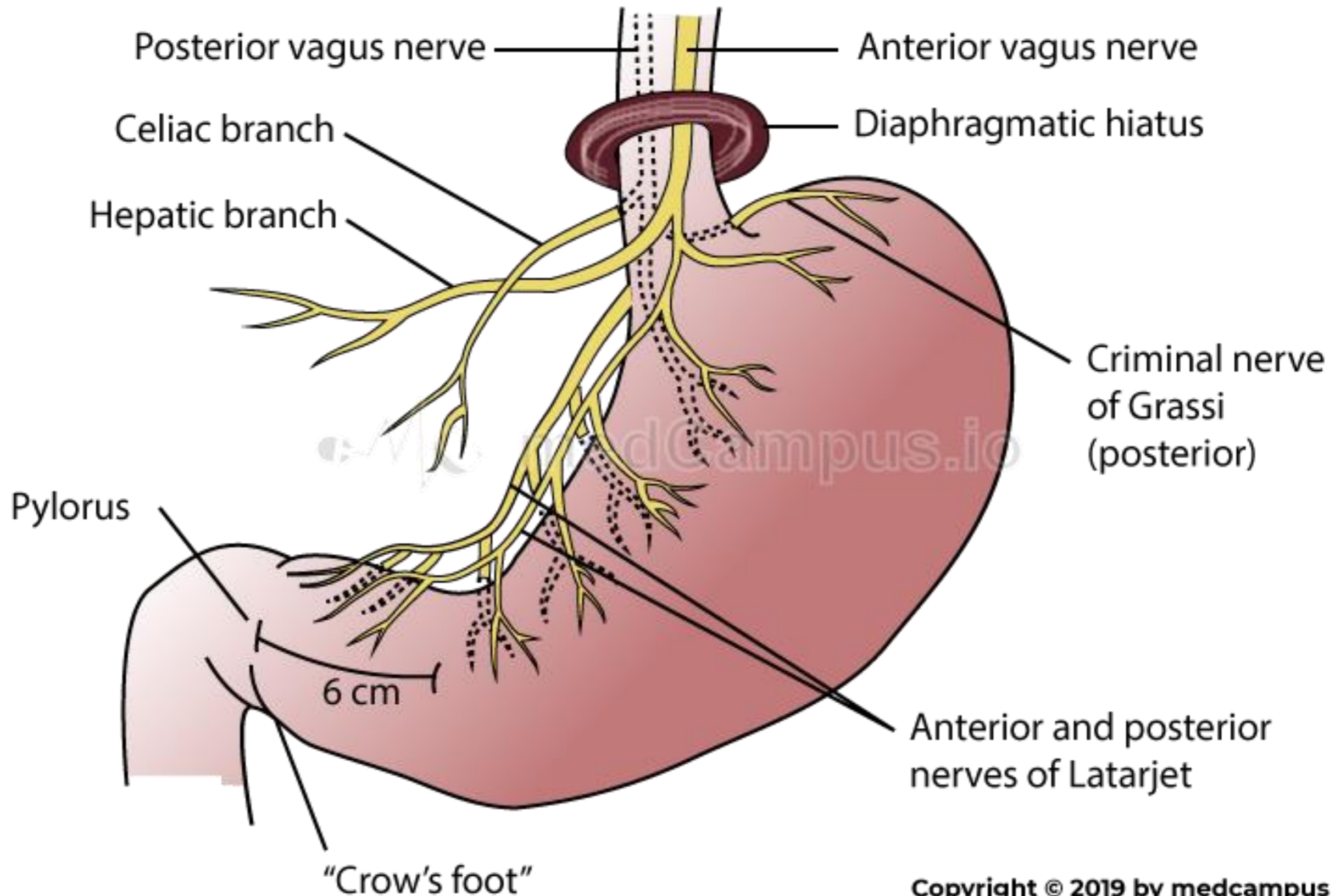
Arterial supply



5. Venous and lymphatic drainage of the stomach



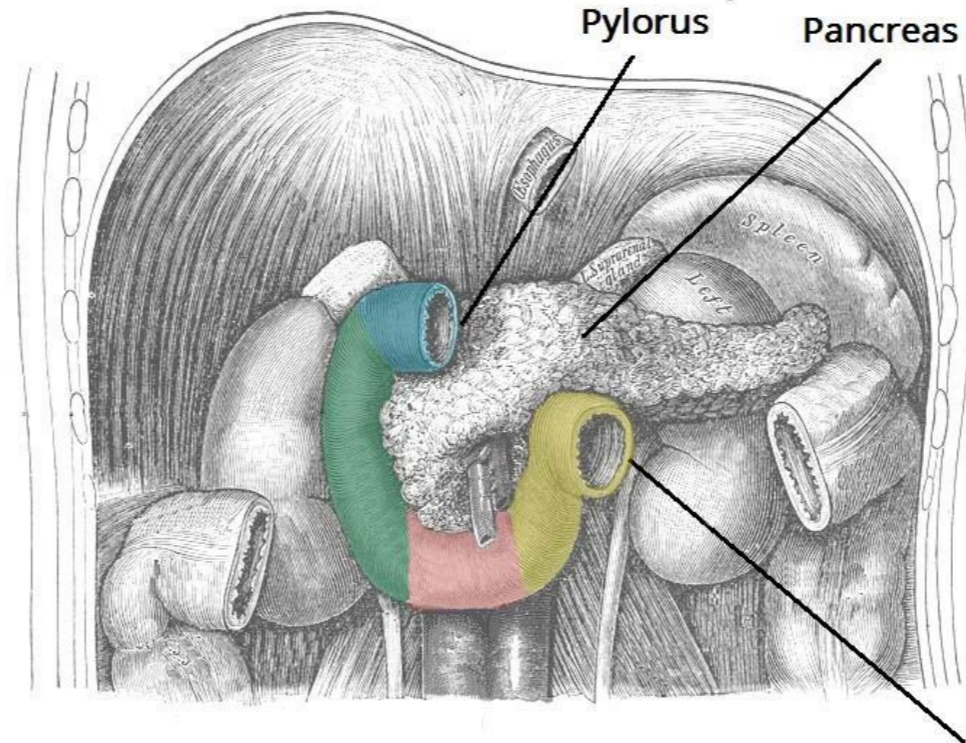
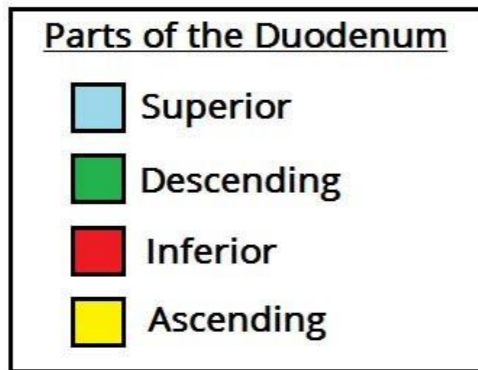
6. Nerve supply of the stomach



✦ Duodenum.

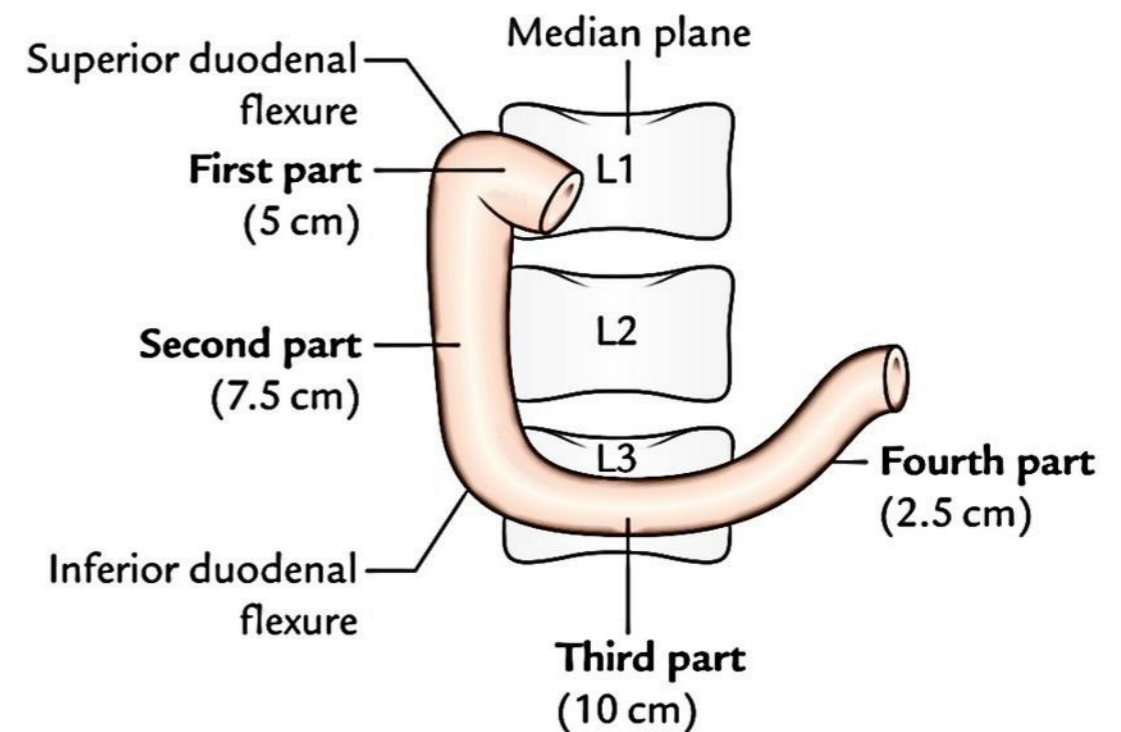
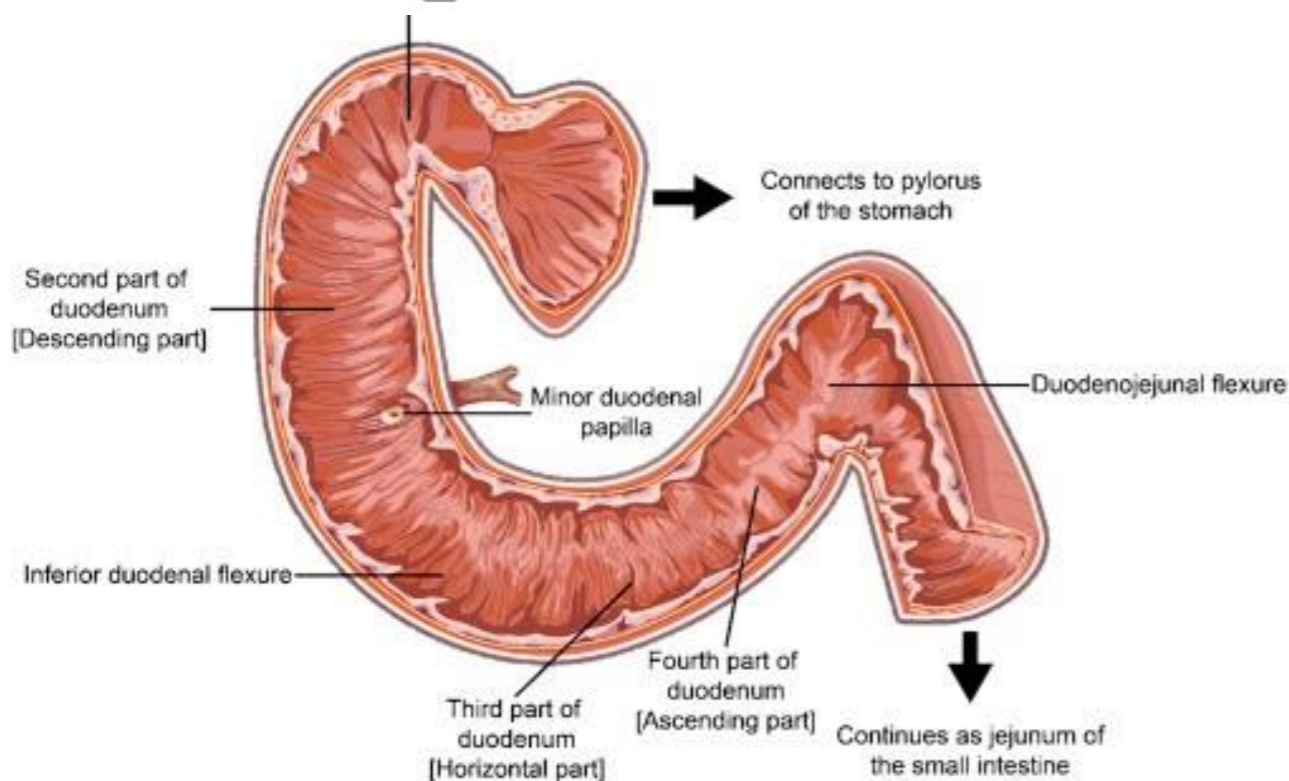
- The students should know and identify :
 1. Parts, Site and length of the duodenum
 2. Relations of the duodenum
 3. Blood supply of the duodenum
 4. Venous and lymphatic drainage of the duodenum

1. Parts, Site and length of the duodenum



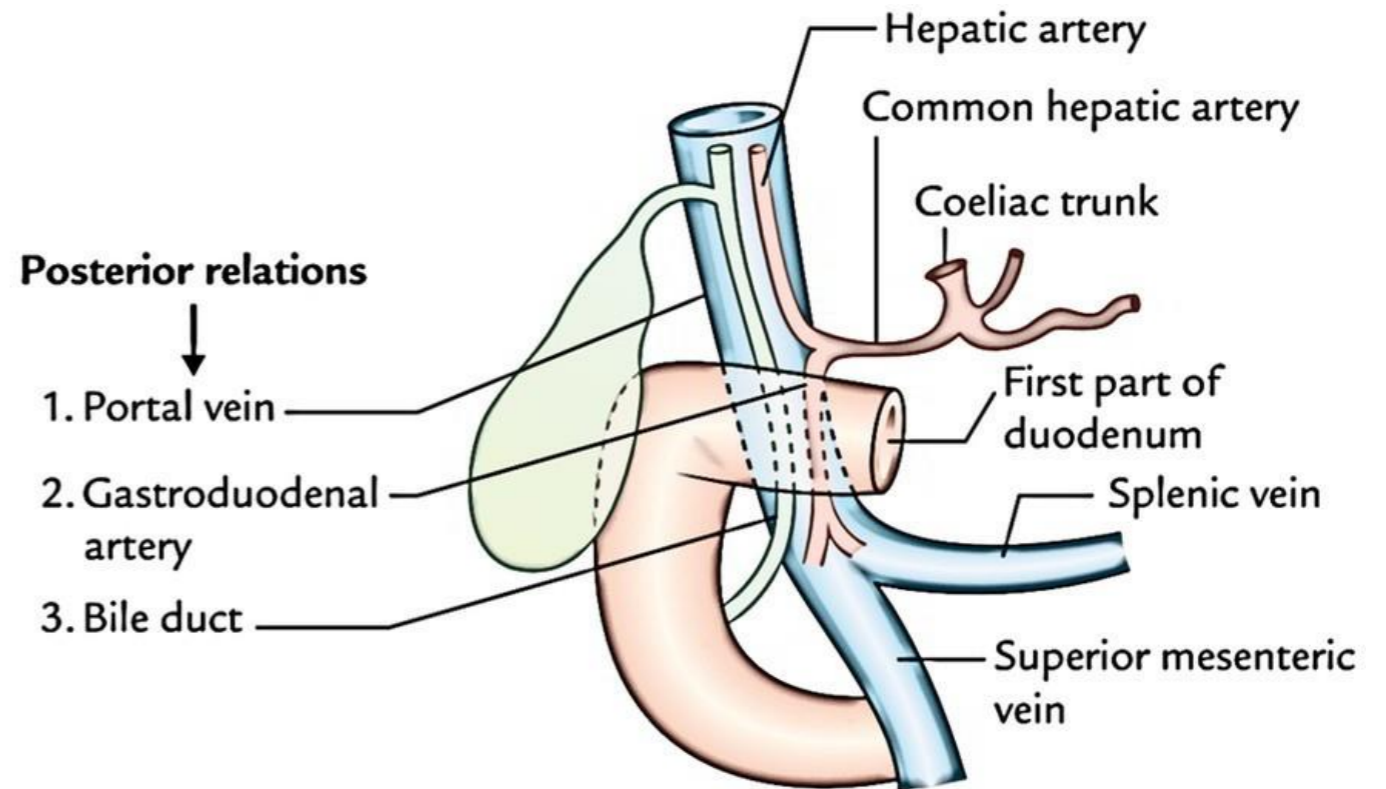
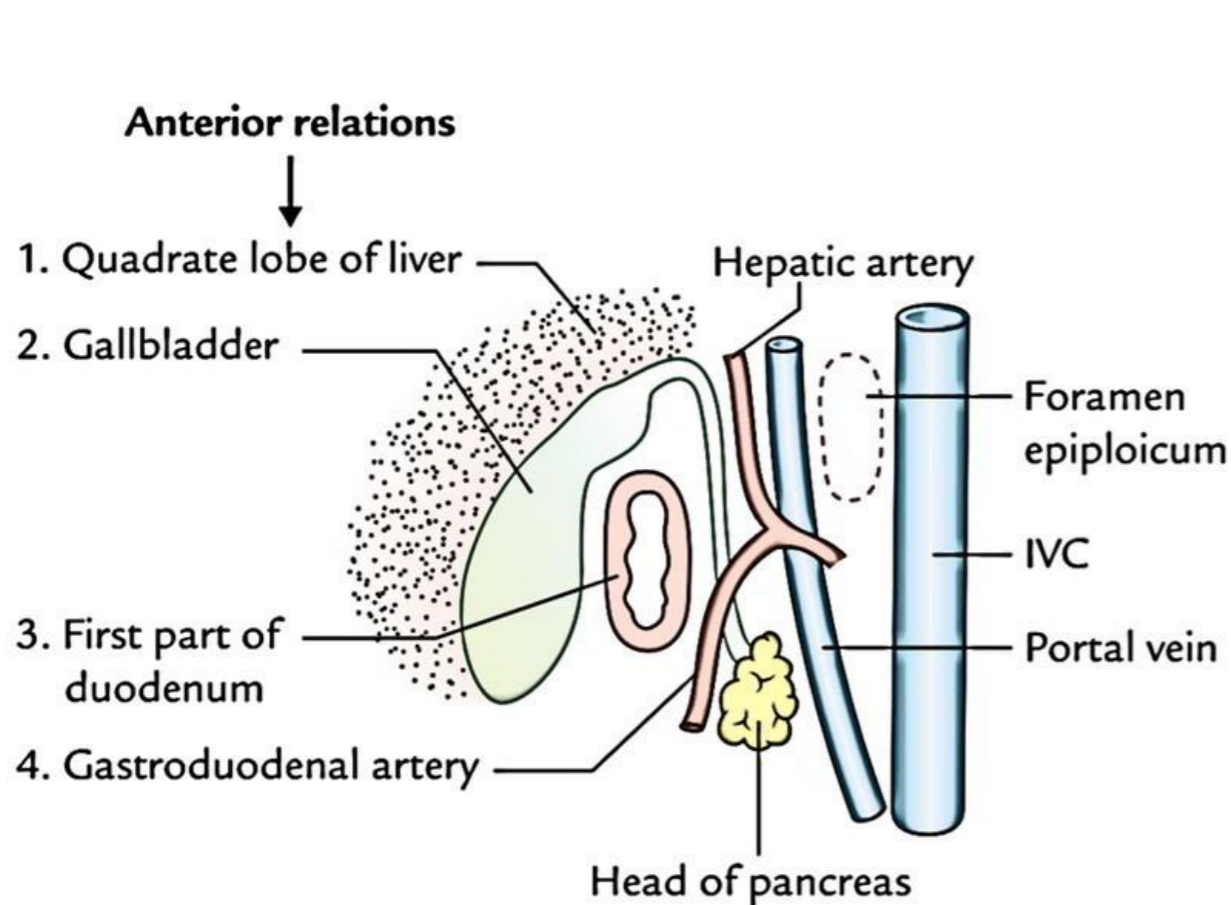
Duodenojejunal Junction

Superior duodenum
First part of duodenum
© teachmeanatomy
The #1 Applied Human Anatomy Site on the Web.



2. Relations of the duodenum

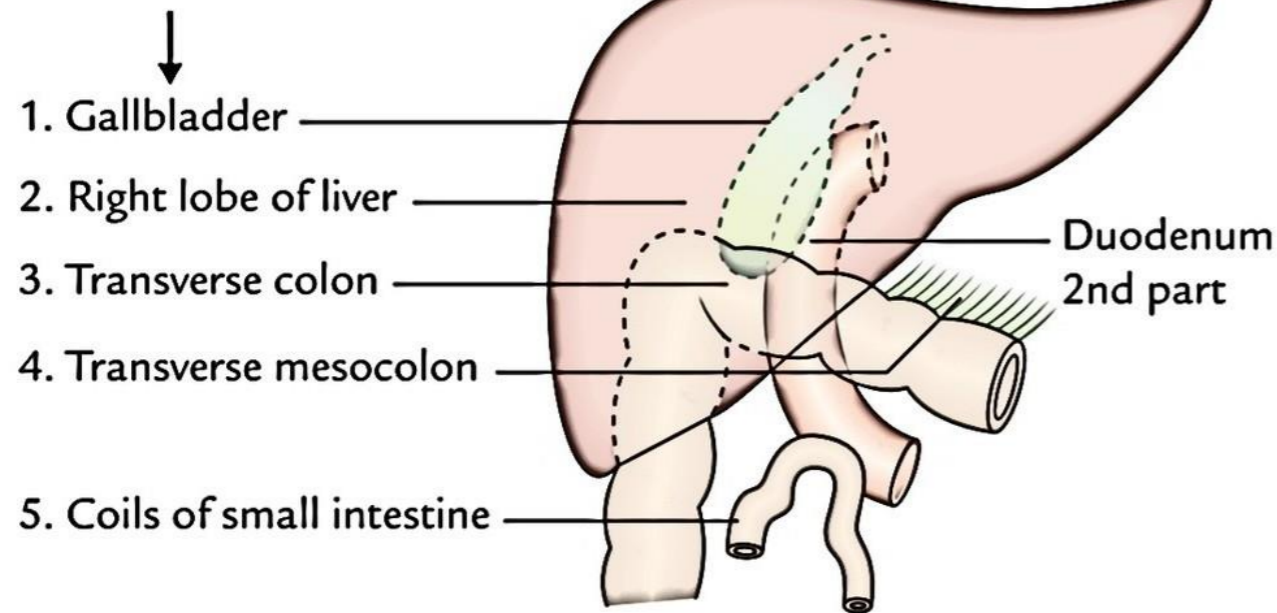
- Relations of the First Part of the Duodenum



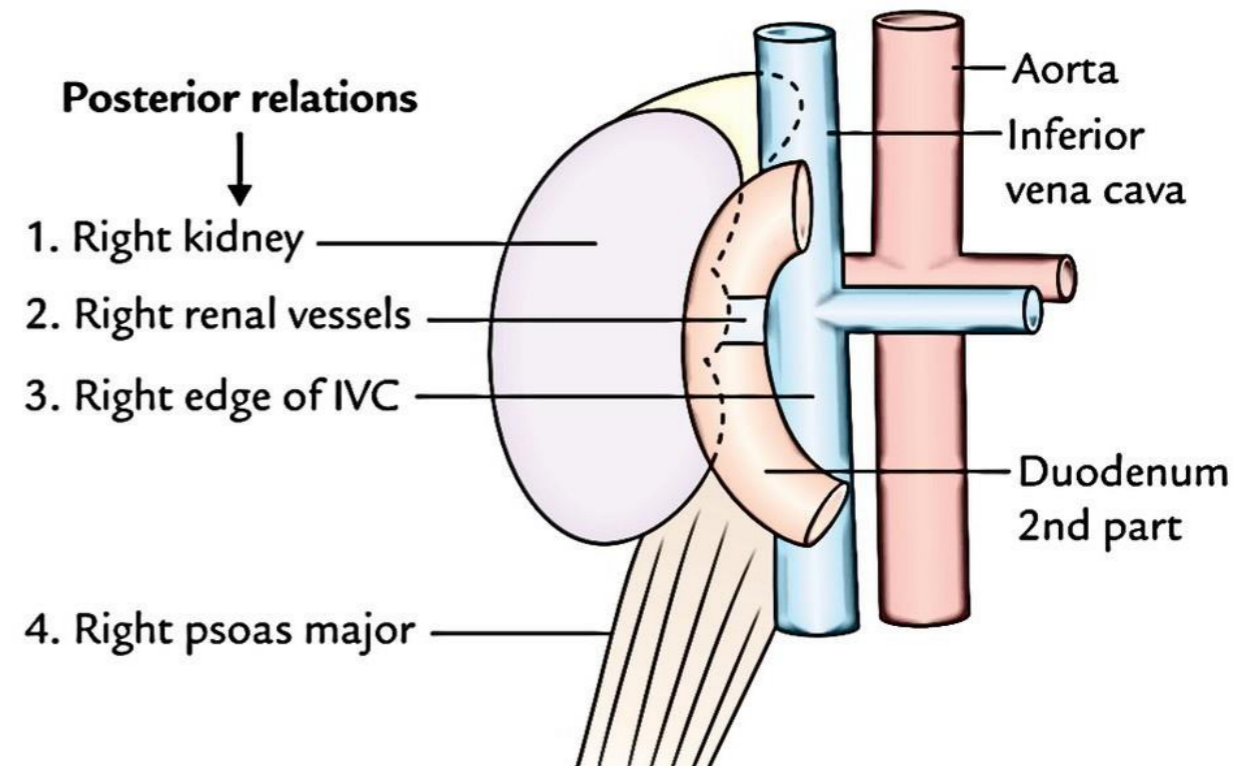
2. Relations of the duodenum

- Relations of the Second Part of the Duodenum

Anterior relations

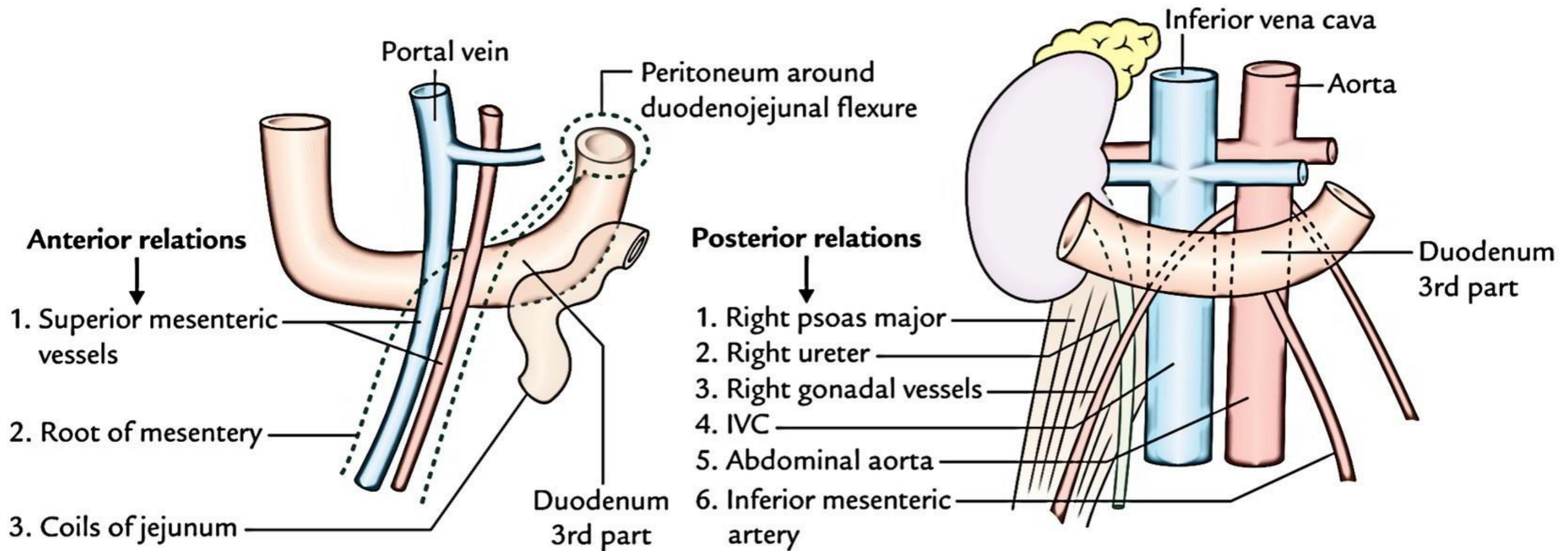


Posterior relations



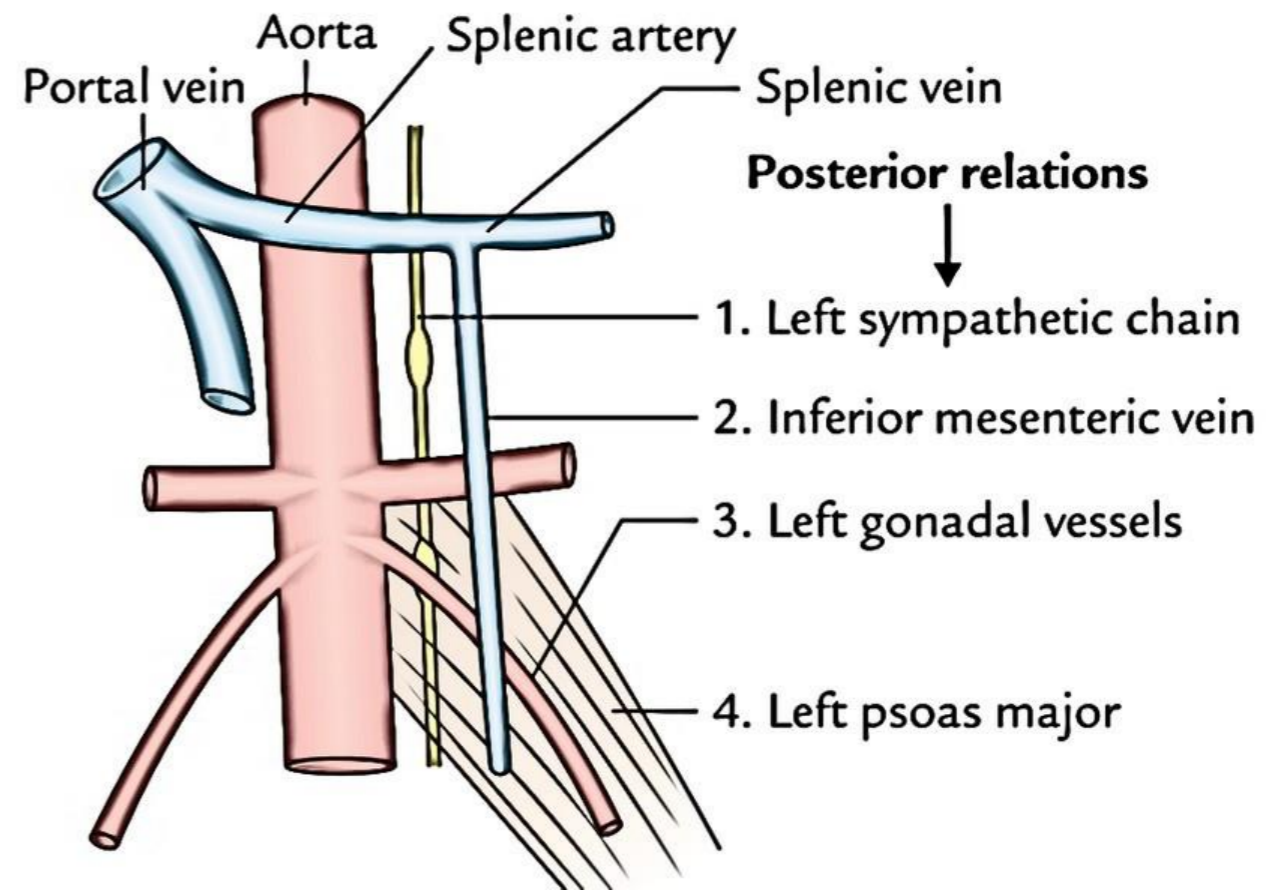
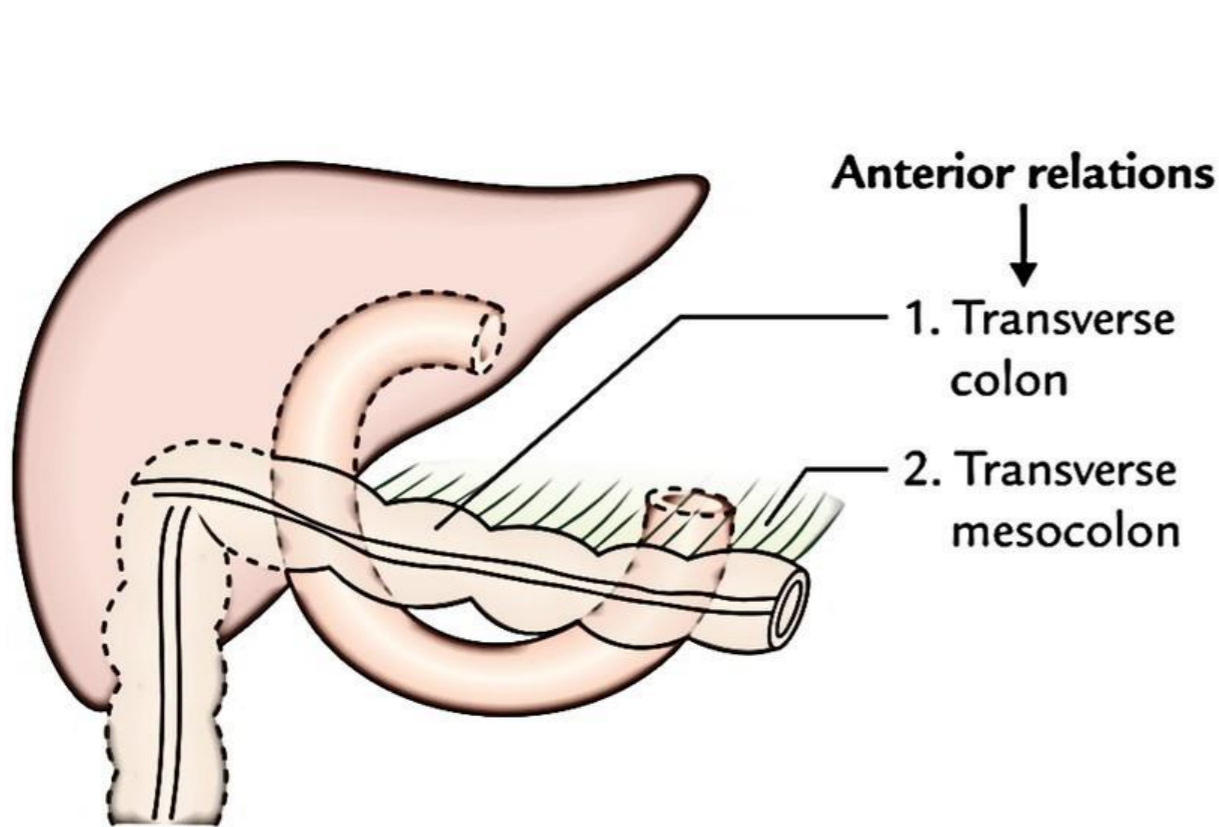
2. Relations of the duodenum

- Relations of the Third Part of the Duodenum



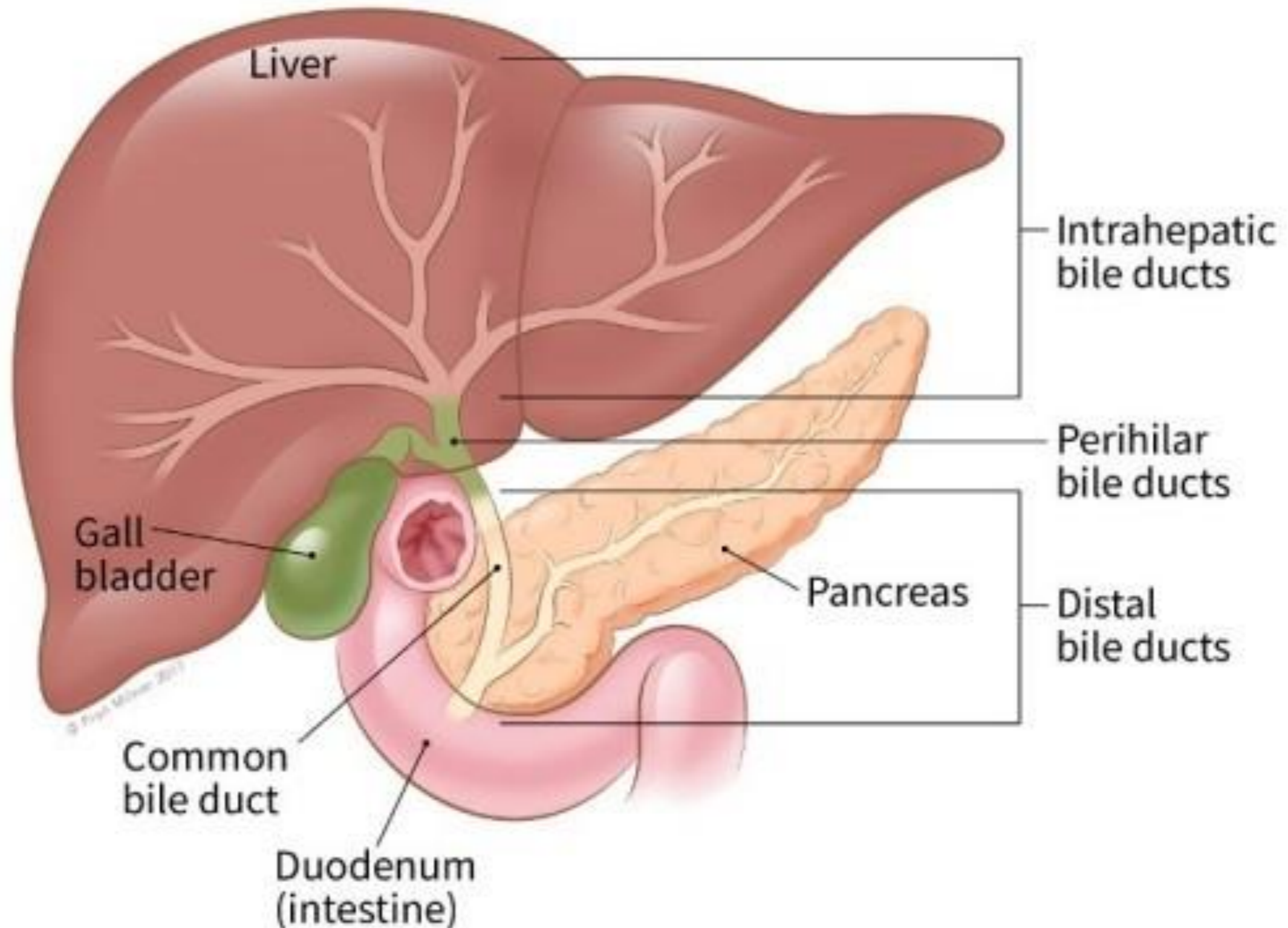
2. Relations of the duodenum

- Relations of the Fourth Part of the Duodenum

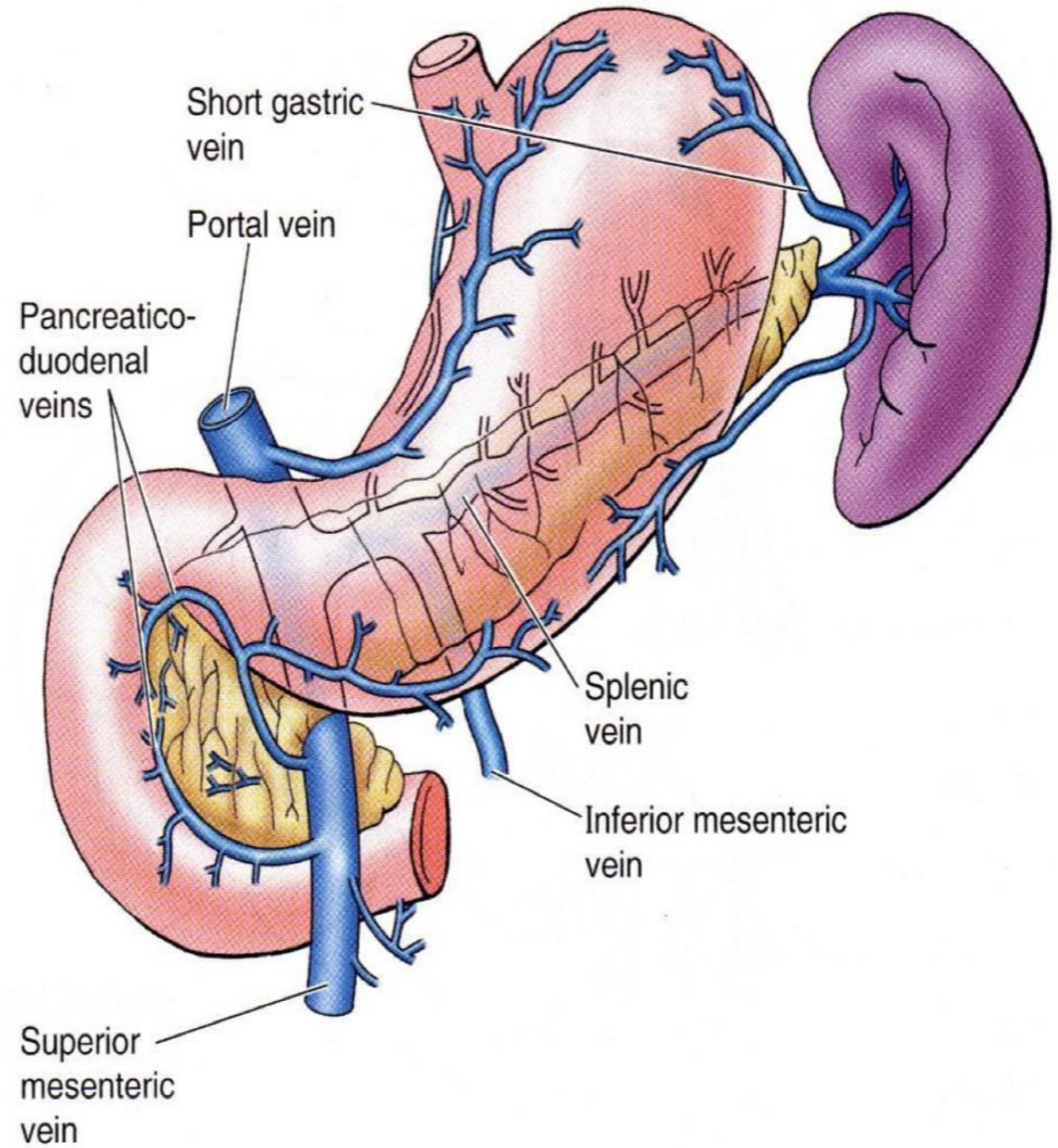
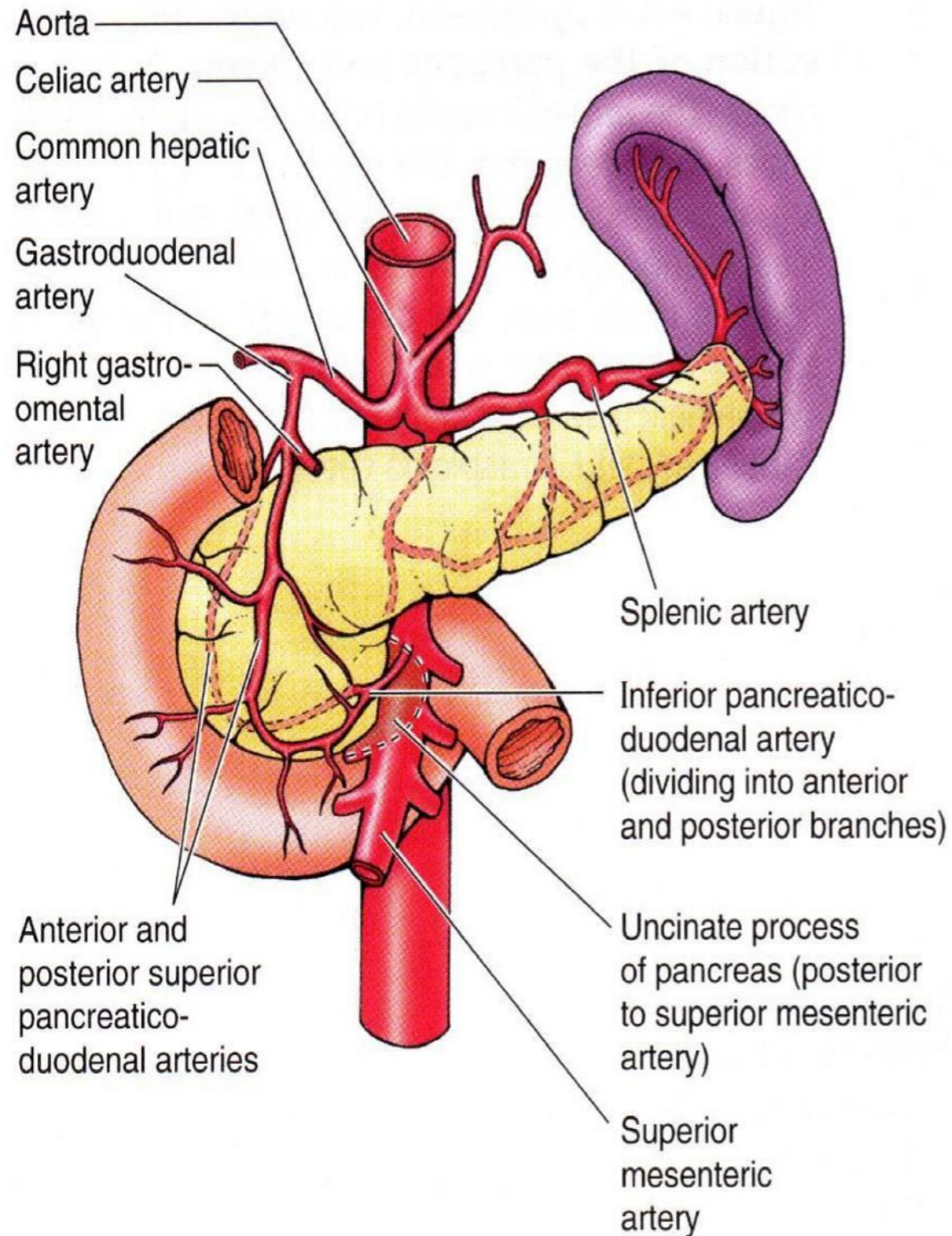


2. Relations of the duodenum

- Relations of pancreas and bile ducts to the Duodenum



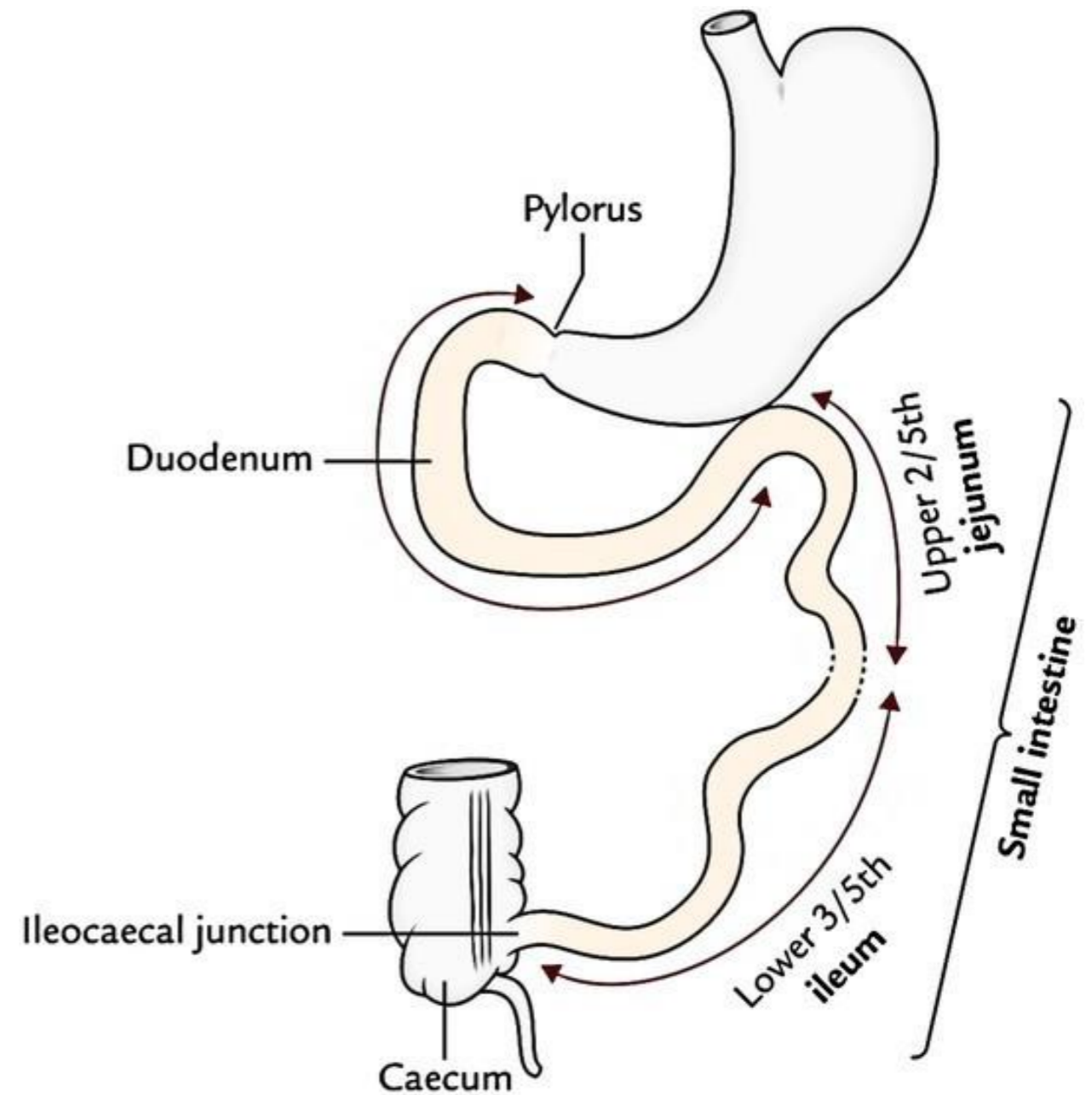
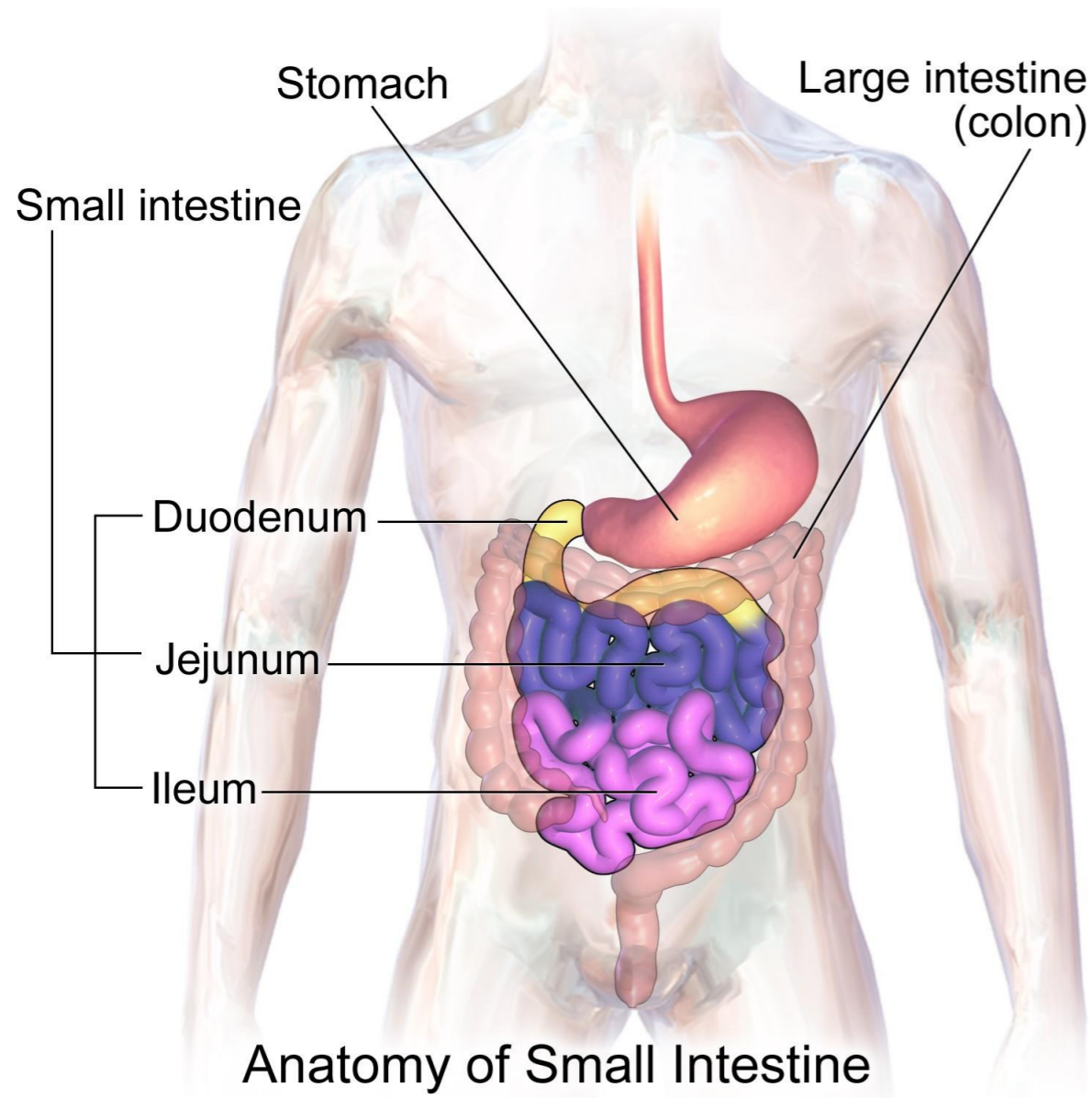
3. Blood supply and Venous drainage of the duodenum



✦ Jejunum and Ileum.

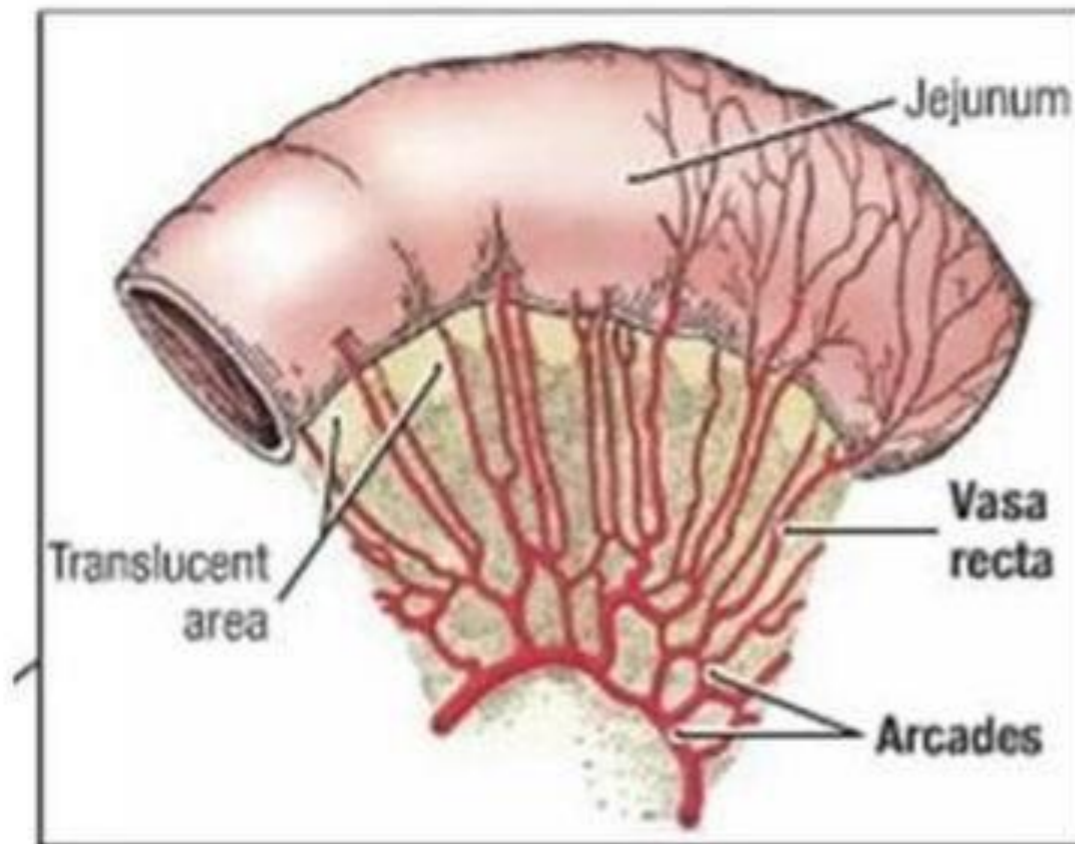
- The students should know and identify :
 1. Site and length of the Jejunum and Ileum.
 2. Differences between the Jejunum and Ileum.
 3. Blood supply of the Jejunum and Ileum.
 4. Venous and lymphatic drainage of Jejunum and Ileum.

1. Site and length of the Jejunum and Ileum



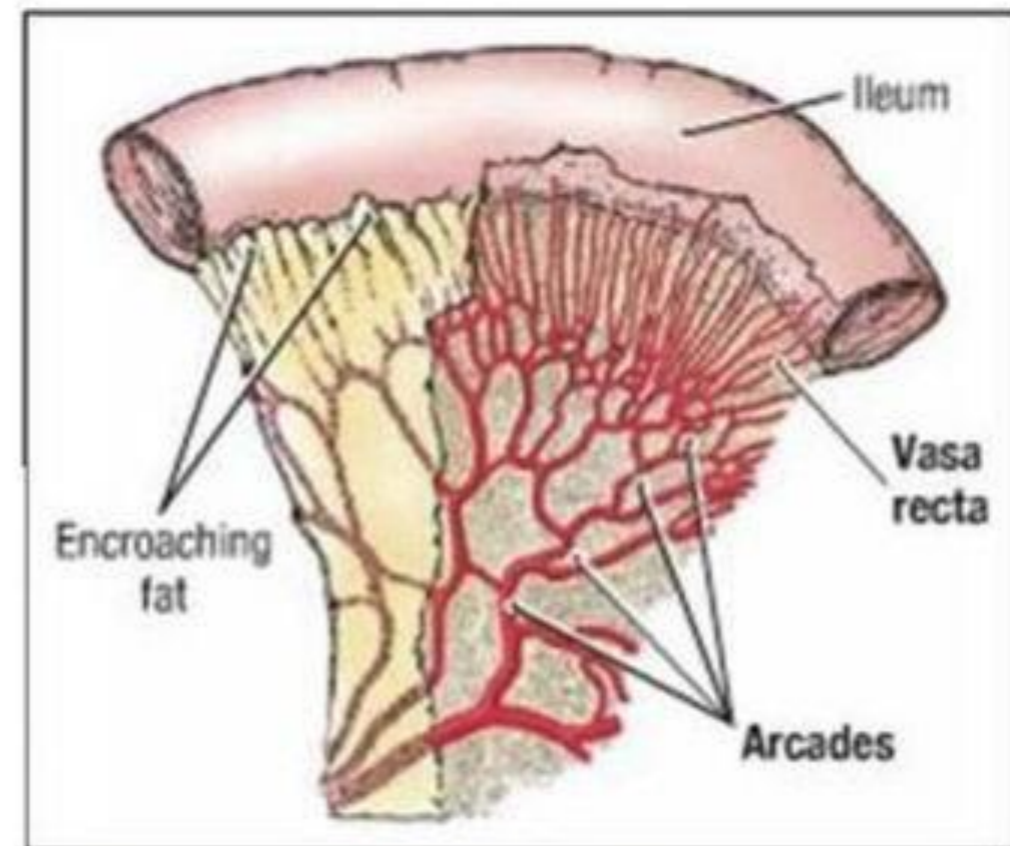
2. Differences between the Jejunum and Ileum

Jejunum



- Less complex arterial arcades
- Longer Vasa Recta
- More plicae circulares, thicker, more highly folded
- No fat in mesentery

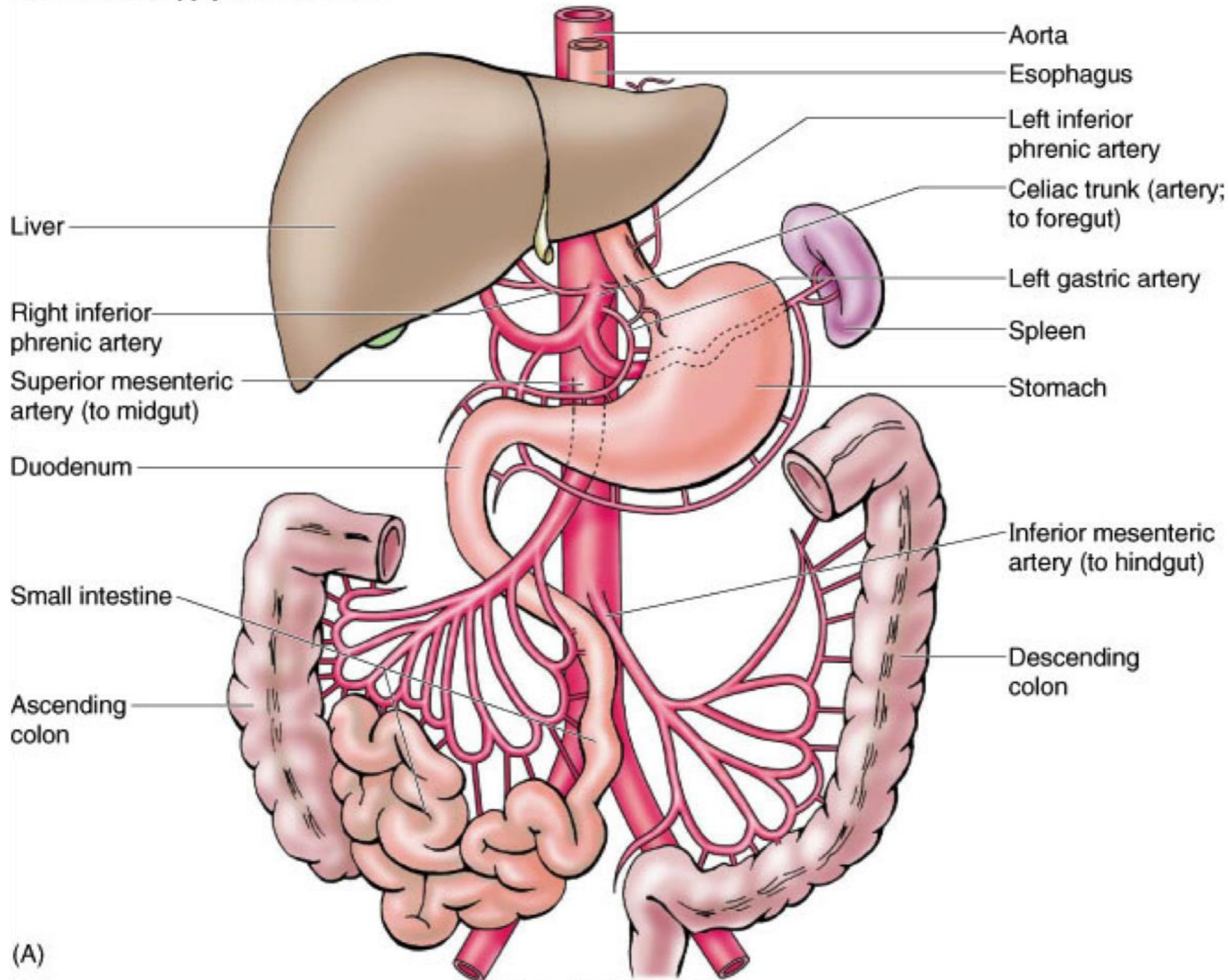
Ileum



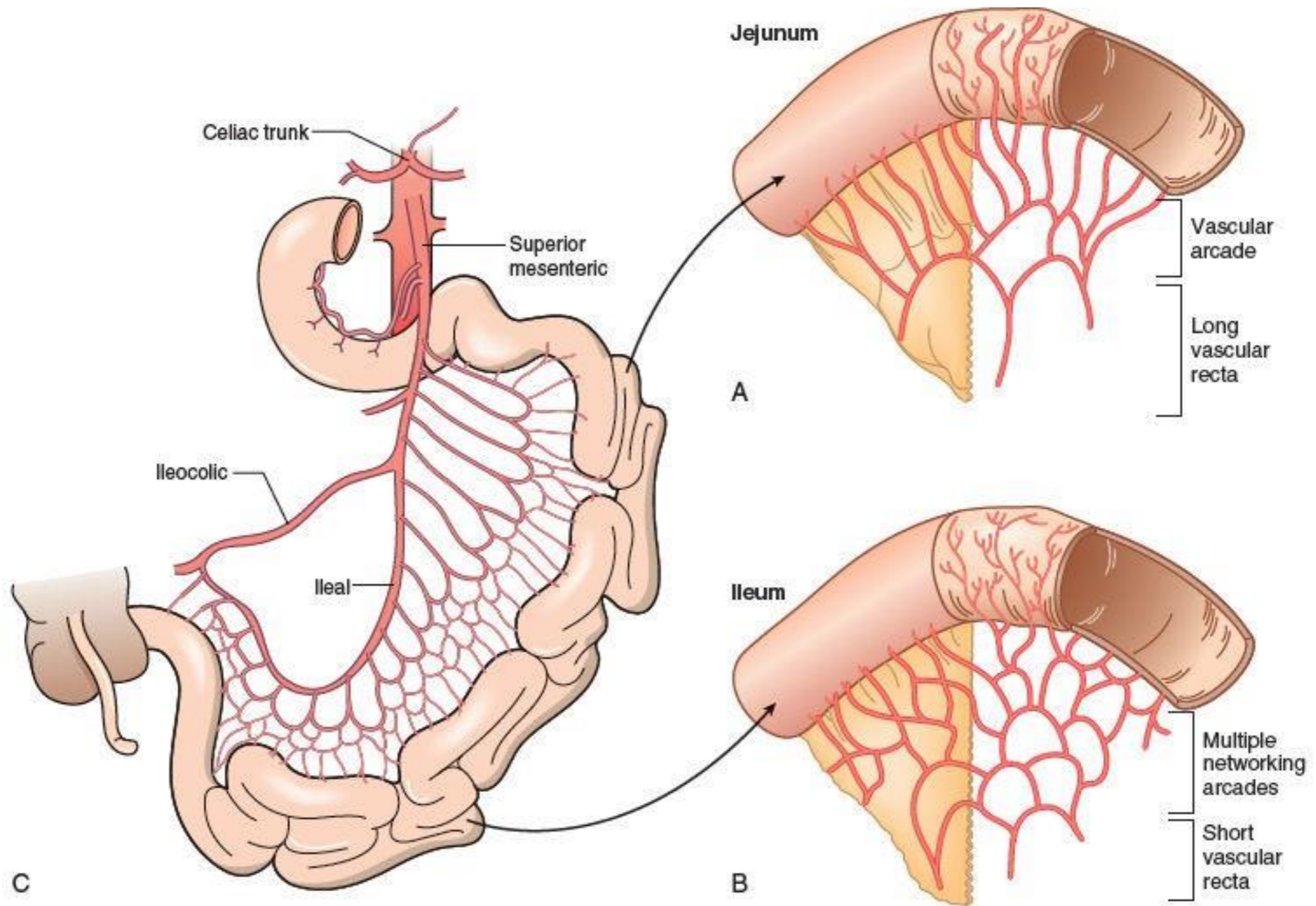
- More complex arterial arcades
- Shorter Vasa Recta
- Less plicae circulares, thinner less folded
- Fat present in mesentery

3. Blood supply of the Jejunum and Ileum

2.28. Arterial supply of the GI tract.



3. Blood supply of the Jejunum and Ileum



4. Venous drainage of the Jejunum and Ileum

