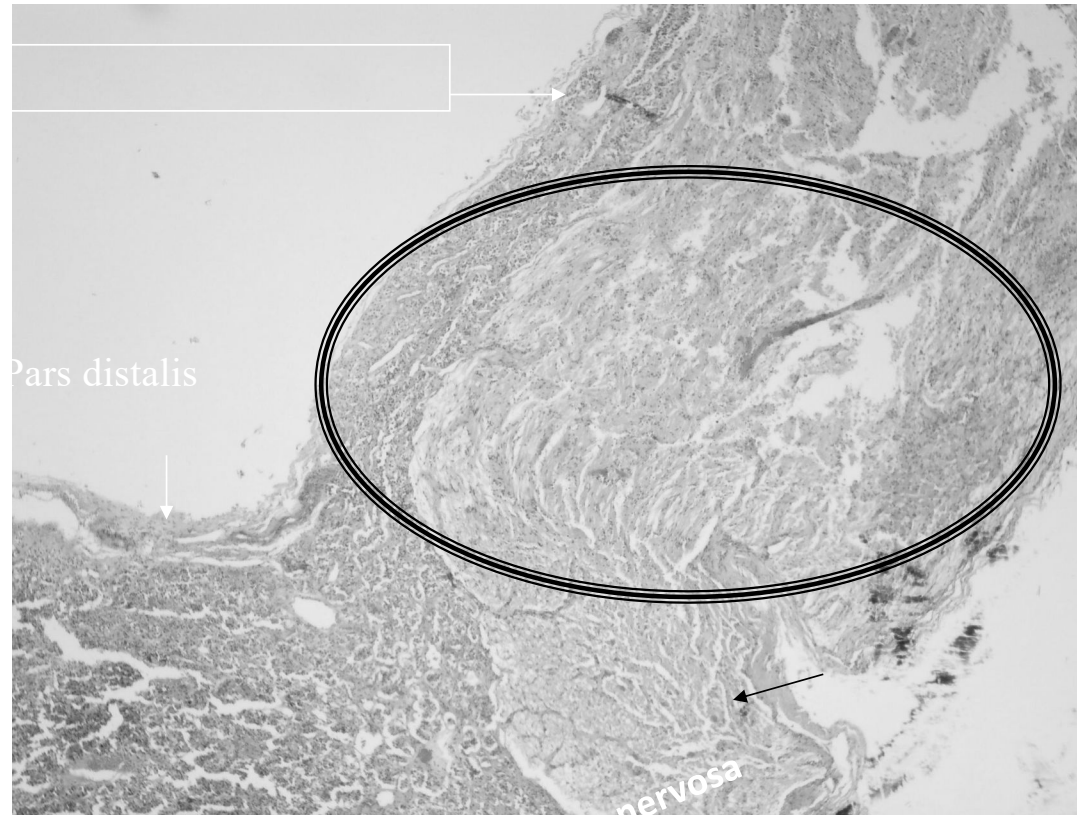


Hypophyseal stalk

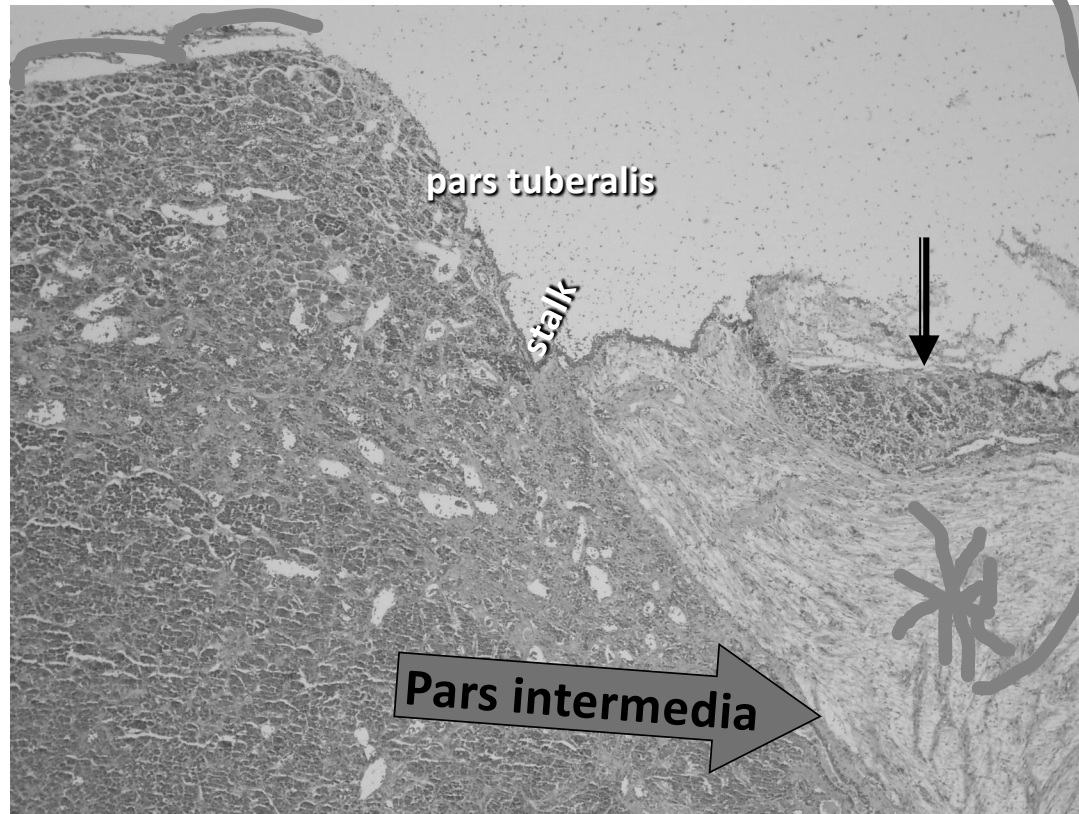
pars tuberalis



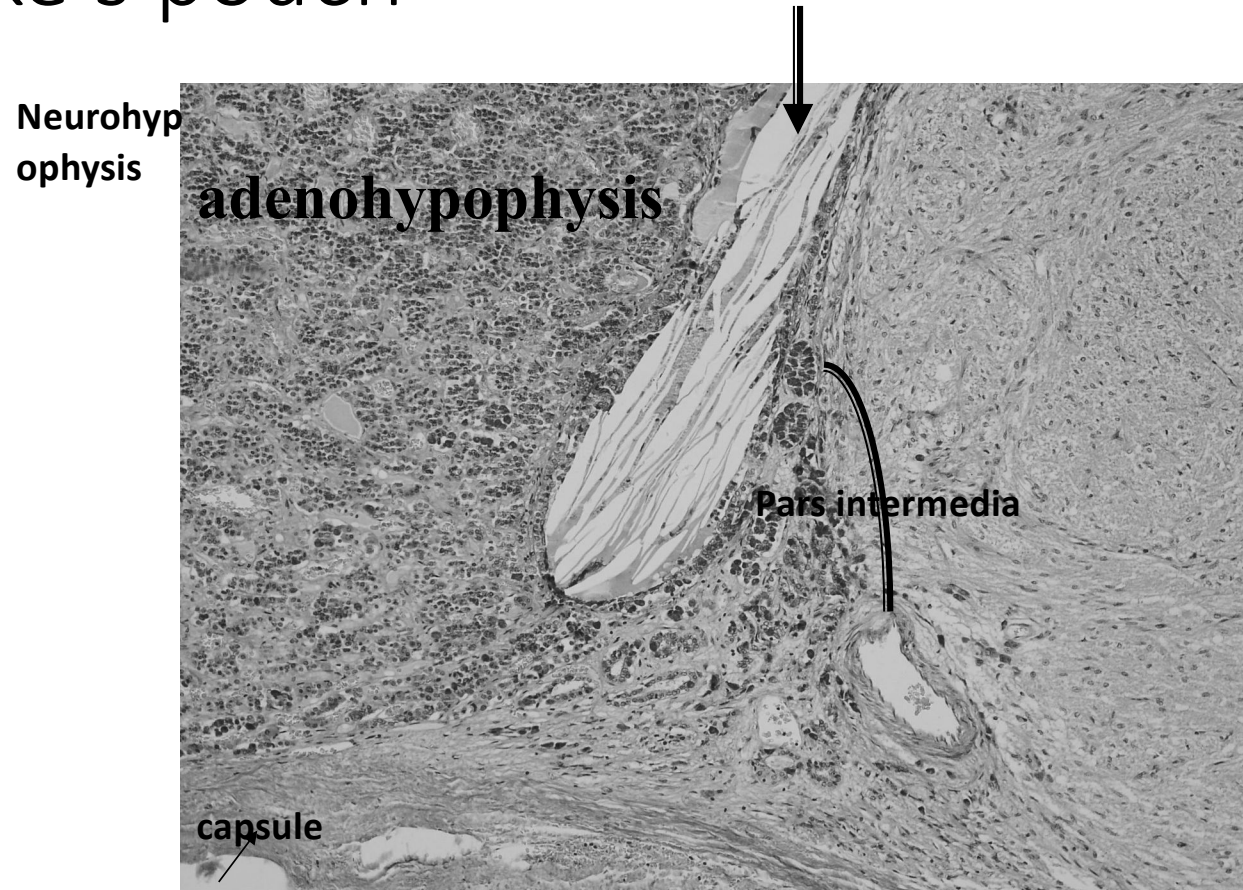
Pars distalis

nervosa

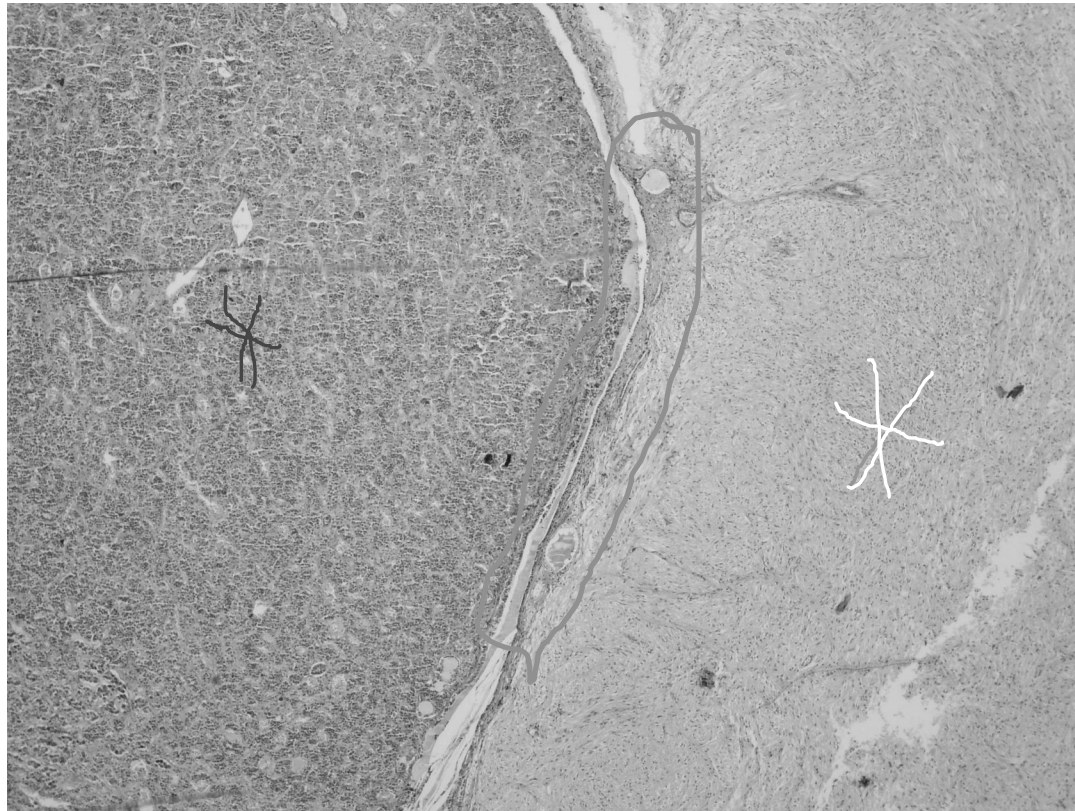
Pars distalis Pars nervosa



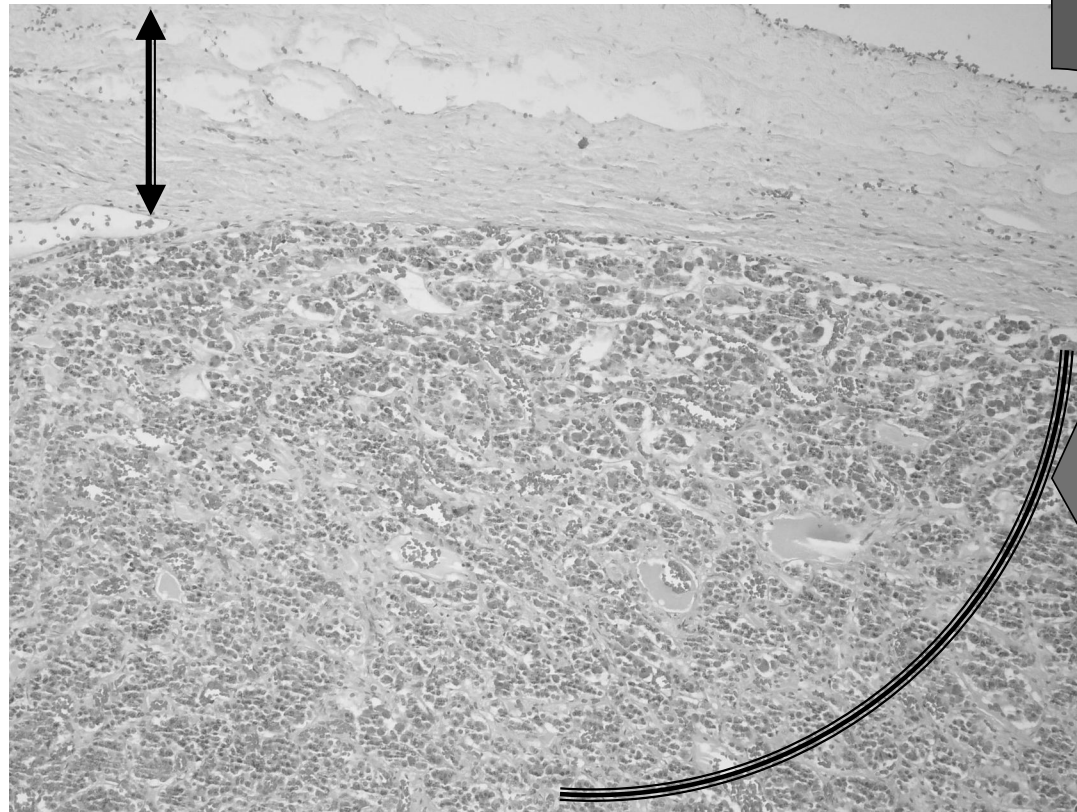
Rathke's pouch



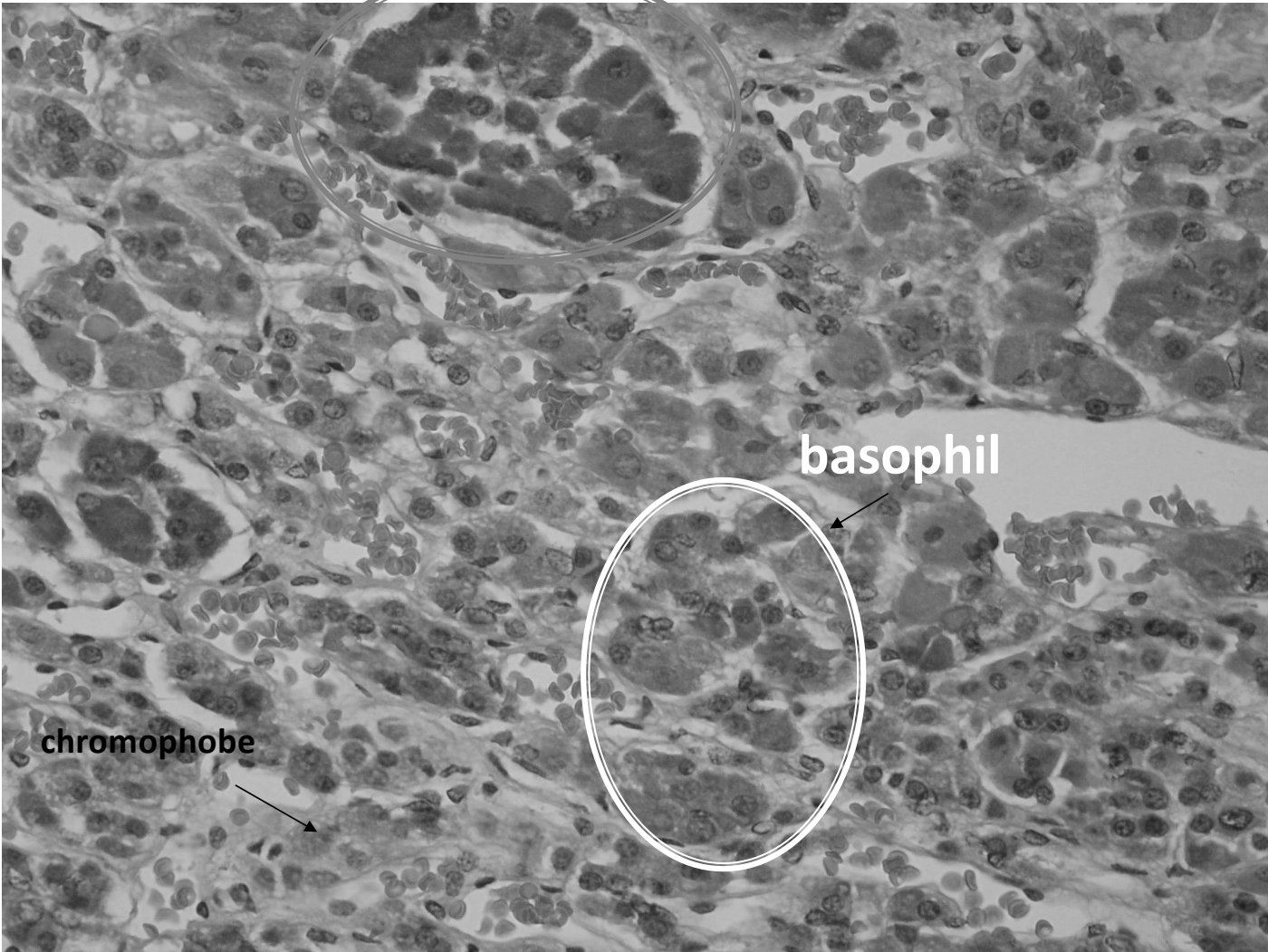
P.distalis P.intermedia P.nervosa
(Pearse trichrome stain)



Capsule – adenohypophysis
H&E stain

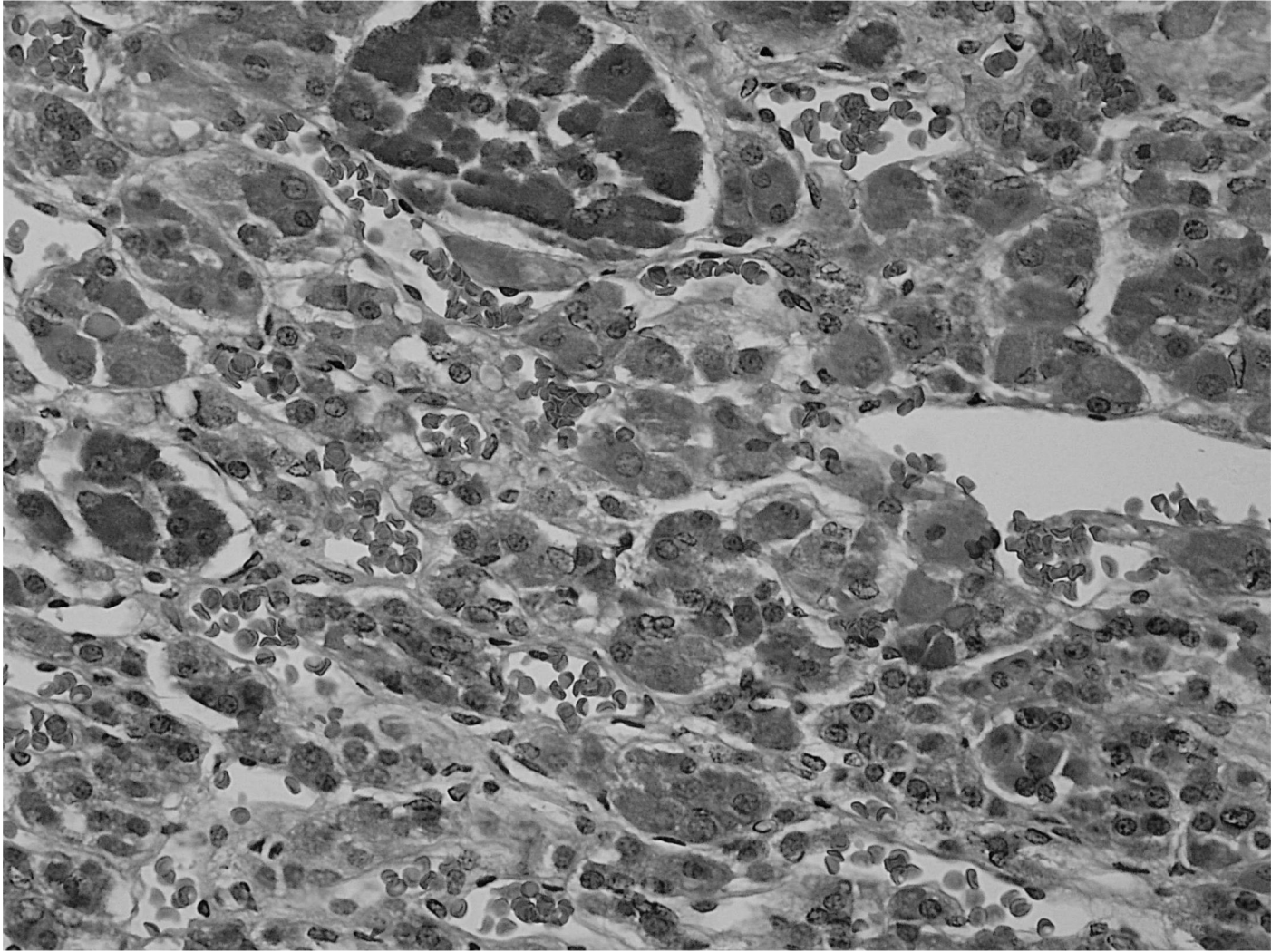


acidophil



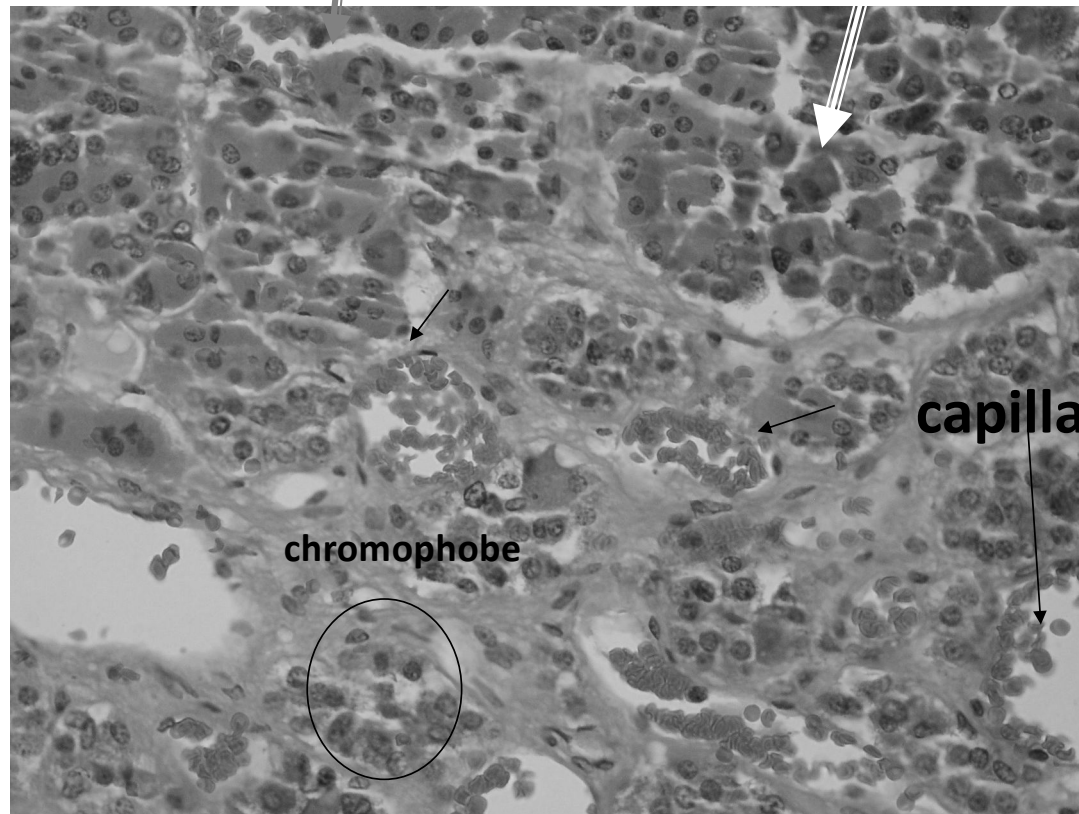
basophil

chromophobe



Acidophil

basophil



capillaries

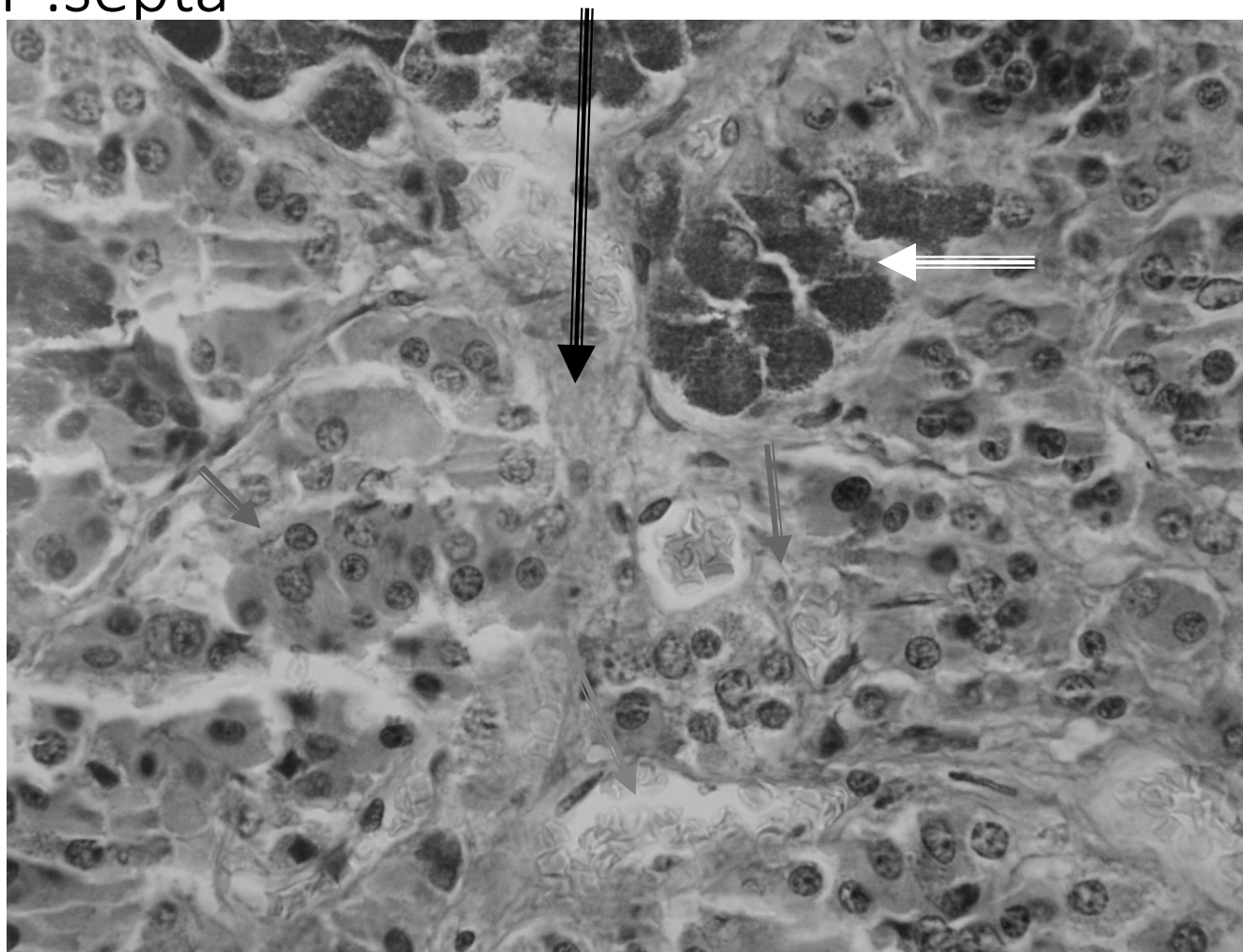
chromophobe

B. Ac. Ch.

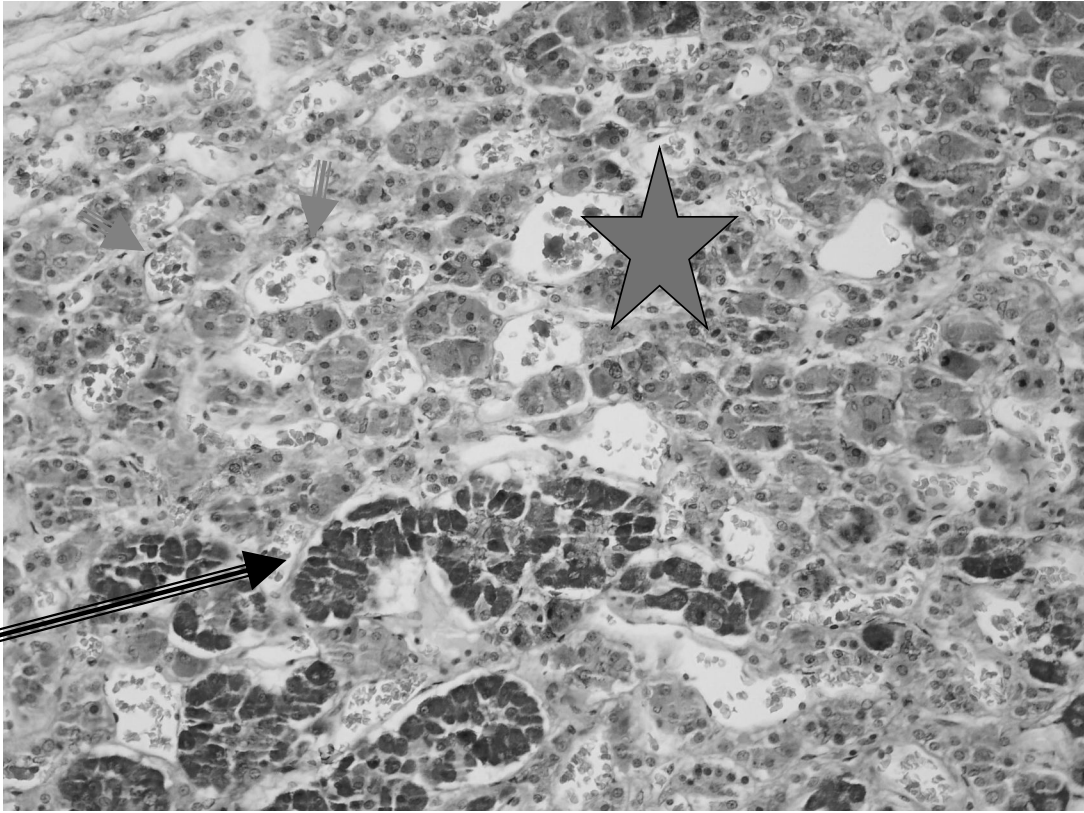


C.T.

C.T .septa



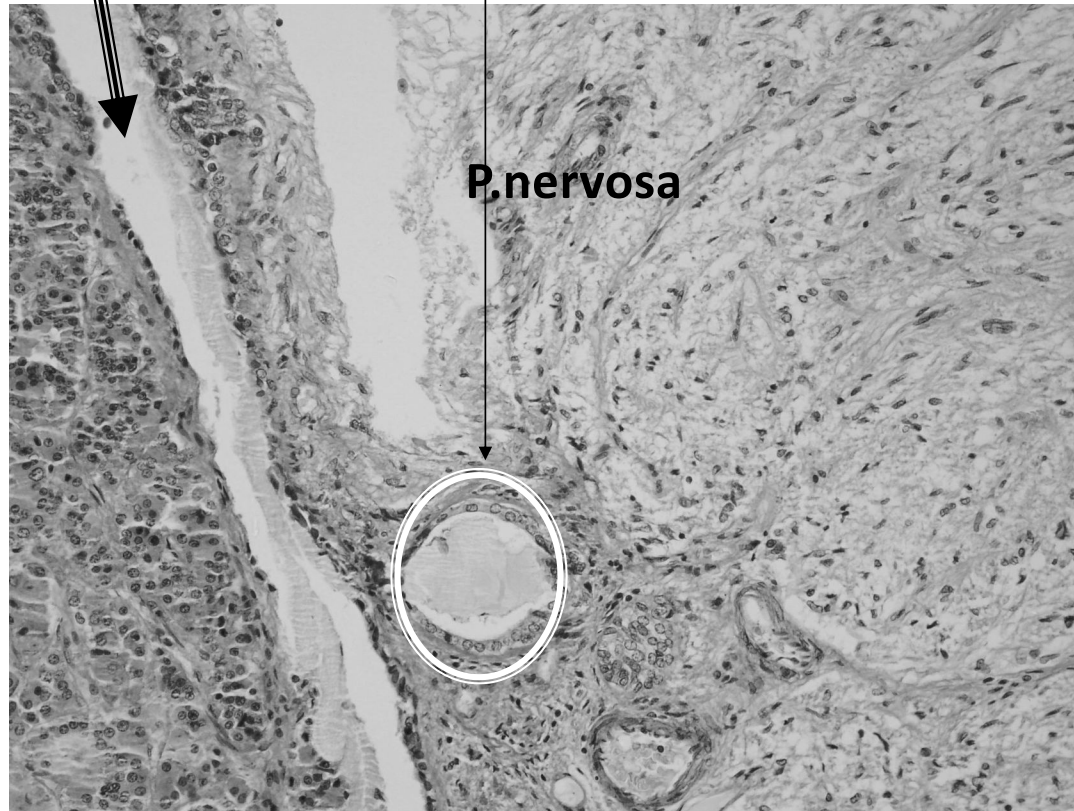
Chromophobe★



basophil

Rathke's pouch

follicles of p.intermedia



P.distalis

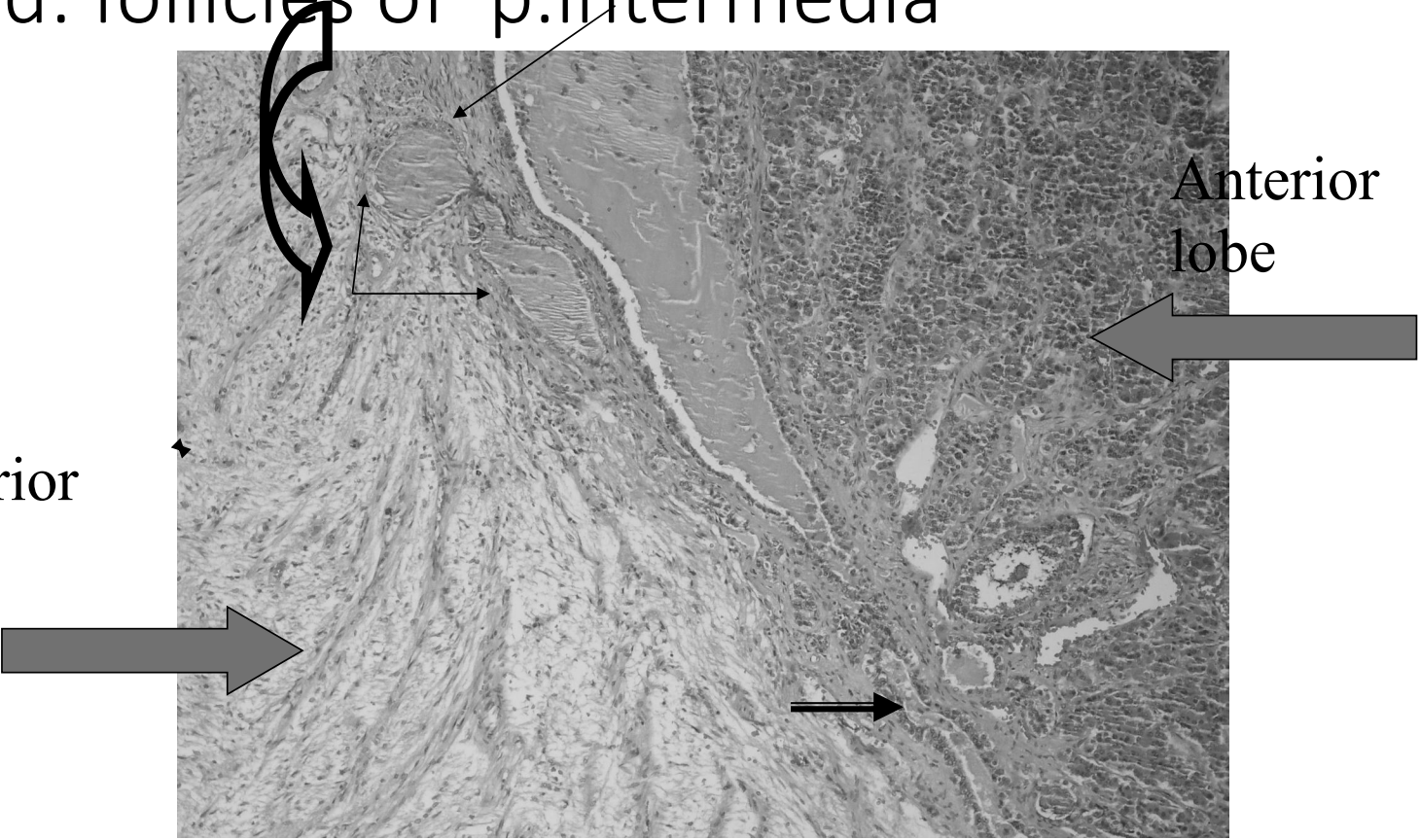
P.nervosa

H&E stain pitutary gl.

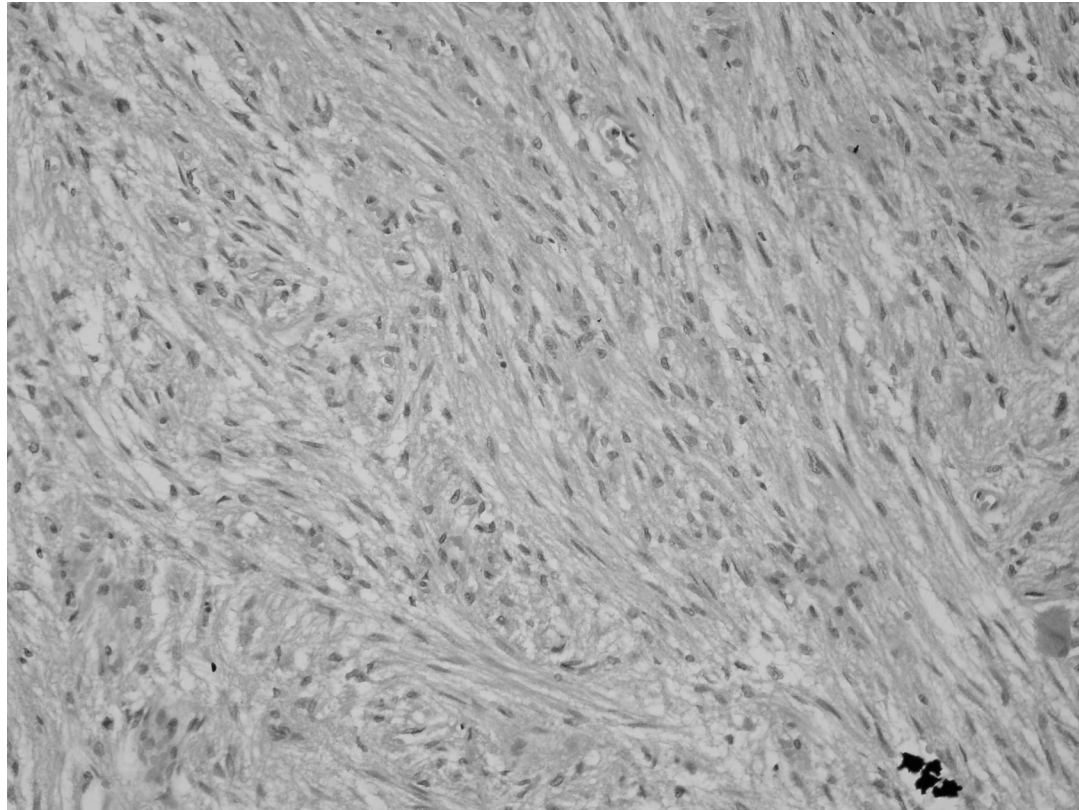
Colloid: follicles of p.intermedia

Posterior
lobe

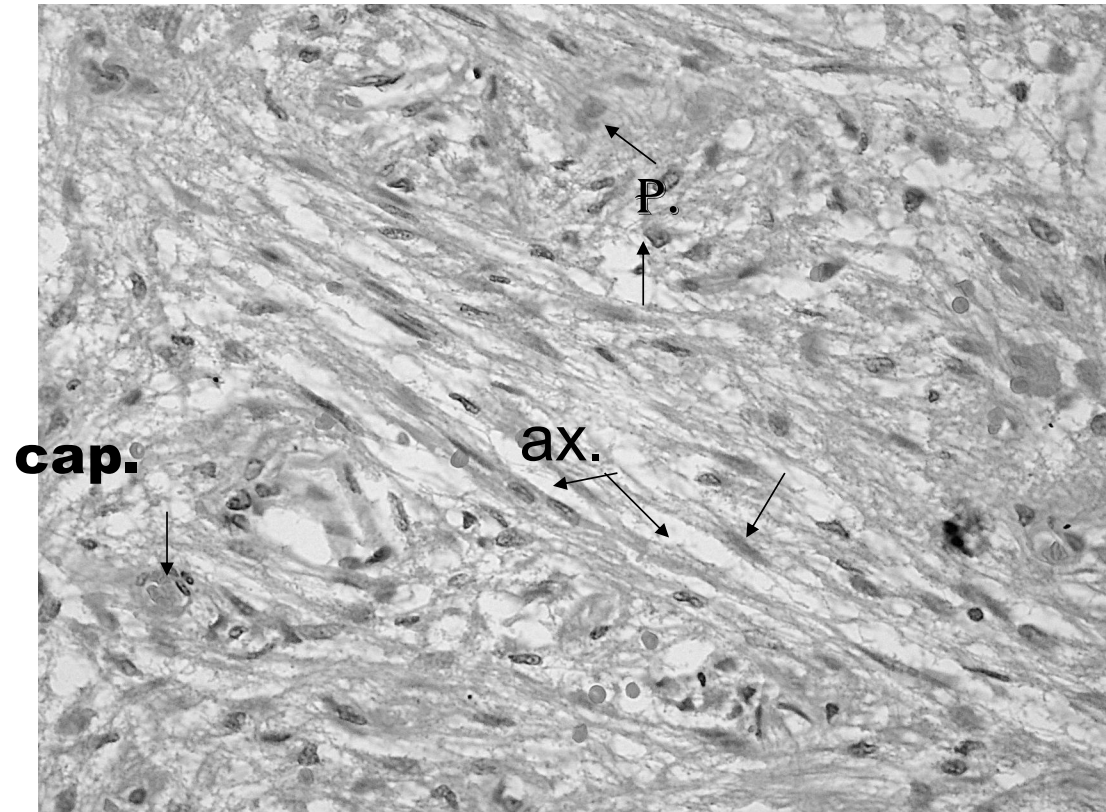
Anterior
lobe

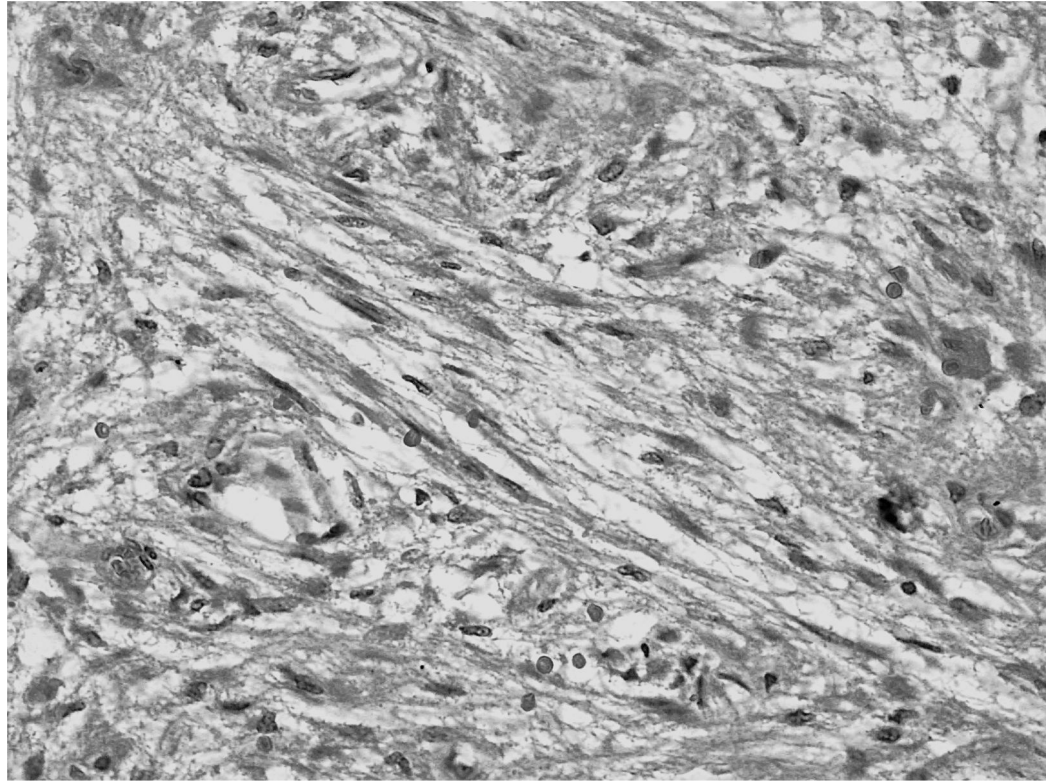


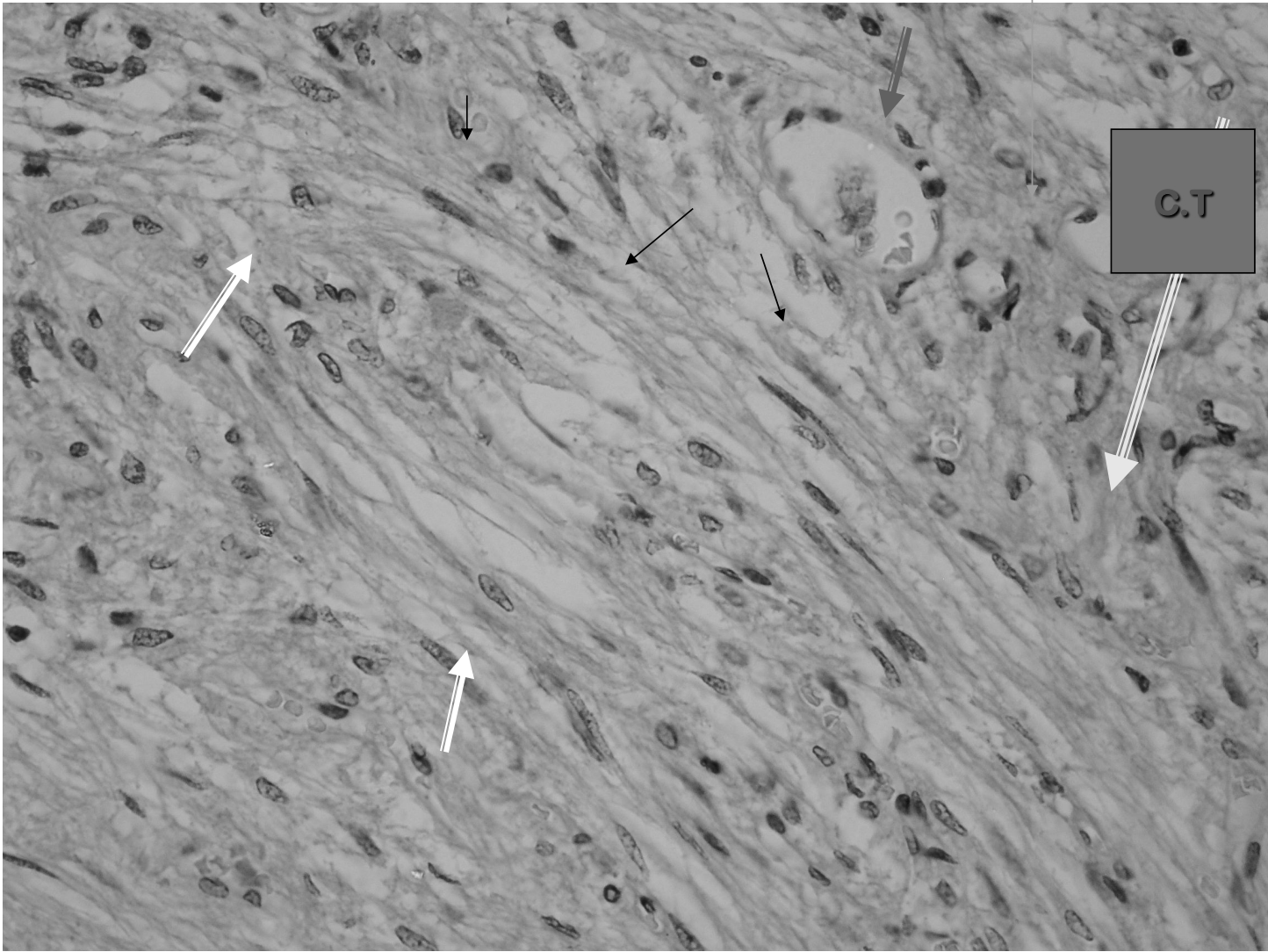
Neurohypophysis (posterior lobe)



Axons of unmyelinated nerve fibers, pituicytes, Hering bodies

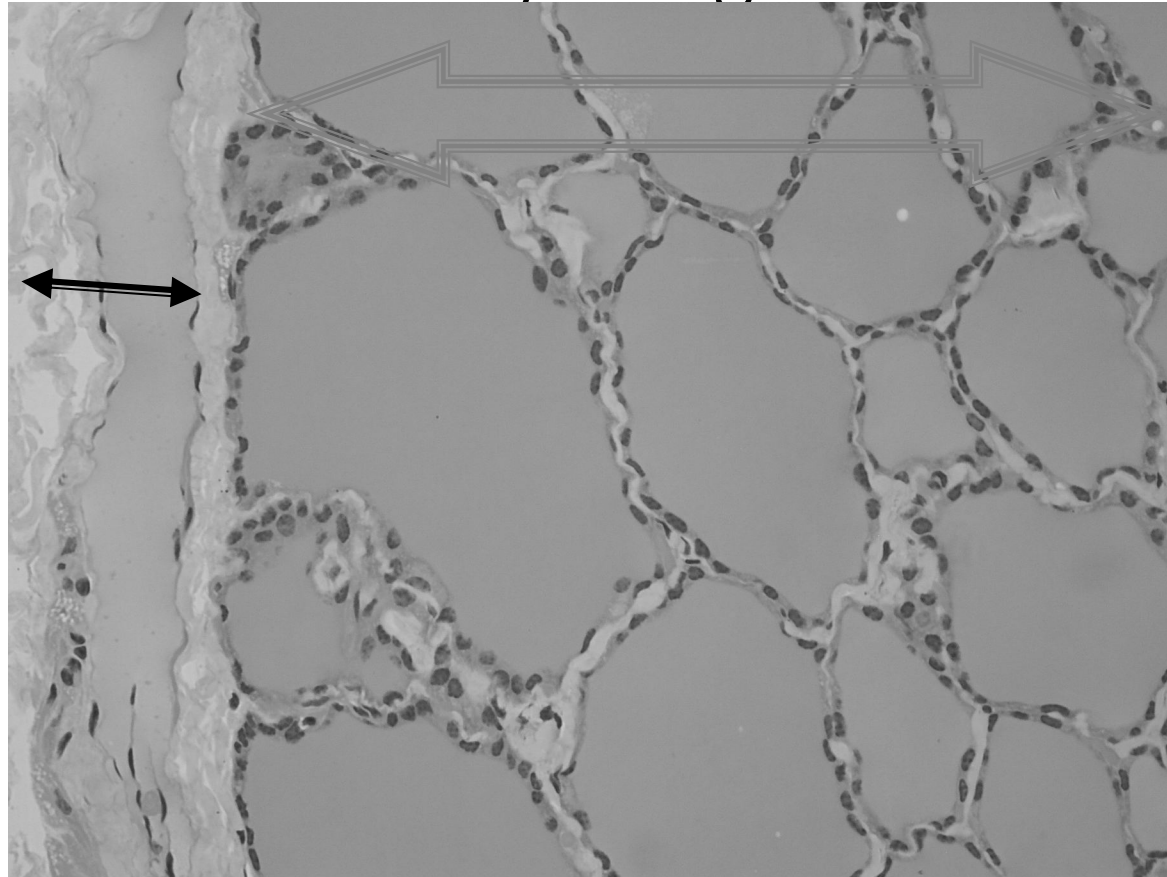




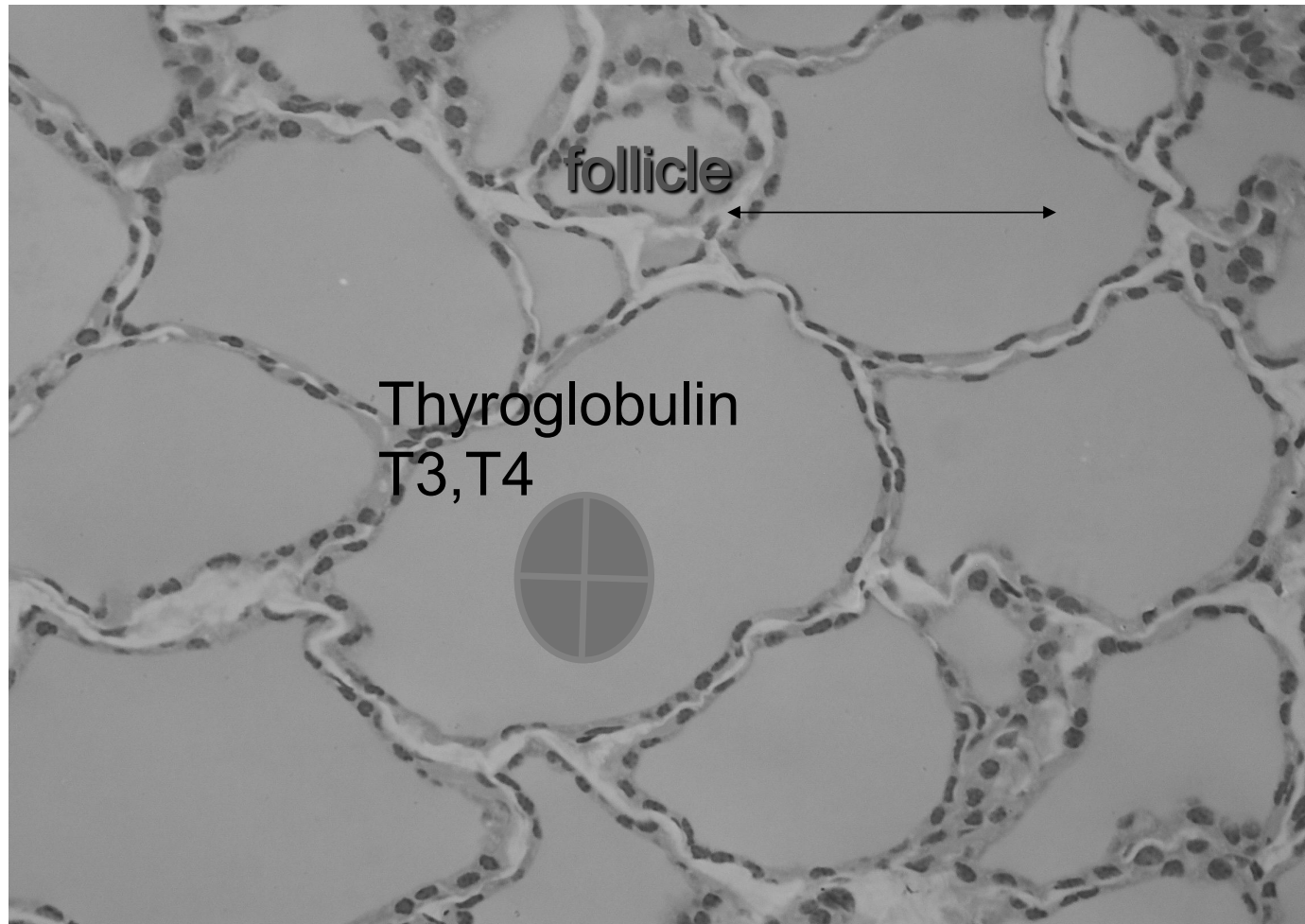


Thyroid gland

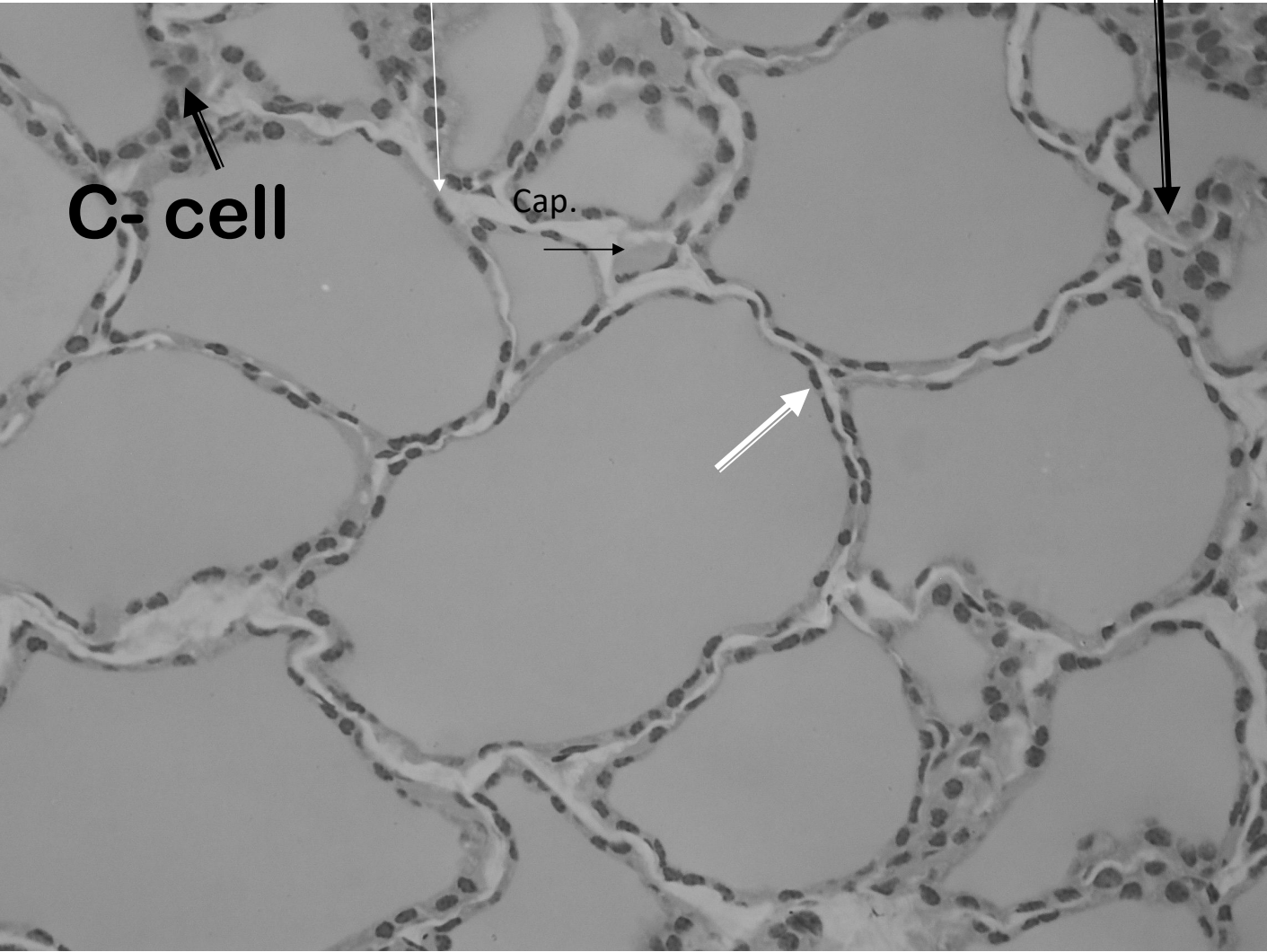
Capsule - follicles of thyroid gland

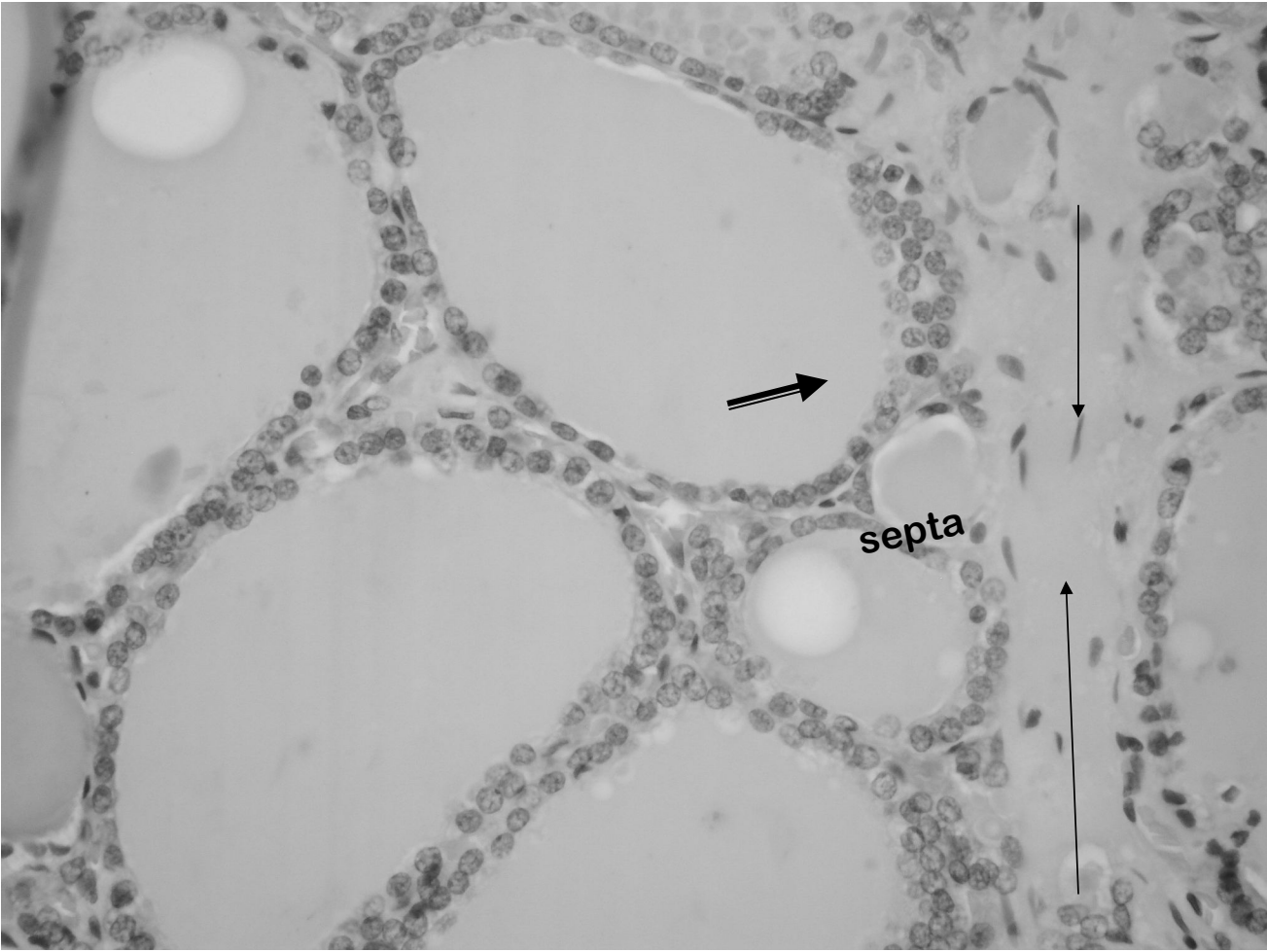


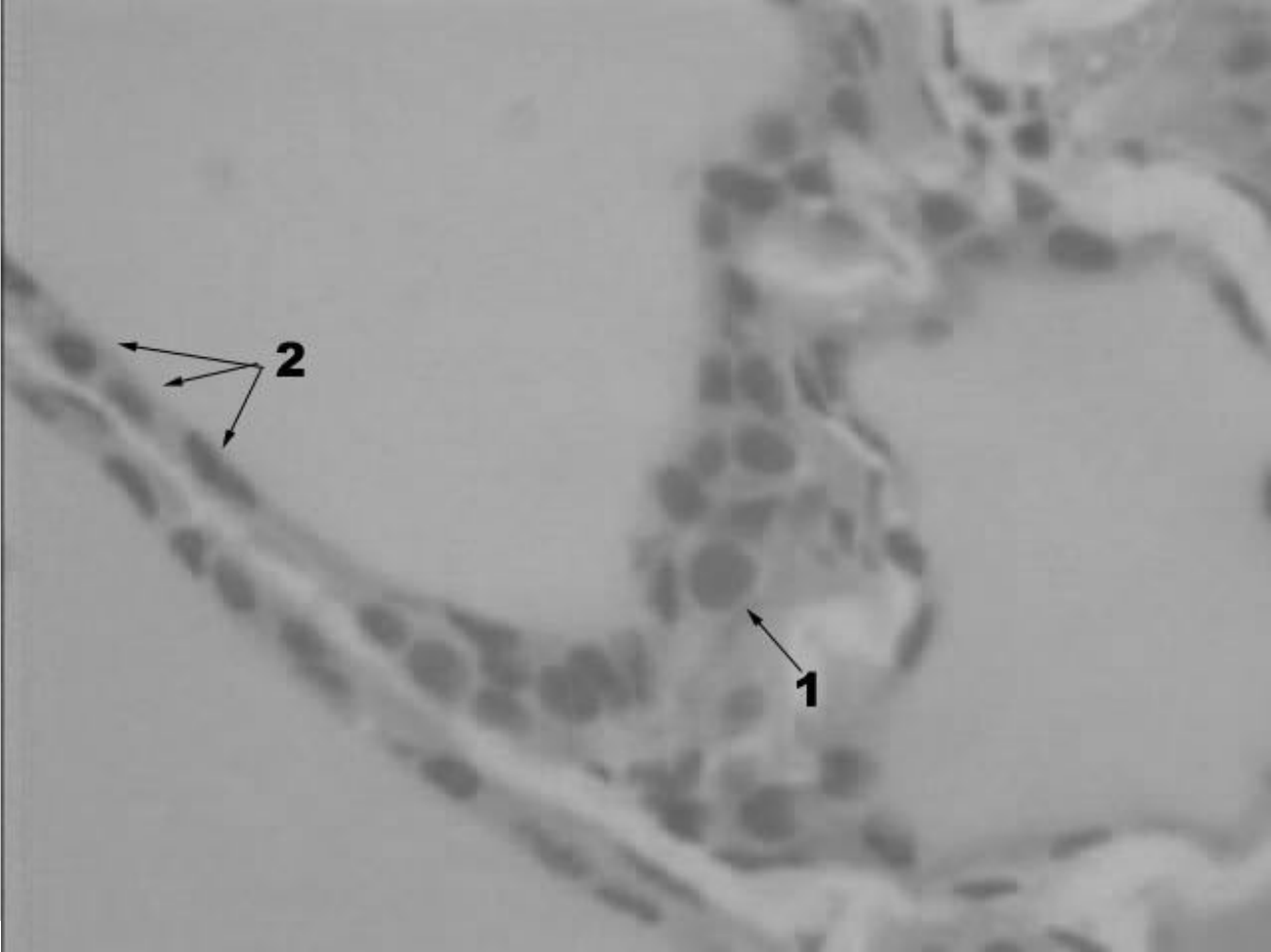
Resting(hypoactive)thyroid gl.



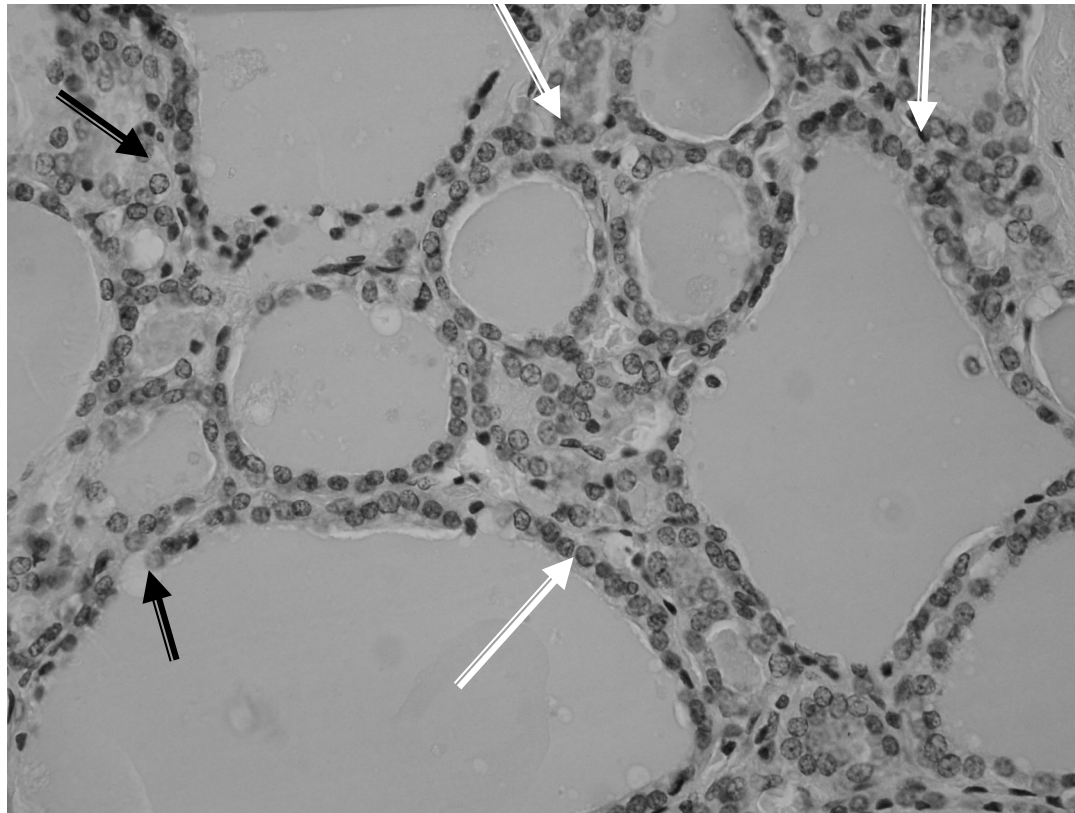
Simple squamous ep. C- cell

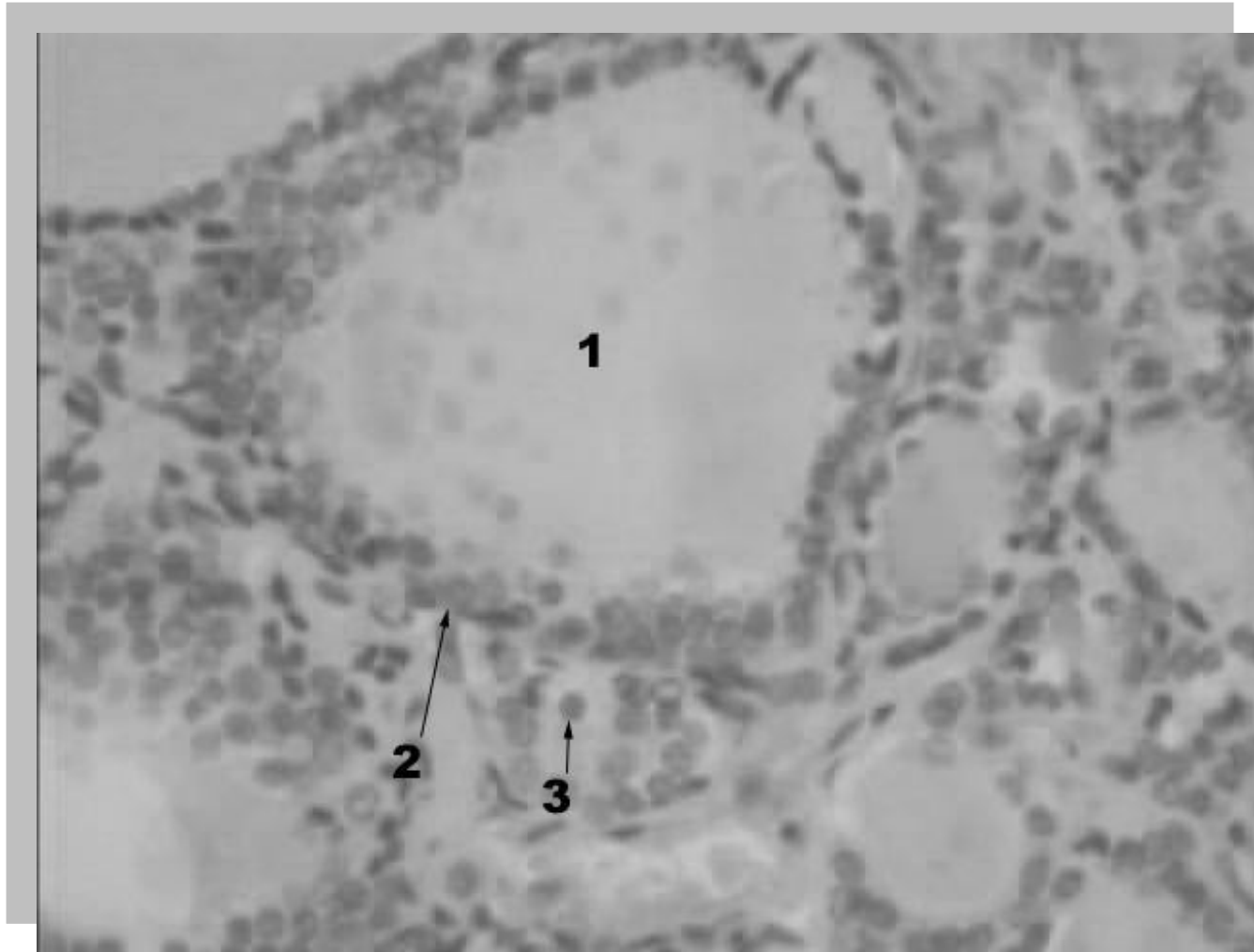






Active thyroid –simple cuboidal ep.
interfollicular cells

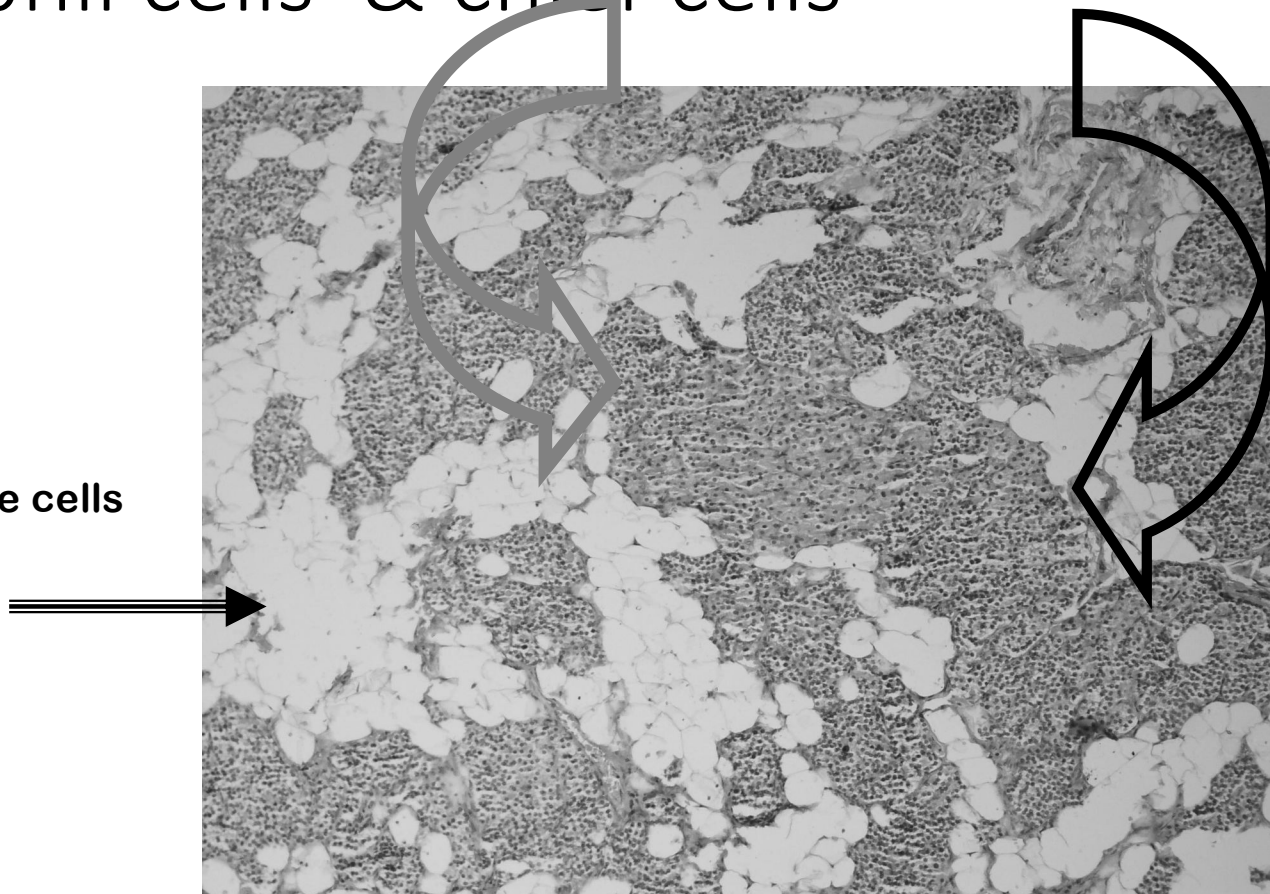


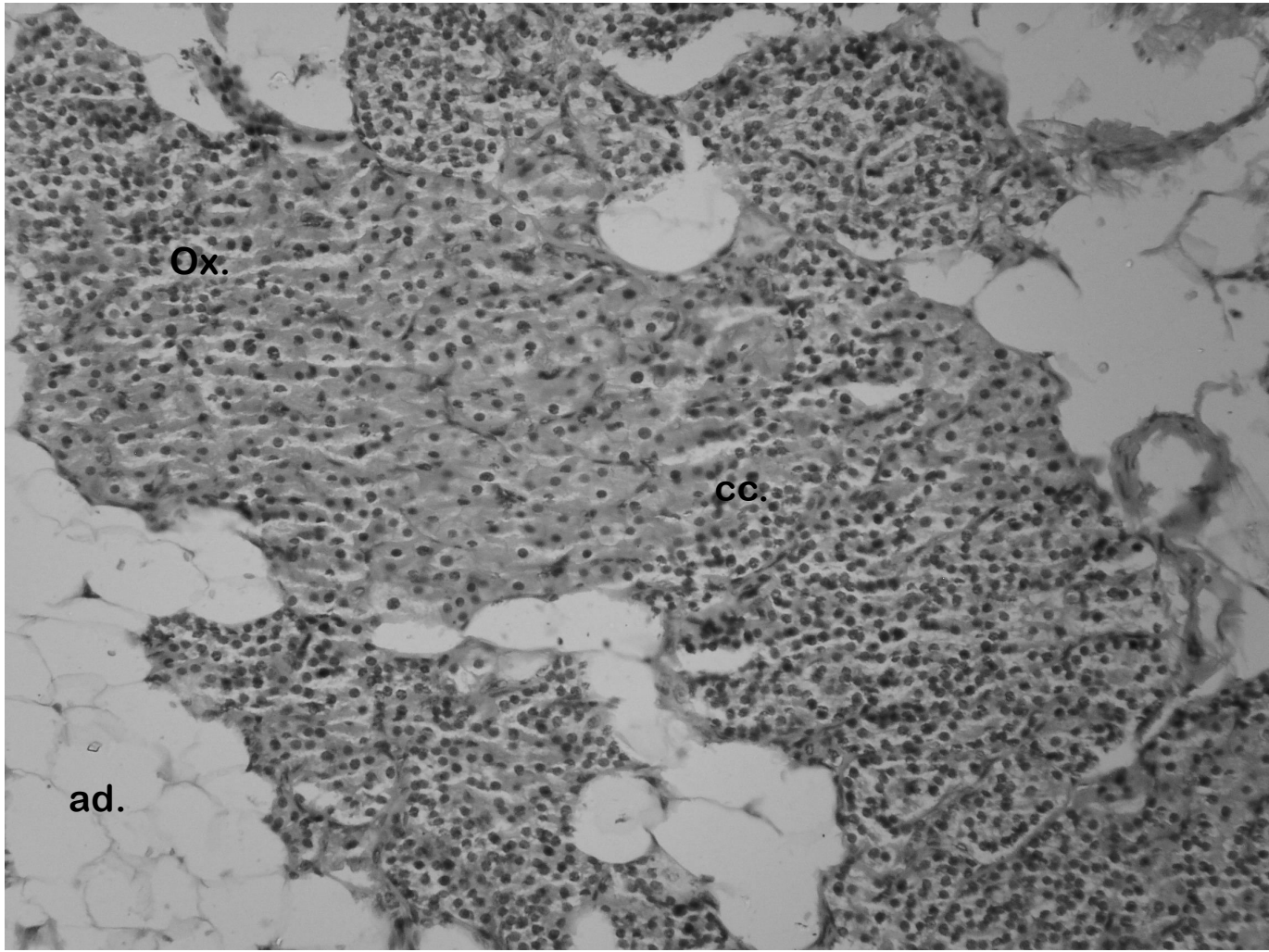


Parathyroid gland

Oxyphil cells & chief cells

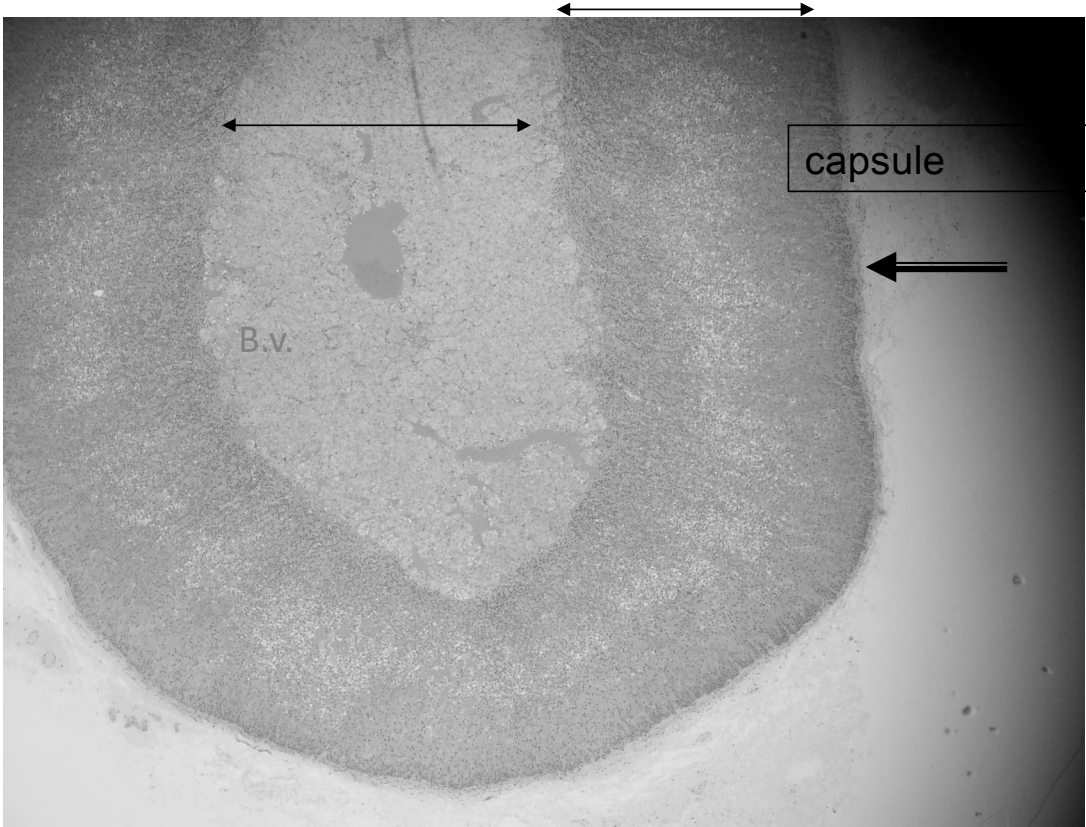
Adipose cells



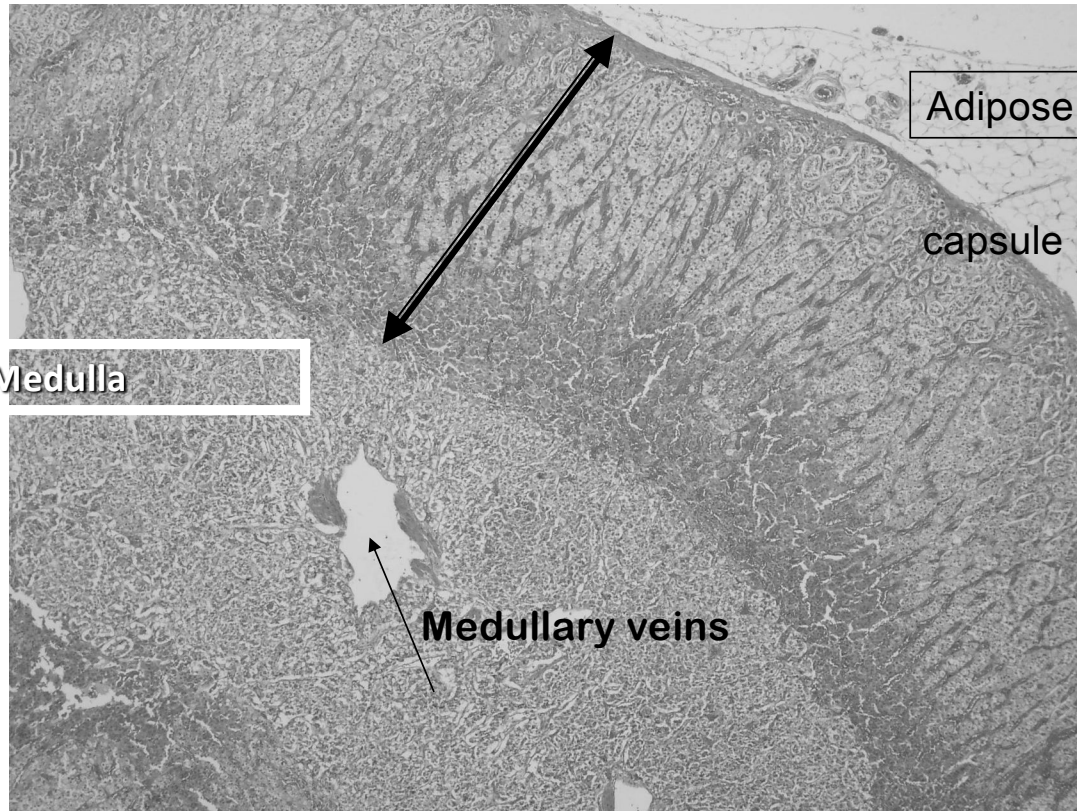


Adrenal gland

Medulla cortex



cortex



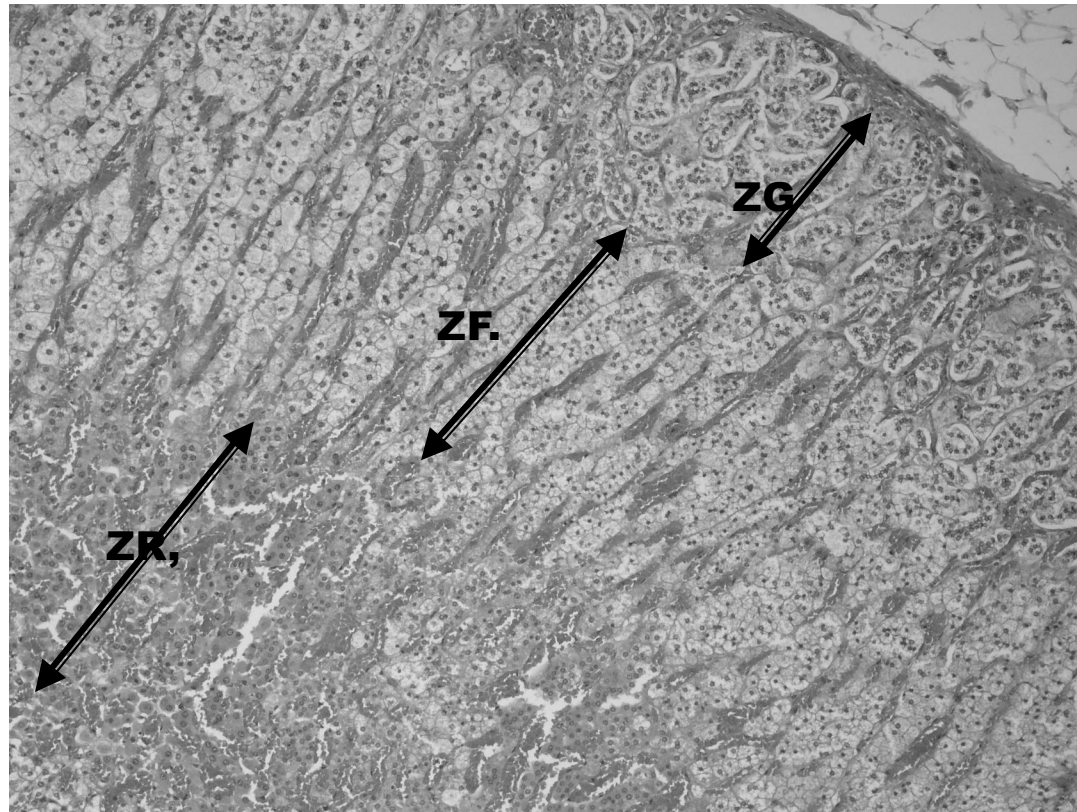
Adipose

capsule

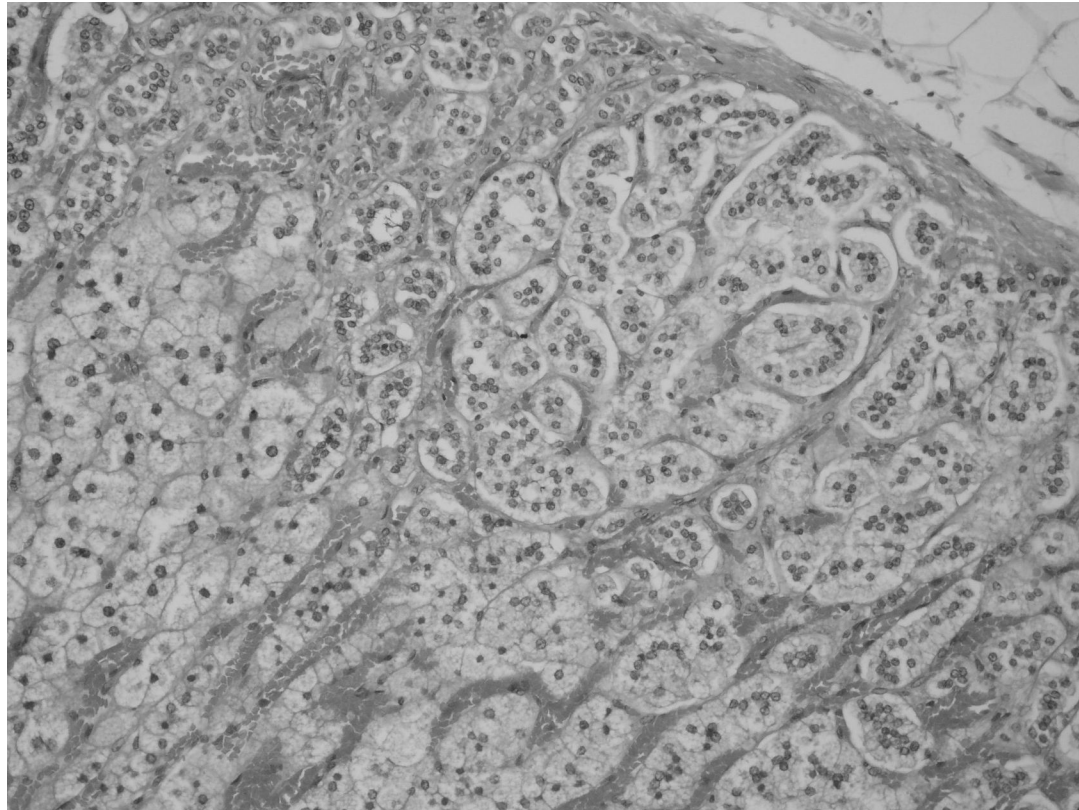
Medulla

Medullary veins

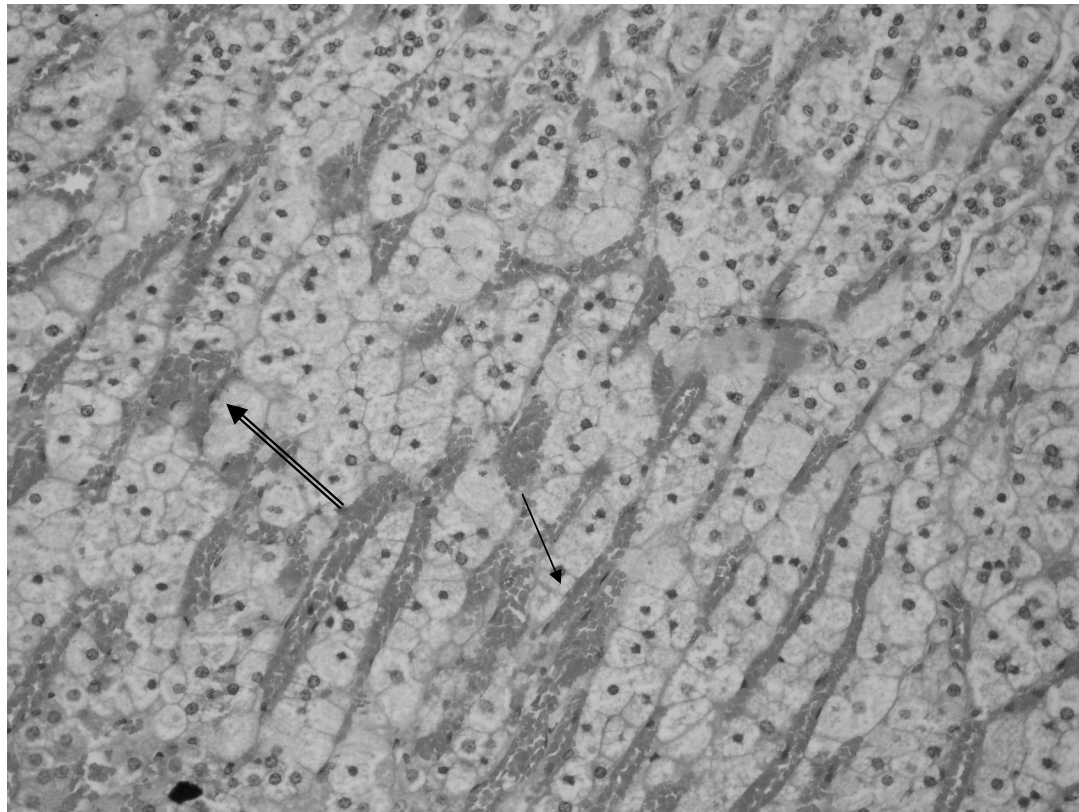
Zona Glomeulosa, Fasciculata&Reticularis



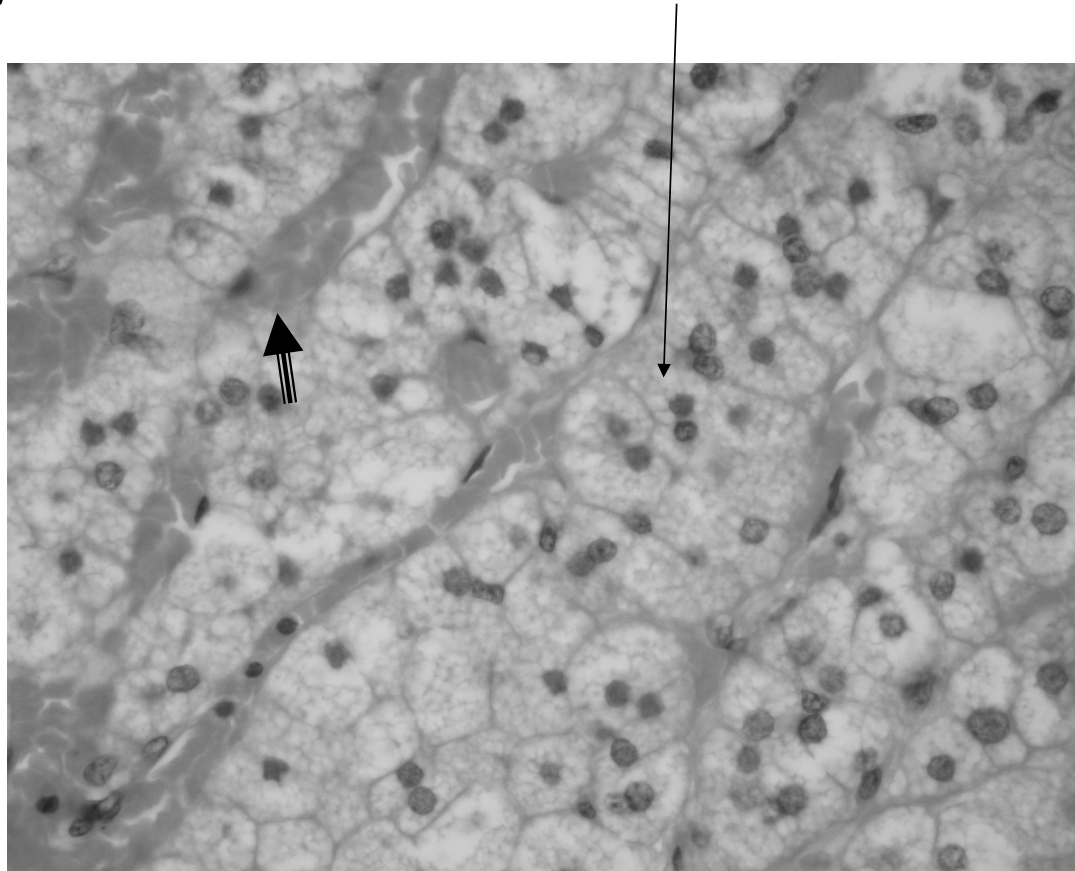
Zona Glomeulosa



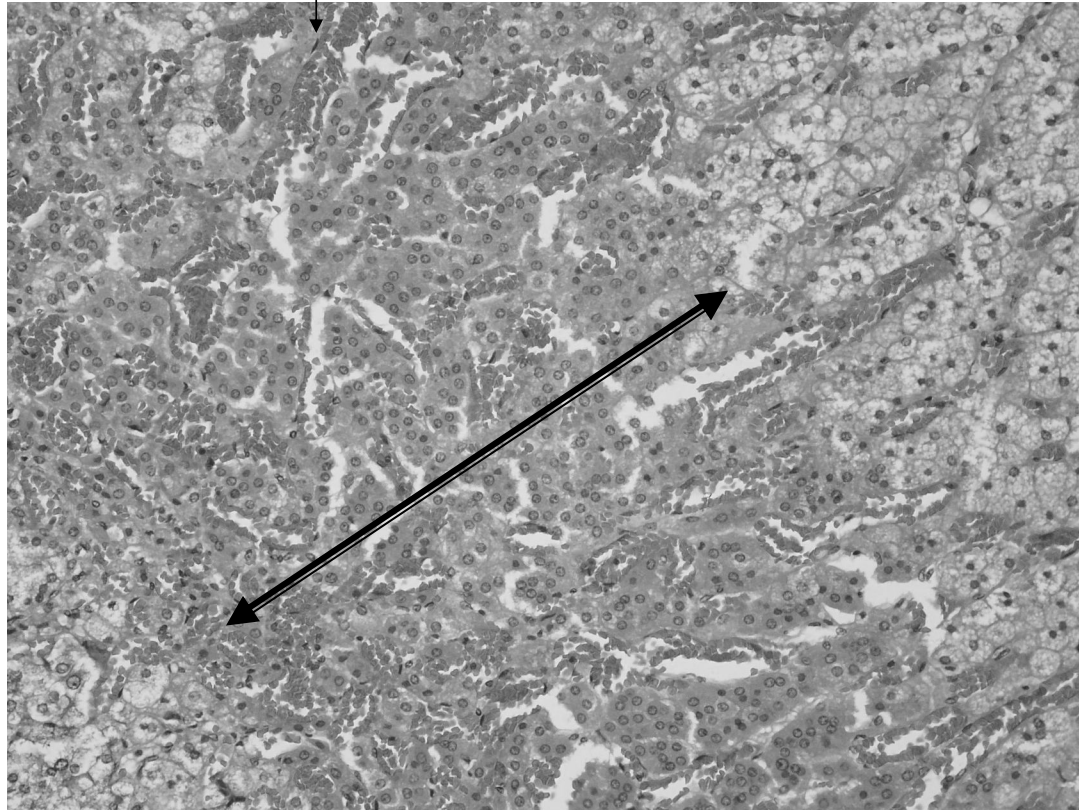
Zona Fasciculata-capillaries

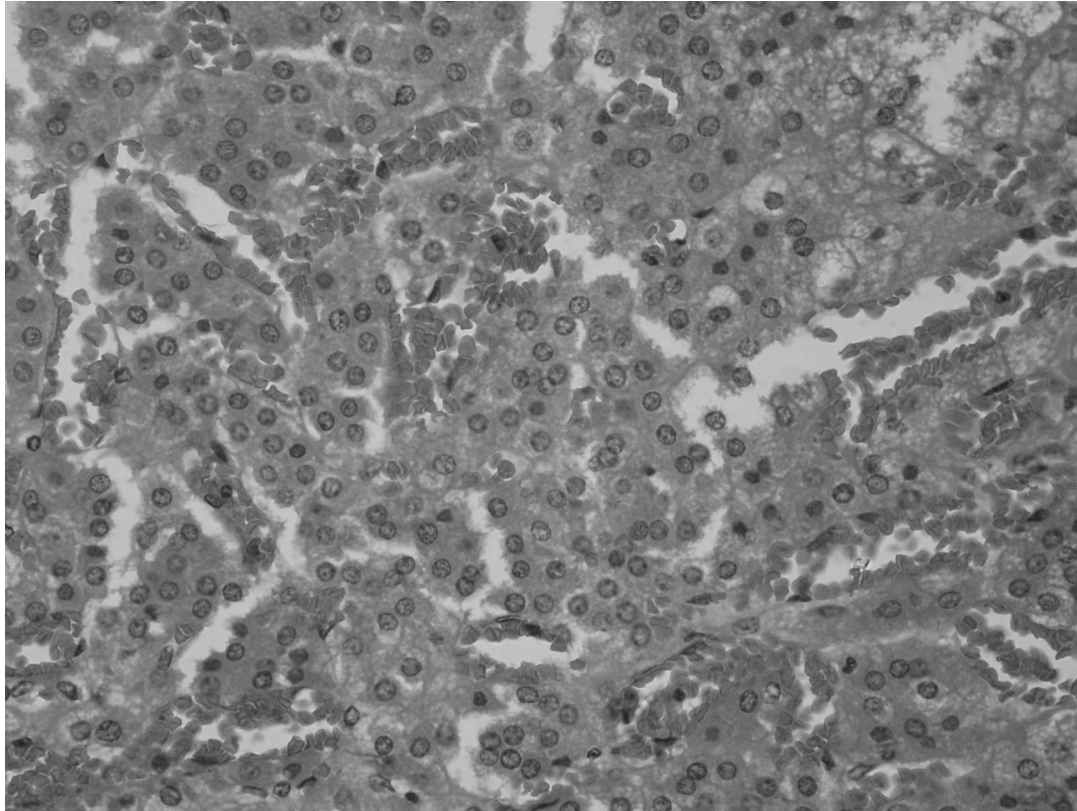


spongiocytes

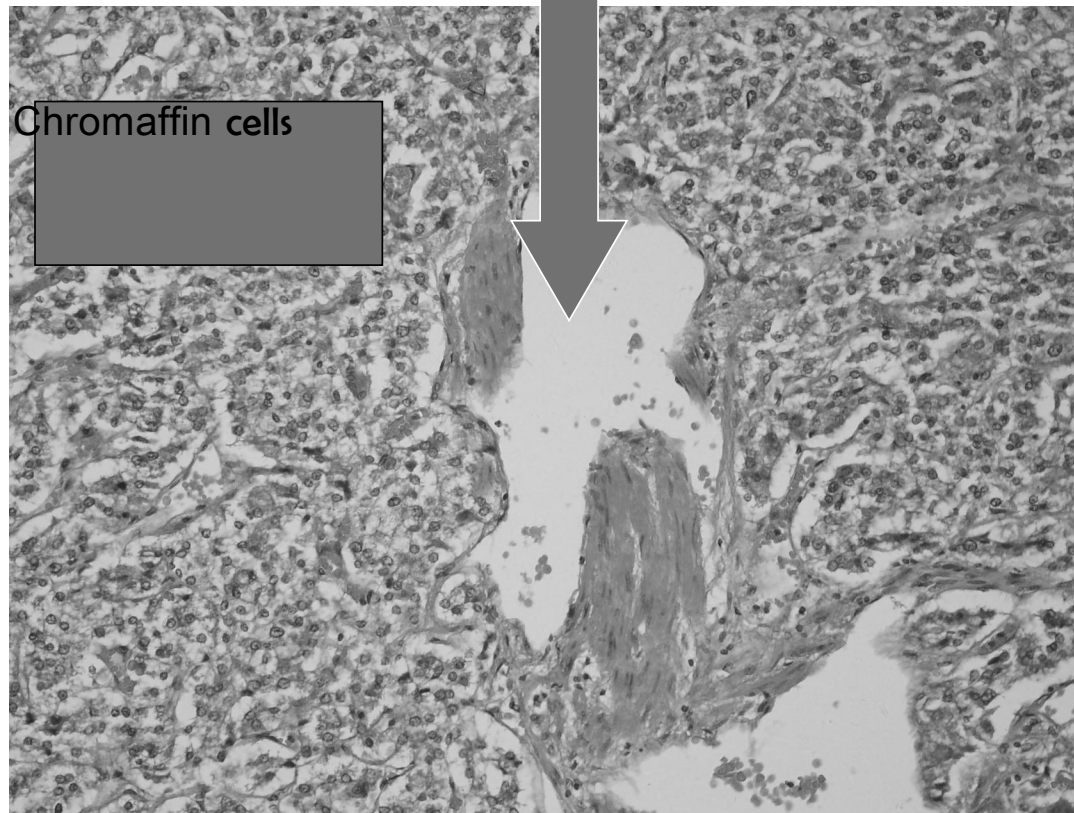


Zona Reticularis -capillaries

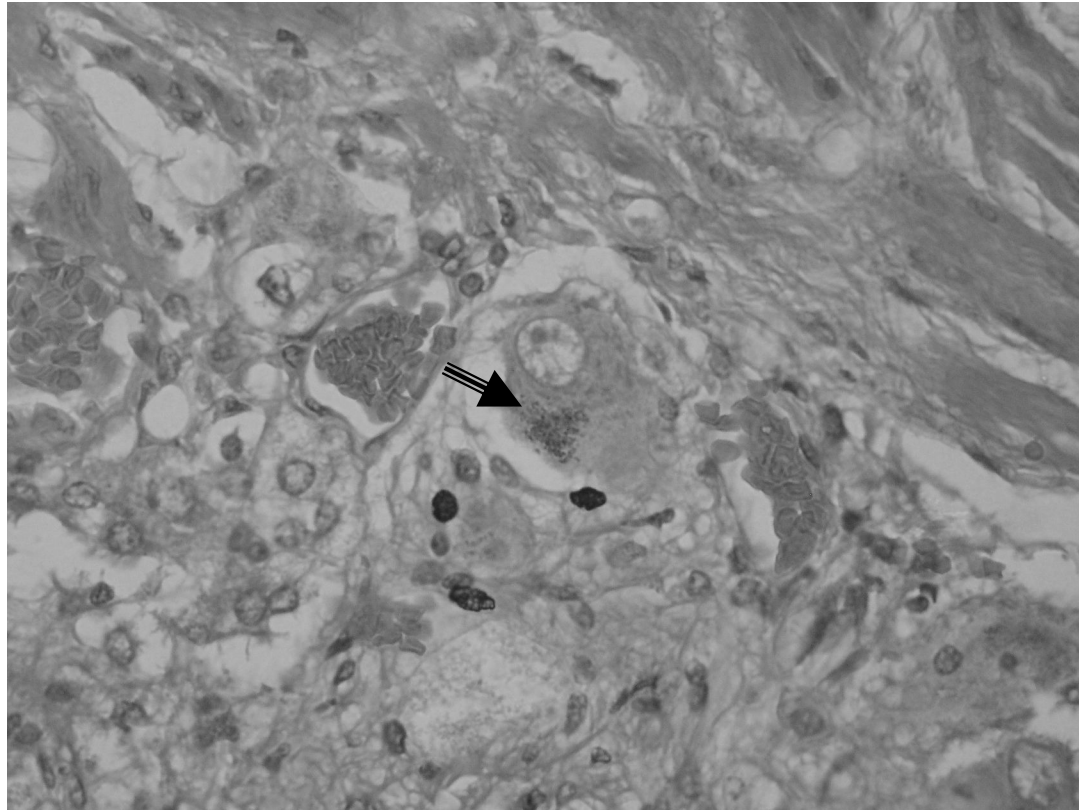




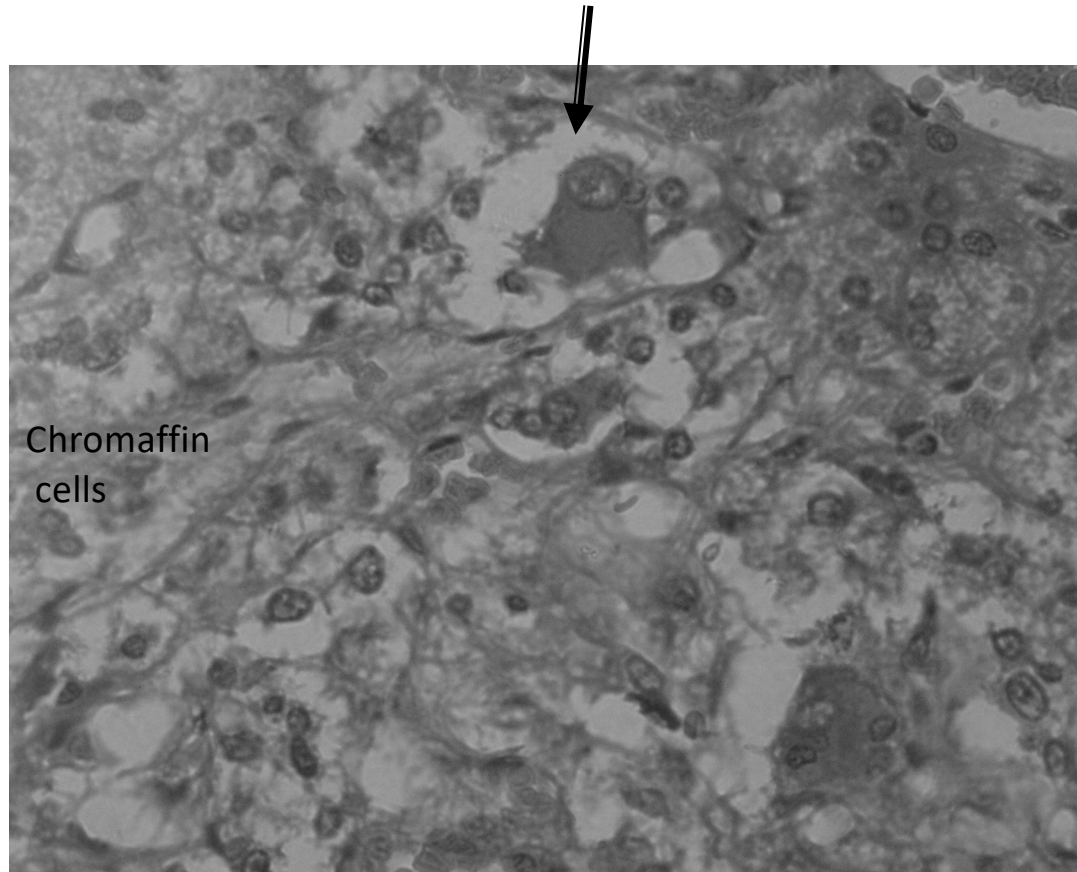
Medullary veins in adrenal medulla

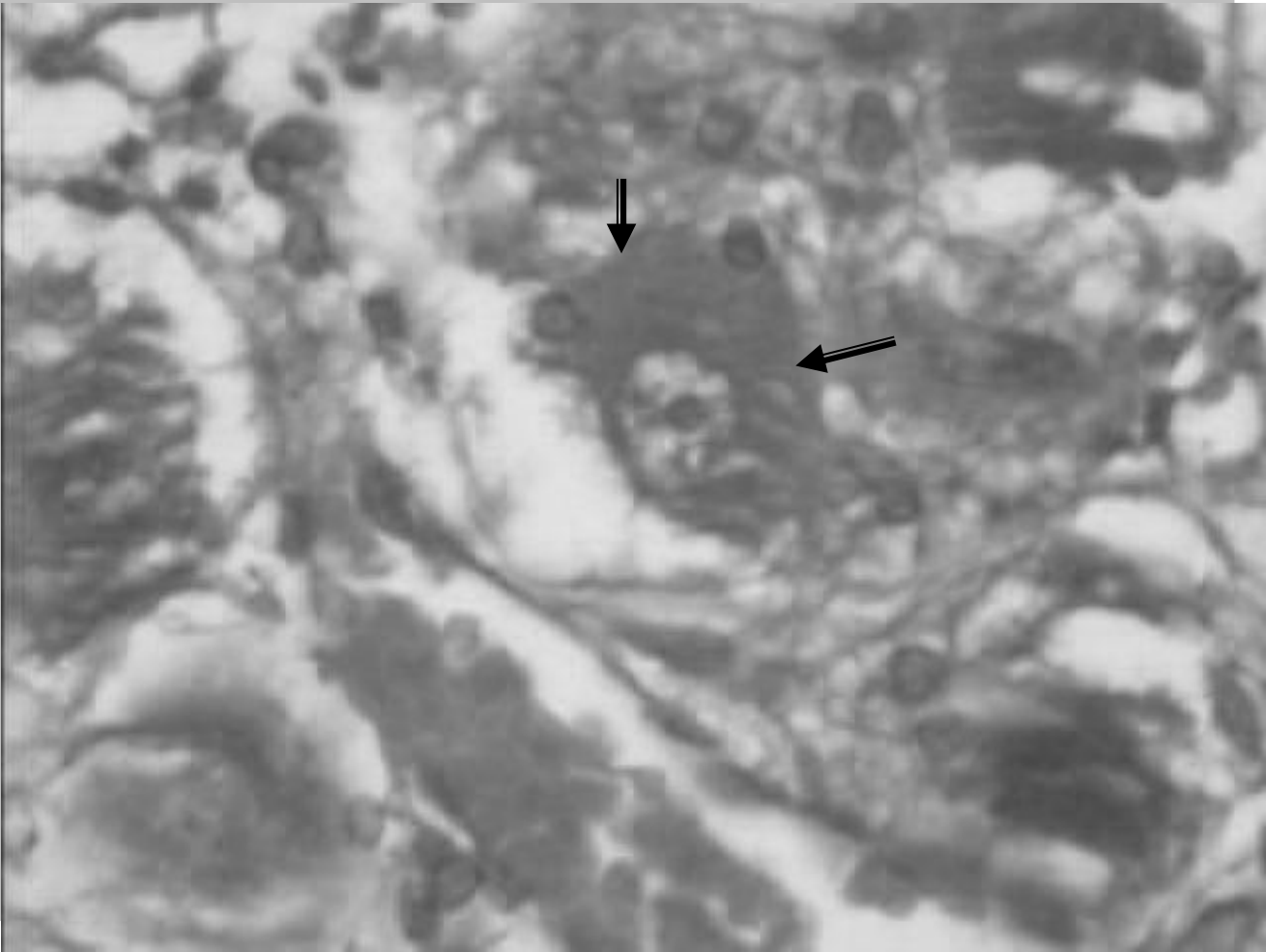


Lipofuschin in Ganglionic cells

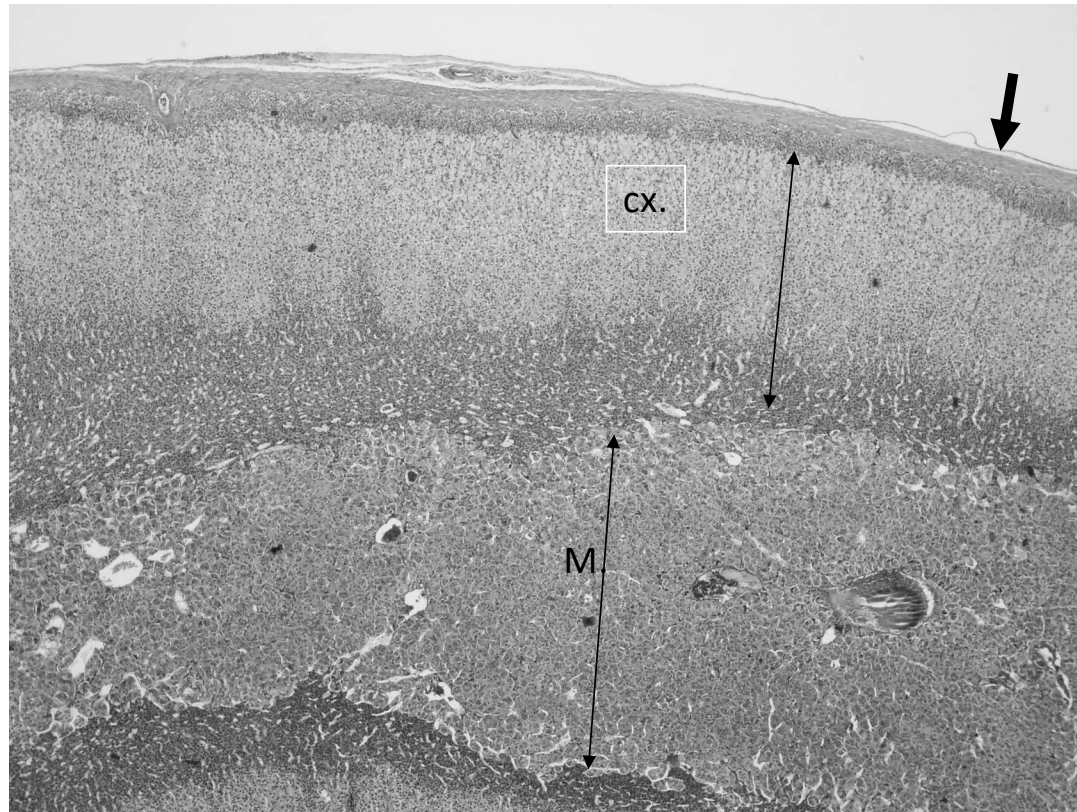


Ganglionic cells

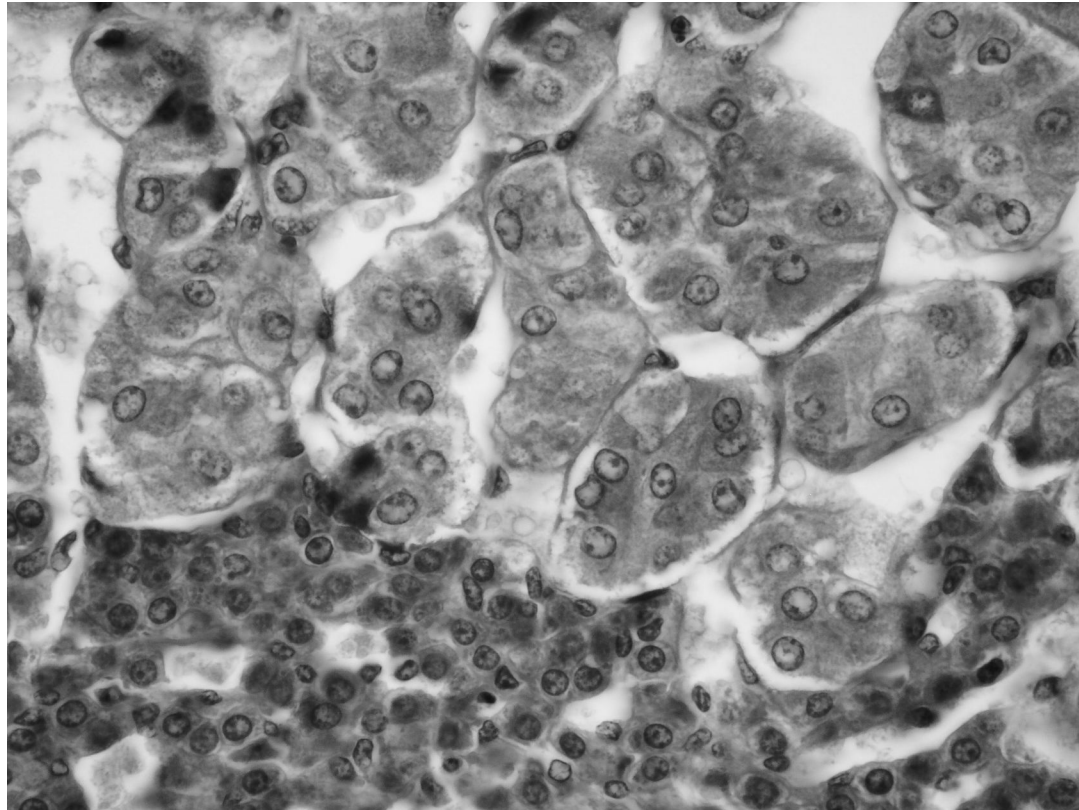




Adrenal gland-special stain

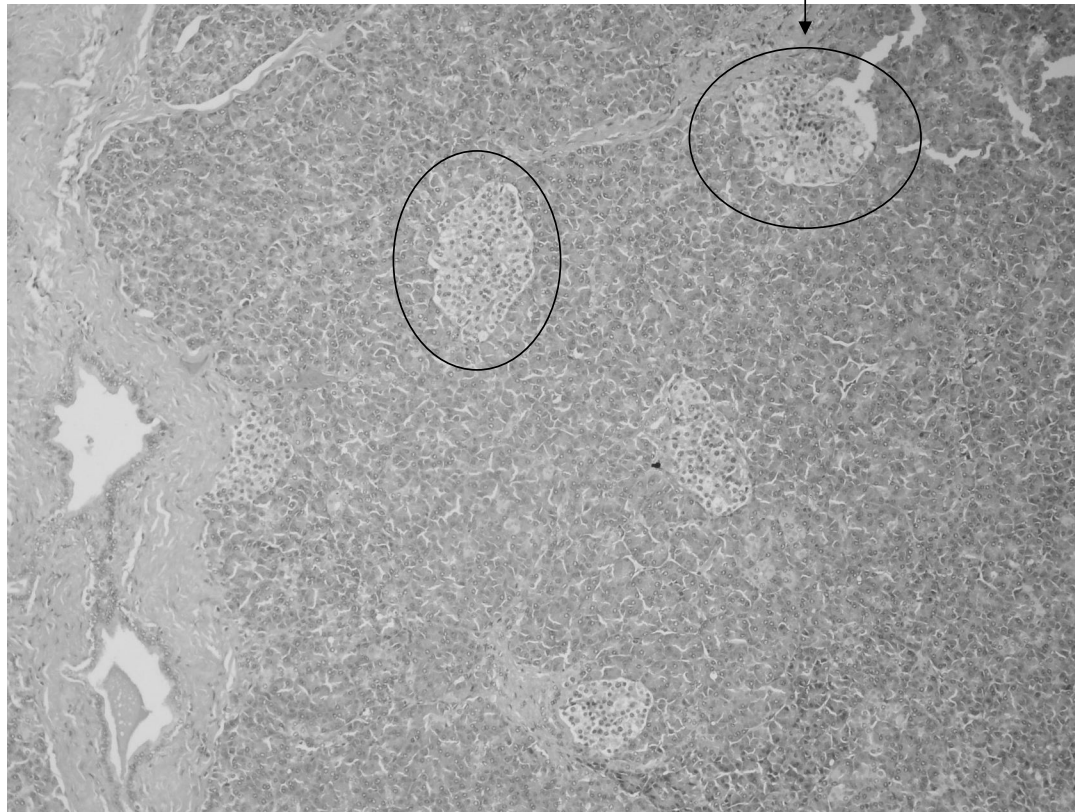


Chromaffin cells in adrenal medulla

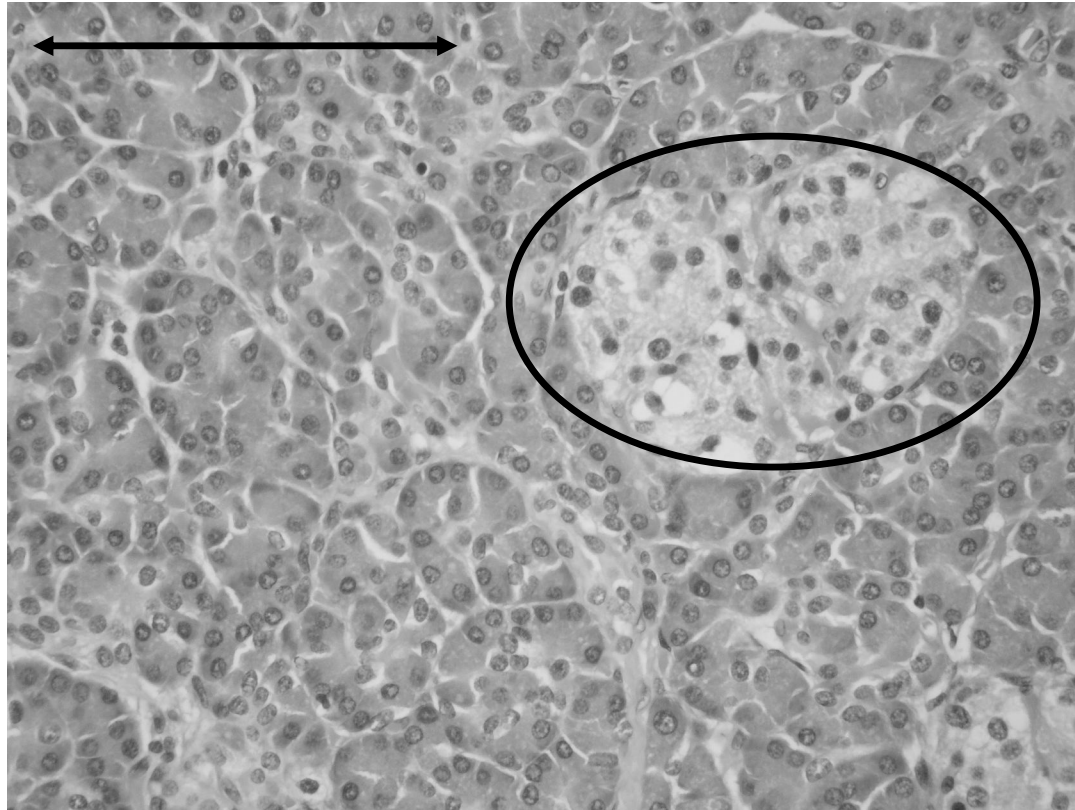


Pancreas
(Islet of Langerhans)

Pancreas (exocrine & endocrine)

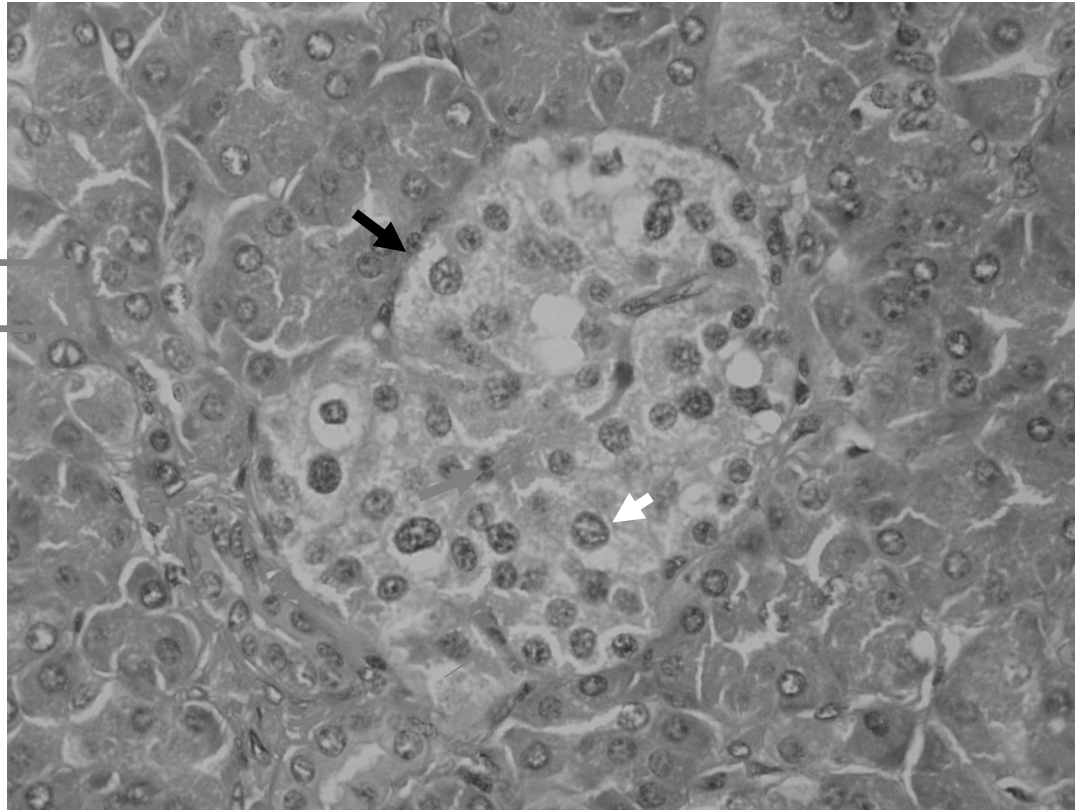


Exocrine part & endocrine (islet of Langerhans)

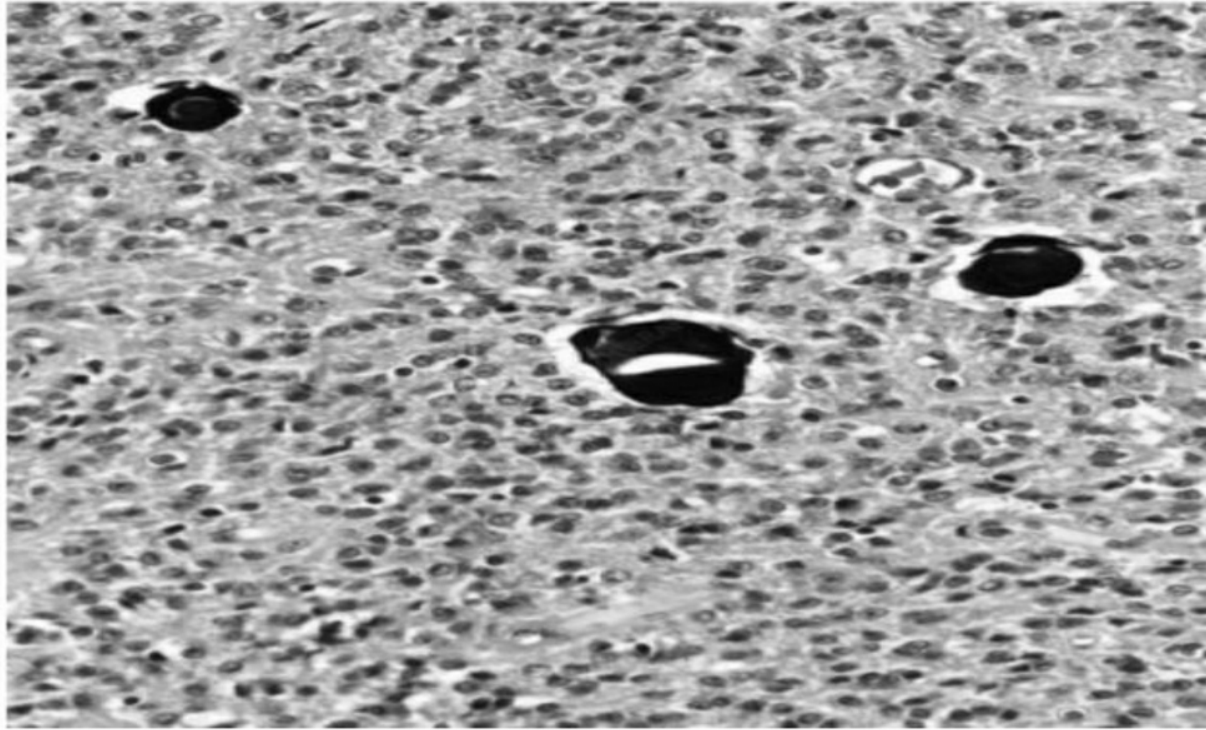


Types of endocrine cells

capillaries



****Pineal gland**



Pineal Gland H&E

