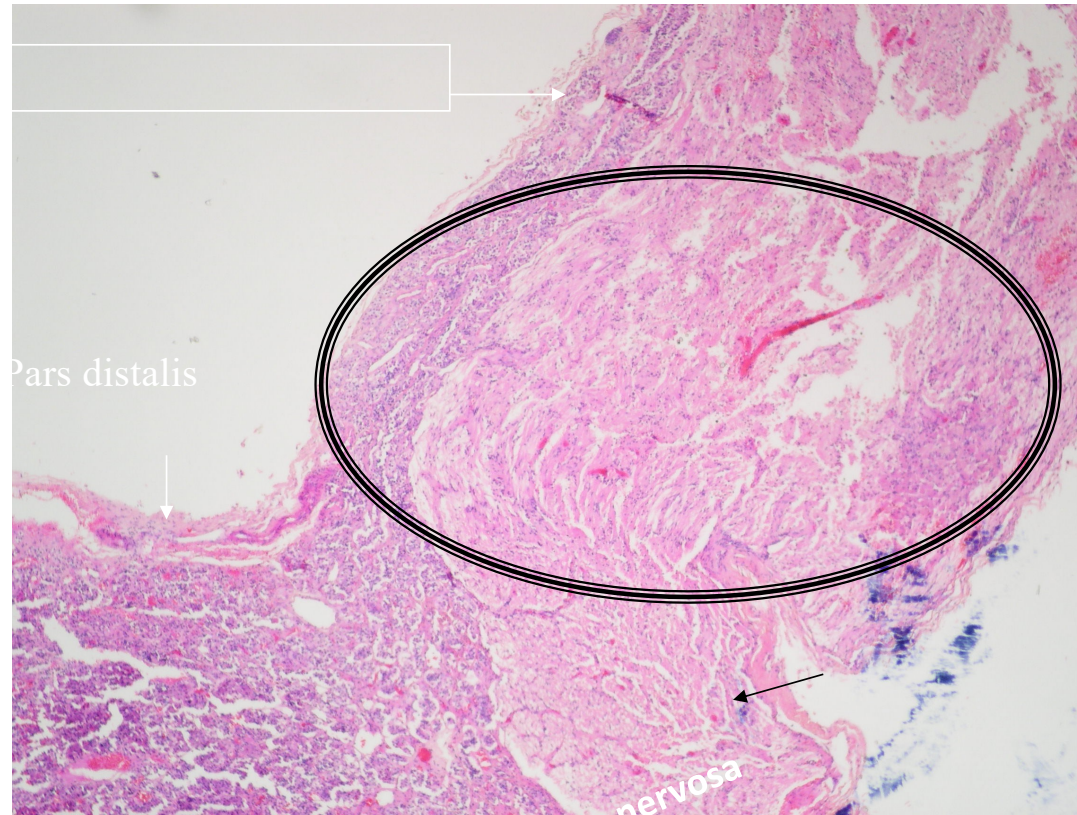


# Hypophyseal stalk

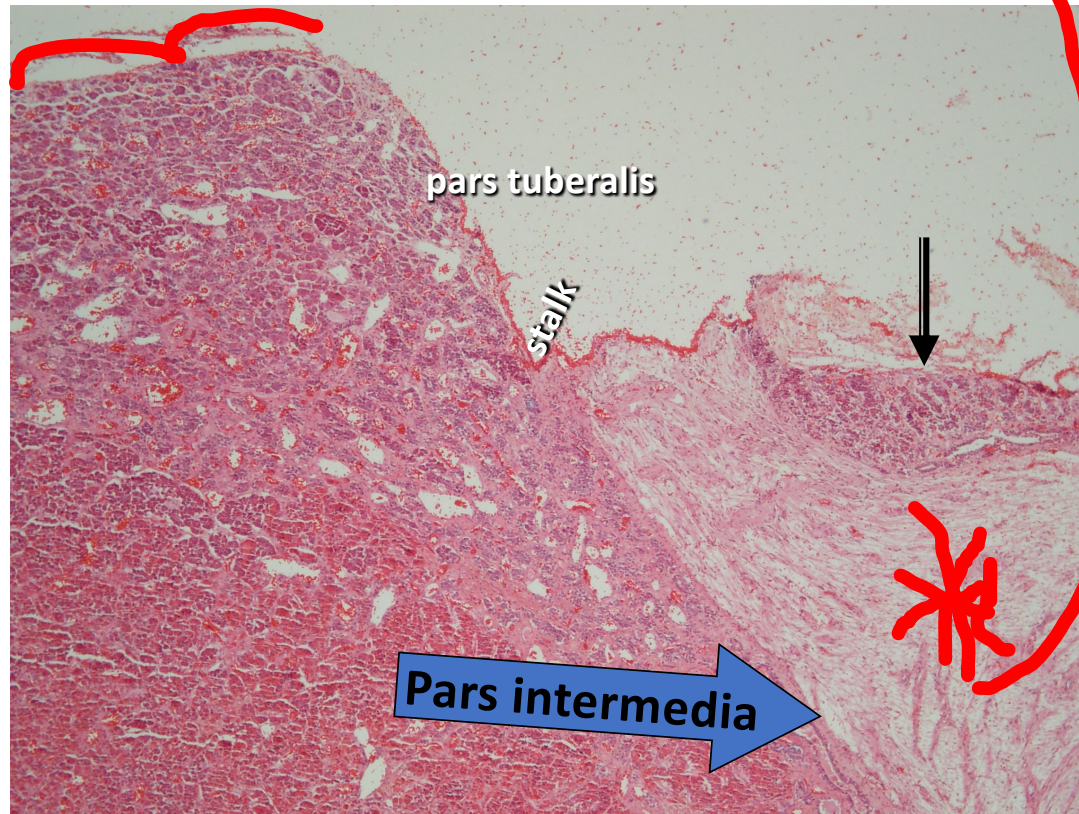
pars tuberalis



Pars distalis

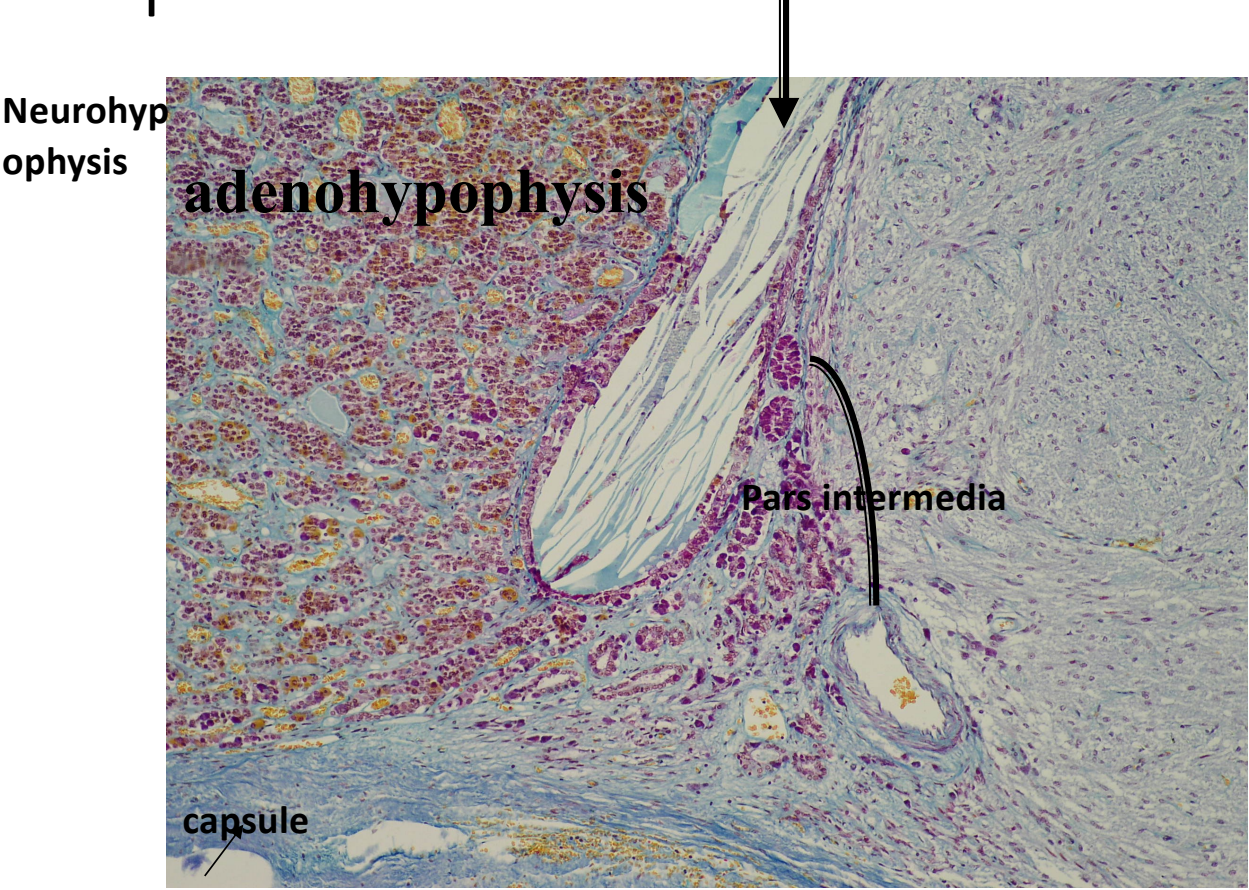
nervosa

# Pars distalis Pars nervosa





# Rathke's pouch

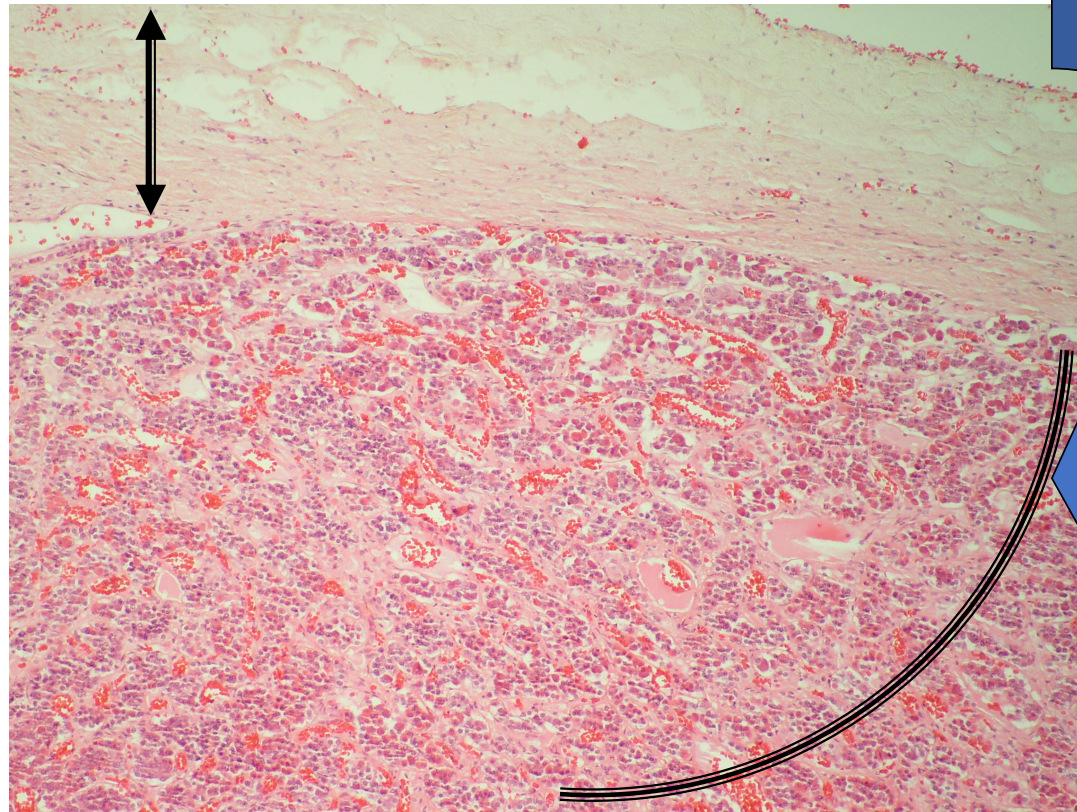


P.distalis P.intermedia P.nervosa  
(Pearse trichrome stain)

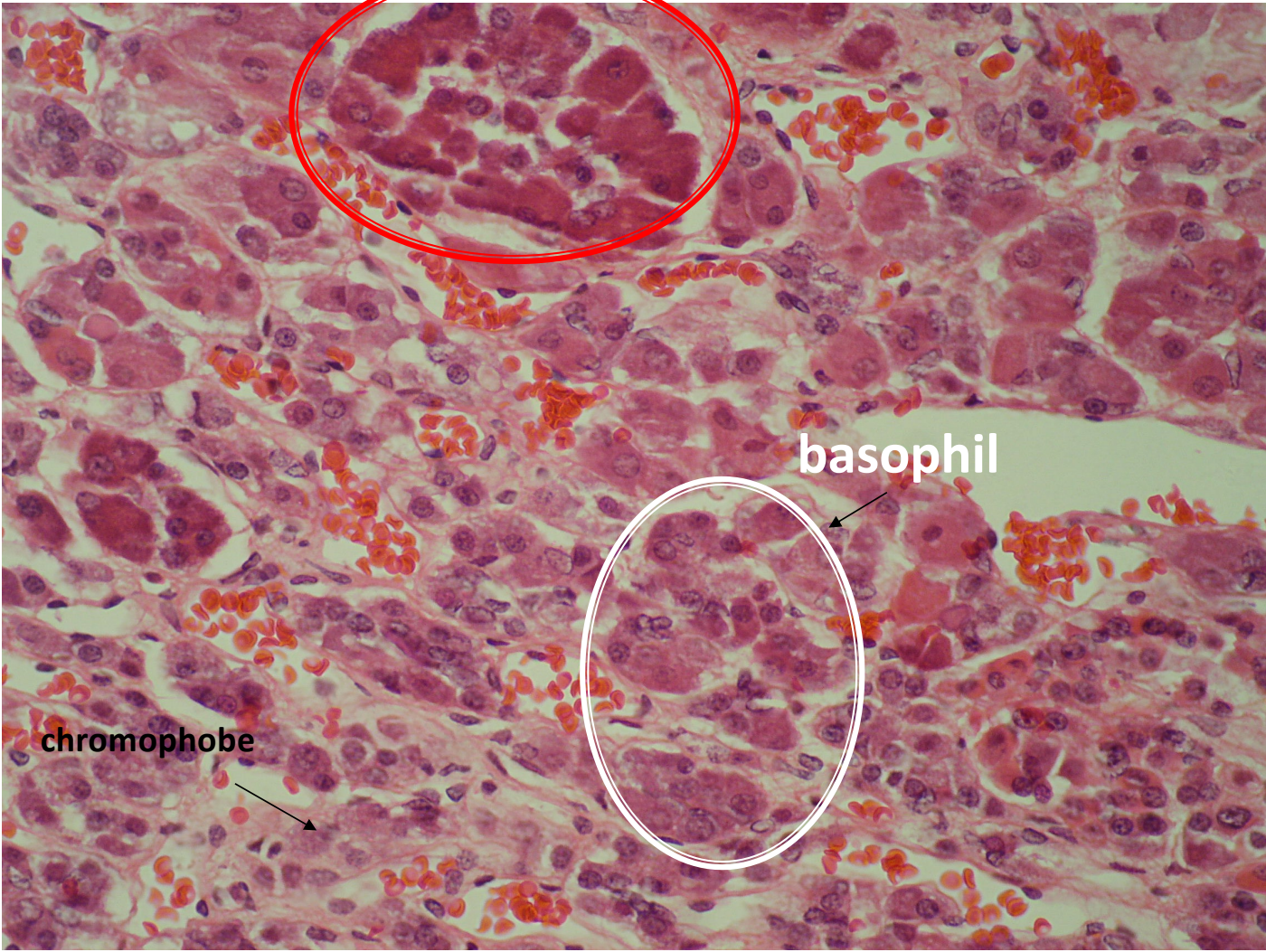




Capsule – adenohypophysis  
H&E stain



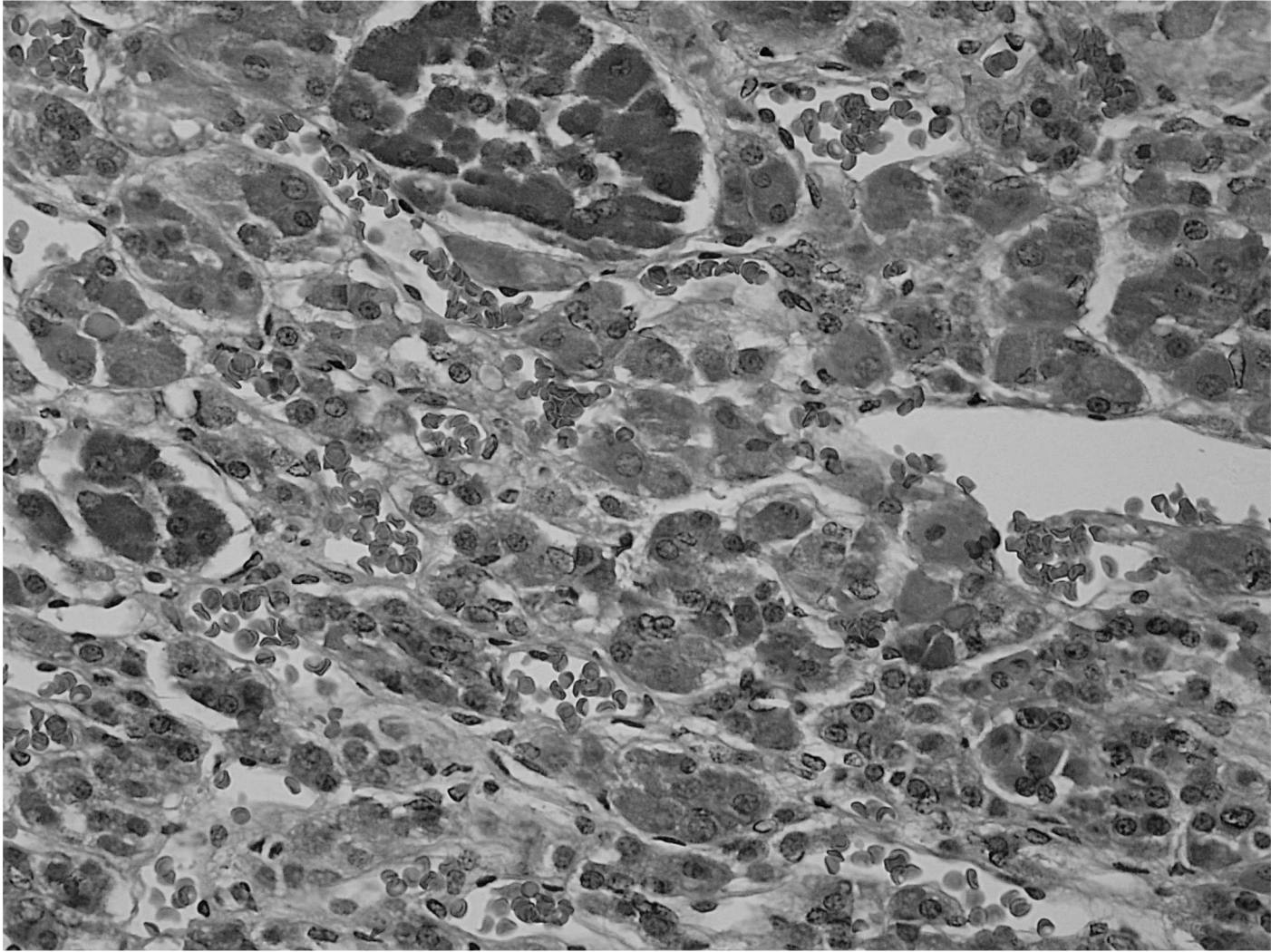
**acidophil**



**basophil**

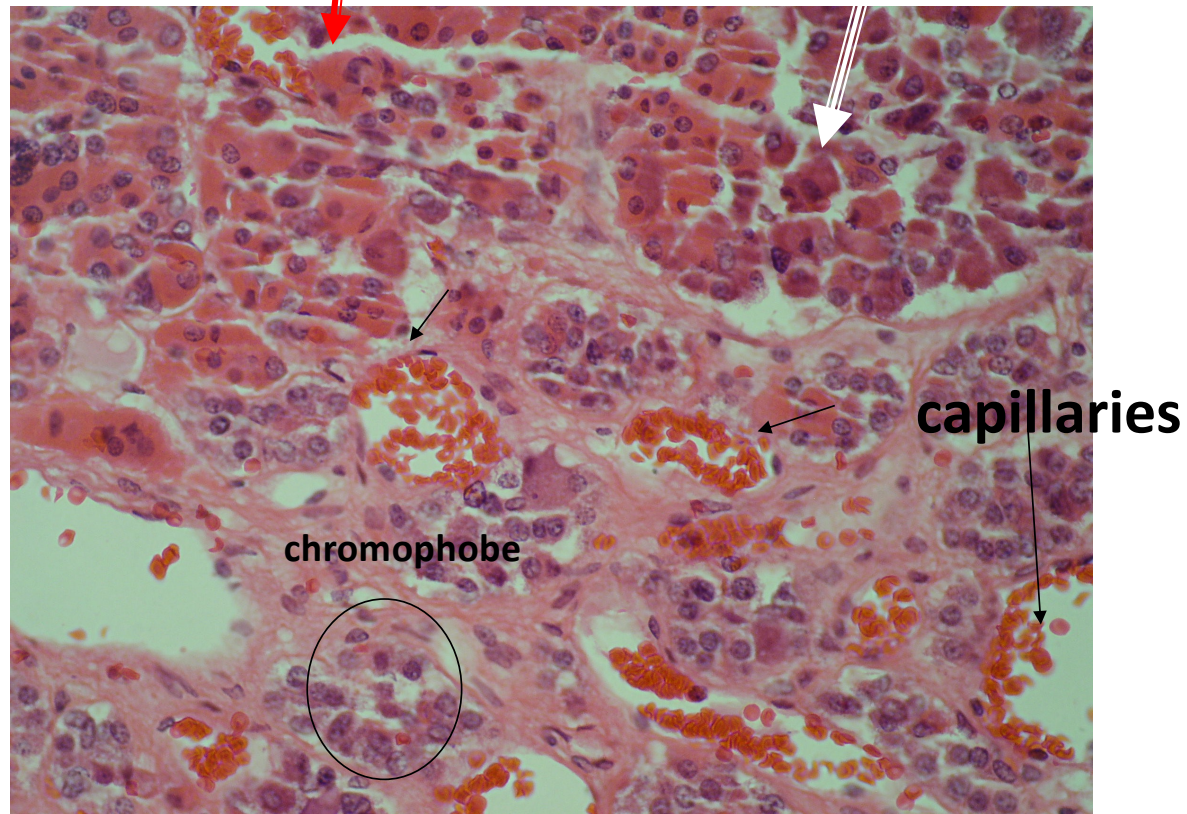
**chromophobe**





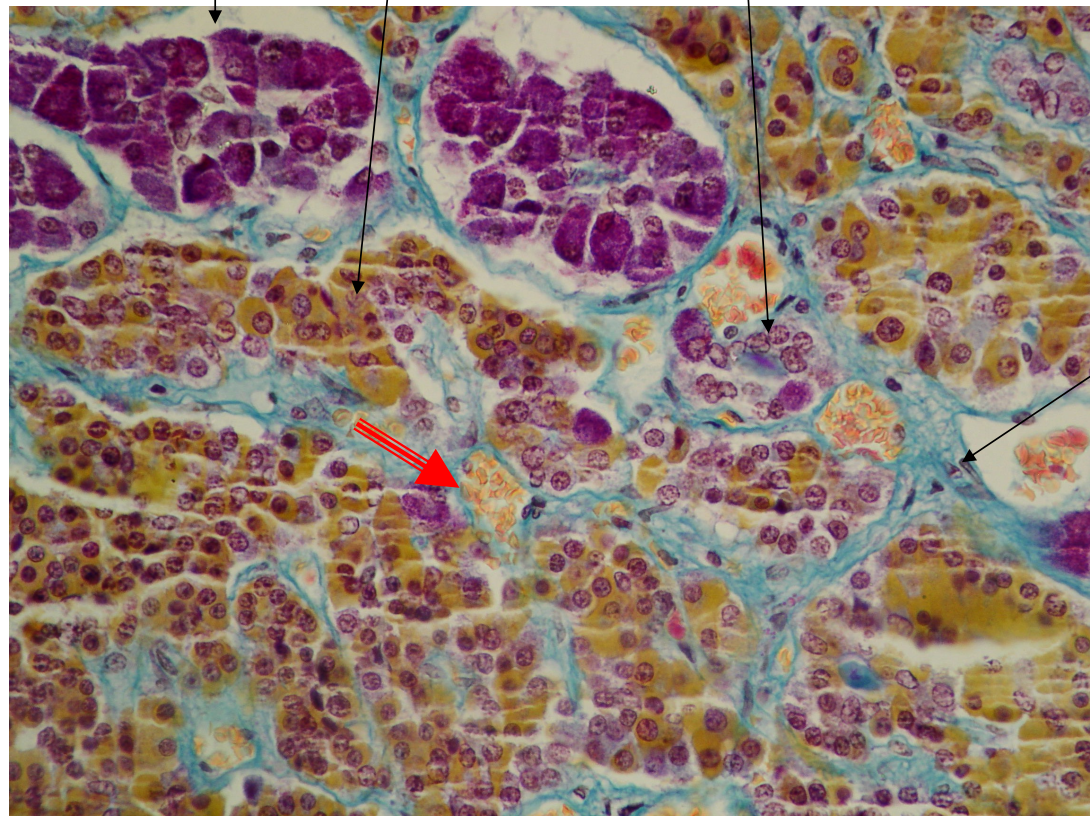
Acidophil

basophil



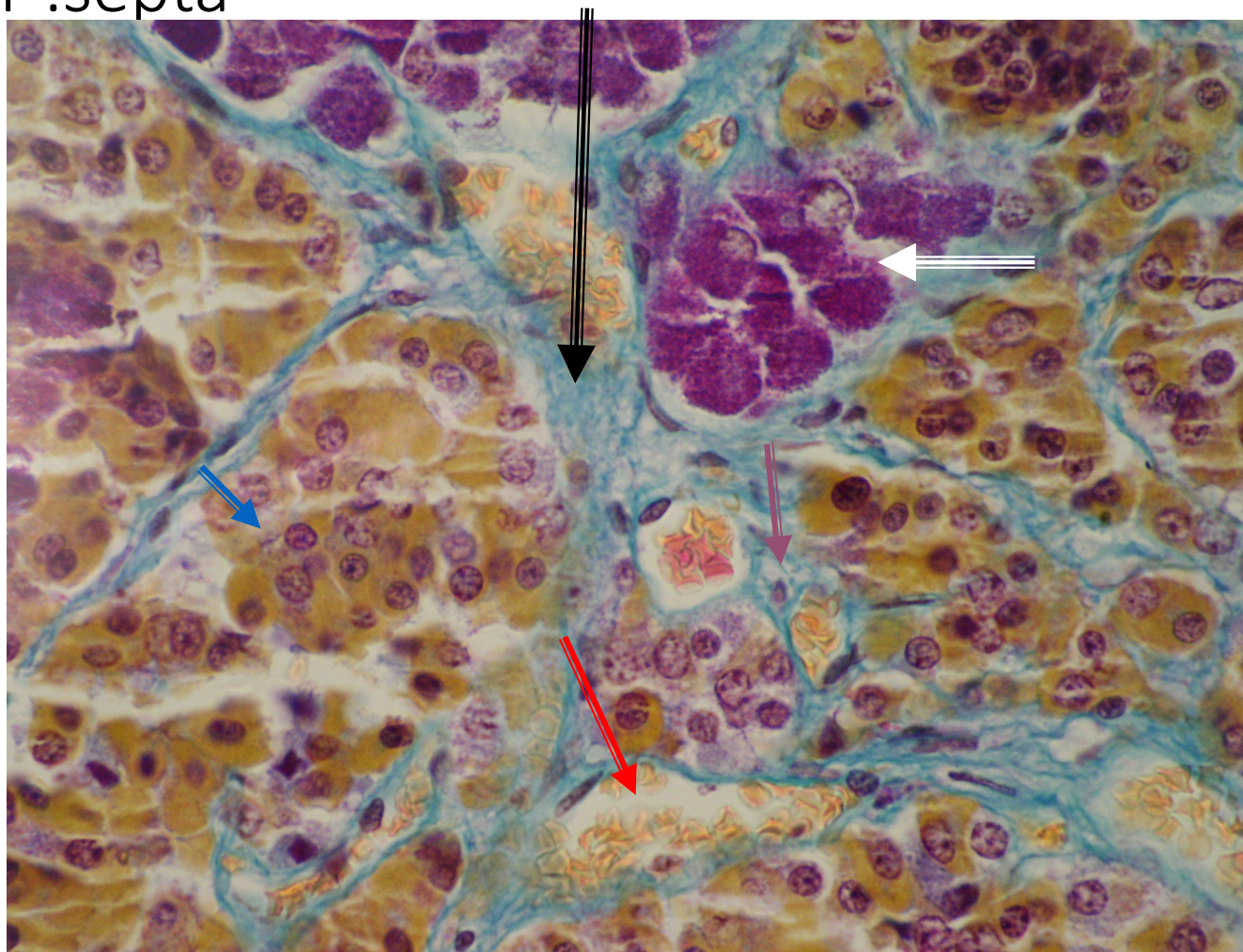


B. Ac. Ch.



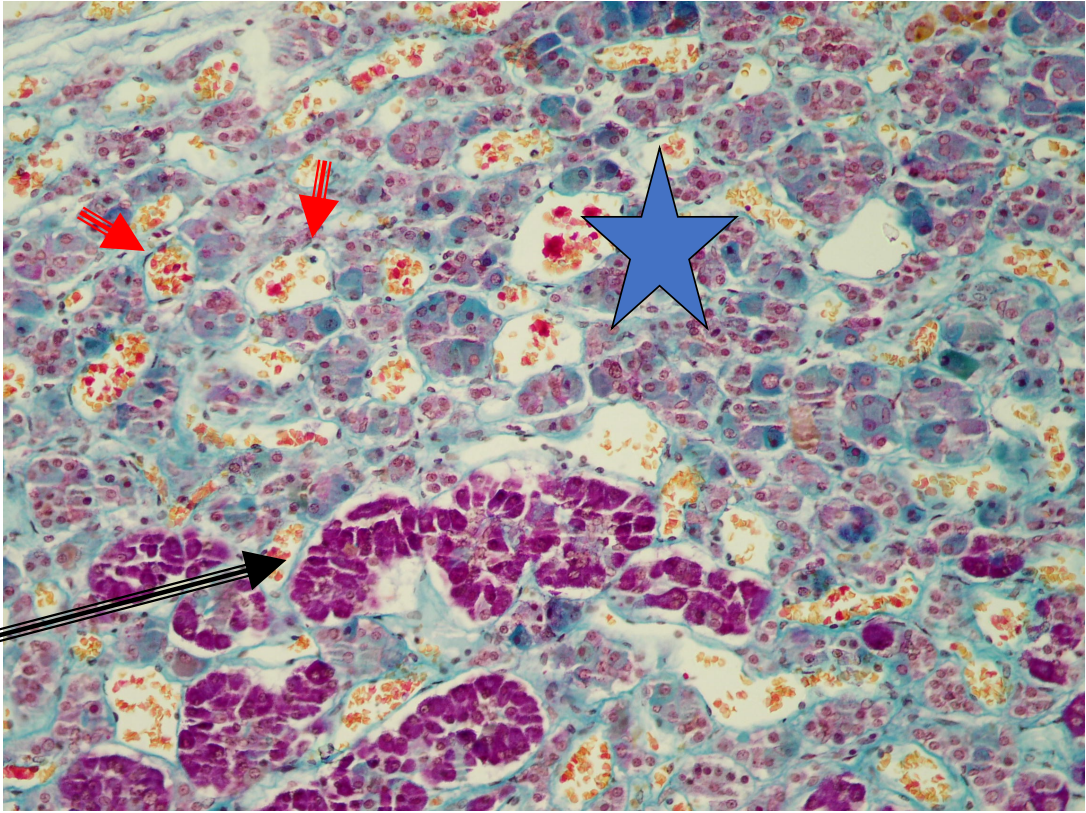
C.T.

C.T .septa





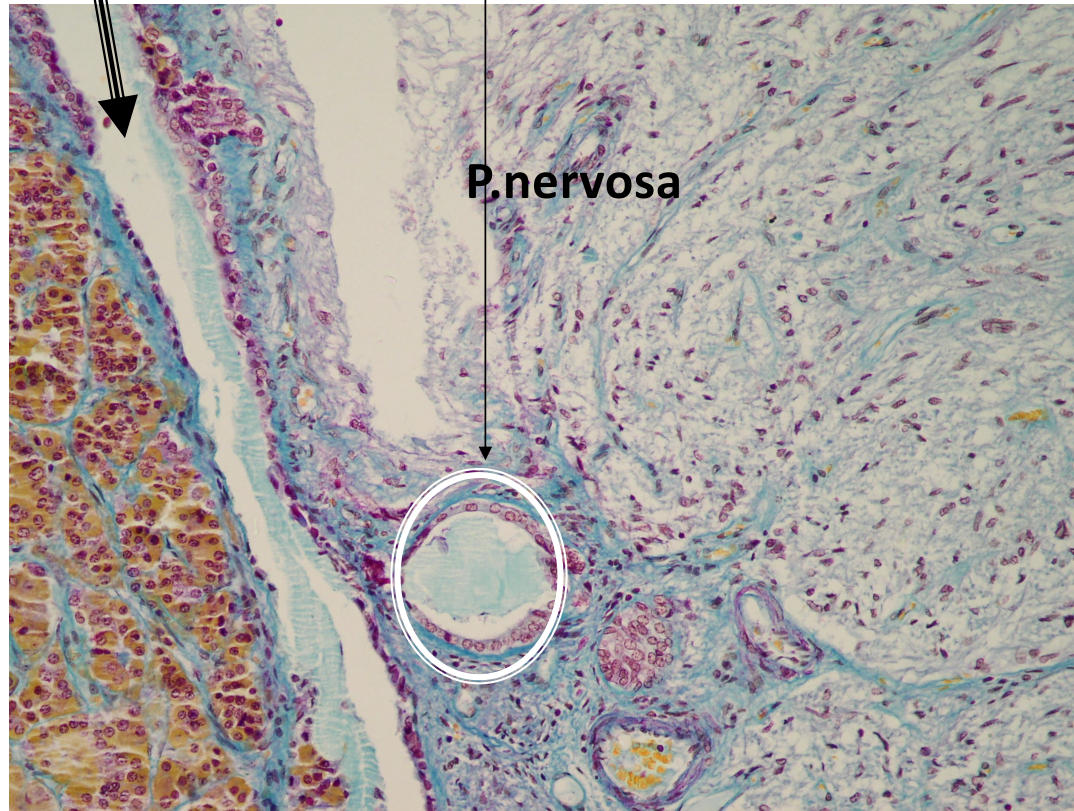
# Chromophobe★



basophil

Rathke's pouch

follicles of p.intermedia

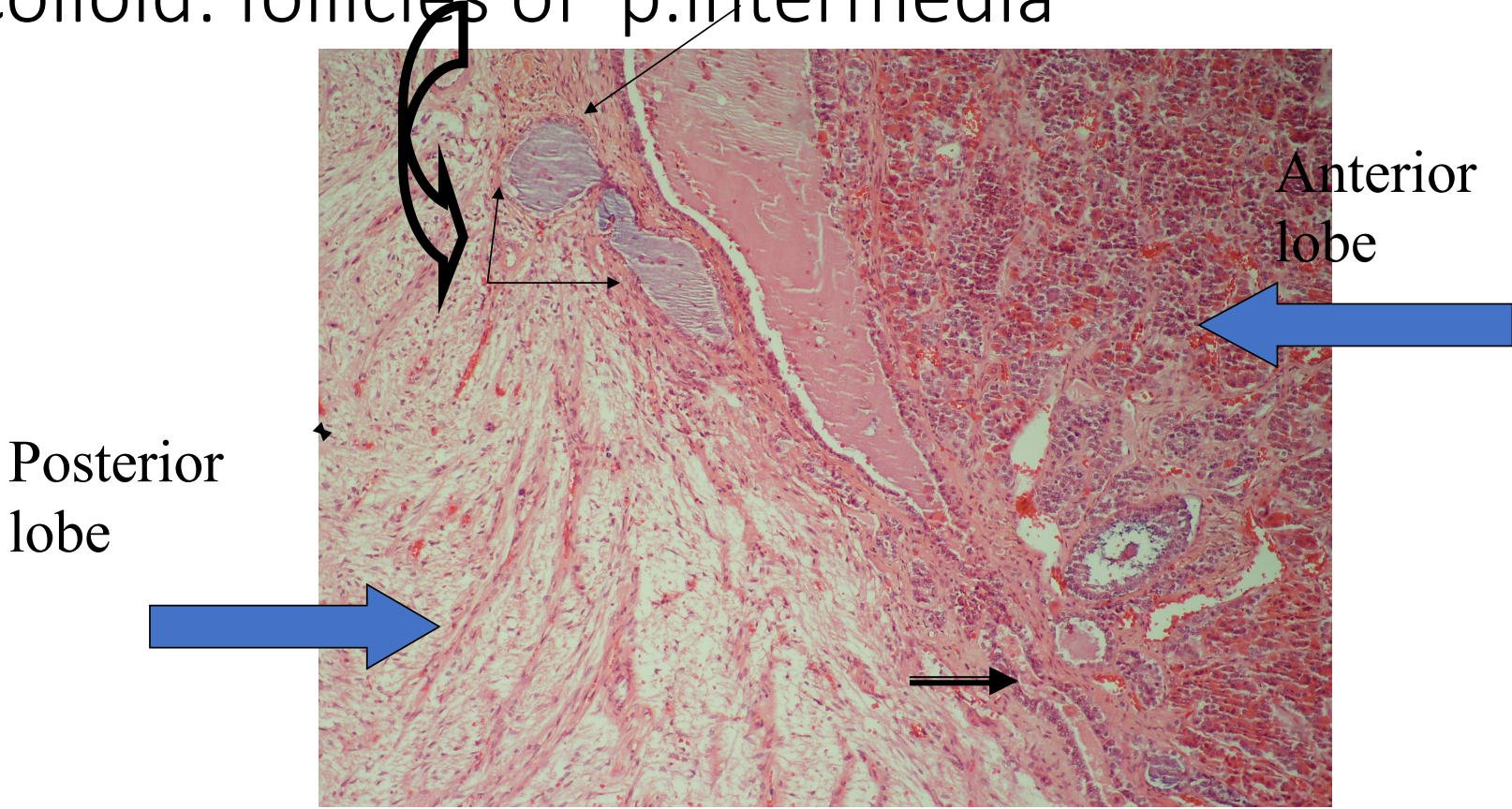


**P.distalis**

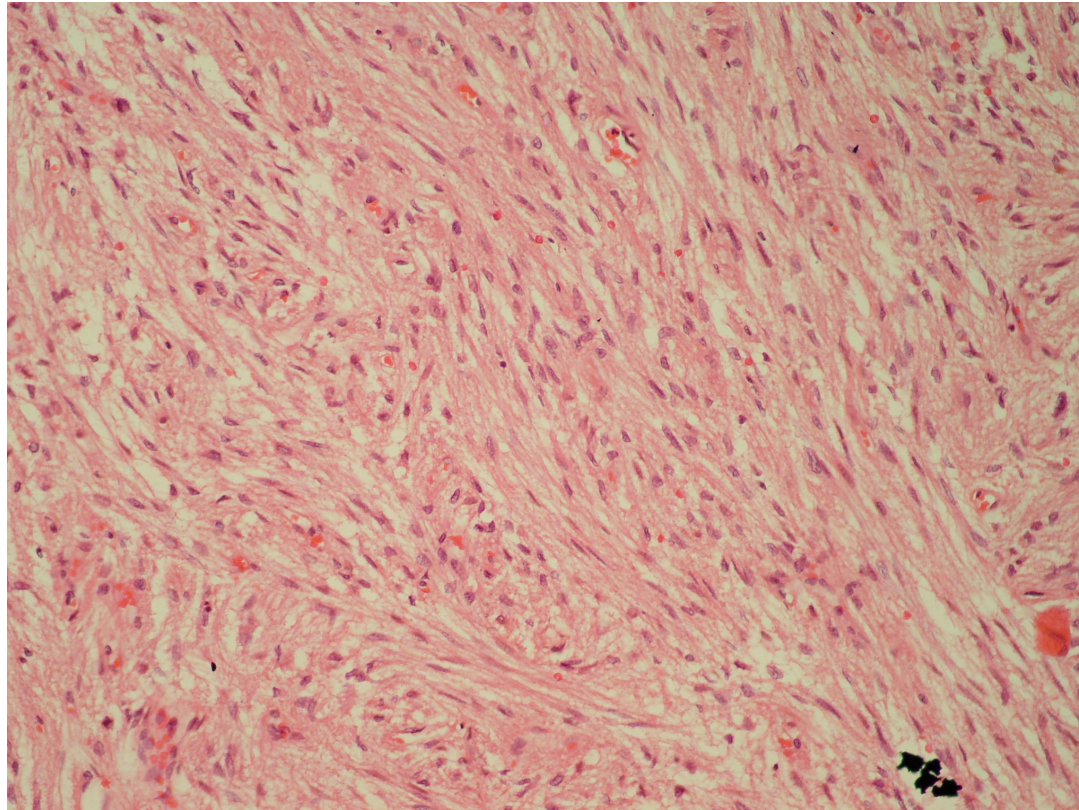
**P.nervosa**



H&E stain pitutary gl.  
Colloid: follicles of p.intermedia

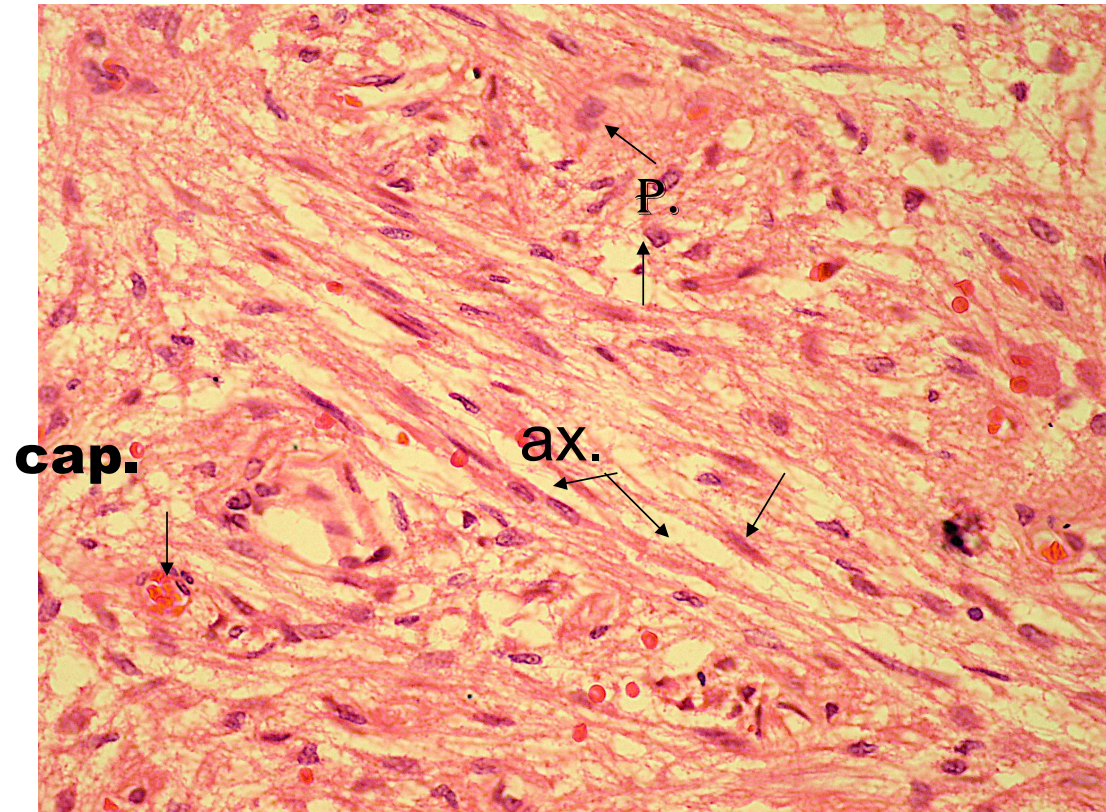


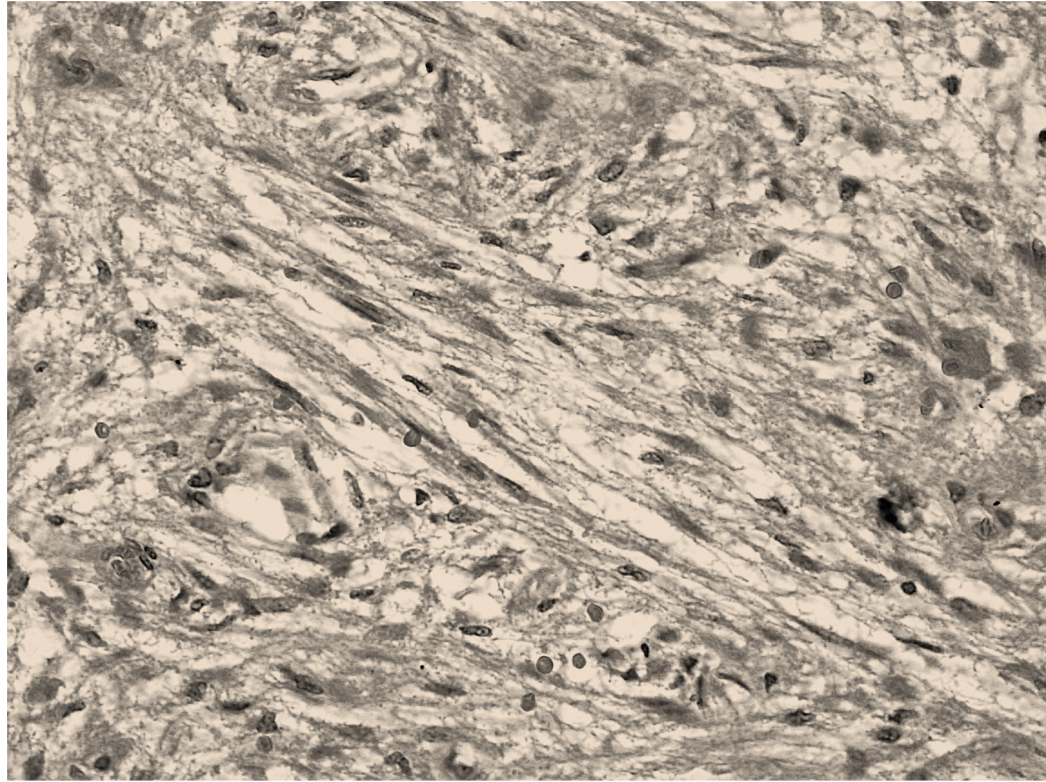
# Neurohypophysis (posterior lobe)



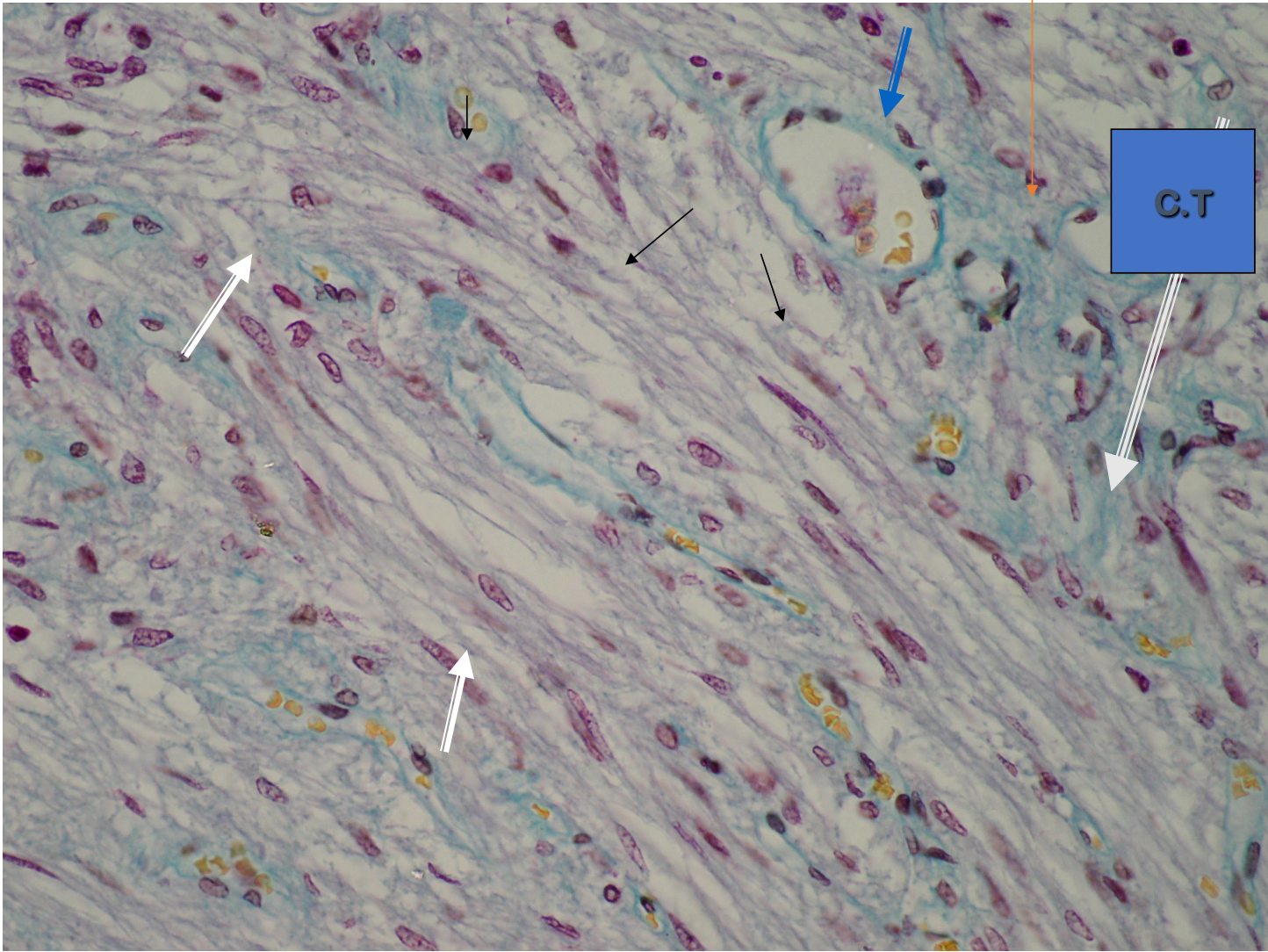


Axons of unmyelinated  
nerve fibers, pituicytes, Hering bodies





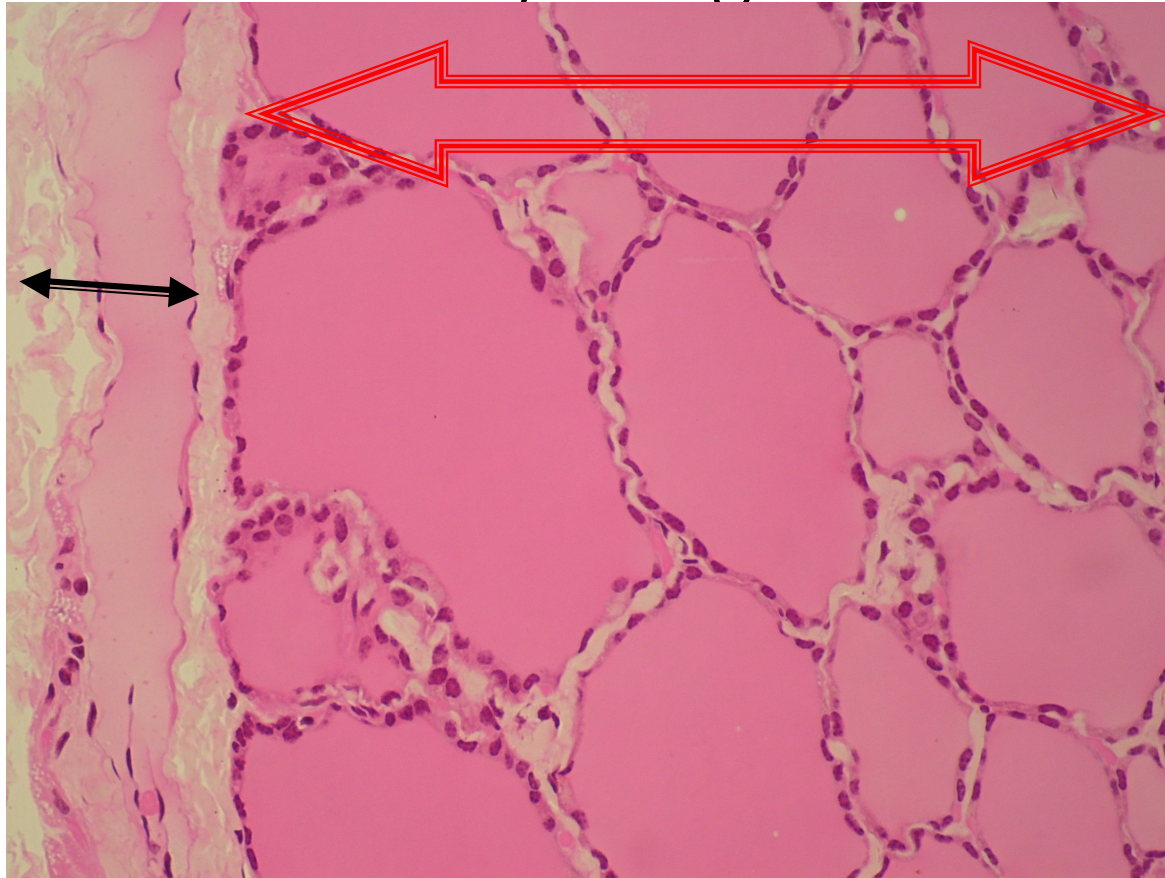




Thyroid gland



# Capsule - follicles of thyroid gland



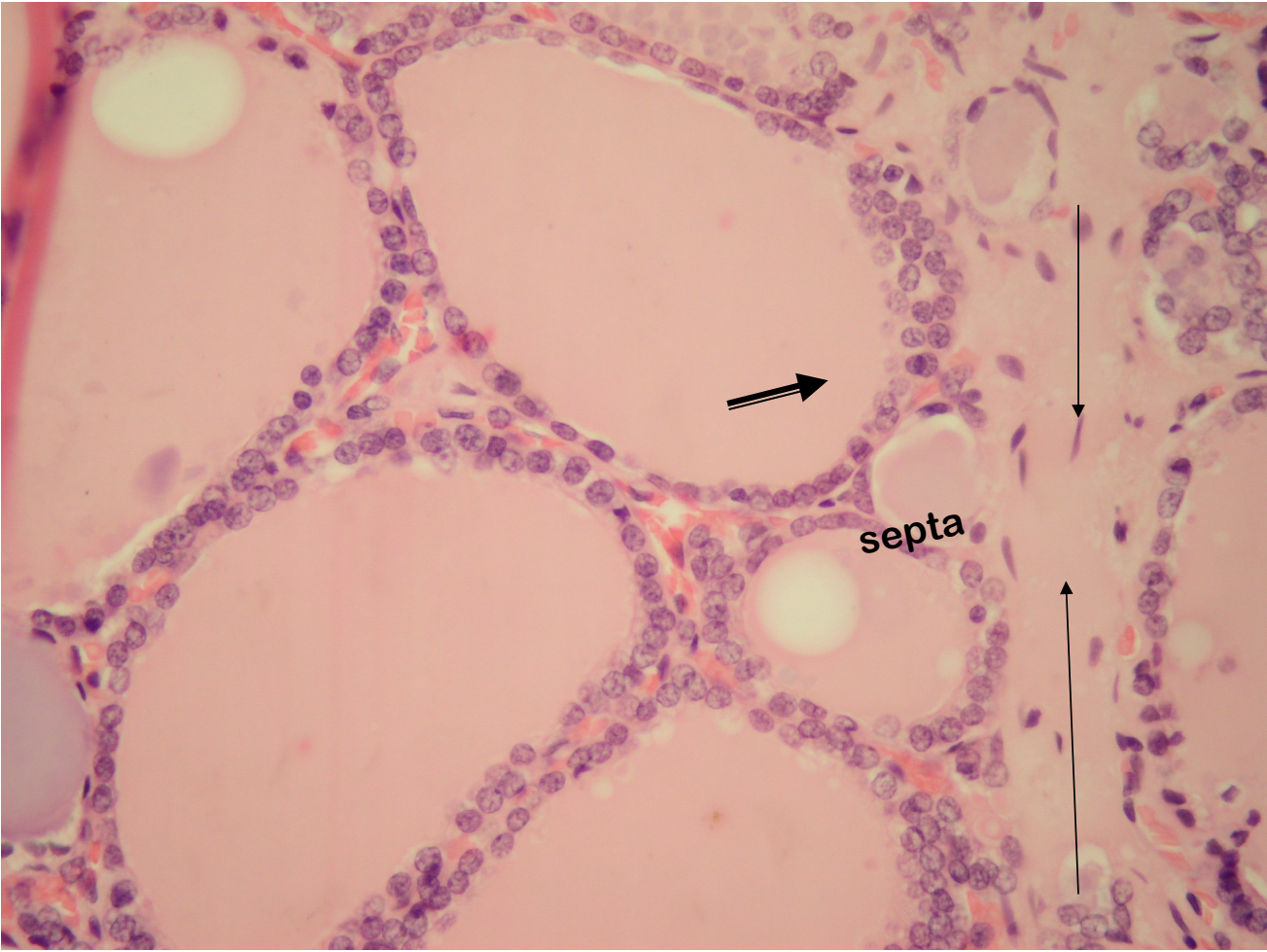
# Resting(hypoactive)thyroid gl.



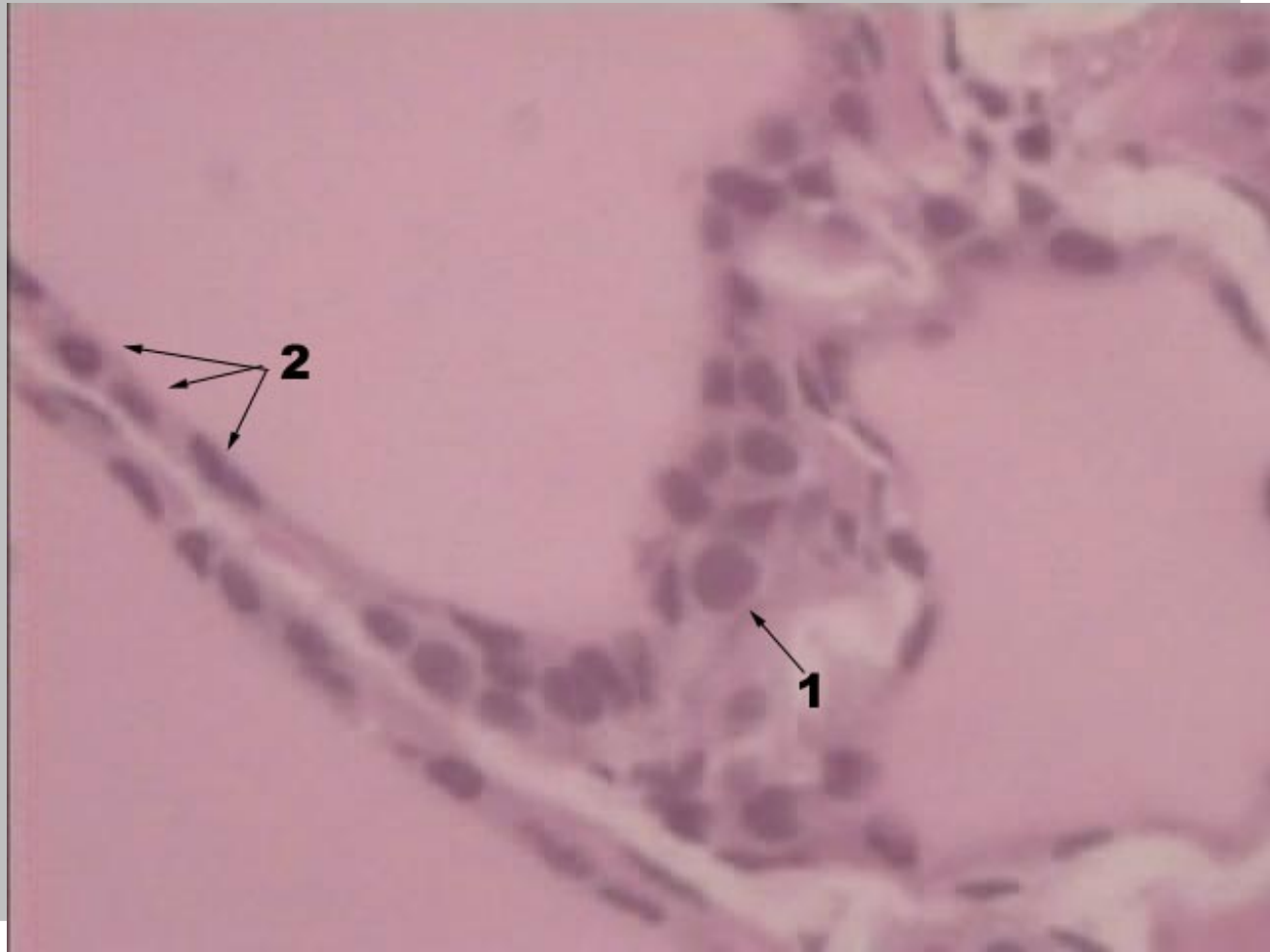


Simple squamous ep. C- cell

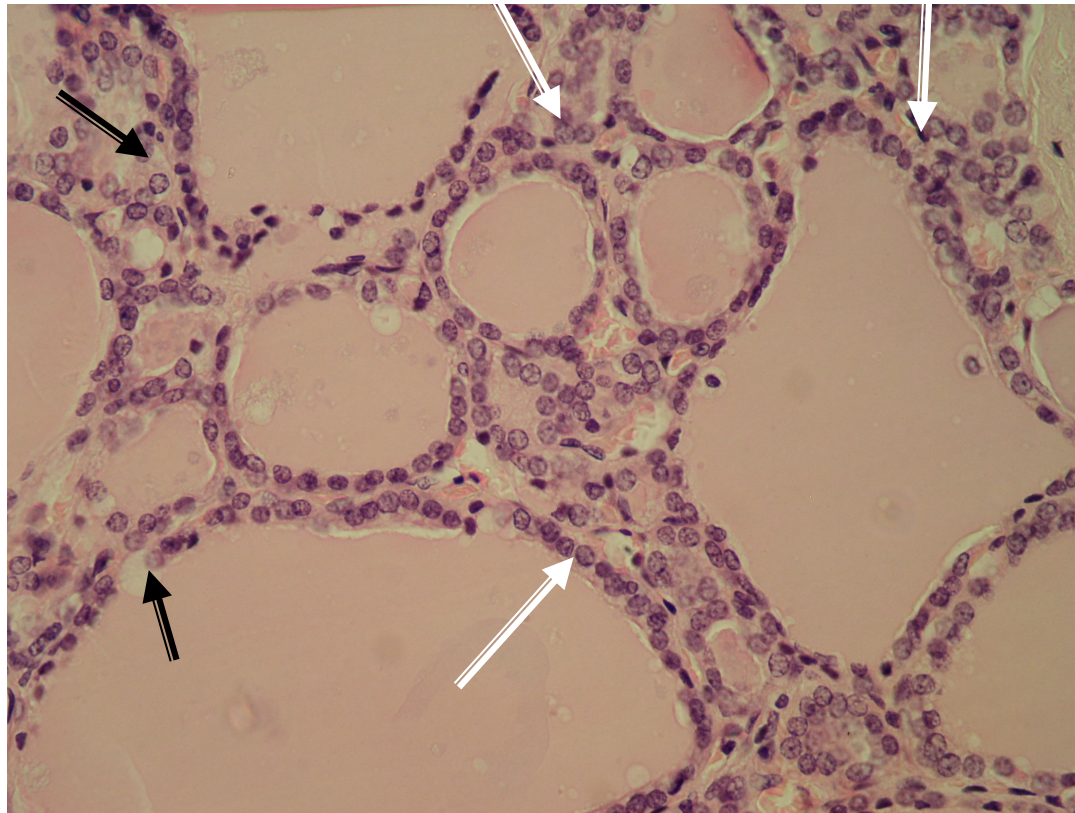




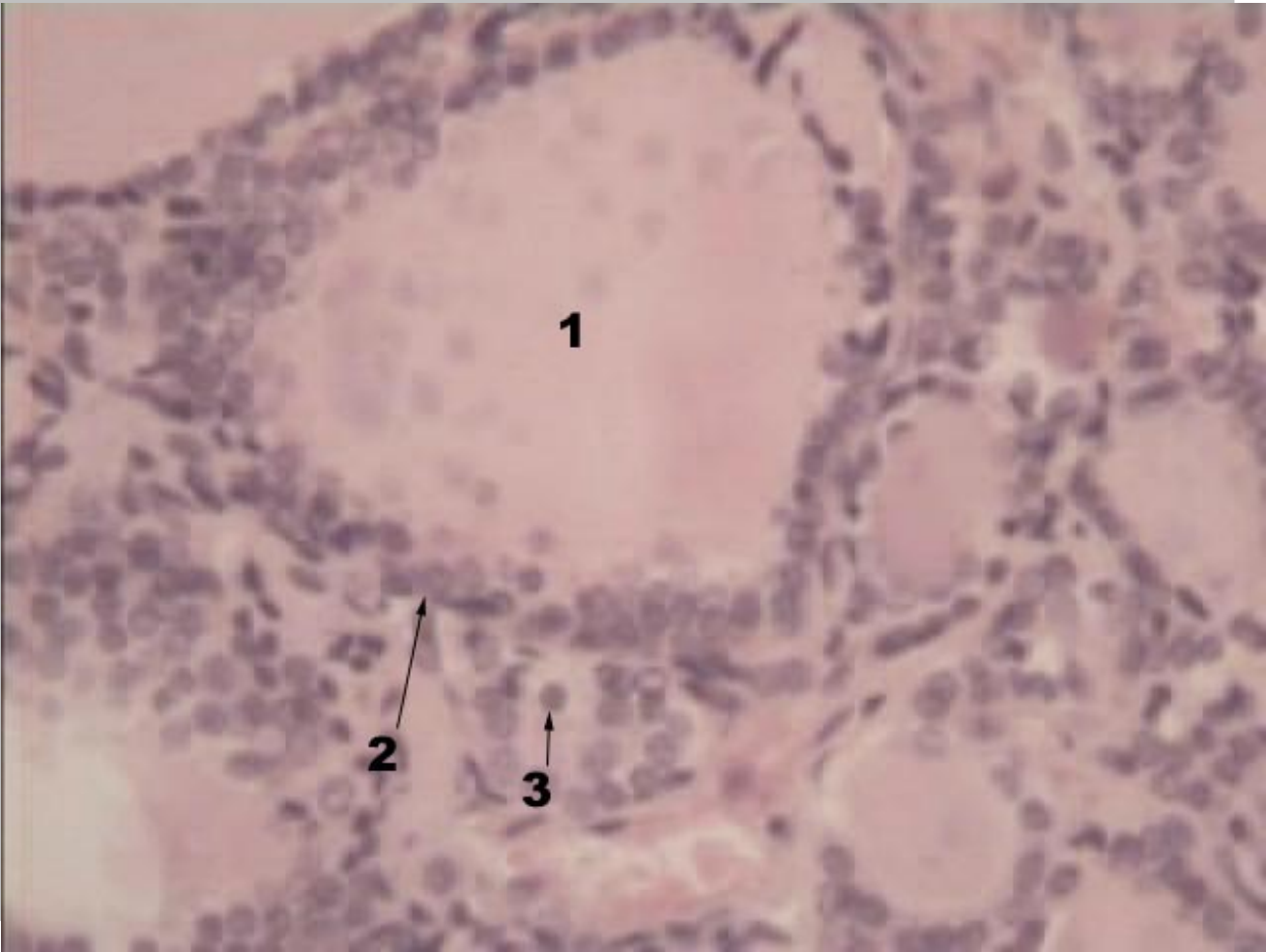




Active thyroid –simple cuboidal ep.  
interfollicular cells





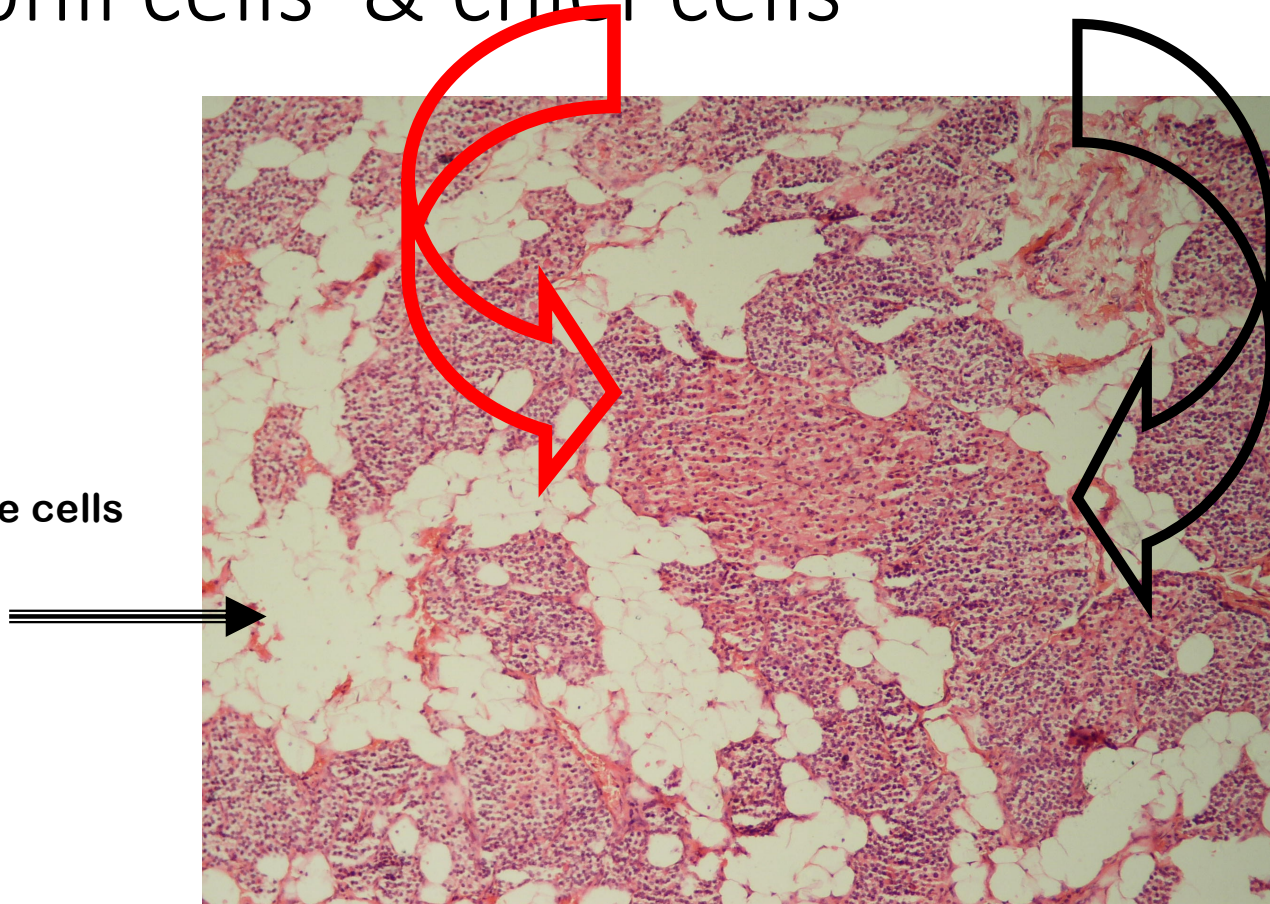


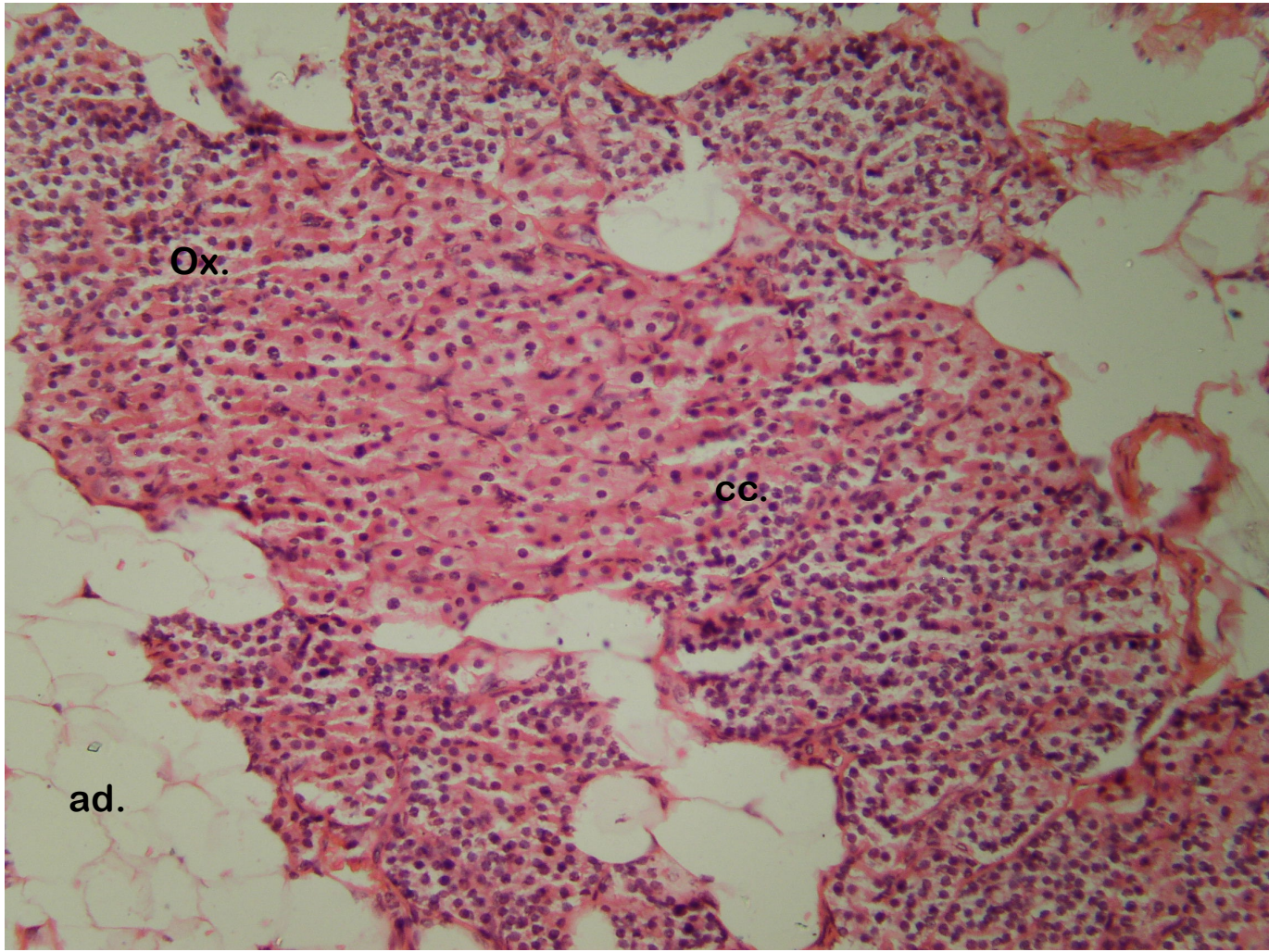
Parathyroid gland



# Oxyphil cells & chief cells

Adipose cells

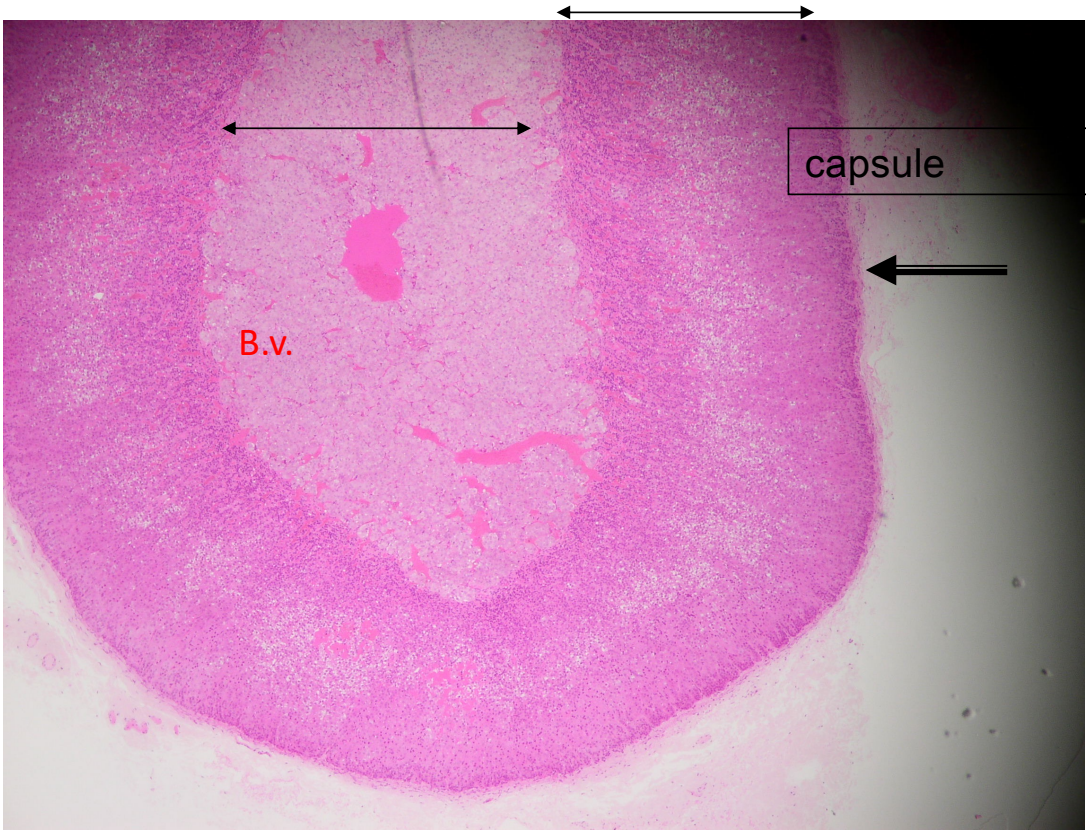






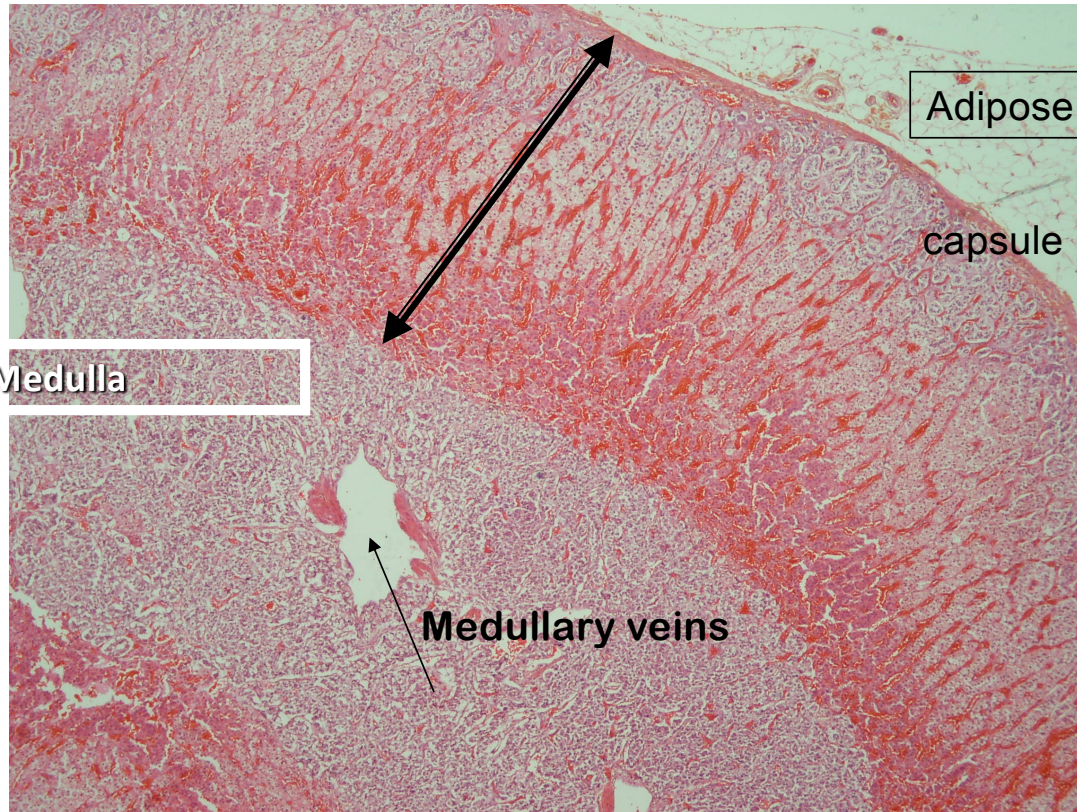
Adrenal gland

Medulla cortex





cortex



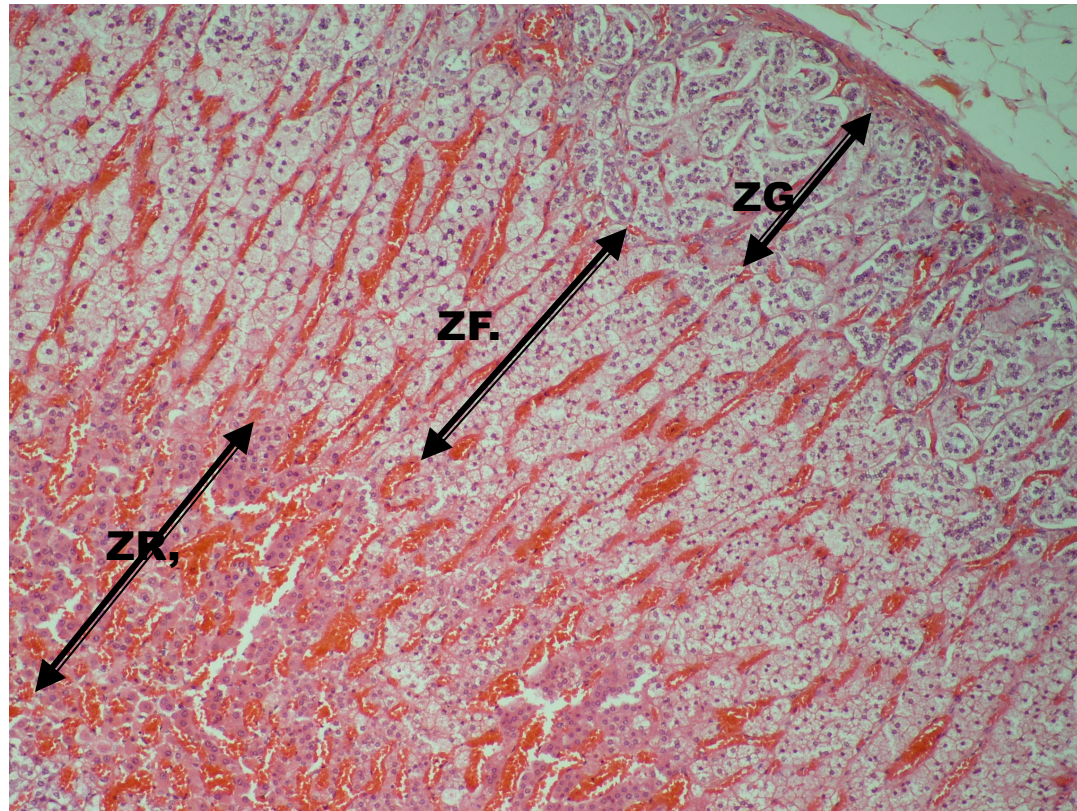
Adipose

capsule

Medulla

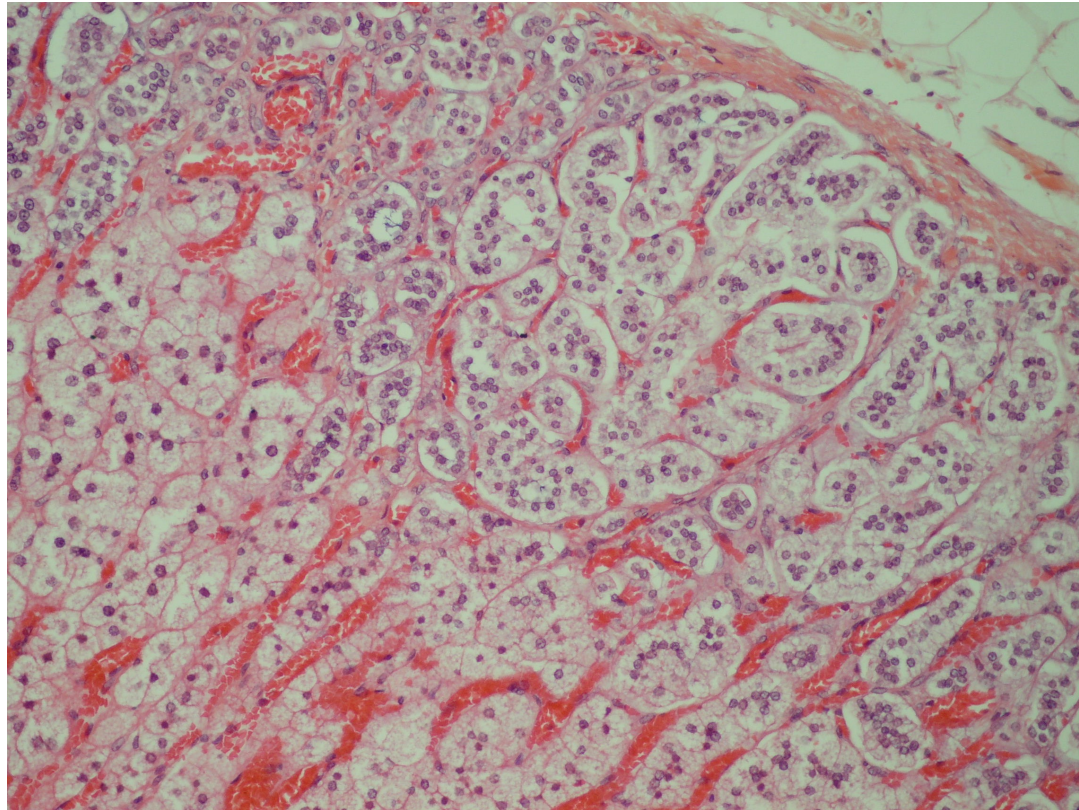
Medullary veins

# Zona Glomeulosa, Fasciculata&Reticularis

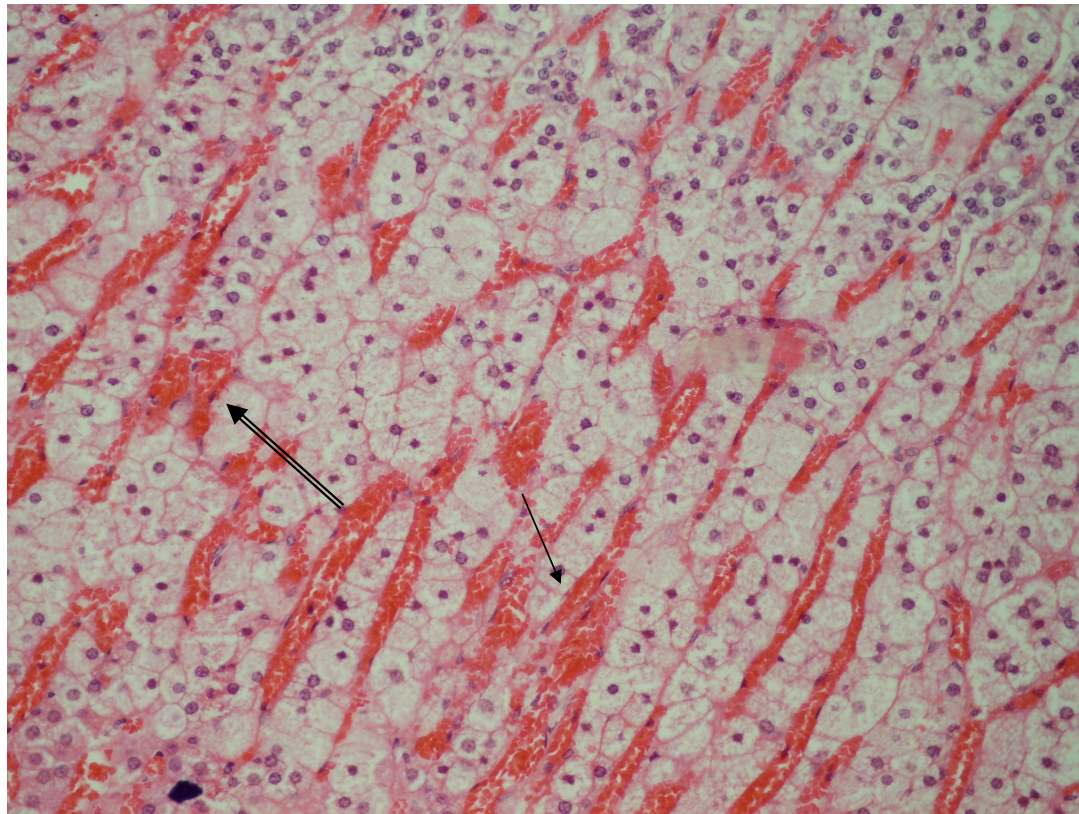




# Zona Glomeulosa

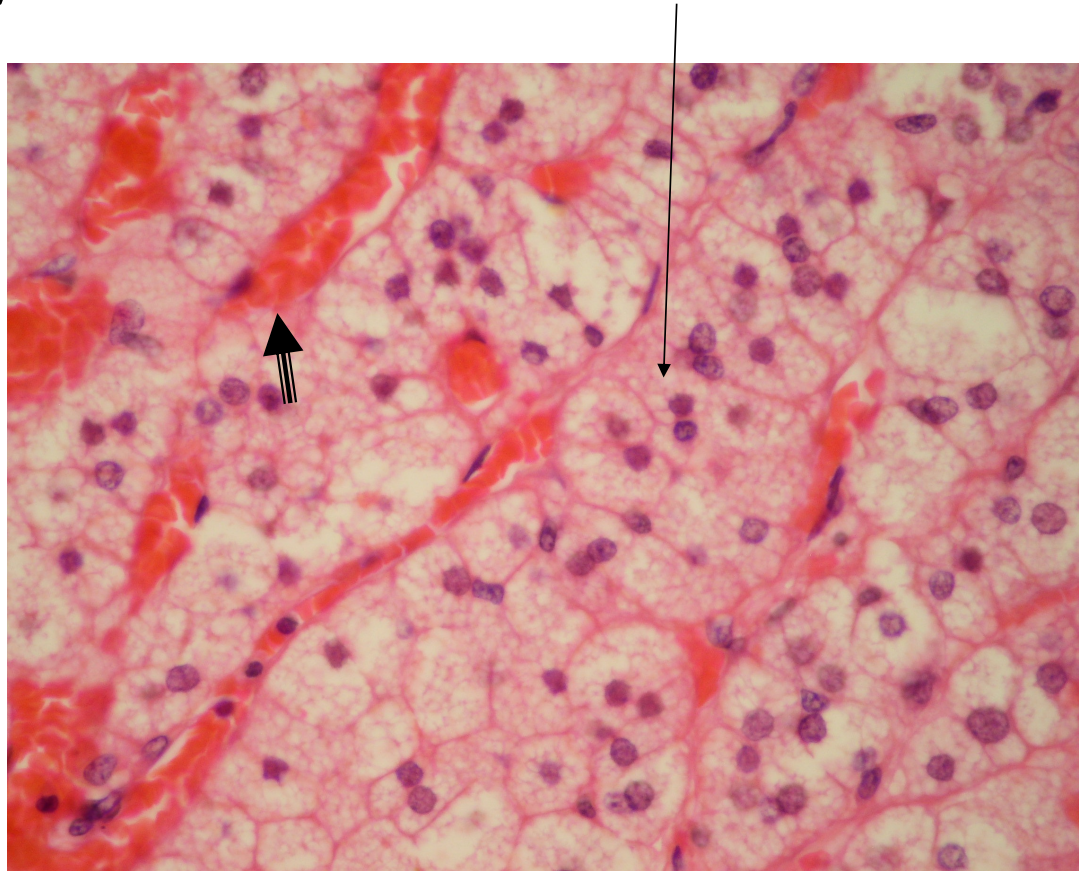


# Zona Fasciculata-capillaries

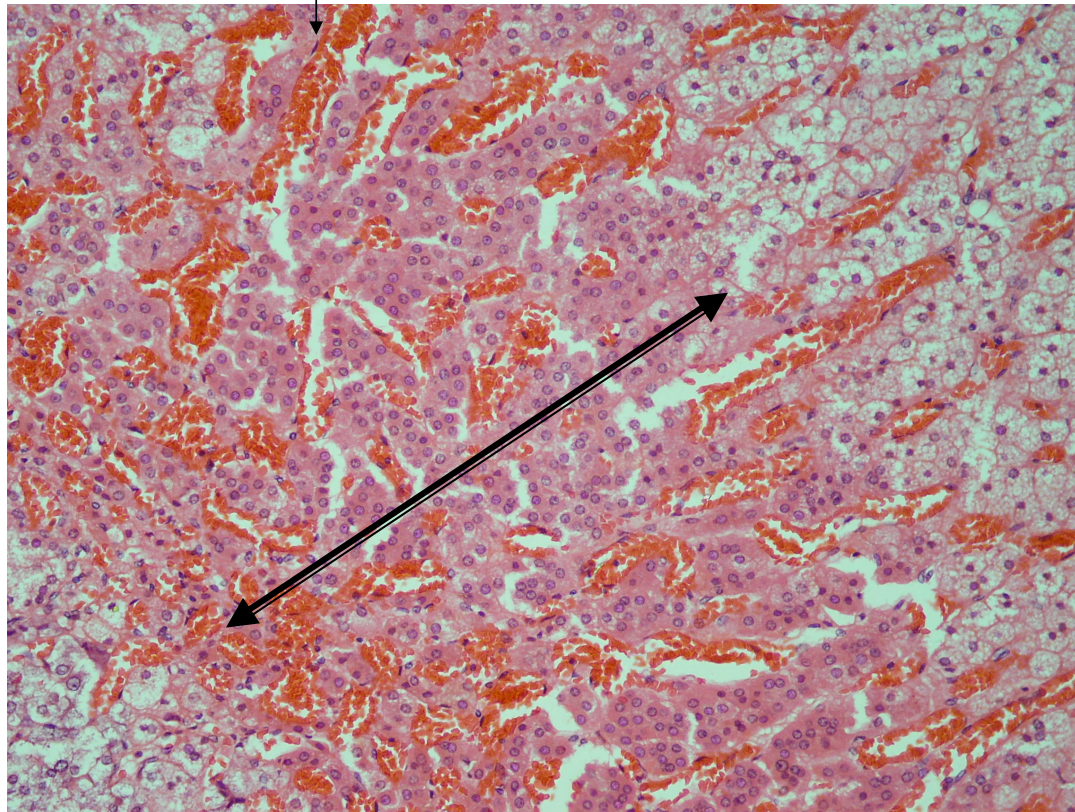




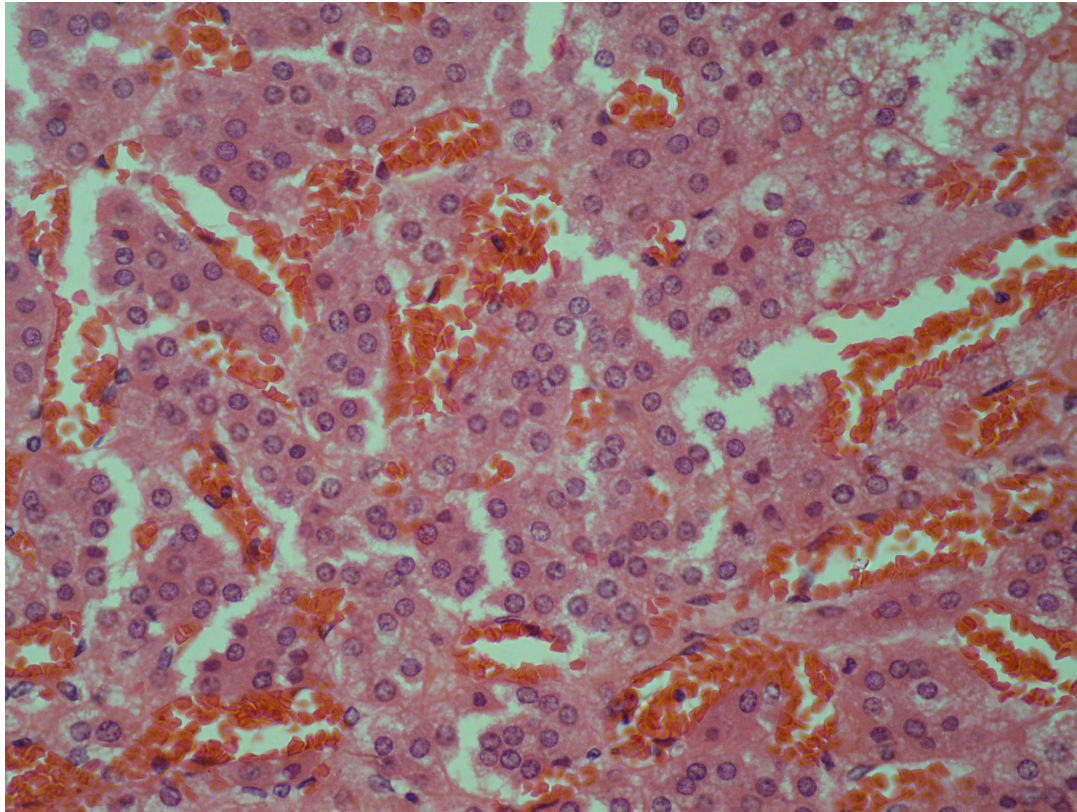
spongiocytes



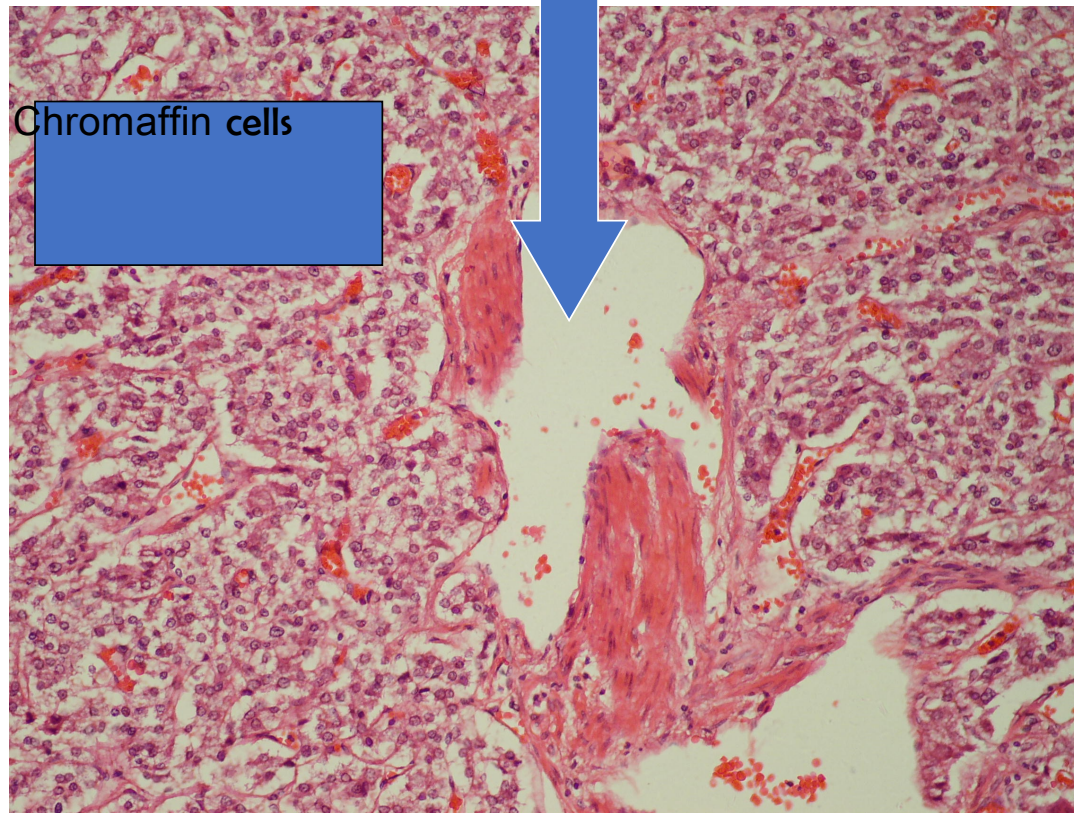
# Zona Reticularis -capillaries





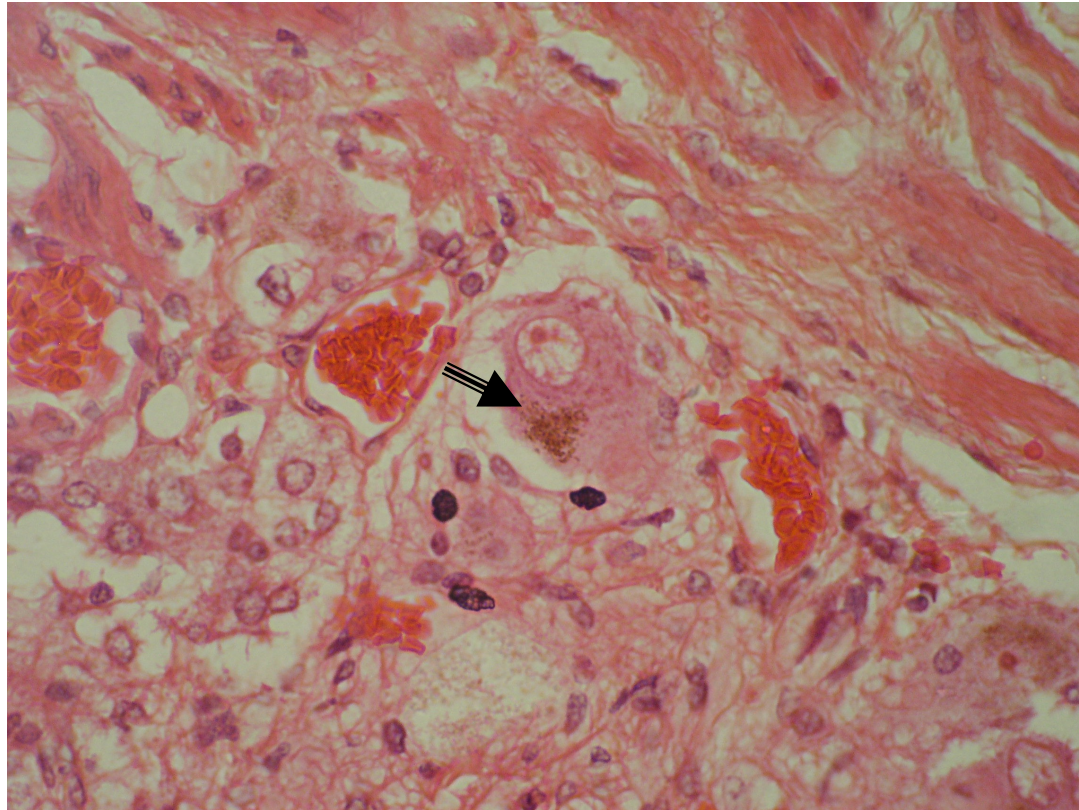


# Medullary veins in adrenal medulla

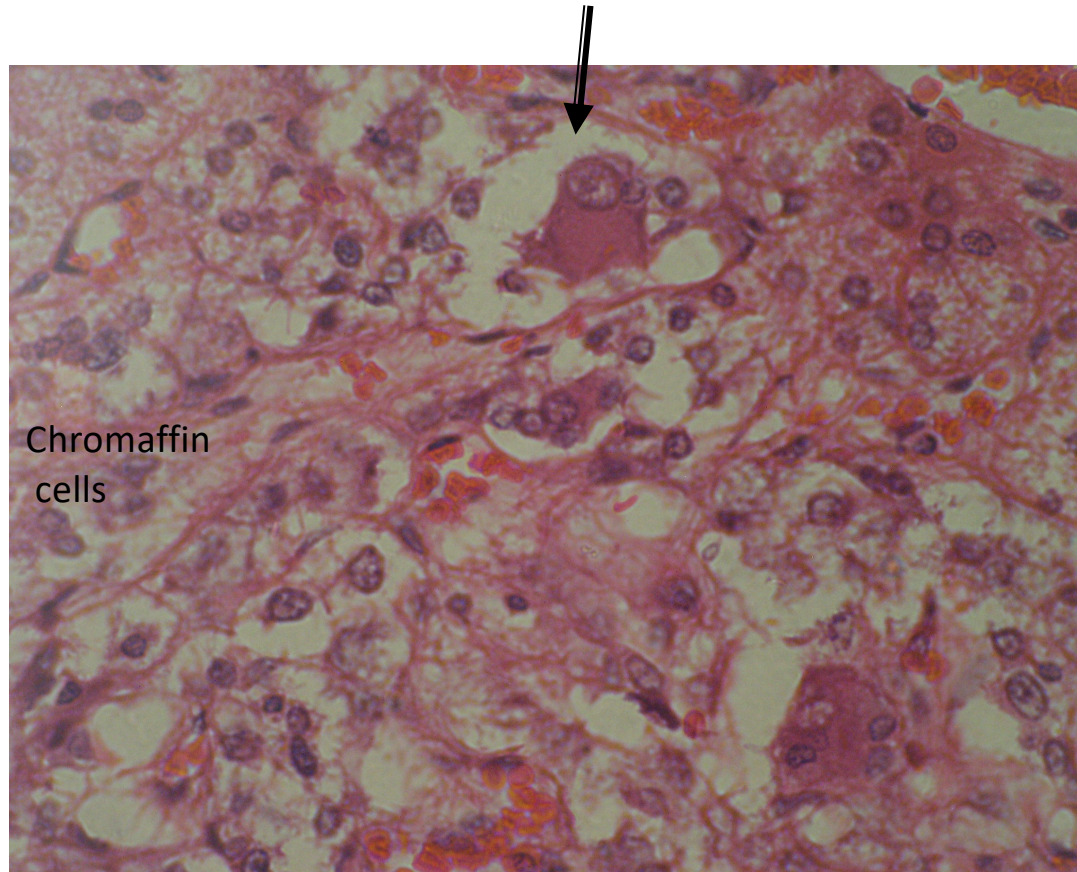




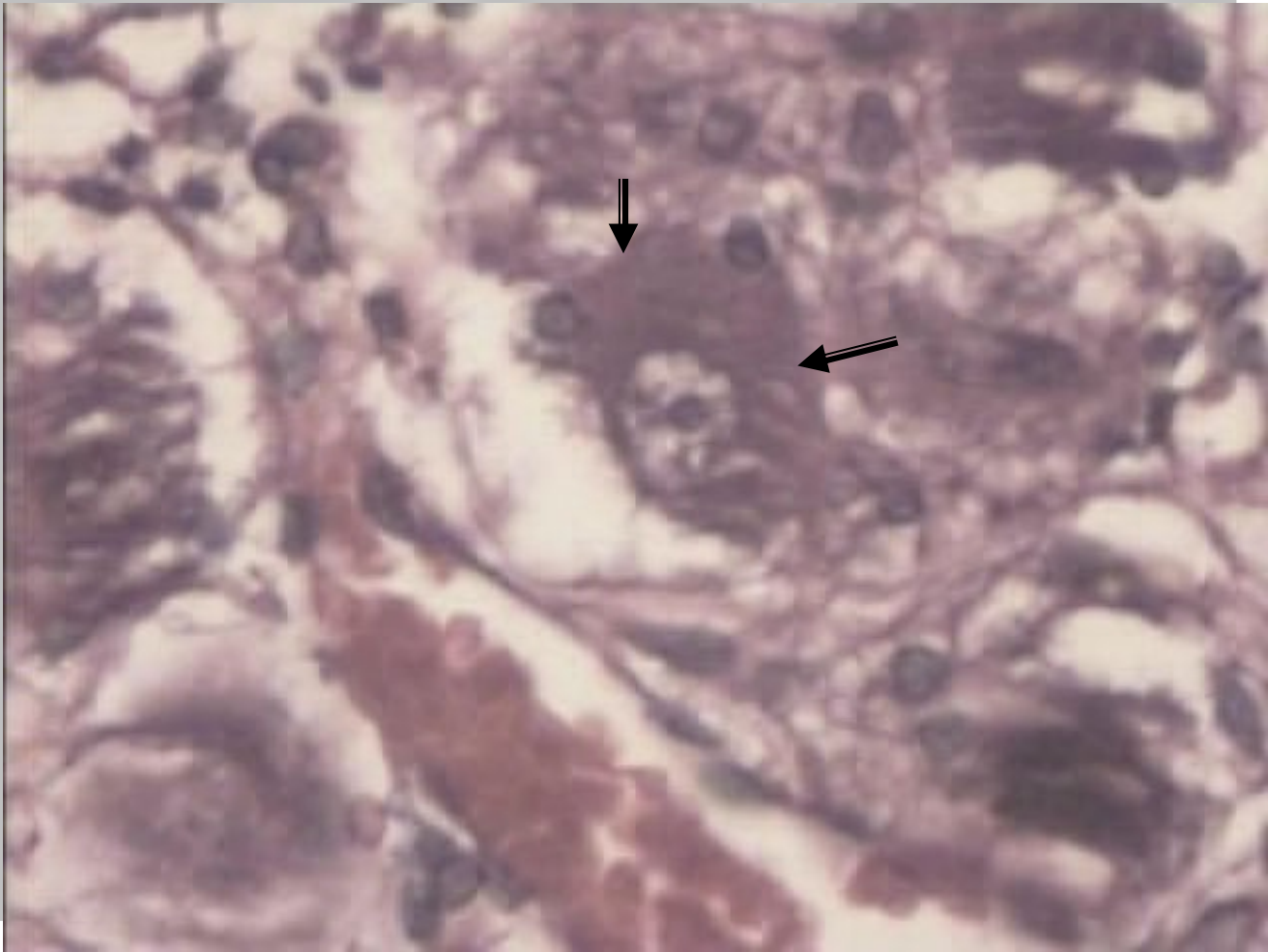
# Lipofuschin in Ganglionic cells



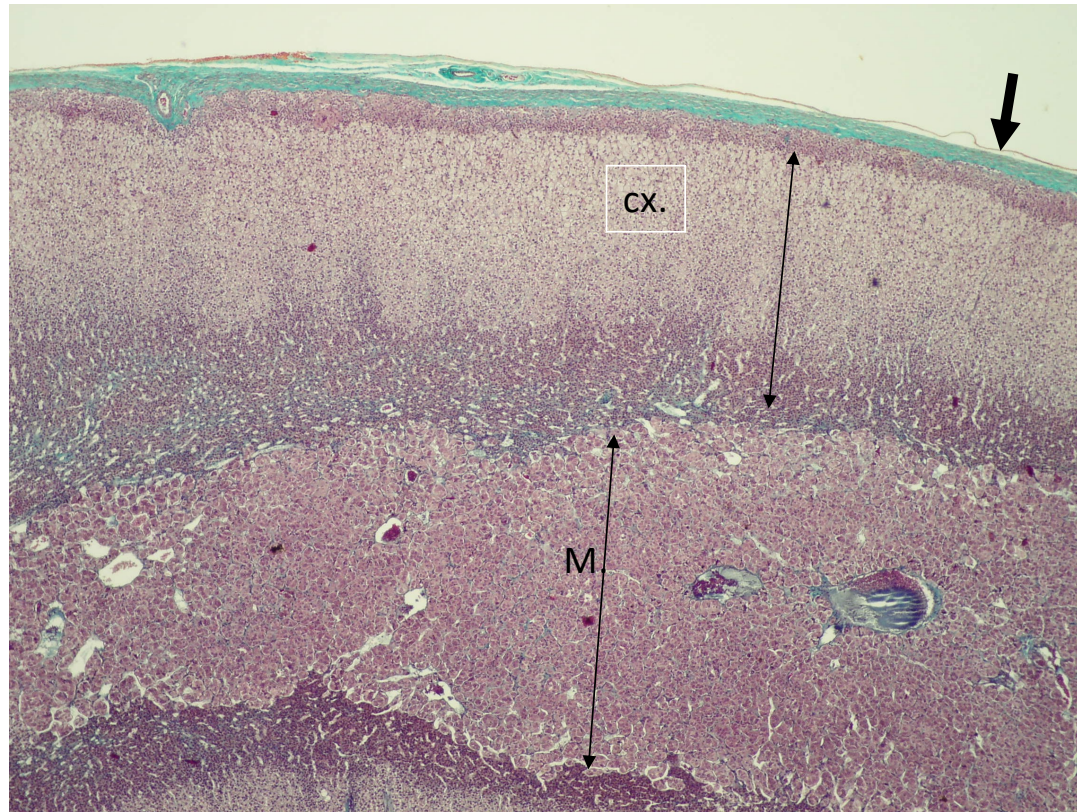
# Ganglionic cells





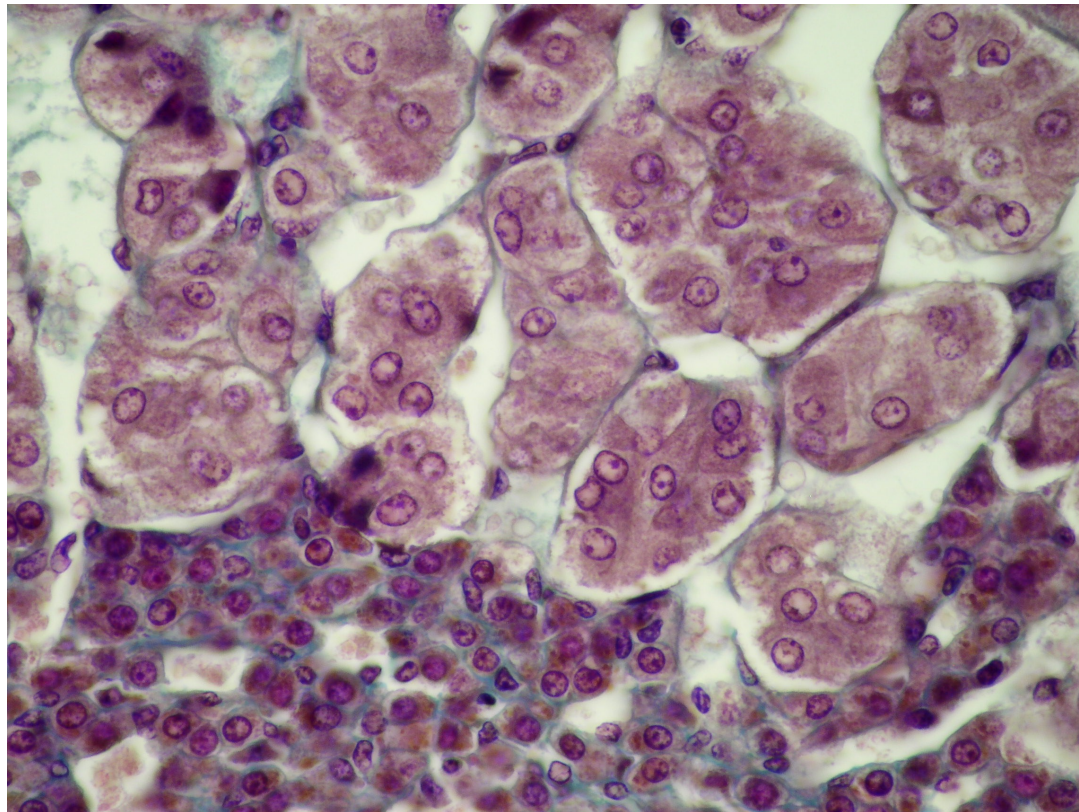


# Adrenal gland-special stain





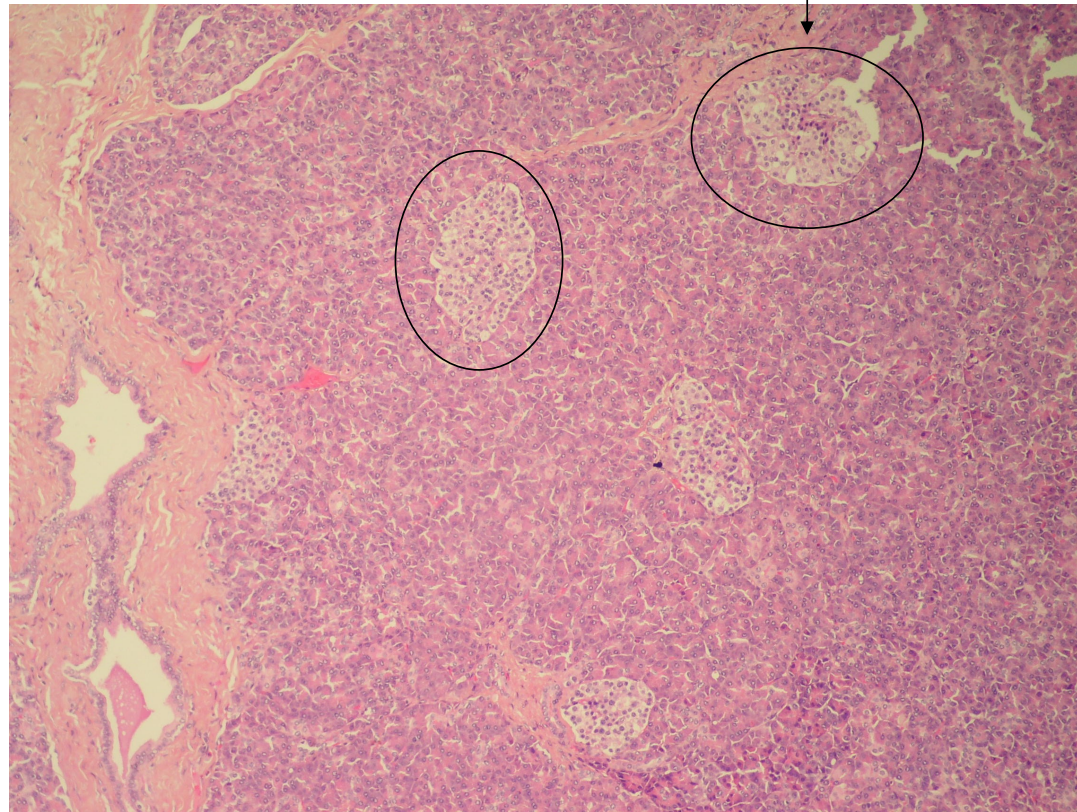
# Chromaffin cells in adrenal medulla



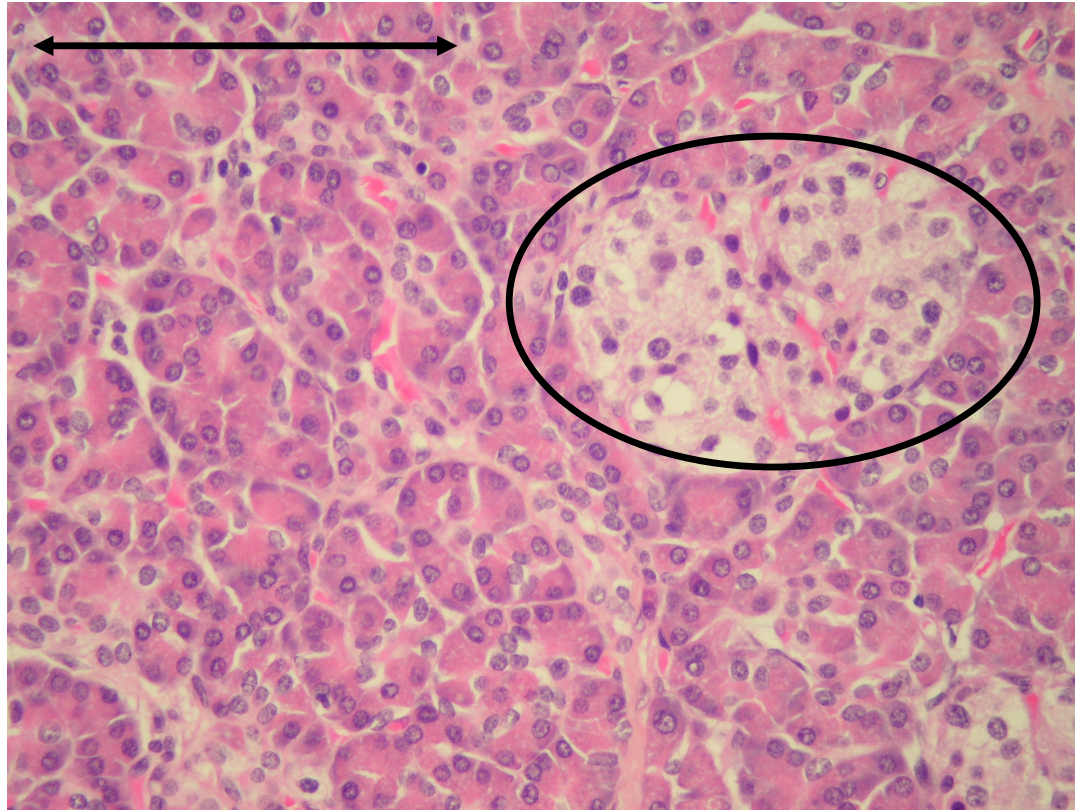
Pancreas  
( Islet of Langerhans)



# Pancreas (exocrine & endocrine)



Exocrine part & endocrine (islet of Langerhans)





# Types of endocrine cells

capillaries

