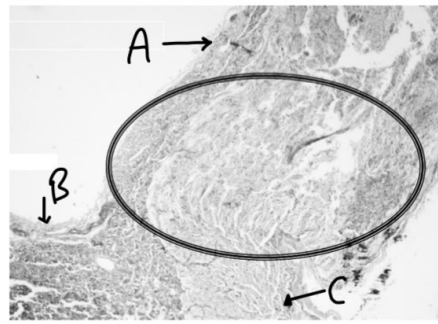


Test bank histo lab

done by bashaer

Which of the following true ?

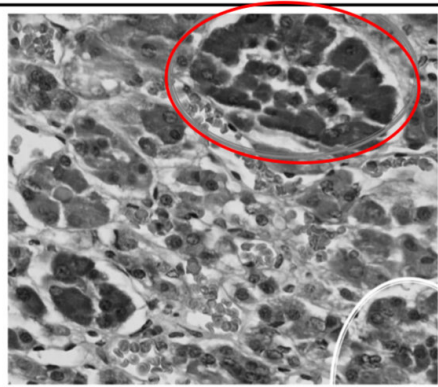
- A) A...pars intermedia , B...pars distalis , C...pars nervosa
- B) A...pars intermedia , B...pars nervosa , C...pars distalis
- C) A...pars tuberalis , B...pars nervosa , C...pars distalis



(C)

What is indicated by the circle represents?

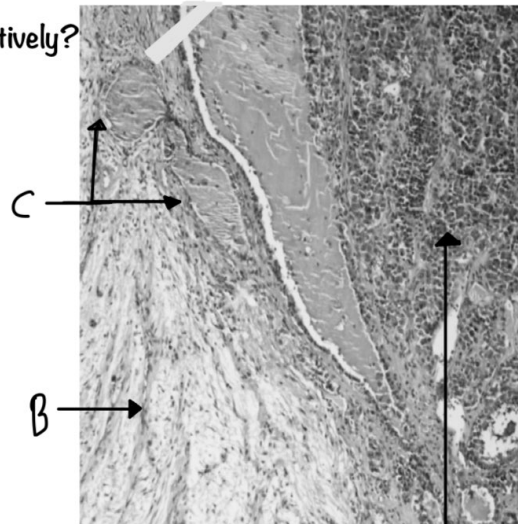
- A) basophil cells
- B) chromophobe cells
- C) acidophil cells
- D) capillaries



(C)

Which of the following true about A B C respectively?

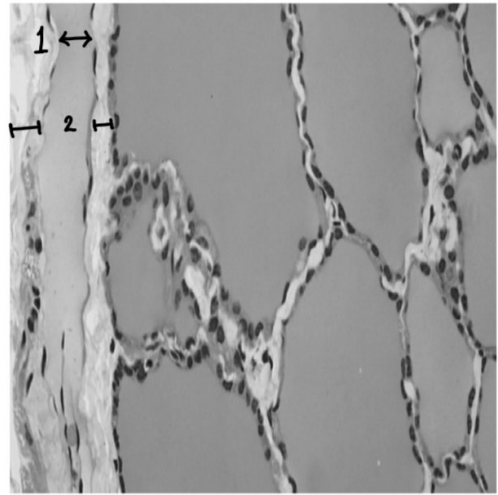
- A) neurohypophysis ,adenohypophysis , intermedia
- B) anterior lobe , posterior lobe , pars intermedia
- C) pars distalis , pars nervosa , follicle of p.intermedia



(C)

Which of the following true?

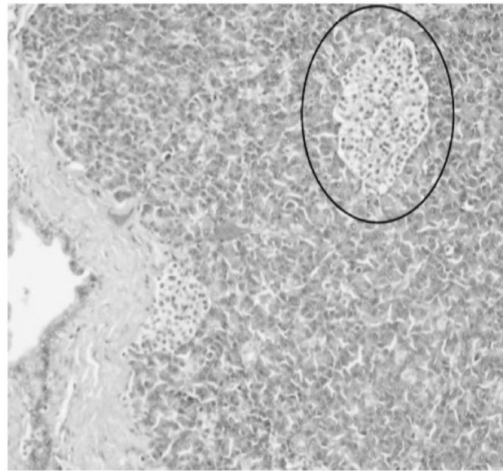
- A) this sample was taken from living cell
- B) this sample was taken from parathyroid gland
- C) 1...small vein, 2...connective tissue
- D) 1...capsule, 2...blood vessels
- E) 1... small vein, 2...capsule of peritracheal



C

Which of the following cells can be found in the indicated part?

- A) chief cells and oxyphil cells
- B) alpha cells and pp cells
- C) follicular and para follicular cells
- D) somatotroph and corticotroph

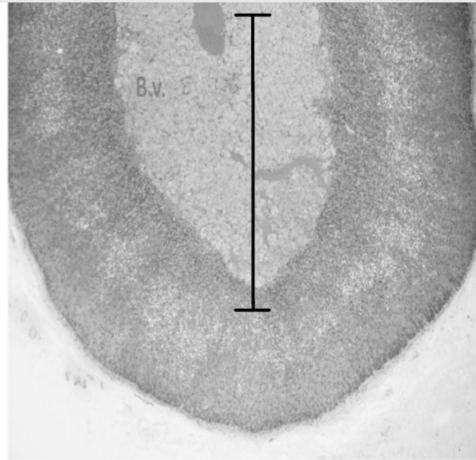


B

What does the arrow point to?

- A) medulla and layers of cortex
- B) medulla and zona reticularis
- C) medulla only
- D) medulla and zona fasciculata

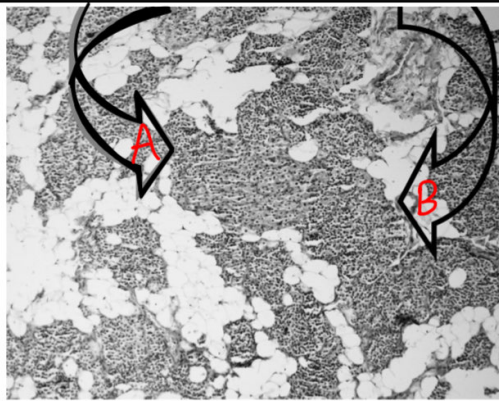
(B)



Which of the following true about A B respectively?

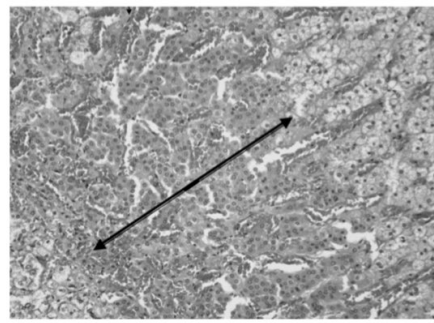
- A) basophilic(oxyphil cell), eosinophilic(chief cell)
- B) eosinophilic(oxyphil cell) , basophilic(chief cell)
- C) eosinophilic(chief cell) , basophilic(oxyphil cell)
- D) basophilic(chief cell) , eosinophilic(oxyphil cell)

(B)



What does the arrow point to?

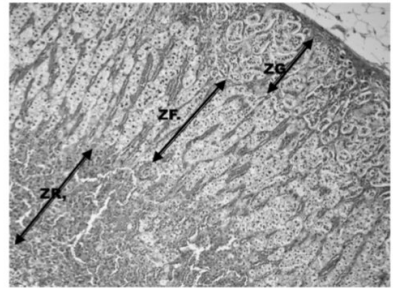
- A) zona glomeulosa
- B) zona reticularis and part of medulla
- C) zona fasciculata
- D) zona reticularis



(D)

This sample was taken from ?

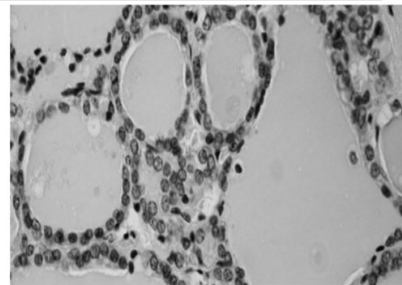
- A) thyroid gland
- B) pancreas
- C) Supra renal gland
- D) para thyroid gland



(C)

Which of the following true ?

- A) this section was taken from thyroid gland
- B) this section was taken from active cell
- C) These cells are simple cuboidal
- D) Between these follicles is the septa
- E) all ✓



What does the arrow point to?

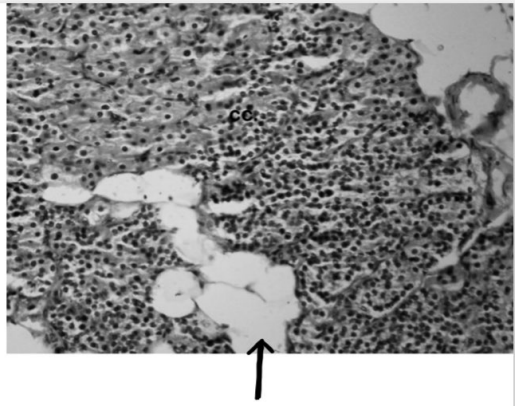
A) connective tissue

B) stroma-septa

C) adipose cells

D) capillaries

(C)



What does this section represent?

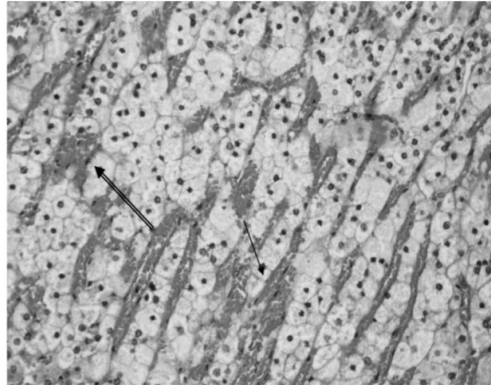
A) pars distalis

B) pars nervosa

C) zona glomeuloza

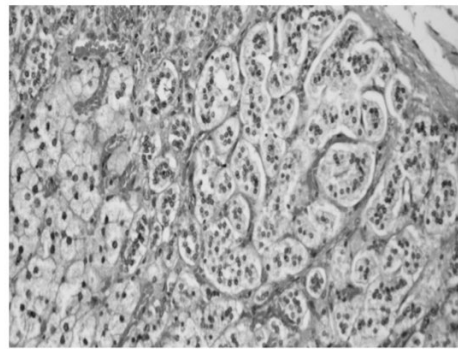
D) zona fasciculata

(D)



What does this section represent?

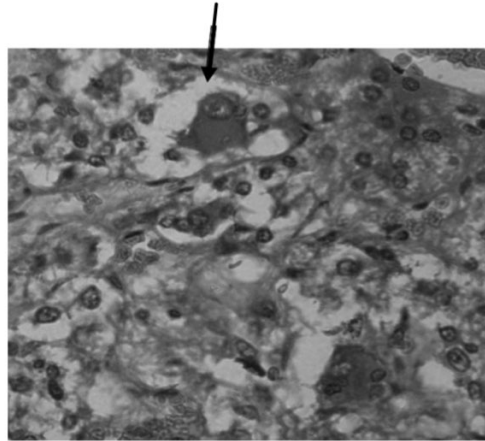
- A) chromaffin cells
- B) adrenal medulla
- C) acidophilic cells in pituitary
- D) a+b
- E) zona Glomeulosa



(E)

What does the arrow point to?

- A) adipose cells
- B) medullary vein
- C) Ganglionic cells
- D) Chromaffin cells



(C)

1 and 2 represent respectively?

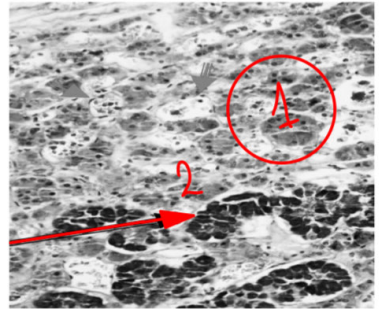
- A) pars distalis , pars intermedia
- B) septa , pars intermedia
- C) Rathke's pouch , follicles
- D) blood vessel , follicles



(C)

1 and 2 represent respectively?

- A) acidophil cells , basophil cells
- B) chromophobe cells , acidophil cells
- C) basophil cells , acidophil cells
- D) chromophobe cells , basophil cells



(D)

1 and 2 represent respectively?

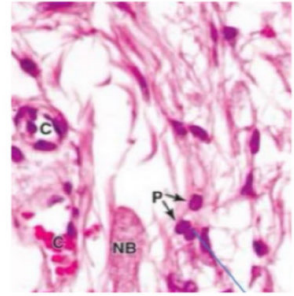
- A) capsule , zona glomeuloza
- B) septa , follicular cells
- C) capsule , adenohypophysis
- D) cortex , medulla



(C)

What does this picture represent?

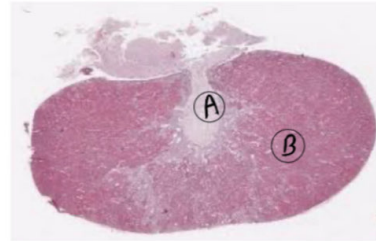
- a- Neurohypophysis
- b- Adenohypophysis
- c- Pars distalis
- d- Pars tuberalis



(A)

All of the following false except :

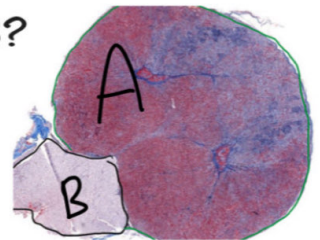
- a- Area B contain a lot of axon
- b- Area A is responsible for synthesis the hormones ADH and oxytocin
- c- The hormones that secreted from area A one of them act on kidney and other one act on uterus
- d- Between area A and area B there is pars tuberalis



(C)

Which of the following is true about regions A and B?

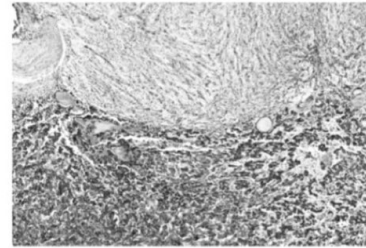
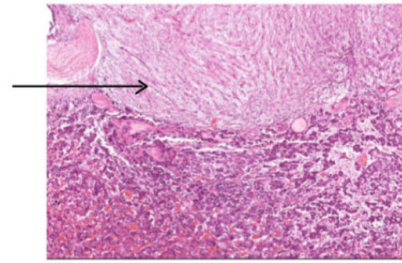
- a- A it's unmyelinated axons and glial
- b- A neurohypophysis , B adenohypophysis
- c- The hypophyseal portal population circulation carries ADH and oxytocin to the B



(C)

What does the arrow point to?

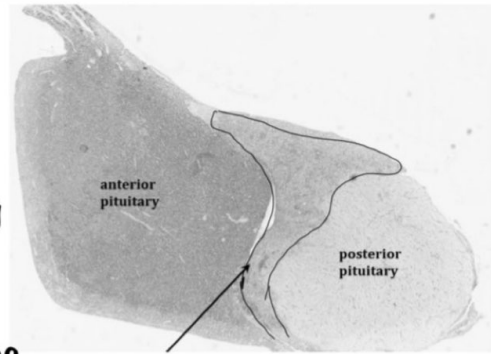
- a- anterior pituitary
- b- pars nervosa
- c- pars intermedia
- d- pars distalis



(B)

which of the following true about this section ?

- a- Small funnel-shaped region surrounding the infundibulum.
- b- Most of the cells of the are gonadotrophs
- c- contain colloid-filled cysts derived from the lumen of the embryonic hypophyseal pouch.

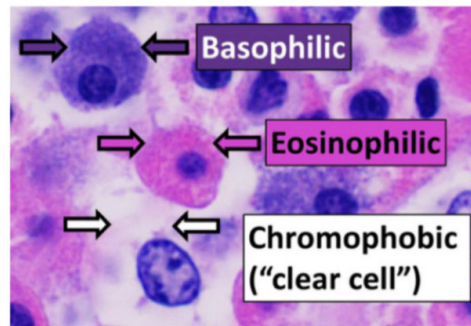


d- (b+c)

(C)

this section taken from ?

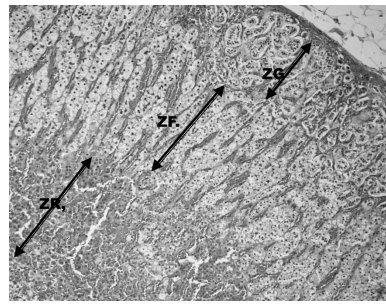
- a- pars tuberalis
- b- pars distalis
- c- pars intermedia



(B)

Which of the following true ?

- A) ZG It has less vacuoles than ZF
- B) ZF it has more lipid droplet than ZR
- C) ZR it has fewer lipid droplet and more lipofuscin pigment

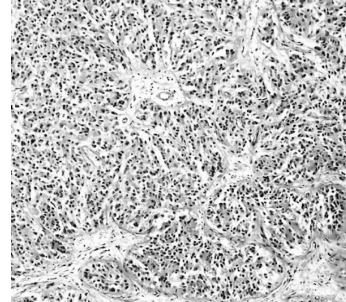


D) The outer zone is slightly less whitish and more pinkish

E) all true ✓

These cells secrete which of the following?

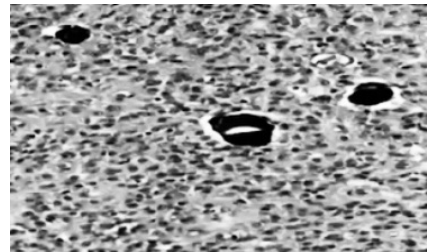
- A) ACTH and TSH
- B) insulin and glucagon
- C) ADH and oxytocin
- D) melatonin



D

this section represents ?

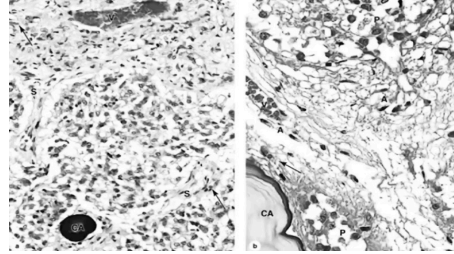
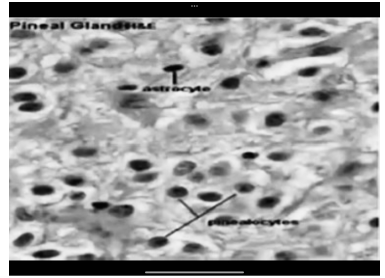
- A) pineal gland
- B) parathyroid gland
- C) islet of langerhans
- D) anterior pituitary



A

All of the following can you see in this section except ?

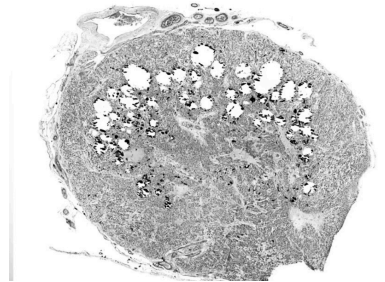
- A) venules
- B) pinealocytes
- C) astrocytes
- D) Extracellular mineral deposit
- E) Unmyelinated parasympathetic nerve fibers



E (sympathetic)

Which of the following true ?

- A) This sample was taken from a child
- B) white regions represent adipose cells
- C) the white regions represent Unmyelinated sympathetic nerve fibers
- D) The white circles occurred during sample preparation and washing



D

