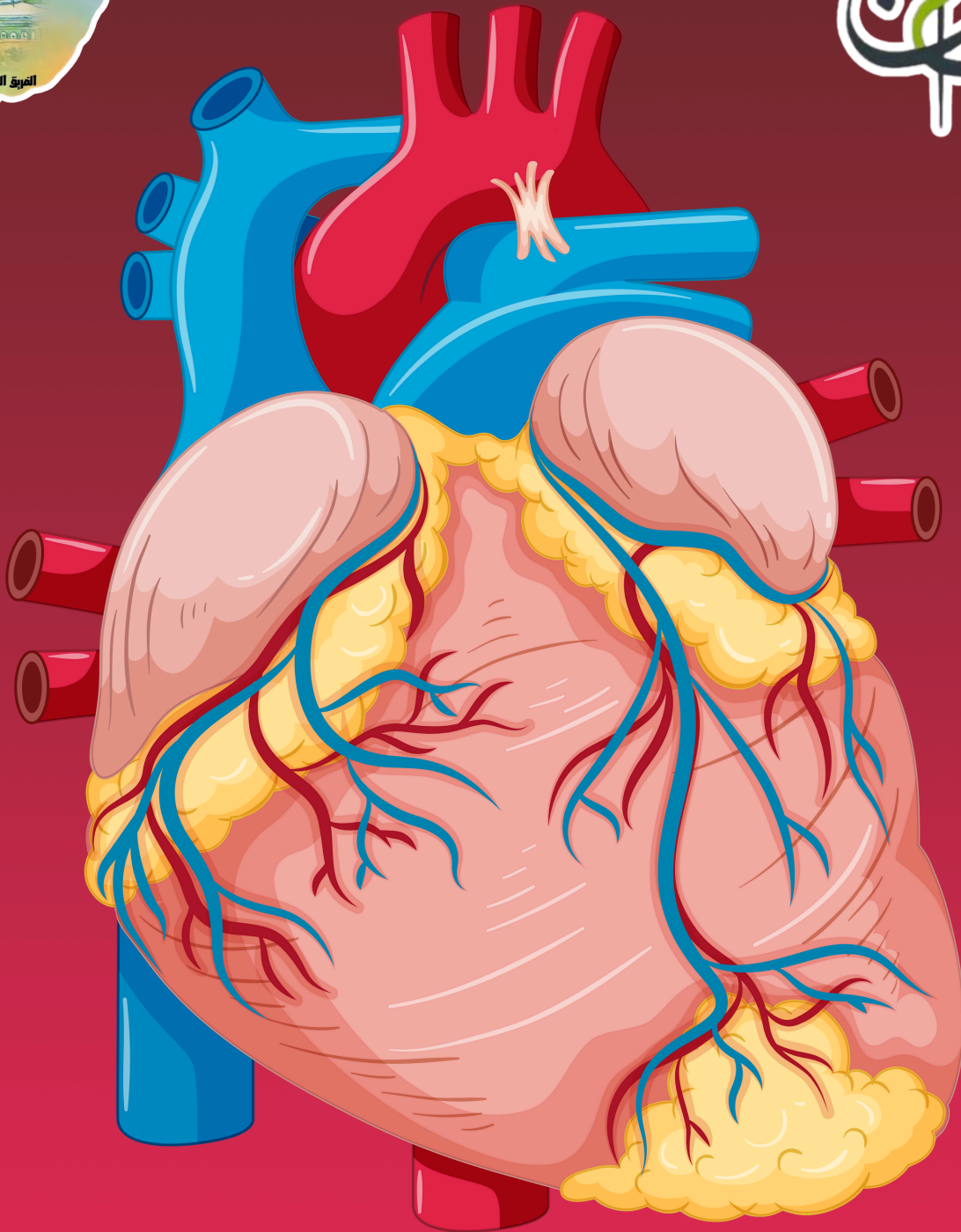


HISTOLOGY - TEST BANK

CVS



Histology / Past papers

1. Fenestrated capillaries are found in:

- A. Kidney
- B. Spleen
- C. Liver
- D. Bone marrow
- **Answer: A**

2. Internal elastic lamina is prominent in:

- A. Radial artery
- B. Common carotid artery
- C. Descending thoracic aorta
- D. Arterioles
- **Answer: A**

3. The aorta is characterized by which of the following features?

- A. Thickened tunica adventitia with many vasa vasorum
- B. Thin tunica media
- C. Indistinct internal elastic lamina
- D. Thick wall and narrow lumen
- **Answer: C**

4. Which of the following components prevents vessel coagulation?

- A. Endothelium
- B. Tunica adventitia
- C. Tunica media
- D. Platelets
- **Answer: A**

5. Which of the following layers of the heart contains smooth muscle cells?

- A. Myocardium
- B. Epicardium
- C. Endocardium

- D. None of the above
- **Answer: C (myoelastic layer)**

6. The aorta is considered as a conducting artery:

- A. True
- B. False
- **Answer: A (Large and elastic A)**

7. Which sentence is true?

- A. Smooth muscle cell is responsible for synthesis of collagen and elastin
- B. Smooth muscle cell is not responsible for synthesis of collagen and elastin
- C. Smooth muscle cell is responsible for synthesis of only collagen
- D. Smooth muscle cell is responsible for synthesis of only elastin
- **Answer: A**

Test Bank:

1. Which layer of the heart wall is the thickest?

- A. Endocardium
- B. Myocardium
- C. Epicardium
- D. Pericardium
- **Answer: B**

2. What is the main function of Atrial Natriuretic Peptide (ANP)?

- A. Increase blood pressure
- B. Reduce extracellular fluid volume
- C. Increase heart rate
- D. Decrease renal sodium excretion
- **Answer: B**

3. The epicardium corresponds to which layer of the pericardium?

- A. Parietal layer
- B. Visceral layer

- C. Fibrous layer
- D. Serous layer
- **Answer: B**

4. Purkinje fibers are characterized by:

- A. Dense myofibrils
- B. Sparse myofibrils and high glycogen content
- C. Small size and dark staining
- D. High number of mitochondria
- **Answer: B**

5. Which type of blood vessel has the thickest tunica media?

- A. Capillaries
- B. Veins
- C. Arteries
- D. Venules
- **Answer: C**

6. The internal elastic lamina is most prominent in:

- A. Large veins
- B. Capillaries
- C. Medium-sized arteries
- D. Arterioles
- **Answer: C**

7. Which type of capillary is found in the kidneys and endocrine glands?

- A. Continuous capillaries
- B. Fenestrated capillaries
- C. Sinusoidal capillaries
- D. Discontinuous capillaries
- **Answer: B**

8. What is the primary function of the endothelium in blood vessels?

- A. Provide structural support

- B. Act as a semipermeable barrier
- C. Store nutrients
- D. Produce red blood cells
- **Answer: B**

9. Which layer of blood vessels contains vasa vasorum?

- A. Tunica intima
- B. Tunica media
- C. Tunica adventitia
- D. Endothelium
- **Answer: C**

10. The aorta is classified as which type of artery?

- A. Muscular artery
- B. Elastic artery
- C. Arteriole
- D. Capillary
- **Answer: B**

11. Which component is absent in the tunica media of veins?

- A. Smooth muscle cells
- B. Collagen fibers
- C. Elastic fibers
- D. External elastic lamina
- **Answer: D**

12. What type of capillary is most common in muscle and nervous tissue?

- A. Continuous capillaries
- B. Fenestrated capillaries
- C. Sinusoidal capillaries
- D. Discontinuous capillaries
- **Answer: A**

13. Which layer of the heart contains Purkinje fibers?

- A. Endocardium
- B. Myocardium
- C. Epicardium
- D. Pericardium
- **Answer: A (in subendocardial layer)**

14. The primary role of arterioles is to:

- A. Store blood
- B. Regulate blood pressure
- C. Exchange gases and nutrients
- D. Return blood to the heart
- **Answer: B (major determinants of systemic BP)**

15. Which type of artery is known for its ability to regulate blood pressure by contracting or relaxing smooth muscle?

- A. Elastic artery
- B. Muscular artery
- C. Arteriole
- D. Capillary
- **Answer: B**

16. The subendocardial layer of the heart is part of which layer?

- A. Endocardium
- B. Myocardium
- C. Epicardium
- D. Pericardium
- **Answer: A**

17. Which type of capillary allows the most extensive molecular exchange?

- A. Continuous capillaries
- B. Fenestrated capillaries
- C. Sinusoidal capillaries

- D. Discontinuous capillaries
- **Answer: C**

18. The tunica intima of blood vessels is primarily composed of:

- A. Smooth muscle cells
- B. Connective tissue
- C. Endothelial cells
- D. Elastic fibers
- **Answer: C**

19. Which layer of the heart wall is responsible for contraction?

- A. Endocardium
- B. Myocardium
- C. Epicardium
- D. Pericardium
- **Answer: B**

20. The presence of valves is a characteristic feature of:

- A. Arteries
- B. Capillaries
- C. Veins
- D. Arterioles
- **Answer: C**

هو هكذا العلمُ الوطيدُ تصبُّرٌ
وإِماره تُؤتى لِمَن أسقاها

CREDITS TO:

IBRAHEM AL-SHAWABKEH

كل التوفيق لكم.

