



CVS module

Practical 1 Mediastinum

Dr. Ahmed Salman

Associate professor of anatomy & embryology

1st Practical check list

I-Parts of Mediastinum

II-Boundaries of Mediastinum

III-Contents superior Mediastinum

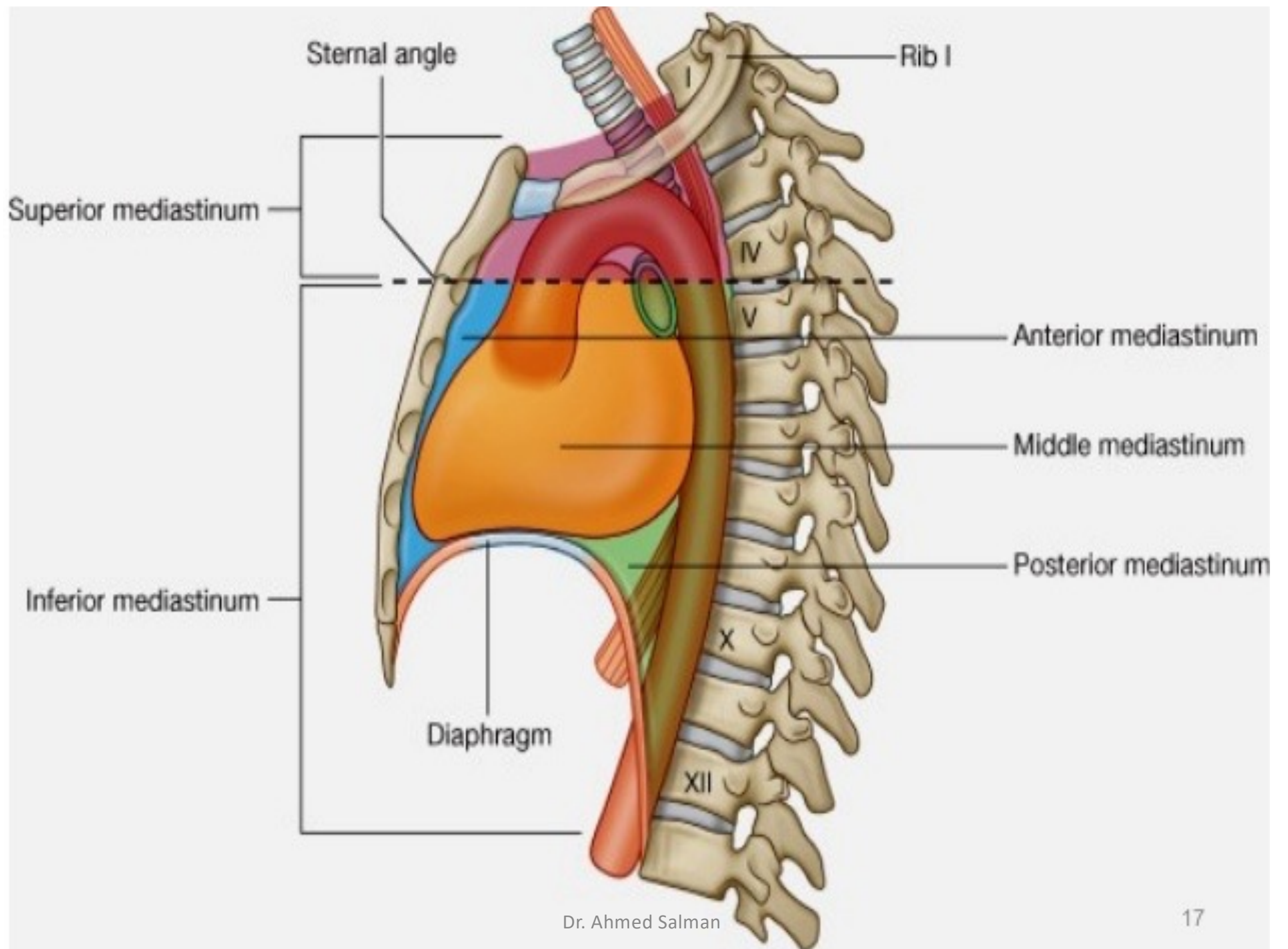
1. Arch of Aorta
2. Brachiocephalic trunk
3. Left common carotid artery
4. Left subclavian artery
5. Right and left brachiocephalic veins
6. Superior vena cava
7. Phrenic nerve
8. Vagus nerves
9. Recurrent laryngeal nerve
10. Trachea
11. Oesophagus

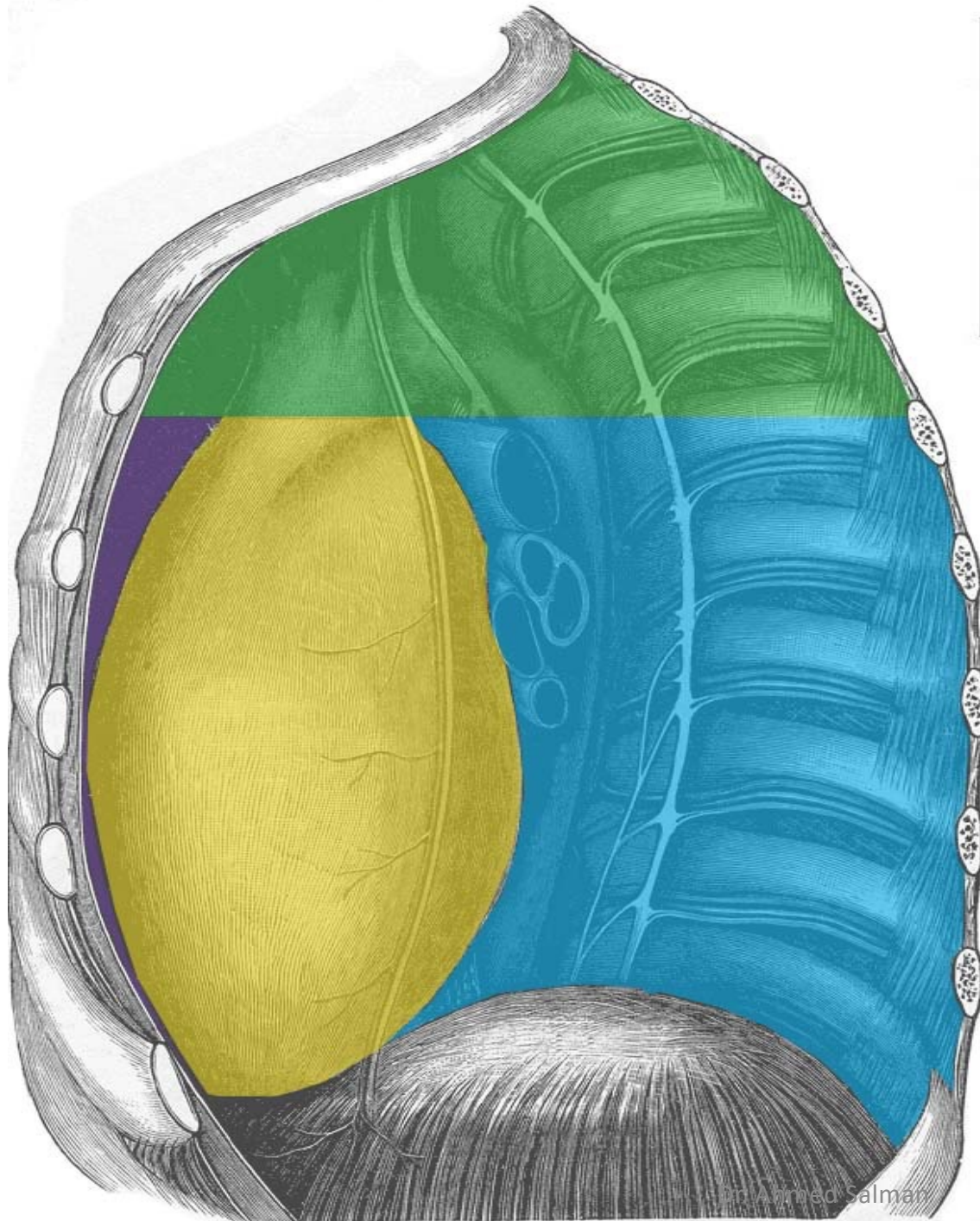
IV- Contents of posterior mediastinum

1. Descending thoracic aorta
2. Intercostal vessels
3. Azygos vein
4. Superior and inferior Hemiazygos vein
5. Thoracic duct
6. Vagus nerve
7. Oesophagus

V- Contents of middle mediastinum

1. Heart
2. Pericardium
3. Ascending aorta
4. Tracheal bifurcation and both main bronchi
5. Pulmonary trunk and right/left pulmonary arteries & veins
6. Phrenic nerve
7. Lower half of the SVC

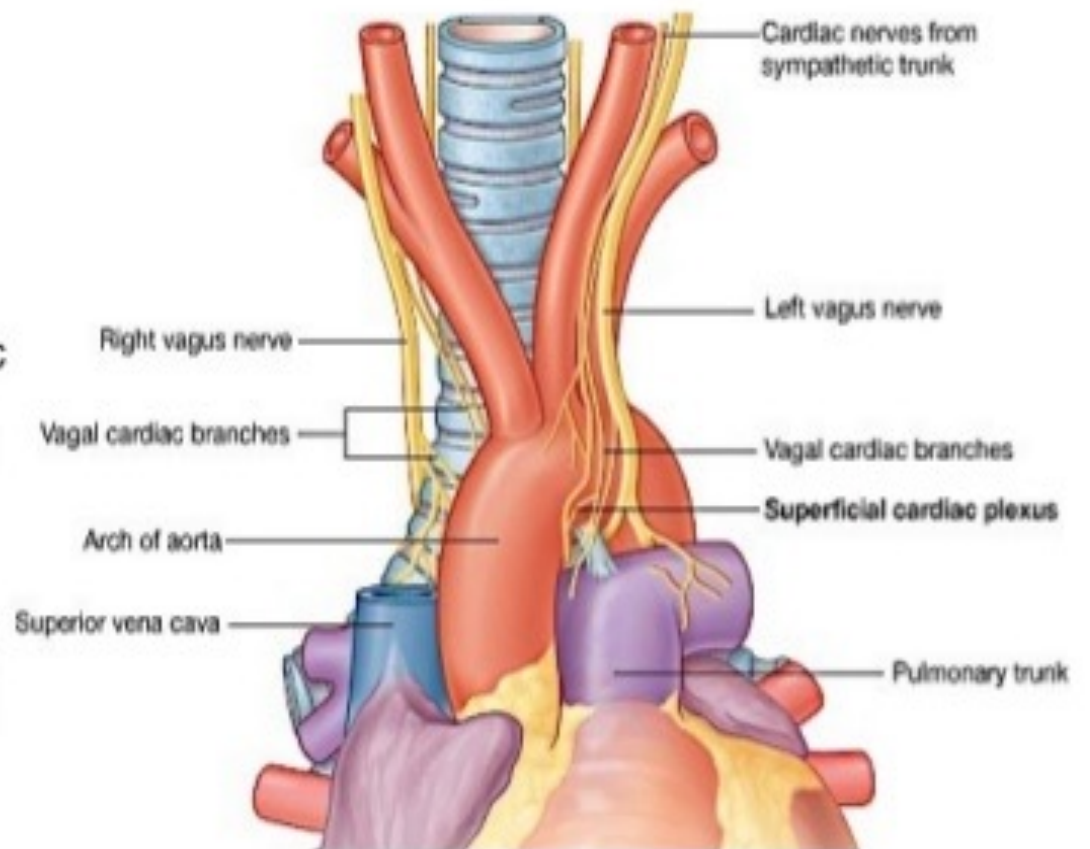
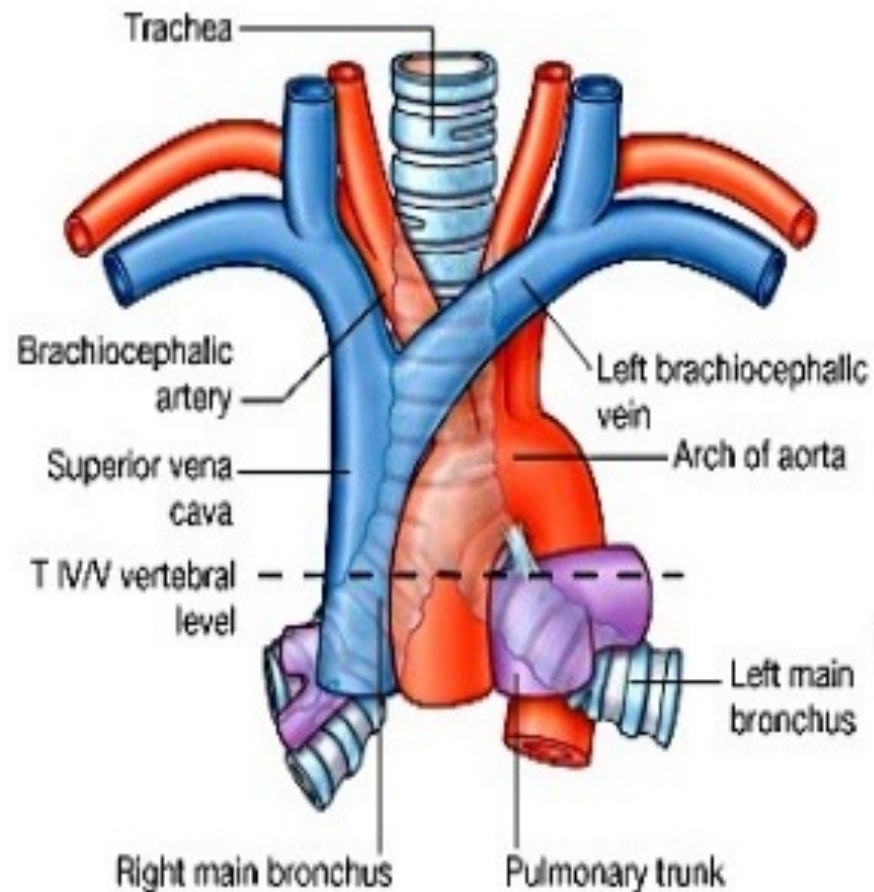


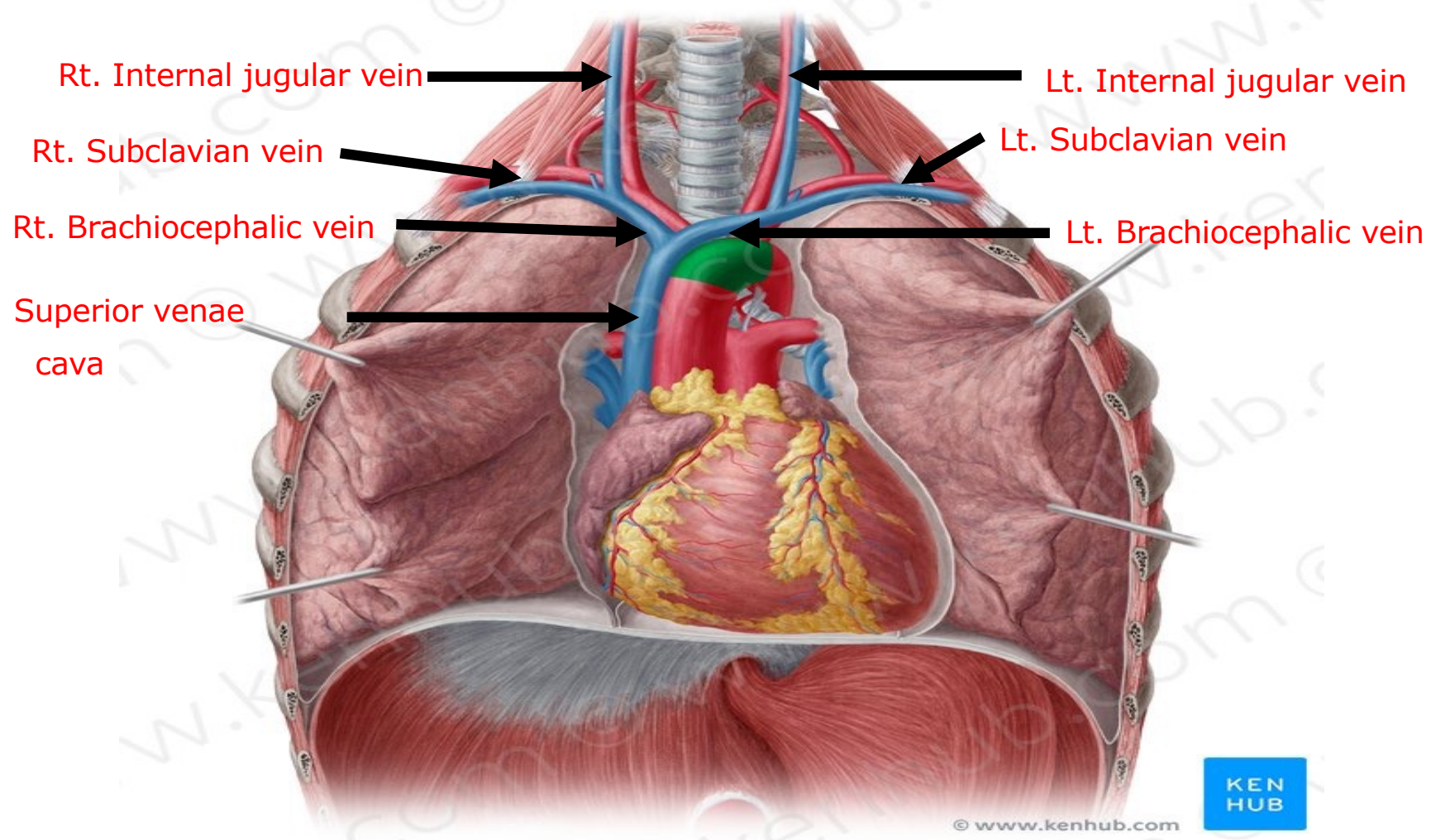


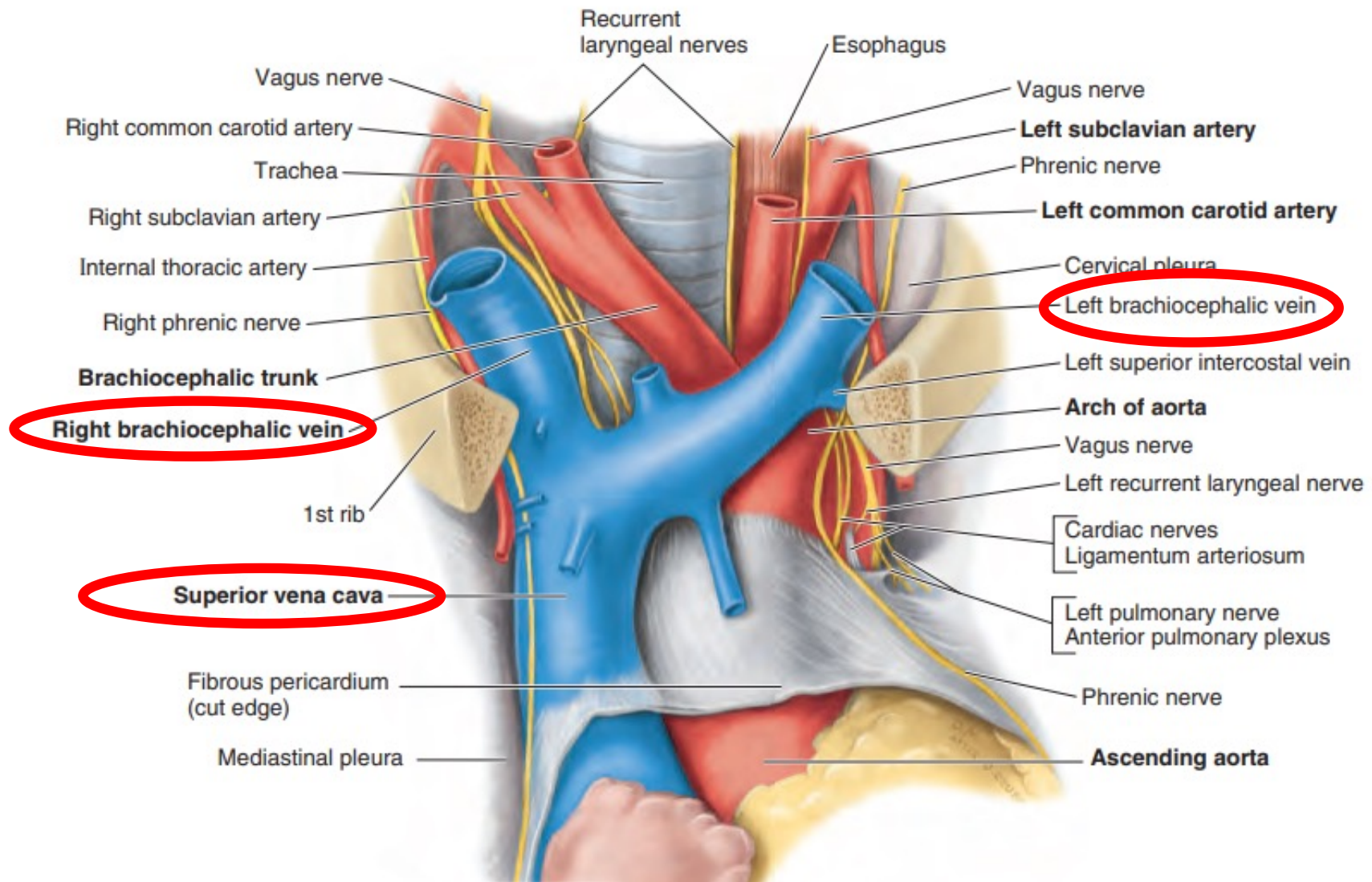
- Superior mediastinum
- Anterior mediastinum
- Middle mediastinum
- Posterior mediastinum

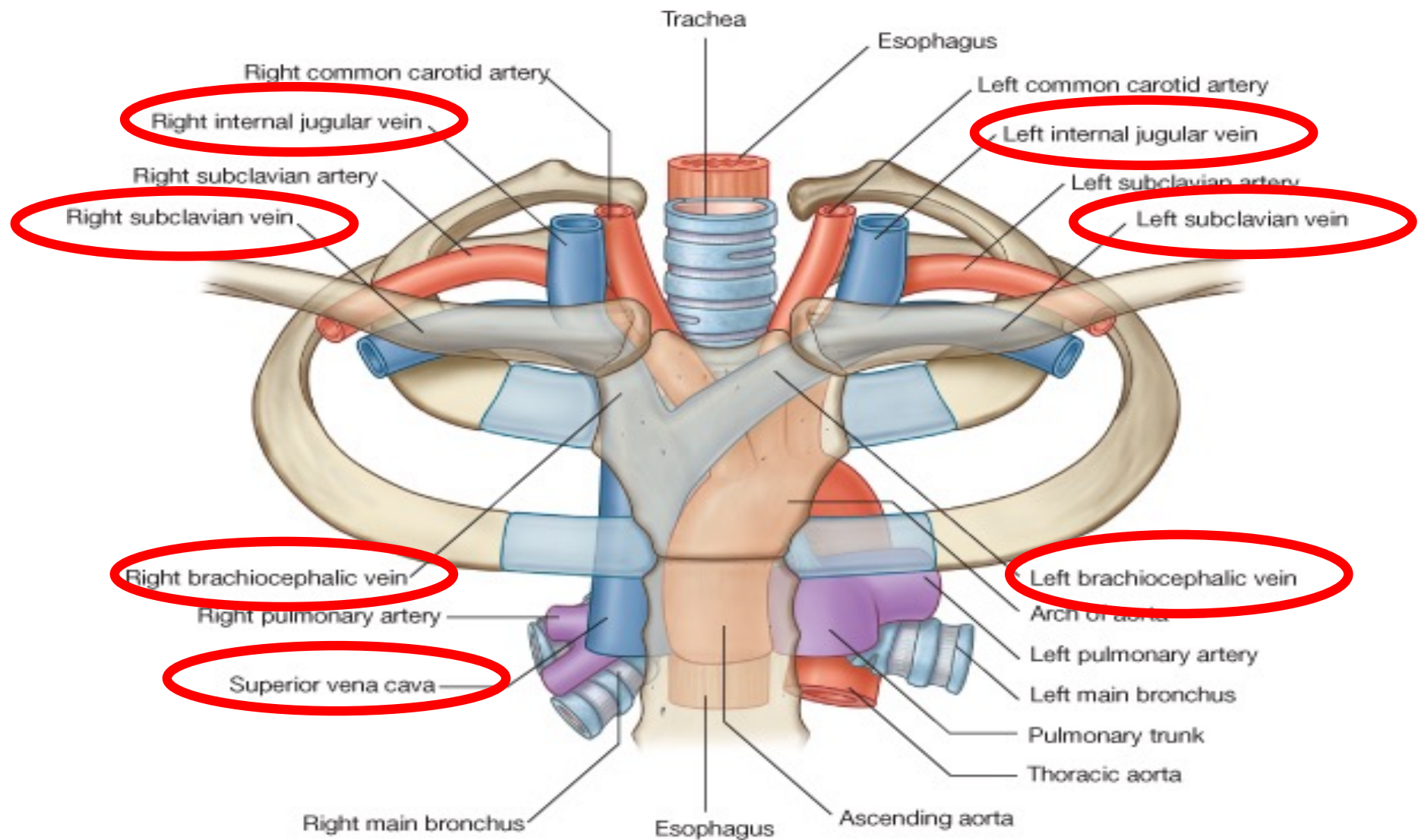
Dr. Ahmed Salman

Superior Mediastinum - contents



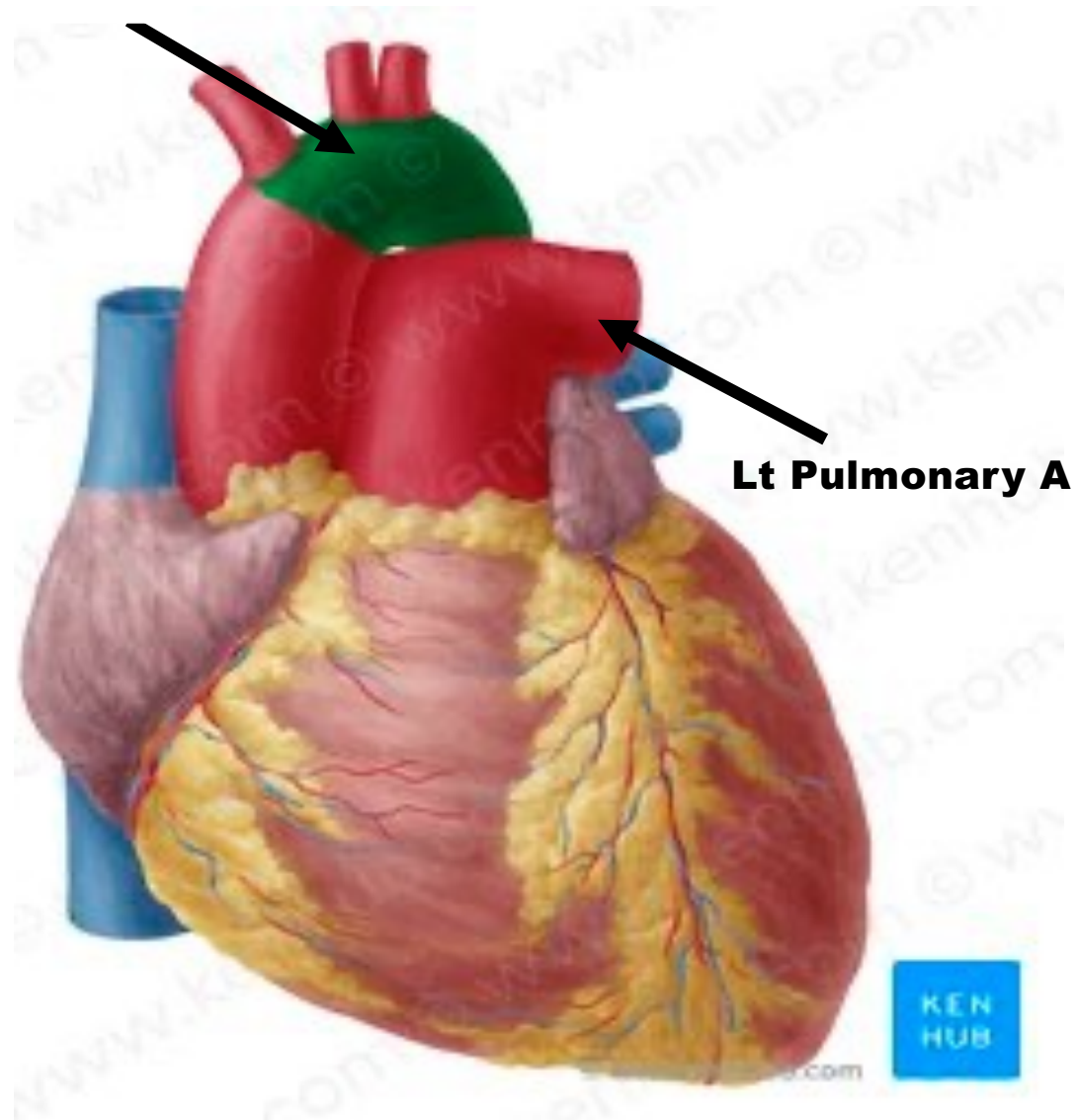


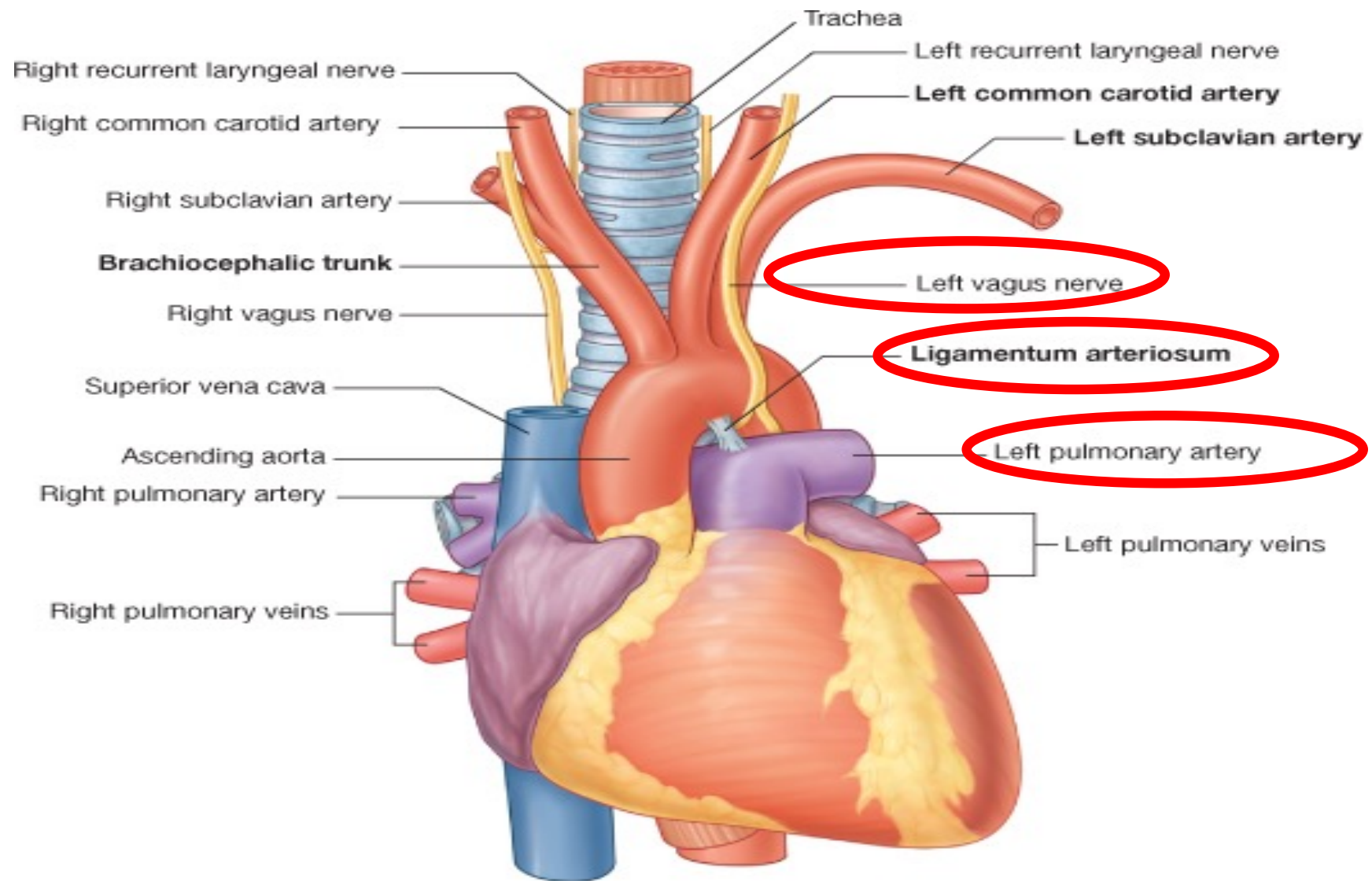




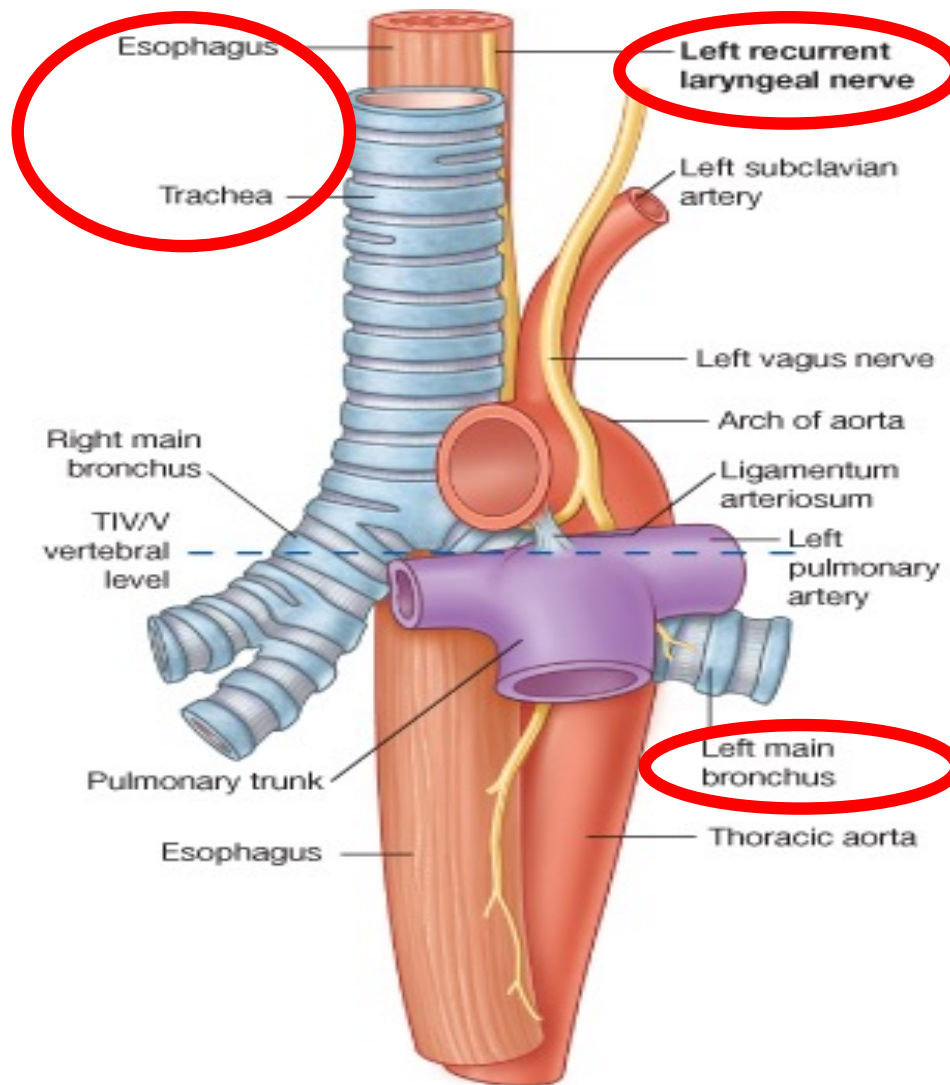
© Elsevier. Drake et al: Gray's Anatomy for Students - www.studentconsult.com

Arch of Aorta

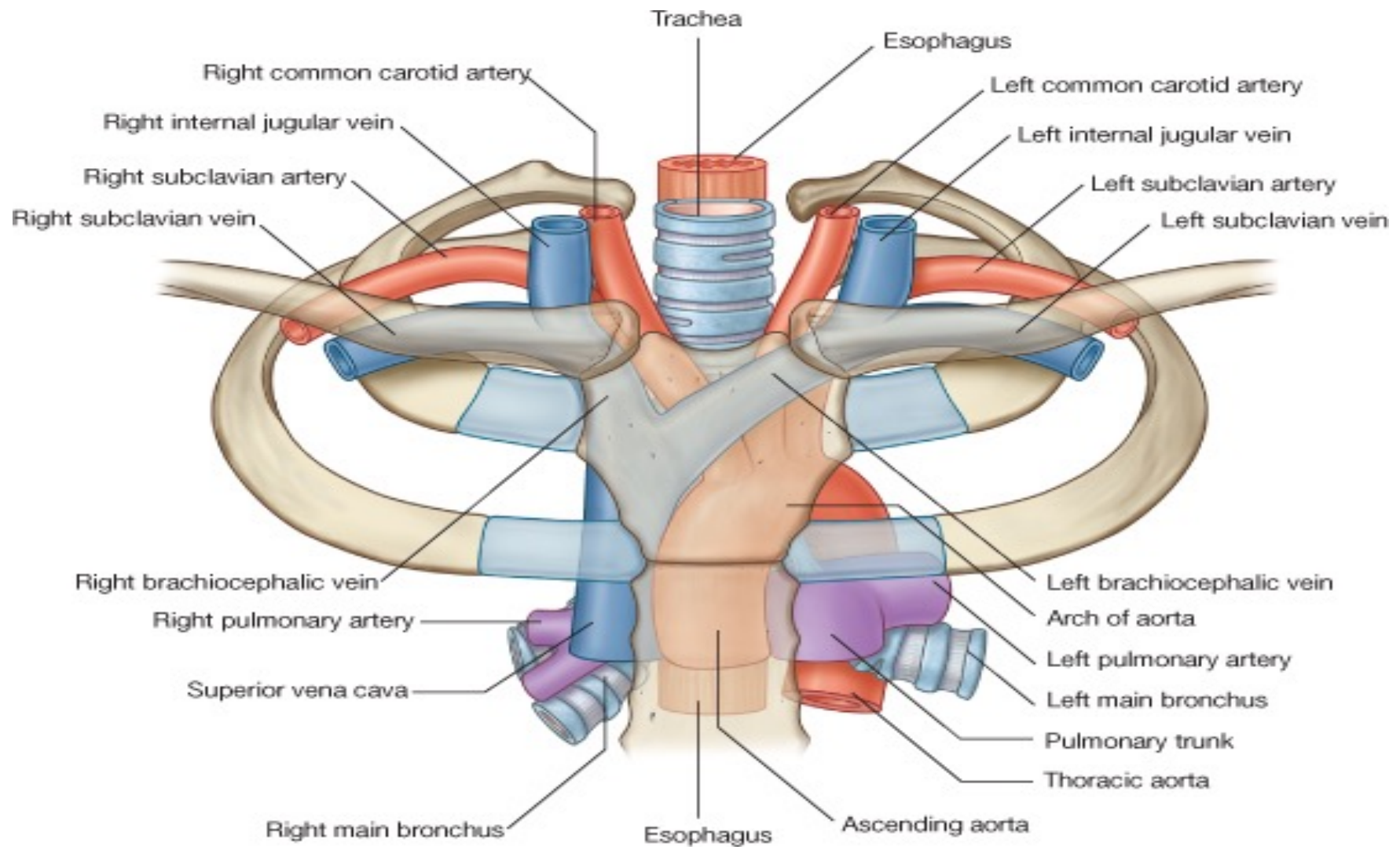




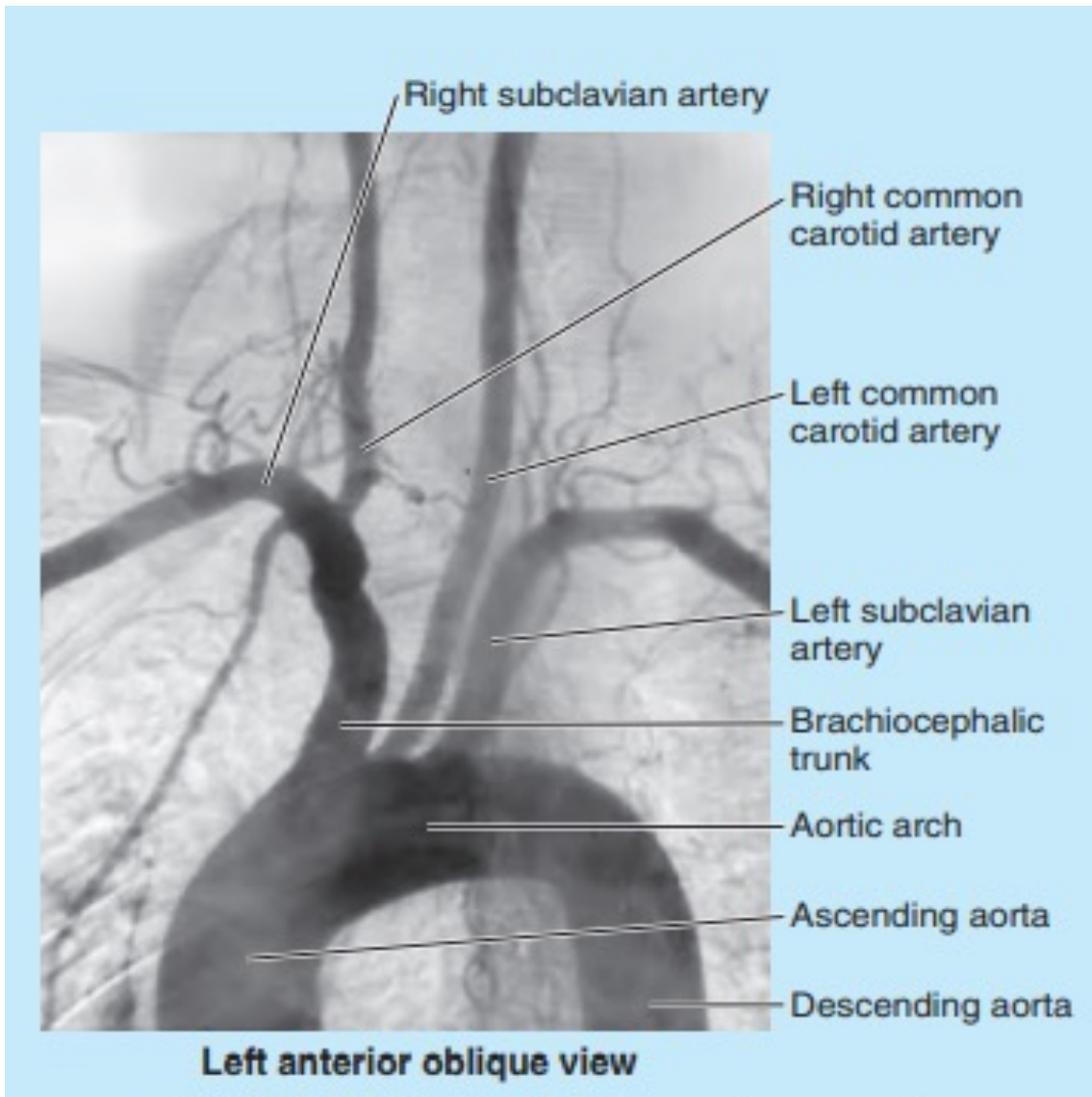
© Elsevier. Drake et al: Gray's Anatomy for Students - www.studentconsult.com



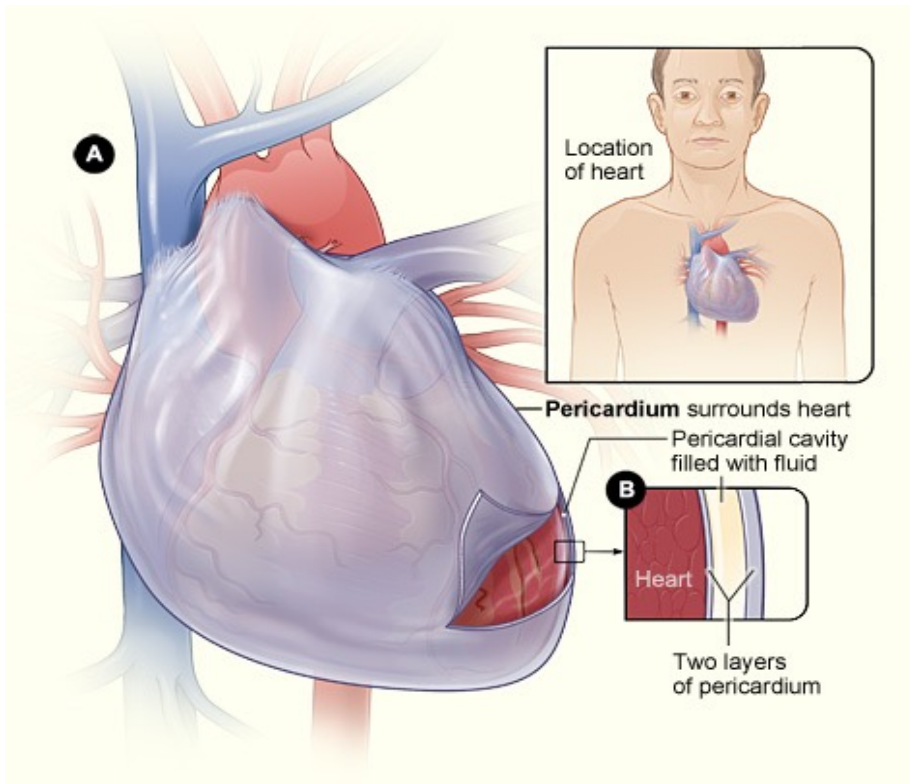
© Elsevier. Drake et al: Gray's Anatomy for Students - www.studentconsult.com



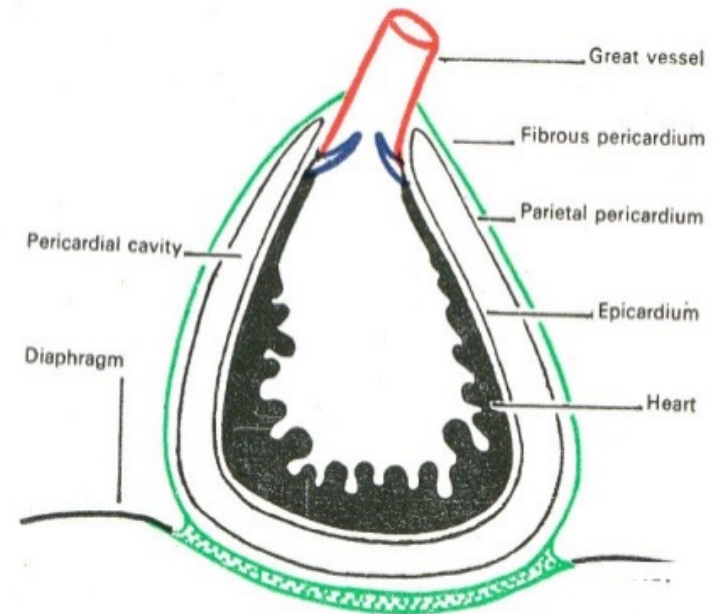
© Elsevier. Drake et al: Gray's Anatomy for Students - www.studentconsult.com

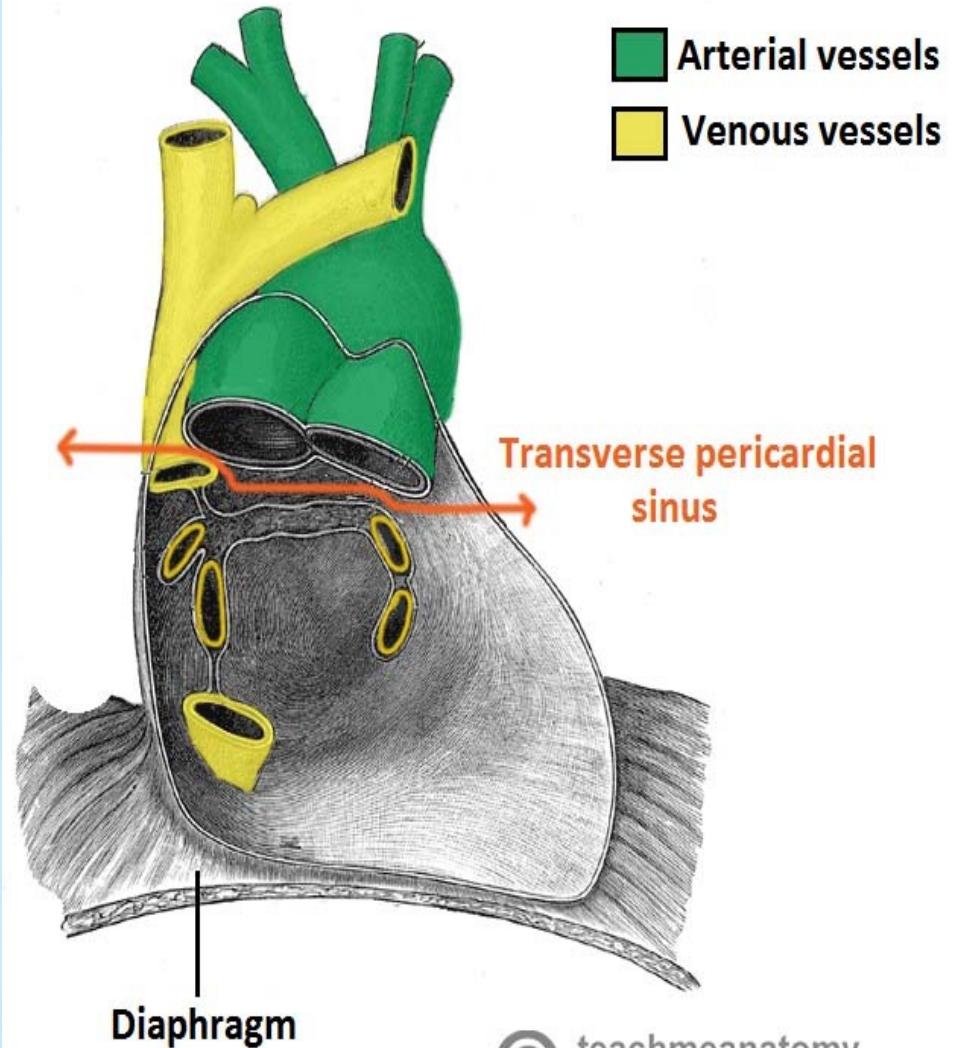
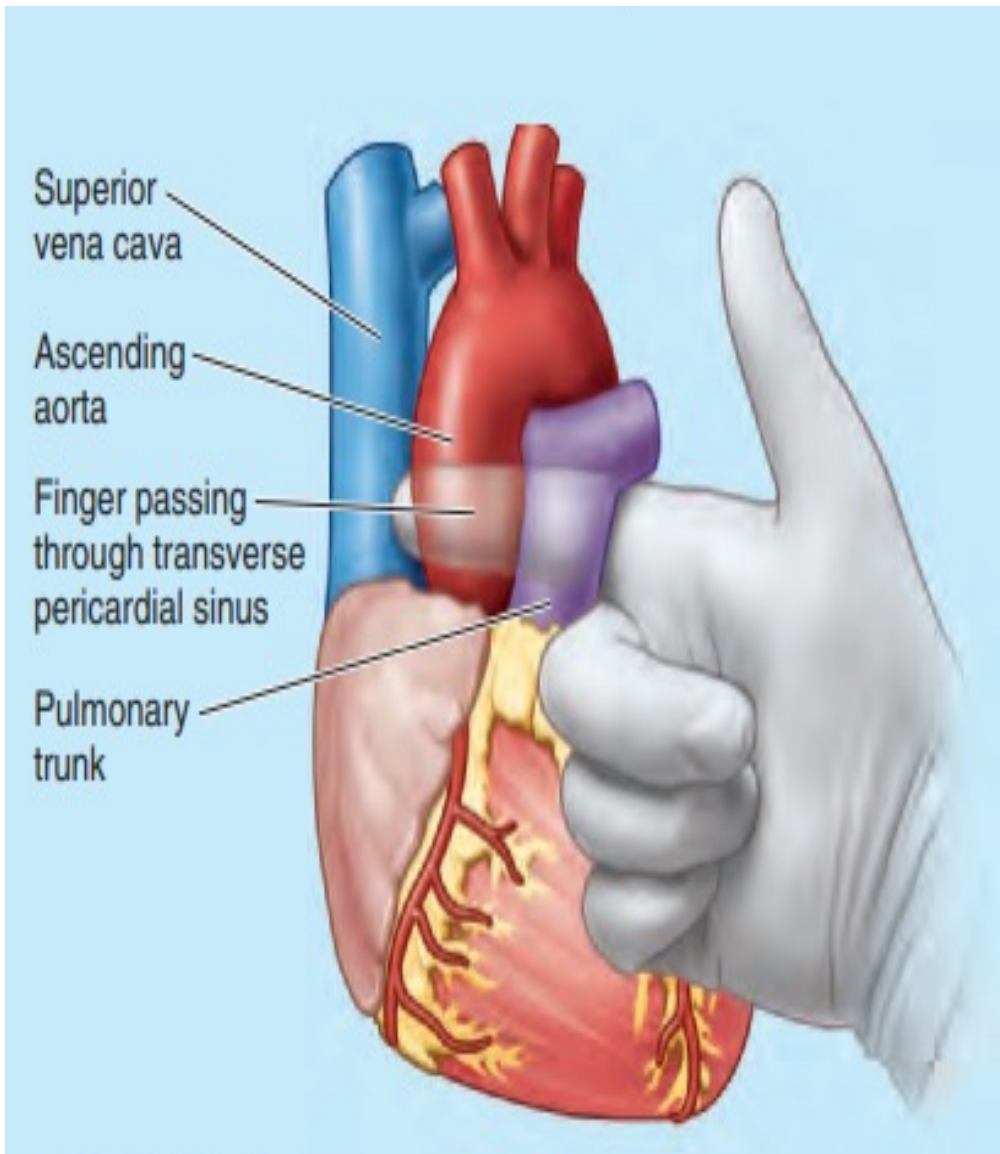


Aortic angiogram (aortogram)
Clinically Oriented Anatomy. Keith Moore.

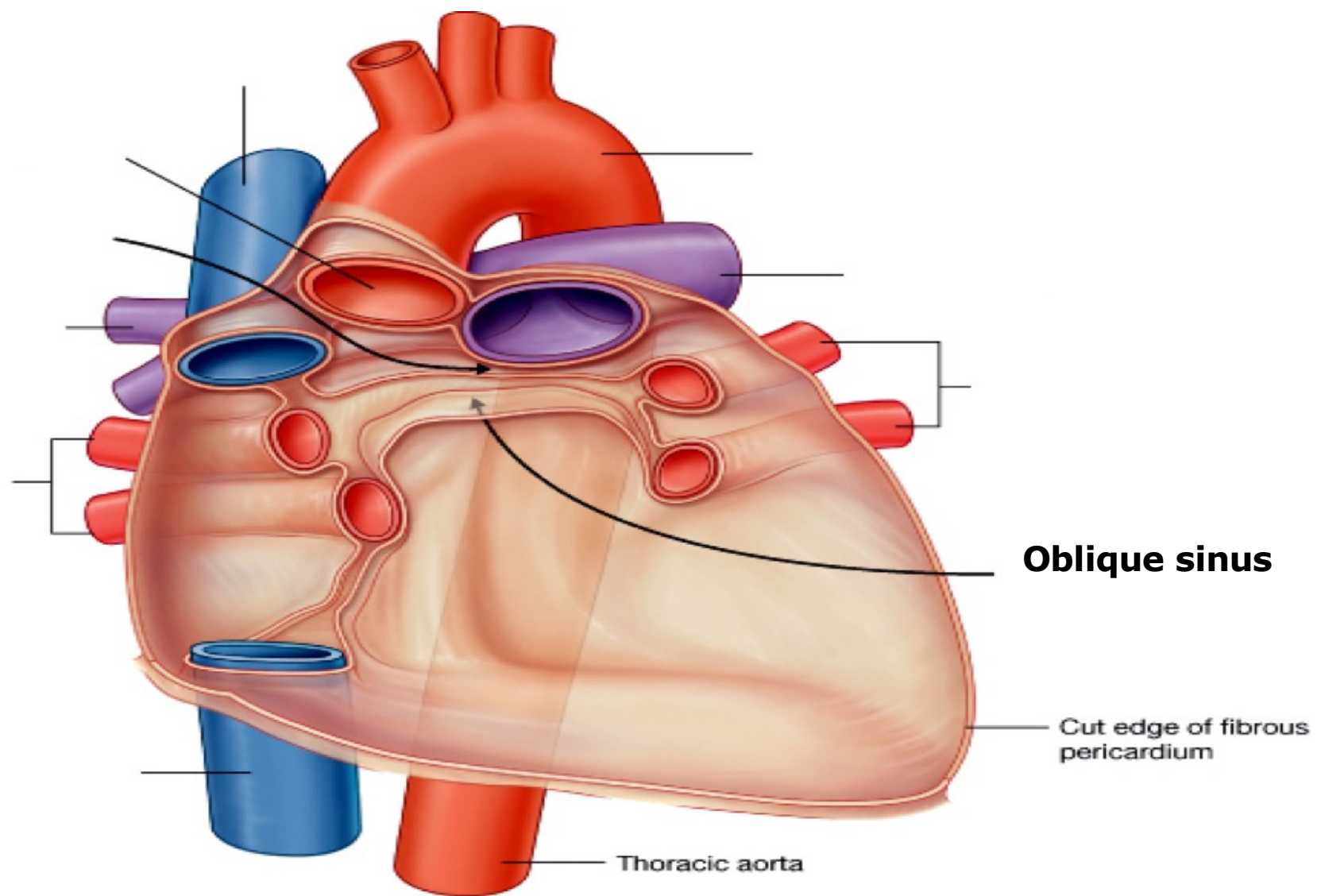


Layers of Pericardium





© teachmeanatomy
The #1 Applied Human Anatomy Site on the Web.



An illustration on a teal background. Two hands, one on the left and one on the right, are shown from the wrist up, holding a red rectangular sign with a white border. The sign contains the text 'Thank you!' in a white, cursive font. The background is decorated with various white and light blue geometric shapes: stars, circles, and starburst patterns. The hands are wearing white cuffs.

*Thank
you!*