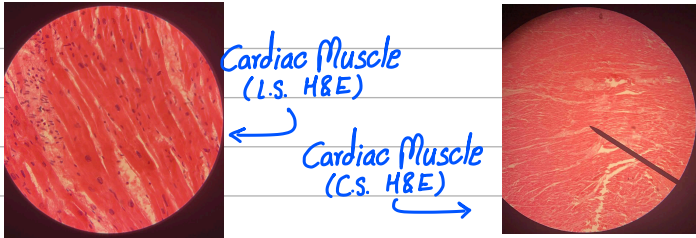


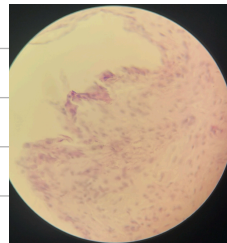
* L.S. ⇒ longitudinal Section
 C.S. ⇒ cross-sectional

* Periodic acid schiff stain

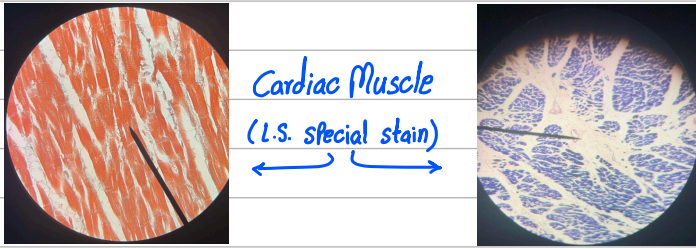


Cardiac muscle (L.S. H&E)

Cardiac muscle (C.S. H&E)



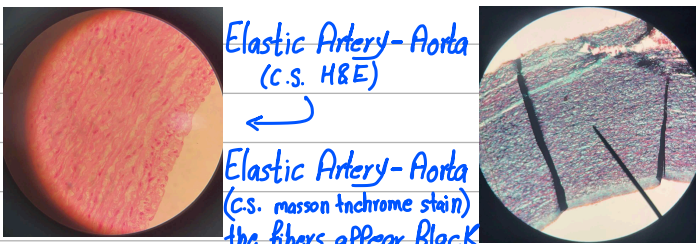
Purkinje fibers (PAS stain)



Cardiac muscle (L.S. special stain)

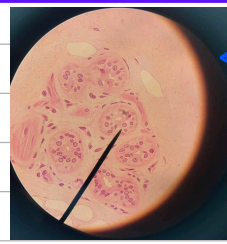


Neurovascular Bundle (C.S. H&E)



Elastic Artery - Aorta (C.S. H&E)

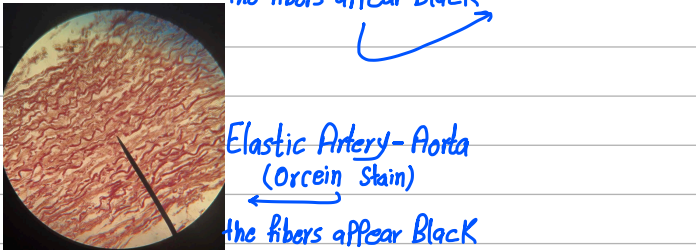
Elastic Artery - Aorta (C.S. Masson trichrome stain) the fibers appear Black



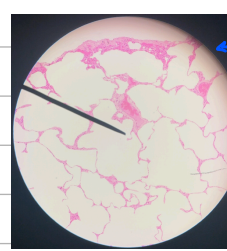
SKIN - Arterioles - Venules - Capillaries



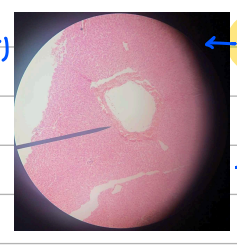
Spleen - Discontinuous capillaries - sinusoids



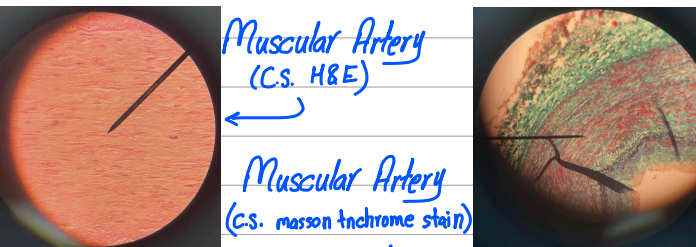
Elastic Artery - Aorta (Orcein stain) the fibers appear Black



LUNG (H&E) - continuous capillaries

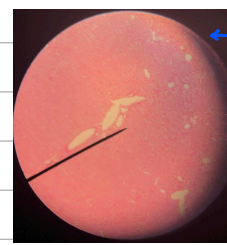


LIVER (H&E) - Discontinuous capillaries - sinusoids

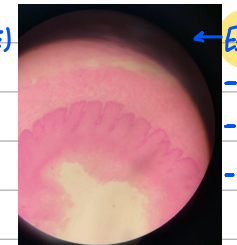


Muscular Artery (C.S. H&E)

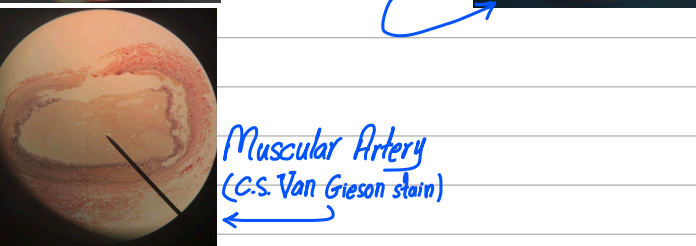
Muscular Artery (C.S. Masson trichrome stain)



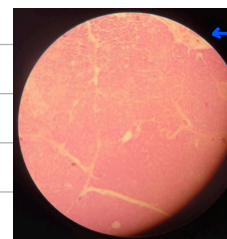
Kidney (H&E) - Fenestrated capillaries



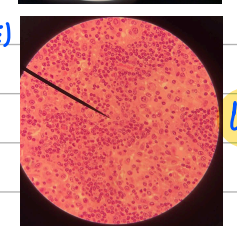
Esophagus (H&E) - Arterioles - Venules - Capillaries



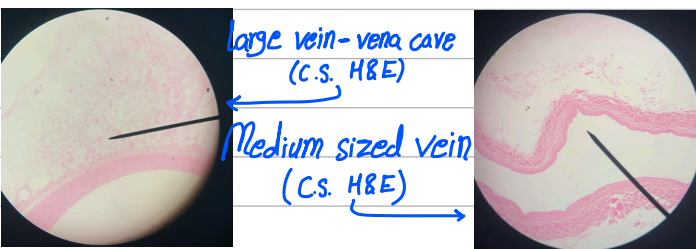
Muscular Artery (C.S. Van Gieson stain)



Pancreas (H&E) - Arterioles - Venules - Capillaries

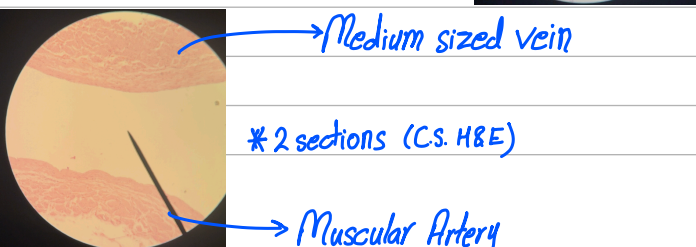


Lymph node



Large vein - vena cava (C.S. H&E)

Medium sized vein (C.S. H&E)



Medium sized vein

* 2 sections (C.S. H&E)

Muscular Artery



Identify !!

Abdullah Raja