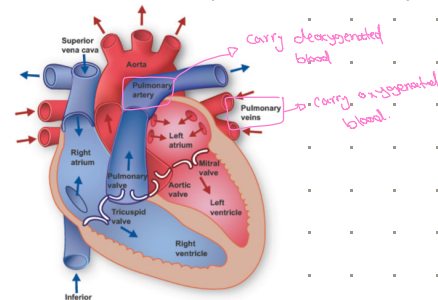


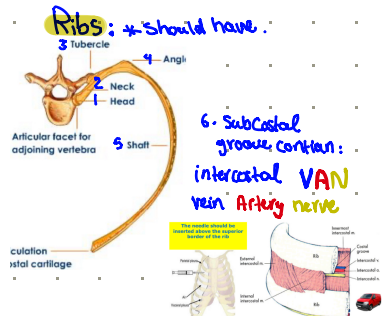
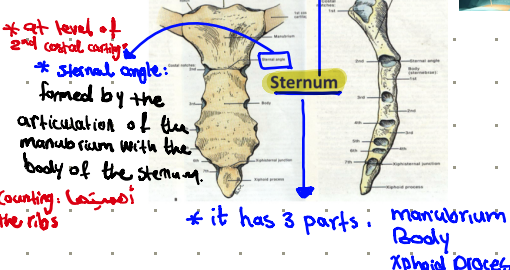
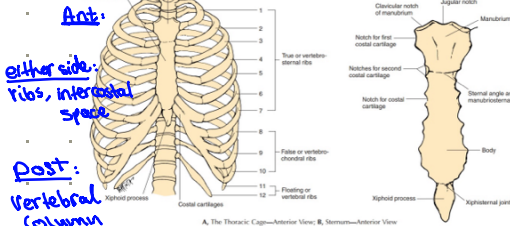
Function: carry oxygen and nutrients, eliminate carbon dioxide and other waste product from the body.



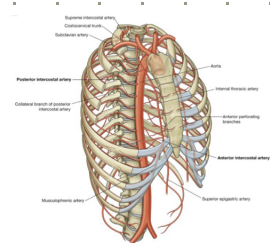
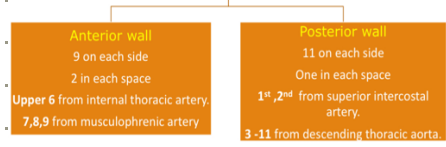
Thoracic wall

Composed of
 ① skeleton (Thoracic cage)
 ② intercostal muscle, vein, nerve.

Sternum
 Ribs
 costal cartilage
 Thoracic vertebrae

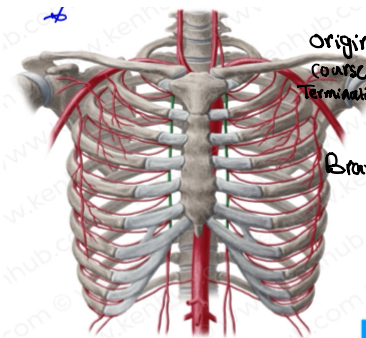


Arterial supply of thoracic wall

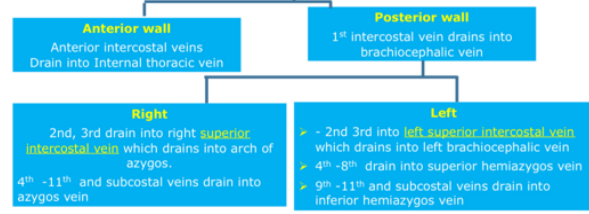


Internal Thoracic (Mammary) A.

Origin: branch 1st part of subclavian artery.
 Course: behind upper 6 costal cartilage + internal space.
 Termination: opposite the 6th intercostal space into superior epigastric A + musculophrenic A.
 Branch: ① pericardial-phrenic, ② // branch, ③ Anti-intercostal to upper six spaces, ④ Perforating branch to skin + muscle + mammary gland.



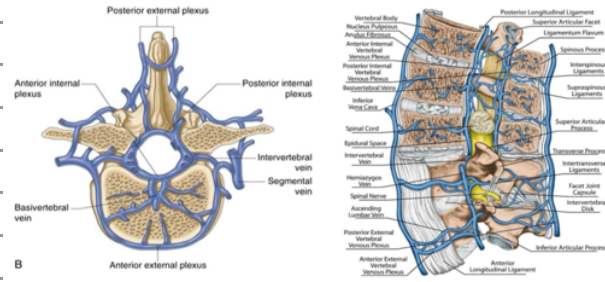
Venous drainage of thoracic wall



The posterior intercostal veins of the 2nd and 3rd (and occasionally 4th) intercostal spaces unite to form a trunk called the superior intercostal vein

Vertebral Venous plexus:

It is the route of early metastasis of carcinoma from the lung, breast, and prostate gland to bones and the central nervous system (CNS).



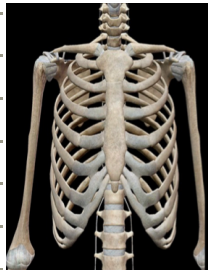
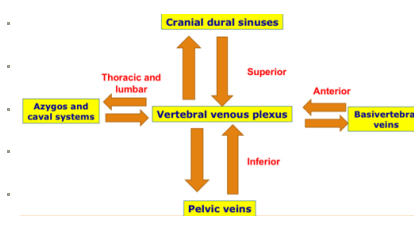
* Valveless plexiform of vein.

Location: epidural space b/w the wall of the vertebral canal and the dura mater.

Tributaries from

- ✓ Spinal cord
- ✓ Vertebrae
- ✓ Vertebral veins
- ✓ Basilar plexus
- ✓ Occipital and sigmoid dural sinuses

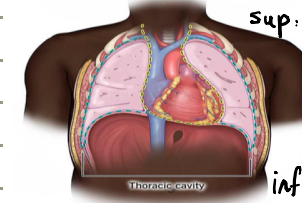
Communication:



Thoracic cavity:

* It bounded by thoracic cage, diaphragm.
 * extends upward into root of neck.
 * contain two pleural cavities containing lungs and mediastinum.

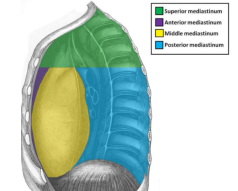
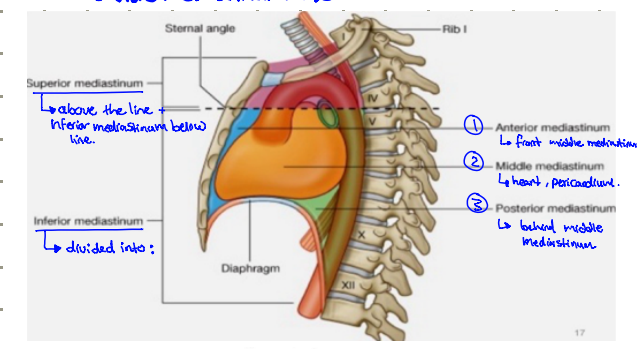
Mediastinum: btw the two pleural cavities.

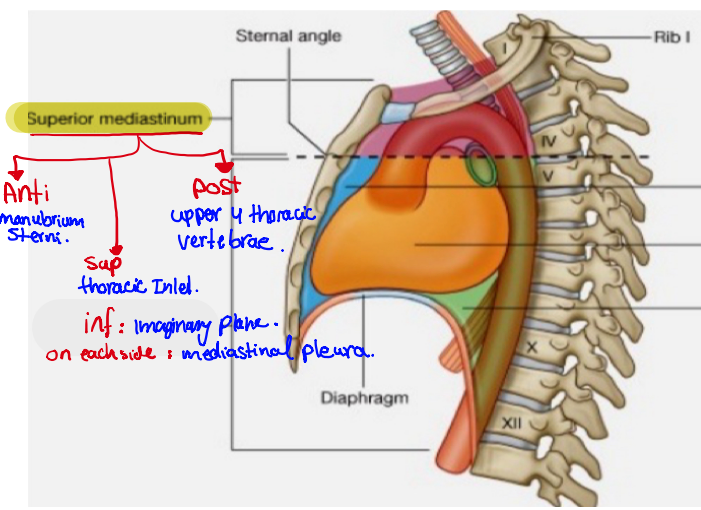


sup: Thoracic Inlet
 Ant: Sternum
 post: vertebral column
 inf: Diaphragm

Subdivisions: imaginary line from sternal angle to lower 4th thoracic vertebra.

↳ divide mediastinum into

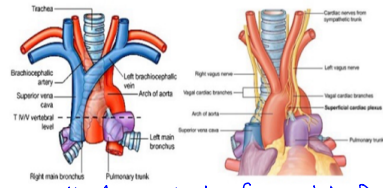




Contents of superior Mediastinum

- 1- Arch of Aorta and its branches
- 2- Brachiocephalic veins and superior vena cava
- 3- Thoracic duct
- 4- Thymus
- 5- Phrenic and vagus nerves
- 6- Trachea
- 7- Oesophagus

Superior Mediastinum - contents



Q from Dr. i arrange the living structures from post to Anti

Ans: esophagus → trachea, Artery, vein

ANATOMY 2