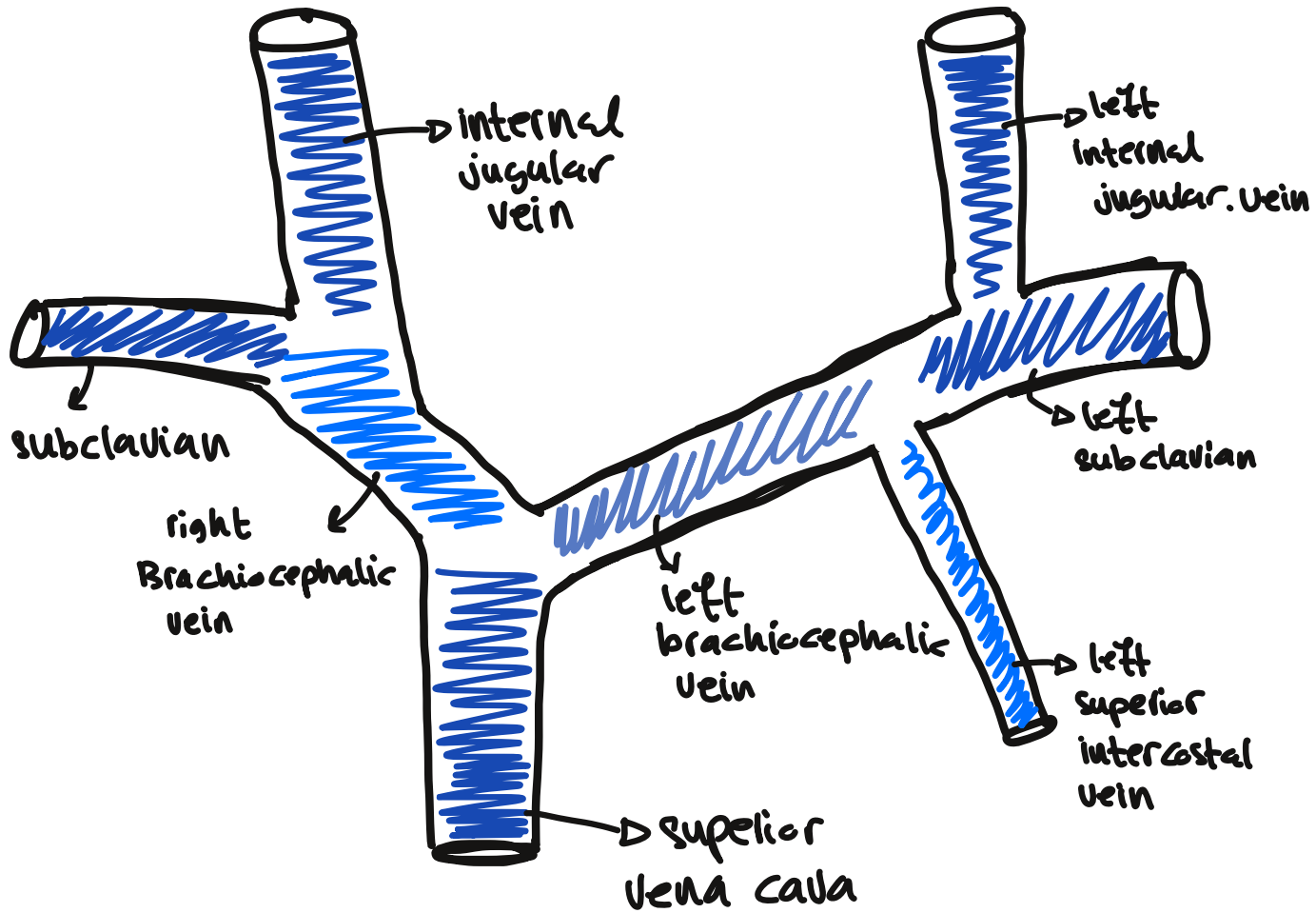


Development of Veins 2-

right

anatomy!

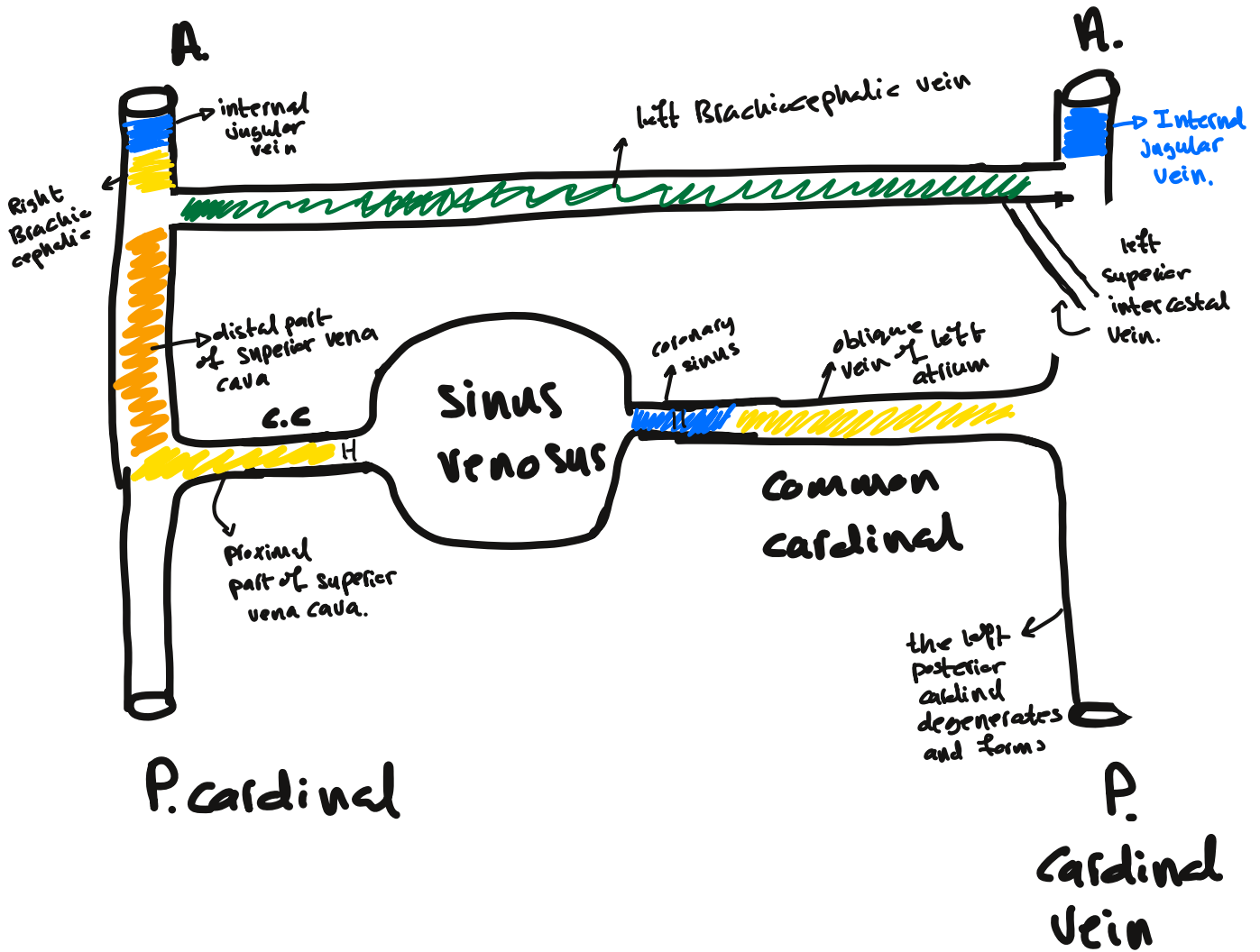
left



Embryology :

right

left



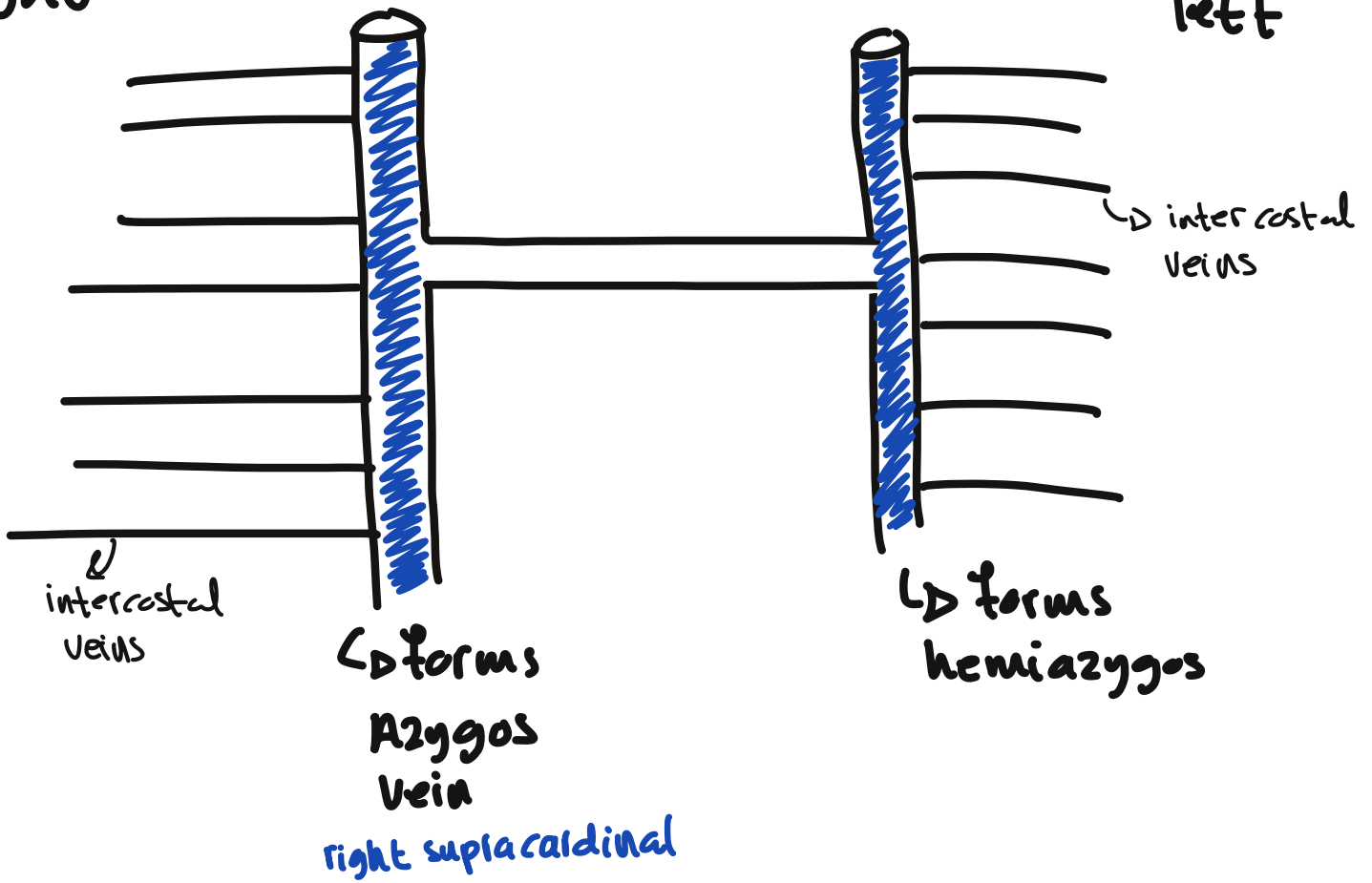
- these cardinal veins are found in the cervical and the beginning of the thoracic regions! after the anterior cardinal vein we have three sets of veins:

1. Supracardinal (thorax)
2. Subcardinal (abdomen)
3. Sacrocardinal (pelvic)

1. supra cardinal veins in the thorax:

right

left



2. the subcardinal vein in the abdomen :-

right

interior Vena
cava.

left

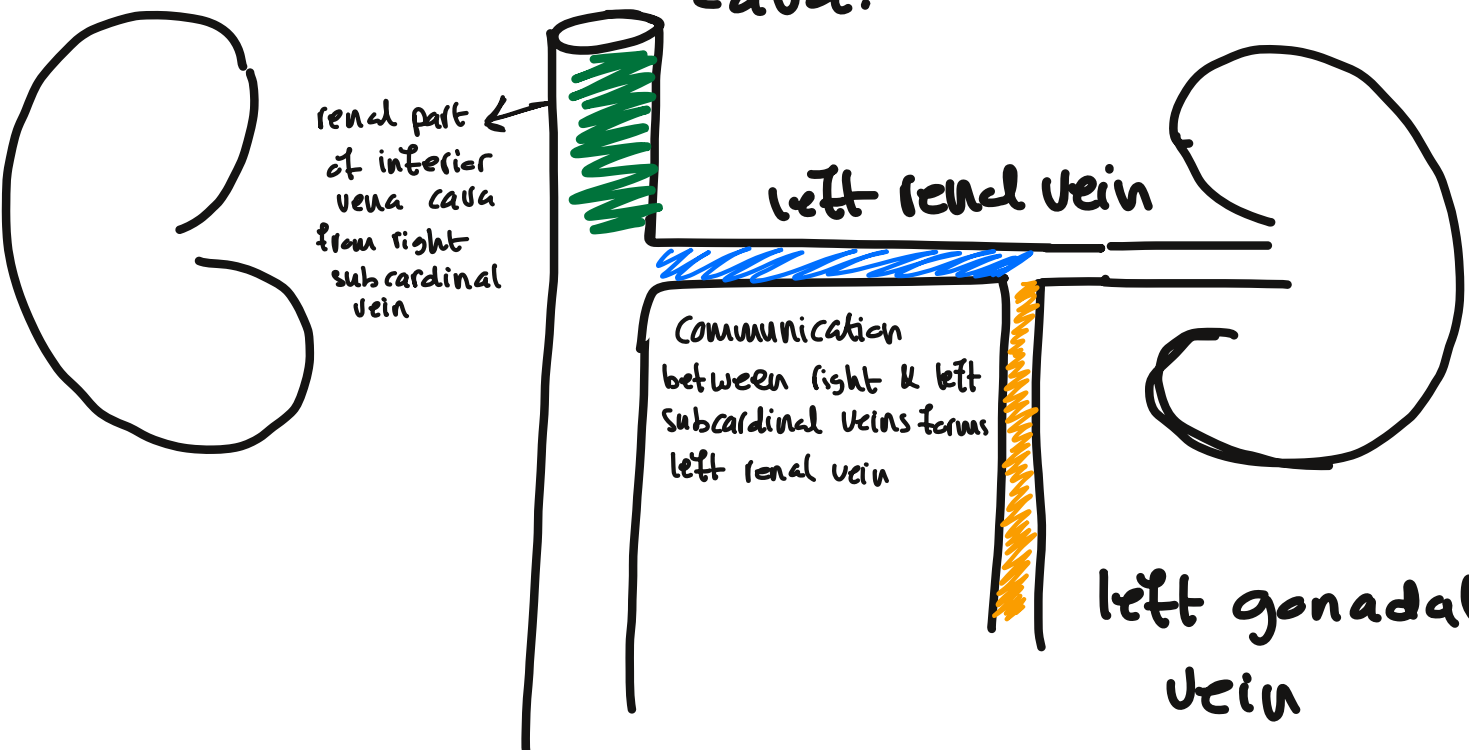
renal part
of interior
vena cava
from right
subcardinal
vein

left renal vein

Communication
between right & left
subcardinal veins forms
left renal vein

left gonadal
vein

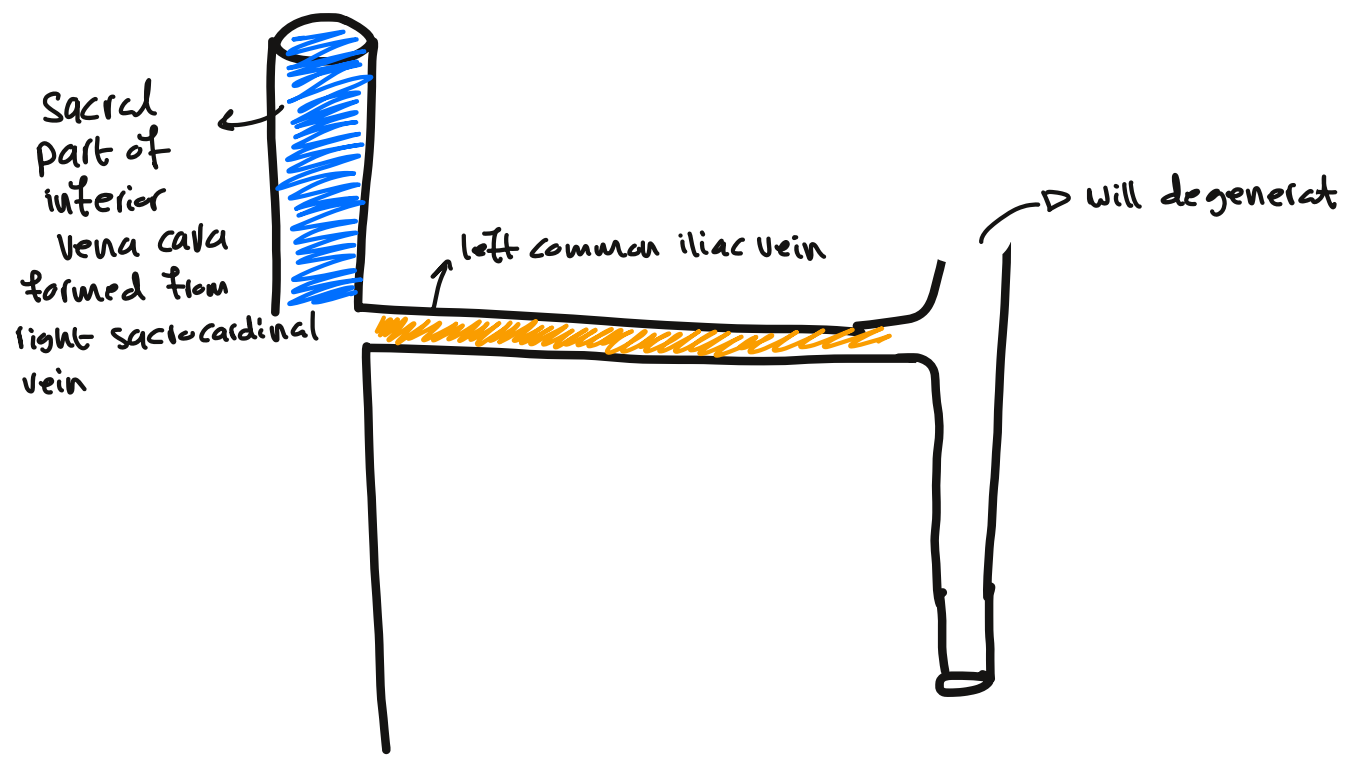
↳ the left subcardinal
vein lower part
gives gonadal
vein!



3. Sacrocardinal vein the pelvis:

right

left

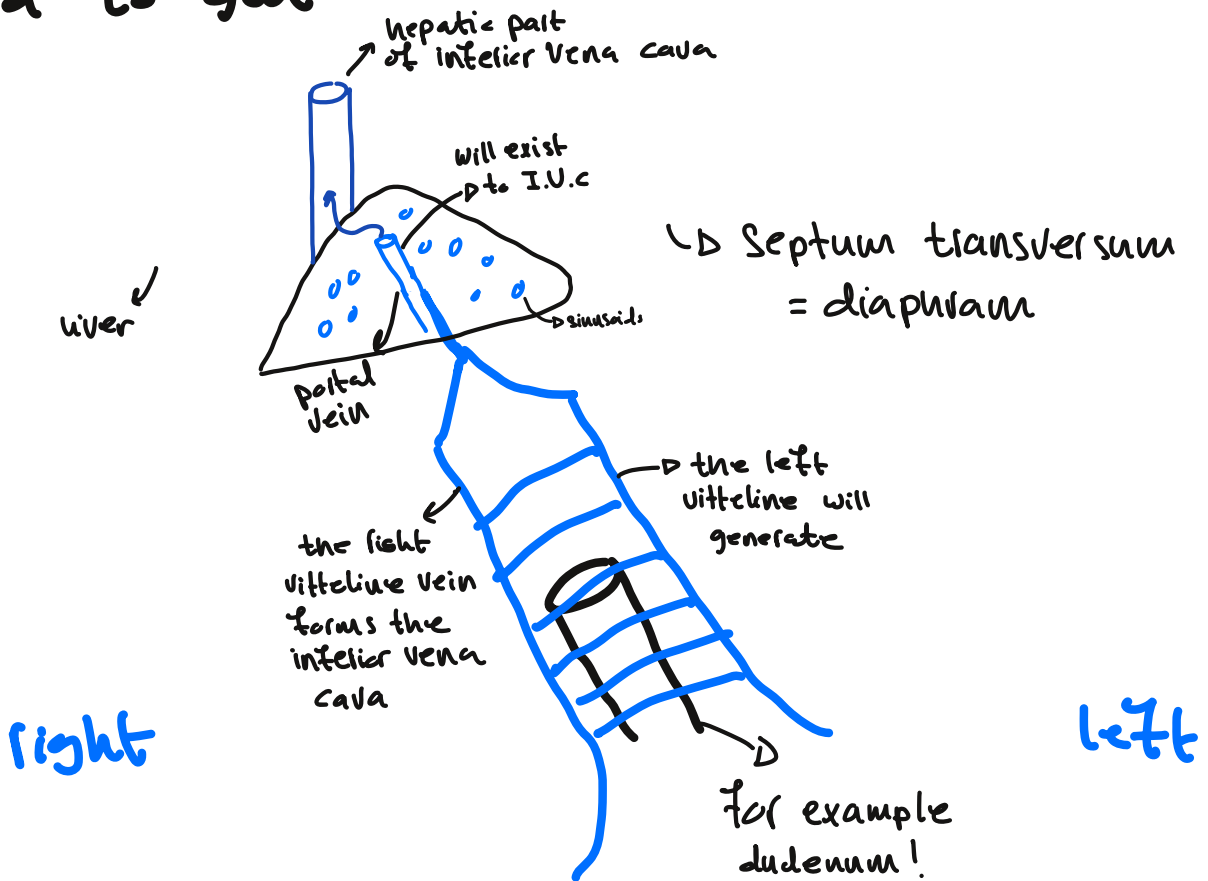


- the sinus venosus has three veins:

1. Vitelline vein
2. Umbilical vein
3. cardinal vein ✓

1. Vitelline:

related to gut:



- until now the inferior vena cava has three parts:

1. renal part → right subcardinal vein
2. hepatic part → right vitelline vein
3. sacral part → right sacrocardinal vein

3. Umbilical vein

