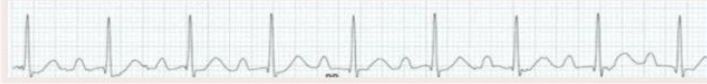


3

* A



First degree heart block

4

* B



Second degree type 2

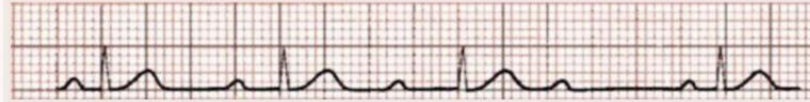
5

* C



5

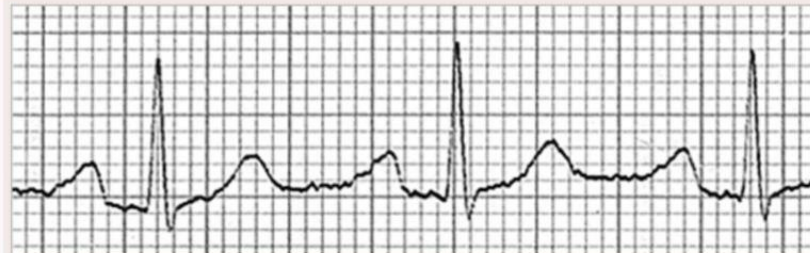
* C



Second degree type 1

6

* D



Normal

7

* E



Regular sinus rhythm

8

* F



Third degree block

8

* F



Third degree block

9

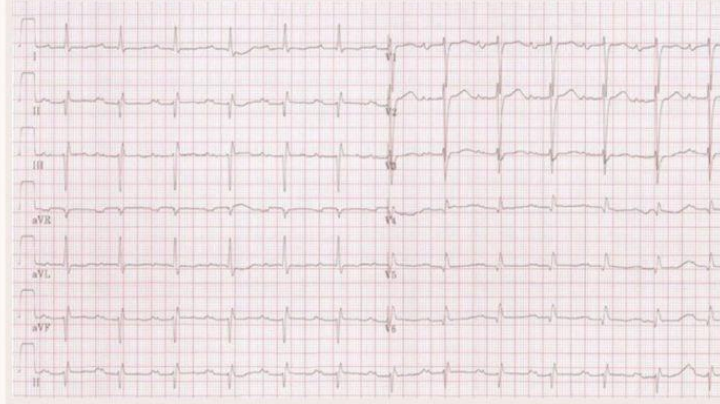
* G



Second degree type 2

10

* H



Left atrial enlargement

11

* |



Second degree type 1

12

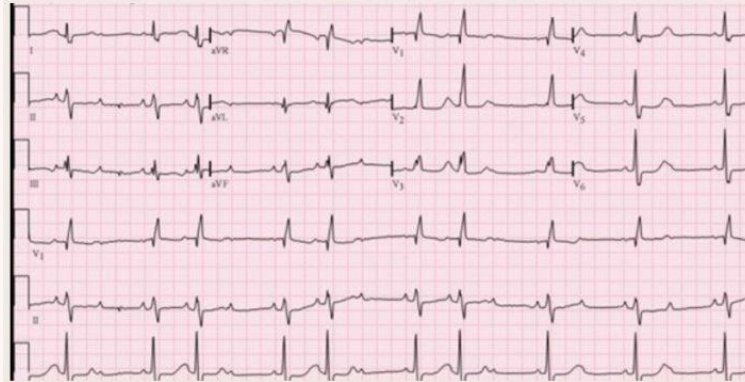
* J



First degree heart block

13

* K



Second degree type 2

14

* L



Second degree type 1

15

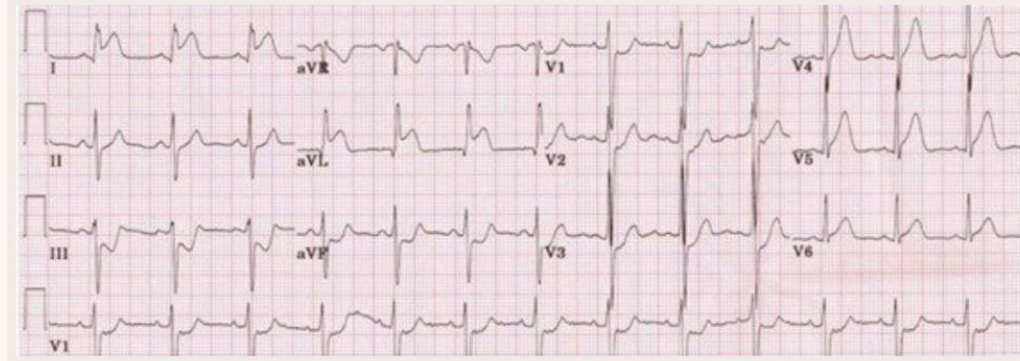
* M



Third degree heart block

16

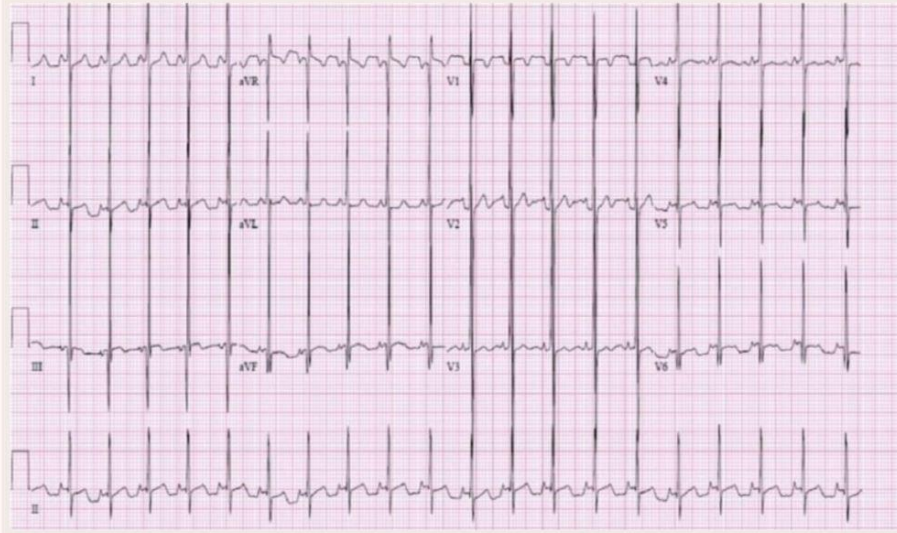
* N



Lateral MI

17

* 0



High voltage QRS complex

18

* P



Left bundle branch block

19

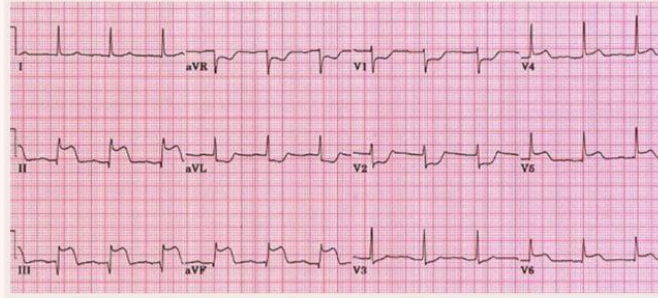
* Q1



Right bundle branch block

20

* R



Inferior wall MI

21

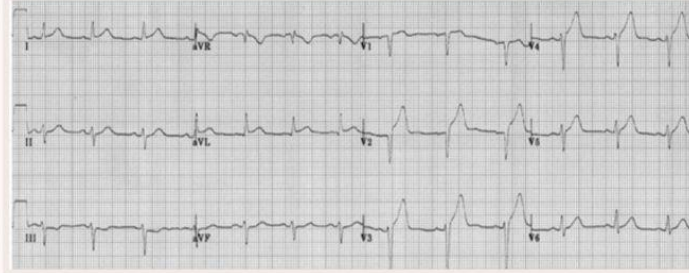
* S



Low voltage ECG

22

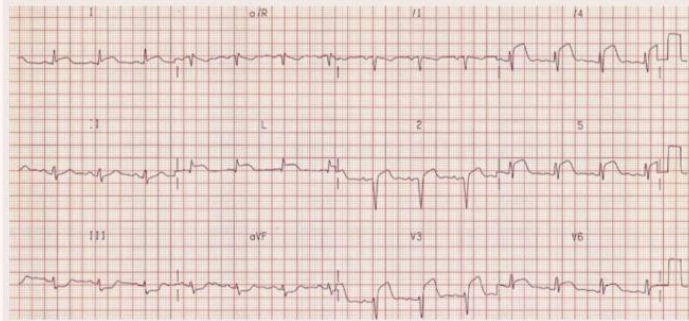
* T



Anterolateral MI

23

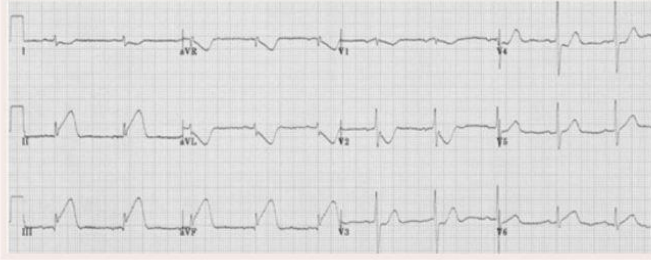
* U



Anterolateral MI

24

* V



Inferior MI

25

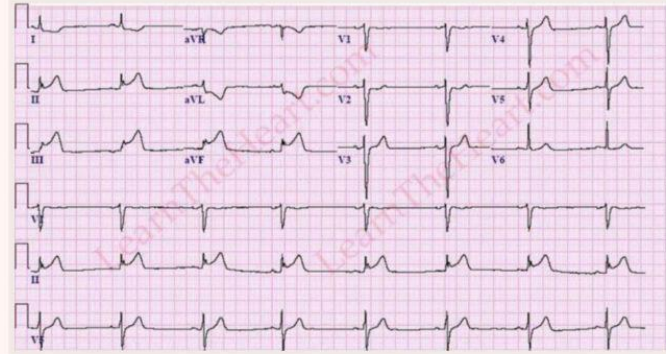
* W



ST depression

26

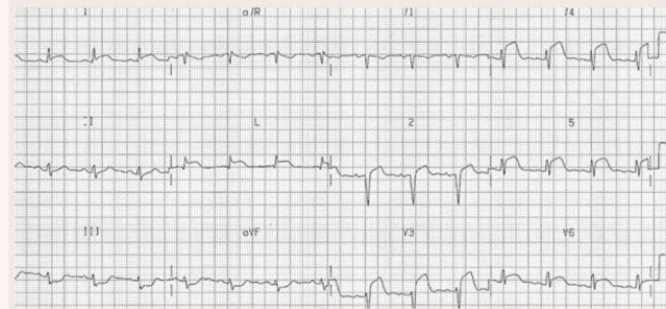
* X



Inferior MI

27

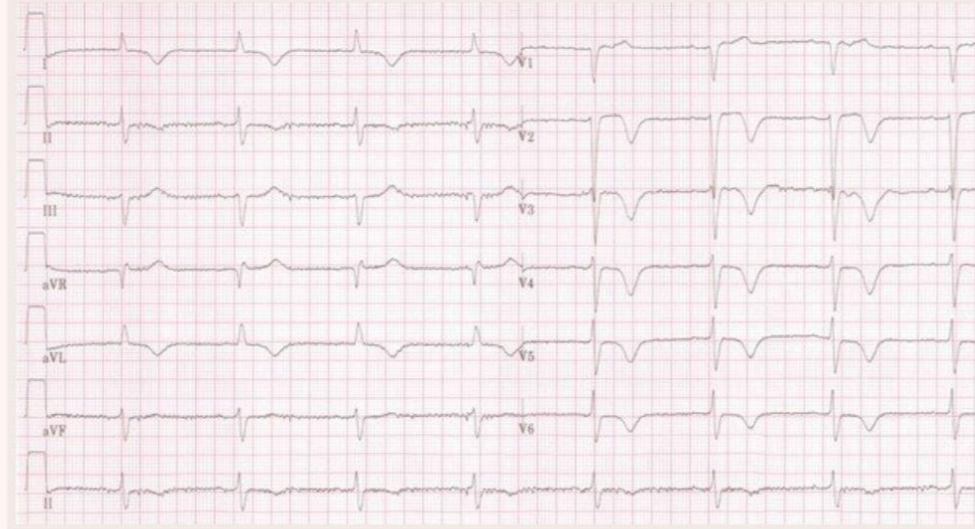
* Y



Anteriolateral MI

28

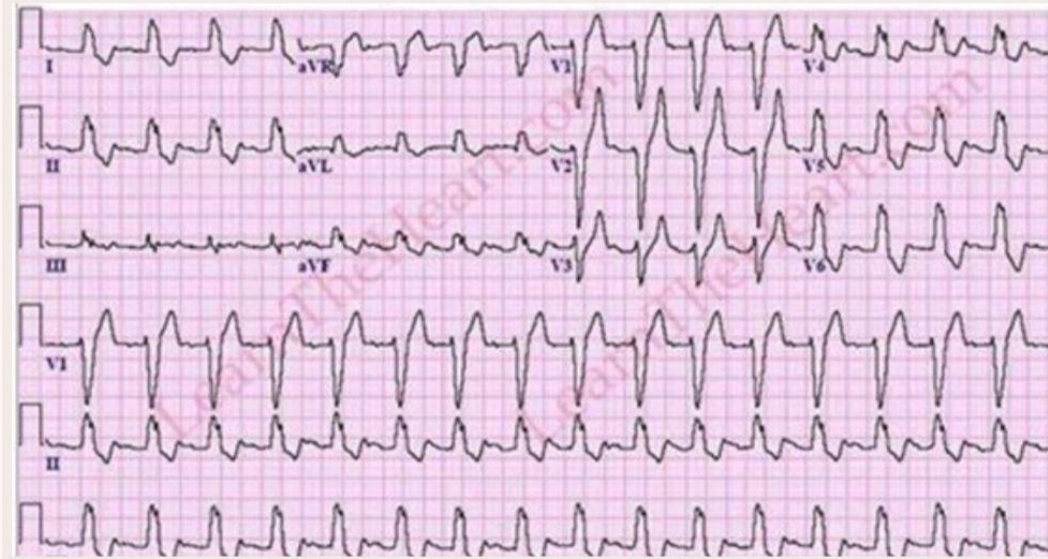
* Z



| Post MI

29

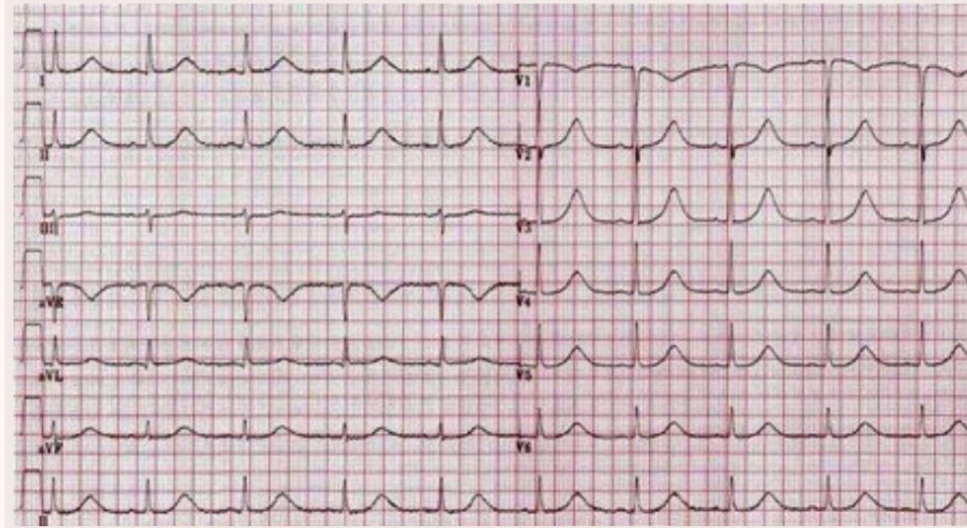
* II



Left bundle block

30

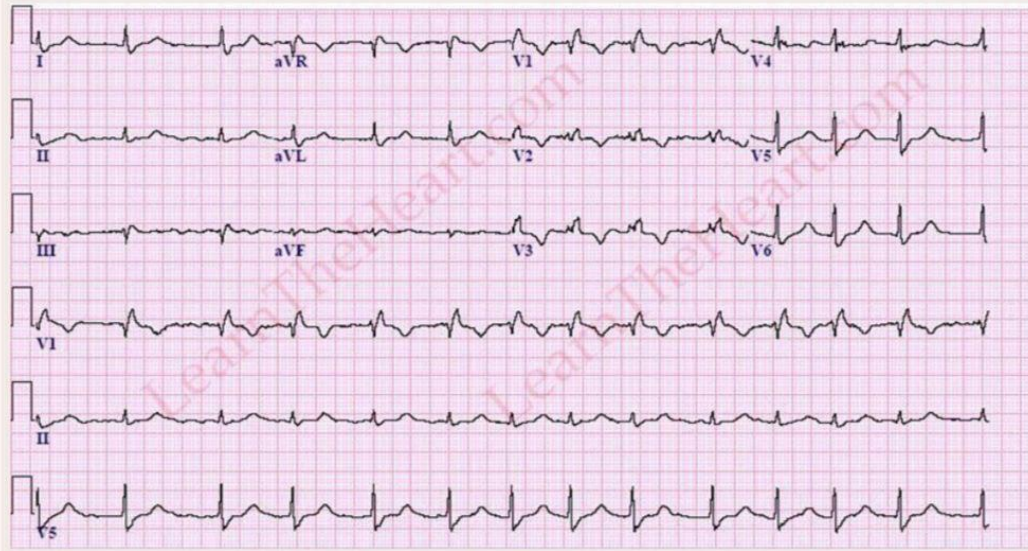
* III



QT prolongation

31

* Q2



Right bundle branch block

Please review these ECG strips and answer the following questions:

- *The ECGs that show AV block type 1 are:
- *The ECGs that show Mobitz type 1 are:
- *The ECGs that show Mobitz type 2 are:
- *The ECGs that show complete AV block are:
- *The ECGs that show high voltage QRS are:
- *The ECGs that show low voltage QRS are:
- *The ECGs that show abnormal P wave are:
- *The ECGs that show LBBB are:
- *The ECGs that show RBBB are:
- *The ECGs that show STEMI are:
- *The ECGs that show ST depression are:
- *The ECGs that show prolonged QT interval are:
- *The ECGs that show abnormal T wave are: