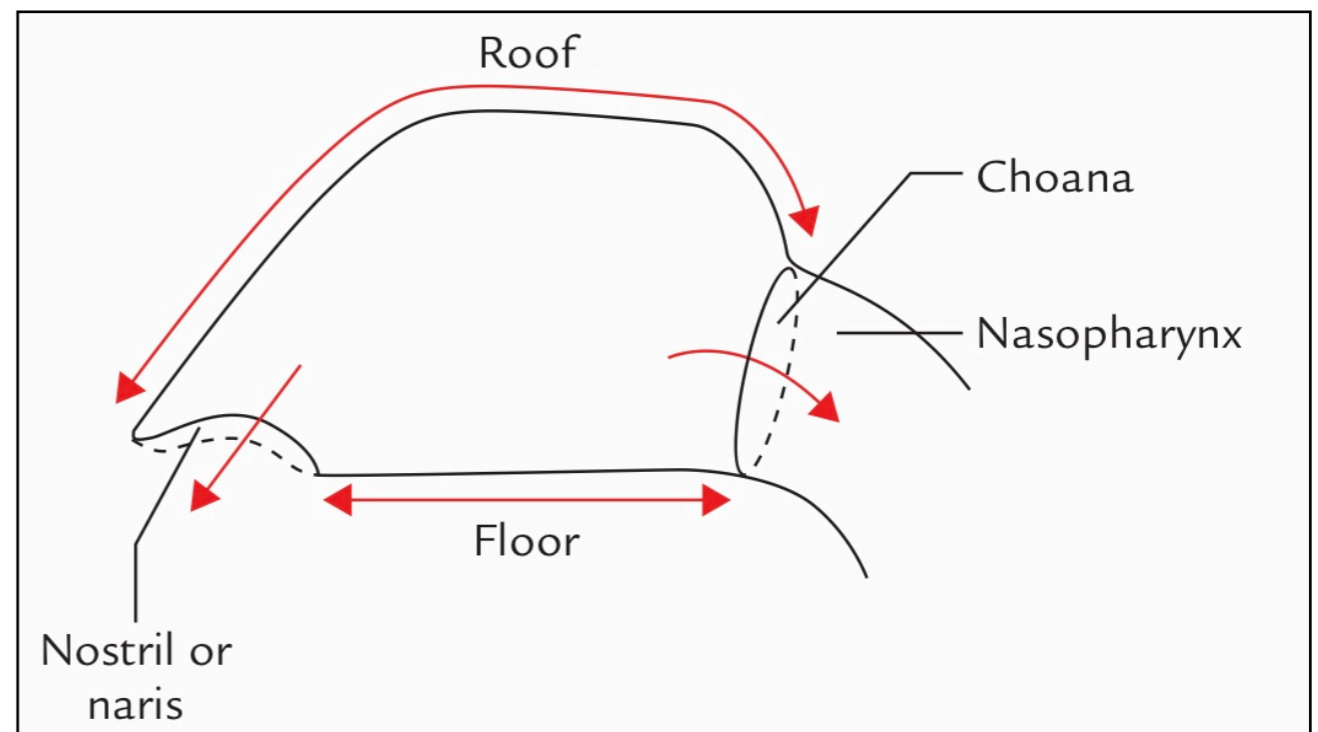
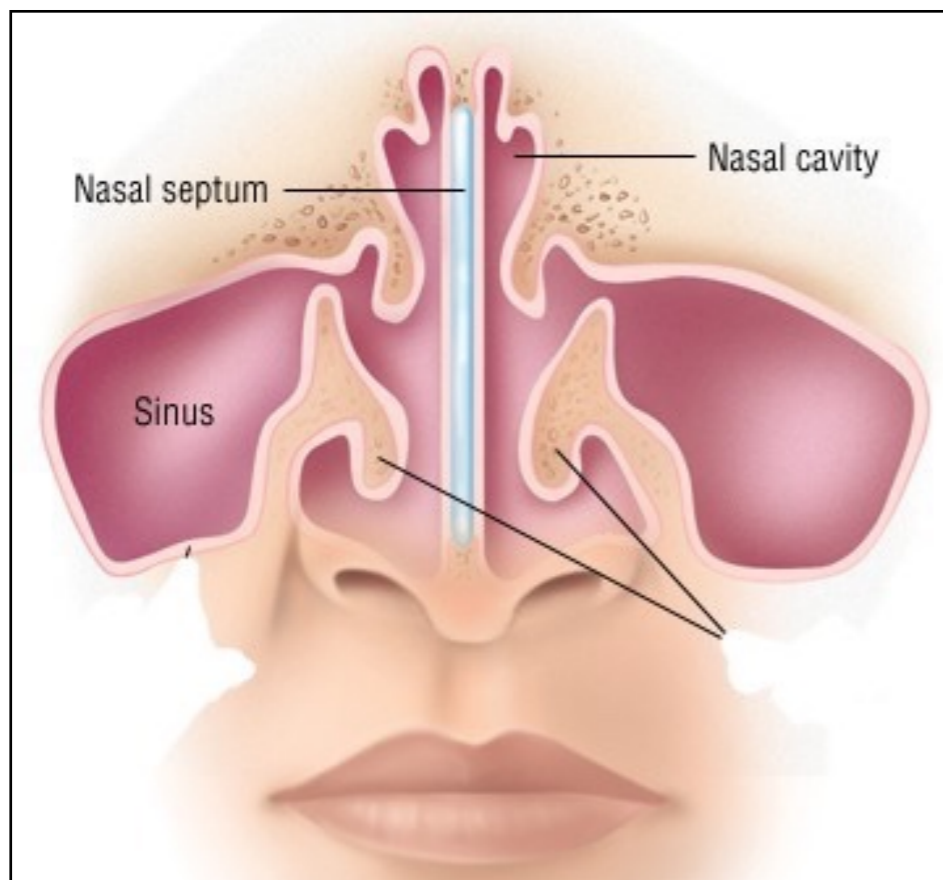


# Lab / First Week

- 1. Nasal Cavity**
- 2. Paranasal Sinuses**
- 3. Pterygopalatine Fossa**

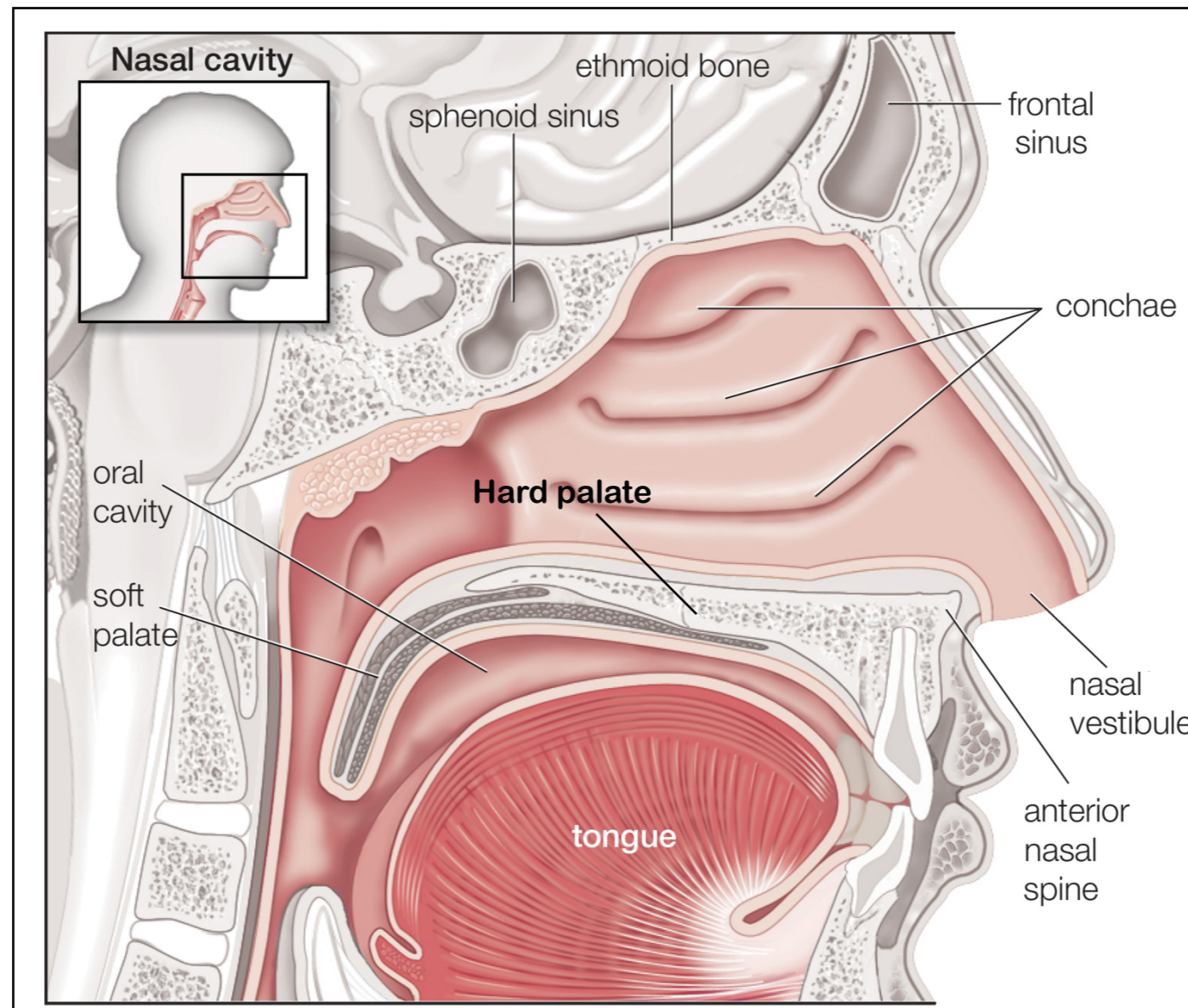
# ✦ Nasal Cavity.

- The students should know the boundaries of the cavity :
  1. Floor.
  2. Roof
  3. Lateral wall
  4. Medial or septal wall.



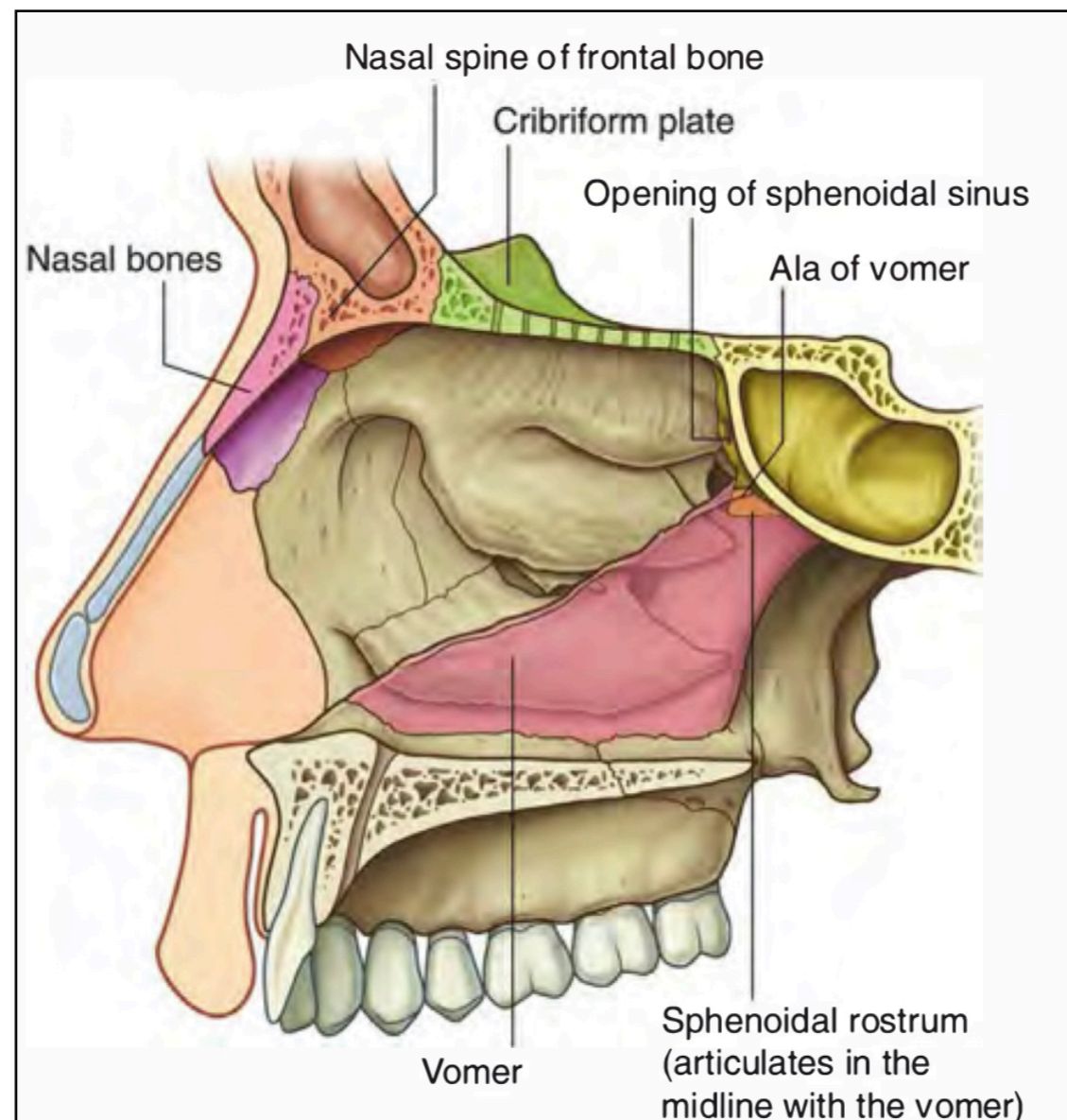
# • Floor

- The students should observe the upper surface of the hard palate which consist of :
  1. Palatine process of the maxilla
  2. Horizontal plate of the palatine bone



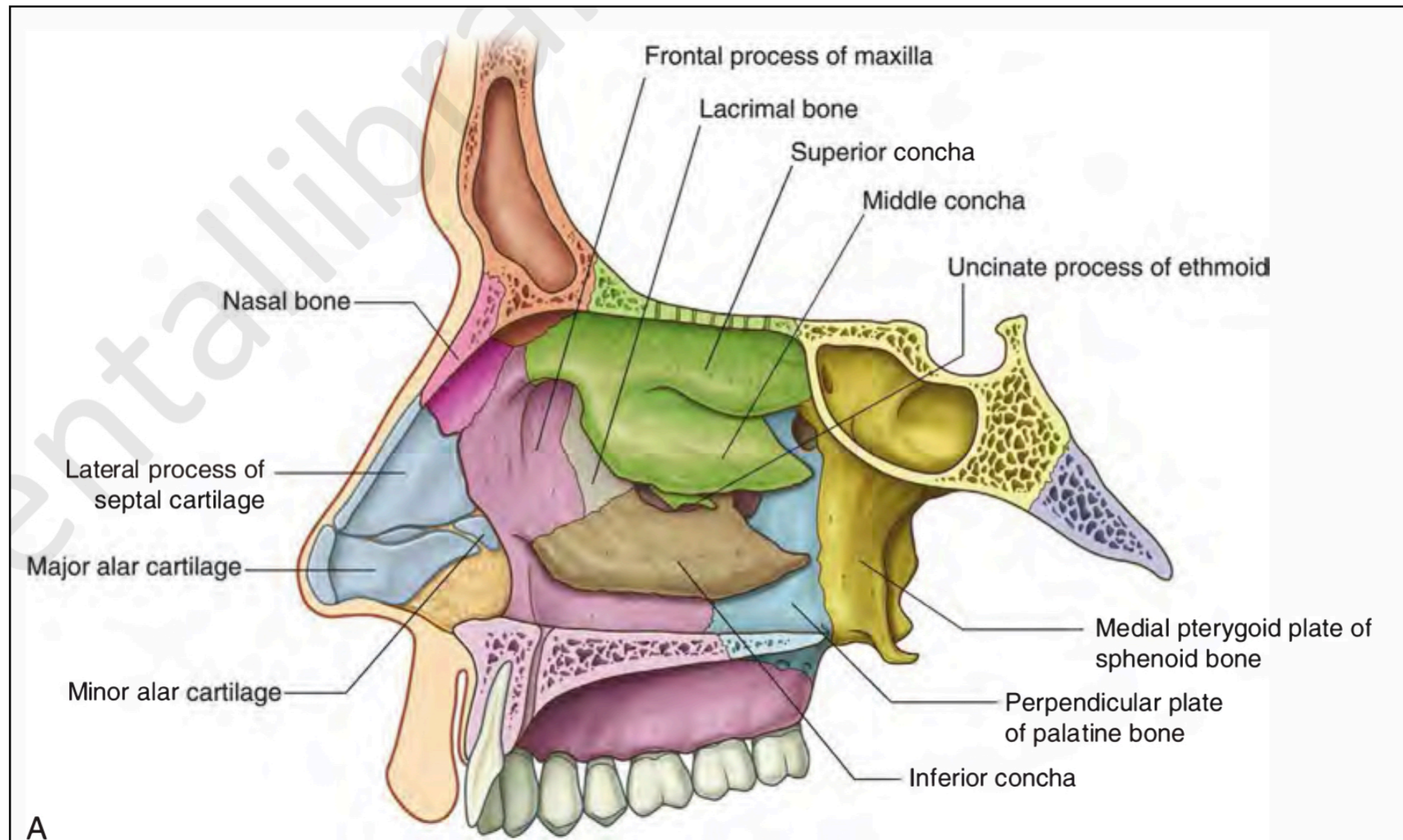
# • Roof

- The students should know the consistent of each part of the roof:
  1. Sloping anterior part.
  2. Horizontal middle part.
  3. Sloping posterior part.



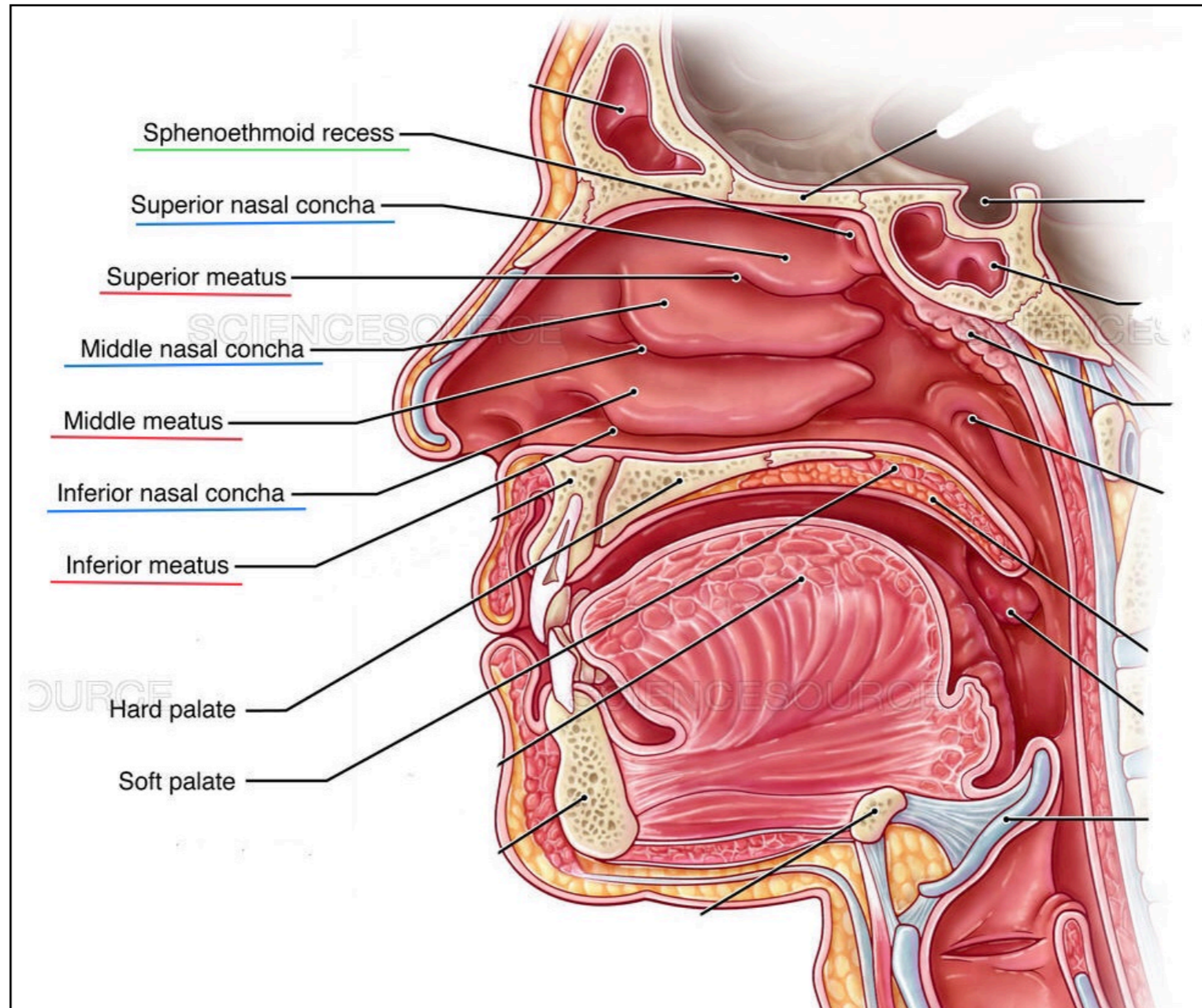
# • Lateral Wall

- The students should observe the supporting bone of the lateral wall:



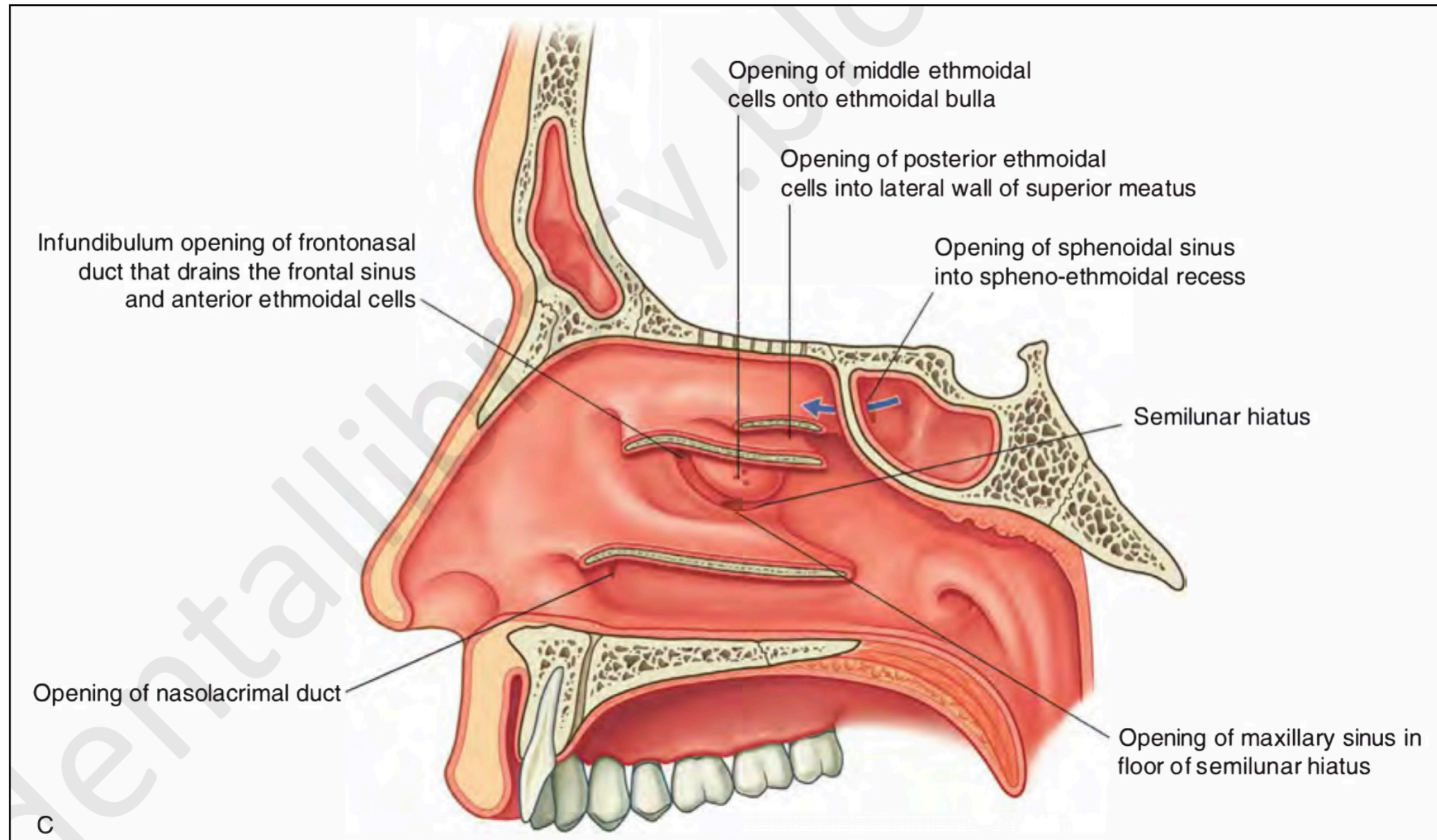
# • Lateral Wall

- The students should observe the three concha, three meatuses and one recess in the lateral wall:



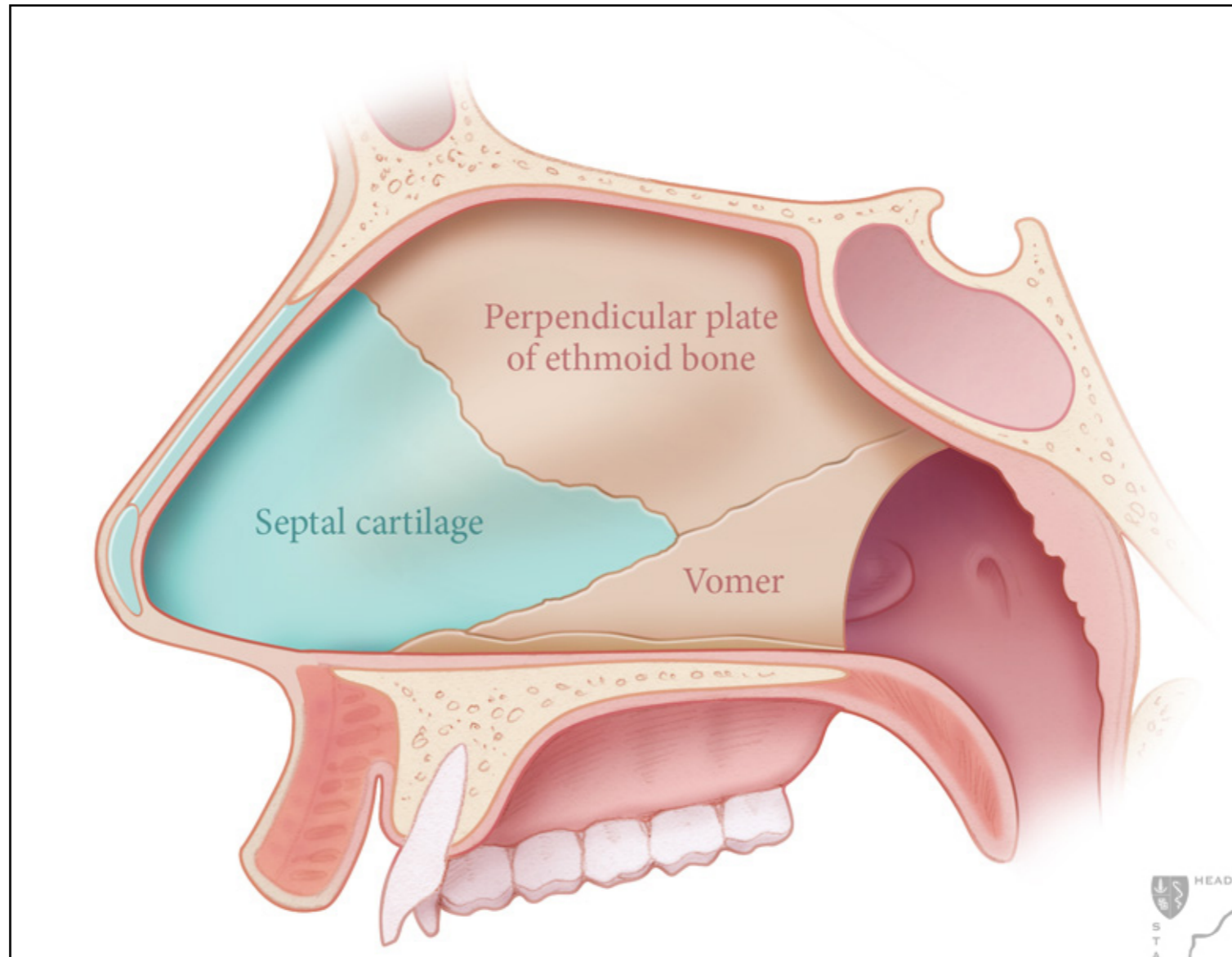
# • Lateral Wall

- The students should know the openings into the lateral wall:



# • Medial Wall

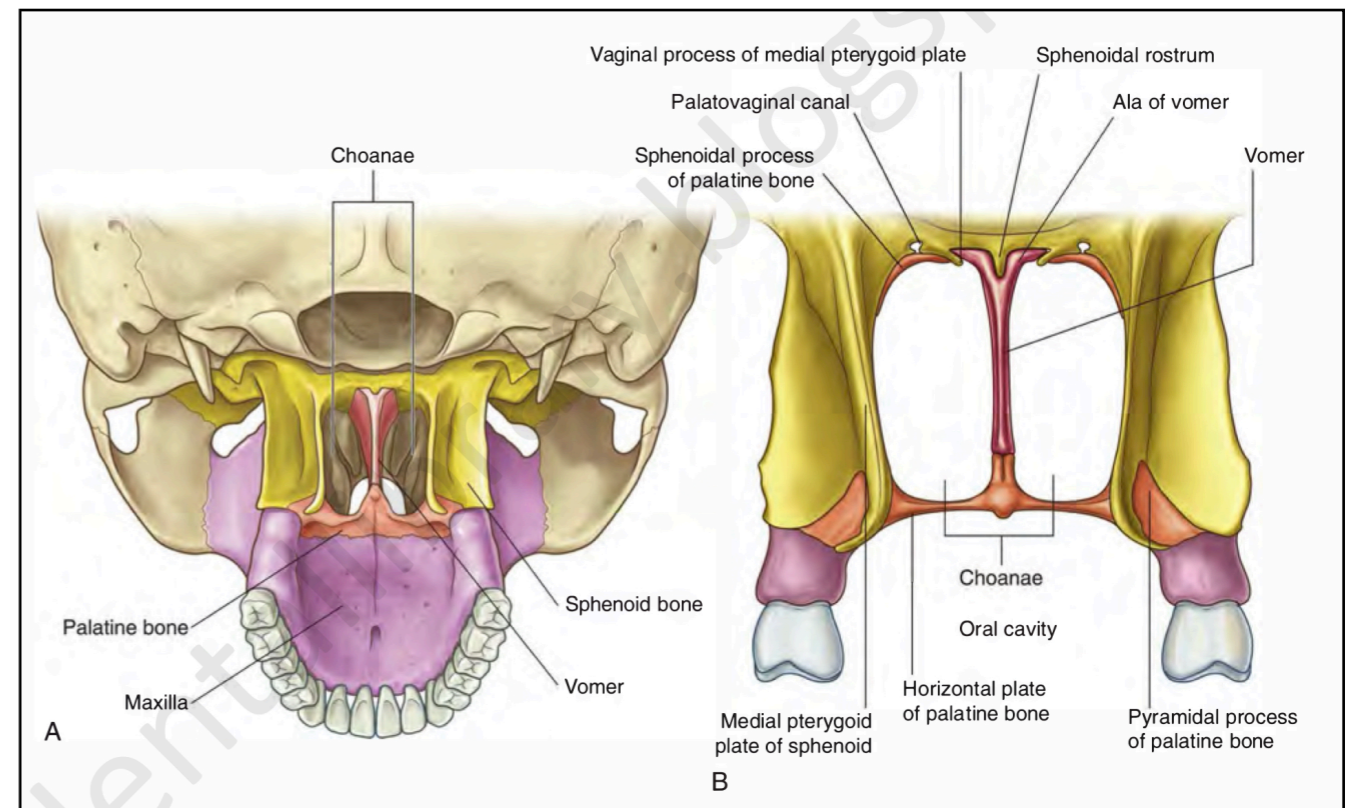
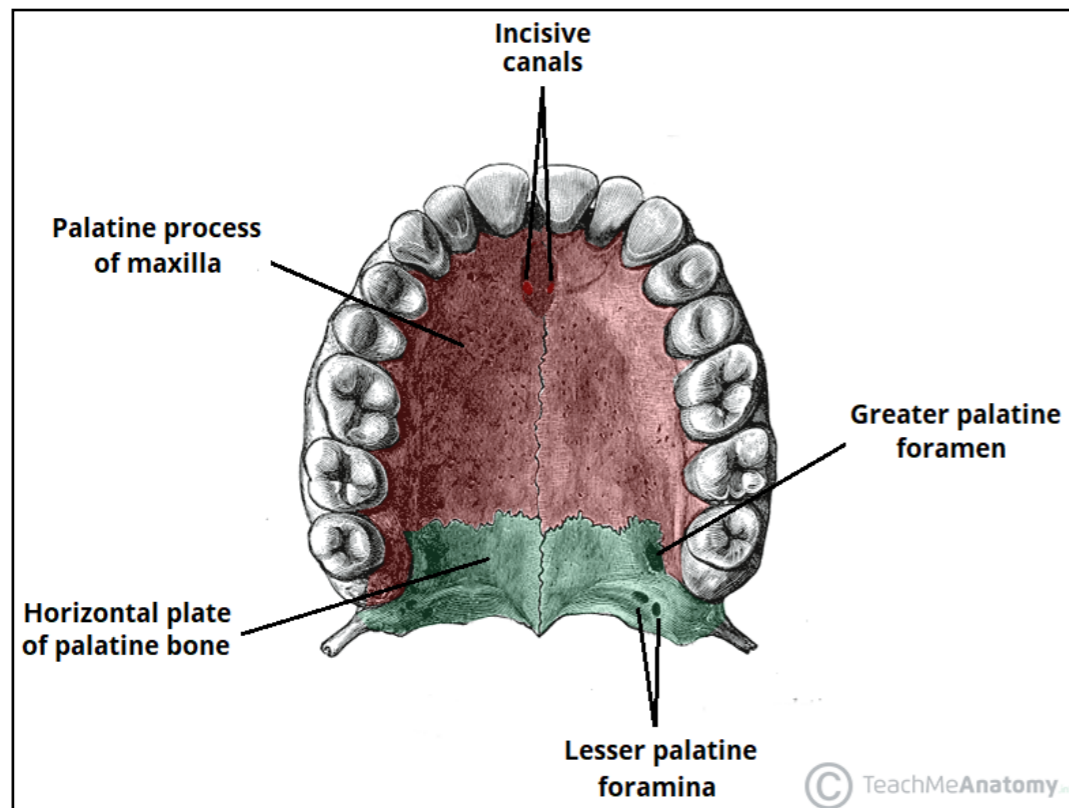
- The students should know the consistent of the medial wall (the septum):
  1. Anterior part.
  2. Posterior part.





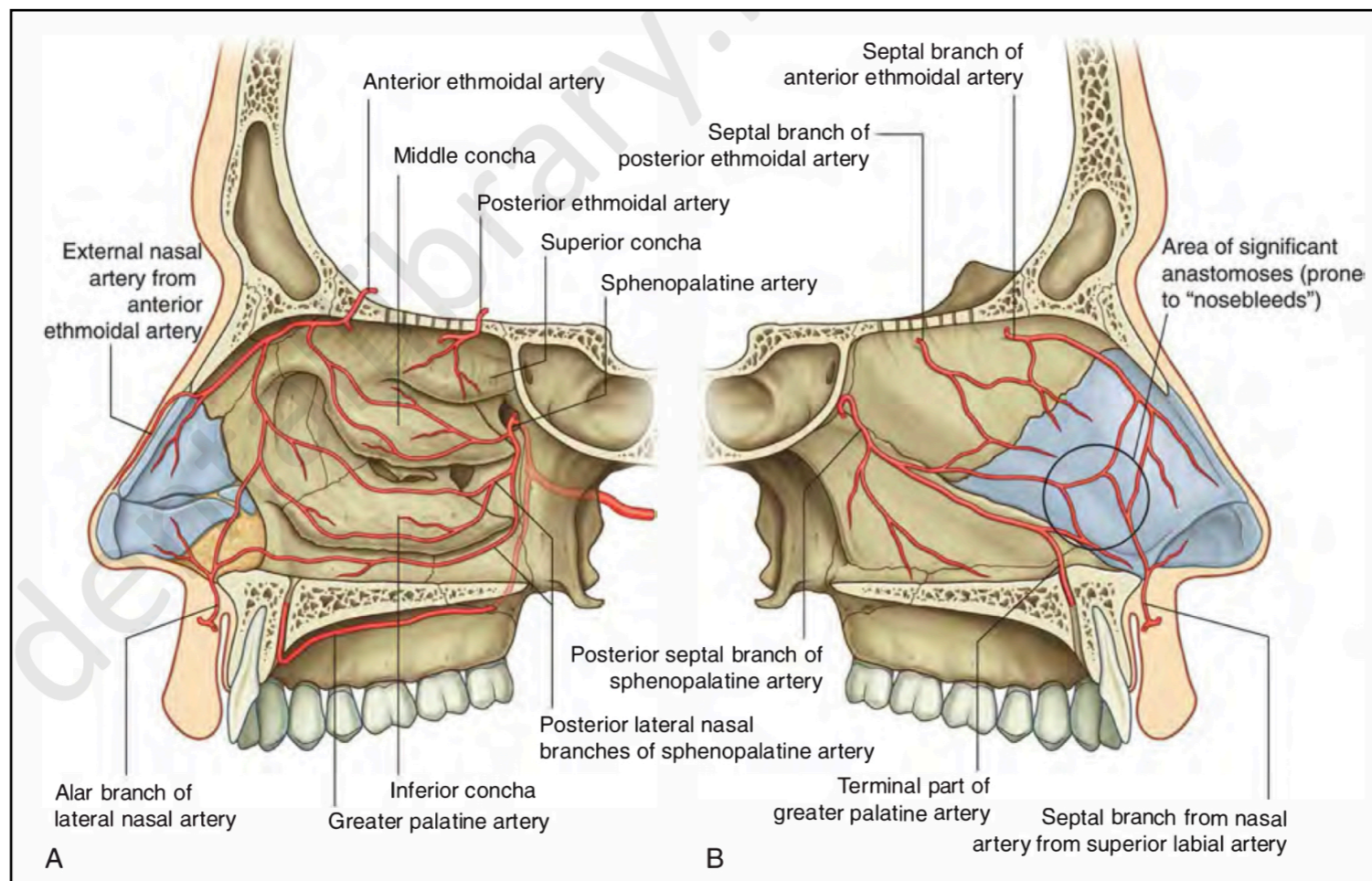
# • Choana

- The students should know the foramina of the hard palate:
- The students should observe the boundaries of the choana:



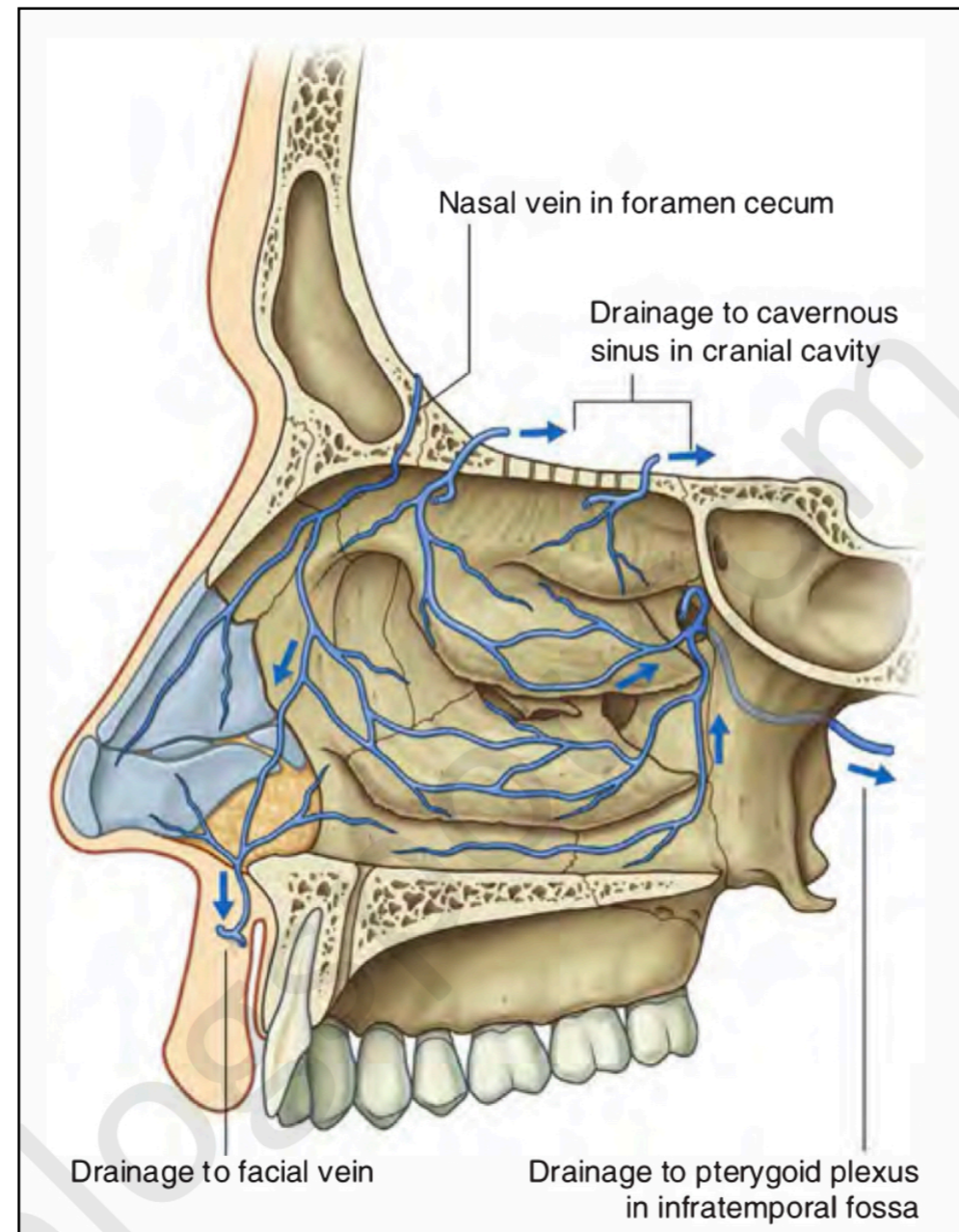
# • Blood and nerve supply

- The students should know the arterial supply of septum and lateral wall:
  1. Posterior lateral nasal branches.
  2. Posterior septal branches.
  3. Greater palatine artery.
  4. Anterior and posterior ethmoidal arteries.
  5. Superior labial artery.
  6. Lateral nasal artery.
- What is the main artery which causes epistaxis :



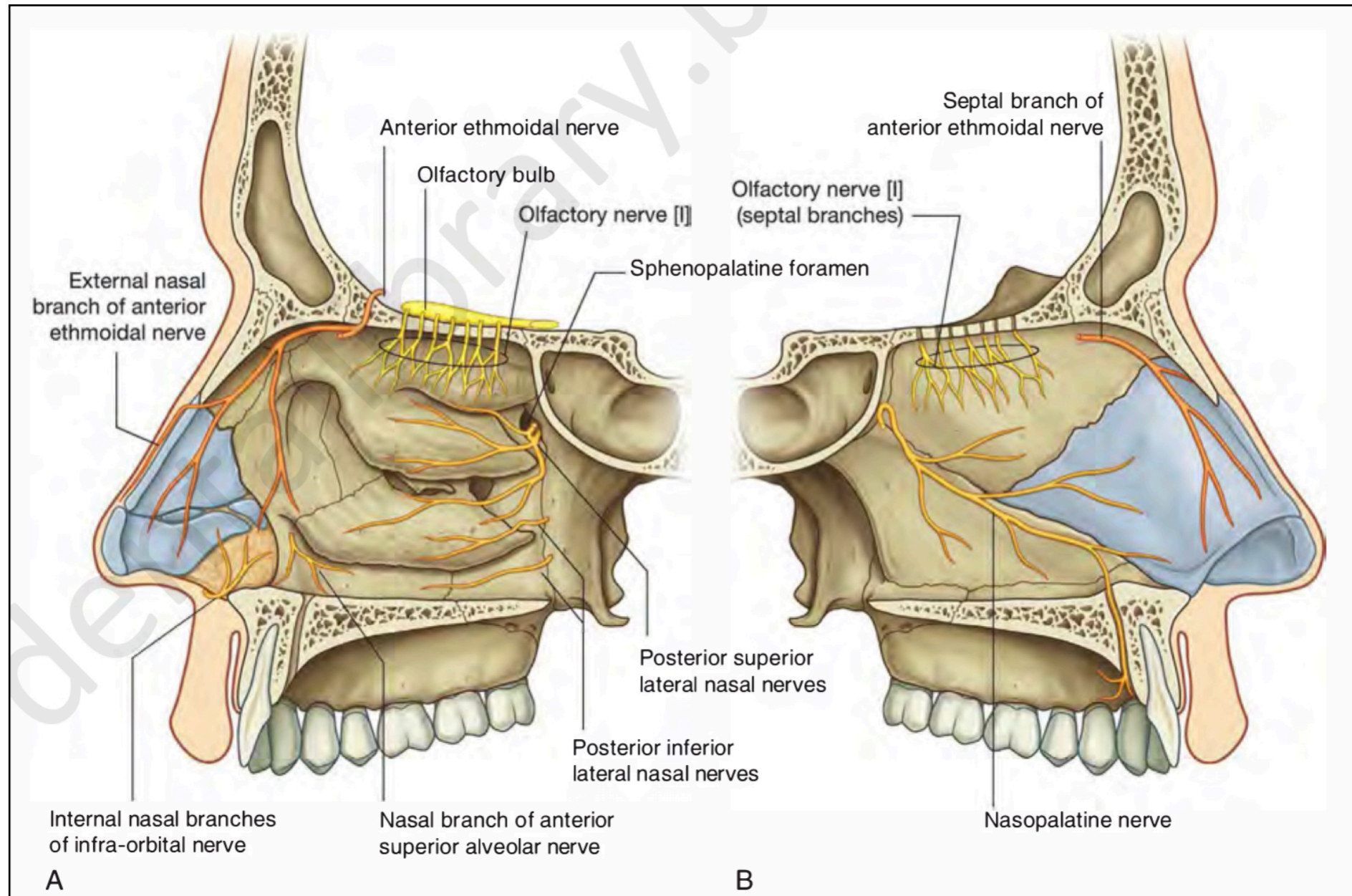
# • Blood and nerve supply

- The students should know the venous drainage:



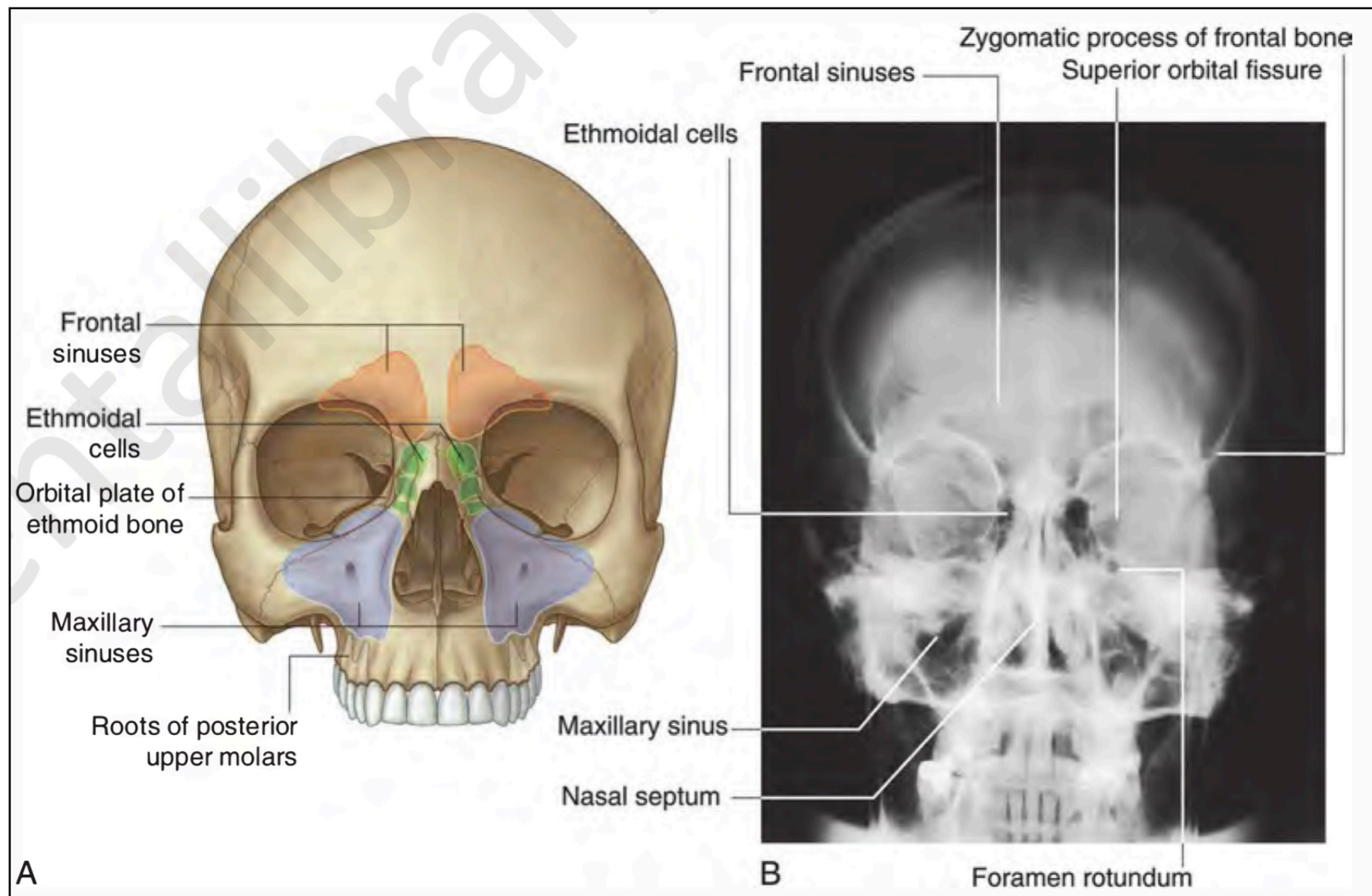
# • Blood and nerve supply

- The students should know the nerve supply of septum and lateral wall:



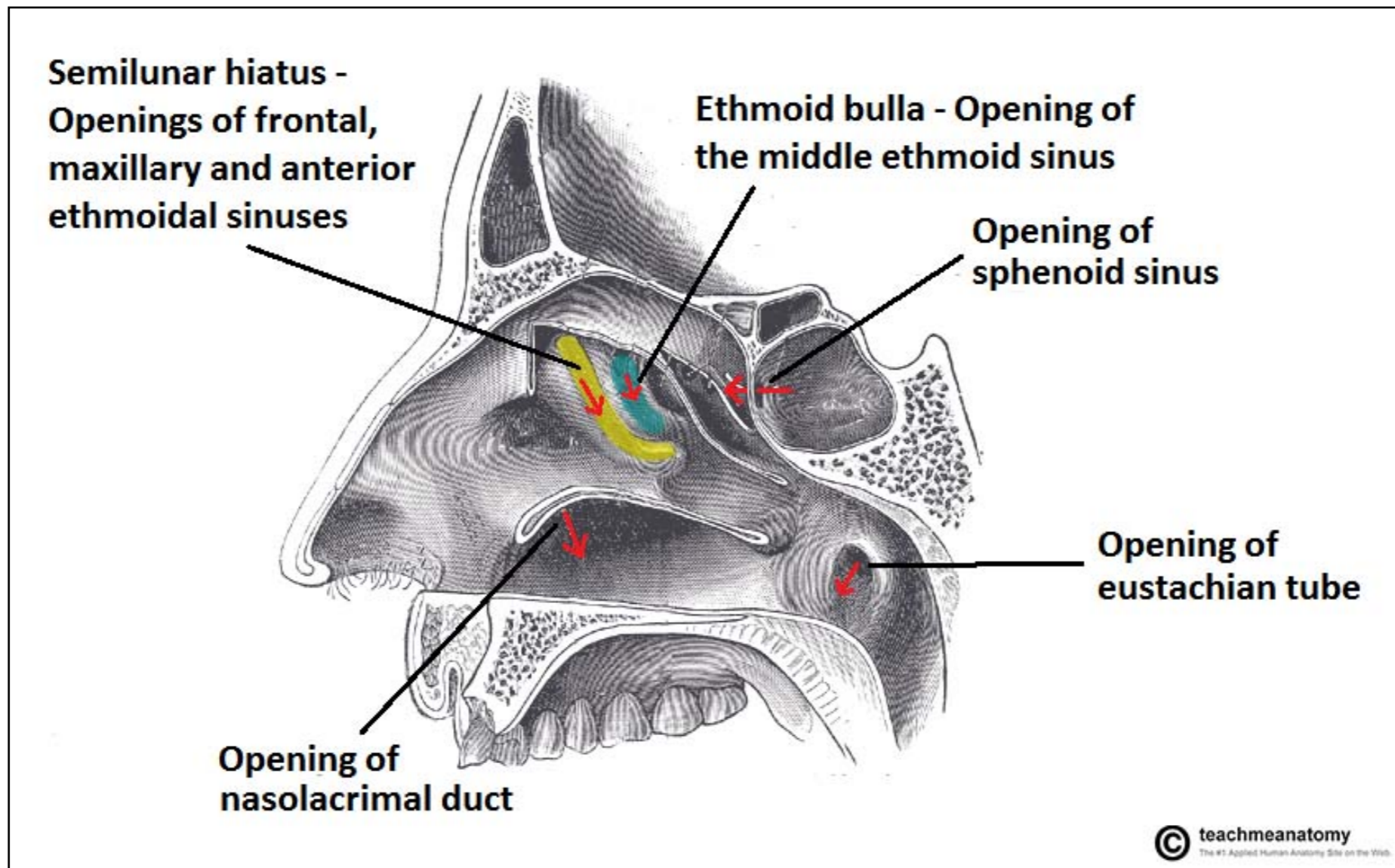
# ✦ Paranasal Sinuses.

- The students should know the sites of the each sinus :
  1. Ethmoidal cells.
  2. Sphenoidal.
  3. Maxillary.
  4. Frontal sinuses.



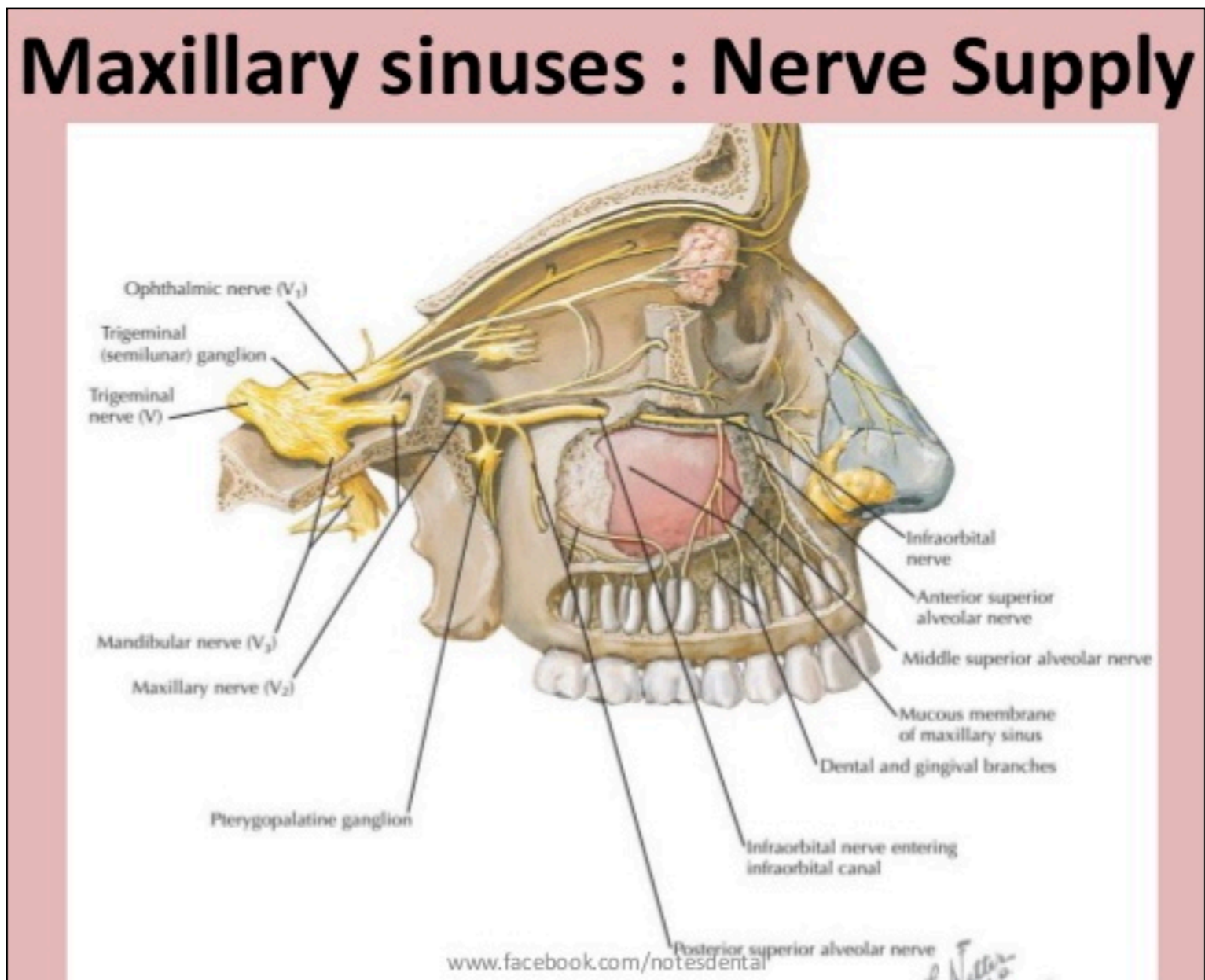
# ✦ Paranasal Sinuses.

- The students should know the site of drainage for each sinus:



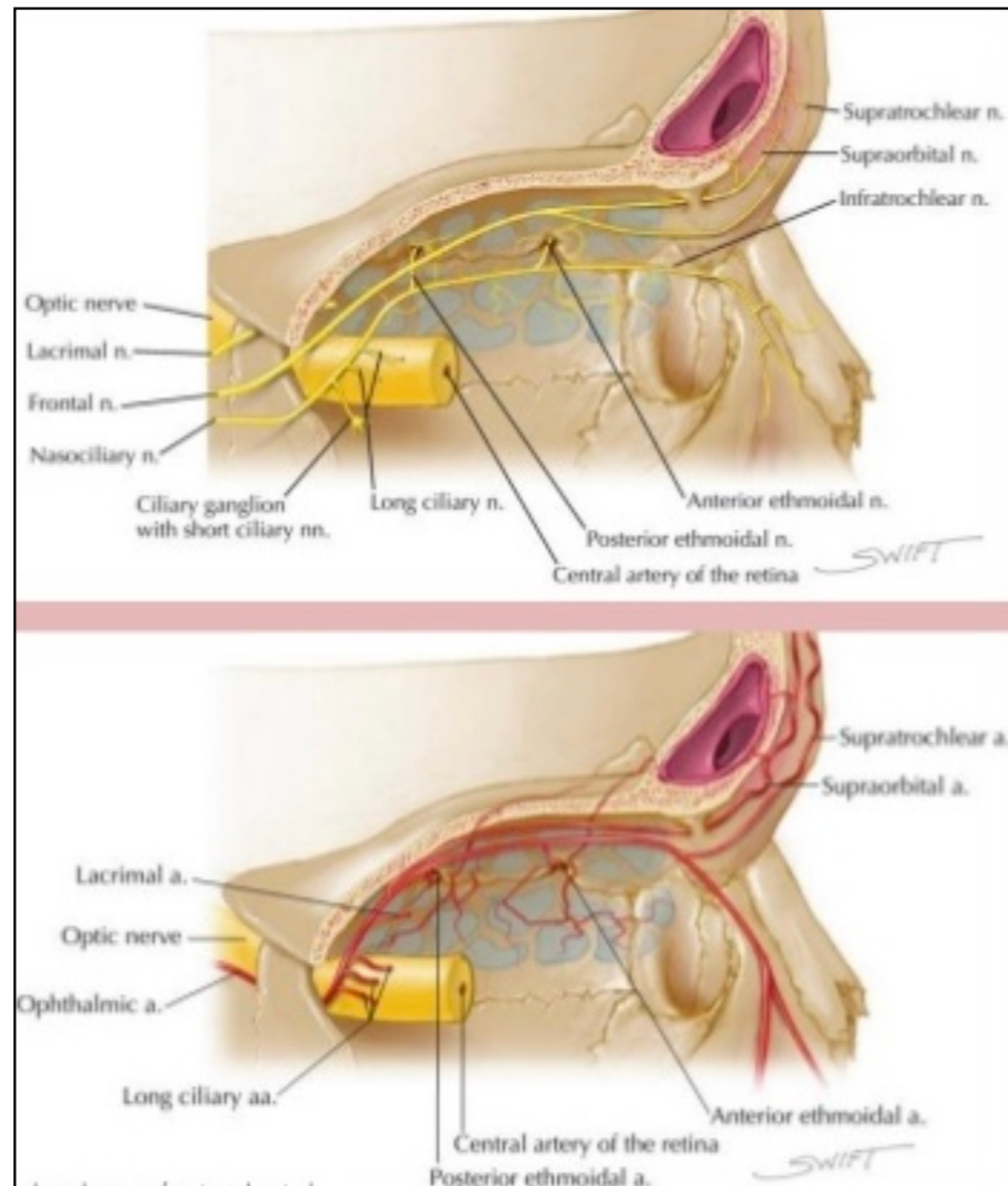
# ✦ Paranasal Sinuses.

- The students should know nerve supply of the maxillary sinus :



# ❖ Paranasal Sinuses.

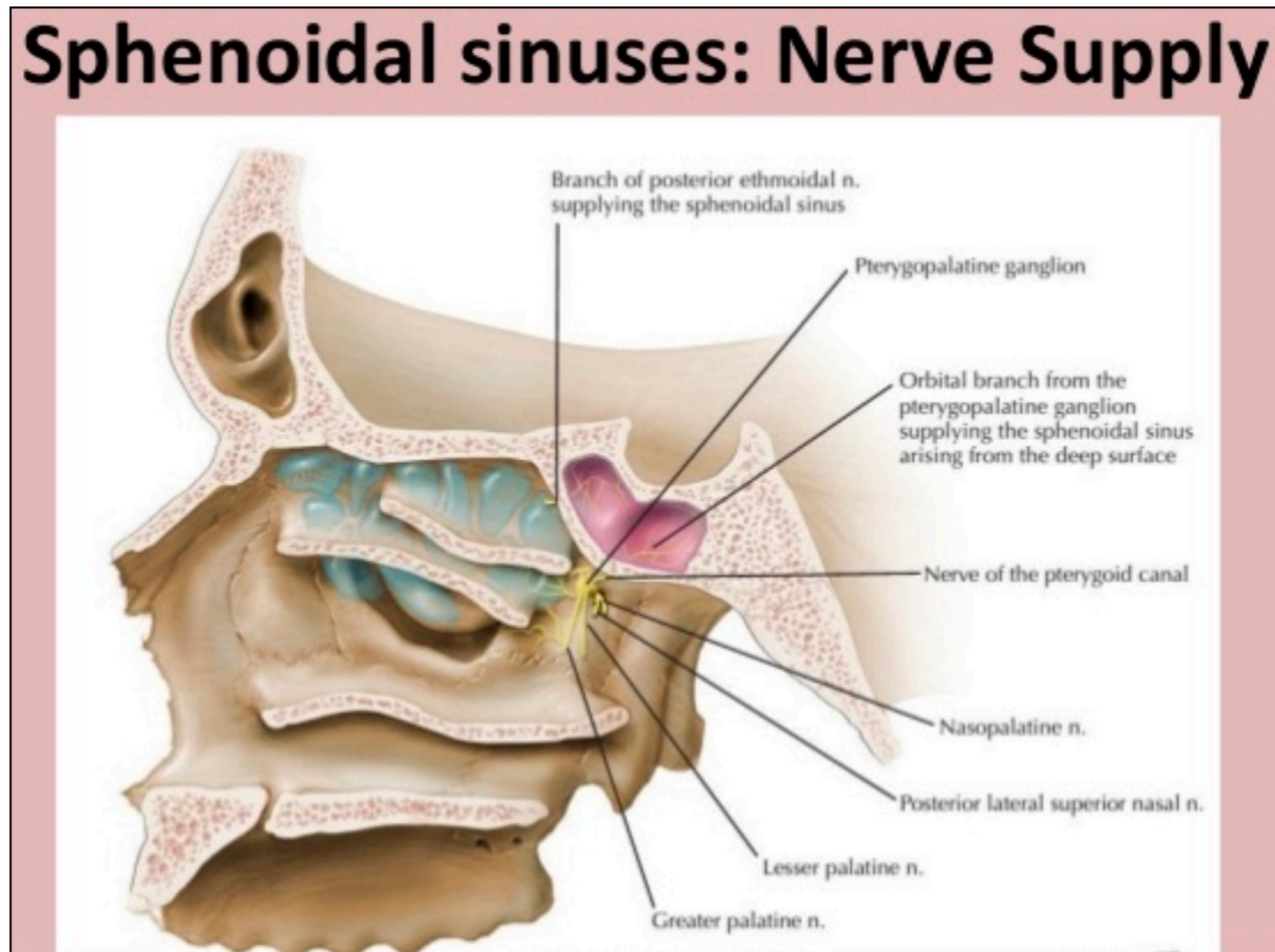
- The students should know nerve supply of the frontal sinus :





# ✦ Paranasal Sinuses.

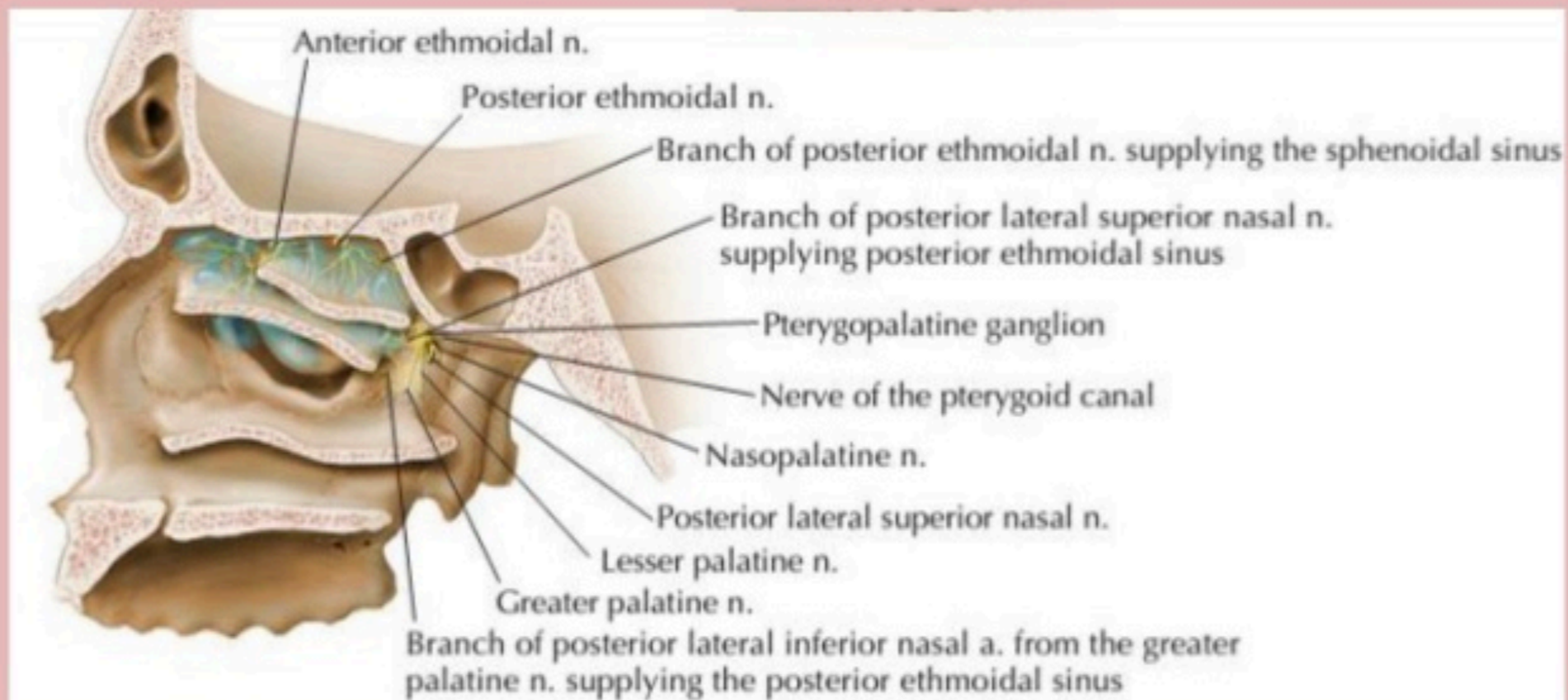
- The students should know nerve supply of the sphenoidal sinus :



# ✦ Paranasal Sinuses.

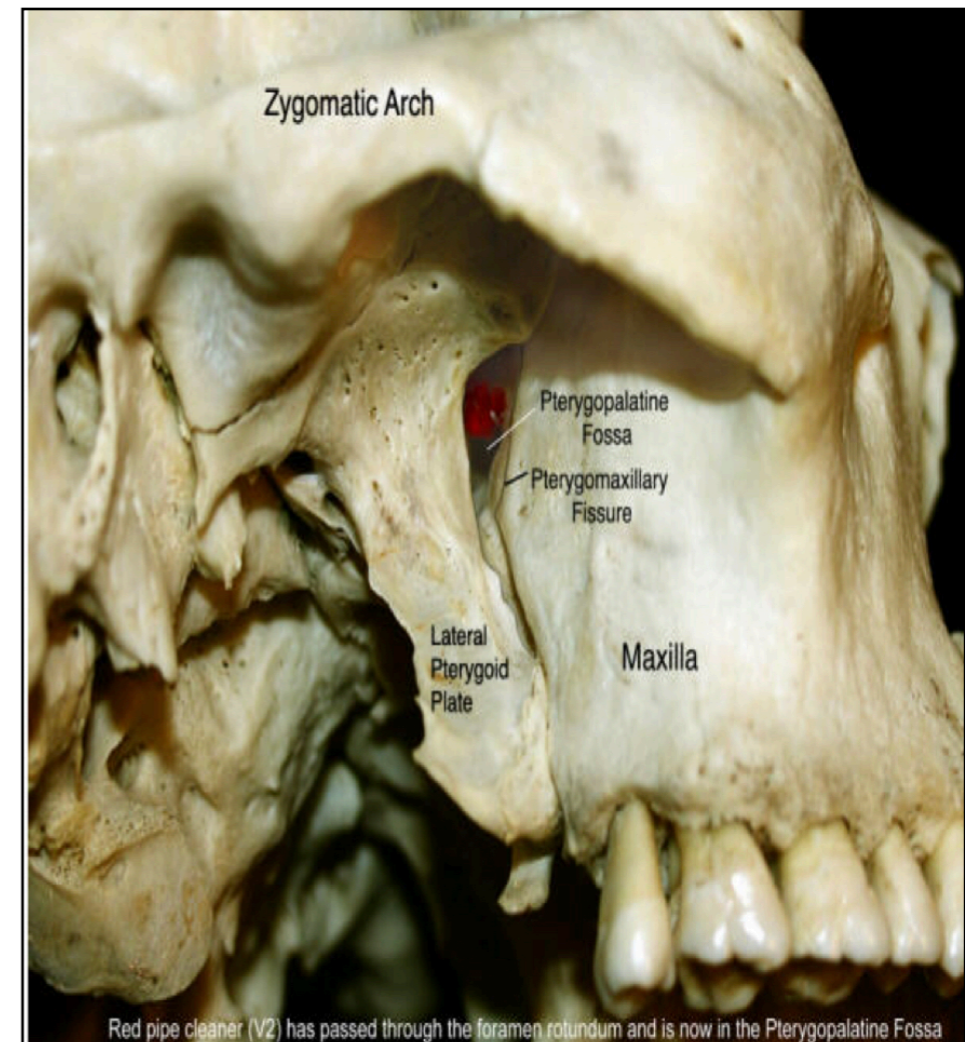
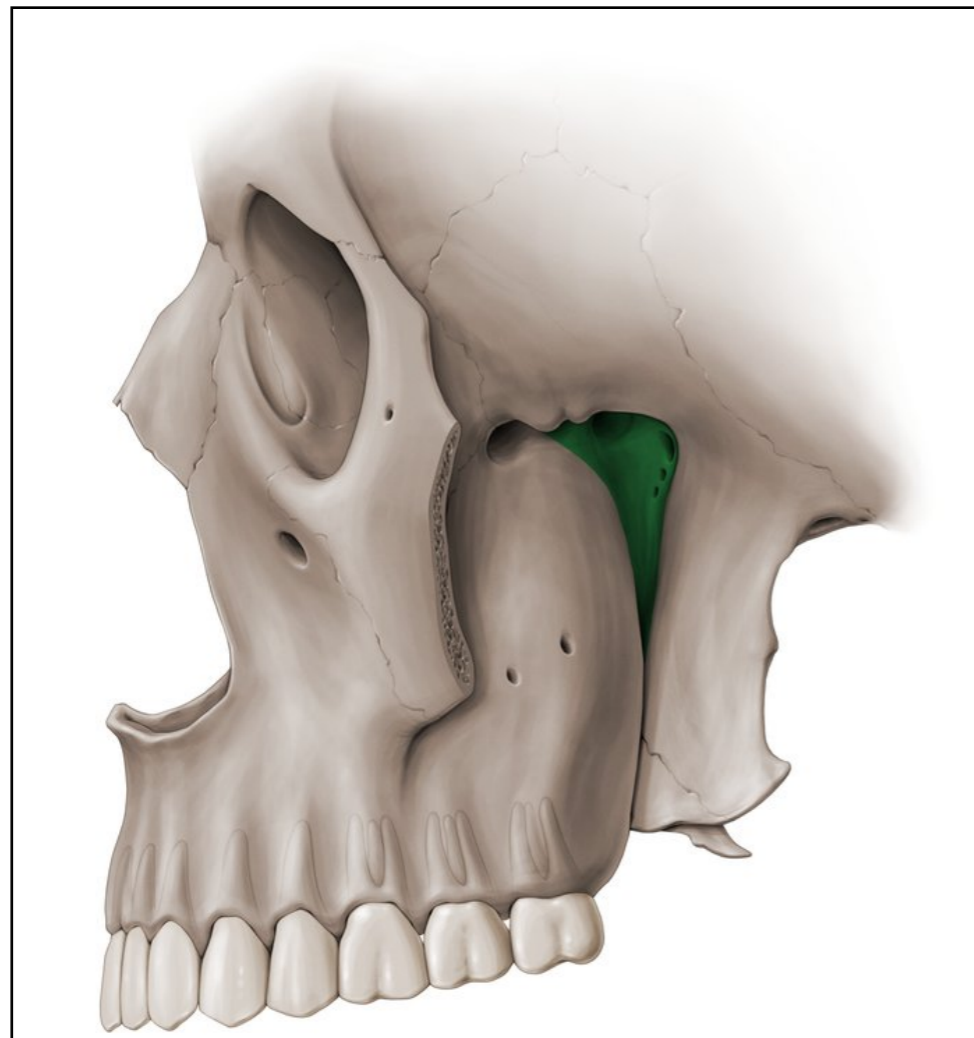
- The students should know nerve supply of the ethmoid sinus :

## Ethmoid Sinus : Nerve Supply



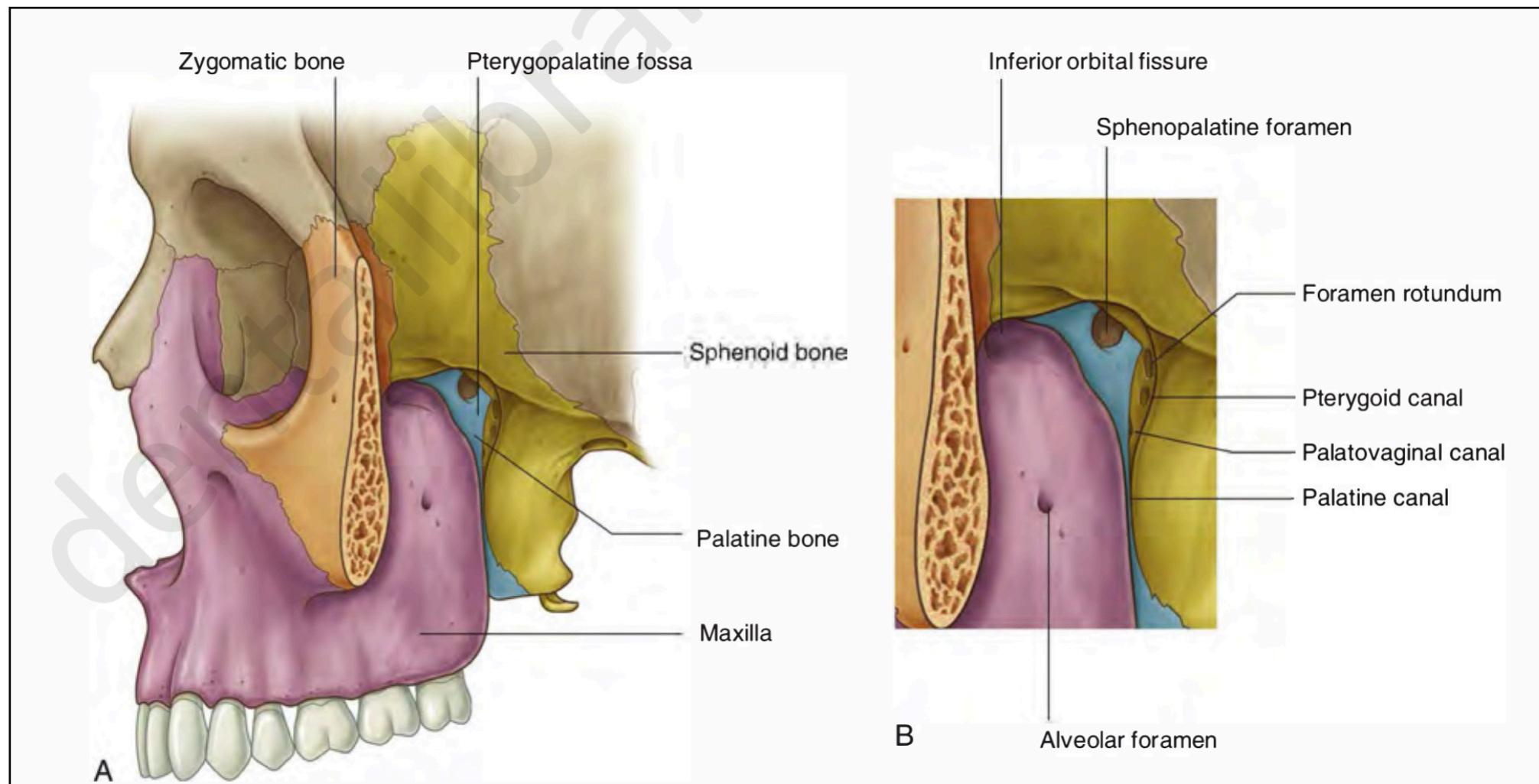
# ✦ PTERYGOPALATINE FOSSA.

- The students should know the site of the fossa:



# ✦ PTERYGOPALATINE FOSSA.

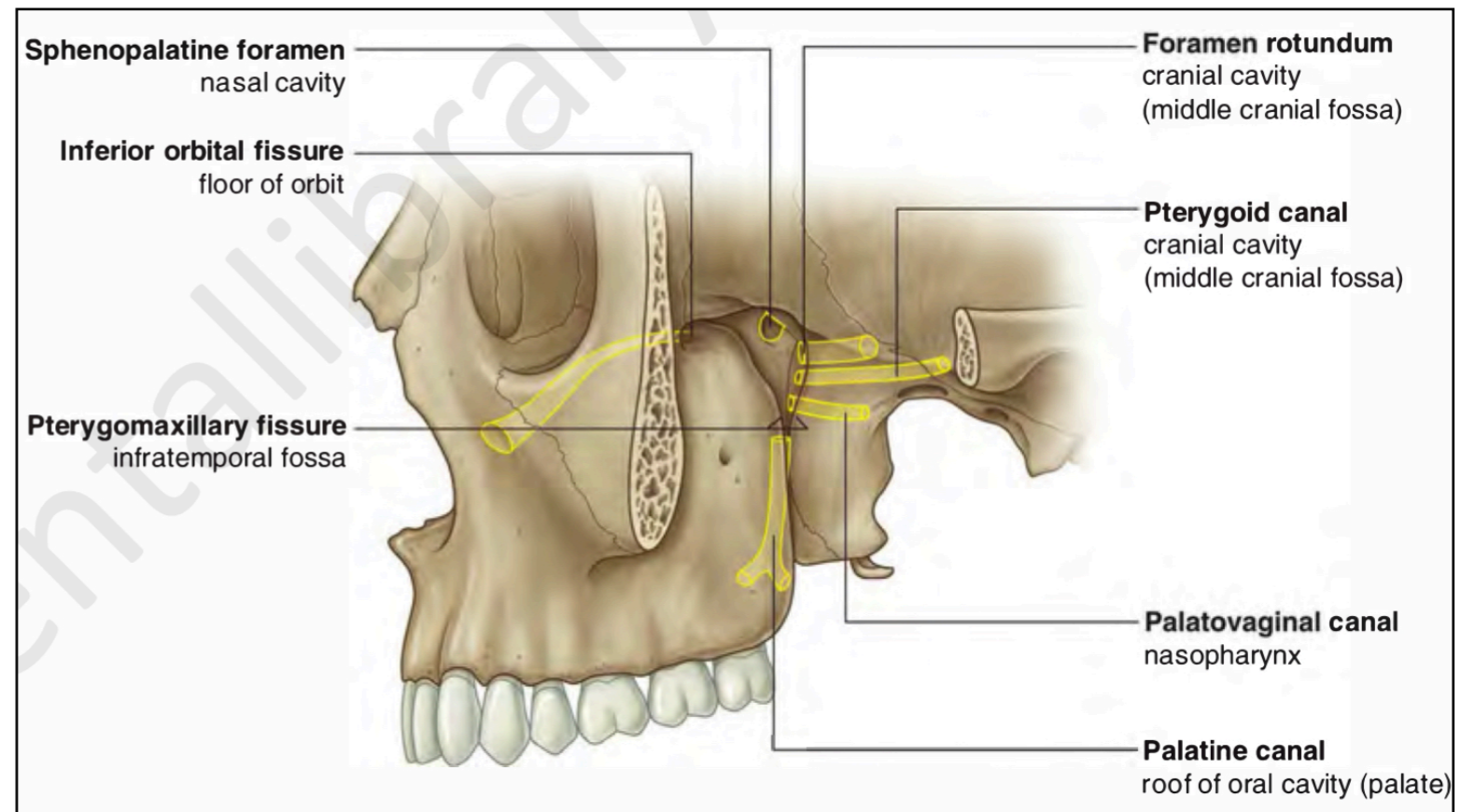
- The students should know the boundaries (walls) of the fossa:
  - Anterior wall
  - Medial wall
  - Posterior wall and roof



# ✦ PTERYGOPALATINE FOSSA.

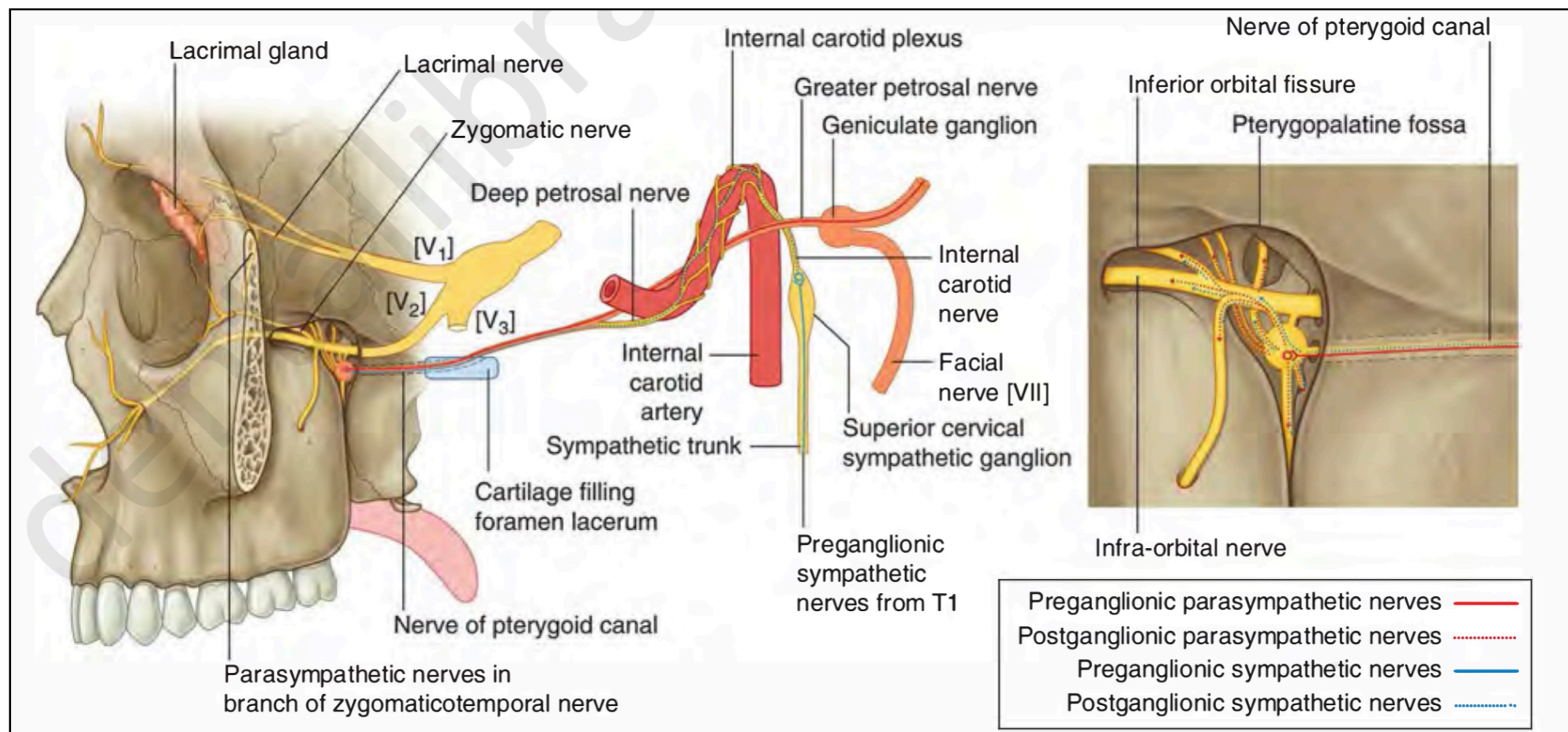
- The students should know the foramina and fissures of the fossa and the communication of each one:

1. Foramen rotundum
2. pterygoid canal.
3. Palatovaginal canal.
4. Palatine canal.
5. Sphenopalatine foramen.
6. Pterygomaxillary fissure.
7. Inferior orbital fissure.



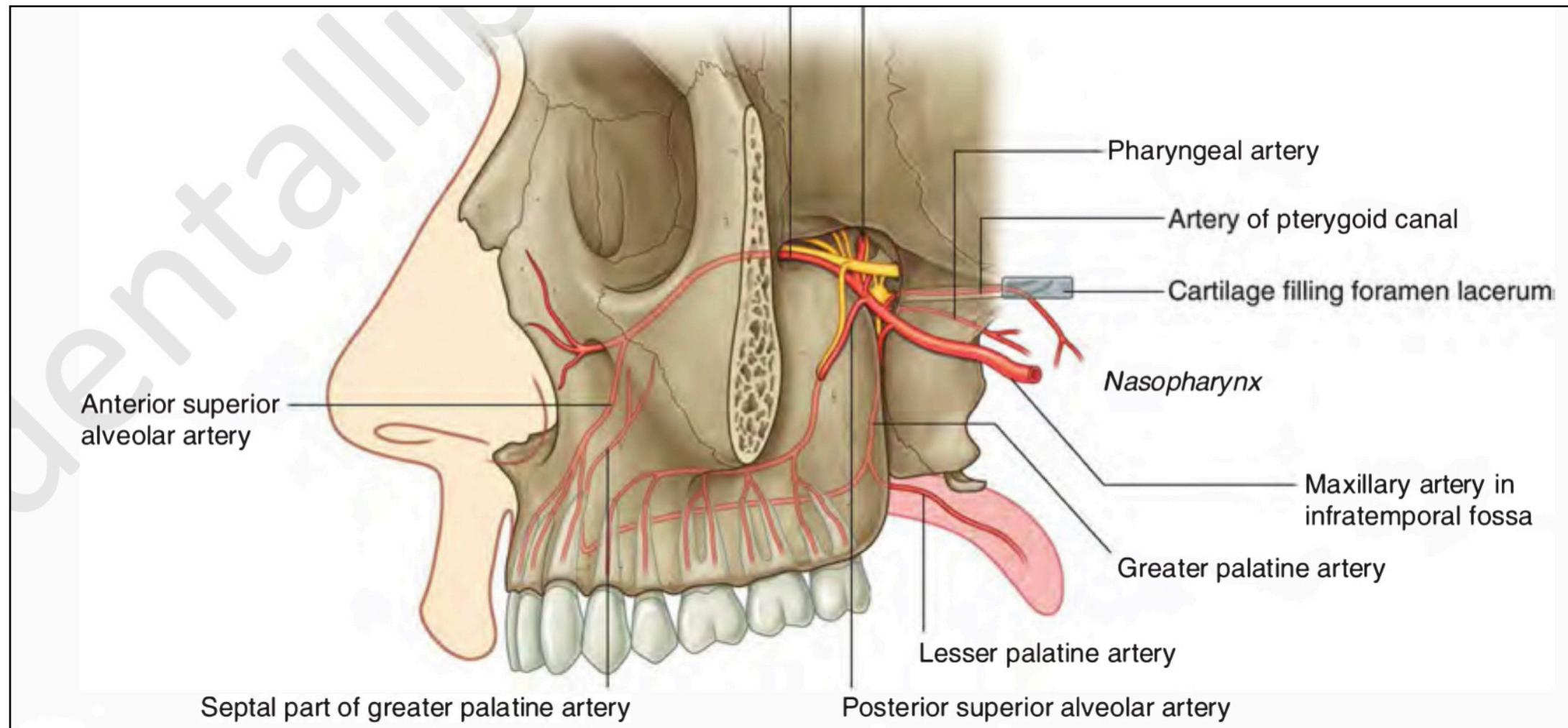
# ✦ PTERYGOPALATINE FOSSA.

- The students should know the contents of the fossa:
  1. The maxillary nerve.
  2. Terminal part of the maxillary artery.
  3. Nerve of the pterygoid canal.
  4. The pterygopalatine ganglion.
  5. Veins and lymphatics.



# ✦ PTERYGOPALATINE FOSSA.

- The students should know the contents of the fossa:



# ✦ Pterygopalatine ganglion

- The students should know that ganglion formed by cell bodies neurons associated with:
  1. Preganglionic parasympathetic fibers (great petrosal).
  2. Sensory and ganglionic branches of the maxillary nerve.
  3. Postganglionic sympathetic fibers (deep petrosal).

