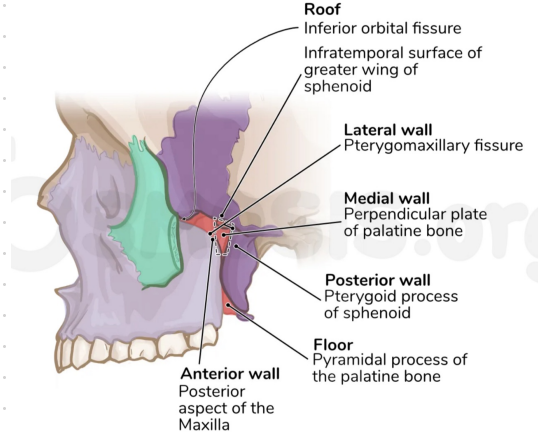
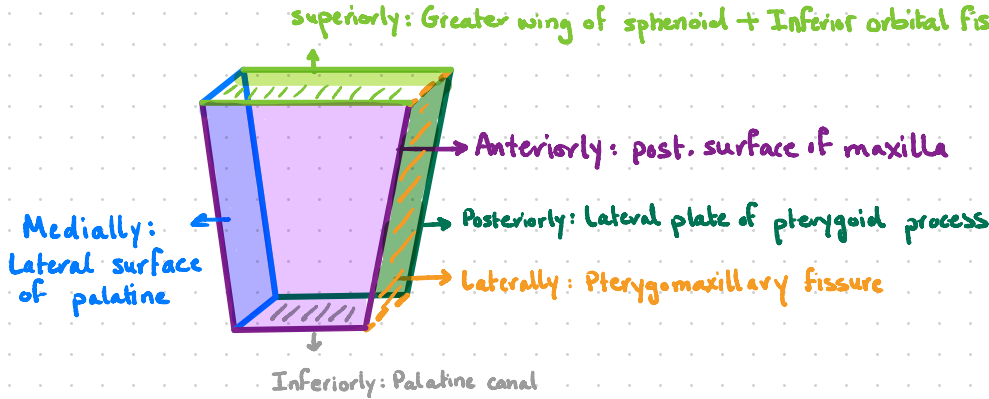
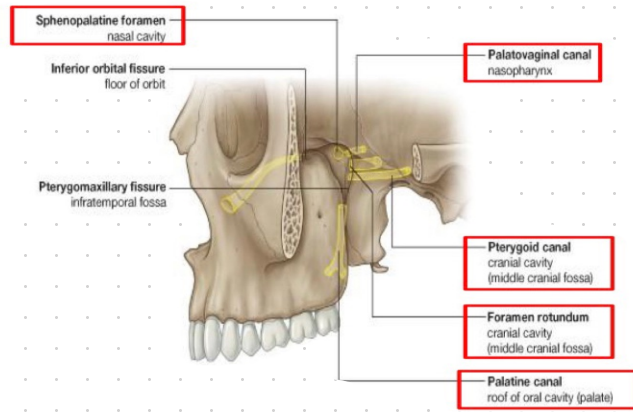
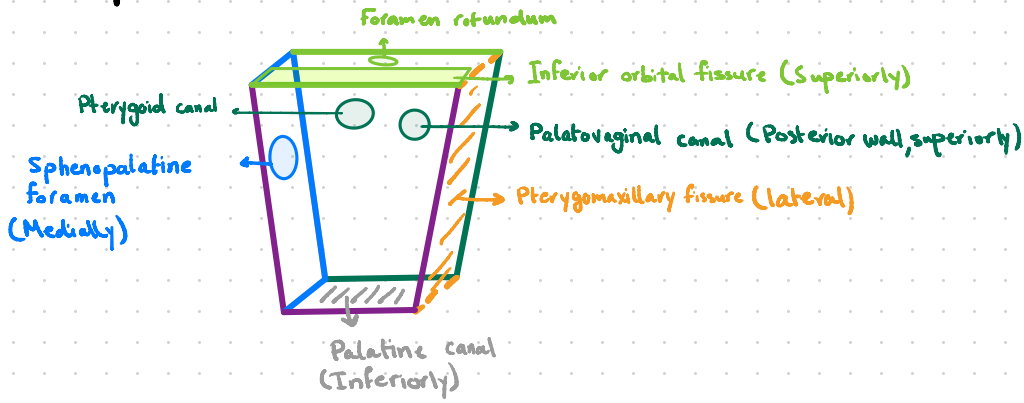


# Walls:



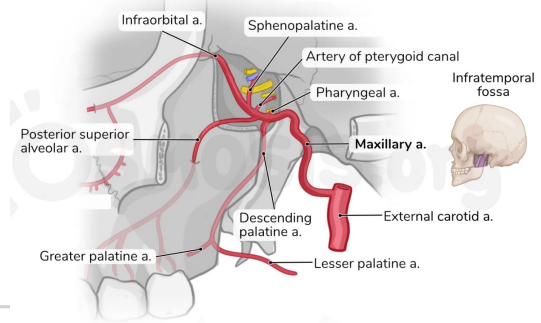
+ Pterygomaxillary fissure opens to infratemporal fossa

# Gateways:

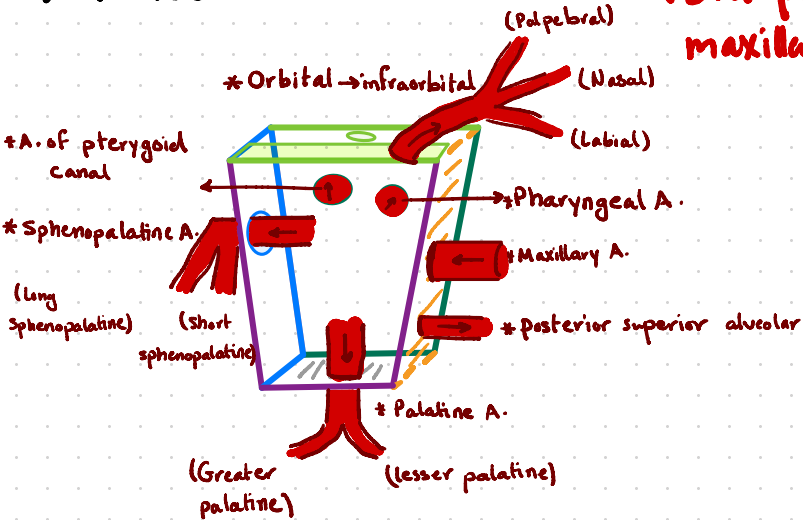


## Communication:

- 1- Foramen rotundum & pterygoid canal: Middle cranial fossa
- 2- Inferior orbital fissure: floor of the orbit
- 3- Palatovaginal canal: Nasopharynx
- 4- Sphenopalatine foramen: lateral wall of nasal cavity
- 5- Pterygomaxillary fissure: Infratemporal fossa
- 6- Palatine canal: Roof of the oral cavity



## Arteries



External carotid

[within parotid gland, adjacent to neck of mandible]

↓  
Maxillary A.

(with regard to lateral pterygoid muscle)

↓  
Before  
(1st part)

- Middle meningeal
- Inferior alveolar
- Deep auricular
- Anterior tympanic
- Accessory meningeal

↓  
Anterior / posterior to the muscle (2nd)  
[muscular branches]

- Deep temporal
- Masseteric
- Buccal
- Pterygoid

# Nerves:

