



FINAL RS 020 EXAM

Collected by:
Rahaf Turab
Haitham Saifi
Ahmad Saadeh
Anas khraim
Laith Sami

Patho:

1-Choose the correct pair of the disease with its most common symptom:

- A. Idiopathic Pulmonary Fibrosis -non progressive dyspnea
- B. asthma - chronic progressive dyspnea
- C. emphysema - hyperventilation
- D. bronchiectasis- dry cough

Ans: C

2- Which of the following is true regarding hypersensitivity pneumonitis:

- A. it mainly affects the bronchi.
- B. affects the lower lobes mostly.
- C. We need radiology and biopsy for the diagnosis of the acute form of the disease.
- D. Negative skin test

Ans: D

3- Which of the following is true regarding sarcoidosis:

- A. nodes are matted and painful.
- B. uveitis is the most common in eye involvement
- C. non caseating granulomas are common in erythema nodosum.

Ans: B

4- 69 year old gentleman, presented with cough and a 7 kg weight loss over the past 3 months and enlarged mass in chest. Biopsy shows a combination of cuboidal and spindle cells. Labs shows he is TTF-1 negative, does not express neuroendocrine markers, also no keratin pearls are seen. which of the following conditions will be mostly seen in this patient:

- A. distant metastasis
- B. excessive ADH secretion
- C. extensive pleural fibrosis

Ans: C

5- Choose the correct statement:

- A. TH1 T cells are the main player in fighting TB
- B. P-ANCA -

6- Choose the true statement:

- A. large emboli are associated usually with alveolar hemorrhage
- B. most thromboemboli are clinically silent

Ans: B

7- Regarding goodpasture syndrome, which of the following is correct:

- A. might result in rapidly progressive glomerulonephritis
- B. affects mainly the lungs and the liver

Ans: A

8- Which of the following is correct regarding TB?

Ans: Regional lymph nodes are less involved in secondary TB

9- Choose the true statement:

- A. silica cannot be fully digested by macrophages
- B. amorphous Silica is the most toxic and fibrogenic form of silica
- C. asbestosis begins in the upper lobes

Ans: A

10- True about coal dust pneumoconiosis:

- A. Coal workers may develop emphysema independent of smoking
- B. increased risk of lung carcinoma in coal miners

Ans: A

11- Hypercalcemia is associated with?

12- correct regarding adenocarcinoma:

Ans: it is associated with hypertrophic pulmonary osteoarthropathy

13- Choose the correct statement regarding the pathophysiology of asthma:

- A. the early stage is inflammatory in nature
- B. the late stage is characterized by the activation of cell mediated immunity
- C. IL-13 stimulates mucus secretions and IgE production

Ans: C

Physio:

1- Which one of the following has a direct effect on the central chemoreceptors of the brain :

- A. Co₂
- B. O₂
- C. Hco₃⁻
- D. Hydrogen ions

Ans: D

2- Which one of the following is a compensatory mechanism in high altitude :

- A. Left shift of the oxygen hemoglobin saturation curve
- B. Decrease BPG-2

- C. pulmonary resistance
- D. Normal Po₂

Ans: C

3- Which of the following causes of hypoxemia is not corrected by supplemental oxygen:

- A. hypoventilation
- B. right to left shunt
- C. fibrosis
- D. high altitude

Ans: B

4- Which of the following is true regarding respiratory centers:

- A. The nervous signal that is transmitted to the inspiratory muscles by DRG is mainly an instantaneous burst of action potentials
- B. Inspiratory center receives sensory input from peripheral chemoreceptors via the glossopharyngeal and vagus and phrenic nerves
- C. The neurons of the ventral respiratory group are mostly active during normal quiet respiration
- D. Stimulation of the apneustic center prolongs the contraction of the diaphragm

Ans: D

Embryology:

1-The definitive pleural cavity is formed by:

- A. Incorporation from pericardial pleura
- B. Incorporation from peritoneal pleura
- C. Somatopleuric mesenchyme
- D. Splanchnopleuric mesenchyme

Ans: C

2- The number of segments in the lungs after the postnatal period is:

- A. 10
- B. 15
- C. 23
- D. 27

Ans: C

3- Cleft lip is a result of fusion between maxillary prominence and:

- A. Mandibular
- B. Lateral nasal
- C. Medial nasal

Ans: C

Histology:

1-Cell found in the septum and is called septal cell:

- A. Type 1 pneumocyte
- B. Type 2 pneumocyte
- C. Dust cell

Ans: B

2- Wrong about dust cell:

- A. Derived from monocyte circulating in the blood
- B. Reaches the pharynx by ciliary movement
- C. The most abundant cell in the alveolar wall

Ans: C

3- We can see only 1 or 2 pieces of cartilage in which of the following:

- A. main bronchi
- B. secondary bronchi
- C. bronchopulmonary segments
- D. large bronchioles
- E. small bronchioles

Ans: C

Micro:

1- A case with : sore throat, inflamed tonsils, headache, fever, pinkeye (conjunctivitis), what virus causes these symptoms?

Ans: Respiratory adenovirus

2- To diagnose viral infections:

Ans: Multiplex real time PCR.

3- Most common pathogen to cause croup (laryngotracheobronchitis) :

Ans: Parainfluenza 3

4- A case about bronchiolitis, and the answer was RSV

PBL:

1- A case about a patient with covid who developed ARDS, which of the is not expected to be in this patient:

- A. the PF ratio is 190
- B. expiratory wheeze with prolonged expiratory phase
- C. the patient has Adult respiratory distress syndrome

Ans: B

2- A mother came to the clinic with her son with symptoms started 3 days ago of headache, fever, rhinorrhea, wheeze. Which of the following is true about this case:

- A. Asthma
- B. bronchiolitis
- C. Croup

Ans: B

Pharma:

1- the most effective drugs used in tuberculosis:

- A. Streptomycin and ethionamide
- B. Isoniazid and rifampin
- C. Rifampin and PAS

Ans: B

2- which of the following is considered a narcotic drug acting on the cough center:

- A. Diamorphine
- B. Dextromethorphan
- C. Pholcodine
- D. Glaucine

Ans:A

3- all of the following drugs are used in asthma except:

- A. Beta-2 adrenergic antagonist
- B. Beclomethasone
- C. Theophylline

Ans:A

4-choose the correct statement regarding asthma:

- A. The course of treatment in predictable
- B. The goal of therapy is normal function

Ans: B

5-all of the following about ethionamide is correct except:

- A. Blocks mycolic acid synthesis
- B. Given orally
- C. Good distribution
- D. Related to rifampin

Ans: D

6- All of the following drugs quickly relief asthma, except:

- A. Inhaled anticholinergics
- B. Systemic corticosteroids
- C. Oral methylxanthines
- D. Inhaled short acting beta 2 agonist

Ans: C

7- Regarding drugs affecting mucociliary function, all the following are true except:

- A. Decrease mucus production
- B. Increase cough effectiveness
- C. Increase the volume of secretions
- D. Change the consistency of mucus
- E. Increase mucociliary clearance

Ans: B

8-TB drugs are combined together to:

- A. Decrease bed rest time
- B. Shortening time required for treatment
- C. Avoid resistance development

Ans: C

9- Which of the following is false regarding Isoniazid?

- A. Small molecule, water soluble
- B. Structurally related to pyridoxine
- C. Prodrug activated by KatG
- D. Binds to B subunit of bacterial RNA polymerase

Ans:D

LAB:

1- Which of the following is not drained by the middle meatus?

- A. Posterior ethmoidal sinus

- B. Middle ethmoidal sinus
- C. Frontal sinus
- D. Maxillary sinus
- E. Anterior ethmoidal sinus

Ans: A

2- What passes from the nasal cavity to the oral cavity through the incisive canal?

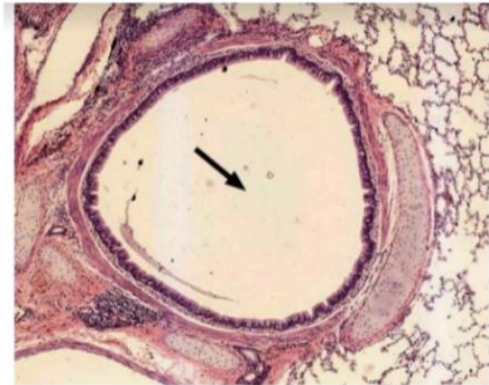
- A. Nasopalatine nerve
- B. Greater palatine nerve

Ans: A

This section was taken from:

- a. Trachea
- b. Primary bronchus
- c. Secondary bronchus
- d. Tertiary bronchus

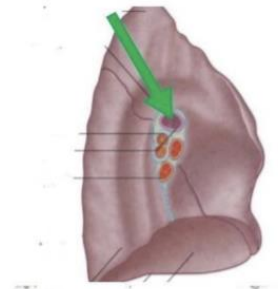
Answer: C



4) The pointed structure is:

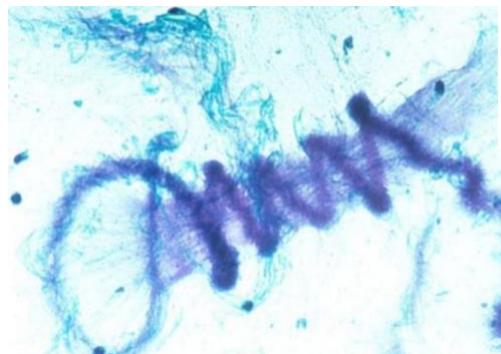
- a. Pulmonary vein
- b. Pulmonary artery
- c. Ep arterial bronchus
- d. Hyp arterial bronchus

Answer: B



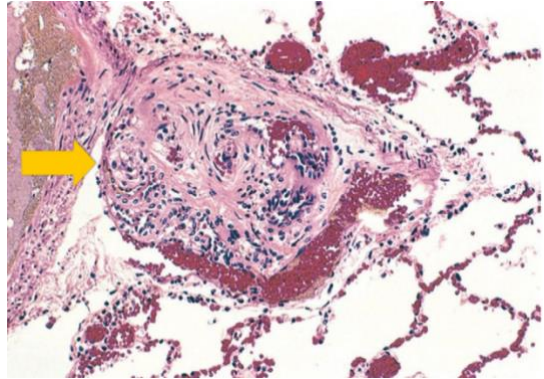
5- Identify:

Ans: Churchman spirals



- 6- the following is associated with ?
- A. pulmonary hypertension
 - B. thrombus within the lumen of one of the small pulmonary arteries

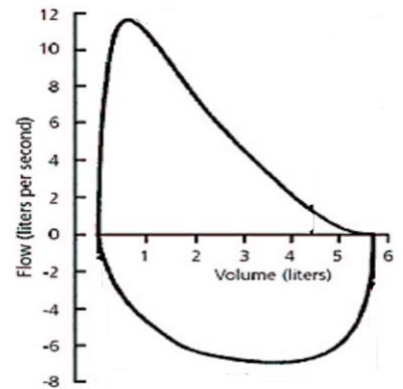
Ans: A



- 7- which of the following can be known from this graph :

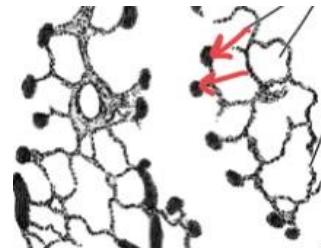
- A. duration of Expiration
- B. the reproducibility of the test
- C. FVC
- D. TLC

Ans: C



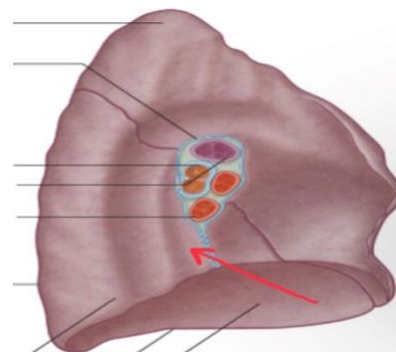
- 8-the following structure is:

Ans: smooth muscle



- 9-this depression is related to:

- A. Descending aorta



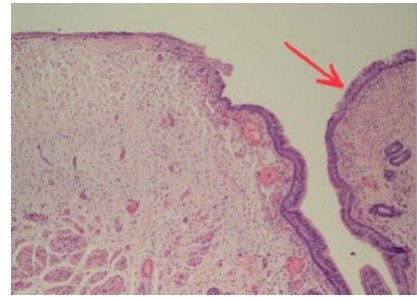
- B. Esophagus
- C. Arch of aorta

Ans: B

10-the covering epithelium is:

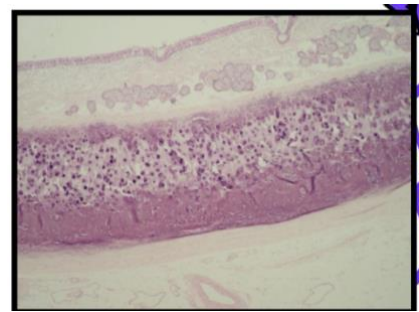
- A. Pseudostratified ciliated columnar epithelium
- B. Stratified squamous non keratinized epithelium

Ans: b



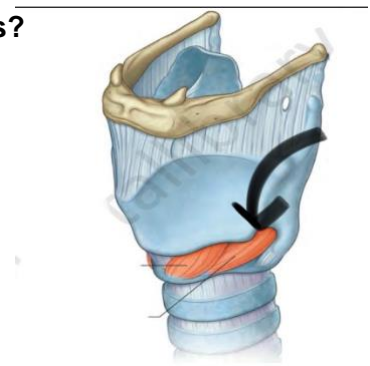
11- Identify:

Ans: Trachea



12- the artery associated with the nerve supplying this structure is?

Ans: Superior thyroid artery



13-) Which of the following passes through the opening

- a. Inferior laryngeal artery
- b. External laryngeal nerve
- c. Internal laryngeal nerve
- d. Superior thyroid artery

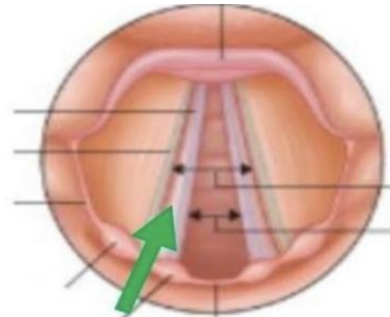
Answer: C



14- A dentist drops a tooth inside the patient's airway, where will it most likely be?

8) Which of the following is wrong about the pointed structure?

- a. It has a smooth muscle
- b. no blood vessels
- c. no lymph drainage
- d. it is lined by oral epithelium



Answer: A