

Neurophysiology

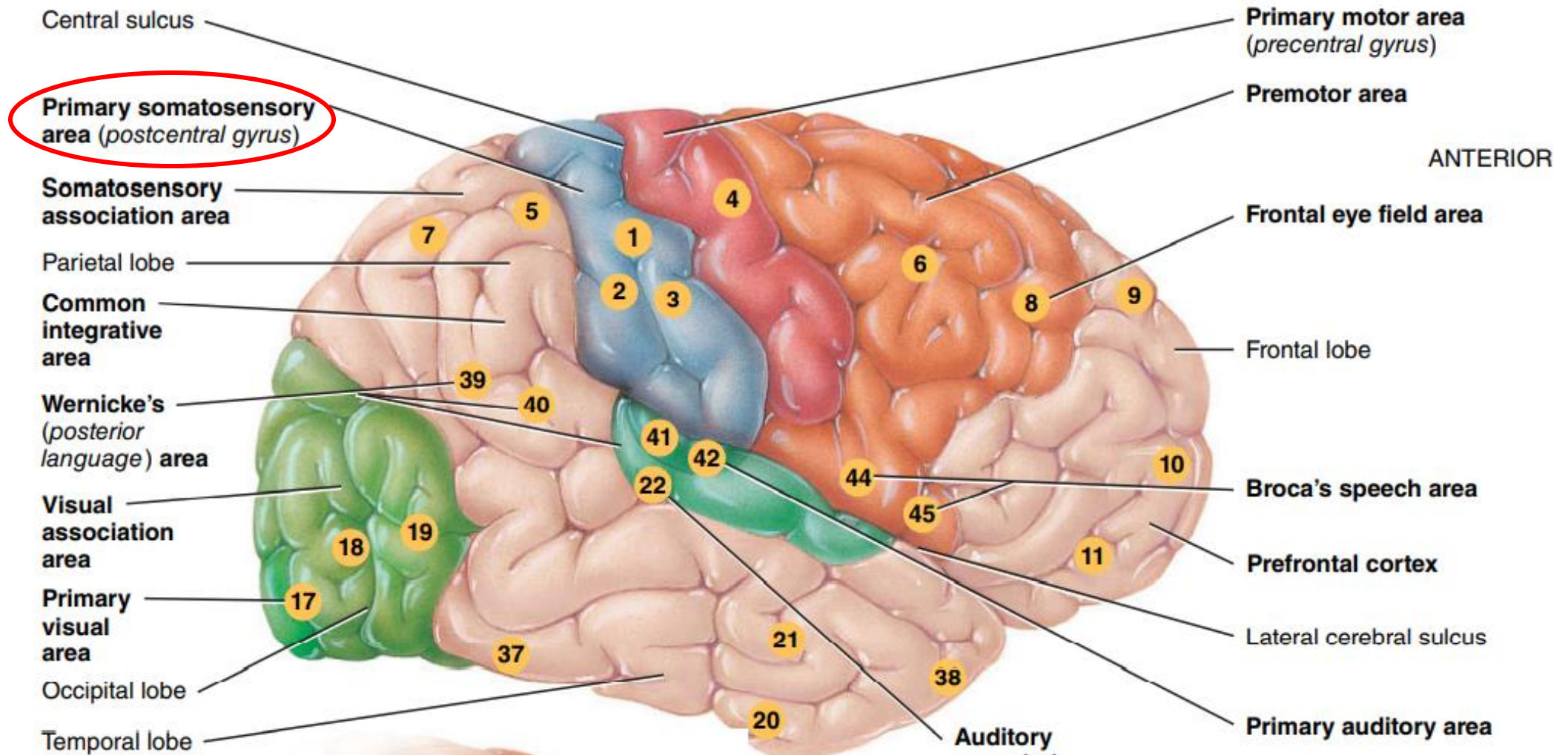
Somatic Sensory Pathways

Fatima Ryalat, MD, PhD

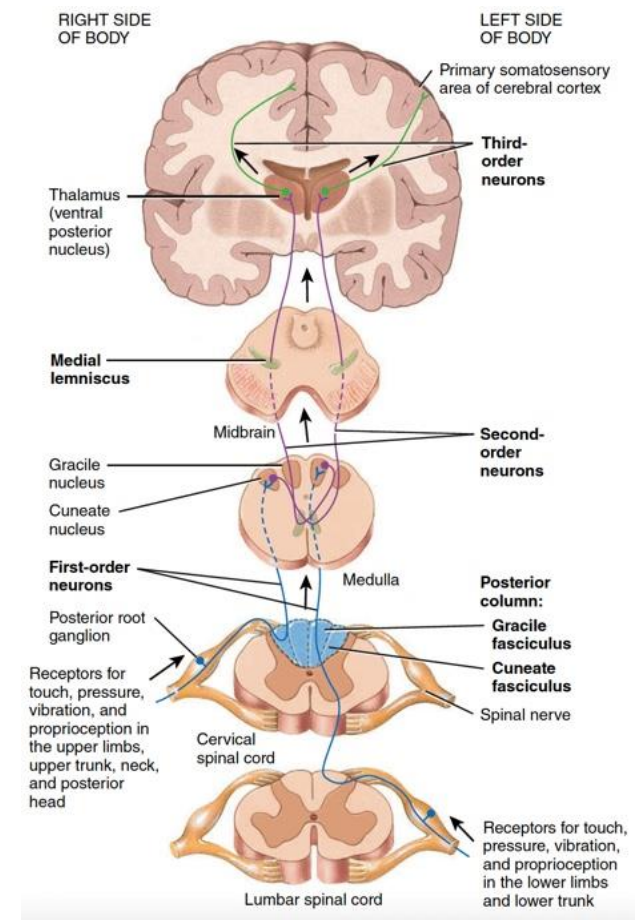
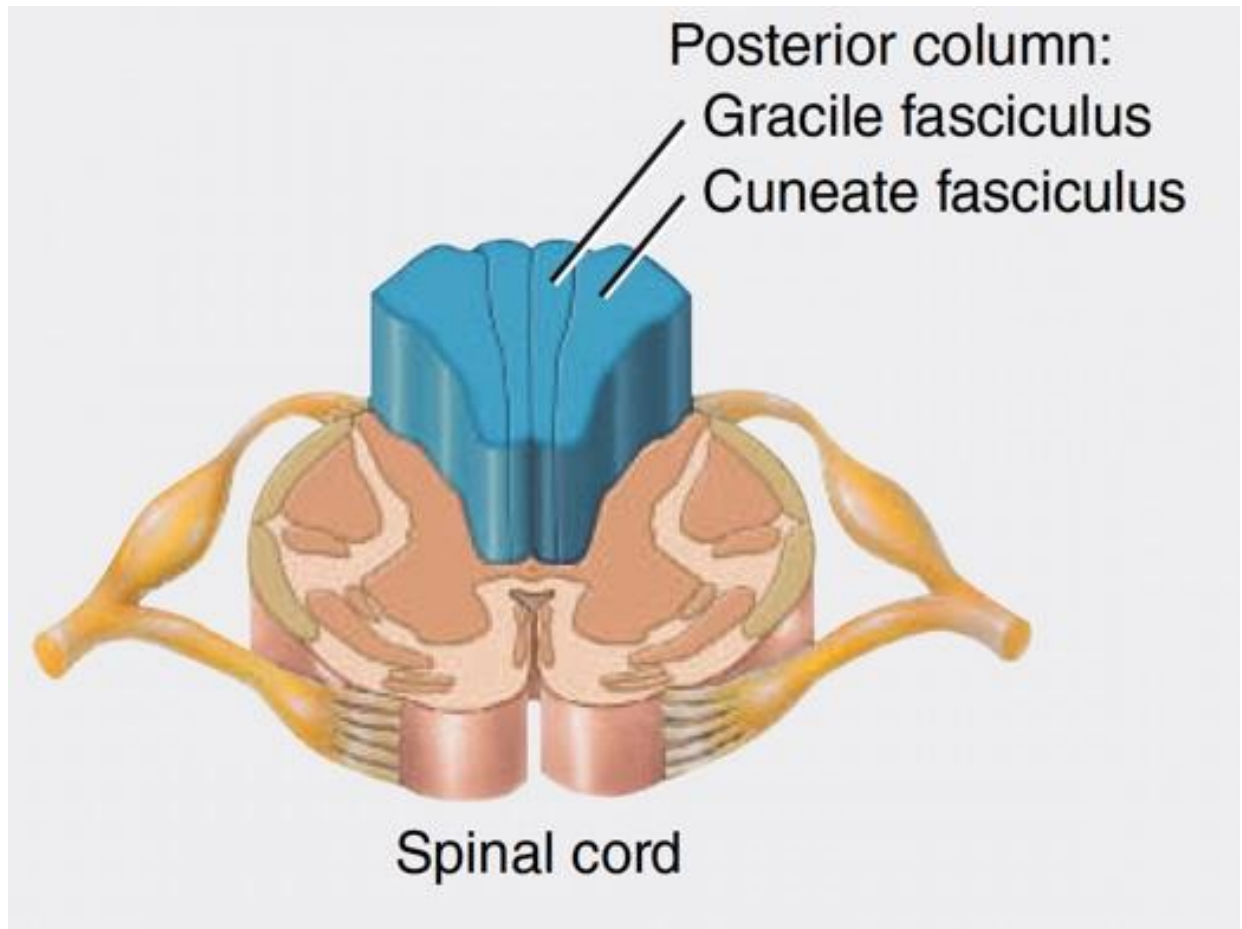
Assistant Professor, Department of Physiology and Biochemistry

School of Medicine, University of Jordan

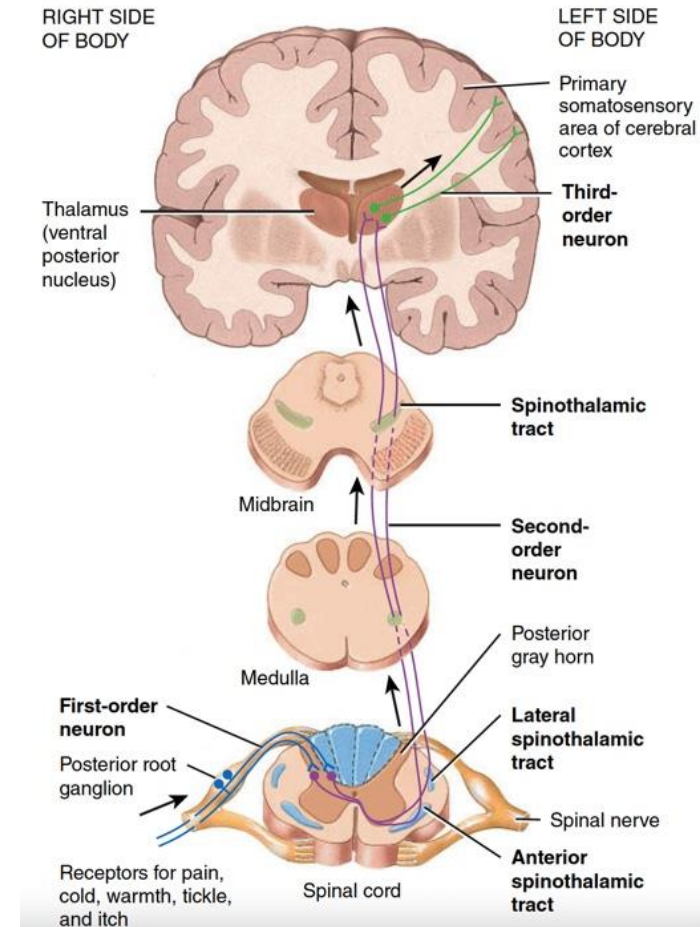
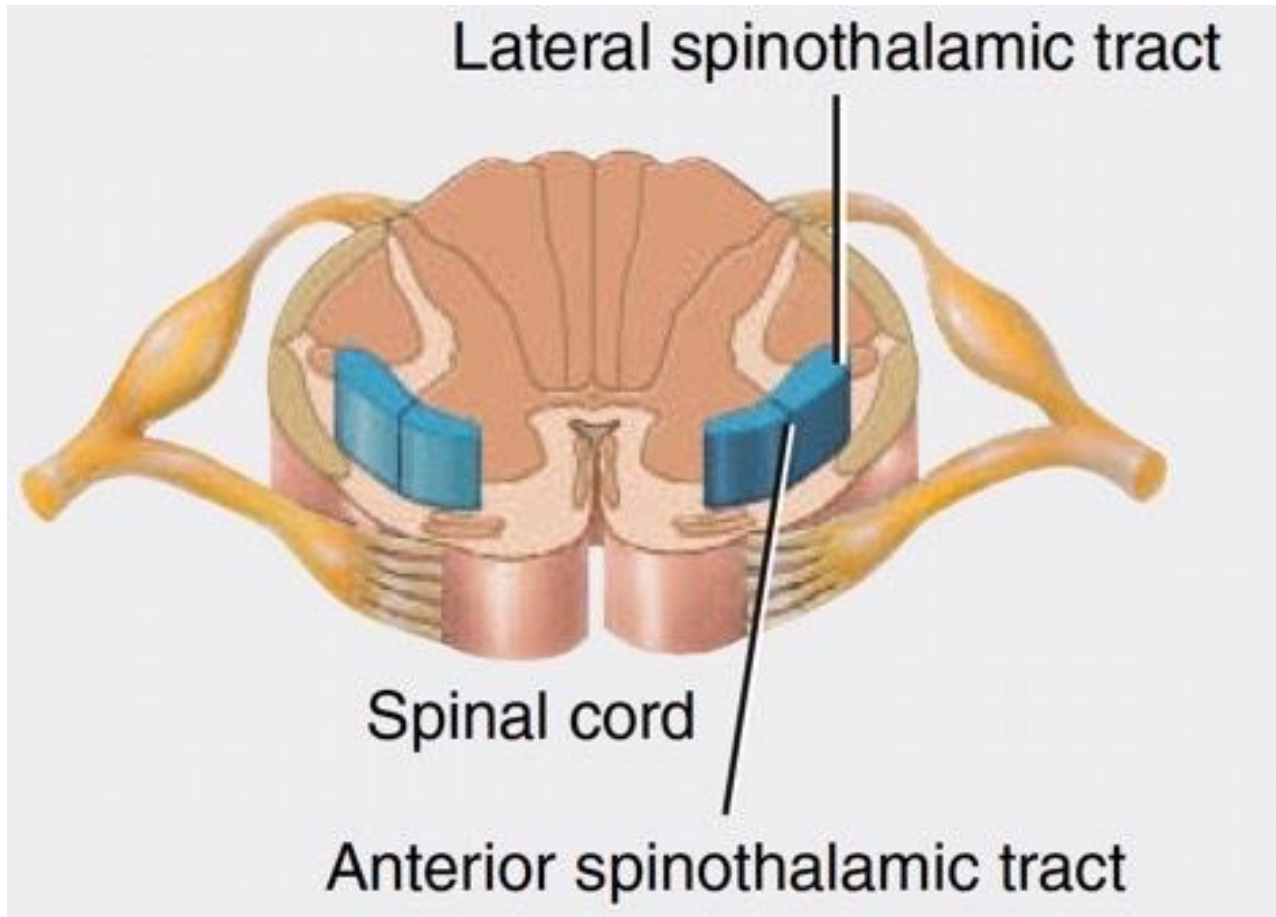
Cerebral cortex



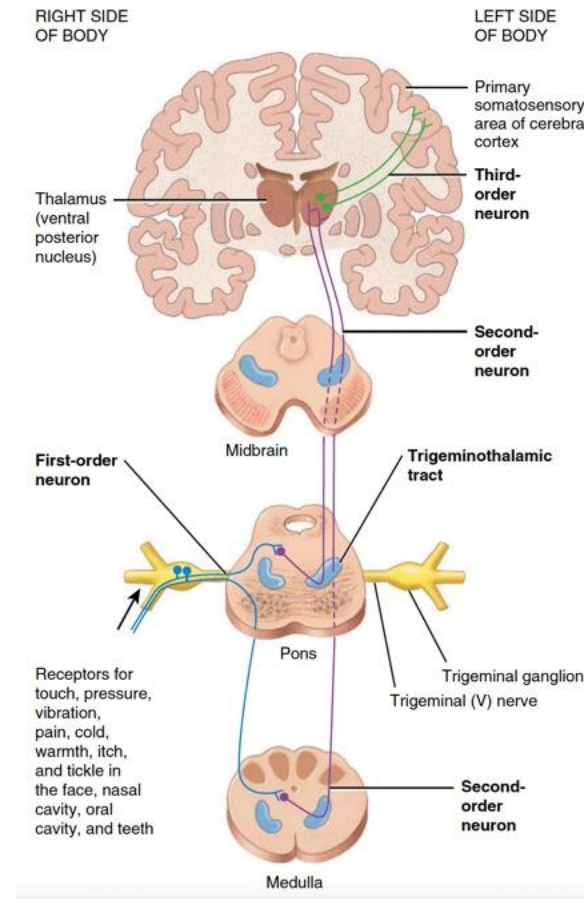
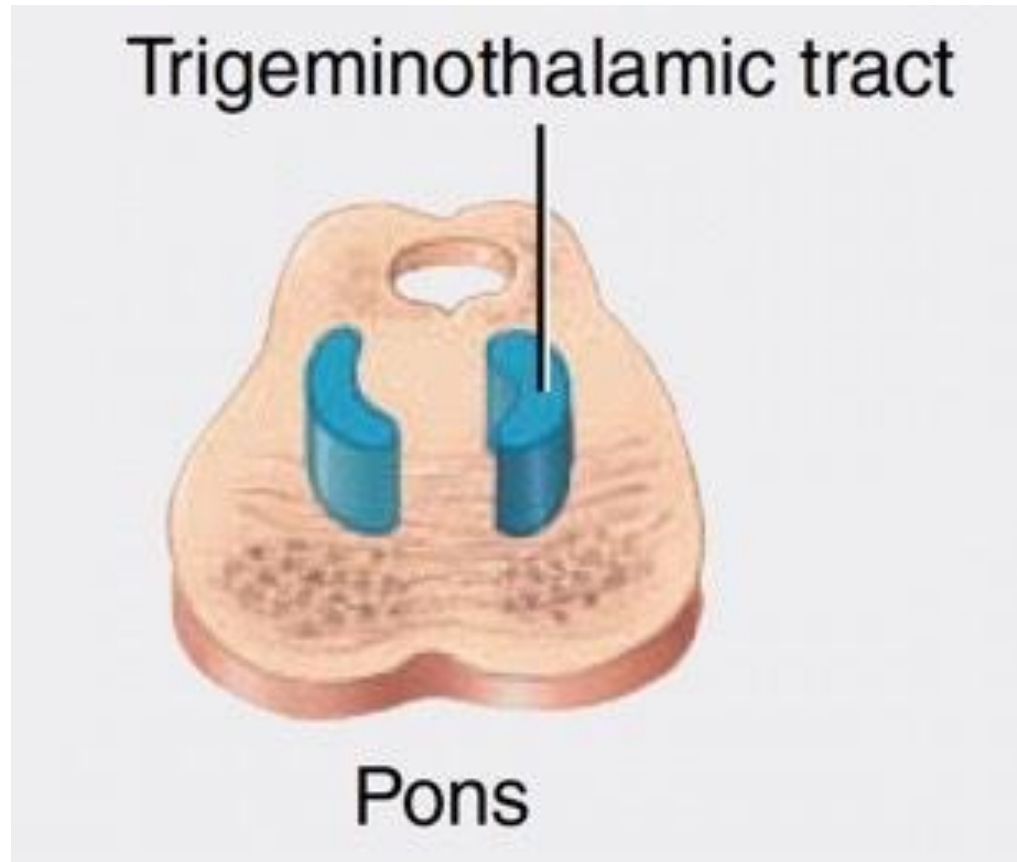
Posterior (Dorsal) Column- Medial Lemniscus Pathway



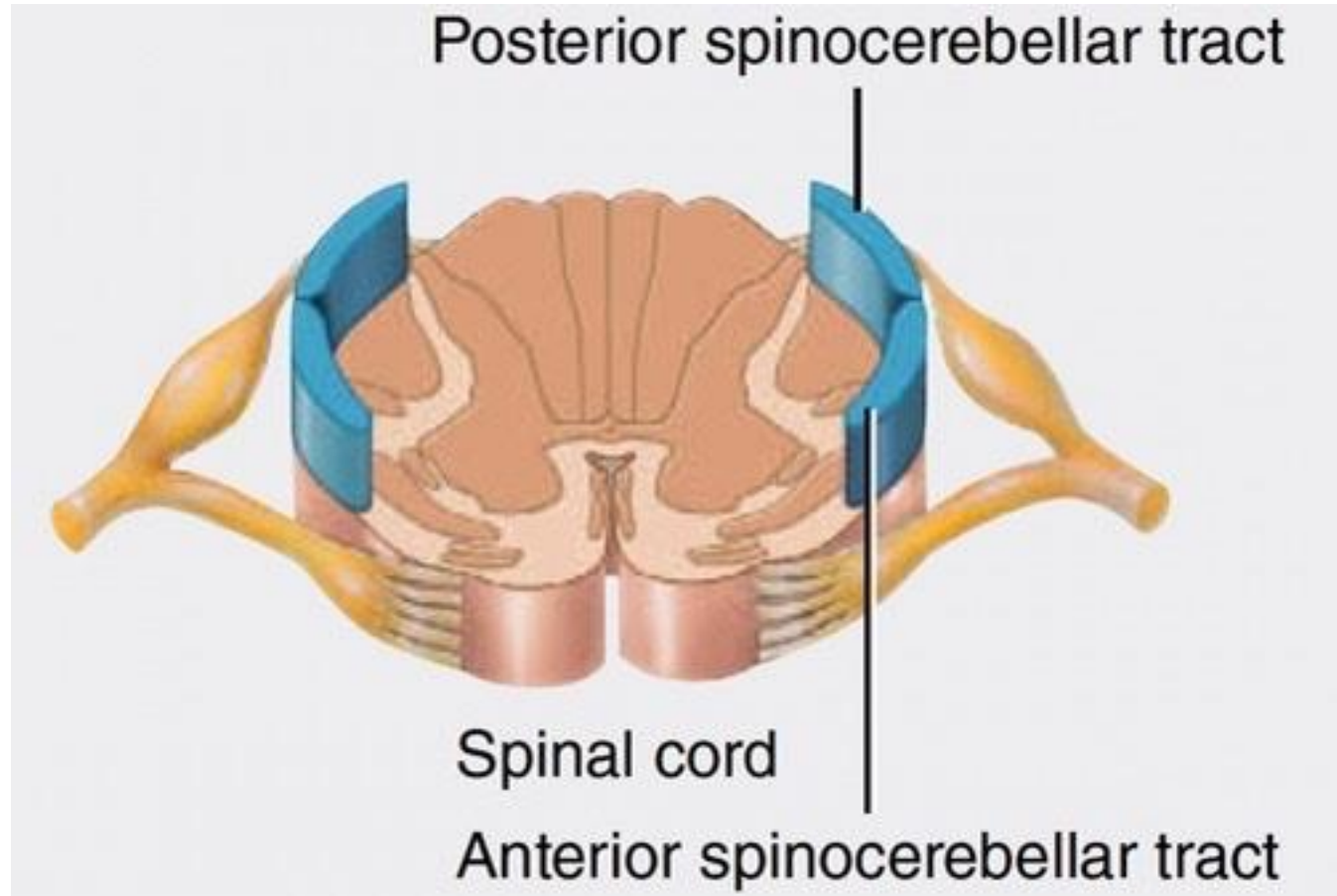
Antero-Lateral Spinothalamic Pathways



Trigeminothalamic Pathway



Anterior and Posterior Spinocerebellar Pathways



Somatic sensory pathways

- A somatic sensory pathway to the cerebral cortex consist of thousands of **sets of three neurons**:
- a first-order neuron, a second-order neuron, and a third-order neuron.
- Integration (processing) of information occurs at each synapse along the pathway.

First-order (primary) neurons

- Sensory neurons that conduct impulses from somatic sensory receptors into the brainstem or spinal cord.
- Somatic sensory impulses propagate along spinal or cranial nerves.
- All other neurons in a somatic sensory pathway are located completely within the CNS.

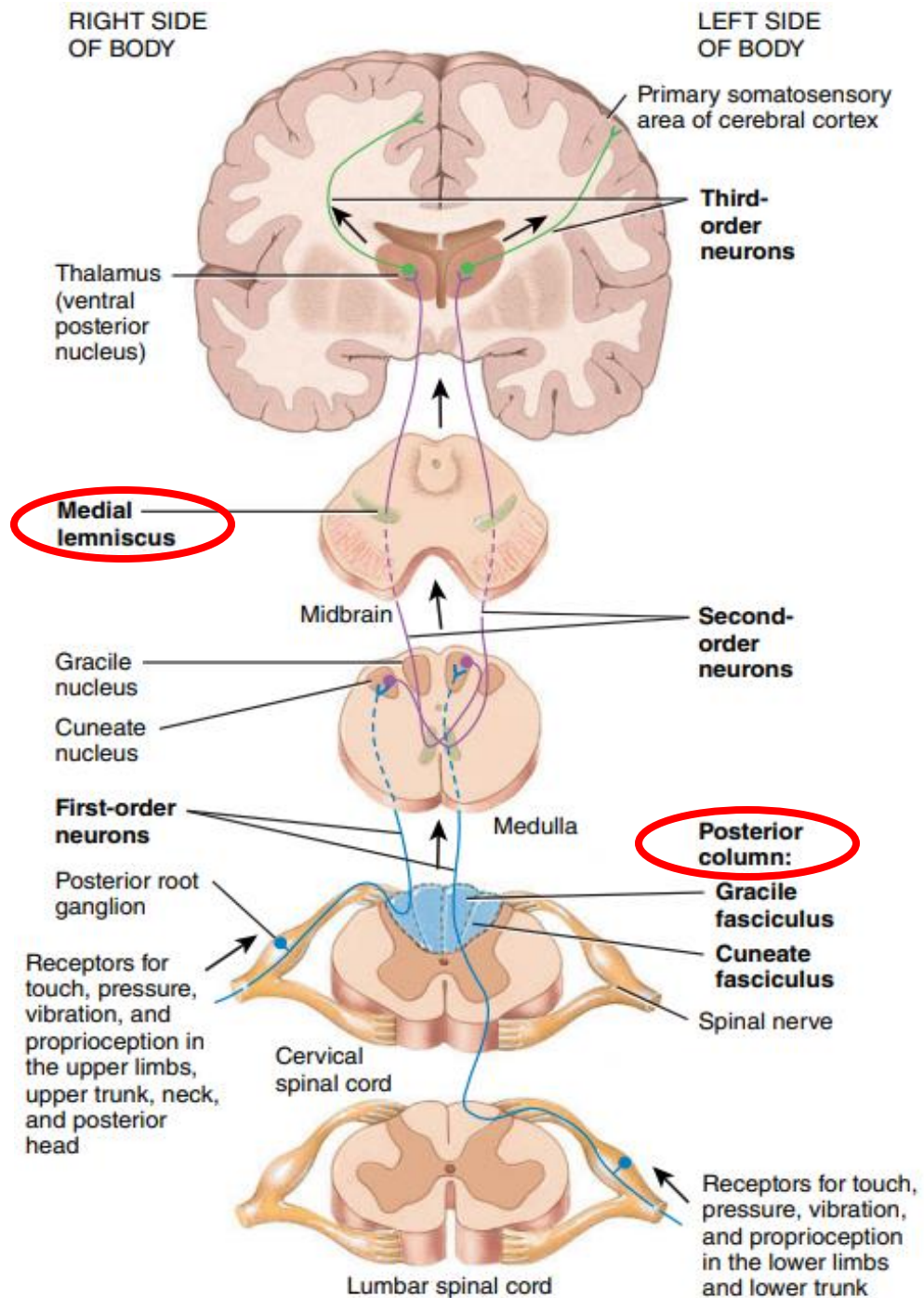
Second-order (secondary) neurons

- Conduct impulses from the brainstem or spinal cord to the **thalamus**.
- Axons of second-order neurons **decussate** (cross over to the opposite side) as they course through the brainstem or spinal cord before ascending to the thalamus.

Third-order (tertiary) neurons

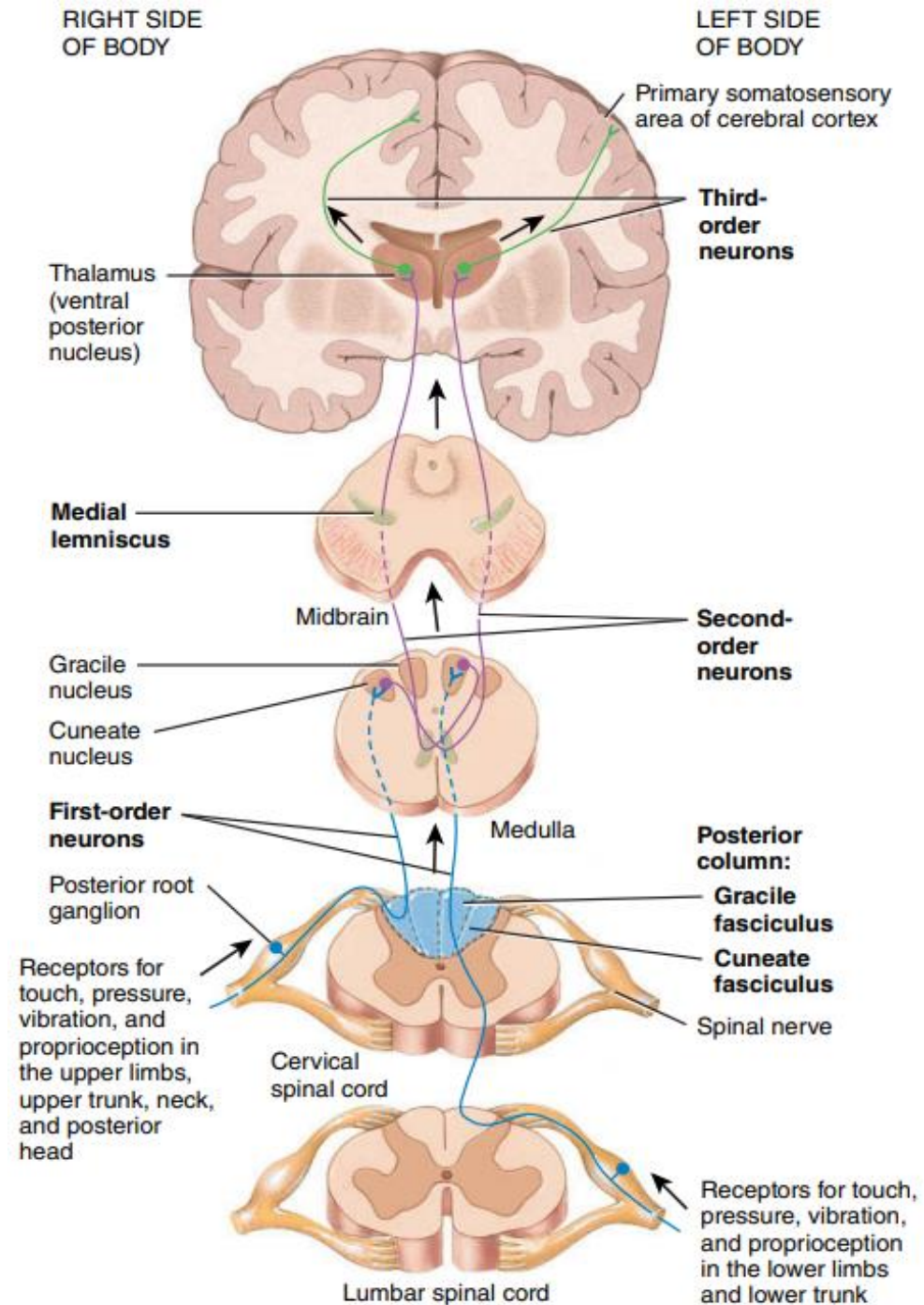
- Conduct impulses from the thalamus to the primary somatosensory area on the same side.
- Somatic sensory information on one side of the body is perceived by the primary somatosensory area on the opposite side of the brain.

Posterior column - medial lemniscus pathway



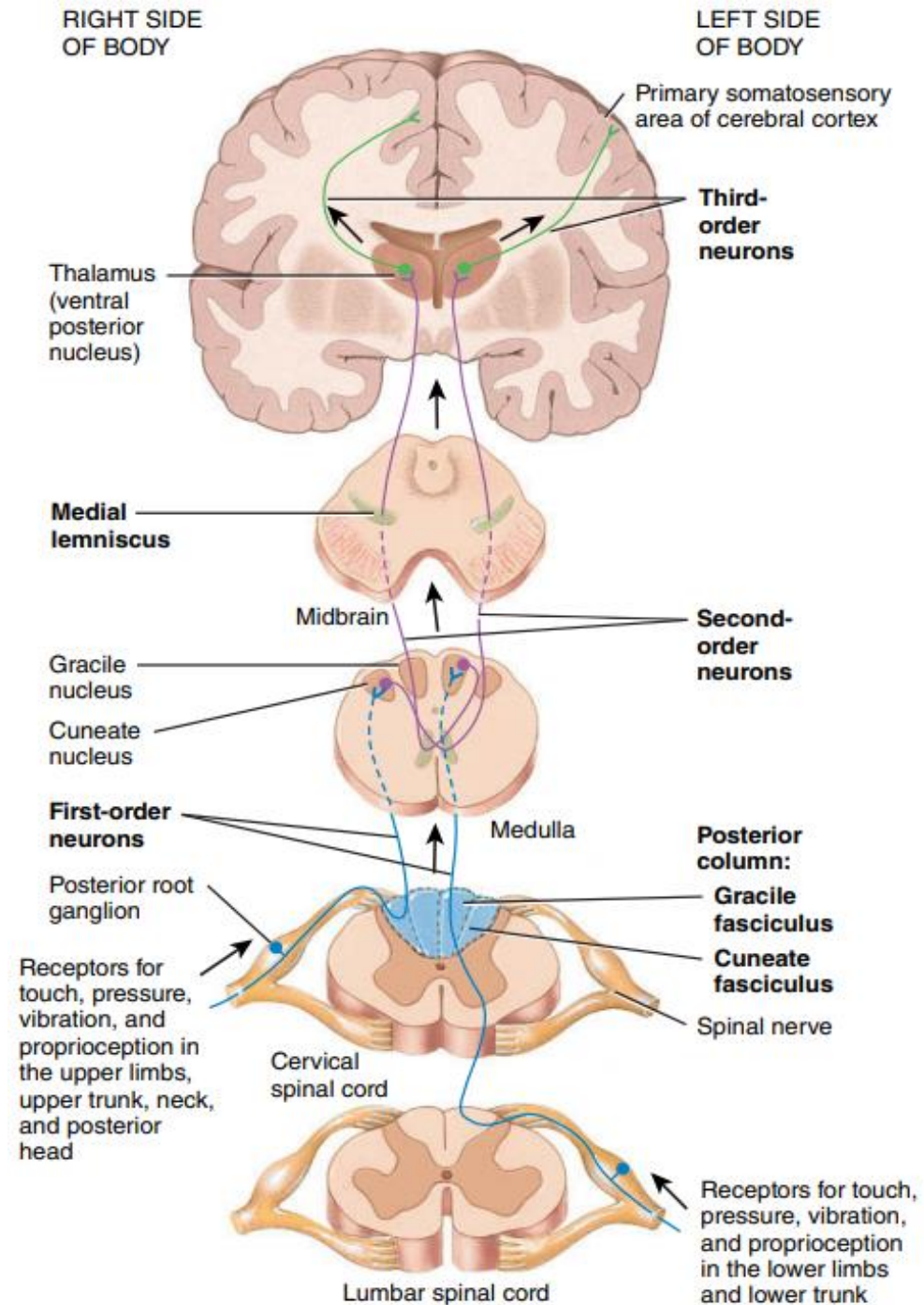
Posterior column - medial lemniscus pathway

Limbs
Trunk
Neck
Posterior head

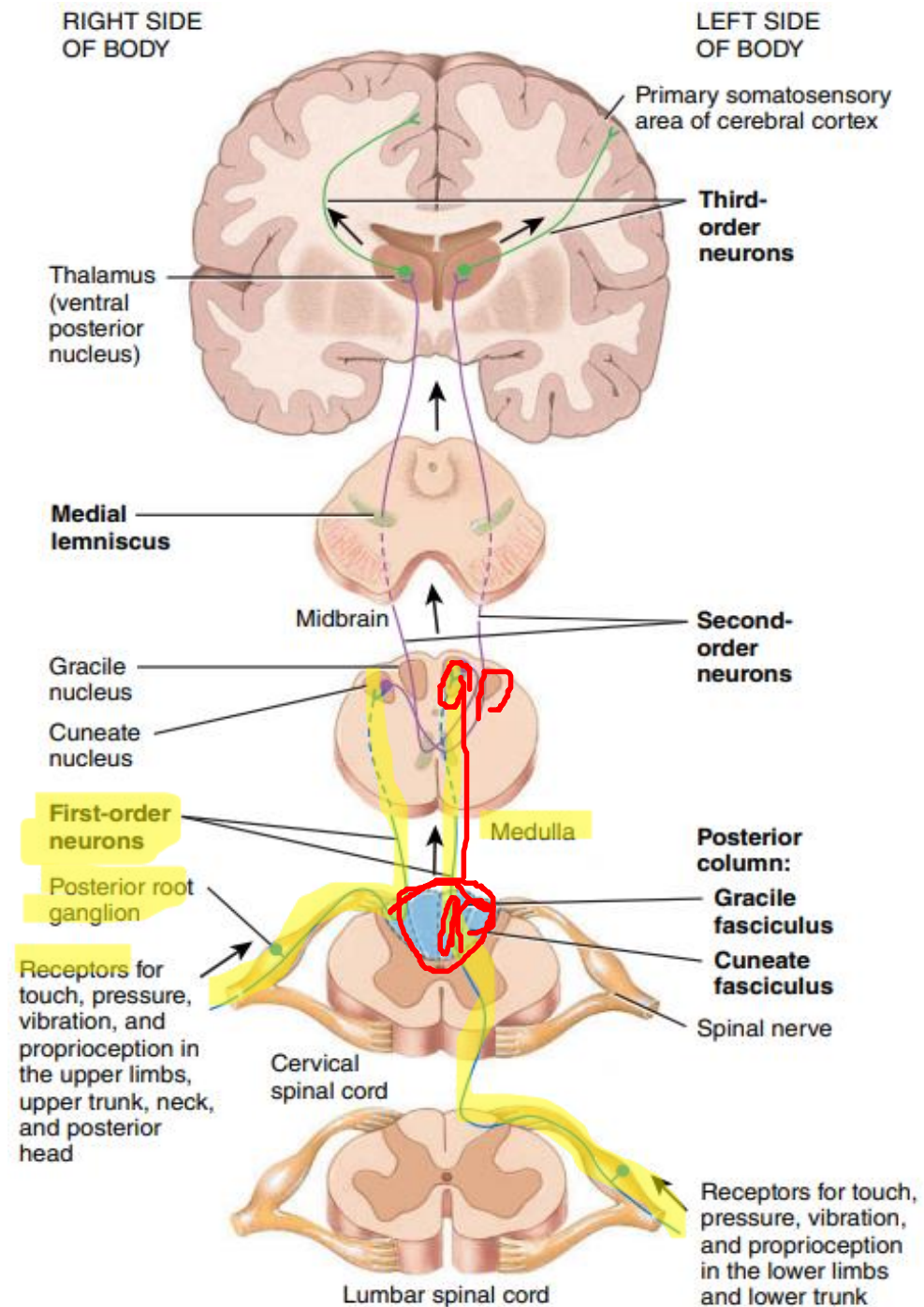


Posterior column - medial lemniscus pathway

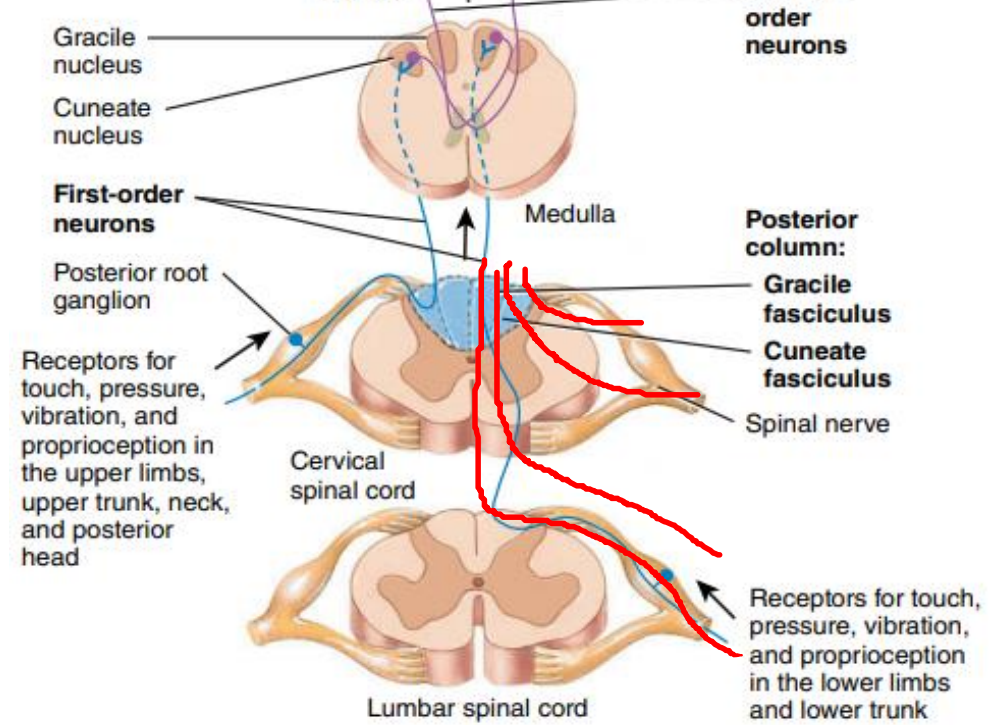
Touch (fine)
Vibration
Pressure
Proprioception



Posterior column - medial lemniscus pathway

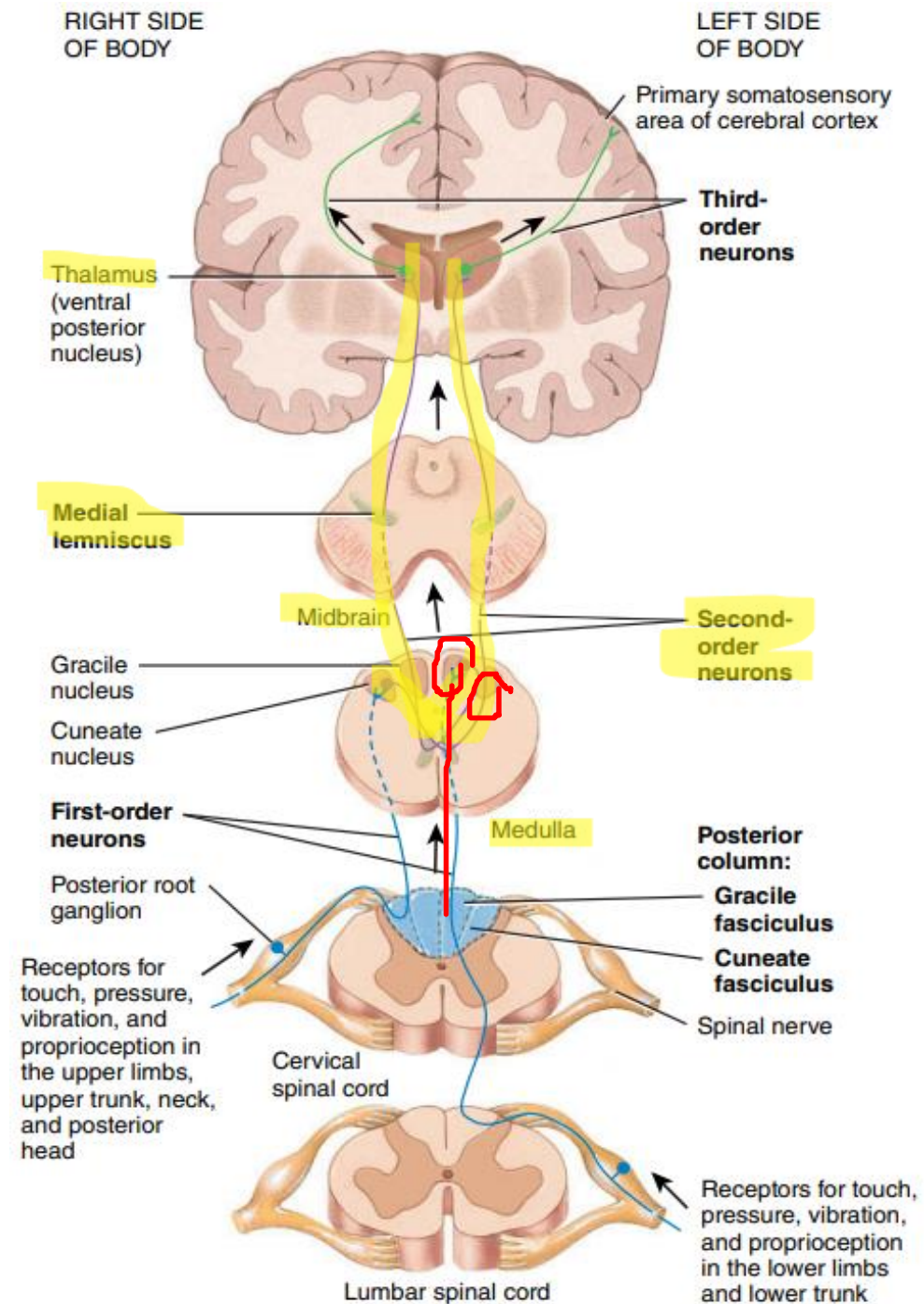


Posterior column - medial lemniscus pathway



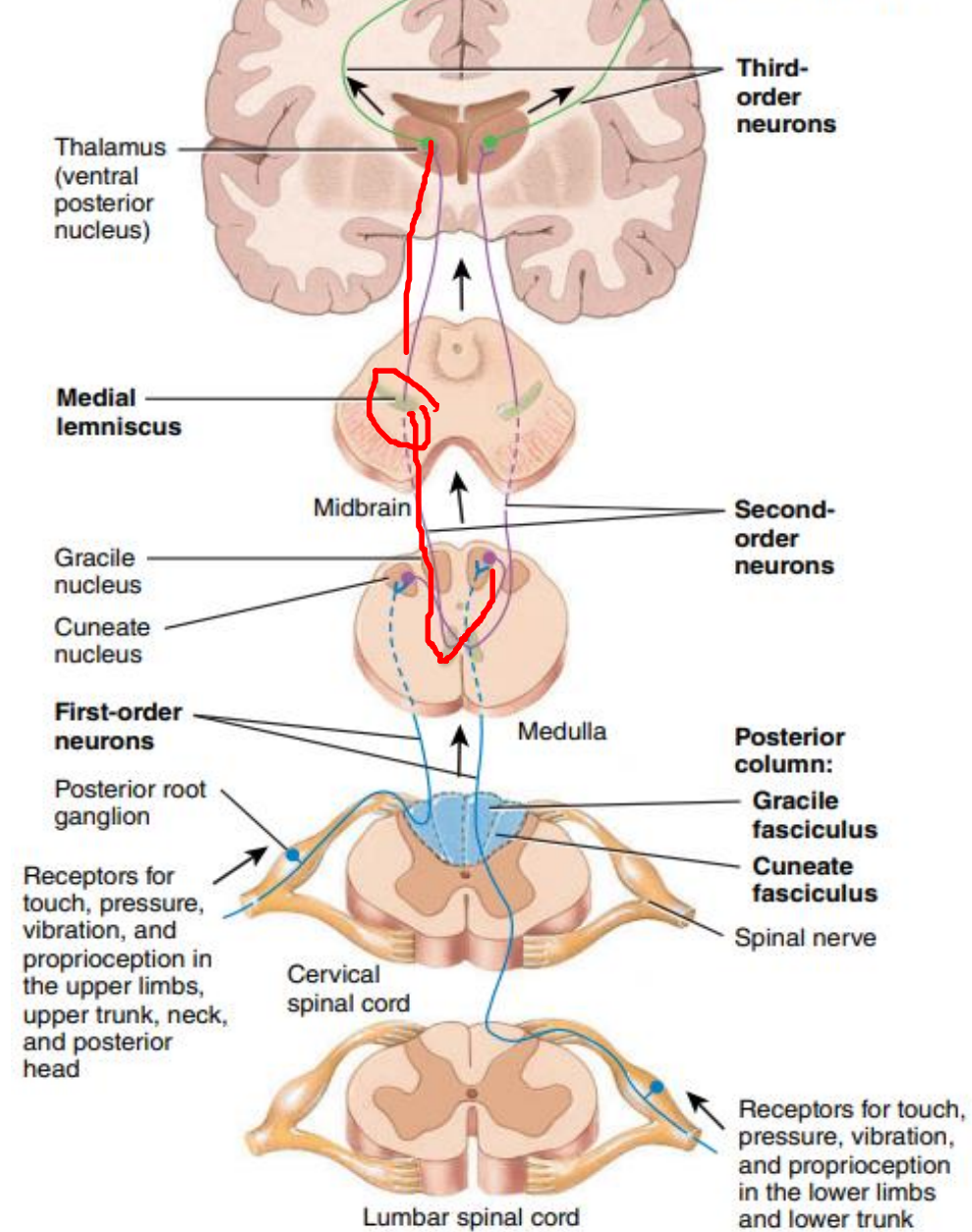
Posterior column - medial lemniscus pathway

Decussation in
the medulla

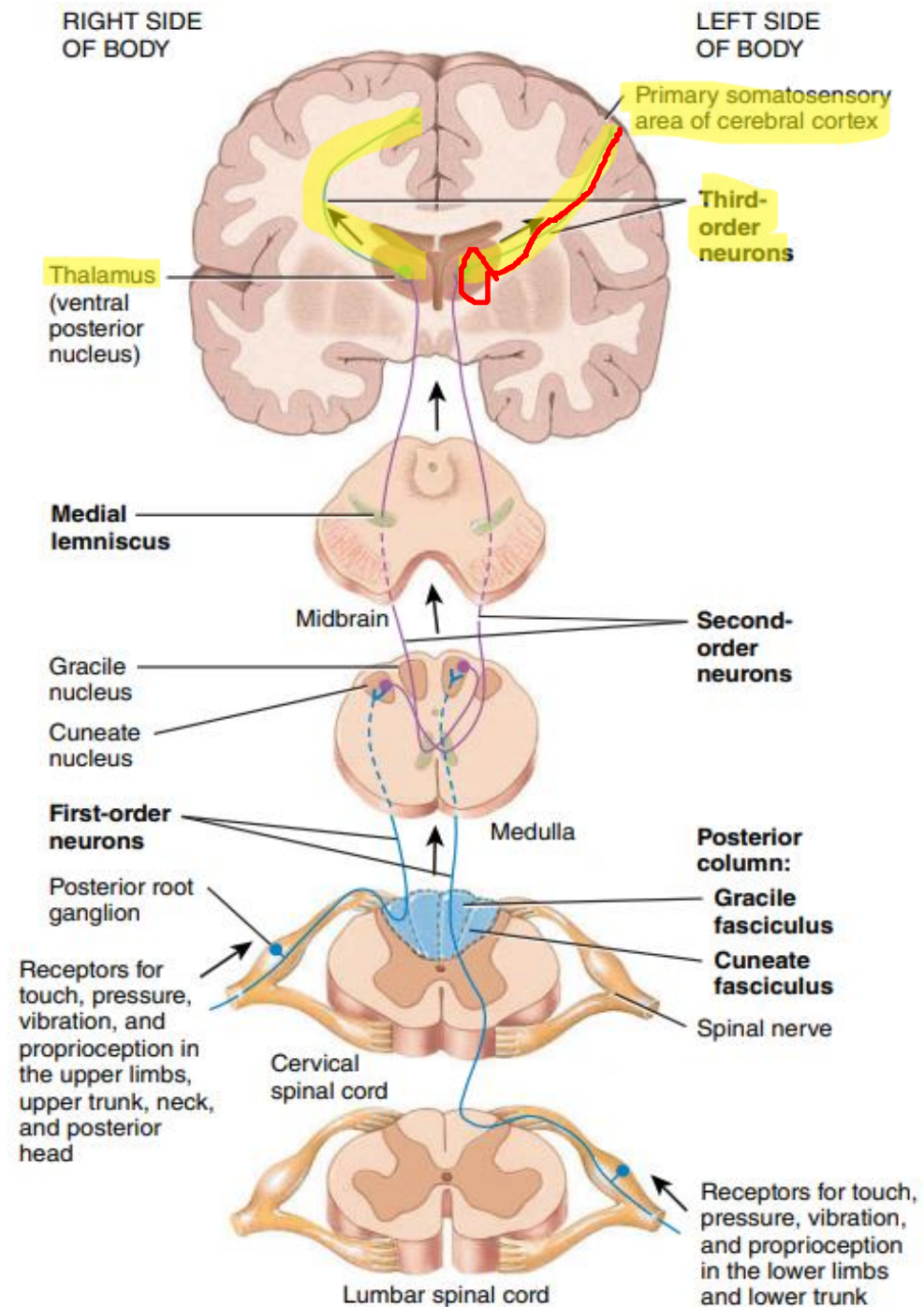


Posterior column - medial lemniscus pathway

Decussation in
the medulla

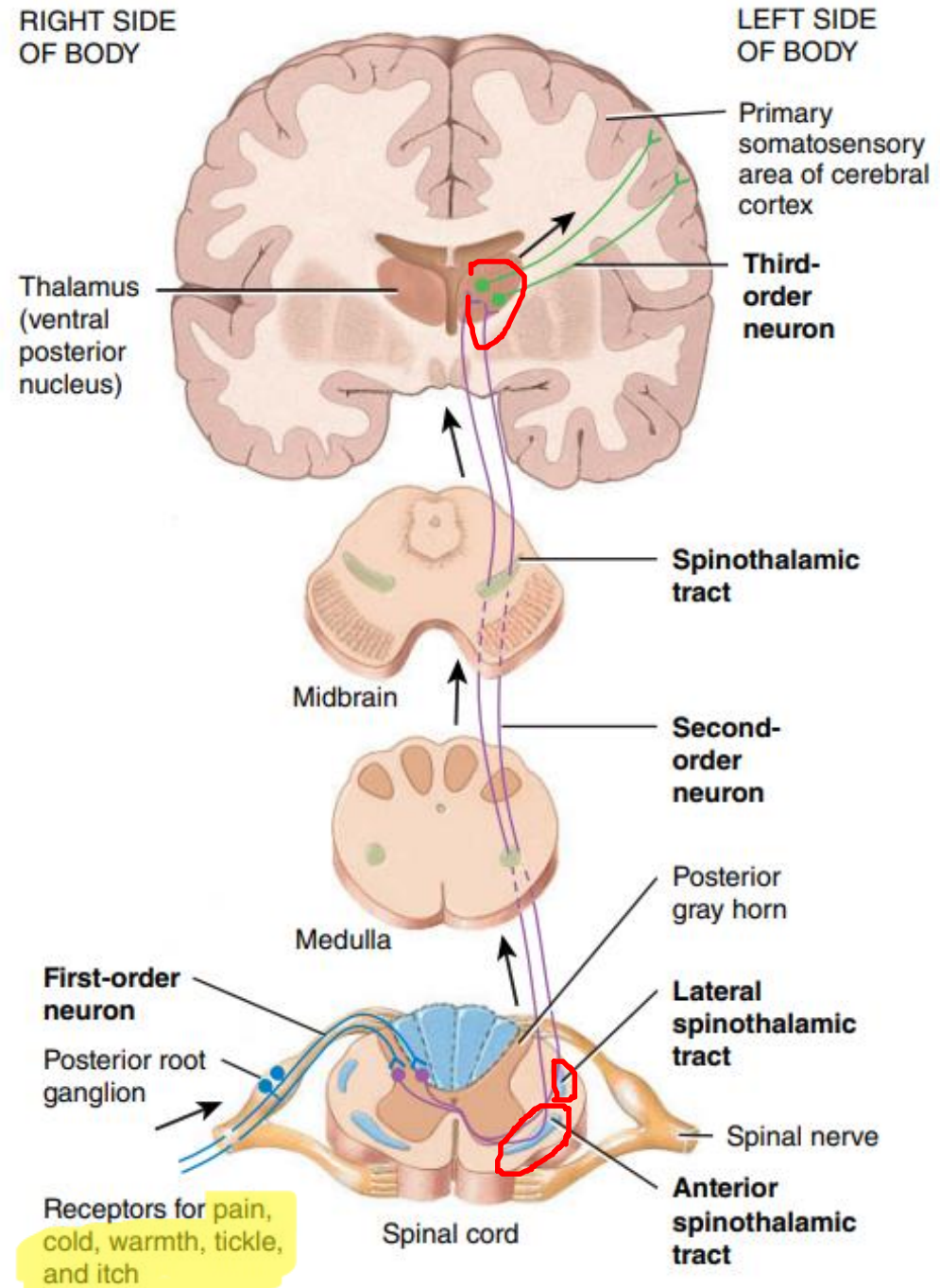


Posterior column - medial lemniscus pathway



Anterolateral spinothalamic pathway

Pain
Temperature
Itch
Tickle



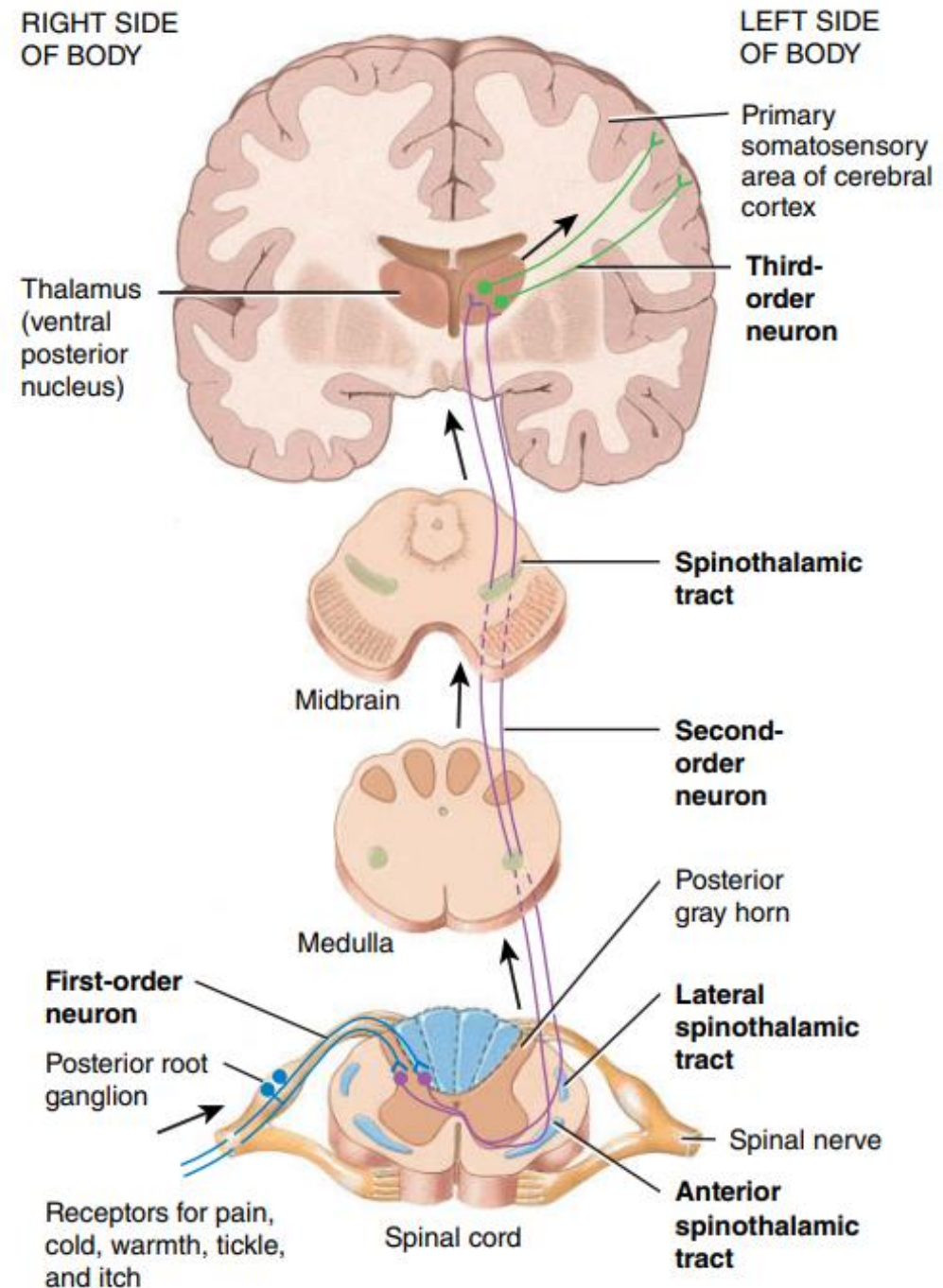
Anterolateral spinothalamic pathway

The limbs

The trunk

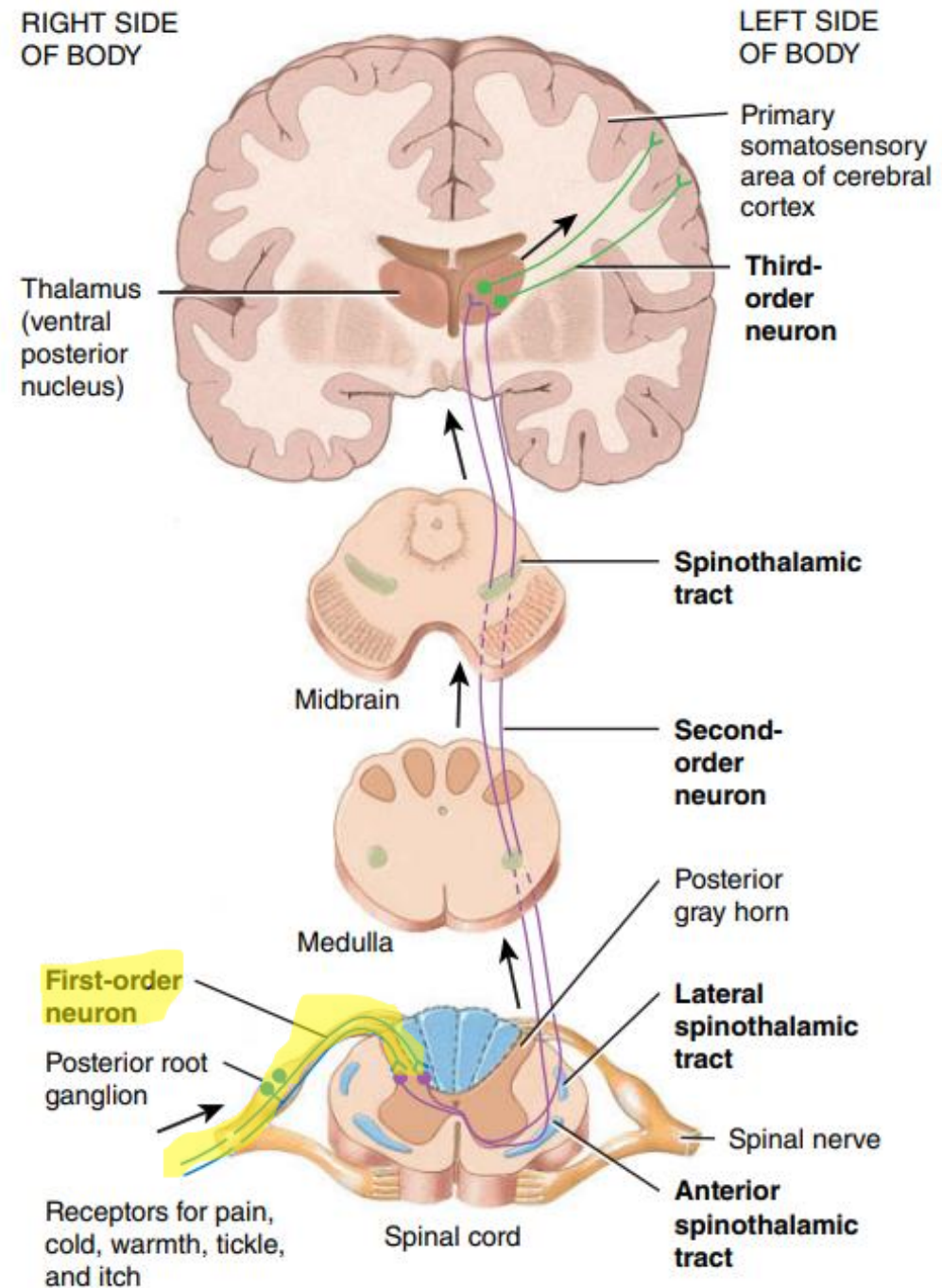
The neck

Posterior head

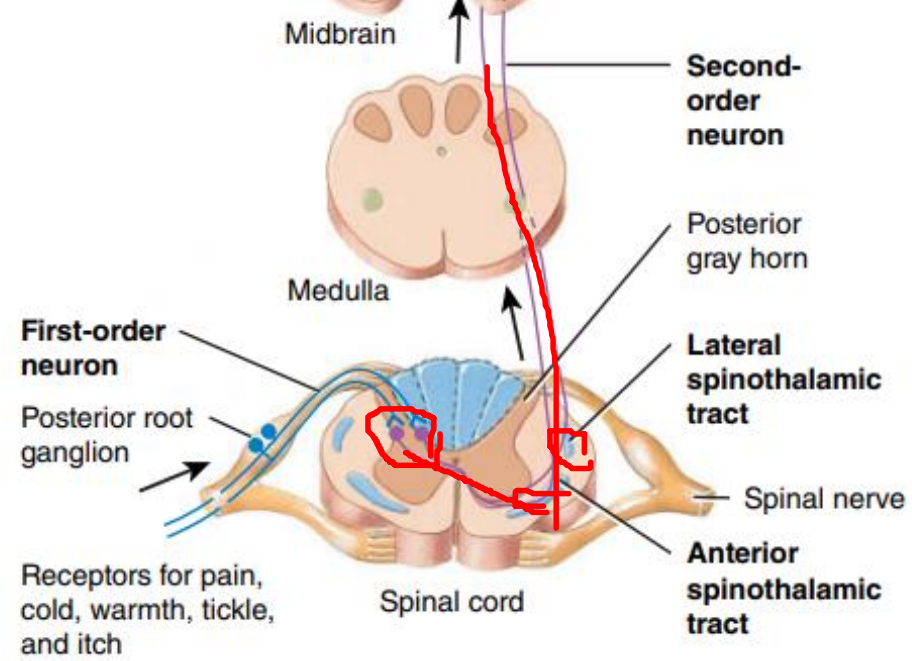


Anterolateral spinothalamic pathway

Synapse at dorsal horn of spinal gray matter

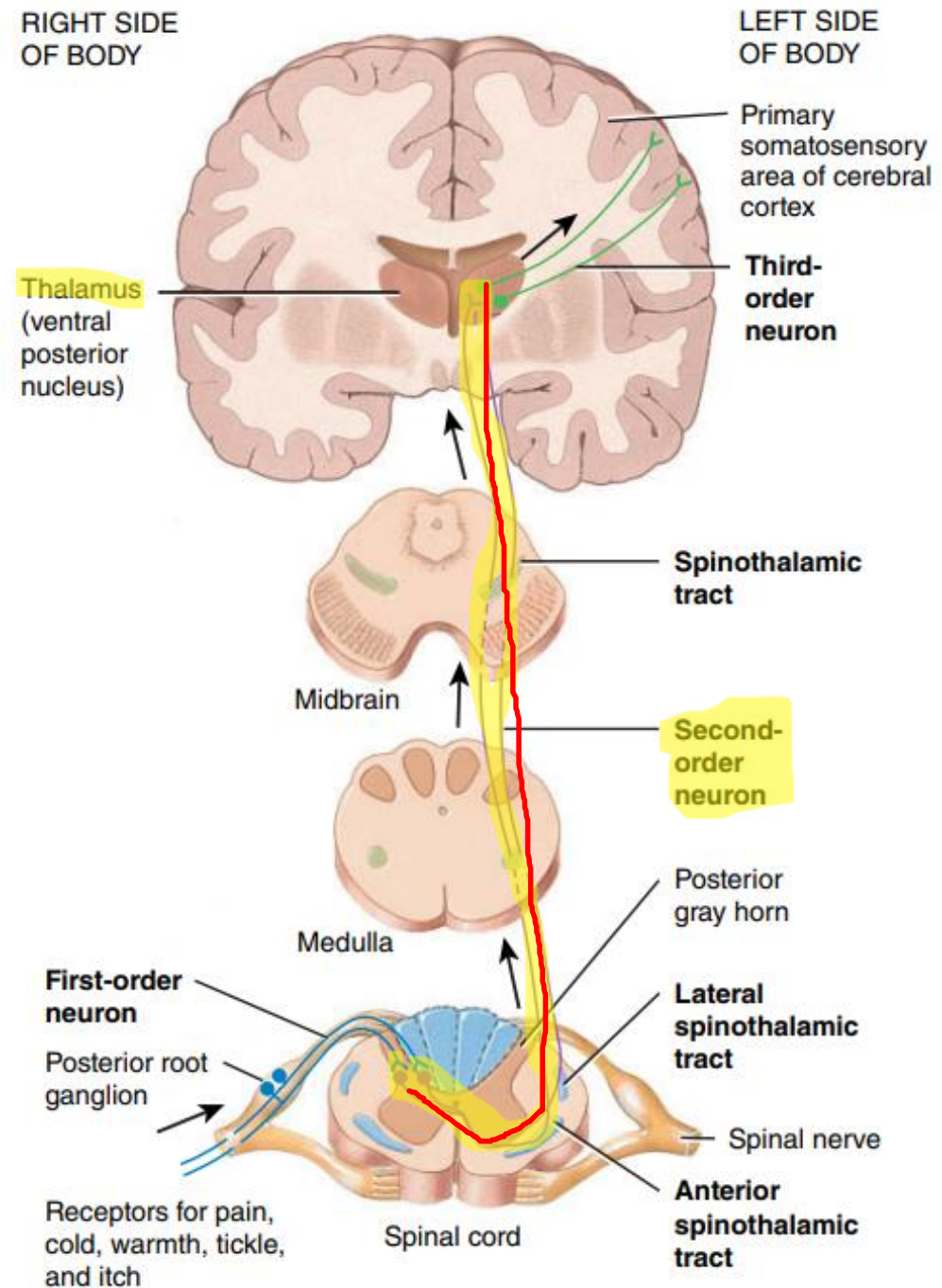


Anterolateral spinothalamic pathway



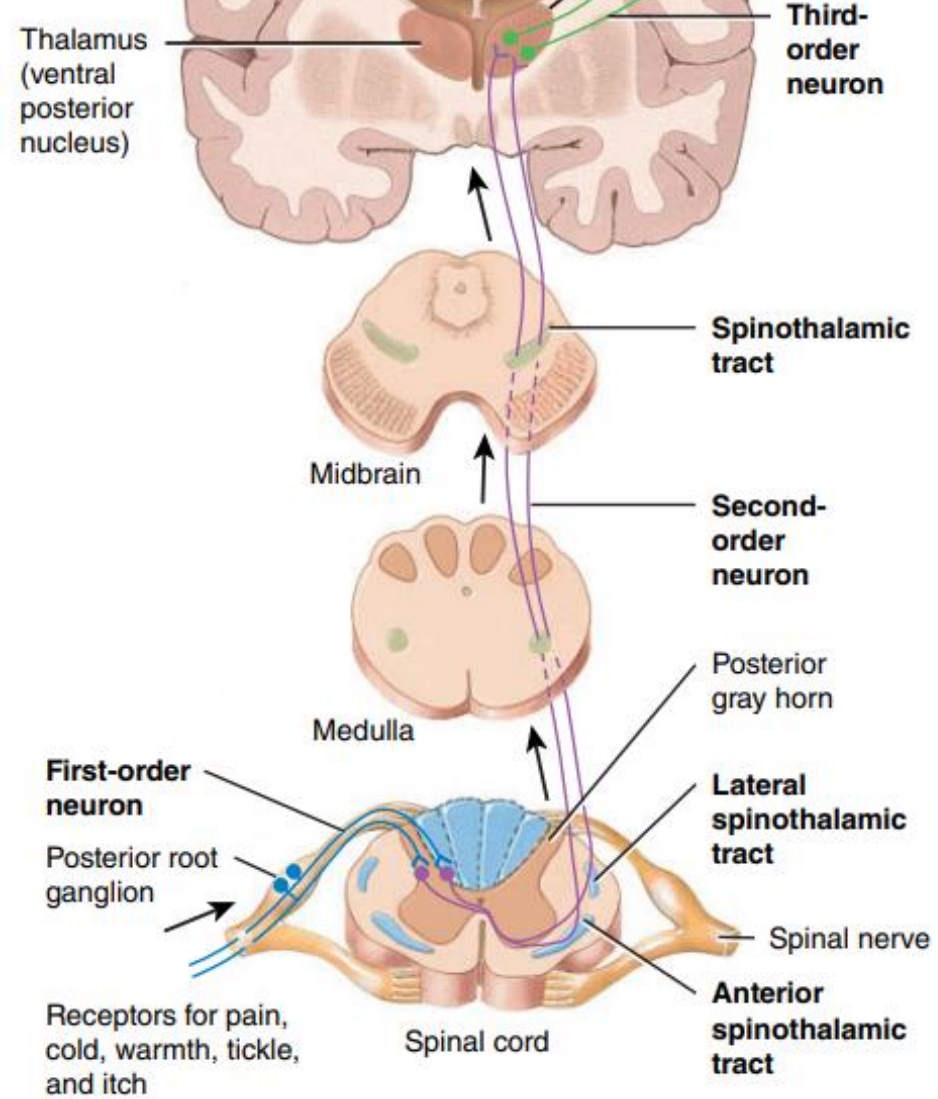
Anterolateral spinothalamic pathway

Decussation in spinal cord

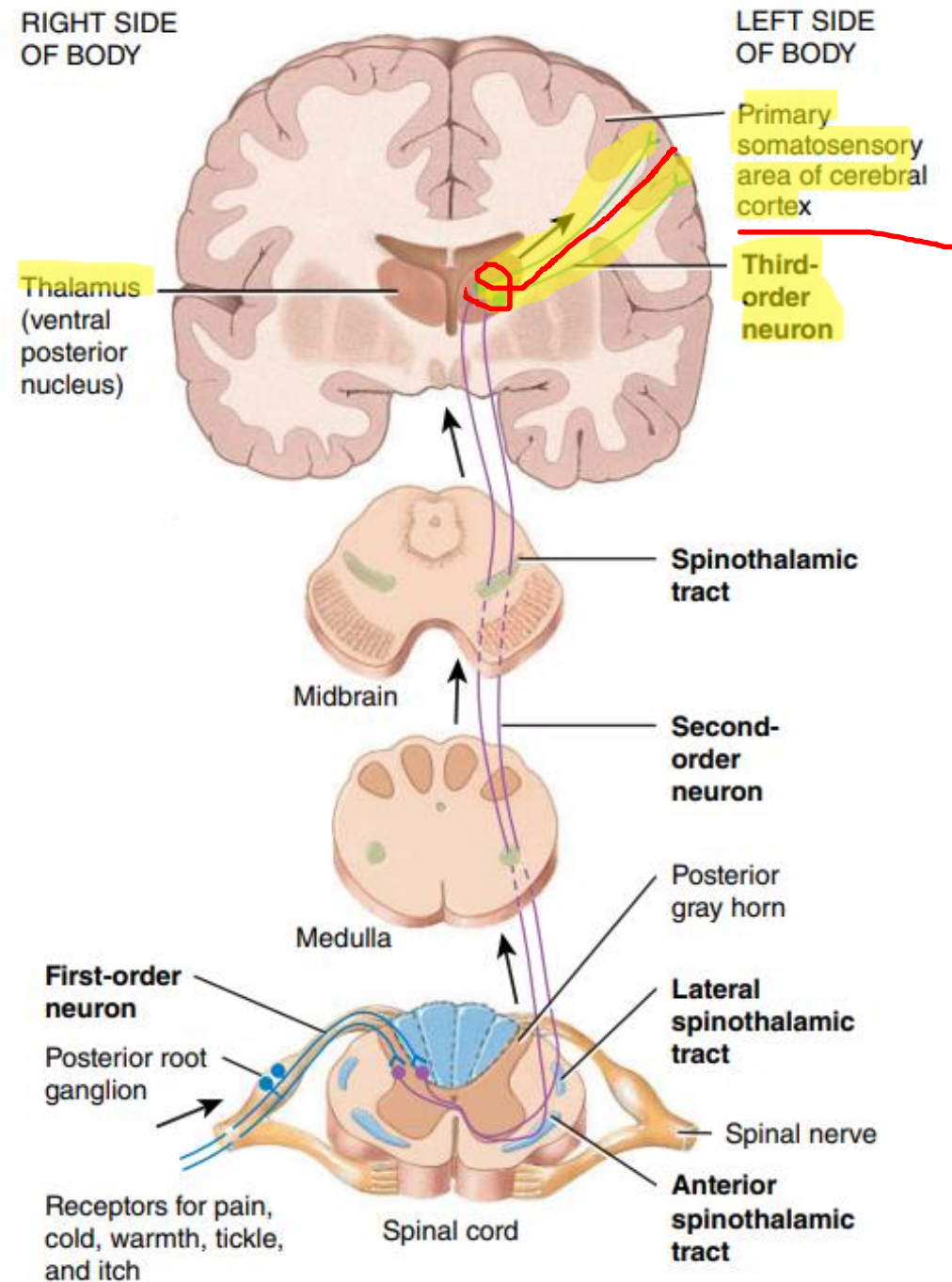


Anterolateral spinothalamic pathway

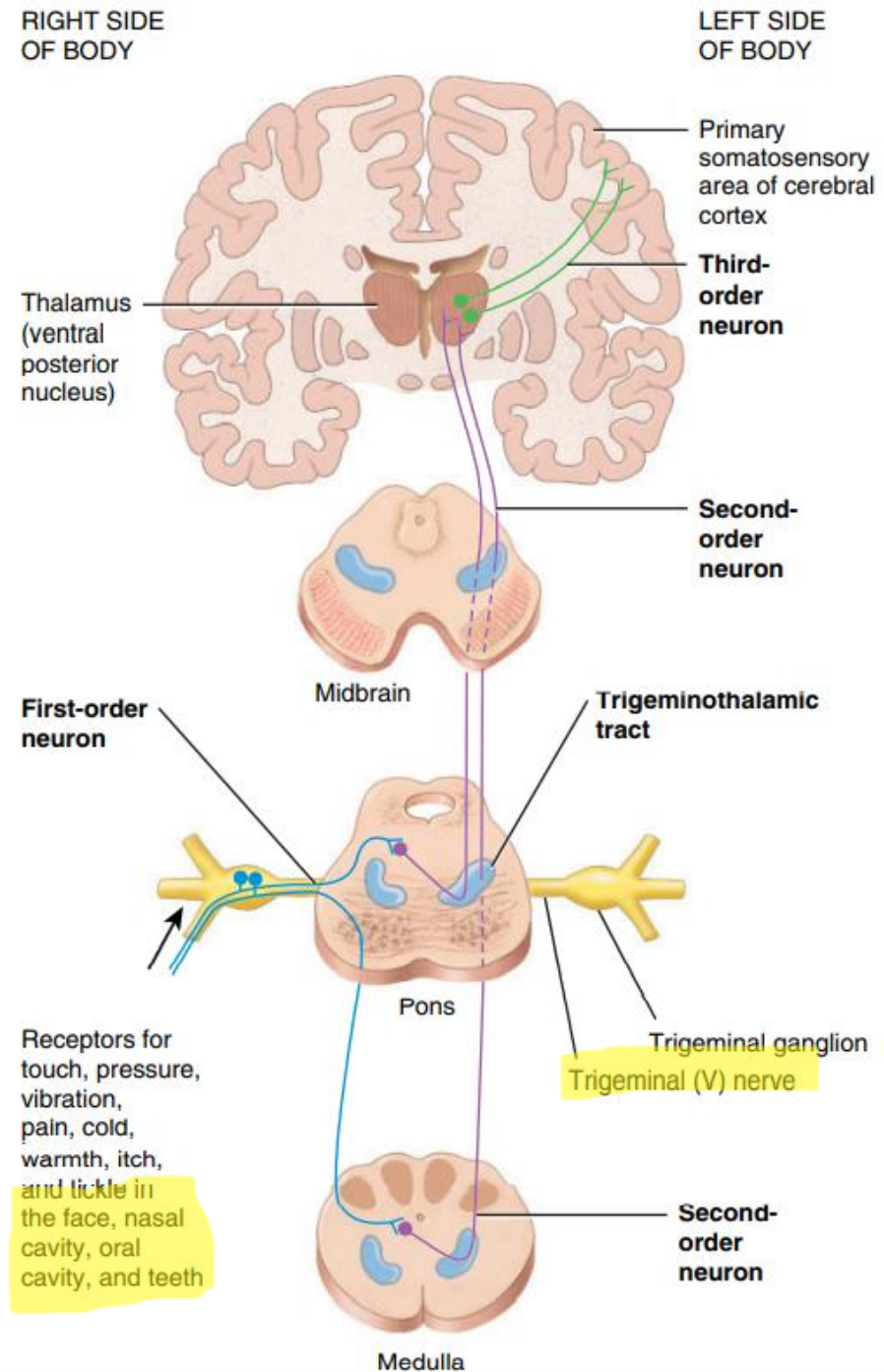
Decussation in spinal cord



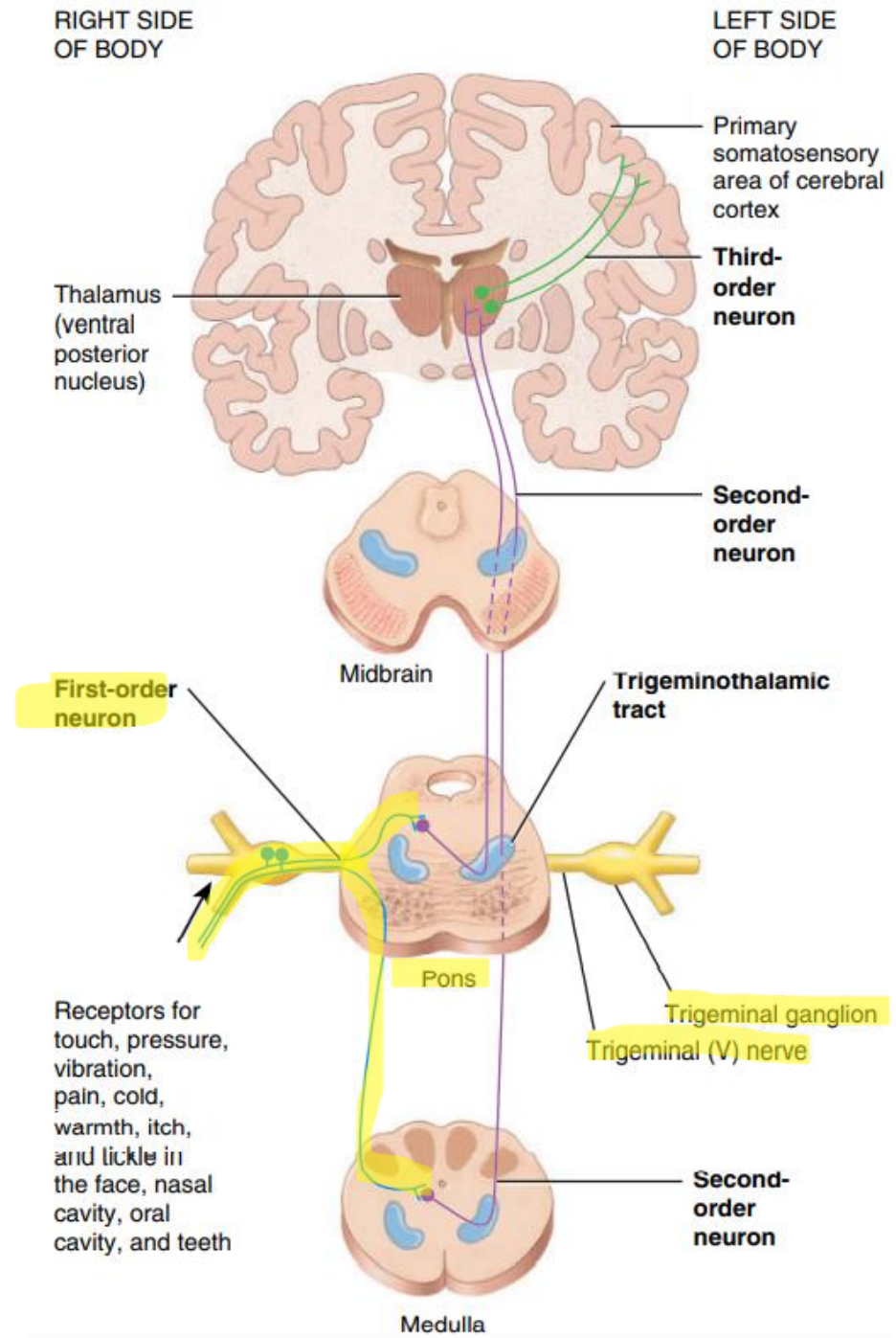
Anterolateral spinothalamic pathway



Trigeminothalamic pathway

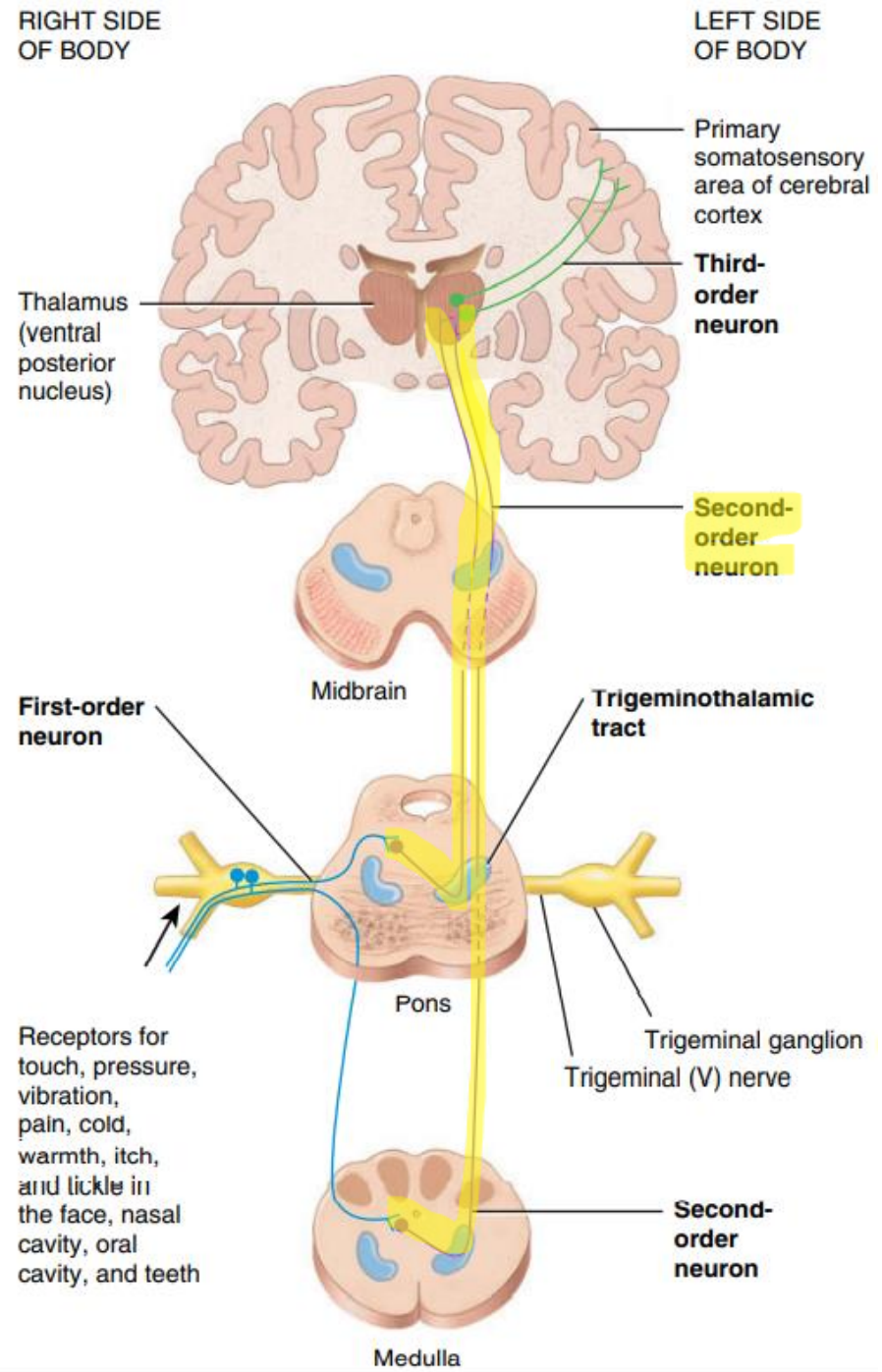


Trigeminothalamic pathway

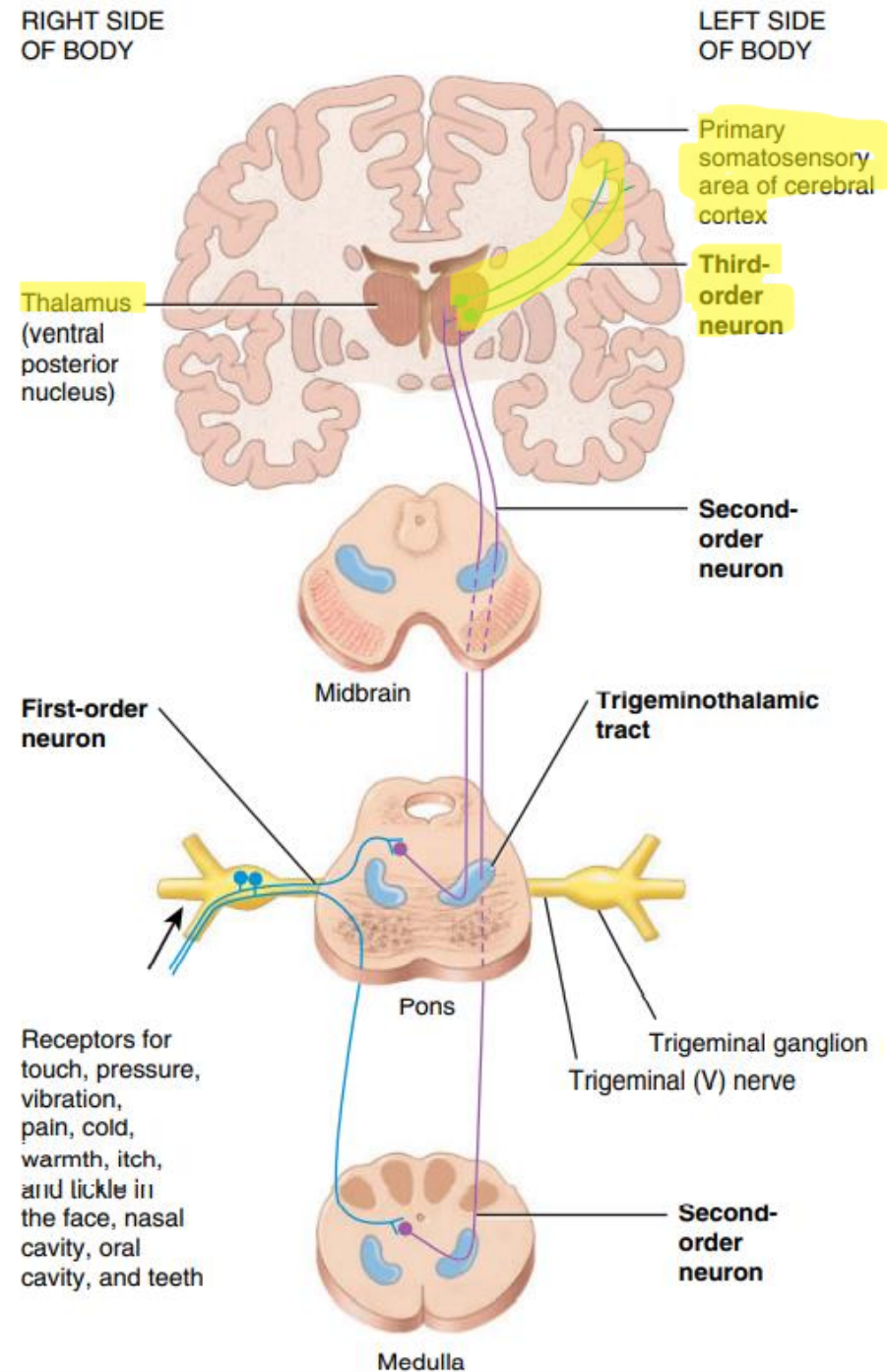


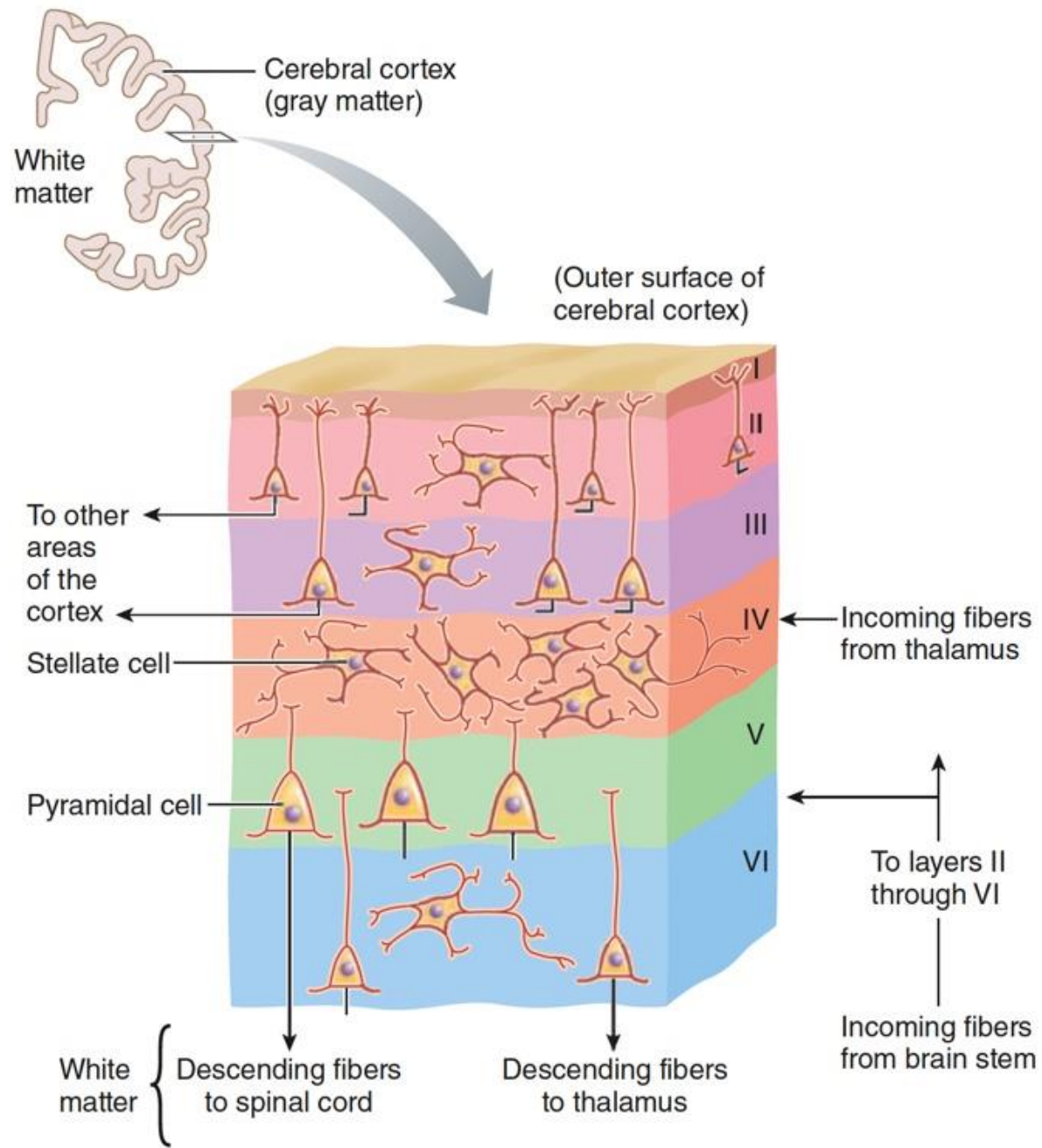
Trigeminothalamic pathway

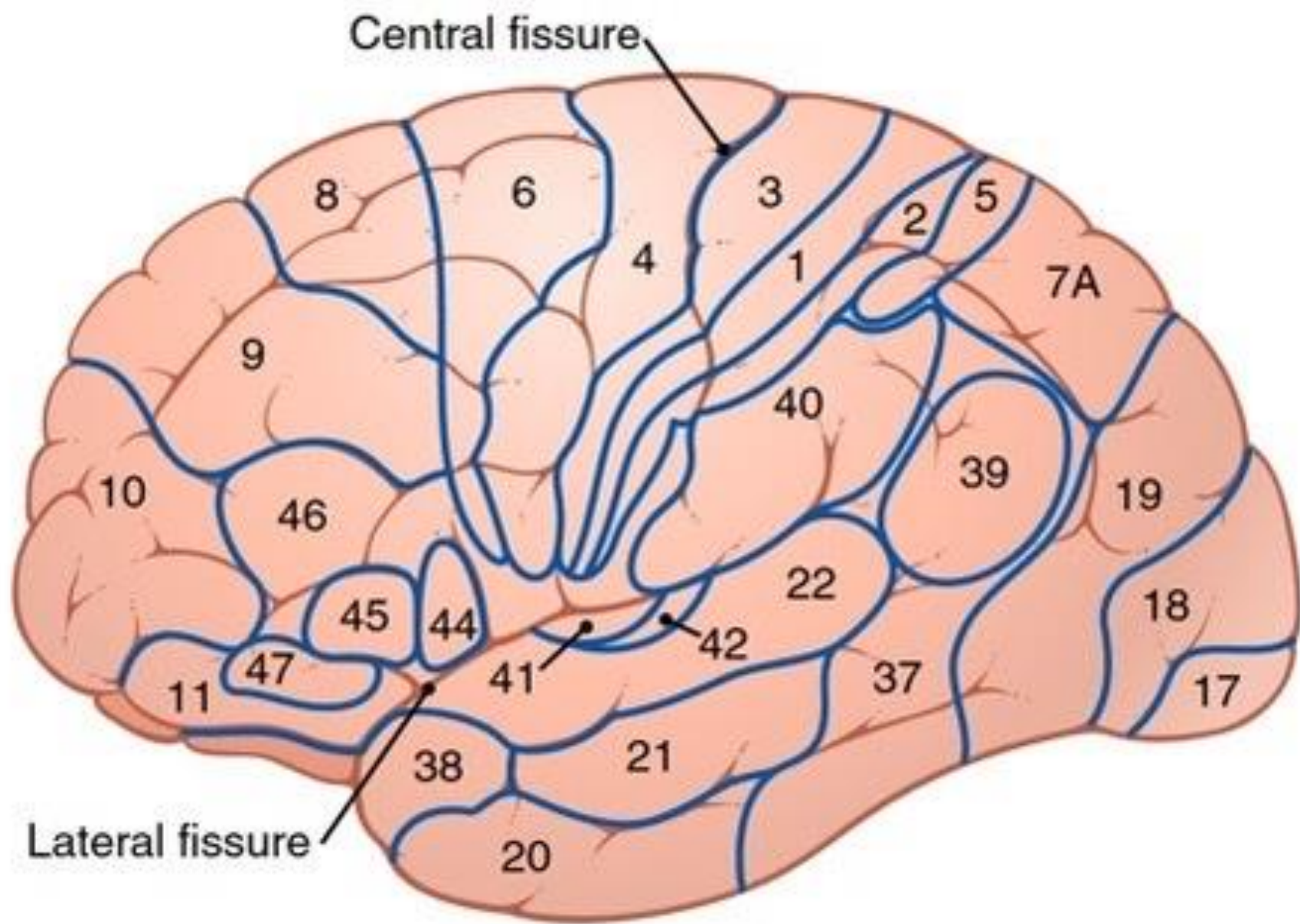
Decussation

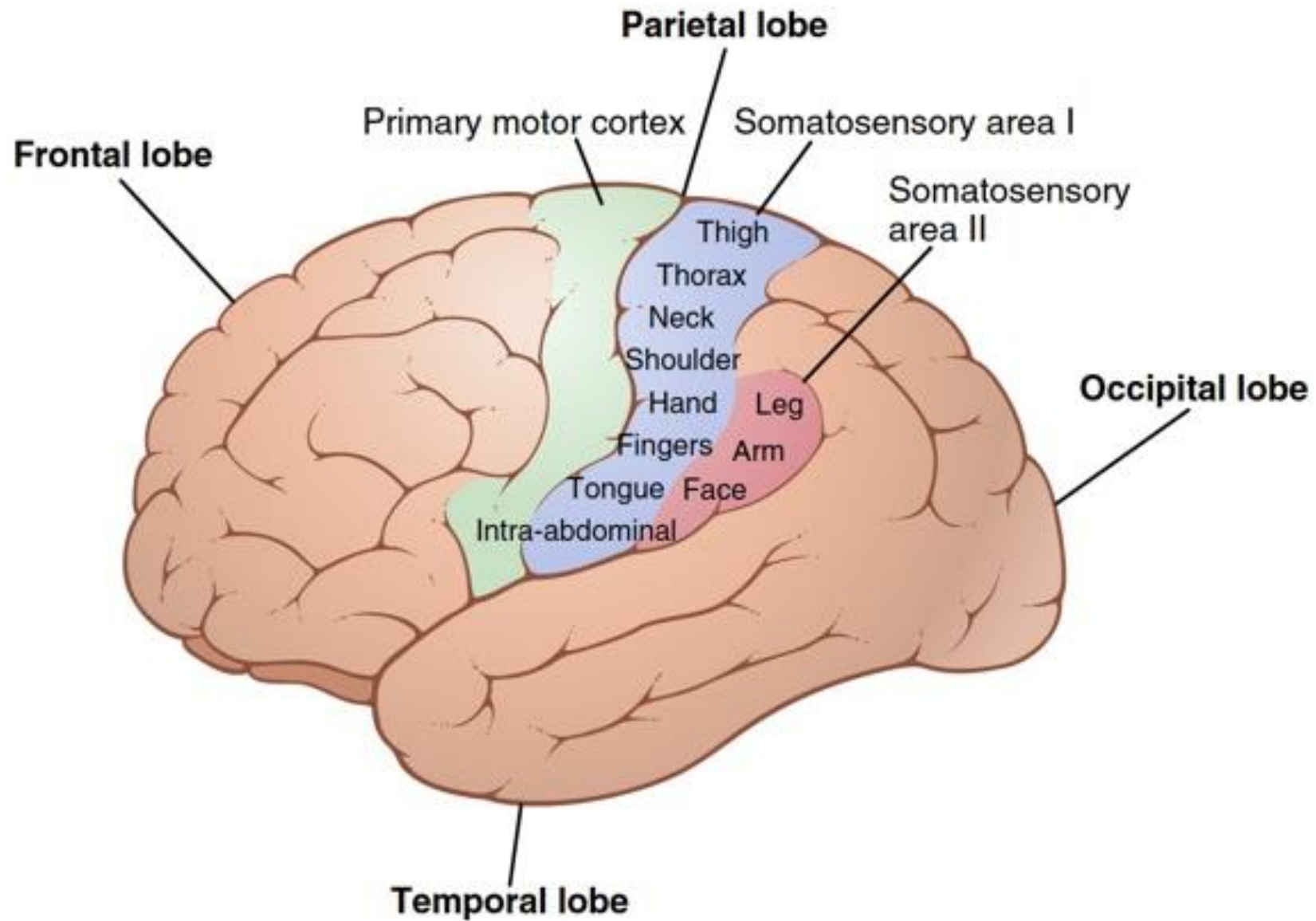


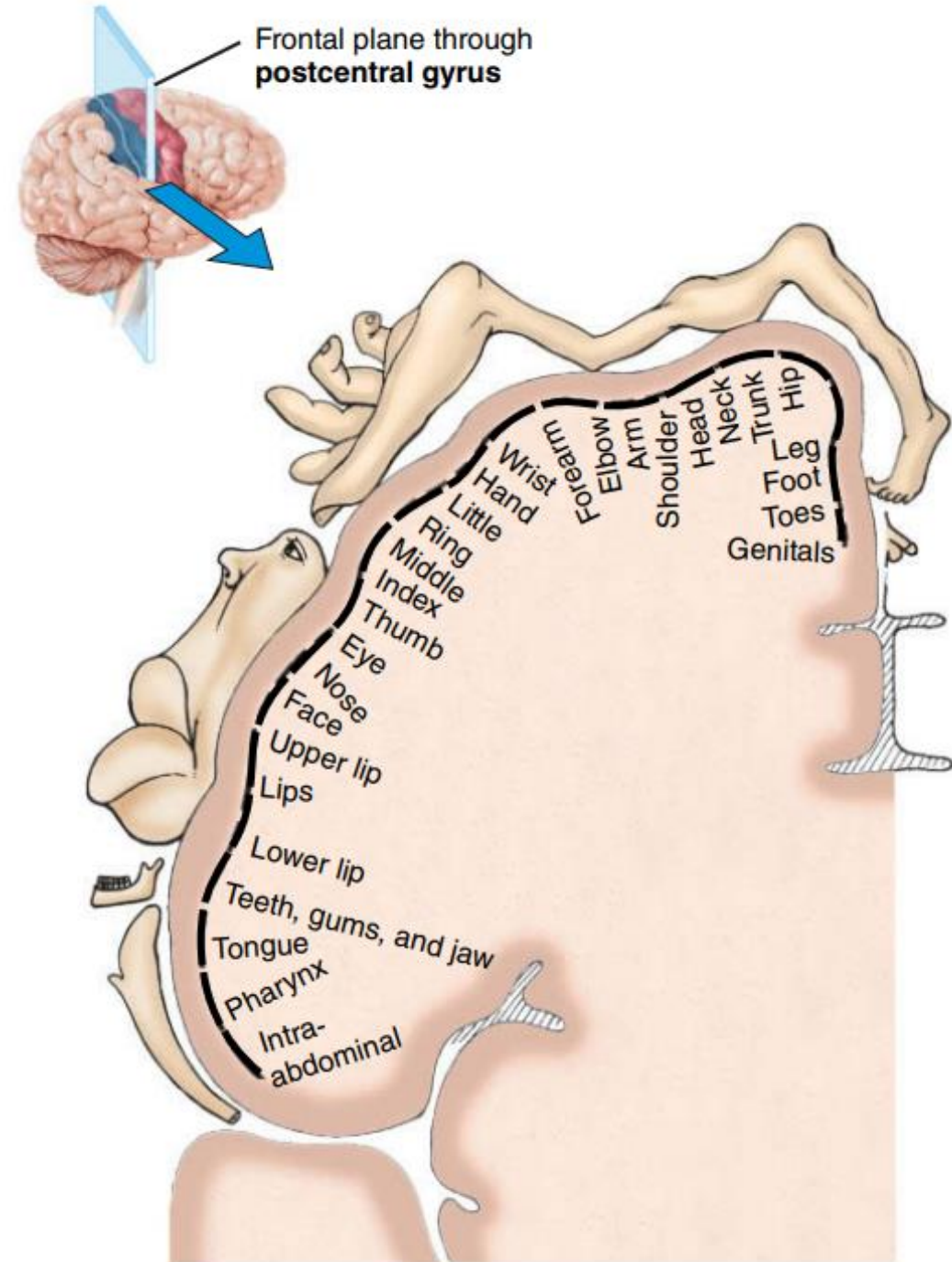
Trigeminothalamic pathway



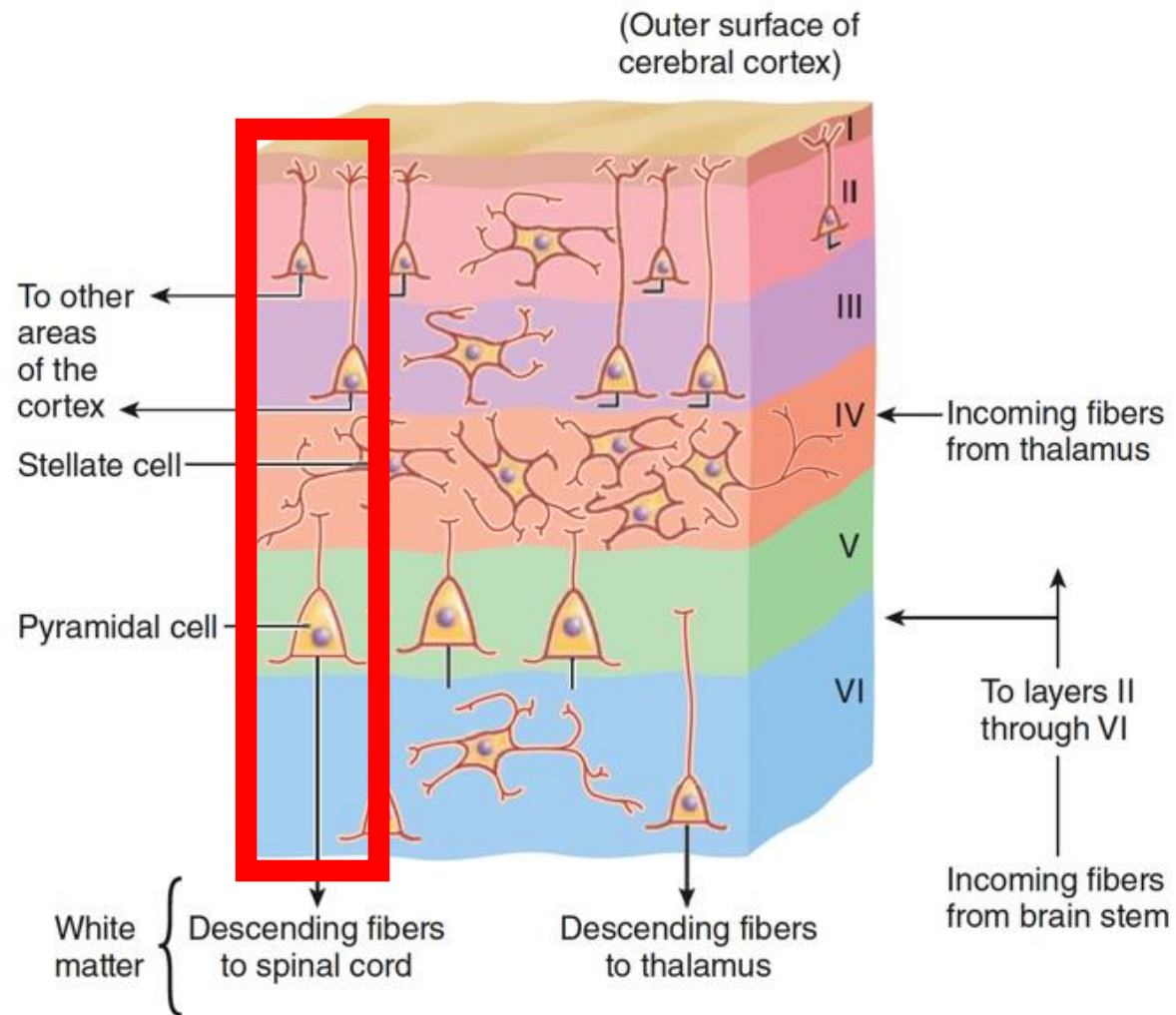


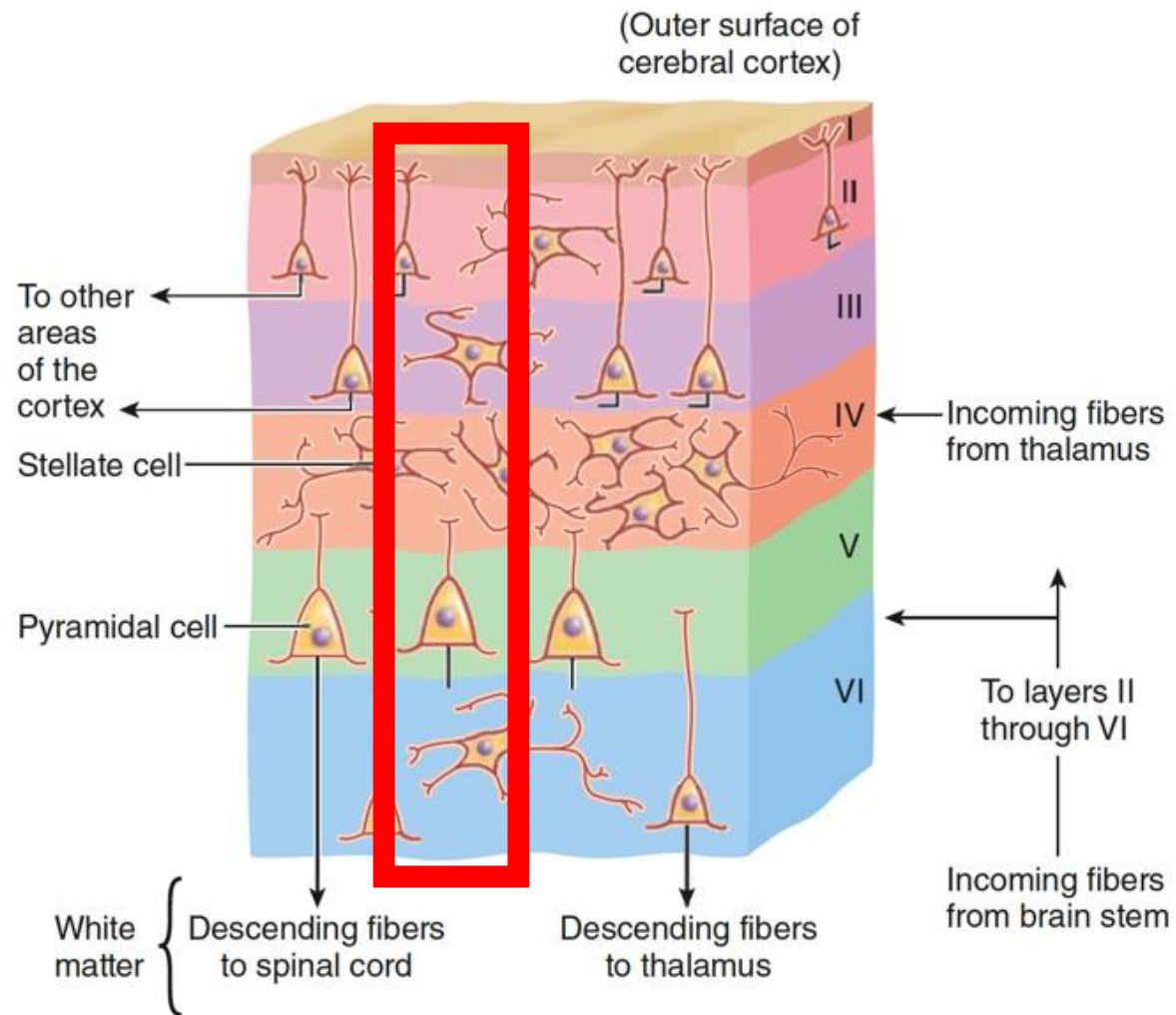


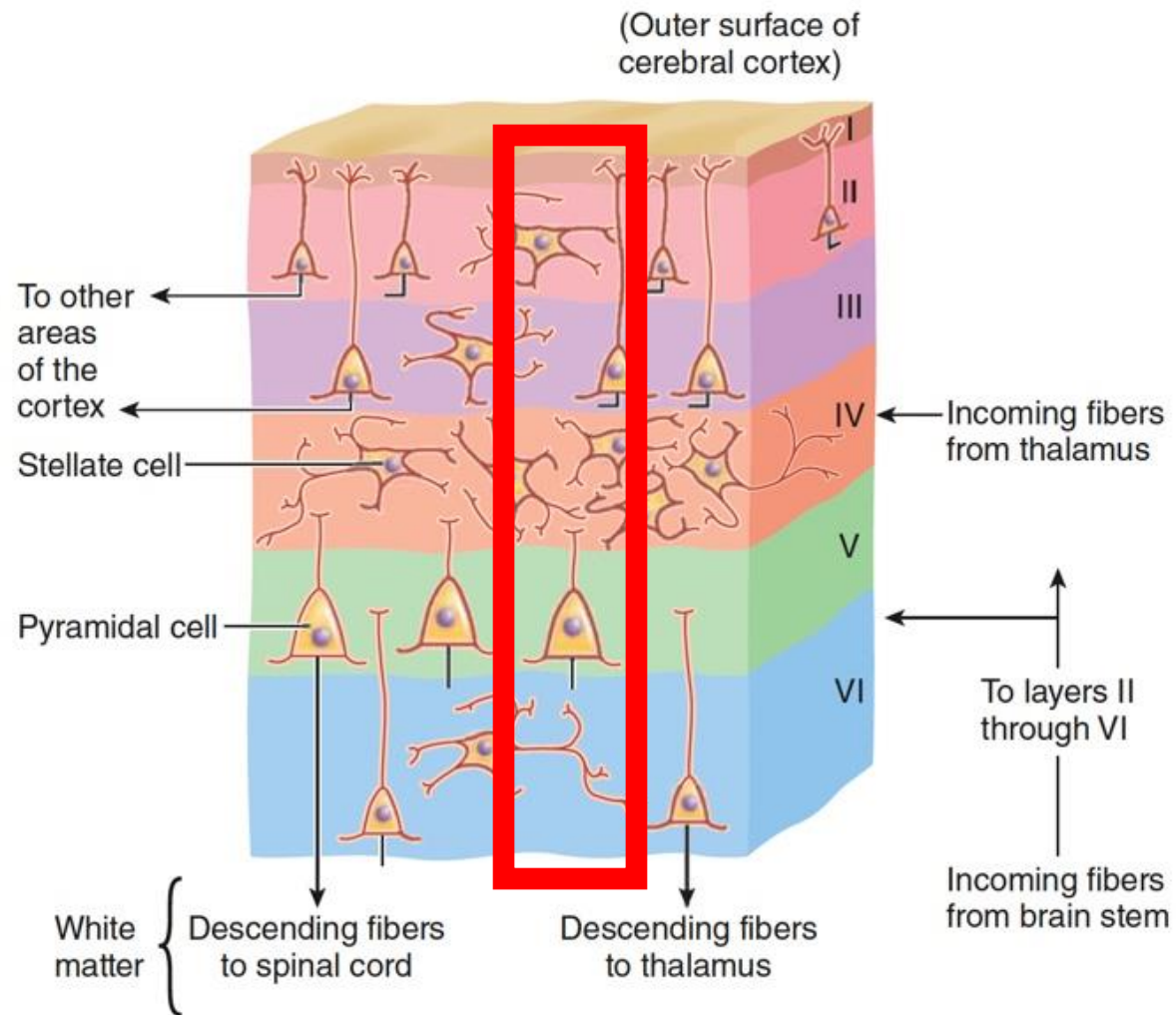




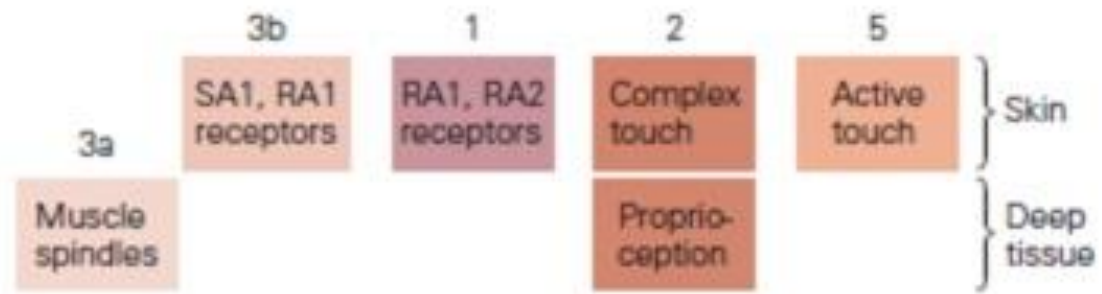
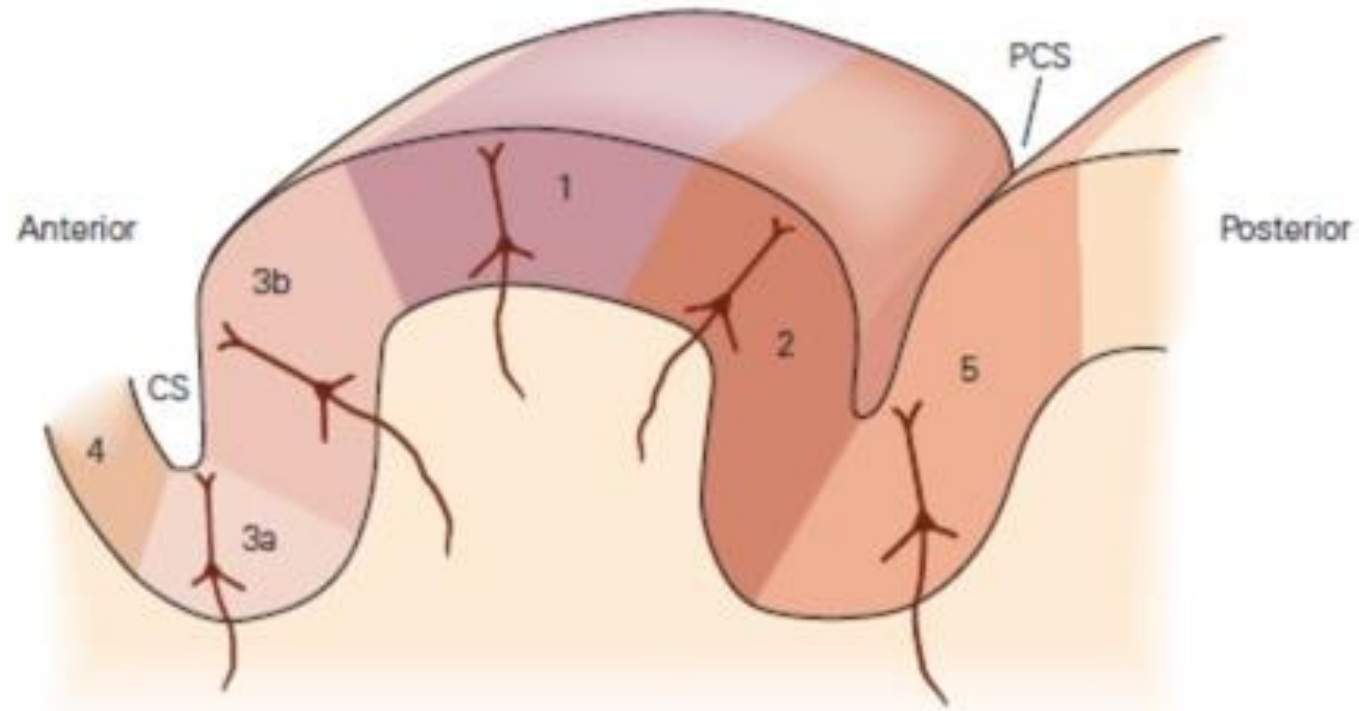
The left cerebral hemisphere receives sensory input from the right side of the body

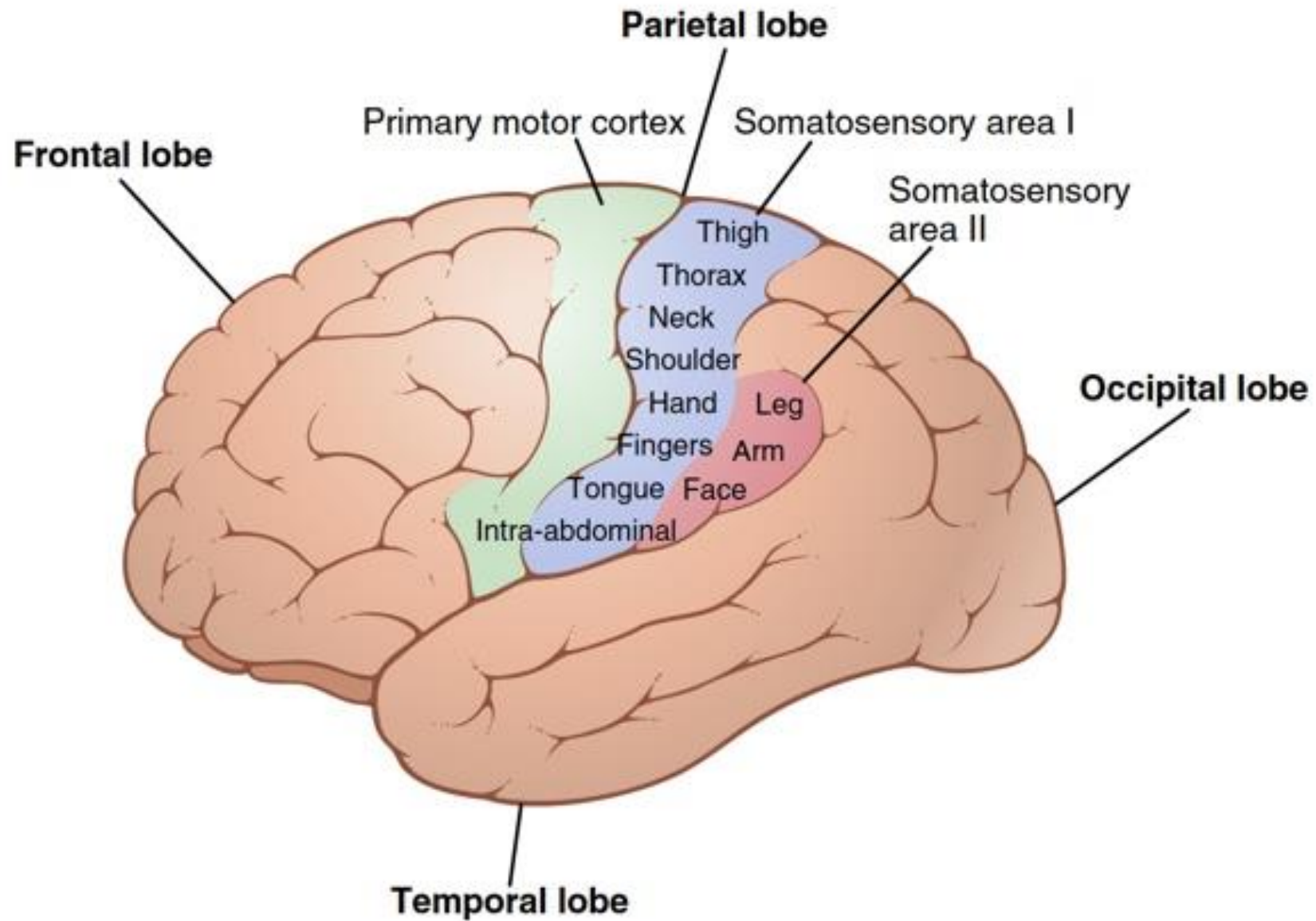


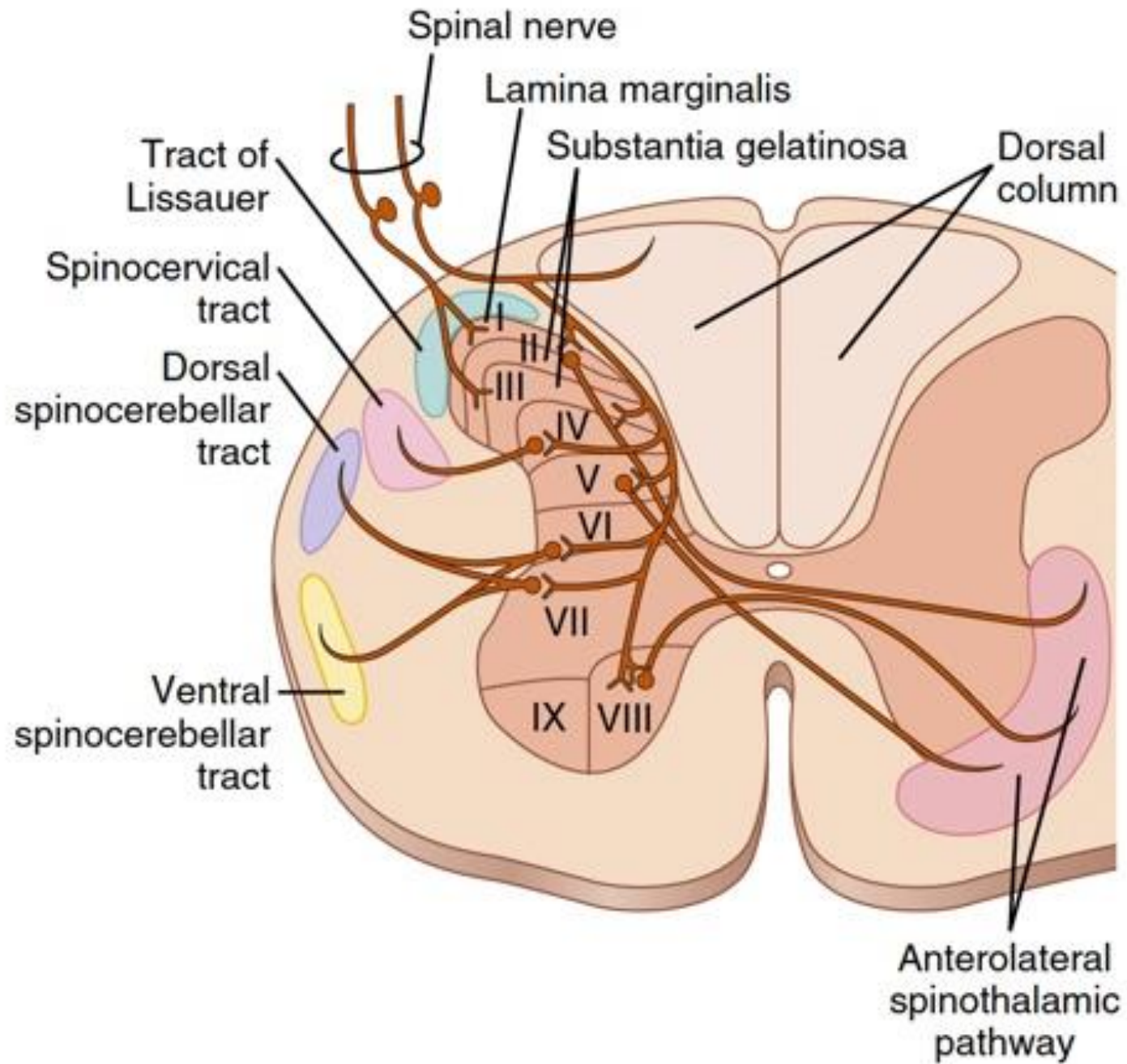




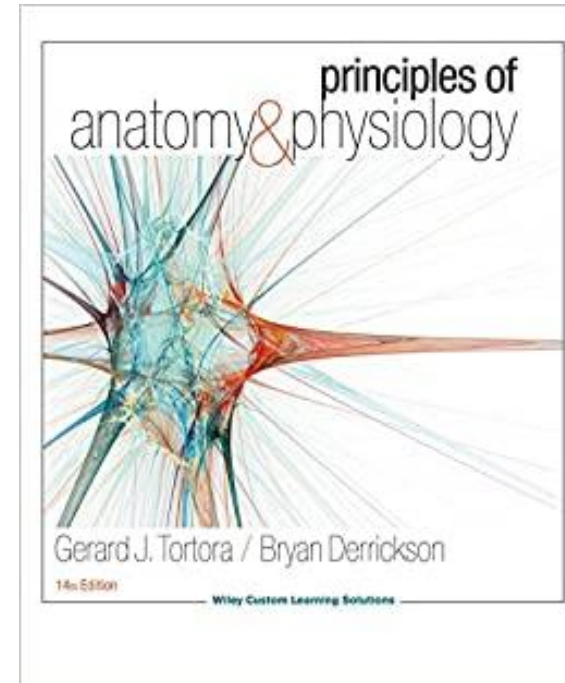
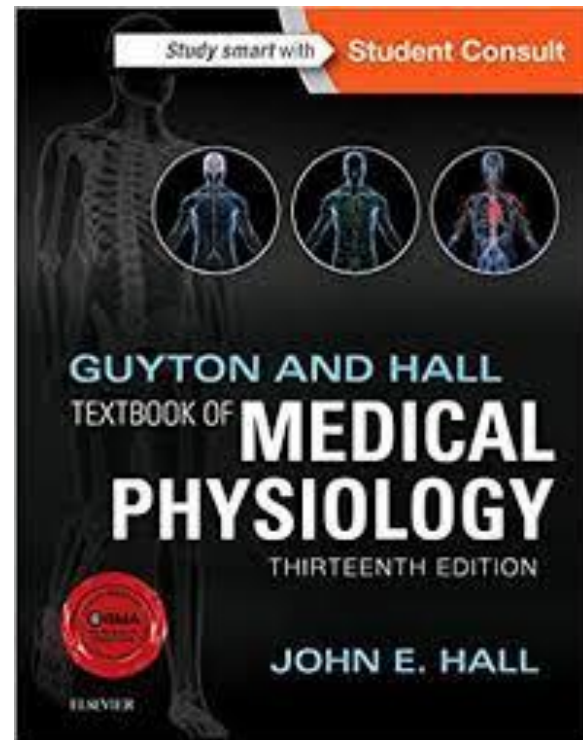
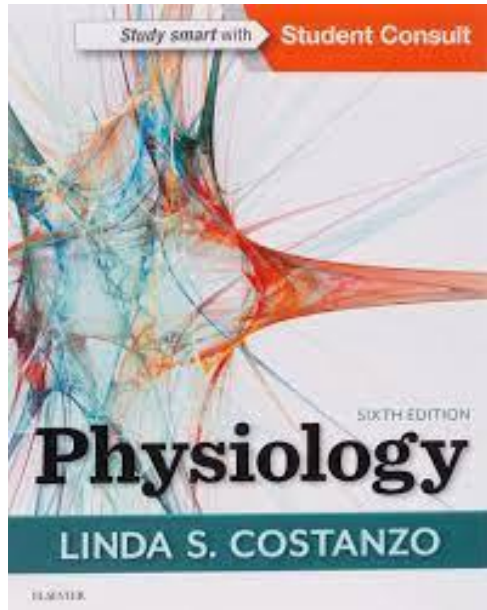
A Inputs to areas of primary somatic sensory cortex







References



9TH
Edition

Human Physiology From Cells to Systems

Lauralee Sherwood
Department of Physiology and Pharmacology
School of Medicine
West Virginia University

CENGAGE
Learning

Australia • Brazil • Mexico • Singapore • United Kingdom • United States

Copyright 2011 Cengage Learning. All Rights Reserved. May not be copied, scanned, or duplicated, in whole or in part. This no-distribution rights, even third party content may be suppressed from the eBook and/or eChapter(s). Editorial review has deemed that any suppressed content does not materially affect the overall learning experience. Cengage Learning reserves the right to remove additional content at any time if subsequent rights restrictions require it.

Thank you