

Systematic Interpretation of Chest X-Ray (CXR)

Prepared for: 4th & 6th Year Medical Students

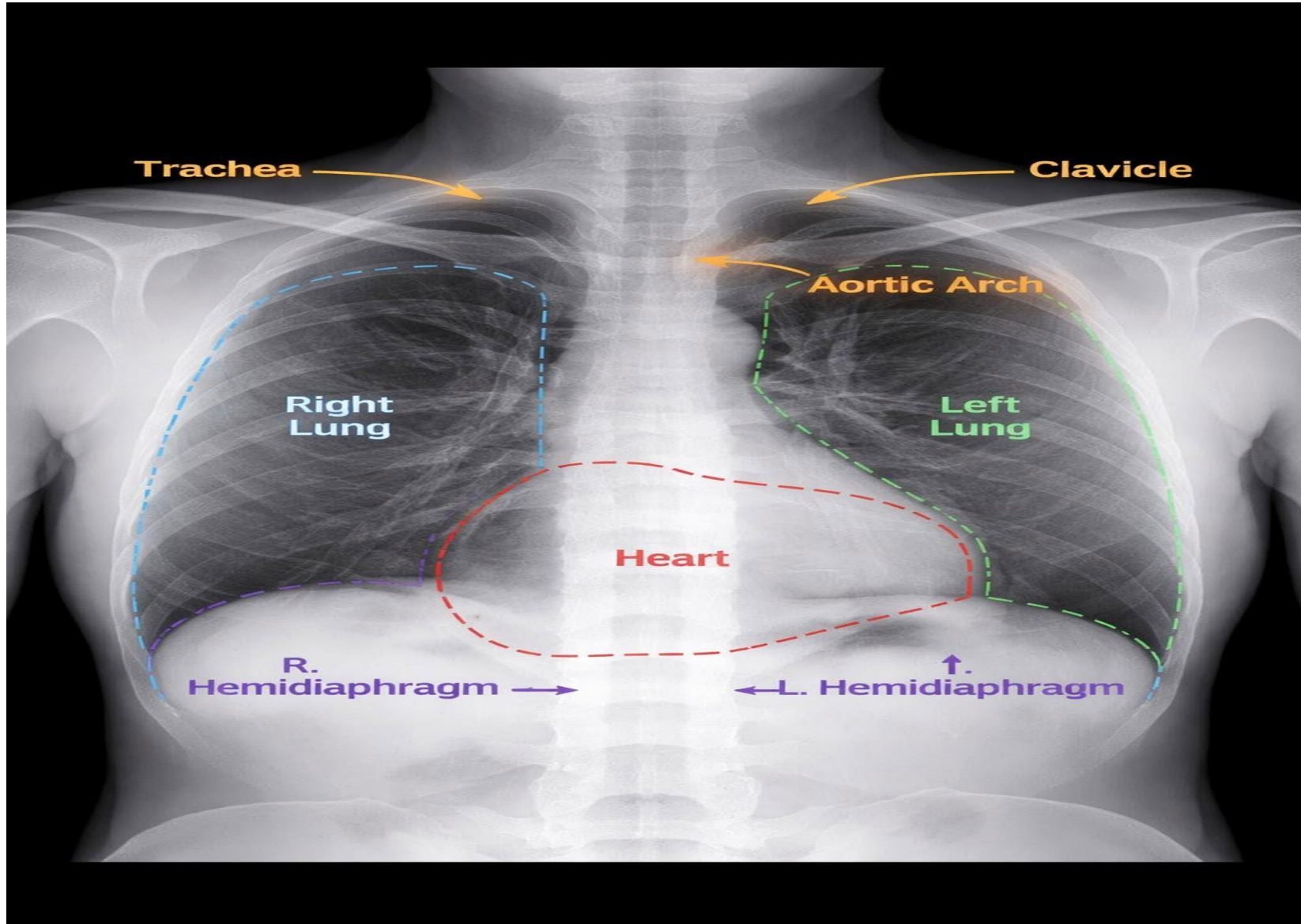
nayalE hayA rD :retneserP

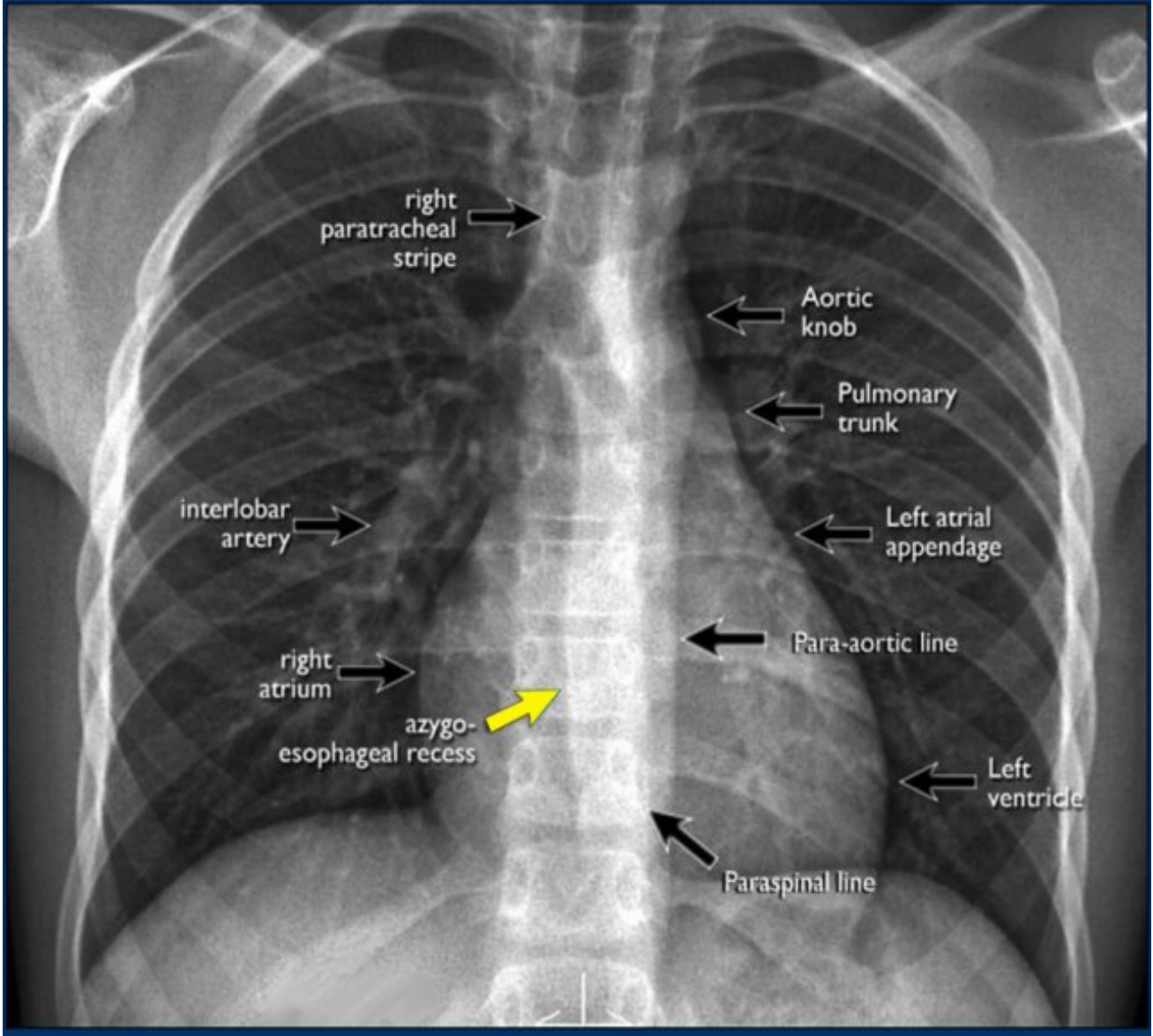
The Systematic Approach (ABCDEFGHI)

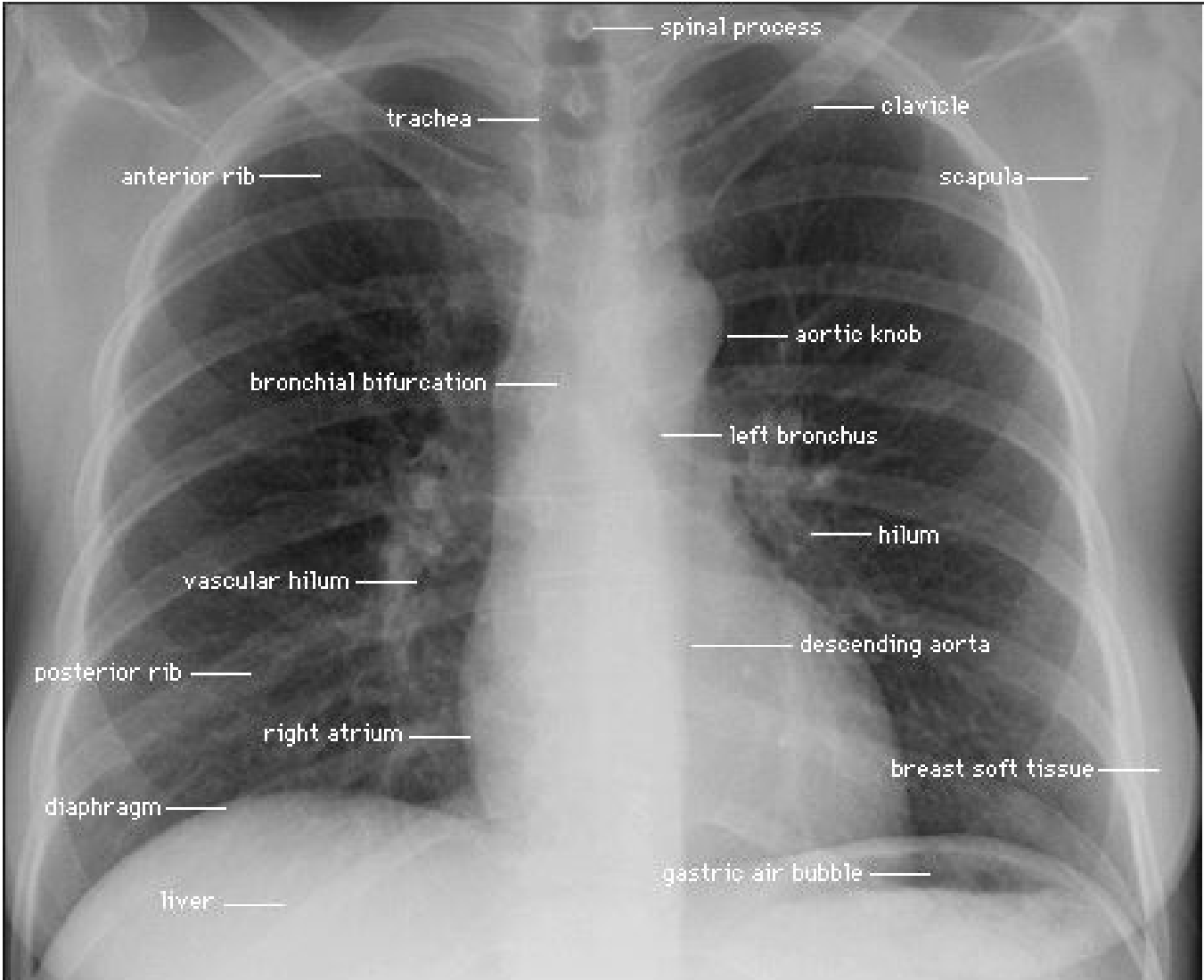
- **Purpose:** To never miss a finding.
- **Points:**
 - **A (Airway):** Tracheal deviation.
 - **B (Breathing):** Lung fields & Pleura.
 - **C (Circulation):** Heart size & Mediastinum.
 - **D (Diaphragm):** Costophrenic angles & air under diaphragm.
 - **E (Everything else):** Bones, soft tissues, and tubes/lines.

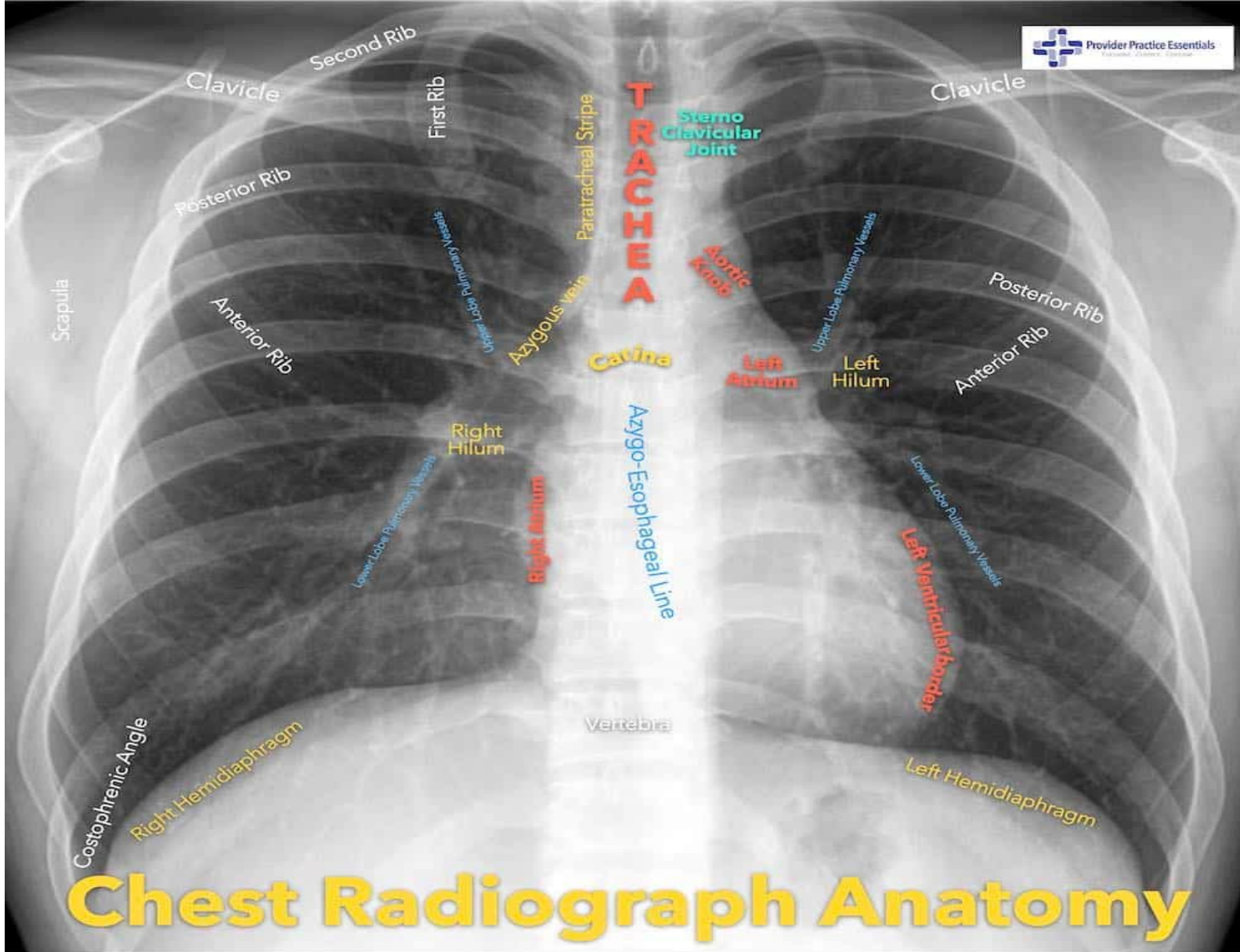


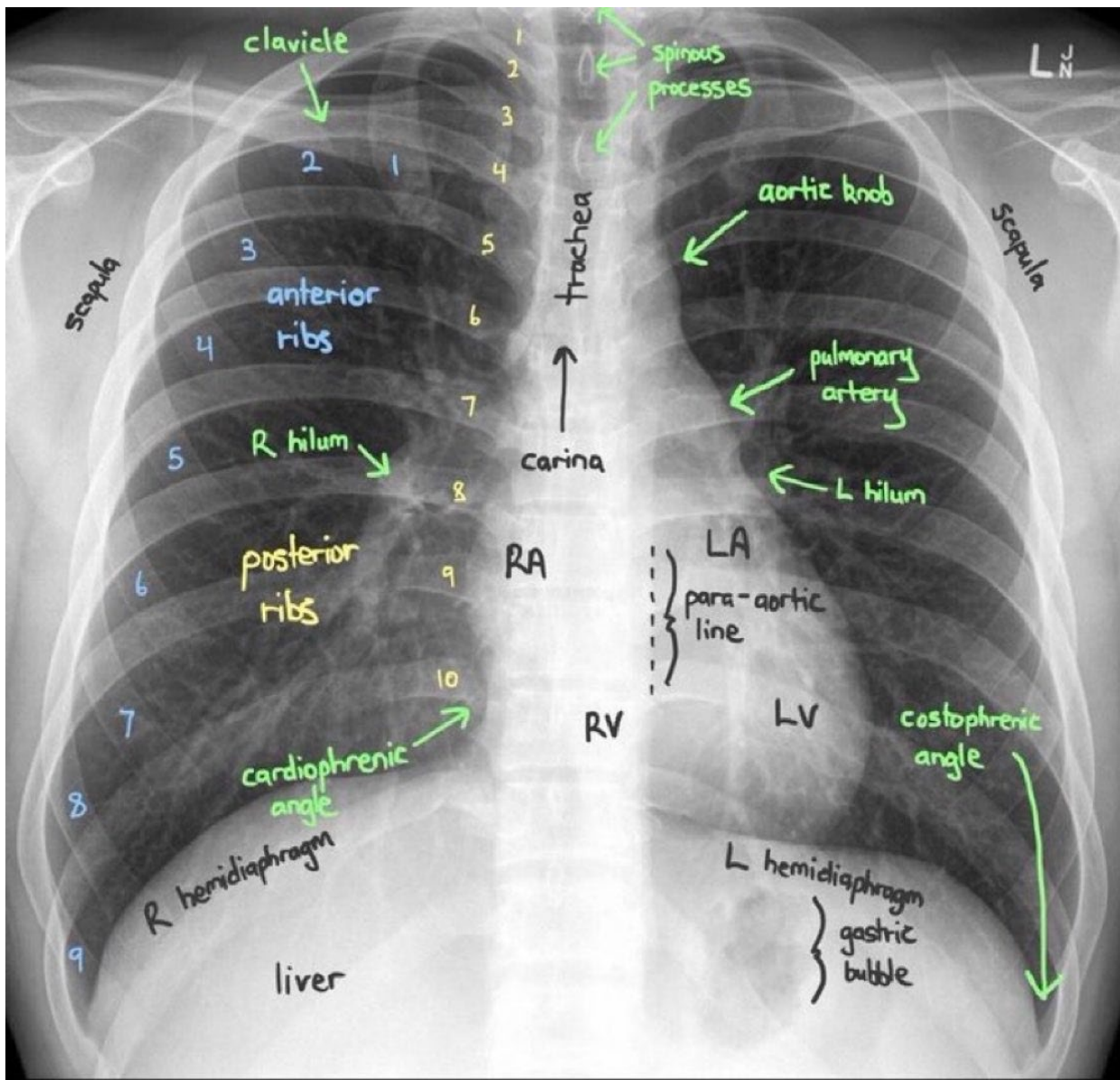


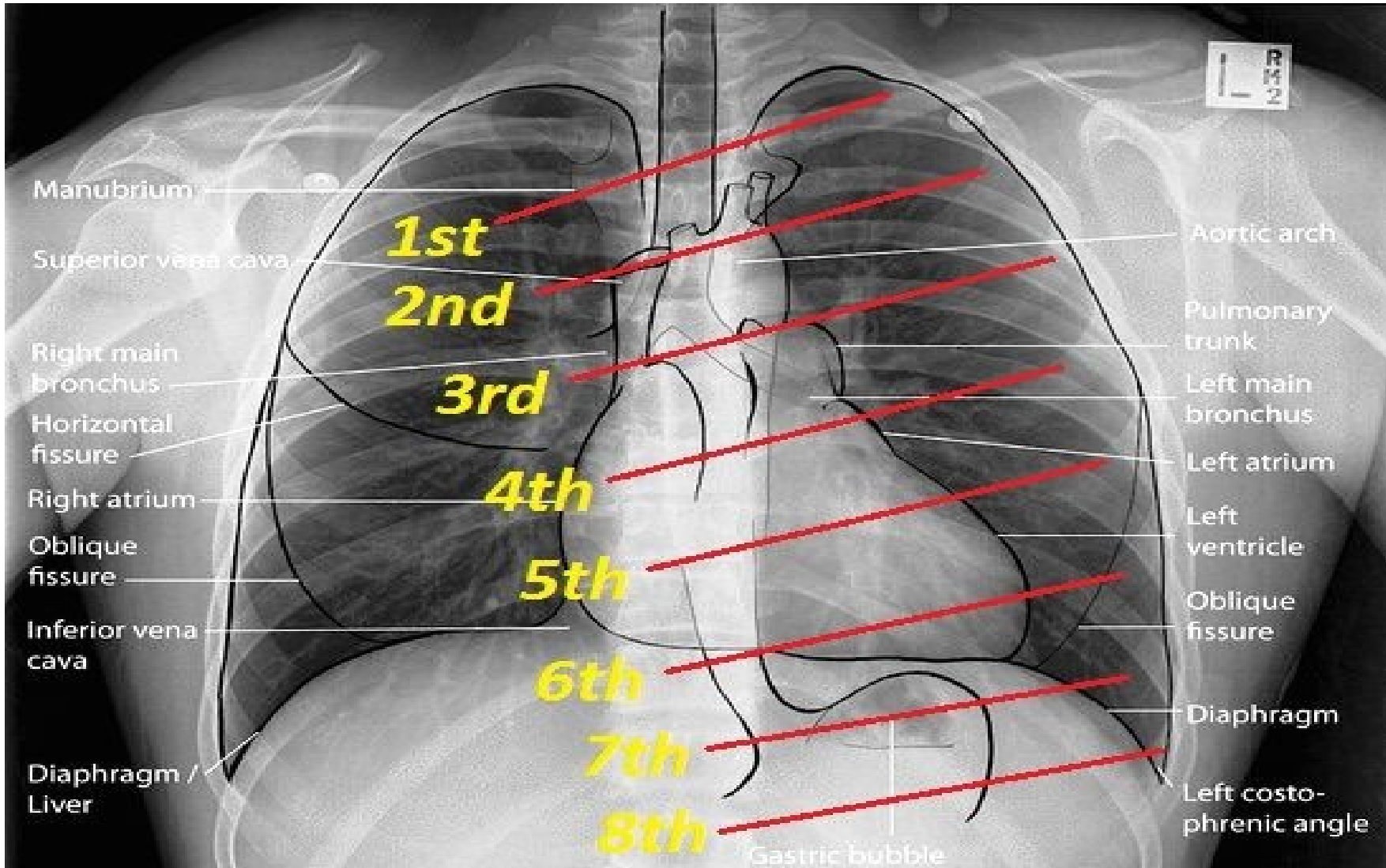










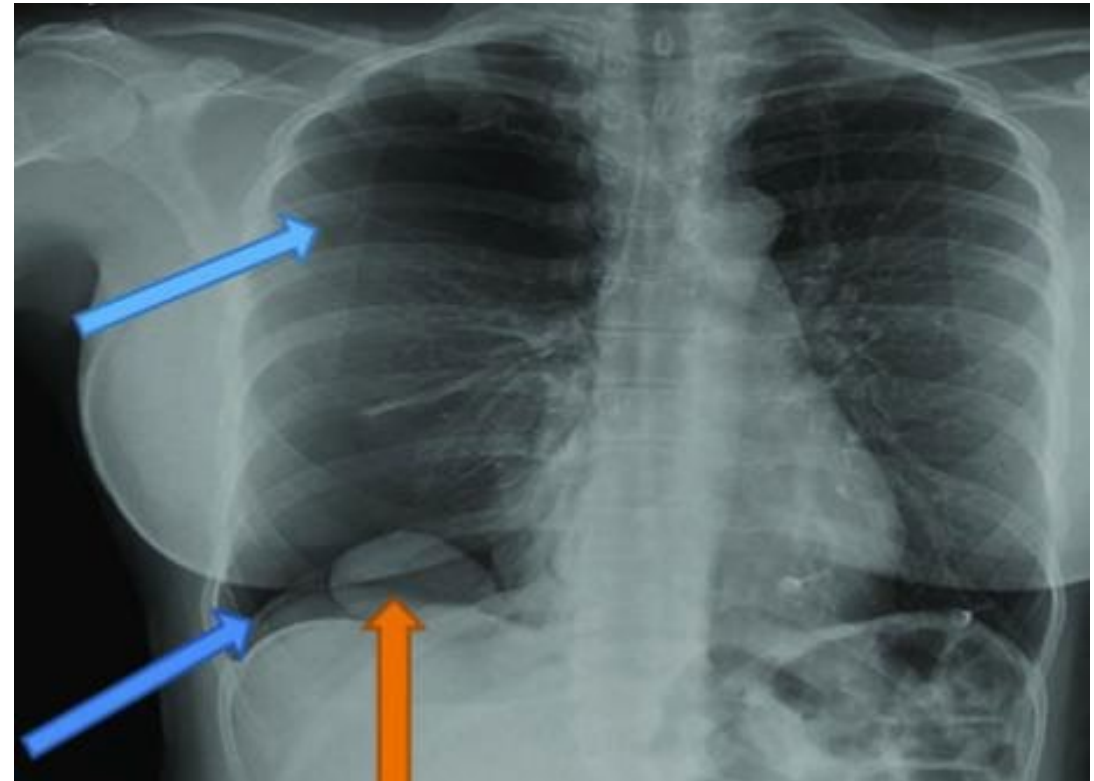


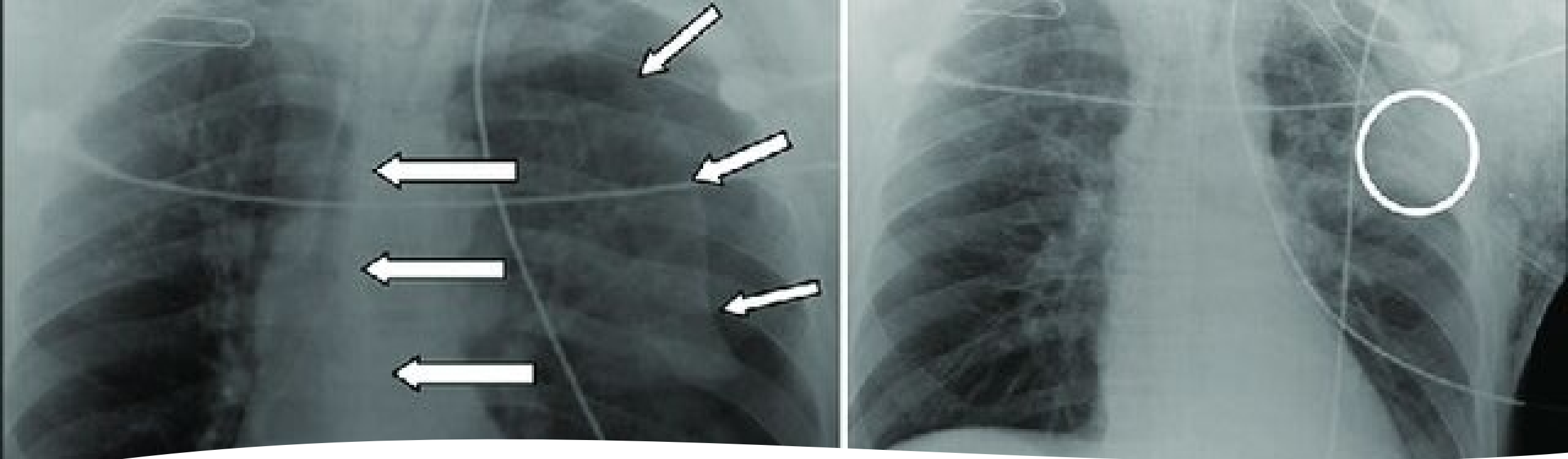
Pneumothorax

- Definition: Presence of air in the pleural space.
- :sepyT
- .(yradnoceS/yramirP) suoenatnopS
- .(gnitartenep ro tnulB) citamuarT
- .(ycnegreme gninetaerht-efiL) noisneT

Radiographic Signs

- enil etihw niHT :eniL laruelP larecsiV .egde gnul eht gnitneserper
- htiw aera "kcalb teJ" :ycneculrepyH .sgnikram gnul on
- enipus ni neeS :ngiS sucluS peeD cinerhpotsoc peed yrev) stneitap .(elgna

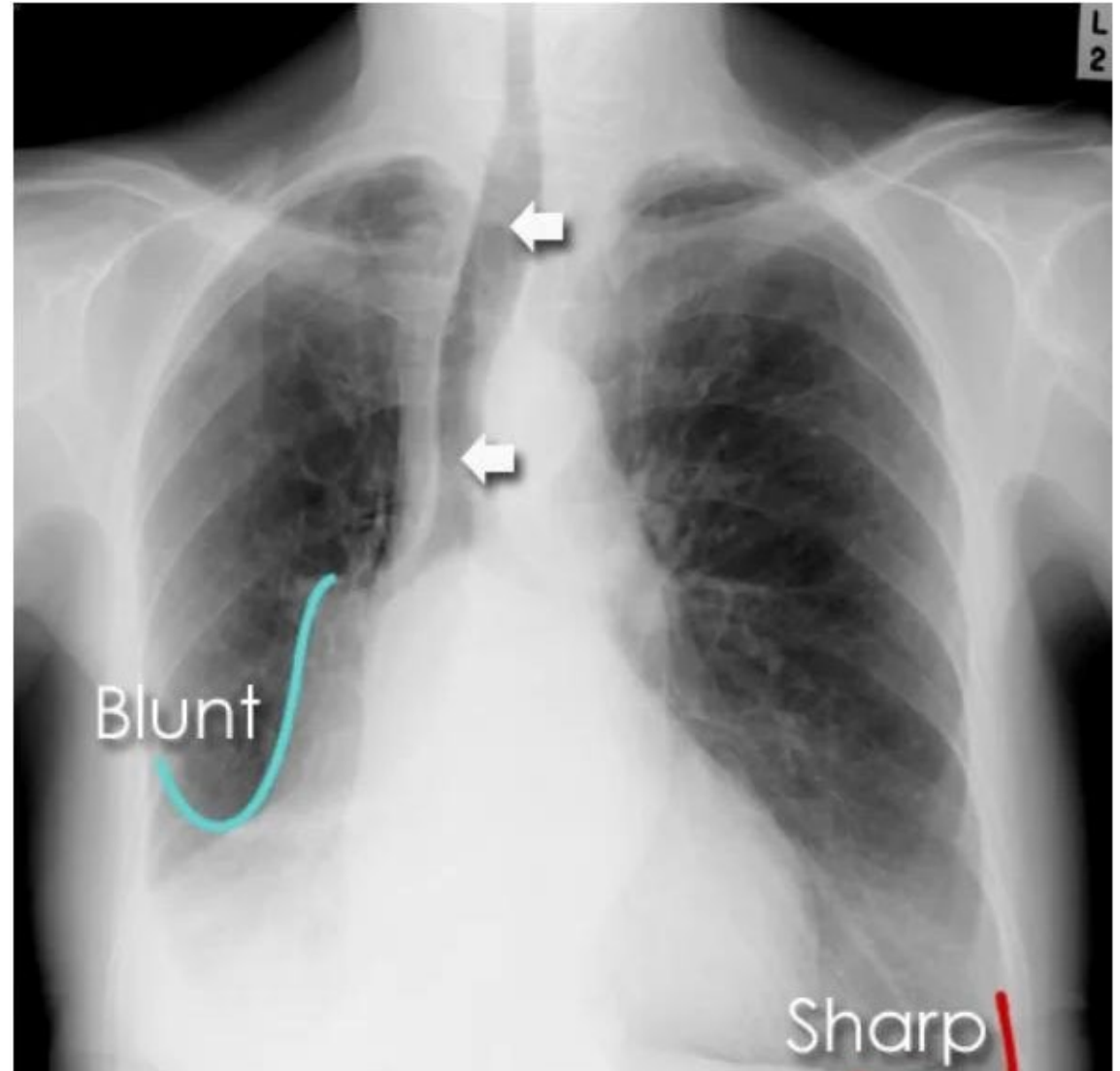




- Tension pneumothorax (short arrows, left) with contralateral mediastinal shift (long arrows, left). The pneumothorax was managed with emergently placed tube thoracostomy

Hemothorax

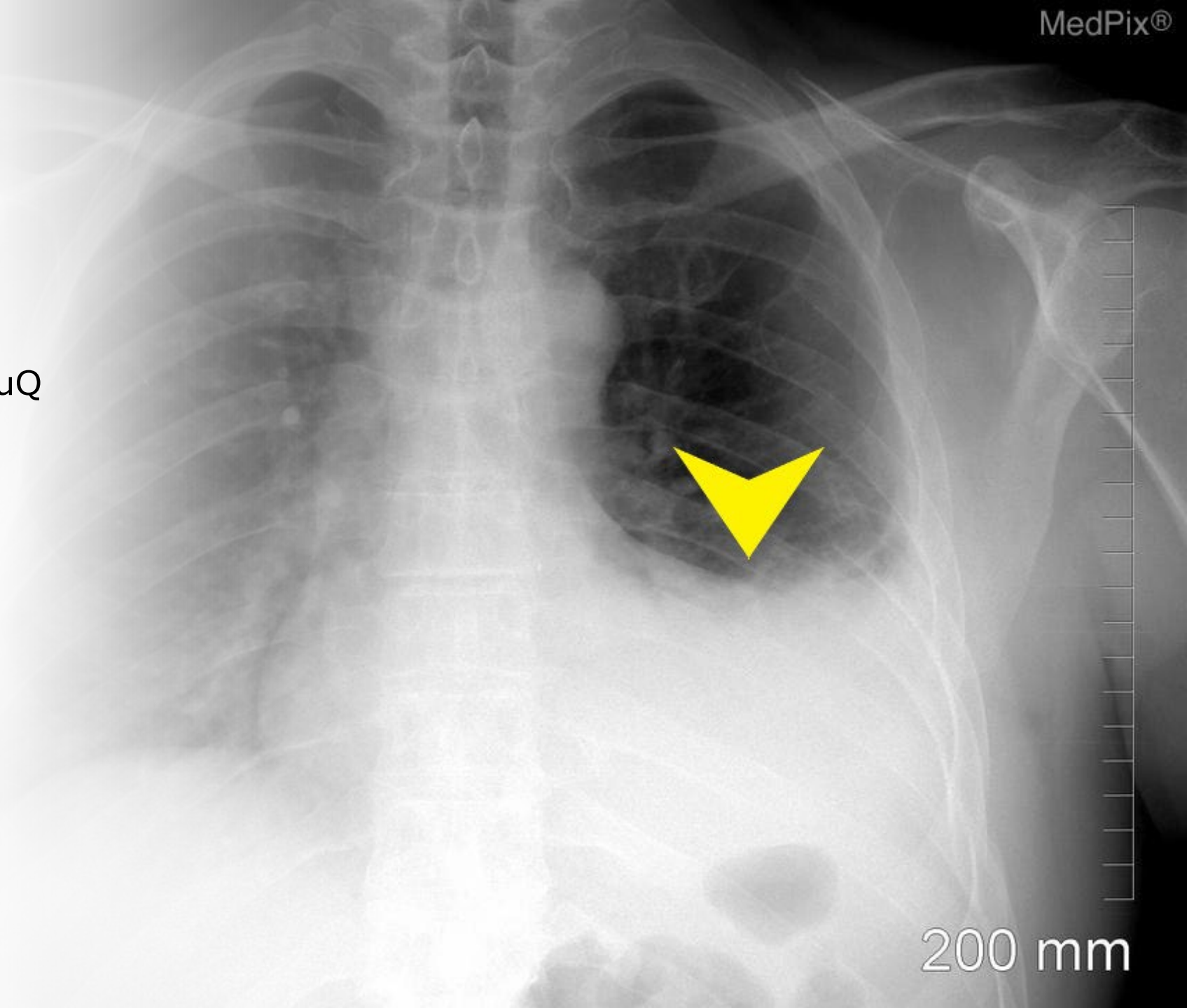
- Definition: Blood in the pleural cavity (Pleural fluid Hct 50% \leq of peripheral Hct).
- :sgnidniF yar-X
- tuo-etihW :yticapO suoenegomH .esab eht ta aera
- evacnoc yldrawpU :ngiS succineM .diufl eht fo redrob
- .elgnA cinerhpotsoc fo gnitnulB



Feature	Pneumothorax	Hemothorax
Density	Radiolucent (Black)	Radiopaque (White)
Lung Markings	Absent in the periphery	Obscured by fluid
Pleural Line	Visible	Not visible (Hidden by fluid)
Percussion	Hyper-resonant	Stony Dull

Practical Case (Quiz)

- elam dlo-raey-25 A :noitseuQ
fo ssentrohs htiw ATR-t SOP
no ssenllud dna htaerb
eht si tahW .noissucrep
?sisongaid



200 mm

Conclusion & Summary

- Always use a systematic approach (ABCDE).
- Pneumothorax = Black (Air).
- Hemothorax = White (Blood).
- Tension Pneumothorax is a **clinical** diagnosis.